

A large, 3D-rendered white text 'WELCOME!' is centered on a white background. The text is surrounded by a dense cloud of colorful confetti in shades of red, blue, yellow, and pink. The letters have a slight shadow, giving them a three-dimensional appearance.

WELCOME!

Who am I?



Lucia Forrova



Data Steward



l.forrova@tue.nl



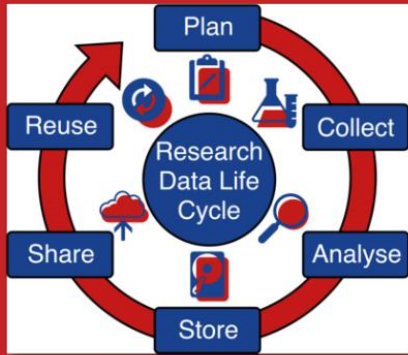
rdmsupport@tue.nl



What to expect from Data Bites?



Learn about RDM



Quick sessions



Informal setting



We keep it simple



Why should you care about Research Data Management?

**Your research is extremely valuable but only if
a proper research data management is maintained**

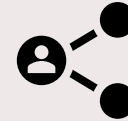
Research Data Management elements



Documentation and
metadata



Safety, storage, and
backup



Data sharing



Project continuity



Ethics and legal
compliance



Project integrity

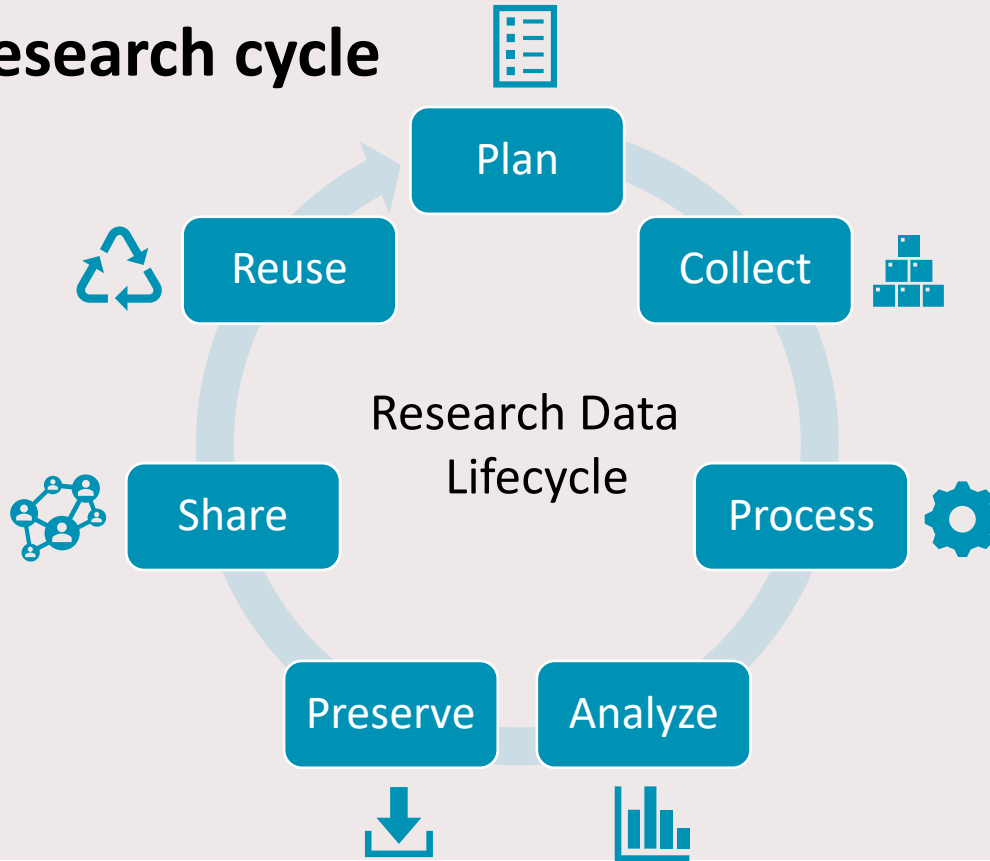


Reusable data



Responsibilities and
resources

RDM in research cycle



Why RDM? – Internal motivators



Reduces risk
of data loss



Recognition



Higher
quality



Collaboration



More
efficient
science

Why RDM? – external motivators



Scientific
Integrity



Ethics & privacy
regulations

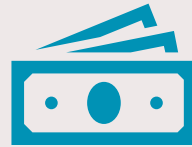


Funder
requirements

Data management plan



Document capturing
your RDM plans for a
project



Required by funders



Not obligatory at TU/e,
but highly
recommended

Your research is your legacy

Research Data Management can help you take care of it

Best practices in RDM

Documentation



METADATA



README FILE

Data Organization



FILE NAMING



FOLDER STRUCTURE

Data Storage



TU/E RECOMMENDED
SOLUTIONS



BACKUPS



VERSIONING

Data Security



ACCESS CONTROL



ENCRYPTION

Data Preservation



LONG TERM STORAGE

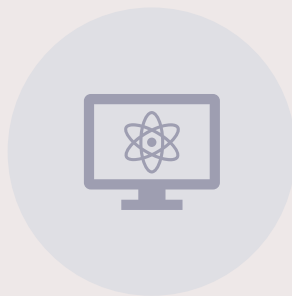


DATA RETENTION

Sharing and collaboration



LICENSING, TERMS
OF USE



PLATFORMS



STORAGE

Compliance



ETHICS



PRIVACY



FUNDER
REQUIREMENTS

Training and awareness



KNOWLEDGE
SHARING



TRAINING SESSIONS

Resources



[Research Data Management TU/e website](#)



[TU/e Storage Finder](#)

**A proper RDM is fundamental to enhance the
efficiency, reliability, and impact
of your research.**

Thank you for your attention 😊

Let's discuss (?)

**Are there any challenges you have
faced in managing research data?**

**What could stimulate or incentivize
you to adopt robust RDM
practices?**

What RDM topics do you feel are important, but you do not have enough knowledge about?

Upcoming Data Bites

29 February
11:00-11:30
Vertigo 6.06

**Working towards Open Science and
FAIR**

28 March
11:00-11:30
Vertigo 2.32

How to: Metadata and Documentation

25 April
11:00-11:30
Vertigo 2.32

Version control in action