

Mobile Velocity Based Bidirectional Call Overflow Scheme in Hierarchical Cellular System

G. M. Mir, Moinuddin, and N. A. Shah

International Science Index, Electronics and Communication Engineering Vol:3, No:10, 2009 waset.org/Publication/13381

Abstract—In the age of global communications, heterogeneous networks are seen to be the best choice of strategy to ensure continuous and uninterruptible services. This will allow mobile terminal to stay in connection even they are migrating into different segment coverage through the handoff process. With the increase of teletraffic demands in mobile cellular system, hierarchical cellular systems have been adopted extensively for more efficient channel utilization and better QoS (Quality of Service). This paper presents a bidirectional call overflow scheme between two layers of microcells and macrocells, where handoffs are decided by the velocity of mobile making the call. To ensure that handoff calls are given higher priorities, it is assumed that guard channels are assigned in both macrocells and microcells. A hysteresis value introduced in mobile velocity is used to allow mobile roam in the same cell if its velocity changes back within the set threshold values. By doing this the number of handoffs is reduced thereby reducing the processing overhead and enhancing the quality of service to the end user.

Keywords—Hierarchical cellular systems, hysteresis, overflow, threshold.

I. INTRODUCTION

THE continuation of an active call is one of the most important qualities of measurements in cellular systems. Handoff process enables a cellular system to provide such a facility by transferring an active call from one cell to another. The current trend of exponential growth in the use of personal communication services is causing the industry to examine ways to use the available bandwidth more efficiently.

In wireless cellular network, a fixed number of channels are assigned to a given cell. If a channel is used by a call, no other call can use the channel again in the same cell at the same time. With the decrease in size of the cells, the system capacity increases because of the more efficient reuse of frequencies in a given area. However, there is also an increase

in the number of cell boundaries that a mobile unit crosses. These boundary crossings stimulate handoff calls and location tracking operations, which are very expensive in terms of time delay and communication bandwidth, hence limiting the call handling capacity of a cellular system. One way of controlling the increase in traffic, while preserving the frequency reuse advantage of smaller cells, is to adopt a hierarchical architecture.

When a call originates from a mobile it can move around with different speeds. Based on different mobile velocities and predetermined velocity threshold, all the calls are divided into two groups: fast calls and slow calls (including new calls and handoff calls). In general, the fast calls are served by the macrocells, while the slow calls are served by the microcells [1], [2]. In early schemes introduced in [3], [4], for each individual call, the serving layer does not change at all, e.g.; fast (slow) calls are always served by the macrolayer (microlayer). Both the schemes did not allow overflow from one tier to another. It is obvious that the procedure of allocating calls in different layers is very important. Imperfect calls assignment will result in some disadvantages, i.e., if the macrocell has no free channels, even though its overlaid microcell has many free channels, the fast calls will terminate. Two strategies for traffic management have been desired in [5]. Strategy 1, divided mobile stations into two groups based on their speed and then served by different layers to minimize the handoff rate. In strategy 2, the mobile stations may enter either layer, regardless of their speed. They also discussed how to determine the threshold speed to keep the traffic balanced between the two layers. However, the handoff rate is not the only criterion to judge the system performance, although more handoffs can cause more overhead.

Fuzzy logic control has been successful in various applications; fuzzy algorithms have also been employed to improve the cellular system performance [6], [7]. The approach used by Shun and Sung aims mainly at layer selection in hierarchical cellular systems and the fuzzy rules are constructed in order to reduce the handoff rate and the blocking probability [7], however, another important element, handoff failure probability, is ignored. Shun et al [8] presented an improved bidirectional call overflow scheme. The general performance of this scheme is good except for excessive handoffs between two tiers. Mir et al [9] presented efficient handoffs, between microcells using mobile velocity

G. M. Mir is Assistant Professor (Senior Scale) in the Division of Agricultural Engineering, S. K. University of Agricultural Sciences and Technology-Kashmir, Srinagar-191 121, India (Contact:91-9419076882; fax: 91-2461326; e-mail: mir_ae@hotmail.com).

Moinuddin was Dean Faculty of Engineering, Jamia Millia Islamia, New Delhi, India. He is now Director in Dr. B. R. Ambedkar National Institute of Technology Jalandhar-144 011, India (e-mail:prof_moin@yahoo.com)

N. A. Shah was Dean Academic Colleges University of Kashmir, He is now Dean Faculty of Sciences University of Kashmir Srinagar-190 006, India (e-mail:nashah2007@rediffmail.com)

as an effective parameter. [10] presents decentralized handoffs between microcells due to corner effects. The major contribution of our paper is inclusion of hysteresis value in the speed of mobile station, so that a mobile station retains control of its own tier (micro or macro) if its velocity is within the hysteresis value, this avoids excessive handoffs, thus reduces overhead processing.

II. VELOCITY BASED BIDIRECTIONAL CALL OVERFLOW SCHEME

One can not presume mobiles with fixed velocities. A mobile station can change speed anytime from low to high and vice versa. Thus relying to one layer can hamper the performance of a mobile network. Also if a mobile station changes speed above and below the threshold level, the handoff triggering between two layers also increases thereby again increasing the processing overhead.

If the velocity of the mobile originating the call is bigger than the threshold, it is a fast call and will be served by macrocells; otherwise it is a slow call and will be served by microcells during its life time.

In unidirectional call-overflow scheme calls can overflow in one direction only from microcell to macrocell or vice versa [11], [12]. When a slow call originates and if all channels in the current microcell are engaged then this call will overflow into the corresponding macrocell. If all the channels of the target macrocell and microcell which the mobile will move into are used, the slow handoff calls will be terminated. The bidirectional call overflow scheme increases the channel utilization and reduces blocking probability and failure probability of handoff calls.

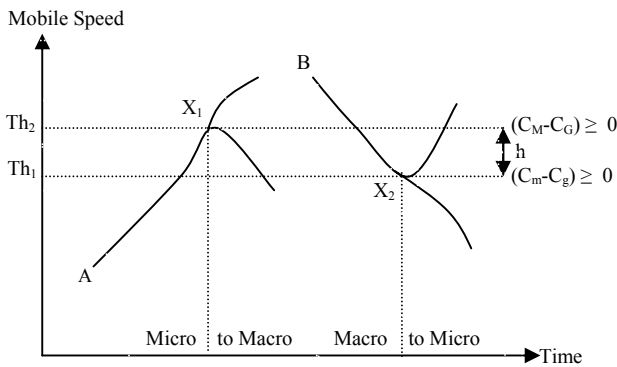


Fig. 1 Movement of MS from microcell to macrocell and vice versa with two thresholds in speed

Figure 1 depicts the movement of mobile station from microcell to macrocell and vice versa with two thresholds in speed of mobile station. Supposing a call is initiated at 'A' and mobile station is accelerating. When the mobile station reaches threshold level Th_1 call is not handed off to macrocell layer till another threshold value Th_2 is reached, however the handoff within the same tier (microcell to microcell) can take place. The two thresholds will enable mobile station to retain the call in the same tier if speed of mobile station decreases. Similarly when a call is initiated at 'B' and mobile station is

decelerating, the call is retained in macrocell tier till threshold level Th_1 is reached. Table I shows the movement of mobile station from one cell to another within same or different tiers with different values of thresholds.

TABLE I
 MOBILE MOVEMENT WITH THRESHOLD VALUES

For call starting at A	
Threshold status	Action
$(Th_2 - Th_1) < h$	Microcell to microcell
$(Th_2 - Th_1) \geq h$	Microcell to macrocell $(C_M - C_G) \geq 0$
For call starting at B	
Threshold status	Action
$(Th_1 - Th_2) < h$	Macrocell to macrocell
$(Th_1 - Th_2) \geq h$	Macrocell to microcell $(C_m - C_g) \geq 0$

Where C_M, C_m is total channels in macrocells and microcells respectively and C_G, C_g is the guard channels in macrocells and microcells respectively. The bidirectional call overflow scheme is shown in Figure 2. As long as there is free channel either in microcell or in macrocell, a new or handoff call will not be blocked. Table II shows different membership values for various values of hysteresis, threshold and received signal strength. These values are obtained by simulation method with the help of Mamdani inference system

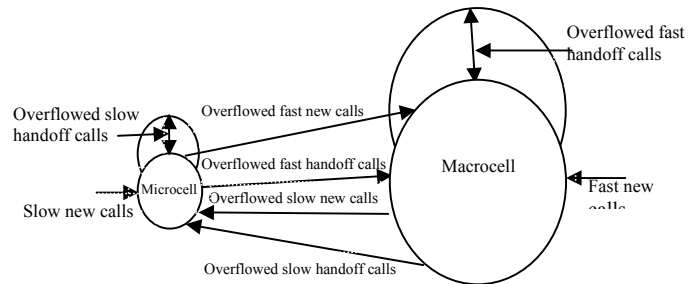


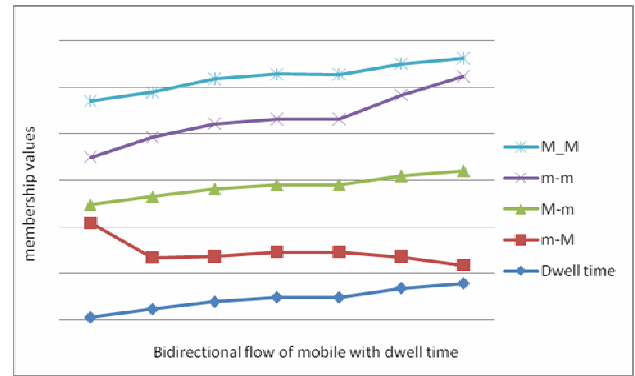
Fig. 2 Bidirectional call overflow scheme

TABLE II
 MOVEMENT OF MOBILE WITH DIFFERENT VALUES OF RECEIVED SIGNAL STRENGTH, HYSTERESIS AND THRESHOLD

RSS=2, Dwell time	Hysteresis=1.02,		Threshold=2	
	m-M	M-m	m-m	M-M
0.34	10.1	1.94	5	6
1.22	5.52	5.35	5.35	5
2	4.86	6	6	5
2.49	4.86	6.13	6.13	5
2.98	4.86	7	7	5
3.4	3.36	8.64	8.64	3.36
3.89	1.96	10.1	10.1	1.94

RSS=2.98, Hysteresis=3.07, Threshold=2

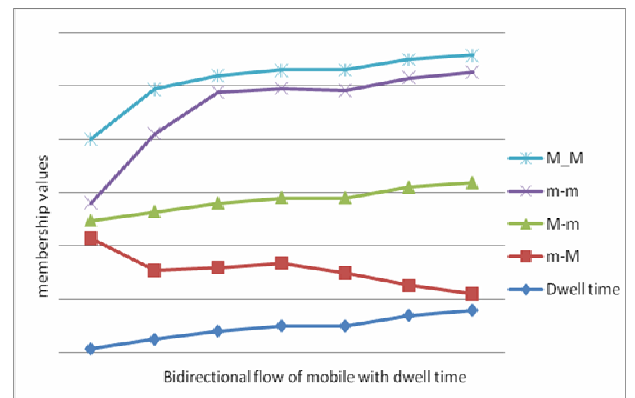
<u>Dwell time</u>	<u>m-M</u>	<u>M-m</u>	<u>m-m</u>	<u>M-M</u>
0.34	10.1	1.94	5.09	6
1.22	5.52	6.51	6.37	4.8
2	4.86	7.2	7	4.8
2.49	4.86	7.2	7	4.8
2.48	4.86	7.2	7	4.8
3.48	3.36	8.64	8.64	3.36
3.99	1.94	10.1	10.1	1.94



(b)

RSS=3.95, Hysteresis=2, Threshold=2

<u>Dwell time</u>	<u>m-M</u>	<u>M-m</u>	<u>m-m</u>	<u>M-M</u>
0.34	10.4	1.63	1.63	6
1.22	6.52	5.46	7.31	4.17
2	6	6	10.4	1.56
2.49	5.91	6.09	10.3	1.68
2.48	5	7	10.1	1.94
3.48	2.83	9.17	10.3	1.7
3.95	1.56	10.4	10.4	1.56



(c)

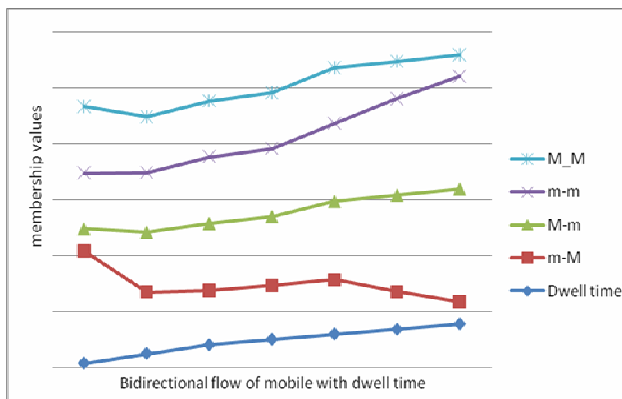
Fig. 3 Movement of mobile station between microcells(m) and macrocells(M)

III. CONCLUSION

The high dimensional expansion of cellular mobile communication requires high capacity cells to cater the new traffic demands. The two tier system with conditional controlled bidirectional movement facility provides the resources for combating with high traffic demands. This work can be extended for conditional traffic control via satellite to reach desired terminal. In the multilayer system, our scheme is more flexible to deal with high teletraffic at peak hours in different layers and getting better system performance.

REFERENCES

- [1] T.S. Rappaport, Wireless Communications Principles and practice. Prentice Hall, 1996.
- [2] V.R. Kolavennu and S.S. Rappaport, "Traffic Performance Characterization of a Personal Radio Communication System," IEE Proc. Comm., vol. 133F, pp. 550-561, Oct. 1986.
- [3] C.L. I, L.J. Greenstein, and R.D. Gitlin, "A Microcell/Macrocell Cellular Architecture for Low and High-Mobility Wireless User," IEEE J. Selected Areas Comm., vol. 11, pp. 885-891, Aug. 1993.
- [4] M. Murata and E. Nakano, "Enhancing the Performance of Mobile Communications System," Proc. IEEE Int'l Conf. Universal Personal Comm. (ICUPC '93), pp. 732-736, 1993.
- [5] W. Huang and V.K. Bhargava, "Effects of User Mobility on Handoff Performance in a Hierarchical Cellular System," Proc. Canadian Conf. Electrical and Computer Eng. (CCECE '95), pp. 551-554, 1993.
- [6] K.R. Lo, C.J. Chang, C. Chang, and C.B. Shung, "A QoS Guaranteed Fuzzy Channel Allocation Controller for Hierarchical Cellular Systems," IEEE Trans. Vehicular Technology, vol. 49, pp. 1588-1597, Sept. 2000.



(a)

- [7] K. Shum and C.W. Sung, "Fuzzy Layer Selection Method in Hierarchical Cellular Systems," IEEE Trans. Vehicular Technology, vol. 48, pp. 1840-1849, Nov. 1999.
- [8] Wenhao Shan, Pingzhi Fan, and Yi Pan, "Performance Evaluation of a Hierarchical Cellular System with Mobile Velocity-Based Bidirectional Call-Overflow Scheme IEEE Trans. on parallel and distributed systems, vol. 14, No. 1, pp 72-83, Jan 2003.
- [9] G. M. Mir, N. A. Shah, "Realization of QoS in Handoffs by hysteresis using Fuzzy Logic" Journal of Mass Communicator, vol 2, issue 2, pp 13-20, June 2008.
- [10] G. M. Mir, N. A. Shah, Moinuddin, "Decentralized Handoff for Microcellular Mobile Communication System using Fuzzy Logic" World Academy of Science, Engineering and Technology, vol 50, pp 866-870, Feb 2009.
- [11] S.S. Rappaport and L.R. Hu, "Microcellular Communication Systems with Reneging and Dropping for Waiting New and Handoff Calls," Proc. IEEE, vol. 82, pp. 1383-1397, Sept. 1994.
- [12] S.S. Rappaport and L.R. Hu, "Personal Communication Systems Using Multiple Hierarchical Cellular Overlays," IEEE J. Selected Areas Comm., vol. 13, pp. 406-415, May 1995.

G. M. Mir received the Post Graduate degree from Department of Electronics and Computer Sciences University of Kashmir in 1992. He has submitted his thesis on the topic captioned as "Realization of QoS on Wireless Mobile Networks Using Fuzzy Logic" He has worked as Lecturer in the Department of Electronics University of Kashmir from 1993 to 2001. He is now working as Assistant Professor (Senior Scale) in the Division of Agricultural Engineering, S. K. University of Agricultural Sciences and Technology–Kashmir, Srinagar since 2001. His research interests include Cellular Mobile Communication, Fuzzy Modeling.

Moinuddin was Head Department of Electrical Engineering and Dean Faculty of Engineering Jamia Millia Islamia New Delhi, He is now Director in Dr. B. R. Ambedkar National Institute of Technology Jalandhar. He has large number of publications in National and International Journals. His research interests include Routing in Mobile Adhoc Networks, Fuzzy Logic, and Artificial Intelligence.

N. A. Shah was Professor and Head in the Department of Electronics University of Kashmir. He was Dean Academic Colleges University of Kashmir. He is now Dean Faculty of Sciences University of Kashmir. There are large numbers of publications in National and International Journals to his credit. His research interests include Circuit Modeling, Fuzzy Design Techniques, and Active Filters.