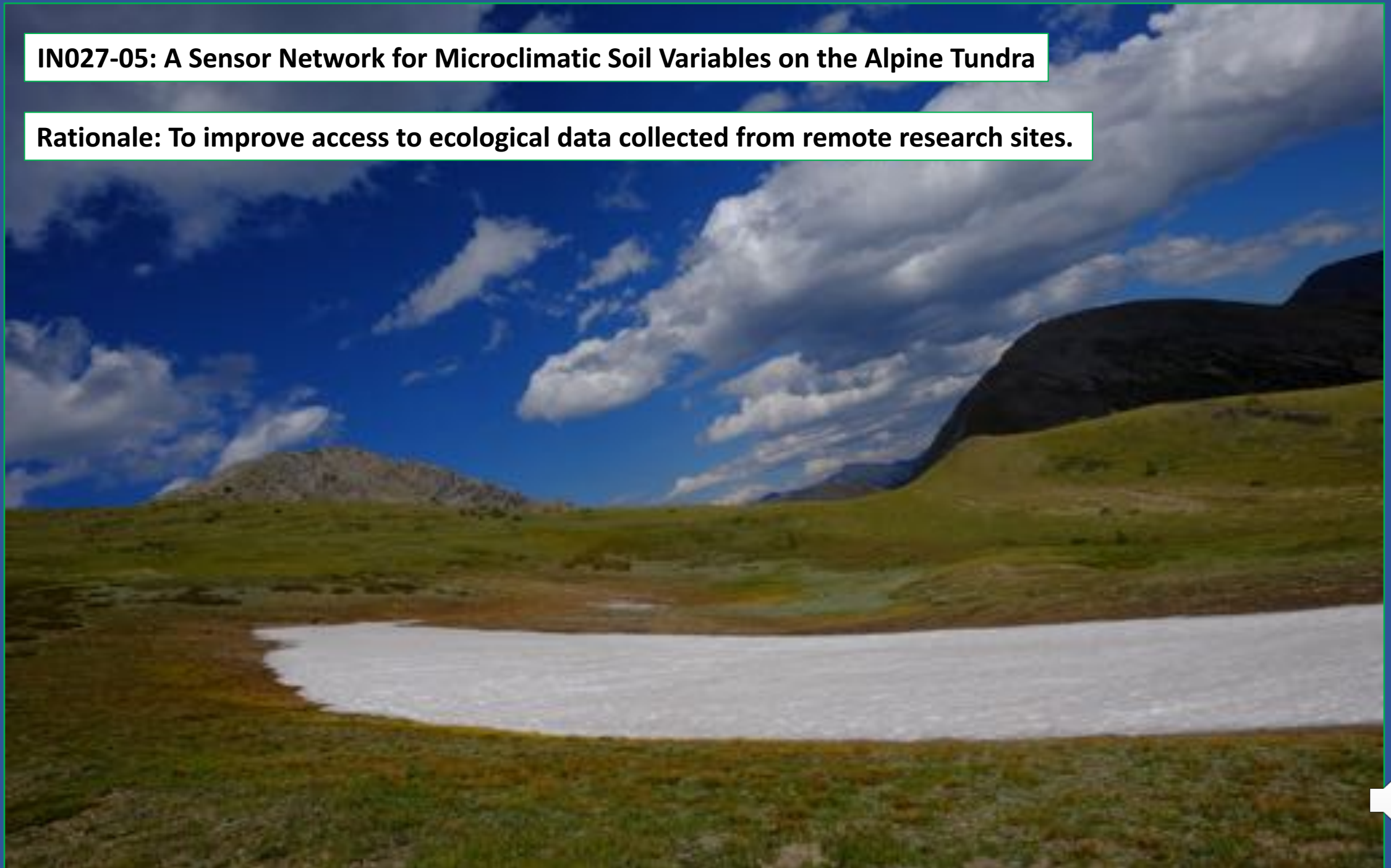
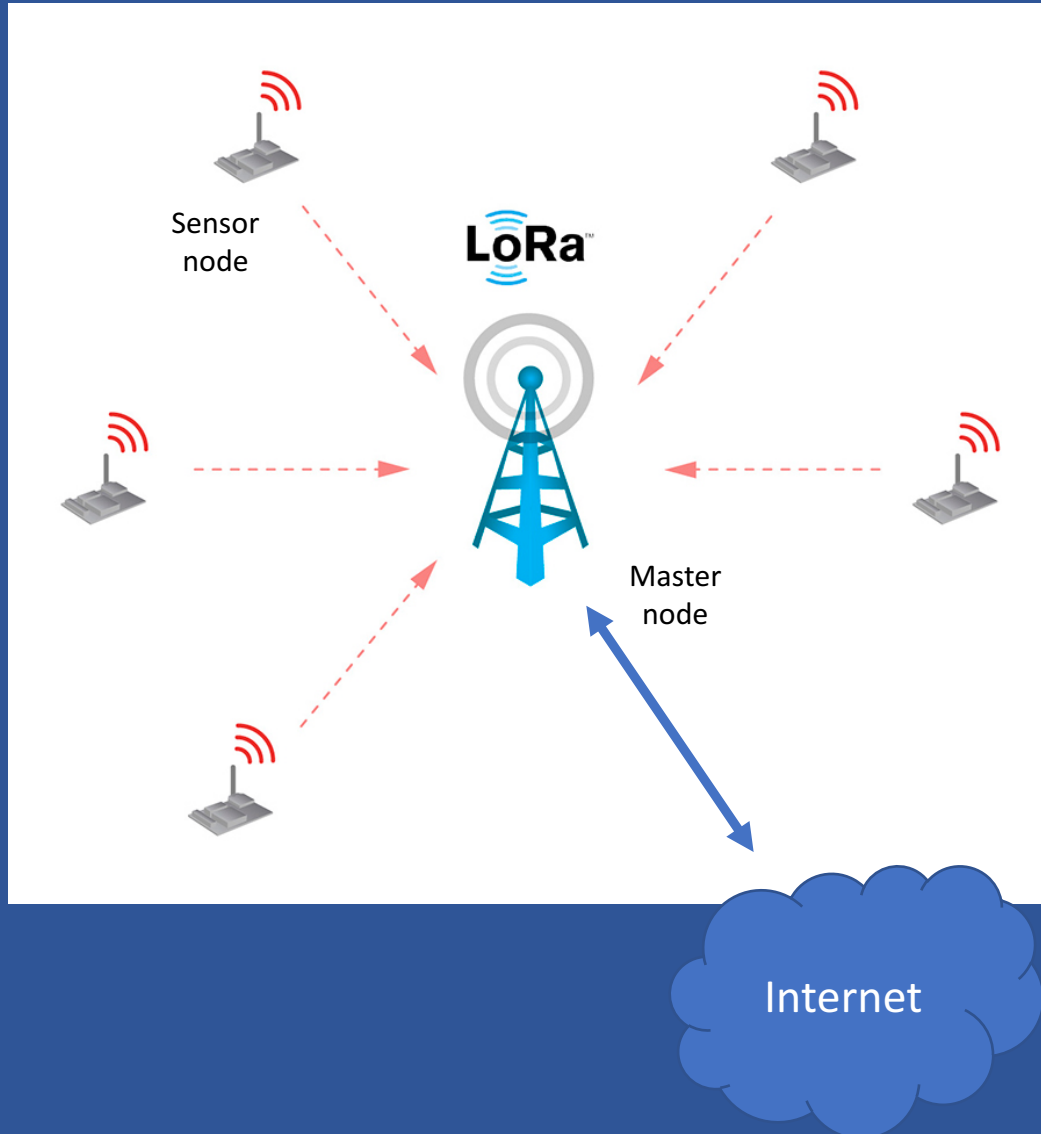



IN027-05: A Sensor Network for Microclimatic Soil Variables on the Alpine Tundra

Rationale: To improve access to ecological data collected from remote research sites.



LoRa with a Satellite uplink can provide near-real-time access to remote data.





Low cost open source hardware can enable new kinds of research,
and increase the scale of ecological research in remote places.

**James Gallagher, jgallagher@opendap.org; Kevin Negus, knegus@mtech.edu;
Jamison Ehlers, jehlers@mtech.edu; Martha Apple, mapple@mtech.edu**