

A novel prognostic nomogram predicts premature failure of kidney allografts with IgA nephropathy recurrence

Kamila Bednarova ^{1,2}, Geir MjØen³, Petra Hrubá⁴, Istvan Modos⁵, Ludek Voska⁶, Marek Kollar⁶ and Ondrej Viklicky ^{1,4}

¹Department of Nephrology, Transplant Centre, Institute for Clinical and Experimental Medicine, Prague, Czech Republic

²1st Medical Faculty, Charles University, Prague, Czech Republic

³Department of Nephrology, Oslo University Hospital, Oslo, Norway

⁴Transplant Laboratory, Institute for Clinical and Experimental Medicine, Prague, Czech Republic

⁵Department of Informatics, Institute for Clinical and Experimental Medicine, Prague, Czech Republic

⁶Clinical and Transplant Pathology Centre, Institute for Clinical and Experimental Medicine, Prague, Czech Republic

Correspondence to: Ondrej Viklicky; E-mail: ondrej.viklicky@ikem.cz

ABSTRACT

Background. Recurrence of immunoglobulin A nephropathy (IgAN) limits graft survival in kidney transplantation. However, predictors of a worse outcome are poorly understood.

Methods. Among 442 kidney transplant recipients (KTRs) with IgAN, 83 (18.8%) KTRs exhibited biopsy-proven IgAN recurrence between 1994 and 2020 and were enrolled in the derivation cohort. A multivariable Cox model predicting allograft loss based on clinical data at the biopsy and a web-based nomogram were developed. The nomogram was externally validated using an independent cohort ($n = 67$).

Results. Patient age <43 years [hazard ratio [HR] 2.20 [95% confidence interval (CI) 1.41–3.43], $P < .001$], female gender [HR 1.72 (95% CI 1.07–2.76), $P = .026$] and retransplantation status [HR 1.98 (95% CI 1.13–3.36), $P = .016$] were identified as independent risk factors for IgAN recurrence. Patient age <43 years [HR 2.77 (95% CI 1.17–6.56), $P = .02$], proteinuria >1 g/24 hours [HR 3.12 (95% CI 1.40–6.91), $P = .005$] and C4d positivity [HR 2.93 (95% CI 1.26–6.83), $P = .013$] were found to be associated with graft loss in patients with IgAN recurrence. A nomogram predicting graft loss was constructed based on clinical and histological variables, with a C statistic of 0.736 for the derivation cohort and 0.807 for the external validation cohort.

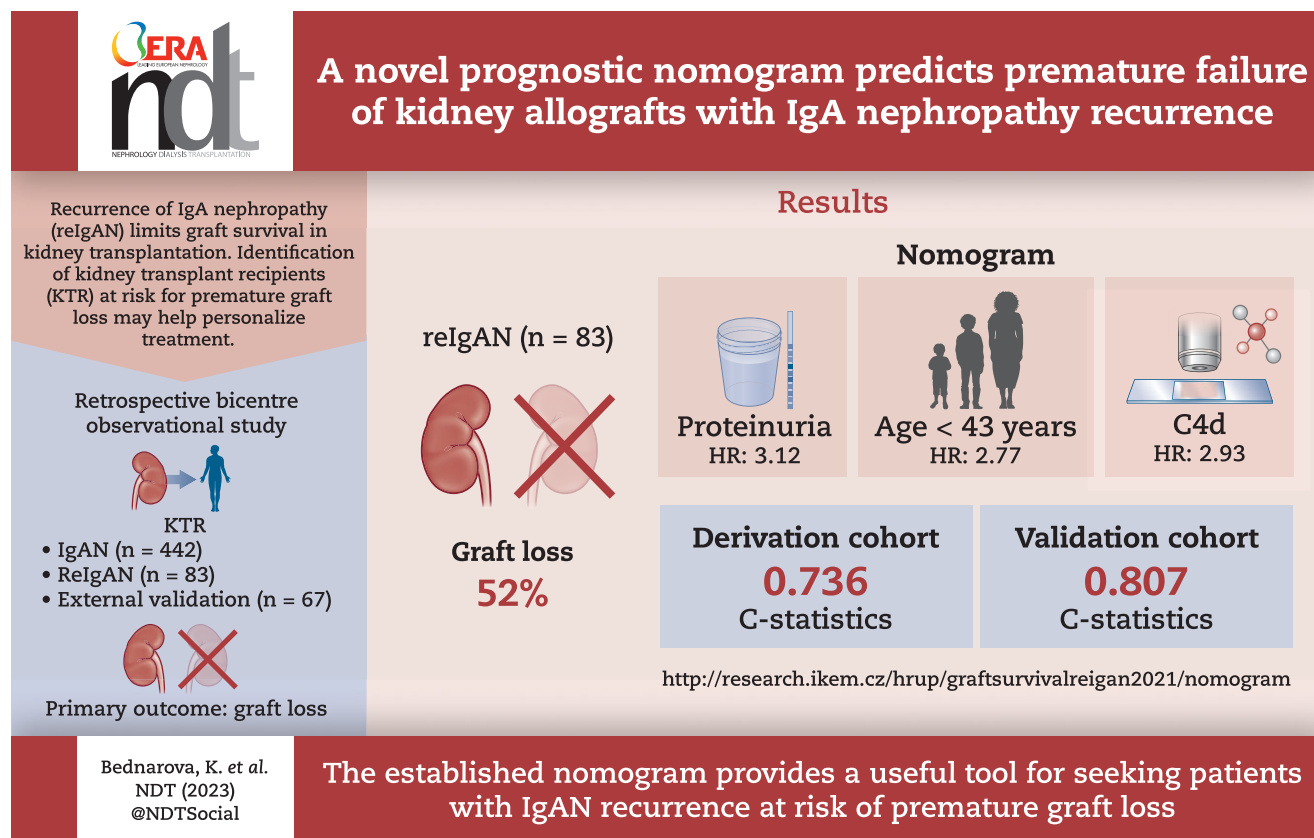
Conclusions. The established nomogram identified patients with recurrent IgAN at risk for premature graft loss with good predictive performance.

Keywords: glomerulonephritis, IgA nephropathy, kidney transplantation, nomogram, recurrence

Received: November 7, 2022; Editorial decision: April 26, 2023

© The Author(s) 2023. Published by Oxford University Press on behalf of the ERA. This is an Open Access article distributed under the terms of the Creative Commons Attribution License (<https://creativecommons.org/licenses/by/4.0/>), which permits unrestricted reuse, distribution, and reproduction in any medium, provided the original work is properly cited.

GRAPHICAL ABSTRACT



KEY LEARNING POINTS

What was known:

Recurrence of immunoglobulin A nephropathy (IgAN) is associated with an increased risk of allograft loss, but predictors of poor outcomes are poorly understood.

This study adds:

A prognostic web-based nomogram based on clinical variables at biopsy (patient age, proteinuria, C4d staining, antihypertensive treatment, estimated glomerular filtration rate and time to recurrence) accurately predicts premature allograft loss.

Potential impact:

Future innovative interventions may help to slow down the progression of recurrent IgAN among identified patients at risk.

INTRODUCTION

The recurrence of immunoglobulin A nephropathy (IgAN) is a common complication in kidney transplantation, significantly affecting the long-term graft outcomes to a similar extent as chronic antibody-mediated rejection [1–4]. The reported incidence varies between 9 and 53% according to different studies, with higher rates in centres performing protocol biopsies [1, 5, 6]. Despite an excellent outcome early after transplantation, almost 50% of recurrent patients experience premature allograft loss [1]. Identifying high-risk patients has been challenging, as the risk of progression to allograft failure is heterogeneous.

Many clinical factors determine the risk of progression of the original disease, including hypertension, young age, proteinuria, the Oxford MEST-C score, low estimated glomerular filtration rate (eGFR), presence of C4d and crescents in kidney biopsy [7–18]. Similarly, several studies have shown associations of IgAN recurrence with young age at transplant, rapid progression of the native

disease, retransplantation, pre-emptive transplants, living donors and early steroid withdrawal [1, 2, 4–6, 19–23]. However, most of the performed studies have focused mainly on the risk factors for IgAN recurrence. The identification of risks associated with premature graft loss in a case of recurrent disease is an unmet medical need in kidney transplantation, and prediction models are not available.

In this study we aimed to identify risk factors associated with biopsy-proven IgAN recurrence and subsequent graft loss in the well-identified patient cohort and construct a prognostic nomogram identifying patients at risk for premature graft loss.

MATERIALS AND METHODS

Patients

In this retrospective observational cohort study, 442 of 5582 patients had undergone kidney transplantation due to

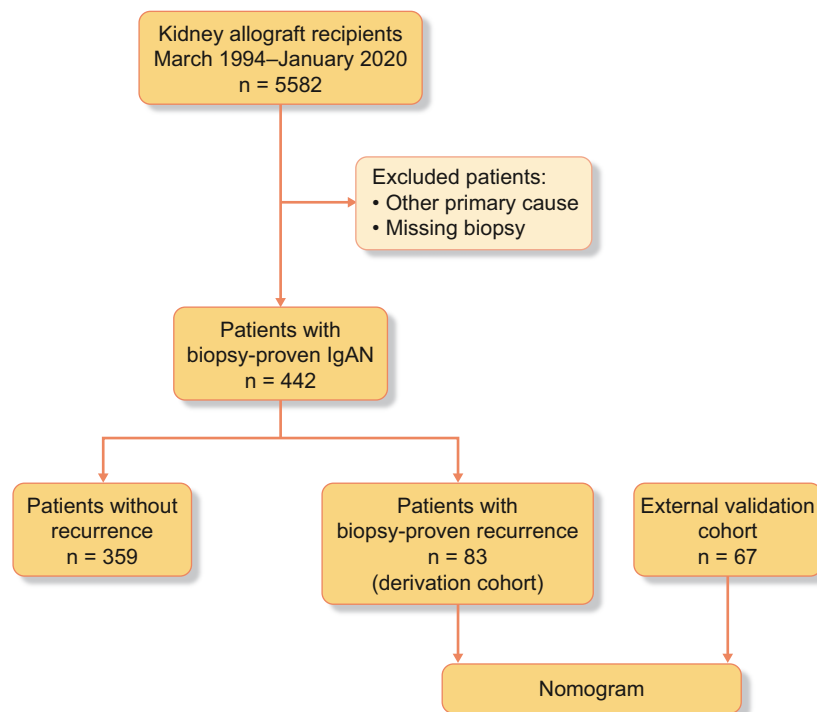


Figure 1: IgAN.

Table 1: Patient demographics.

Characteristics	Entire cohort (N = 442)	Biopsy-verified IgAN recurrence		P-value ^a
		Yes (n = 83)	No (n = 359)	
Recipient age (years), median (min–max)	45 (18–79)	40 (18–63)	46 (19–79)	<.0001
Recipient gender (male), n (%)	347 (79)	58 (70)	289 (80.5)	.038
Donor age (years), median (min–max)	51 (1–81)	51 (19–76)	51 (1–81)	.694
Donor gender (male), n (%)	135 (30.5)	14 (16.8)	121 (33.7)	.140
Retransplantation, n (%)	66 (14.9)	21 (25.3)	45 (12.5)	.003
Living donor, n (%)	117 (26.5)	24 (28.9)	93 (25.9)	.575
Peak PRA, median (min–max)	4 (0–98)	8 (0–96)	4 (0–98)	0.066
HLA mismatch, median (min–max)	3 (0–6)	3 (0–6)	3 (0–6)	0.852
Dialysis vintage (months), median (min–max)	18 (0–129)	16 (0–83)	18 (0–129)	0.841
Cold ischaemia (hours), median (min–max)	14 (0–27)	14 (0–26)	14 (0–27)	0.612
Post-transplant, n (%)				
Repeated erythrocyturia	120 (27.1)	51 (61.4)	69 (19.2)	<0.001
Repeated proteinuria	140 (31.7)	56 (67.5)	84 (23.4)	<0.001
T-cell-depletive induction	165 (37)	36 (44)	129 (36)	0.165

Erythrocyturia was defined as >10 erythrocytes/ μ l. Proteinuria was defined as urinary protein excretion >0.3 g/day.

^aP-values for group comparison based on the Mann–Whitney U test for continuous variables and Pearson's chi-squared test for categorical variables. $P < .05$ was considered significant.

biopsy-proven IgAN from 1994 to 2020 (Fig. 1). Most patients were males who received primary kidney transplants from deceased donors. Repeat transplantations were performed in 66 patients. Detailed patient and donor characteristics are given in Table 1. The recurrence of IgAN after kidney transplantation was biopsy proven by case or protocol biopsies in 83 patients (18.8%) during the study follow-up. The first biopsy, which proved the IgAN recurrence, was used as a reference for laboratory and clinical assessments.

To study risk factors for IgAN recurrence, the following variables were recorded: gender, age, donor type, donor age, human

leucocyte antigen (HLA) mismatch, panel reactive antibody (PRA), cold ischaemia time, time on dialysis, induction immunosuppression, any proteinuria, erythrocyturia and date of graft loss or patient death.

To study risk factors for graft loss, variables obtained at the date of graft biopsy-confirming recurrence were eGFR, proteinuria (>1 g/day), erythrocyturia (>10 erythrocytes/ μ l), C4d staining in histology, time to recurrence, MEST-C score, antihypertensive therapy, renin–angiotensin–aldosterone system (RAAS) inhibitors, steroid therapy and indication biopsy status.

The maintenance immunosuppression consisted of calcineurin inhibitors [CNIs; $n = 78$ (94%); 9 on cyclosporine, 69 on tacrolimus] in combination with mycophenolate mofetil [MMF; $n = 71$ (91%)] and steroids [$n = 77$ (93%)]. Five patients had received CNI-free regimens. Because the vast majority (95%) of patients had received tacrolimus along with MMF for immunosuppression, those variables were not particularly studied. In patients with histologically proven IgAN recurrence, steroid pulses were initiated in cases with present crescents ($n = 4$), RAAS inhibitors were given to all patients with recurrent IgAN.

The patient clinical and histological data were retrieved from the hospital's internal database. This article is compliant with the Strengthening the Reporting of Observational Studies in Epidemiology statement.

Pathology

A total of 83 graft biopsies confirming recurrence were scored according to the Oxford MEST-C scoring system [17], defined as follows: mesangial hypercellularity ≤ 0.5 (M0) and > 0.5 (M1); endocapillary hypercellularity absence (E0) and presence (E1); segmental glomerulosclerosis absence (S0) and presence (S1); tubular atrophy/interstitial fibrosis $< 25\%$ (T0), 25–50% (T1) or $> 50\%$ (T2); and cellular/fibrocellular crescents absent (C0), 1–25% (C1) or $> 25\%$ (C2).

Validation cohort

An independent cohort of 67 patients transplanted between 1979 and 2020 from Oslo University Hospital was included in the study as a validation cohort to validate nomogram performance. The demographics of the validation cohort are given in Supplementary Table S1.

Statistics

Data are presented as medians with minimum and maximum for continuous variables and counts with percentages for categorical variables. Continuous variables were compared by the Mann–Whitney U test and categorical variables by Pearson's chi-squared test. The graft and patient survival, proteinuria and erythrocyturia-free intervals were evaluated by Kaplan–Meier analysis using the logrank test. To investigate the significance of each prognostic factor for IgAN recurrence and allograft loss, univariable Cox proportional hazards models were created. The optimal cut-off point for recipient age as a risk for IgAN recurrence was defined by receiver operating characteristics (ROC) analysis at the maximal specificity and sensitivity (as < 43 years of age). Potential predictors of graft loss/IgAN recurrence were included in the multivariable model based on their significance in the univariable analysis after checking their co-linearity. Patients with missing values in the evaluated variables were excluded from the analysis.

To identify prognostic predictors (known at the time of diagnostic biopsy) of graft loss in patients with IgAN recurrence, we developed a multivariable Cox regression model based on the most significant variables from the univariable model ($P < .2$) and clinically relevant parameters. Multicollinearity of explanatory variables was checked by calculation of the variance inflation factor (VIF) using the *car* package in R software (<https://CRAN.R-project.org/package=car>) and variables with the highest VIF were not retained in the final model (MEST-C score and indication biopsy status). A nomogram was constructed to predict 2- and 5-year prognosis after diagnostic biopsy with IgAN recurrence as previously described, using the *rms* package in R software

(<https://CRAN.R-project.org/package=rms>) [24]. The *DynNom* package (<https://CRAN.R-project.org/package=DynNom>) was used to create a dynamic nomogram, which was then deployed on <https://www.shinyapps.io/>. The dynamic nomogram is publicly accessible at <http://research.ikem.cz/hrup/graftsurvivalreigan2021/nomogram>.

The internal validation of the nomogram was performed with the bootstrap set to 1000. The discrimination of the nomogram was evaluated by a concordance index and a calibration plot was performed to evaluate the prediction performance of the nomogram.

An independent cohort of 67 patients with IgAN recurrence from Oslo University Hospital was used for external validation. The discrimination of nomograms in the derivation and external cohorts was evaluated by the concordance index, which was internally validated with a bootstrap set to 1000. The calibration plots were performed to evaluate the prediction performance of the nomogram by comparing the observed and predicted survival probability over the 2 and 5 years after IgAN recurrence in derivation and external cohorts using the *rms* package in R software.

P-values $< .05$ were considered significant. Statistical analysis was performed using R-studio version 4.0.3 (2020.10.10).

RESULTS

Recurrence of IgAN

The recurrence of IgAN was reported in 83 of 442 patients with biopsy-proven native kidney IgAN, with a median time to recurrence of 2.3 years. Those who experienced disease recurrence were likely to be younger at transplant compared with those without recurrence (median 40 versus 46 years; $P < .0001$). Similarly, more patients with IgAN recurrence had undergone retransplantation (25.3% versus 12.5%; $P = .003$) (Table 1). Proteinuria and haematuria were more common in patients with IgAN recurrence as compared with those without proven recurrence (67.5% versus 23.4%; $P < .001$ and 61.4% versus 19.2%; $P < .001$, respectively). C4d staining was detected in 14 samples. In all but three of them, glomerular deposits were present to various extents. Recipients with disease recurrence displayed significantly worse 10-year graft survival compared with recipients without recurrence (logrank $P < .001$) (Fig. 2).

Risk for IgAN recurrence

A Cox proportional hazards regression was applied to generate the proposed risk model of IgAN recurrence based on factors known at transplantation. Four statistically significant predictors of recurrent IgAN in the allograft were revealed in the univariable analysis: younger age at the time of transplantation [HR 2.14 for patients < 43 years of age (95% CI 1.38–3.36), $P < .001$], retransplantation [HR 2.34 (95% CI 1.41–3.88), $P < .001$], higher peak PRA [HR 1.01 (95% CI 1.00–1.02), $P = .02$] and female gender of the recipient [HR 1.75 (95% CI 1.09–2.81), $P = .019$]. Only recipients < 43 years of age [HR 2.20 (95% CI 1.41–3.43), $P < .001$], female gender of the recipient [HR 1.72 (95% CI 1.07–2.76), $P = .026$] and retransplantation [HR 1.98 (95% CI 1.13–3.36), $P = .016$] remained significant variables in multivariable analysis. A Cox proportional hazards model was created including patients after the first transplantation only. Similarly, younger age and female gender remained significant in multivariable analysis after the exclusion of retransplanted patients ($P < .001$ and $P = .016$, respectively) (Table 2, Supplementary Table S2).

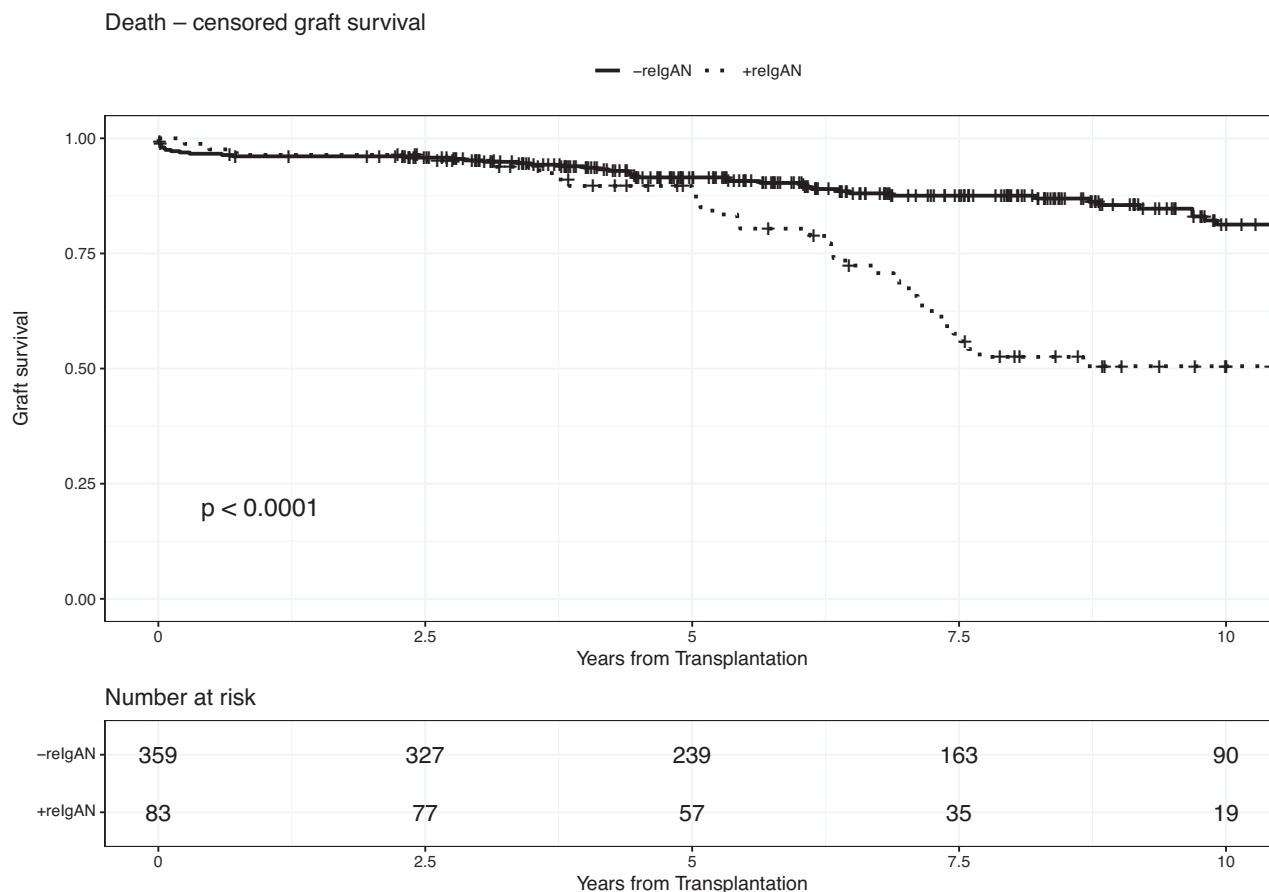


Figure 2: Patients with recurrence of the native disease have the same 5-year (88.1% versus 91.5%, logrank $P = .4$) and worse 10-year (50.5% versus 88.1%, logrank $P < .0001$) allograft survival compared with those without recurrence.

Table 2: Variables associated with recurrent IgAN.

Predictors	Univariable analysis, ^a		Multivariable analysis, ^a	
	HR (95% CI)	P-value	HR (95% CI)	P-value
Total cohort				
Recipient age <43 years	2.14 (1.38–3.36)	<.001	2.20 (1.41–3.43)	.001
Retransplantation	2.34 (1.41–3.88)	.001	1.98 (1.13–3.36)	.016
Peak PRA ^b	1.01 (1.00–1.02)	.020	1.01 (0.99–1.01)	.169
HLA mismatch	1.01 (0.88–1.17)	.856	–	–
Recipient gender (female)	1.75 (1.09–2.81)	.019	1.72 (1.07–2.76)	.026
Dialysis vintage (months)	1.00 (0.99–1.01)	.785	–	–
Cold ischaemia (hours)	0.99 (0.98–1.01)	.387	–	–
Donor age (years)	1.01 (1.00–1.03)	.136	–	–
Donor gender (male)	0.65 (0.42–1.02)	.062	–	–
Living donor	1.19 (0.74–1.91)	.481	–	–

^aUnivariable and multivariable associations were calculated by Cox regression. $P < .05$ was considered significant.

^bPRA measurement was not available in one patient.

^cHLA mismatch not available in 29 patients.

^dDialysis vintage unknown in 45 patients.

^eCold ischaemia unknown in 53 patients.

^fDonor age and gender unknown in 21 and 20 patients, respectively.

Outcomes of recurrent IgAN

Patients with biopsy-proven IgAN recurrence experienced worse 10-year graft survival (logrank $P < .001$) compared with those without proven recurrence (Fig. 2). In 43 of the 83 patients with IgAN recurrence, the allograft loss was noticed at a median of 3.2 years (minimum 0.2, maximum 12) after the graft biopsy. The median time from transplantation to graft loss was 6.8 years.

In univariable Cox regression analysis, age <43 years [HR 3.76 (95% CI 1.72–8.20), $P = .001$], erythrocyturia [HR 2.49 (95% CI 1.32–4.69), $P = .005$], proteinuria >1 g/day [HR 3.19 (95% CI 1.64–6.23), $P = .001$], indication biopsy [HR 3.76 (95% CI 1.56–9.06), $P = .003$] and C4d-positive staining in the allograft biopsy [HR 2.96 (95% CI 1.43–6.11), $P = .003$] were found to be associated with graft loss. From the MEST-C score, the T lesion [HR 1.98 (95% CI 1.26–3.11),

Table 3: Variables associated with graft failure in biopsy-proven recurrent IgAN.

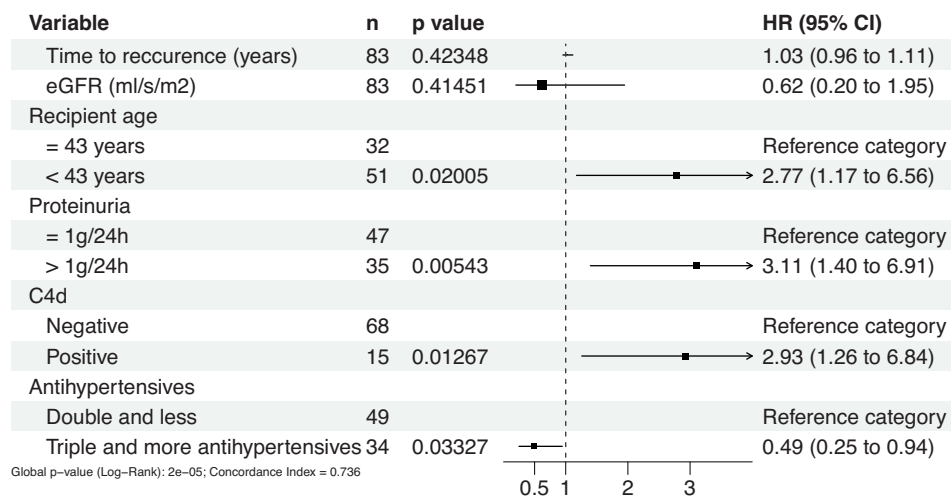
Predictors	Univariable analysis ^a		Multivariable analysis ^a	
	HR (95% CI)	P-value	HR (95% CI)	P-value
Recipient age <43 years	3.76 (1.72–8.20)	.001	2.77 (1.17–6.56)	.020
Time to recurrence (years)	1.07 (1.00–1.15)	.051	1.03 (0.96–1.12)	.423
eGFR at biopsy with recurrence (ml/s/1.73 m ²)	0.43 (0.15–1.23)	.117	0.62 (0.2–1.95)	.415
Erythrocyturia >10/μl at the time of biopsy	2.49 (1.32–4.69)	.005		
Proteinuria >1 g/24 hours at the time of biopsy ^b	3.19 (1.64–6.23)	.001	3.12 (1.40–6.91)	.005
Steroids weaning	1.39 (0.49–3.98)	.537		
ACEI/ARB	0.95 (0.42–2.15)	.897		
Antihypertensives (≥3)	0.83 (0.45–1.54)	.553	0.49 (0.25–0.94)	.033
Biopsy details				
Indication biopsy	3.76 (1.56–9.06)	.003		
C4d-positive biopsy	2.96 (1.43–6.11)	.003	2.93 (1.26–6.84)	.013
Oxford classification MEST-C score^c				
M	0.50 (0.23–1.11)	.087		
E	1.70 (0.89–3.24)	.107		
S	1.99 (1.03–3.86)	.041		
T	1.98 (1.26–3.11)	.003		
C	1.74 (0.98–3.09)	.059		
MEST-C score sum	1.25 (1.02–1.53)	.036		

ACEI: angiotensin-converting enzyme inhibitor; ARB: angiotensin receptor blocker.

^aUnivariable and multivariable associations were calculated by Cox regression. $P < .05$ was considered significant.

^bProteinuria at the time of biopsy was not determined in one patient.

^cMEST-C score was not available in three patients.

**Figure 3:** Multivariable model of allograft loss risk factors known at the time of biopsy-proven recurrence.

$P = .003$] and the sum of MEST-C scores [HR 1.25 (95% CI 1.02–1.53), $P = .036$] significantly predicted graft loss (Table 3).

A multivariable Cox model was constructed based on variables from univariable analysis. Erythrocyturia was excluded from the model since it is closely correlated with proteinuria, which was a stronger allograft loss predictor. In contrast, although there was no significant association of the antihypertensive therapy with graft failure in the univariable analysis, the multivariable model was adjusted for antihypertensive therapy, as hypertension severity is a well-known predictor of graft loss.

In the multivariable model adjusted for renal function and time to recurrence, age <43 years [HR 2.77 (95% CI 1.17–6.56), $P = 0.02$], proteinuria >1 g/day at biopsy [HR 3.12 (95% CI 1.40–6.91), $P = .005$] and C4d-positive staining [HR 2.93 (95% CI 1.26–

6.83), $P = .013$] were found to be significant risk factors for allograft loss. The use of three and more antihypertensive drugs implied a moderate protective effect on allograft failure [HR 0.49 (95% CI 0.25–0.94), $P = .033$; Table 3 and Fig. 3].

Dynamic nomogram to identify patients with recurrent IgAN at risk for premature graft loss

The multivariable Cox regression model based on six predictors of allograft loss after biopsy-proven IgAN recurrence (Table 3) was used to create a prognostic nomogram for 2- and 5-year survival from the biopsy (Fig. 4). To use the nomogram, the value of each predictor is read on its point scale. A total score is calculated by summing the points. In the final step, according to the sum, the

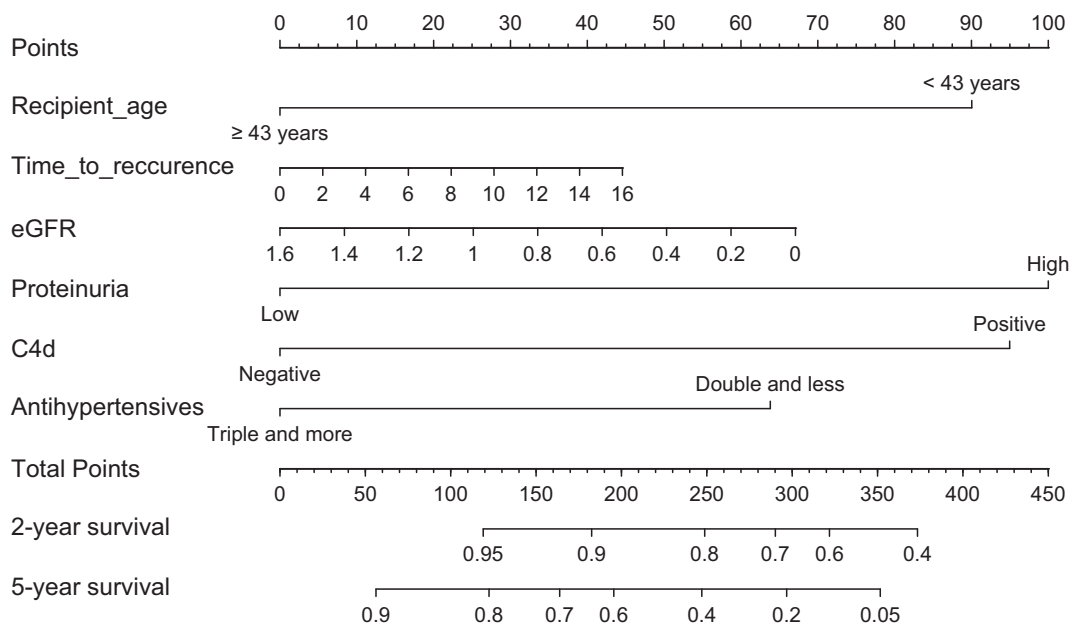


Figure 4: Prognostic nomogram for (A) 2-year and (B) 5-year graft survival after biopsy-proven IgAN recurrence. Time to recurrence in years; eGFR in ml/s/1.73 m².

corresponding predicted risk value is read on the probability scale by connecting the probability scale to the total score line. Thus the graft survival of individual patients can be calculated.

The nomogram showed good accuracy in the prediction of patient outcomes. The C-index of the created nomogram was 0.736 for the derivation cohort and 0.807 for the external cohort. The nomograms were validated internally, which yielded C-indexes of 0.697 and 0.745 for the derivation and external cohorts, respectively. The calibration curves displayed good agreement between the prediction capacity of the nomograms and the actual outcomes in both the derivation and validation cohorts (Fig. 5). To facilitate the use of the nomogram in clinical practice, we created a web-based dynamic nomogram at <http://research.ikem.cz/hrup/graftsurvivalreigan2021/nomogram>.

DISCUSSION

In the present study we identified younger age, female gender and retransplantation as risk factors for biopsy-proven IgAN recurrence. Next, in patients with biopsy-proven IgAN recurrence, we found younger age, proteinuria and C4d-positive histological staining to be significant variables negatively affecting allograft survival. An adjusted model for eGFR, time to recurrence and antihypertensive treatment was created to predict allograft failure after biopsy-proven recurrence with a C statistic of 0.736. This nomogram was validated on an external Norwegian cohort with C statistics of 0.807.

In native IgAN, higher proteinuria and lower eGFR were associated with poor outcome [2, 5]. Proteinuria is a well-known risk factor for the rapid progression of native kidney nephropathies as well as allograft disorders, including recurrent glomerulonephritis [25–27]. Similarly, our data suggest a negative impact of proteinuria on allograft survival. Aside from proteinuria, younger age at transplantation was associated with an increased risk for progression in our study. Similar to our results, younger age at transplantation has been described as an important risk factor for IgAN recurrence by others [1, 28, 29]. Such observations point to the severe and progressive phenotype of the original disease.

Interestingly, the use of more than three antihypertensive drugs at diagnosis of IgAN recurrence was associated with a better outcome. This observation is surprising, as hypertension itself is a well-known risk factor for progression in IgAN and other nephropathies [30]. The only possible explanation is better hypertension control in this cohort, as it is well known that a combination of various antihypertensives yields better renal outcomes [30–32].

In this study, C4d-positive histological staining of the biopsy was shown to be a strong predictor of rapid progression. Several studies have previously found complement lectin pathway activation to be associated with faster IgAN progression [7, 8, 33–36]. C4d is a well-known biomarker of complement cascade activation. C4d is associated with endocapillary proliferation [37] and positive C4d staining has been shown to be an independent risk factor for end-stage kidney disease [36]. Our study thus confirms that C4d-positive staining affects kidney allograft survival also in the case of IgAN recurrence. Recently, glomerular C4d positivity was found to double the risk of graft failure in the case of recurrence [38]. Peritubular C4d staining in kidney allografts is associated with antibody-mediated rejection (ABMR) and premature graft loss [39]. However, C4d-negative staining does not rule out an ABMR diagnosis [40], as well as the absence of donor-specific anti-HLA antibodies [41]. Our study was designed to find easily accessible variables to detect patients at the highest risk of premature graft loss and thus C4d positivity, regardless of localisation, was considered an important predictive variable.

The prognostic role of the Oxford classification MEST-C score [17] in IgAN recurrence has recently been discussed [42, 43]. Similarly, in our study we showed tubular atrophy/interstitial fibrosis and the sum of MEST-C scores to be associated with inferior kidney graft outcome in the univariable analysis. However, due to proven multicollinearity, we did not include the MEST-C score in the final model.

This study aimed to develop a publicly available prognostic nomogram based on clinical and histological variables that helps patients and caregivers estimate graft survival at the time when IgAN recurrence is histologically diagnosed. In the case of native

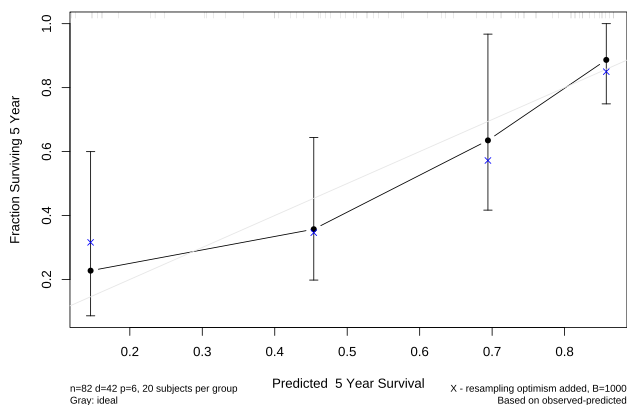
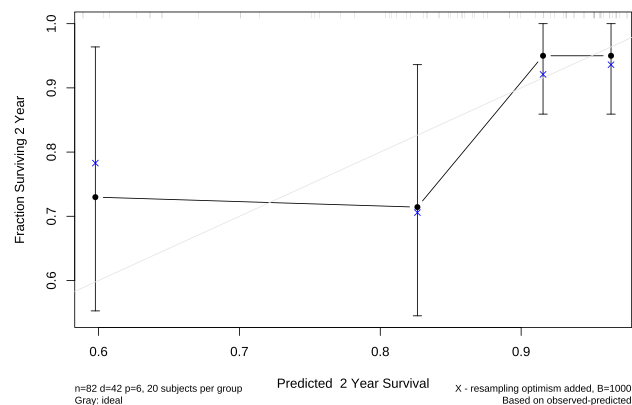
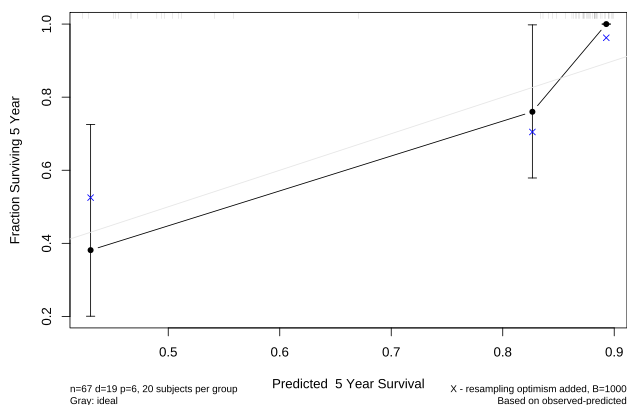
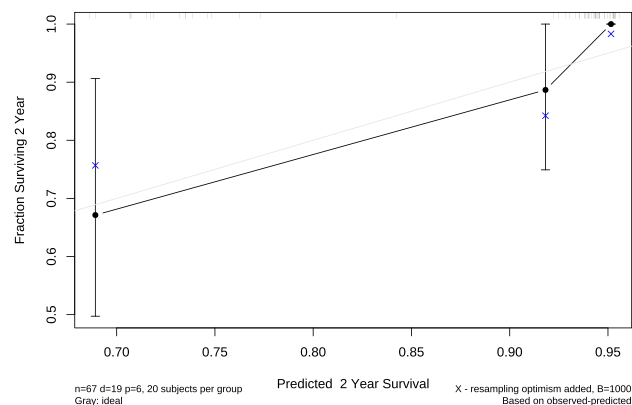
A: Derivation cohort**B: Validation cohort**

Figure 5: The calibration curve of the nomogram for predicting the 2- and 5-year renal survival for patients with IgAN recurrence in the (A) derivation and (B) external cohorts. The x-axis represents the predicted survival probability according to the nomogram and the y-axis displays the probability according to the Kaplan–Meier method.

IgAN, several predictive nomograms in IgAN were developed [44–47]. However, to the best of our knowledge, our nomogram is the first to predict outcomes in biopsy-proven IgAN recurrence. The nomogram was validated in an external cohort with similar performance, although both cohorts differed in some of the demographics.

There are also limitations that need to be discussed. Aside from the retrospective observational design, protocol biopsies were not performed later after transplantation and, similar to other studies, the rate of IgAN recurrence may be underestimated. However, case biopsies were performed in more progressive phenotypes, which improved the power, as the number of endpoints (allograft losses) was higher than in mild and non-progressive cases. Of note, recent data from the DAPA-CKD study (NCT03036150) [48] suggest gliflozins to be standard renoprotective agents in addition to RAAS blockers given to all patients with recurrent disease. Therefore, patient outcomes in the future may be better than those estimated from a nomogram constructed from retrospective data.

In conclusion, we identified a progressive phenotype of biopsy-proven IgAN recurrence. A new prognostic web-based nomogram can be used for the identification of patients at risk to whom innovative interventions should be applied.

SUPPLEMENTARY DATA

Supplementary data are available at [ndt](https://www.ndt.org) online.

FUNDING

This research was supported by the Ministry of Health of the Czech Republic under grants NV19-06-00031 and NU21-06-00021 and the National Institute for Research of Metabolic and Cardiovascular Diseases project (Programme EXCELES, Project No. LX22NPO5104), funded by the European Union Next Generation EU.

AUTHORS' CONTRIBUTIONS

K.B. and P.H. wrote the manuscript and collected the clinical data. O.V. designed the study, supervised the research and wrote the manuscript. P.H. and I.M. contributed to the statistical analysis. L.V. and M.K. was involved in the interpretation of pathology findings. G.M. provided the data and contributed to the external validation of the study. All authors read and approved the final manuscript.

DATA AVAILABILITY STATEMENT

The data supporting this article cannot be shared publicly due to the privacy of the individuals who participated in this study. The data will be shared upon reasonable request to the corresponding author.

CONFLICT OF INTEREST STATEMENT

The authors have no conflicts of interest to declare.

REFERENCES

- Moroni G, Longhi S, Quaglini S et al. The long-term outcome of renal transplantation of IgA nephropathy and the impact of recurrence on graft survival. *Nephrol Dial Transplant* 2013;**28**:1305–14. <https://doi.org/10.1093/ndt/gfs472>
- Infante B, Rossini M, Di Lorenzo A et al. Recurrence of immunoglobulin A nephropathy after kidney transplantation: a narrative review of the incidence, risk factors, pathophysiology and management of immunosuppressive therapy. *Clin Kidney J* 2020;**13**:758–67. <https://doi.org/10.1093/ckj/sfaa060>
- Cernoch M, Hrubá P, Kollar M et al. Intrarenal complement system transcripts in chronic antibody-mediated rejection and recurrent IgA nephropathy in kidney transplantation. *Front Immunol* 2018;**9**:2310. <https://doi.org/10.3389/fimmu.2018.02310>
- Briganti EM, Russ GR, McNeil JJ et al. Risk of renal allograft loss from recurrent glomerulonephritis. *N Engl J Med* 2002;**347**:103–9. <https://doi.org/10.1056/NEJMoa013036>
- Moroni G, Belingeri M, Frontini G et al. Immunoglobulin A nephropathy. Recurrence after renal transplantation. *Front Immunol* 2019;**10**:1332. <https://doi.org/10.3389/fimmu.2019.01332>
- Choy BY, Chan TM, Lo SK et al. Renal transplantation in patients with primary immunoglobulin A nephropathy. *Nephrol Dial Transplant* 2003;**18**:2399–404. <https://doi.org/10.1093/ndt/fgf373>
- Sahin OZ, Yavas H, Tasli F et al. Prognostic value of glomerular C4d staining in patients with IgA nephritis. *Int J Clin Exp Pathol* 2014;**7**:3299–304.
- Tortajada A, Gutierrez E, Pickering MC et al. The role of complement in IgA nephropathy. *Mol Immunol* 2019;**114**:123–32. <https://doi.org/10.1016/j.molimm.2019.07.017>
- Storarr J, Chinnadurai R, Sinha S et al. The epidemiology and evolution of IgA nephropathy over two decades: a single centre experience. *PLoS One* 2022;**17**:e0268421. <https://doi.org/10.1371/journal.pone.0268421>
- Moriyama T, Tanaka K, Iwasaki C et al. Prognosis in IgA nephropathy: 30-year analysis of 1,012 patients at a single center in Japan. *PLoS One* 2014;**9**:e91756. <https://doi.org/10.1371/journal.pone.0091756>
- Xie J, Kiryluk K, Wang W et al. Predicting progression of IgA nephropathy: new clinical progression risk score. *PLoS One* 2012;**7**:e38904. <https://doi.org/10.1371/journal.pone.0038904>
- Berthouix F, Mohey H, Laurent B et al. Predicting the risk for dialysis or death in IgA nephropathy. *J Am Soc Nephrol* 2011;**22**:752–61. <https://doi.org/10.1681/ASN.2010040355>
- Lv J, Yang Y, Zhang H et al. Prediction of outcomes in crescentic IgA nephropathy in a multicenter cohort study. *J Am Soc Nephrol* 2013;**24**:2118. <https://doi.org/10.1681/ASN.2012101017>
- Reich HN, Troyanov S, Scholey JW et al. Remission of proteinuria improves prognosis in IgA nephropathy. *J Am Soc Nephrol* 2007;**18**:3177–83. <https://doi.org/10.1681/ASN.2007050526>
- Rodrigues JC, Haas M, Reich HN. IgA nephropathy. *Clin J Am Soc Nephrol* 2017;**12**:677–86. <https://doi.org/10.2215/CJN.07420716>
- Roberts IS, Cook HT, Troyanov S et al. The Oxford classification of IgA nephropathy: pathology definitions, correlations, and reproducibility. *Kidney Int* 2009;**76**:546–56. <https://doi.org/10.1038/ki.2009.168>
- Cattran DC, Coppo R, Cook HT et al. The Oxford classification of IgA nephropathy: rationale, clinicopathological correlations, and classification. *Kidney Int* 2009;**76**:534–45. <https://doi.org/10.1038/ki.2009.243>
- Trimarchi H, Barratt J, Cattran DC et al. Oxford classification of IgA nephropathy 2016: an update from the IgA Nephropathy Classification Working Group. *Kidney Int* 2017;**91**:1014–21. <https://doi.org/10.1016/j.kint.2017.02.003>
- Jiang SH, Kennard AL, Walters GD. Recurrent glomerulonephritis following renal transplantation and impact on graft survival. *BMC Nephrol* 2018;**19**:344. <https://doi.org/10.1186/s12882-018-1135-7>
- McDonald SP, Russ GR. Recurrence of IgA nephropathy among renal allograft recipients from living donors is greater among those with zero HLA mismatches. *Transplantation* 2006;**82**:759–62. <https://doi.org/10.1097/01.tp.0000230131.66971.45>
- Clayton P, McDonald S, Chadban S. Steroids and recurrent IgA nephropathy after kidney transplantation. *Am J Transplant* 2011;**11**:1645–9. <https://doi.org/10.1111/j.1600-6143.2011.03667.x>
- Allen PJ, Chadban SJ, Craig JC et al. Recurrent glomerulonephritis after kidney transplantation: risk factors and allograft outcomes. *Kidney Int* 2017;**92**:461–9. <https://doi.org/10.1016/j.kint.2017.03.015>
- Cosio FG, Cattran DC. Recent advances in our understanding of recurrent primary glomerulonephritis after kidney transplantation. *Kidney Int* 2017;**91**:304–14. <https://doi.org/10.1016/j.kint.2016.08.030>
- Capanu M, Gönen M. Building a nomogram for survey-weighted cox models using R. *J Stat Softw Code Snippets* 2015;**64**:1–17.
- Zhang J, Chen GD, Qiu J et al. Graft failure of IgA nephropathy in renal allografts following living donor transplantation: predictive factor analysis of 102 biopsies. *BMC Nephrol* 2019;**20**:446. <https://doi.org/10.1186/s12882-019-1628-z>
- Avasare RS, Rosenstiel PE, Zaky ZS et al. Predicting post-transplant recurrence of IgA nephropathy: the importance of crescents. *Am J Nephrol* 2017;**45**:99–106. <https://doi.org/10.1159/000453081>
- Uffing A, Pérez-Saéz MJ, Jouve T et al. Recurrence of IgA nephropathy after kidney transplantation in adults. *Clin J Am Soc Nephrol* 2021;**16**:1247–55. <https://doi.org/10.2215/CJN.00910121>
- Jäger C, Stampf S, Molyneux K et al. Recurrence of IgA nephropathy after kidney transplantation: experience from the Swiss transplant cohort study. *BMC Nephrol* 2022;**23**:178. <https://doi.org/10.1186/s12882-022-02802-x>
- Berthouix F, El Deeb S, Mariat C et al. Antithymocyte globulin (ATG) induction therapy and disease recurrence in renal transplant recipients with primary IgA nephropathy. *Transplantation* 2008;**85**:1505–7. <https://doi.org/10.1097/TP.0b013e3181705ad4>
- Yu G, Cheng J, Jiang Y et al. Intensive systolic blood pressure lowering and kidney disease progression in IgA nephropathy: a cohort study. *Front Med (Lausanne)* 2022;**9**:813603. <https://doi.org/10.3389/fmed.2022.813603>
- Ptinopoulou AG, Pikilidou MI, Lasaridis AN. The effect of anti-hypertensive drugs on chronic kidney disease: a comprehensive review. *Hypertens Res* 2013;**36**:91–101. <https://doi.org/10.1038/hr.2012.157>
- Kanno Y, Okada H, Saruta T et al. Blood pressure reduction associated with preservation of renal function in hypertensive patients with IgA nephropathy: a 3-year follow-up. *Clin Nephrol* 2000;**54**:360–5.
- Espinosa M, Ortega R, Gómez-Carrasco JM et al. Mesangial C4d deposition: a new prognostic factor in IgA nephropathy. *Nephrol Dial Transplant* 2009;**24**:886–91. <https://doi.org/10.1093/ndt/gfn563>

34. Maillard N, Wyatt RJ, Julian BA et al. Current understanding of the role of complement in IgA nephropathy. *J Am Soc Nephrol* 2015;**26**:1503–12. <https://doi.org/10.1681/ASN.2014101000>
35. Faria B, Canão P, Cai Q et al. Arteriolar C4d in IgA nephropathy: a cohort study. *Am J Kidney Dis* 2020;**76**:669–78. <https://doi.org/10.1053/j.ajkd.2020.03.017>
36. Espinosa M, Ortega R, Sánchez M et al. Association of C4d deposition with clinical outcomes in IgA nephropathy. *Clin J Am Soc Nephrol* 2014;**9**:897–904. <https://doi.org/10.2215/CJN.09710913>
37. O'Shaughnessy MM, Liu S, Montez-Rath ME et al. Kidney transplantation outcomes across GN subtypes in the United States. *J Am Soc Nephrol* 2017;**28**:632–44. <https://doi.org/10.1681/ASN.2016020126>
38. Eder M, Kozakowski N, Omic H et al. Glomerular C4d in post-transplant IgA nephropathy is associated with decreased allograft survival. *J Nephrol* 2021;**34**:839–49.
39. Mengel M, Bogers J, Bosmans J-L et al. Incidence of C4d stain in protocol biopsies from renal allografts: results from a multicenter trial. *Am J Transplant* 2005;**5**:1050–6. <https://doi.org/10.1111/j.1600-6143.2005.00788.x>
40. Haas M, Sis B, Racusen LC et al. Banff 2013 meeting report: inclusion of C4d-negative antibody-mediated rejection and antibody-associated arterial lesions. *Am J Transplant* 2014;**14**:272–83.
41. Senev A, Coemans M, Lerut E et al. Histological picture of antibody-mediated rejection without donor-specific anti-HLA antibodies: clinical presentation and implications for outcome. *Am J Transplant* 2019;**19**:763–80. <https://doi.org/10.1111/ajt.15074>
42. Coppo R, Troyanov S, Bellur S et al. Validation of the Oxford classification of IgA nephropathy in cohorts with different presentations and treatments. *Kidney Int* 2014;**86**:828–36. <https://doi.org/10.1038/ki.2014.63>
43. Park S, Go H, Baek CH et al. Clinical importance of the updated Oxford classification in allograft IgA nephropathy. *Am J Transplant* 2019;**19**:2855–64. <https://doi.org/10.1111/ajt.15400>
44. Liu J, Duan S, Chen P et al. Development and validation of a prognostic nomogram for IgA nephropathy. *Oncotarget* 2017;**8**:94371–81. <https://doi.org/10.18632/oncotarget.21721>
45. Liu L-L, Zhu L-B, Zheng J-N et al. Development and assessment of a predictive nomogram for the progression of IgA nephropathy. *Sci Rep* 2018;**8**:7309.
46. Li F, Wei RB, Wang Y et al. Nomogram prediction model for renal anaemia in IgA nephropathy patients. *Open Med (Wars)* 2021;**16**:718–27. <https://doi.org/10.1515/med-2021-0284>
47. Barbour SJ, Coppo R, Zhang H et al. Evaluating a new international risk-prediction tool in IgA nephropathy. *JAMA Intern Med* 2019;**179**:942–52. <https://doi.org/10.1001/jamainternmed.2019.0600>
48. Heerspink HJL, Stefánsson BV, Correa-Rotter R et al. Dapagliflozin in patients with chronic kidney disease. *N Engl J Med* 2020;**383**:1436–46. <https://doi.org/10.1056/NEJMoa2024816>