

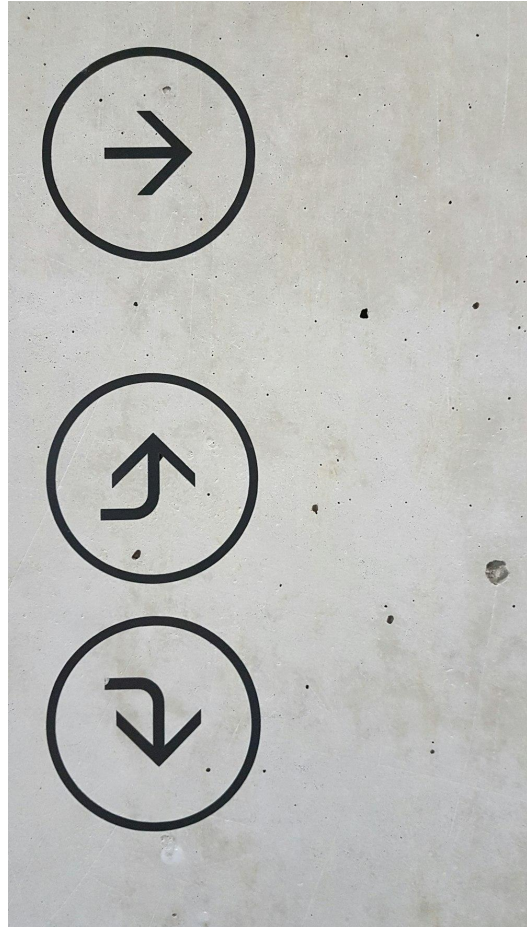


FAIR-IMPACT

Expanding FAIR solutions across EOSC

Exposing trustworthy
information from
thematic repositories:
FAIR-IMPACT contribution
to FAIR assessment
practices

24-01-2024
Robert Huber
Robert Ulrich



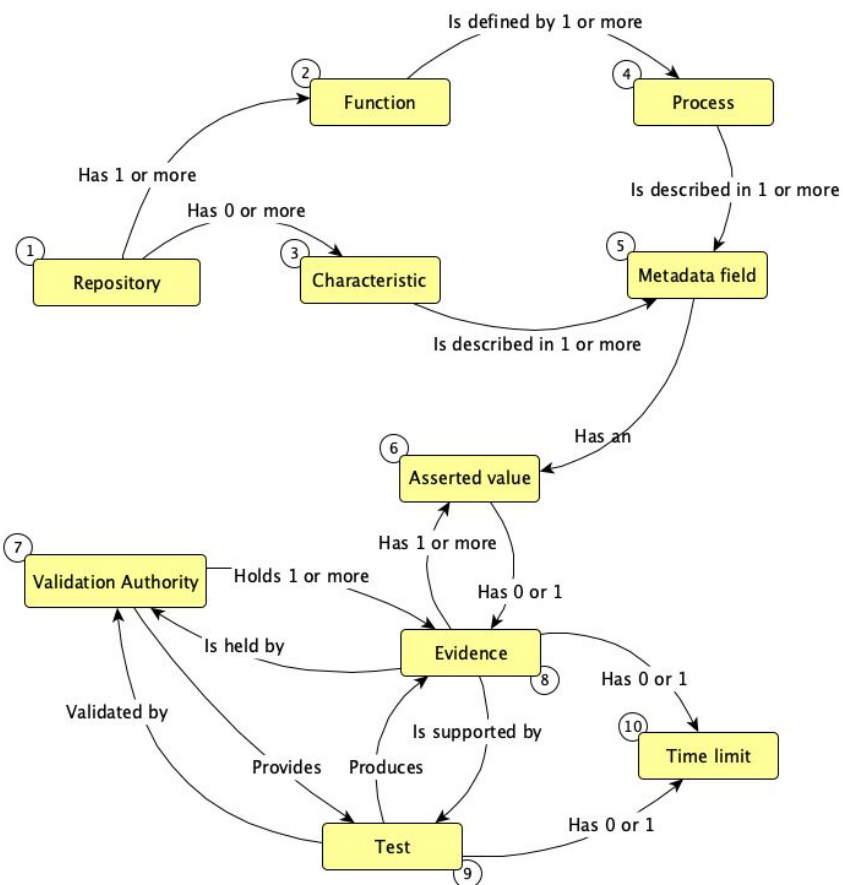
Guidelines for repositories and registries on exposing repository trustworthiness status and FAIR data assessments outcomes

Development of guidelines and mechanisms improving connections between repository registries and discovery portals, repository trustworthiness mechanisms (e.g. CoreTrustSeal) and FAIR digital object assessments. The aim is to enable seamless discovery of repositories (including their trustworthiness) and datasets (including their FAIRness).



Transparency & Standards

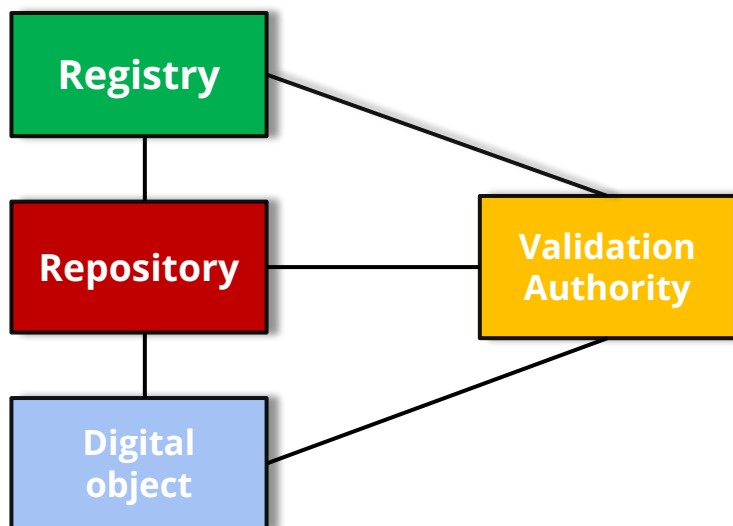
Data regarding FAIRness shall be provided following open technical standards and community recommendations such as RDF (with a focus on DCAT) and RDA outputs as to digital objects, (meta)data services & registries to foster interoperability and harmonization.



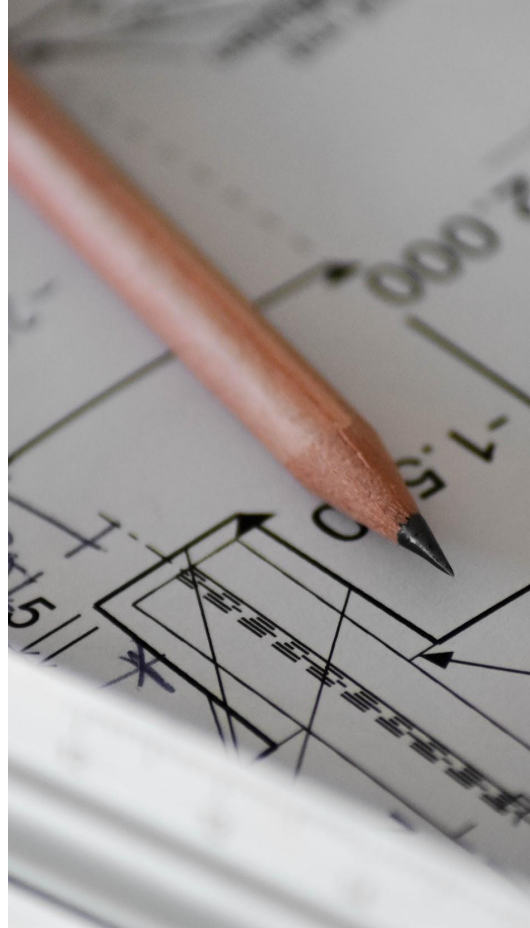
Evidence & Assessment

(Meta)data services providing information about their functions and activities should include evidence and links to authoritative third parties, such as CoreTrustSeal, enabling validation and assessment by human and automated processes.

Linking & Aggregation



As information varies in terms of level of detail, contexts, and time, it should be linked across different services and data providers to foster discovery and aggregation by registries, assessment tools etc. to provide additional value and insights to users.



Prototype

Its purpose is to transform the concepts into a tangible representation that allows to validate and understand limits and feasibility. Its goal is to collect feedback and ideas for added values from stakeholders and to revise and improve the initial concept . The envisioned demonstrator will start with the embedded organisations in FAIR Impact, but its scope is planned to be expanded later on. Maybe including you? Stay tuned!

Exposing data repository information

Google

Images Places Places sites Nearby Open now Bremen Videos In der Nähe Top rated All filters Tools

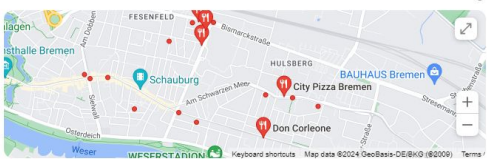
About 214,000,000 results (0.44 seconds)

Results for **Ostliche Vorstadt, Bremen** Use precise location

Places sites

See more →

Places



Wikipedia

Pizza
Dish

Pizza is a dish of Italian origin consisting of a usually round, flat base of leavened wheat-based dough topped with tomatoes, cheese, and often various other ingredients, which is then baked at a high temperature, traditionally in a wood-fired oven.

Origin: Italy

Nutrition Facts
Pizza, 14" regular crust
Sources include: USDA

Amount Per 100 grams

Google

Images Videos Types In computer News In statistics In research Pronunciation Examples All filters Tools

About 17,250,000,000 results (0.32 seconds)

Dictionary
Definitions from Oxford Languages Learn more

data
/ˈdeɪtə/

noun

facts and statistics collected together for reference or analysis.
"there is very little data available"

Similar: facts figures statistics details particulars specifics features

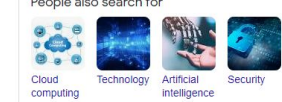
- the quantities, characters, or symbols on which operations are performed by a computer, which may be stored and transmitted in the form of electrical signals and recorded on magnetic, optical, or mechanical recording media.
- PHILOSOPHY**
things known or assumed as facts, making the basis of reasoning or calculation.

See more → [Feedback](#)

People also ask

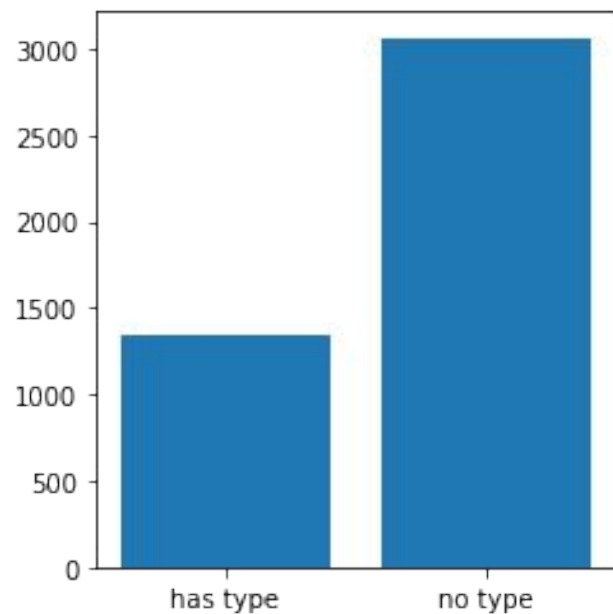
- What is your definition of data?
- Which is called a data?
- What is an example of data?

People also search for



Cloud computing Technology Artificial intelligence Security [Feedback](#)

Identities of re3data repositories



Dublin Core type; Schema.org type, OpenGraph or microdata type

Exposing repository identity and metadata

DCAT-AP Catalogue: „A catalogue or repository that hosts the Datasets or Data Services being described.”

Standards & Linking:

- Dublin Core

```
<meta name="DC.type" content="dcat:Catalog" />
```

- DCAT

- RDFa, Signposting

```
<link rel="describedby" href="https://doi.pangaea.de/dcat" type="application/ld+json" profile="http://www.w3.org/ns/dcat#" />
```

- Schema.org

EXAMPLE 1

```
ex:catalog
  a dcat:Catalog ;
  dcterms:title "Imaginary Catalog"@en ;
  dcterms:title "Catálogo imaginario"@es ;
  rdfs:label "Imaginary Catalog"@en ;
  rdfs:label "Catálogo imaginario"@es ;
  foaf:homepage <http://dcat.example.org/catalog> ;
  dcterms:publisher ex:transparency-office ;
  dcterms:language <http://id.loc.gov/vocabulary/iso639-1/en> ;
  dcat:dataset ex:dataset-001 , ex:dataset-002 , ex:dataset-003 ;
  .
```

Exposing repository capabilities (services)

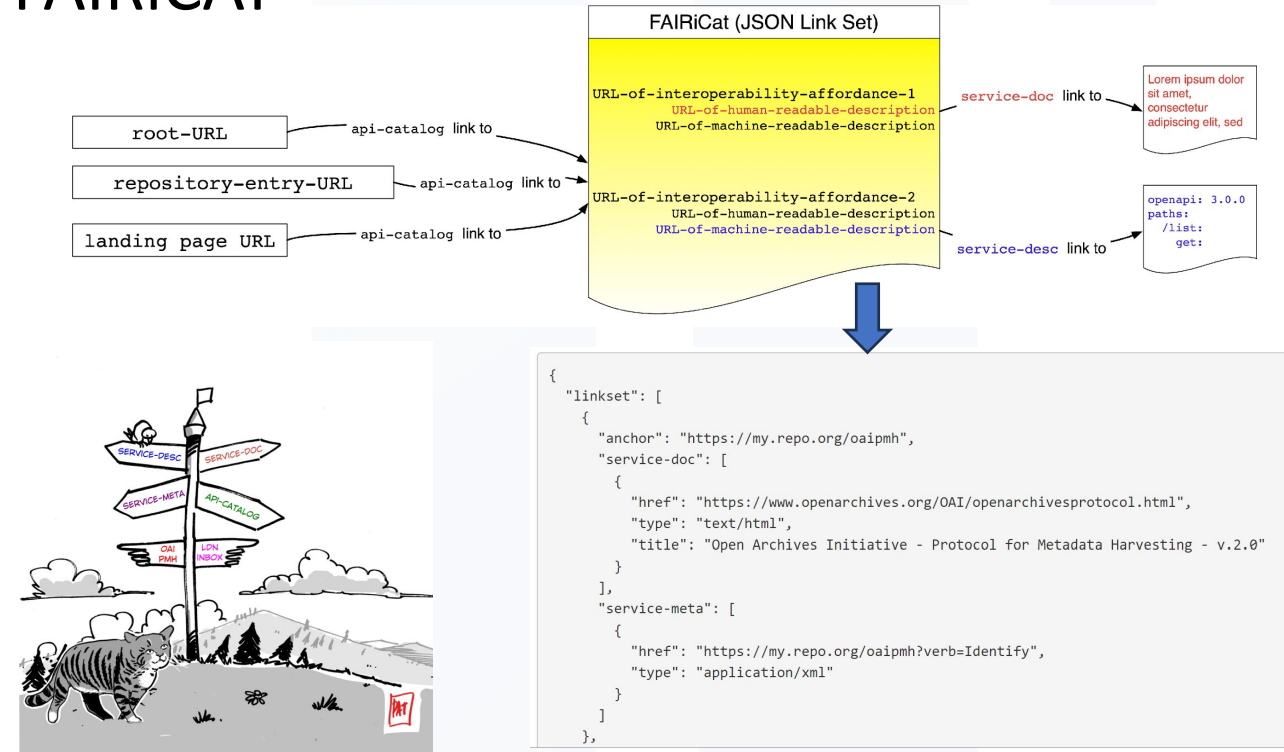
DCAT

EXAMPLE 60

```

ex:EEA-CSW-Endpoint
  rdf:type dcat:DataService ;
  dcterms:type <http://inspire.ec.europa.eu/metadata-codelist/SpatialDataServiceCategory/infoCatalogue>;
  dcterms:accessRights <http://publications.europa.eu/resource/authority/access-right/PUBLIC>;
  dcterms:conformsTo <http://www.opengis.net/def/serviceType/ogc/csw>;
  dcterms:description "The EEA public catalogue of spatial datasets references the spatial datasets used by the European Environment Agency as well as the spatial datasets produced by or for the EEA. In the latter case, when datasets are publicly available, a link to the location from where they can be downloaded is included in the dataset's metadata. The catalogue has been initially populated with the most important spatial datasets already available on the data&maps section of the EEA website and is currently updated with any newly published spatial dataset."@en ;
  dcterms:identifier "eea-sdi-public-catalogue" ;
  dcterms:issued "2012-01-01"^^xsd:date ;
  dcterms:license <https://creativecommons.org/licenses/by/2.5/dk/>;
  dcterms:spatial [
    rdf:type dcterms:Location ;
    dcat:bbox "POLYGON((-180 90,180 90,180 -90,-180 -90,-180 90))"^^gsp:wktLiteral ;
  ] ;
  dcterms:title "European Environment Agency's public catalogue of spatial datasets."@en ;
  dcterms:type <http://inspire.ec.europa.eu/metadata-codelist/ResourceType/service>;
  dcterms:type <http://inspire.ec.europa.eu/metadata-codelist/SpatialDataServiceType/discovery>;
  dcat:contactPoint ex:EEA ;
  dcat:endpointDescription <https://sdi.eea.europa.eu/catalogue/srv/eng/csw?service=CSW&request=GetCapabilities>;
  dcat:endpointURL <http://sdi.eea.europa.eu/catalogue/srv/eng/csw>;
  
```

FAIRiCAT

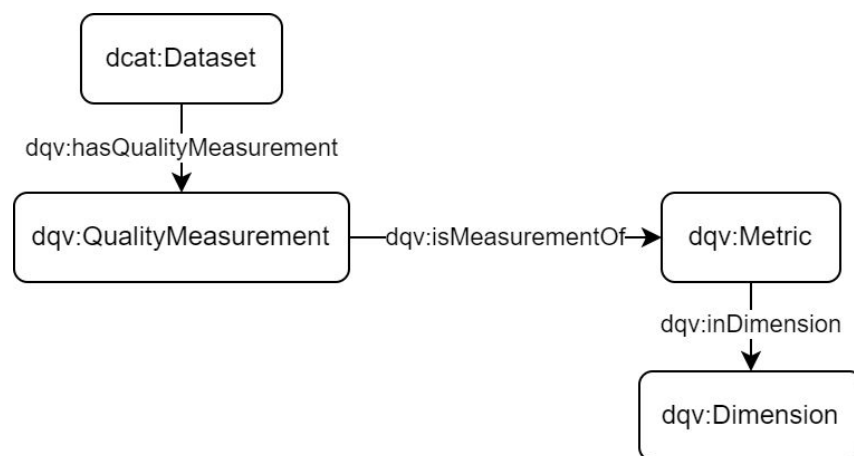


<https://signposting.org/FAIRiCAT/>

Exposing FAIR metrics & results

Standards & Linking:

DCAT + DQV (Data Quality Vocabulary)



EXAMPLE 42

```

ex:genoaBusStopsDataset
  dqv:hasQualityMeasurement ex:genoaBusStopsDatasetCompletenessMeasurement .

ex:genoaBusStopsDatasetCompletenessMeasurement a dqv:QualityMeasurement ;
  dqv:computedOn ex:genoaBusStopsDataset ;
  dqv:isMeasurementOf ex:completenessWRTExpectedNumberOfEntities ;
  dqv:value "0.6833333"^^xsd:decimal ;
  prov:wasAttributedTo ex:myQualityChecker ;
  prov:generatedAtTime "2018-05-27T02:52:02Z"^^xsd:dateTime ;
  prov:wasGeneratedBy ex:myQualityChecking
  
```

Exposing FAIR metrics & results

- FAIR metrics
 - RDF (DQV)
 - Content negotiation / suffix / signposting

<https://f-uji.net/metrics/0.5.ttl>

- FAIR assessment results
 - RDF (DQV)

<https://f-uji.net/result/560.ttl>

```
<https://f-uji.net/>
  a prov:SoftwareAgent ;
  rdfs:label "F-UJI FAIR Assessment Tool" ;
  owl:versionInfo "2.2.5" .

<urn:f-uji:assessment_activity:560>
  a prov:Activity ;
  prov:wasAssociatedWith <https://f-uji.net/> ;
  prov:used "https://f-uji.net/result/560" .

<https://f-uji.net/result/560>
  a prov:QualityMetadata, dcat:Dataset ;
  prov:generatedBy <urn:f-uji:assessment_activity:560> ;
  dqv:hasQualityMeasurement "frsc:FsF-A1-02M_score",
  frsc:FsF-A1-02M-1_score .

frsc:FsF-FAIR_score
  a dqv:QualityMeasurement ;
  dqv:isMeasurementOf fmet:FsF-FAIR ;
  qb:dataSet <https://f-uji.net/result/560> ;
  dqv:computedOn <https://doi.org/10.17863/CAM.14473> ;
  dqv:value 8.125000e+1 .
```

eosc | FAIR-IMPACT
Expanding FAIR solutions across EOSC



@fairimpact_eu /company/fair-impact-eu-project



Funded by
the European Union