

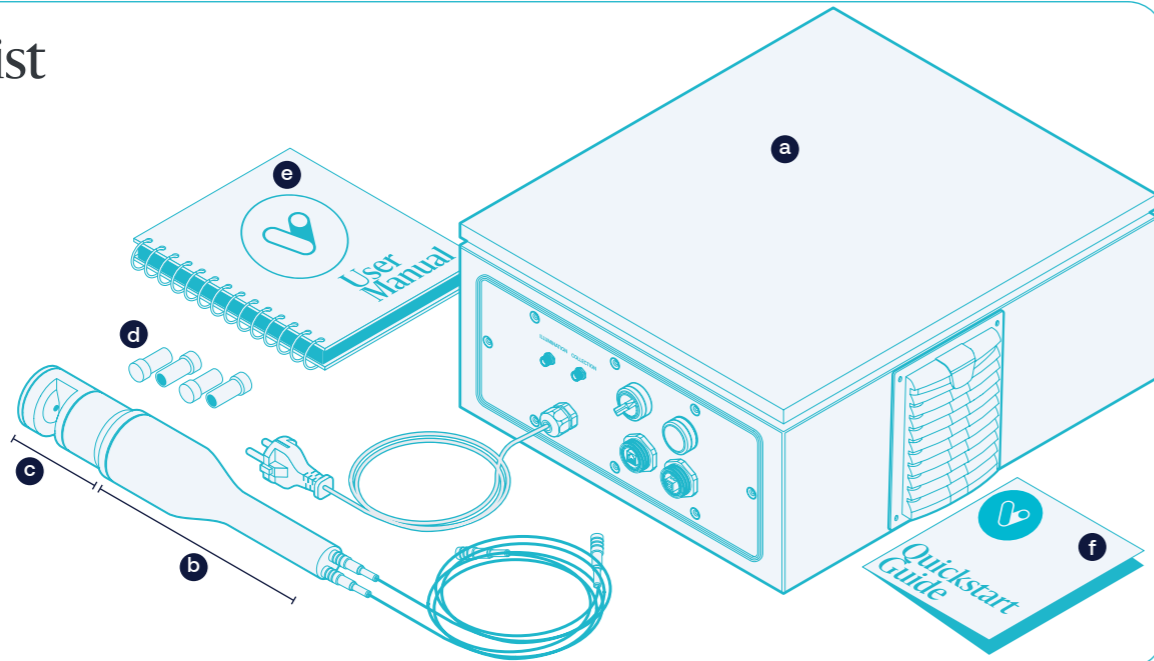
VisumParticle Quickstart Guide

i **DISCLAIMER:**
The images used in this guide are illustrative and do not correspond to 100% of reality.
Visum® is registered trademark of IRIS Technology Solutions SL



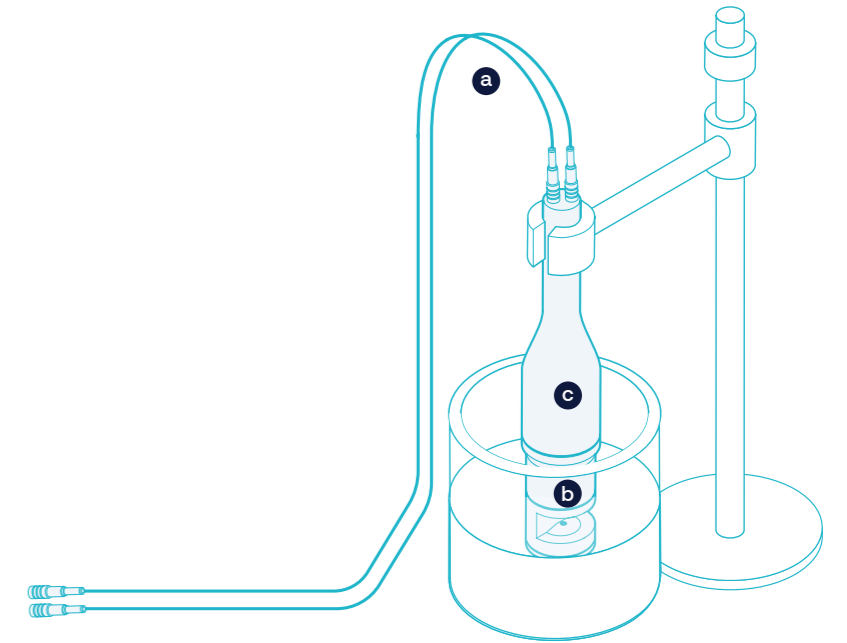
1 Packing List

- a Main Cabinet
- b Custom Adaptor
- c Probe
- d Dust Caps
- e User's Manual
- f Quickstart Guide



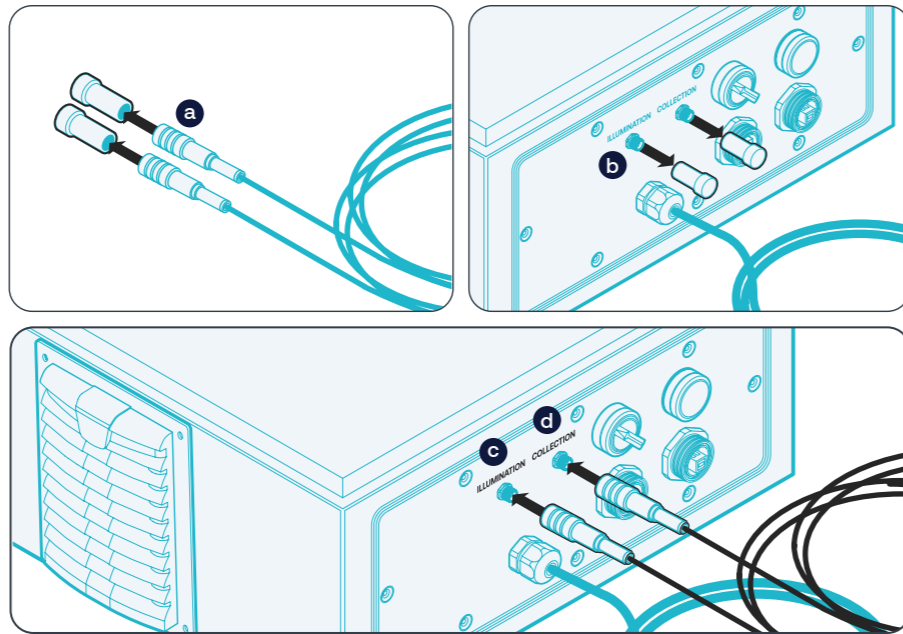
2 Probe Installation

- a Unpack the probe and fibres **carefully**.
- b Insert the probe into the process measurement port.
- c Use the custom adaptor provided to fix the probe.



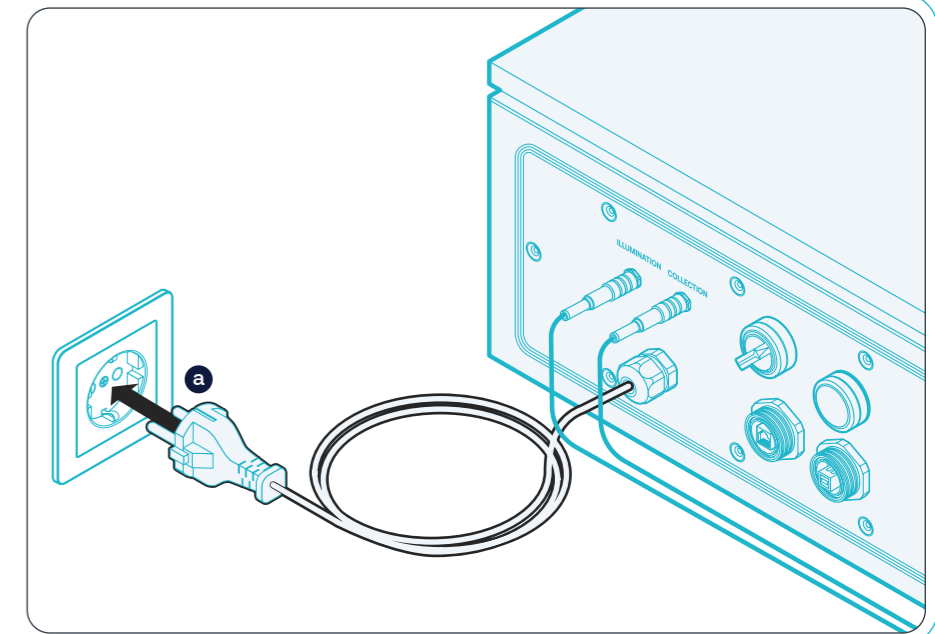
3 Fibers Installation

- a Remove the dust caps from the fibres.
- b Remove the dust caps from the cabinet fibres connector.
- c Connect the fibre labelled "ILLUMINATION" to the appropriate connector.
- d Connect the fibre labelled "COLLECTION" to the appropriate connector.



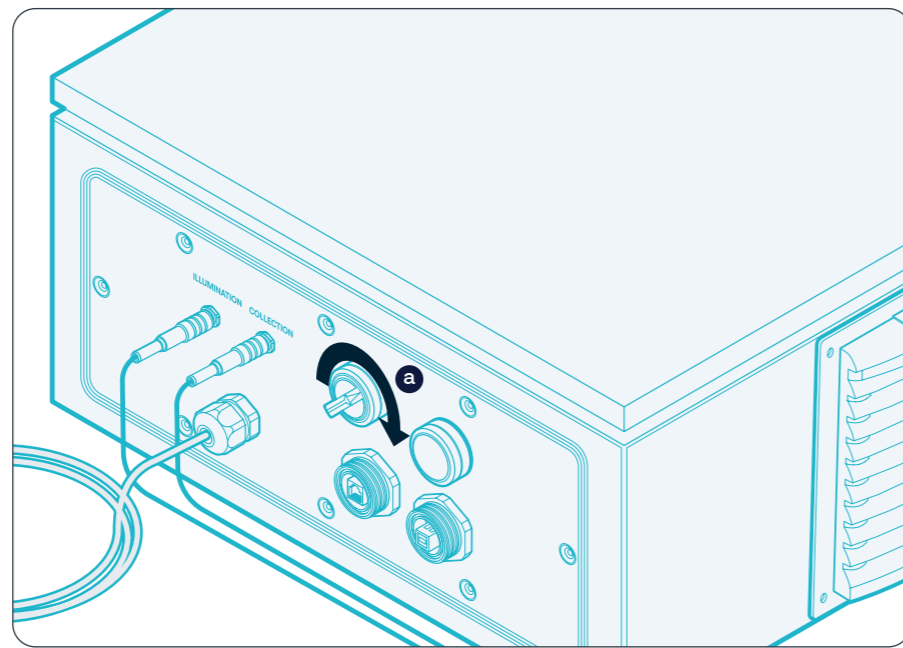
4 Power the system

- a Plug the CEE 7/7 connector into a wall outlet (230VAC).



5 Turn on

- a Turn on the power switch.



6 User Interface Configuration

- a Connect a LAN cable to the User Interface PC.
- b Follow the User's Manual to configure the connection.

