

GW1929

CAS Registry No.: 196808-24-9

Formal Name: 2-((2-benzoylphenyl)amino)-3-(4-(2-(methyl(pyridin-2-yl)amino)ethoxy)phenyl)propanoic acid

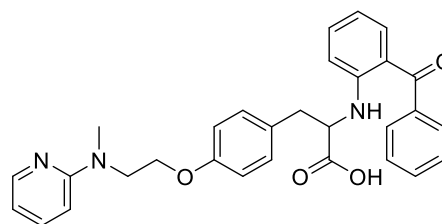
EUBOPEN ID: EUB0000570a

Molecular Formula: C₃₀H₂₉N₃O₄

Molecular Weight: 495.58 g/mol

Smiles: CN(CCOC1=CC=C(C=C1)CC(C(=O)O)NC2=CC=CC=C2C(=O)C3=C(C=CC=C3)C4=CC=CC=N4

Recommended concentration: 1 μM



Biological activity

| | Type | IC ₅₀ /EC ₅₀ [μM] | Reference |
|-----------------|-----------------------|--|---|
| Main NR target: | NR1C3 (PPARγ) Agonist | 0.006 | https://doi.org/10.1016/j.bmcl.2009.12.107 |
| NR off-target: | | | |

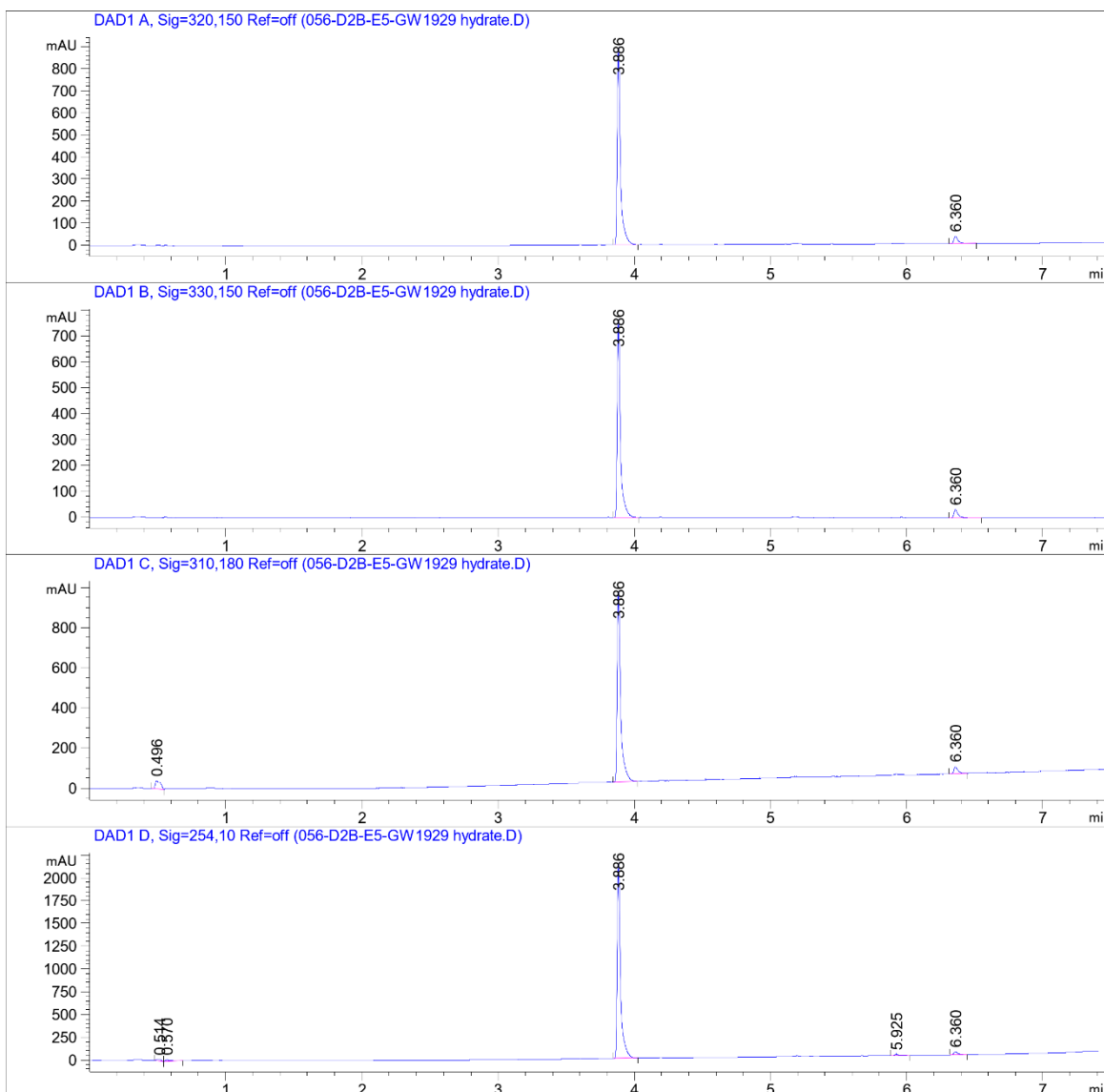
COMPOUND INFORMATION

Purity

Data File W:\analyti...C_ECH01-3_FirstPass 2021-03-20 13-21-54\056-D2B-E5-GW1929 hydrate.D

Sample Name: GW1929 hydrate

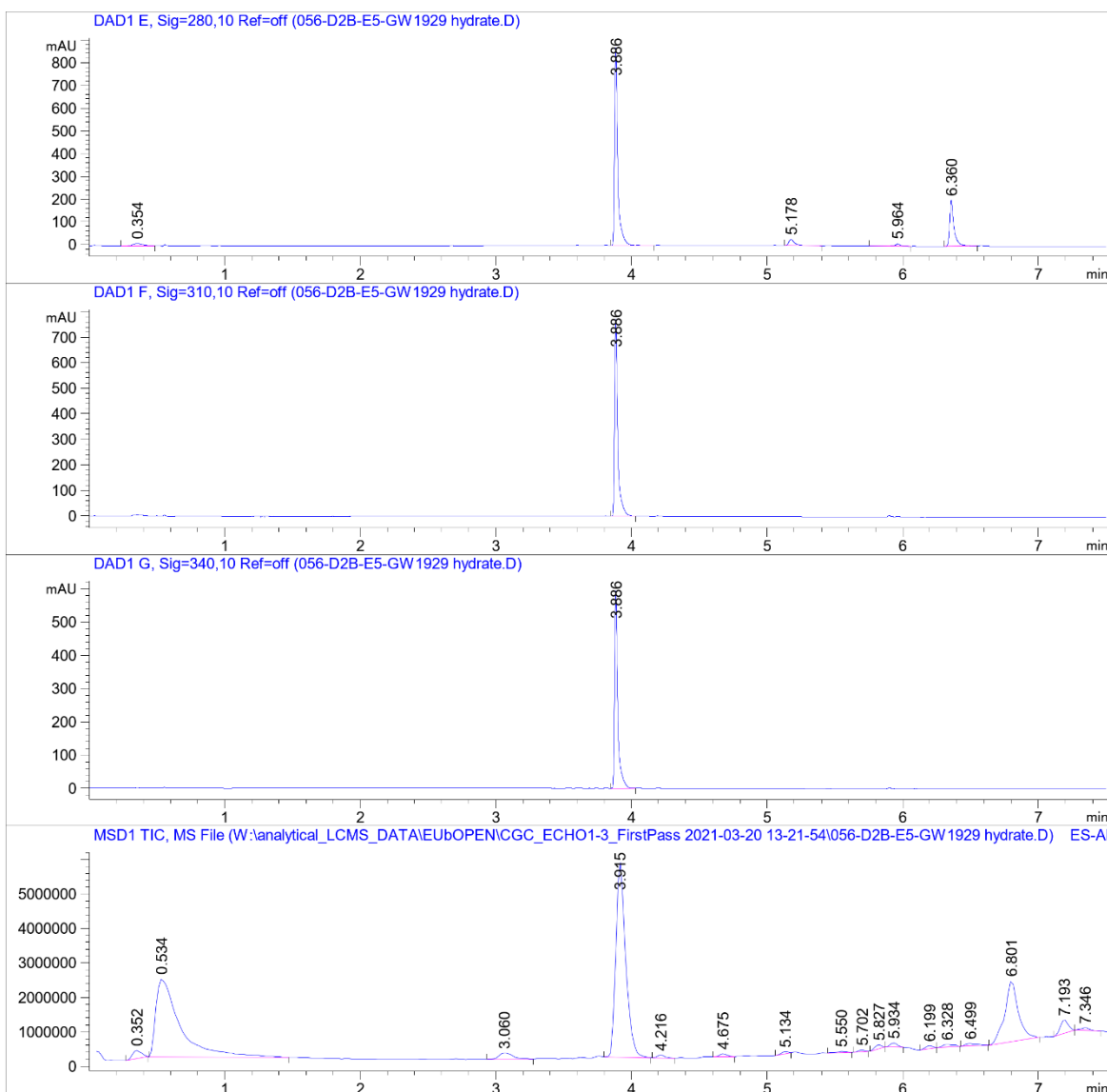
```
=====
Acq. Operator   : SYSTEM                      Seq. Line :   56
Sample Operator : SYSTEM
Acq. Instrument : LCMS test                   Location  : D2B-E5
Injection Date  : 3/20/2021 11:35:07 PM      Inj       :    1
                                           Inj Volume: Inj prog
Sequence File   : W:\analytical_LCMS_DATA\EUBOPEN\CGC_ECH01-3_FirstPass 2021-03-20 13-21-54
                  \CGC_ECH01-3_FirstPass.S
Method          : W:\analytical_LCMS_DATA\EUBOPEN\CGC_ECH01-3_FirstPass 2021-03-20 13-21-54
                  \CGL_FIRSTPASS_GENERALMETHOD_VIAL3+4_20210319.M (Sequence Method)
Last changed    : 3/19/2021 5:35:24 PM by SYSTEM
Method Info     : CGL wellplate, 0.5 uL of 10 mM DMSO, general method
=====
```



COMPOUND INFORMATION

Data File W:\analyti...C_ECH01-3_FirstPass 2021-03-20 13-21-54\056-D2B-E5-GW1929 hydrate.D

Sample Name: GW1929 hydrate



COMPOUND INFORMATION



Data File W:\analyti...C_ECH01-3_FirstPass 2021-03-20 13-21-54\056-D2B-E5-GW1929 hydrate.D

Sample Name: GW1929 hydrate

MS Signal: MSD1 TIC, MS File, ES-API, Pos, Scan, Frag: 70, "POS Scan"
Spectra from peak tops.
Noise Cutoff: 1000 counts.
Reportable Ion Abundance: > 50%.
LC Signal: DAD1 A, Sig=320,150 Ref=off
Peak matching window: 0.1 min

| Retention Time (LC) | LC Area | Retention Time (MS) | MS Area | Mol. Weight or Ion |
|---------------------|---------|---------------------|----------|----------------------------------|
| - | - | 0.352 | 1091682 | 182.90 I 158.00 I 130.10 I |
| - | - | 0.534 | 28161148 | 157.00 I |
| - | - | 3.060 | 1212548 | 217.00 I |
| 3.886 | 1476 | 3.915 | 28685804 | 496.20 I |
| - | - | 4.216 | 324718 | 452.20 I 226.60 I |
| - | - | 4.675 | 394699 | 326.30 I |
| - | - | 5.134 | 201380 | 295.10 I 225.10 I 198.10 I |
| - | - | 5.550 | 182296 | 326.20 I 280.20 I 102.20 I |
| - | - | 5.702 | 172448 | 280.20 I |
| - | - | 5.827 | 410675 | 296.20 I |
| - | - | 5.934 | 403189 | 296.20 I 294.10 I 280.20 I |
| - | - | 6.199 | 334305 | 280.20 I 228.20 I |
| 6.360 | 73 | 6.328 | 447837 | 254.20 I |
| - | - | 6.499 | 487698 | 280.20 I |
| - | - | 6.801 | 12089915 | 282.20 I |
| - | - | 7.193 | 1578756 | 284.20 I 282.20 I |
| - | - | 7.346 | 296846 | 400.30 I 282.20 I |

