

Mosaic alignments for paper ‘Gene conversion  
drives allelic dimorphism in two paralogous  
surface antigens of the malaria parasite *P.*  
*falciparum*’

February 2023

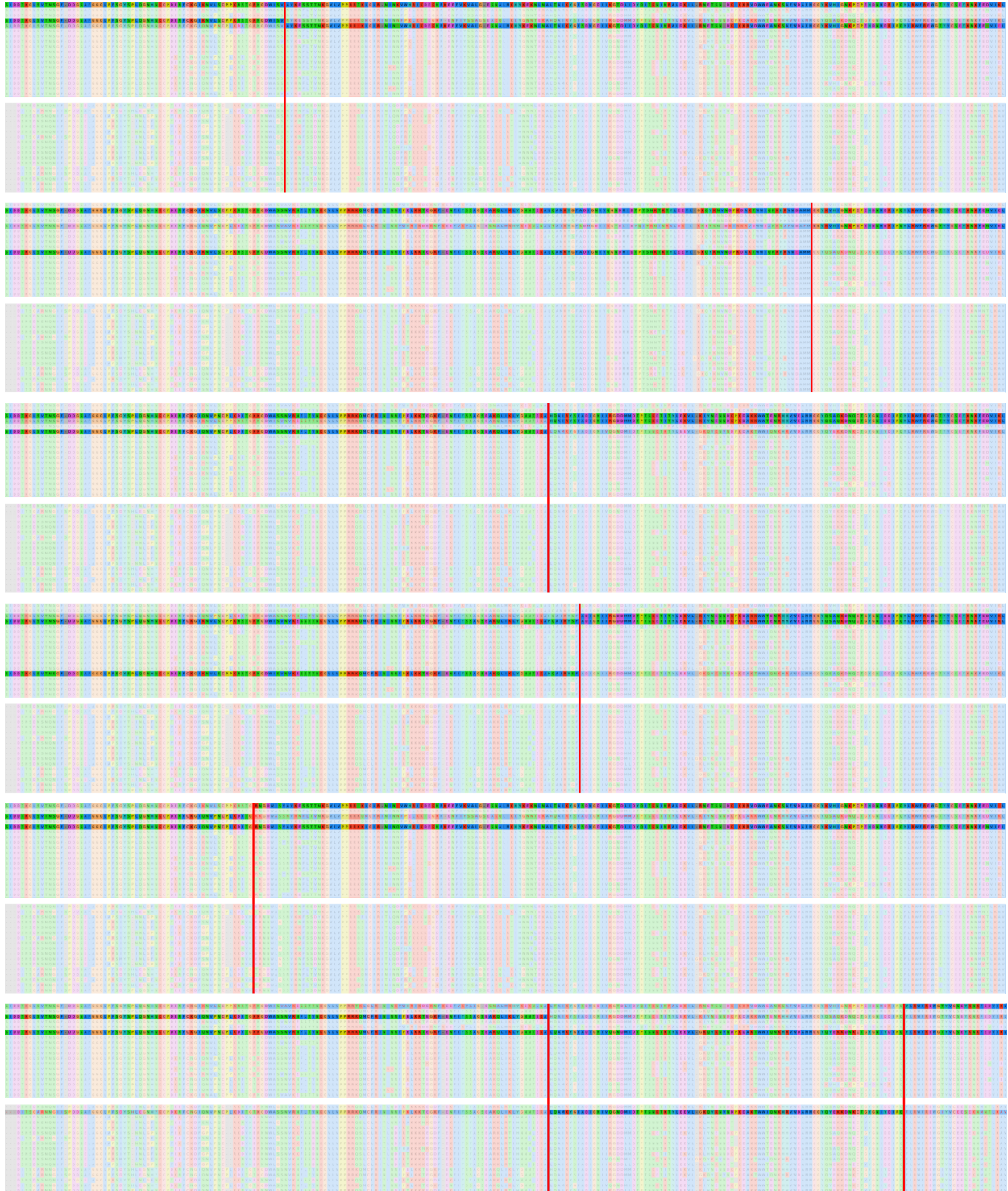


Figure 1: Mosaic alignments for <sup>2</sup> gene DBLMSP in samples 3D7, FP0009-C, FP0030-C, FP0068-C, FP0081-C, PA0074-C.

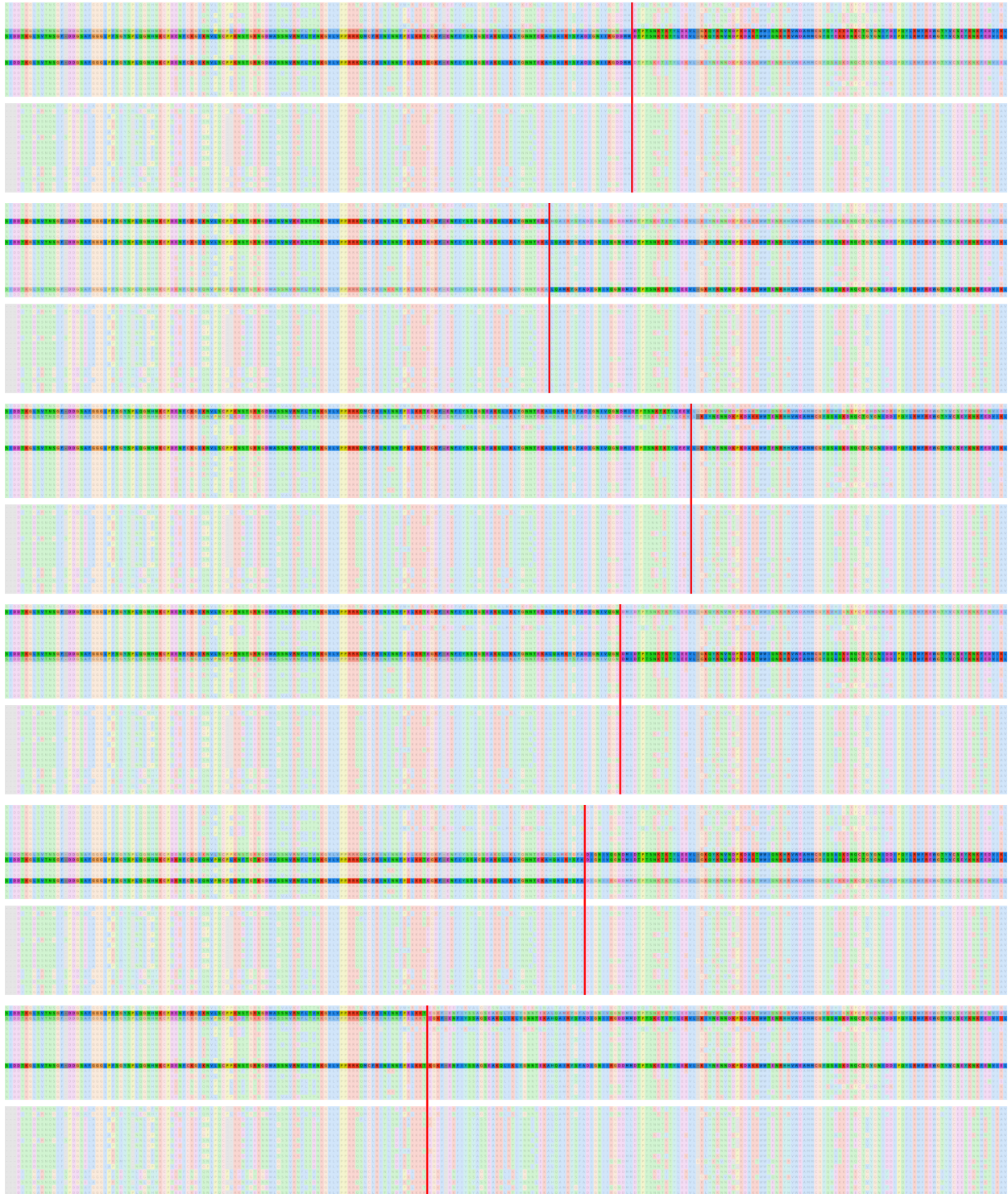


Figure 2: Mosaic alignments for <sup>3</sup>gene DBLMSP in samples PA0232-C, PC0009-C, PD0075-C, PD0791-C, PD0822-C, PE0089-C.

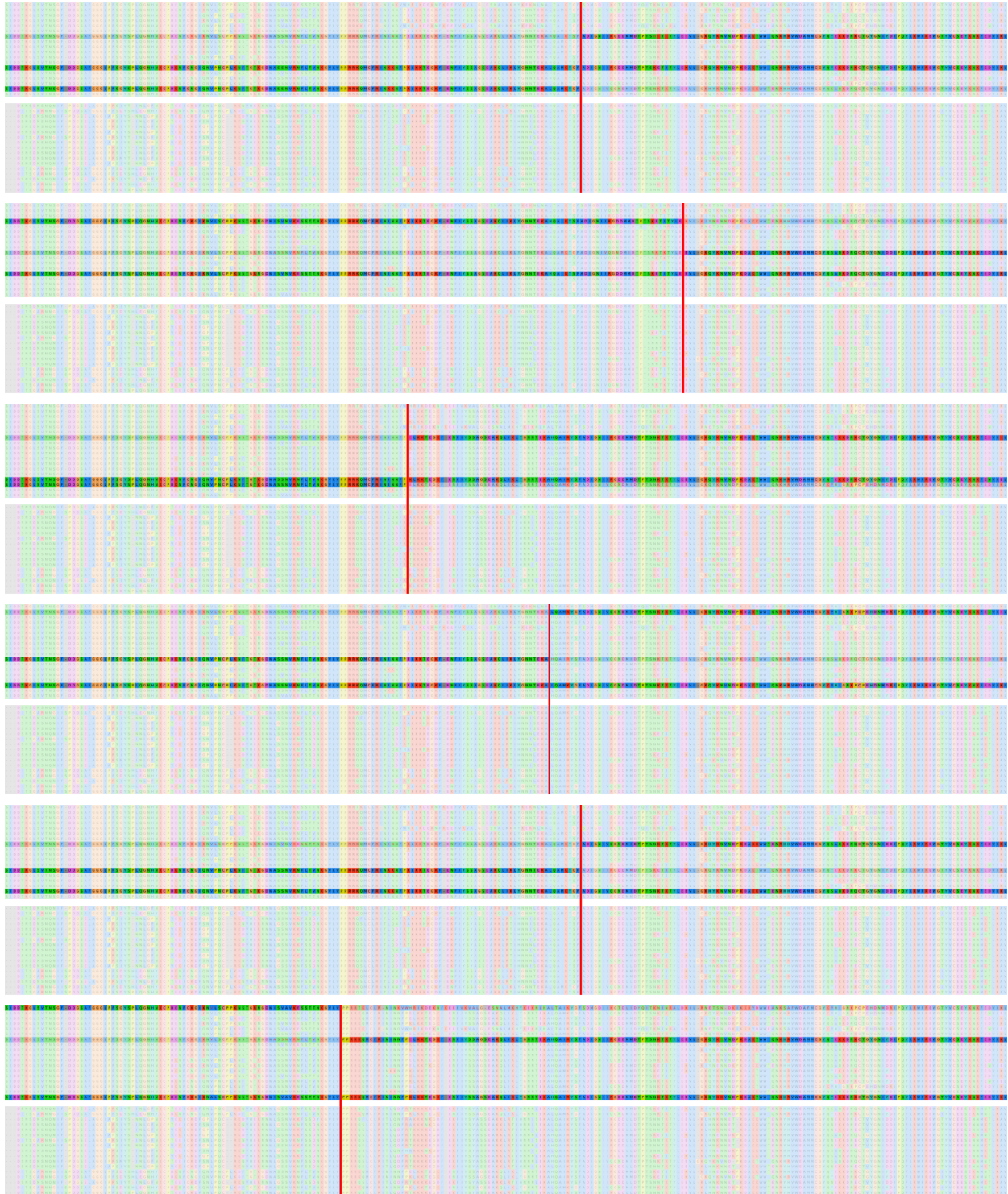


Figure 3: Mosaic alignments for <sup>4</sup>gene DBLMSP in samples PF0098-C, PF0232-C, PF0482-C, PT0007-CW, QP0195-C, QT0006-C.

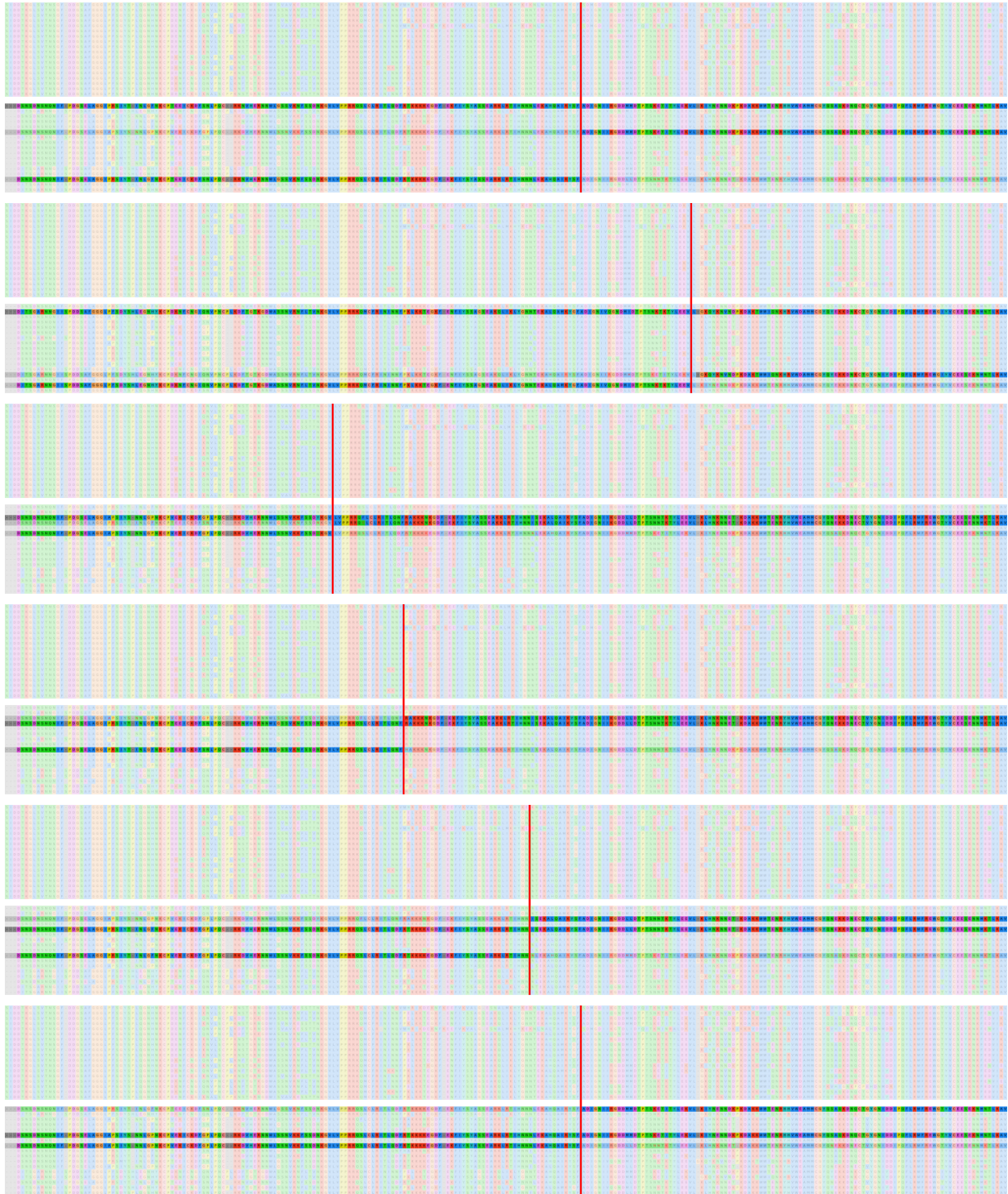


Figure 4: Mosaic alignments for <sup>5</sup>gene DBLMSP2 in samples 3D7, FP0018-C, FP0021-C, FP0028-C, FP0033-C, FP0062-C.

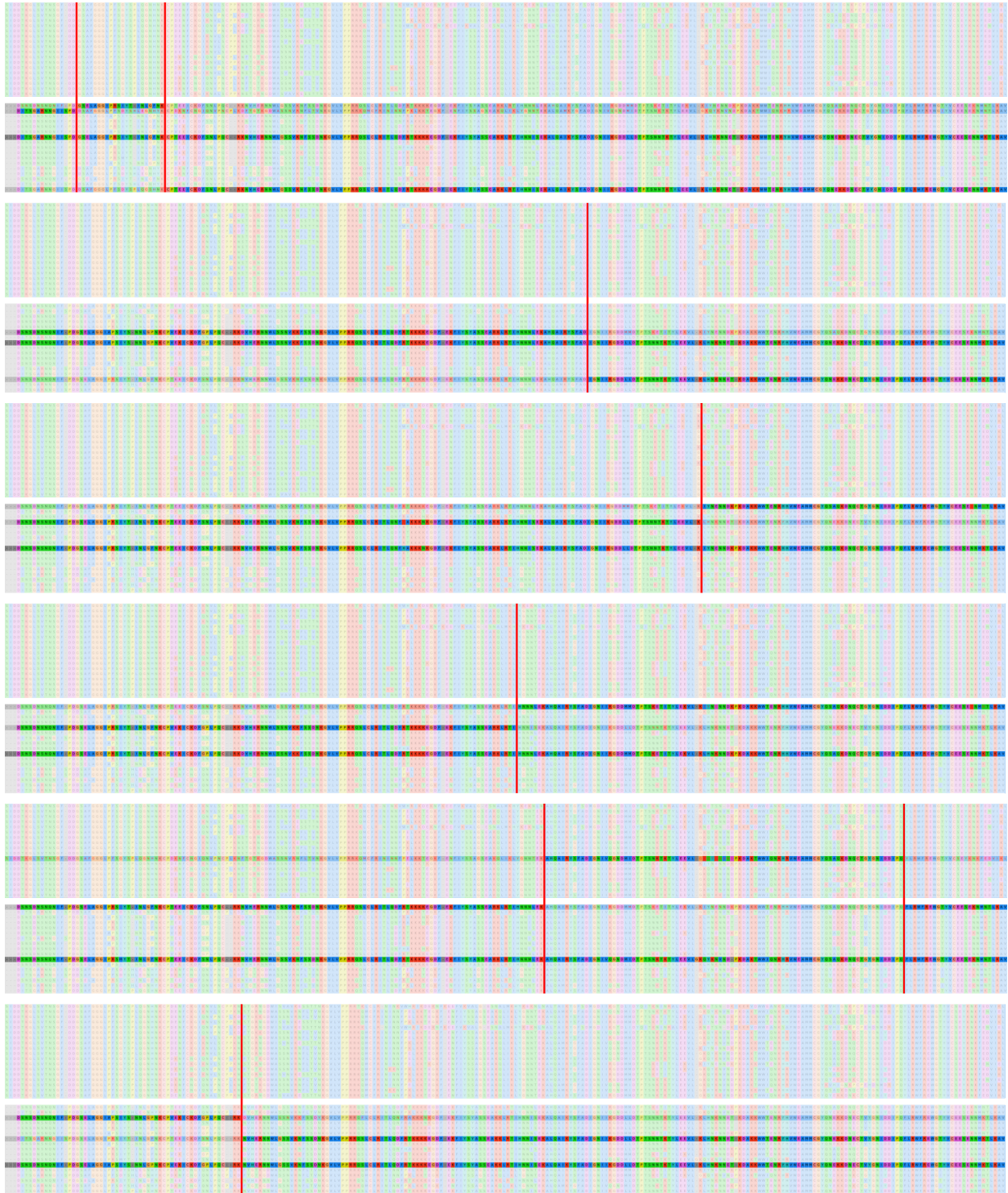


Figure 5: Mosaic alignments for gene<sup>6</sup> DBLMSP2 in samples PA0223-C, PA0254-C, PA0419-C, PC0019-C, PC0197-C, PD0461-C.

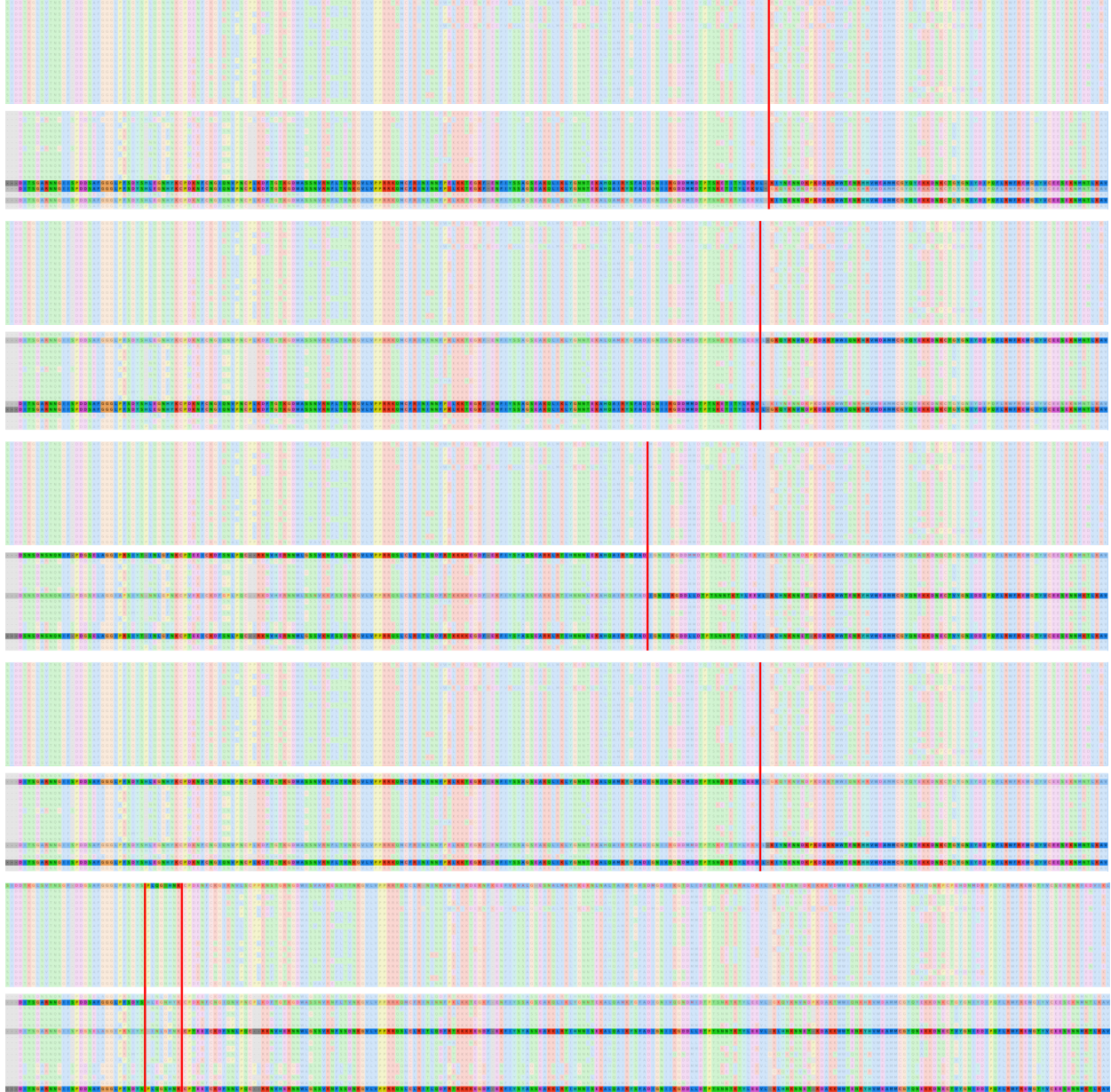


Figure 6: Mosaic alignments for gene DBLMSP2 in samples PD0986-C, PD1082-C, PN0020-C, QE0398-C, QQ0063-C.