

oClifford Odets' Klee collection  
with twelve previously unlisted works

---

Paul Klee  
Landschaft (Milbertshofen), 1910, 121  
Landscape (Milbertshofen)  
pen and brush on paper on cardboard  
22 x 28 cm  
Privatsammlung



Paul Klee  
2 Damen, 1911, 38  
2 Ladies  
pen and brush on paper on cardboard  
12,7 x 10,2 cm  
Albertina, Wien, Sammlung Carl Djerassi



Paul Klee  
Blick auf einen Platz, 1912, 10  
Looking onto a Square  
gouache and chalk on paper on cardboard  
16,5 x 27 cm  
Museo Thyssen-Bornemisza, Madrid

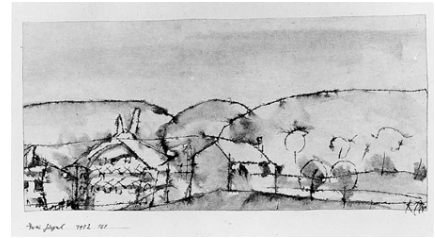


Paul Klee  
Im Villenviertel, 1912, 11  
In the Residential District  
gouache on paper on cardboard  
14,5 x 20,7 cm  
Caroline and Stephen Adler



---

Paul Klee  
Drei Hügel, 1912, 101  
Three Hills  
pen and brush on paper on cardboard  
8,9 x 19 cm  
Privatbesitz



---

Paul Klee  
Gassen Kinder, 1912, 118  
Street Kids  
lithograph on cardboard  
7,3 x 12,1 cm  
Museum of Modern Art, New York



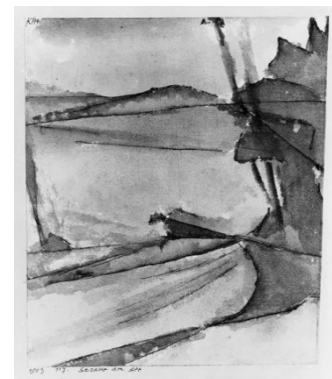
---

Paul Klee  
Kurort, 1913, 7  
Health Resort  
watercolour on paper on cardboard  
10 x 17,5 cm  
Fondazione Antonio Mazzotta, Mailand



---

Paul Klee  
Strasse am See, 1913, 117  
Road by the Lake  
watercolour, pencil, pen and brush on paper on cardboard  
21,5 x 18 cm  
Privatbesitz, USA



---

Paul Klee  
Rote u. weisse Kuppeln, 1914, 45  
Red and White Domes  
watercolour and gouache on paper on cardboard  
14,6 x 13,7 cm  
Kunstsammlung Nordrhein-Westfalen, Düsseldorf



---

Paul Klee  
bunte Menschen  
Colourful People, 1914, 52  
Location unknown



---

Paul Klee  
Strahlenbäume, 1915, 249  
Radiant Trees  
pen and watercolour on paper on cardboard  
14,3 x 11,5 cm  
Location unknown



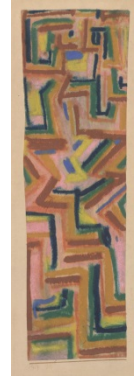
---

Paul Klee  
violett-gelber Schicksalsklang mit den beiden ○○ Kugeln, 1916,  
10  
Violet-Yellow Sound of Fate with the Two ○○ Spheres  
pen and watercolour on paper on cardboard  
17/17,3 x 24,3 cm  
The Miyagi Museum of Art, Sendai



---

Paul Klee  
Teppich, 1917, 70  
Carpet  
pastel and watercolour on paper on cardboard  
24.3 x 7.3 cm  
Albertina, Wien, Sammlung Carl Djerassi



---

Paul Klee  
10. (Zwillingspflanzen), 1917, 134  
10. (Twin Plants)  
pen and watercolour on paper on cardboard  
20 x 18,5 cm  
Privatbesitz, USA



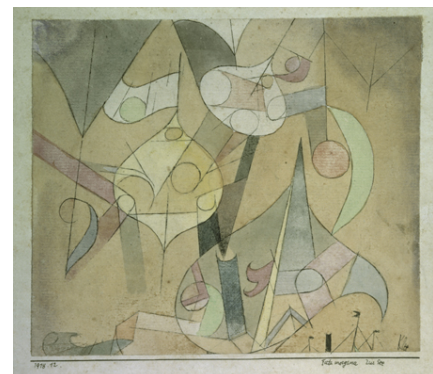
---

Paul Klee  
Fest auf dem Wasser, 1917, 136  
Water Festival  
watercolour and pencil on paper on cardboard  
20,5 x 24,5 cm  
Location unknown



---

Paul Klee  
Fata morgana zur See, 1918, 12  
Fata Morgana at Sea  
watercolour and pen on paper on cardboard  
12,7 x 14,9 cm  
San Francisco Museum of Modern Art, Dauerleihgabe des Carl  
Djerassi Art Trust I



---

Paul Klee  
Barbarische Komposition, 1918, 68  
Barbarian Composition  
watercolour and gouache on paper on cardboard  
18,5 x 11,8/11,4 cm  
Location unknown



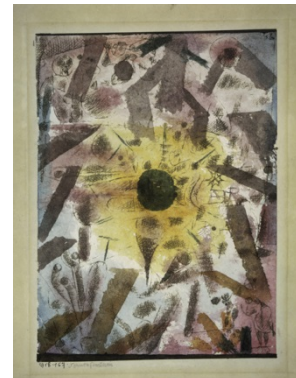
---

Paul Klee  
Blumengärten von Taora, 1918, 77  
Flower Gardens of Taora  
watercolour on primed paper on cardboard  
a) 16 x 11,3 cm b) 15,9 x 13,3 cm  
Allen Memorial Art Museum, Oberlin College, Oberlin



---

Paul Klee  
Sonnenfinsternis, 1918, 157  
Solar Eclipse  
watercolour and pen on paper on cardboard  
19,7 x 14,3 cm  
Location unknown



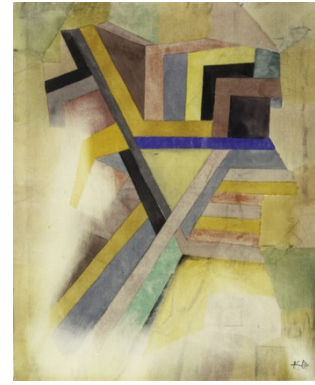
---

Paul Klee  
Bildnis eines Knaben, 1919, 91  
Portrait of A Boy  
oil transfer drawing on paper on cardboard  
24,1 x 19,1 cm  
San Francisco Museum of Modern Art, Dauerleihgabe des Djerassi  
Art Trust



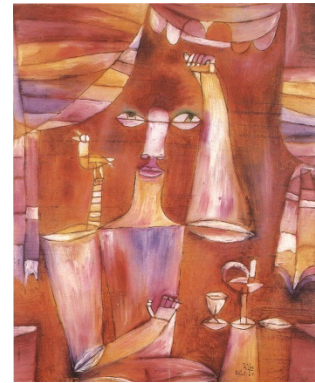
---

Paul Klee  
Felsentempel, 1919, 117  
Rock-Cut Temple  
watercolour and pencil on paper  
29,6 x 23,7 cm  
The Collection of David M. Solinger



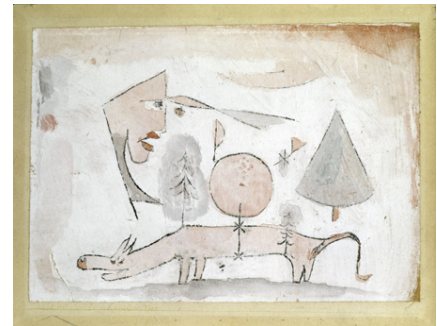
---

Paul Klee  
Der Kanari-magier, 1920, 24  
The Canary-Magician  
oil on cardboard  
50 x 40 cm  
Galerie A. F. Petit, Paris



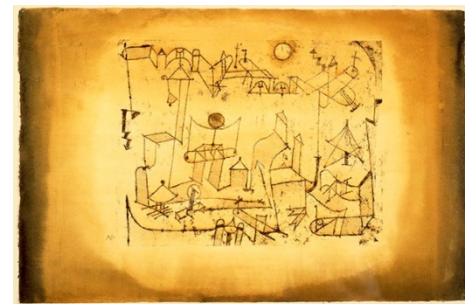
---

Paul Klee  
Das schamlose Tier, 1920, 115  
The Shameless Beast  
oil transfer drawing and watercolour on primed paper on cardboard  
18,3 x 26 cm  
Kunstsammlung Nordrhein-Westfalen, Düsseldorf



---

Paul Klee  
Stadt im Zwischenreich, 1921, 25  
City in the Intermediate Realm  
oil transfer drawing and watercolour on paper on cardboard  
31,3 x 48 cm  
Columbus Museum of Art, Sirak Collection



---

Paul Klee  
Hängende Früchte, 1921, 70  
Hanging Fruits  
watercolour and pencil on paper on cardboard  
24,8 x 15,2 cm  
The Metropolitan Museum of Art, New York, The Berggruen Klee  
Collection



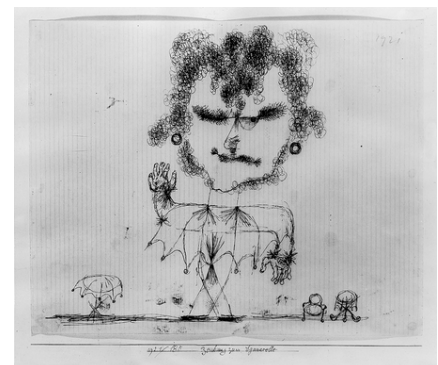
---

Paul Klee  
weibliche und männliche Pflanze, 1921, 76  
Female and Male Plant  
oil transfer drawing and watercolour on paper on cardboard  
22,3 x 17,2 cm  
Location unknown



---

Paul Klee  
Zeichnung zum Sganarelle, 1921, 185  
Drawing for Sganarelle  
pen on paper on cardboard  
25 x 30,5 cm  
Location unknown



---

Paul Klee  
Tanz des trauernden Kindes, 1922, 11  
Dance of the Grieving Child  
oil transfer drawing, watercolour and ink on paper on cardboard  
29,2 x 27,3 cm  
Privatbesitz, USA



---

Paul Klee  
Sganarelle, 1922, 25  
Sganarelle  
oil transfer drawing and watercolour on paper  
46 x 39 cm  
Kunstsammlung Nordrhein-Westfalen, Düsseldorf



---

Paul Klee  
Kater, 1923, 30  
Tomcat  
watercolour and paste on paper on cardboard  
24,2 x 31,8 cm  
Location unknown



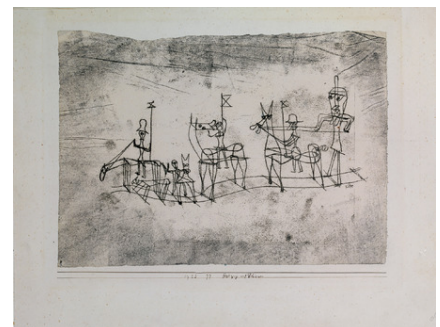
---

Paul Klee  
Litho nach 15/114, 1923, 74  
hand colored  
24.5 x 17 cm  
Centre Pompidou, Paris, Musée national d'art moderne / Centre de création industrielle, Schenkung Heinz Berggruen, 1972



---

Paul Klee  
Festzug auf Schienen, 1923, 77  
Procession on Rails  
oil transfer drawing on paper on cardboard  
22,8 x 31,6 cm  
The Museum of Modern Art, Toyama





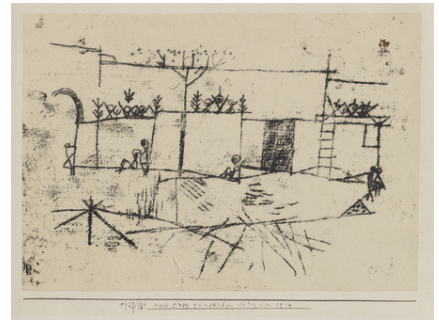
---

Paul Klee  
Löwen, man beachte sie!, 1923, 155  
Lions, Attention Please!  
oil transfer drawing, pencil and watercolour on paper on cardboard  
30,5 x 48,5 cm  
Kunstsammlung Nordrhein-Westfalen, Düsseldorf



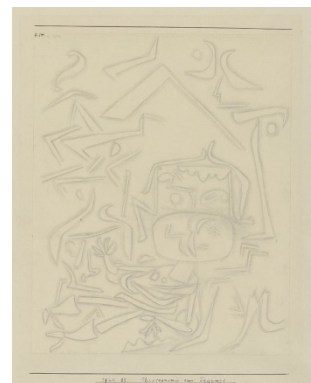
---

Paul Klee  
nach einer tunesischen Notiz von 1914, 1923, 181  
After a Tunisian Note of 1914  
oil transfer drawing on paper on cardboard  
15,2 x 21,6 cm  
Privatsammlung, Courtesy Galerie Pangée



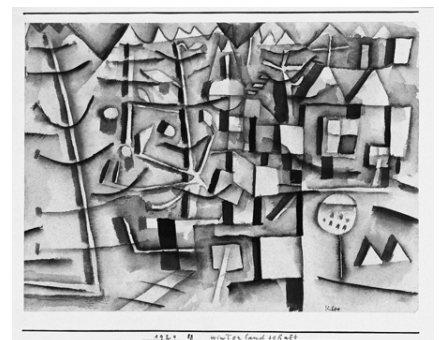
---

Paul Klee  
Physiognomie eines Traumes, 1924, 83  
Physiognomy of a Dream  
pencil on paper on cardboard  
28 x 23 cm  
The Museum of Modern Art, New York, Schenkung Mr. und Mrs.  
Daniel Saidenberg



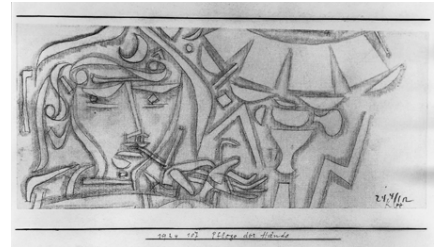
---

Paul Klee  
Winterlandschaft, 1924, 88  
Winter Landscape  
watercolour on paper on cardboard  
14,5 x 20 cm  
Privatbesitz, USA



---

Paul Klee  
Pflege der Hände, 1924, 107  
Manicure  
pencil on paper on cardboard  
10 x 22,5 cm  
Galerie Tamenaga, Tokyo



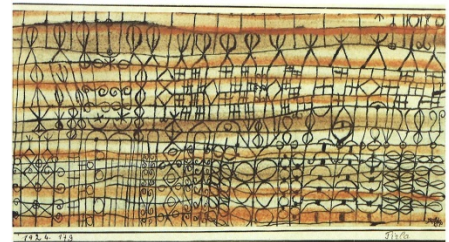
---

Paul Klee  
Vorhang, 1924, 129.a  
Curtain  
watercolour and tempera on primed muslin on cardboard  
9,1 x 23,5 cm  
Privatbesitz, Frankreich



---

Paul Klee  
Pirla, 1924, 179  
Pirla  
pen, watercolour and pencil on paper on cardboard  
10,2 x 22,6 cm  
Kode-Art Museums of Bergen, Stenersen Collection



---

Paul Klee  
Löwengruppe <zu beachten!>, 1924, 193  
Group of Lions <Attention Please!>  
pen and watercolour on paper on cardboard  
21 x 38,1 cm  
The Metropolitan Museum of Art, New York, The Berggruen Klee  
Collection



---

Paul Klee  
Mazzaró, 1924, 218  
Mazzaró  
watercolour on primed paper on cardboard  
23,3 x 30,5 cm  
San Francisco Museum of Modern Art, Dauerleihgabe des Carl  
Djerassi Art Trust I



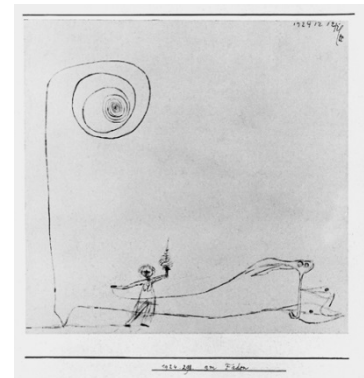
---

Paul Klee  
die Bucht von Mazzaró, 1924, 246  
The Bay of Mazzaró  
watercolour on primed paper on cardboard  
29,2 x 43,7 cm  
Privatbesitz, Schweiz



---

Paul Klee  
am Faden, 1924, 298  
On the Thread  
pen on paper on cardboard  
15 x 15 cm  
Location unknown



---

Paul Klee  
Hexenmutter, 1925, 21  
Mother Witch  
brush on paper on cardboard  
23,5 x 14 cm  
Albertina, Wien, Sammlung Carl Djerassi



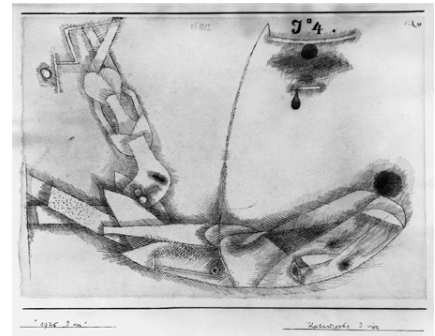
---

Paul Klee  
Abend in Bol, 1925, 180  
Evening in Bol  
watercolour and pencil on paper on cardboard  
25,8 x 24,5 cm  
Location unknown



---

Paul Klee  
Katastrophe J vier, 1925, 184  
Catastrophe J Four  
pen on paper on cardboard  
15,9 x 23,5 cm  
Privatbesitz, USA



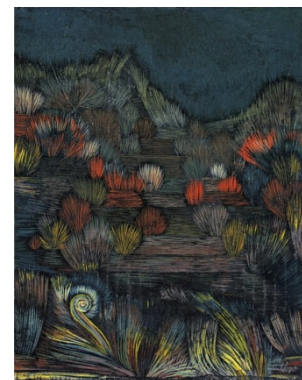
---

Paul Klee  
neues Centrum, 1926, 111  
New Centre  
pen on paper on cardboard  
21 x 16,5 cm  
Location unknown



---

Paul Klee  
kl. Dünenbild, 1926, 115  
Small Dune Picture  
oil on primed cardboard; original frame  
32,4 x 23,2 cm  
The Menil Collection, Houston



---

Paul Klee  
Sommer-Residenz, 1926, 152  
Summer Residence  
watercolour on paper on cardboard  
37,2 x 25,7 cm  
Location unknown



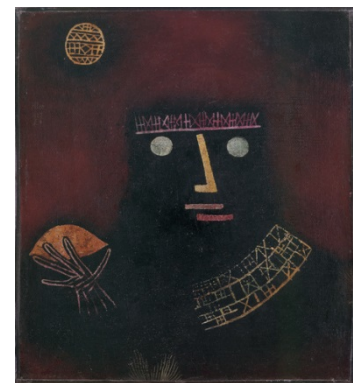
---

Paul Klee  
Garten in POT, 1926, 222  
Garden in Pot  
oil on cardboard; original frame  
36 x 51 cm  
Privatbesitz, Schweiz



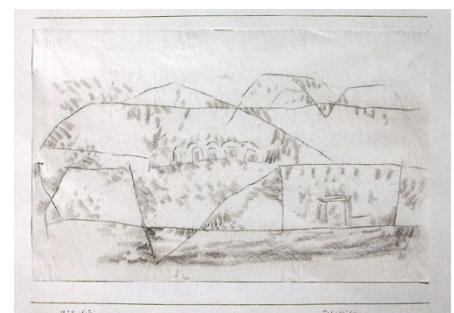
---

Paul Klee  
schwarzer Fürst, 1927, 24  
Black Prince  
oil and tempera on primed canvas; original frame  
33 x 29 cm  
Kunstsammlung Nordrhein-Westfalen, Düsseldorf



---

Paul Klee  
Felsgräber, 1929, 12  
Rock-Cut Tombs  
chalk on paper on cardboard  
21 x 33 cm  
Privatbesitz, Deutschland



---

Paul Klee  
Vogelfänger, 1930, 47  
Bird Catcher  
coloured paste and gouache on paper on cardboard  
33,3 x 21 cm  
Location unknown



---

Paul Klee  
Nekropolis, 1930, 57  
Necropolis  
coloured paste on primed paper on cardboard  
50,4 x 35,3 cm  
Kunstsammlung Nordrhein-Westfalen, Düsseldorf



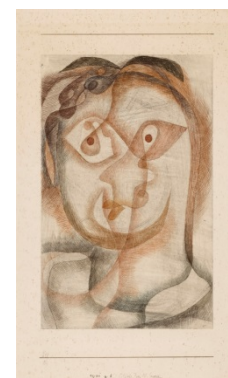
---

Paul Klee  
physiognomisch-"streng", 1930, 175  
Physiognomic-"Severe"  
brush on paper on cardboard  
31,4 x 26,6 cm  
Location unknown



---

Paul Klee  
bildnis Frau Bl. (praecis), 1931, 108  
Portrait of Mrs. Bl. (Precise)  
watercolour and pencil on paper on cardboard  
33,6 x 21 cm  
Art Institute of Chicago, Nachlass Clare Hoover Trust



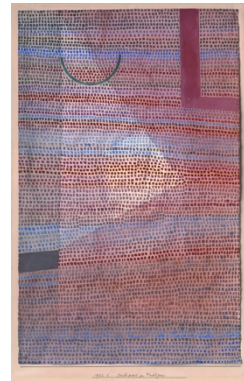
---

Paul Klee  
kl. Gartenecke, 1931, 252  
Small Garden Corner  
oil and wax paint on paper on cardboard  
16,5 x 14 cm  
Location unknown



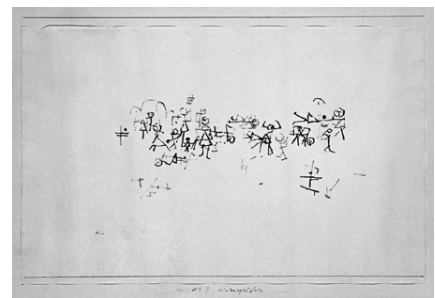
---

Paul Klee  
Halbkreis zu Winkligem, 1932, 5  
Semi-Circle with Angular Features  
watercolour and gouache on paper on cardboard  
48 x 30 cm  
Kunstsammlung Nordrhein-Westfalen, Düsseldorf



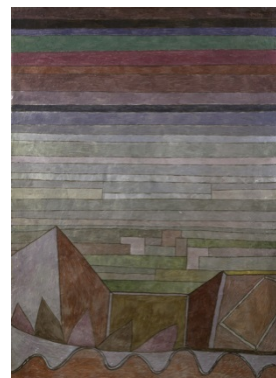
---

Paul Klee  
Kinderspielplatz, 1932, 97  
Children's Playground  
pen on paper on cardboard  
30,5 x 48,5 cm  
Privatsammlung, Schweiz



---

Paul Klee  
Blick in das Fruchmland, 1932, 189  
View into the Fertile Country  
oil on cardboard  
48,7 x 34,7 cm  
Städel Museum, Frankfurt am Main



---

Paul Klee  
panisch-süsser Morgen, 1934, 11  
Pandean-Sweet Morning  
coloured paste and watercolour on paper on cardboard  
31 x 49 cm  
Privatbesitz, USA



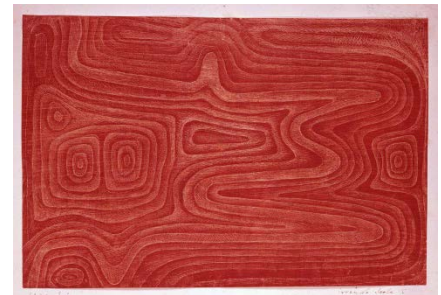
---

Paul Klee  
Erwartender, 1934, 150  
Expectant Man  
Location unknown



---

Paul Klee  
irrende Seele I, 1934, 162  
Wandering Soul I  
scratched drawing in wax on paper on cardboard  
18 x 26 cm  
The Hugh Lane Municipal Gallery of Modern Art, Dublin,  
Vermächtnis Charles Bewley



---

Paul Klee  
harte Pflanzen, 1934, 212  
Hard Plants  
oil and watercolour on cardboard  
41,2 x 55,2 cm  
The Minneapolis Institute of Arts, Schenkung Mr. und Mrs. Donald  
Winston





---

Paul Klee  
Park anlage, 1937, 47  
Park Grounds  
charcoal and paste on primed cardboard  
21 x 13,5 cm  
Location unknown



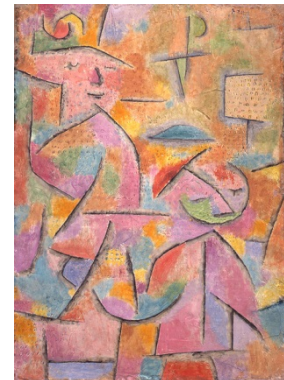
---

Paul Klee  
unter dem Via duct, 1937, 77  
Beneath the Viaduct  
charcoal on cotton on cardboard  
52 x 30,5 cm  
Privatbesitz, Deutschland



---

Paul Klee  
Kind und Tante, 1937, 149  
Child and Aunt  
oil on primed burlap  
72,3 x 52,7 cm  
Tokushima Modern Art Museum



---

Paul Klee  
zwei Bäume, 1937, 251  
Two Trees  
tempera on paper on cardboard  
24,8 x 30,5 cm  
The University of Michigan Museum of Art, Ann Arbor, Schenkung  
Mr. und Mrs. Harry L. Winston



---

Paul Klee  
ausserdem ein Männchen, 1938, 7  
Besides a Little Man  
coloured paste on paper on cardboard  
32,3 x 49,5 cm  
Landau Fine Art, Montreal



---

Paul Klee  
der Boulevard der Abnormen, 1938, 46  
The Boulevard of the Abnormal Ones  
coloured paste on paper on cardboard  
33,2 x 49 cm  
Kunstsammlung Nordrhein-Westfalen, Düsseldorf



---

Paul Klee  
Milderung, 1938, 201  
Softening  
watercolour on primed burlap  
58,4 x 38,1 cm  
Privatbesitz



---

Paul Klee  
ein Weib für Götter, 1938, 452  
A Woman for Gods  
A Bride for the Gods  
coloured paste and watercolour on paper on cardboard  
44,3 x 60,5 cm  
Fondation Beyeler, Riehen/Basel, Sammlung Beyeler



---

Paul Klee  
botanischer Garten (Abteilung exotische Bäume), 1939, 100  
Botanical Garden (Exotic Tree Section)  
coloured paste and watercolour on paper on cardboard  
14,1 x 21 cm  
Privatbesitz, Schweiz



---

Paul Klee  
Gedanken über "unwiederbringlich", 1939, 135  
Thoughts About "Lost for Ever"  
watercolour on primed burlap  
42 x 30,5 cm  
Privatbesitz, Schweiz



---

Paul Klee  
diese Blüte will verwelken, 1939, 1180  
This Bloom is About to Wither  
pencil, chalk and watercolour on paper on cardboard  
29 x 20,5 cm  
The Barnes Foundation, Philadelphia

