

Clifford Odets' Klee collection
with twelve previously unlisted works

Paul Klee
Landschaft (Milbertshofen), 1910, 121
Landscape (Milbertshofen)
pen and brush on paper on cardboard
22 x 28 cm
Privatsammlung



Paul Klee
2 Damen, 1911, 38
2 Ladies
pen and brush on paper on cardboard
12,7 x 10,2 cm
Albertina, Wien, Sammlung Carl Djerassi



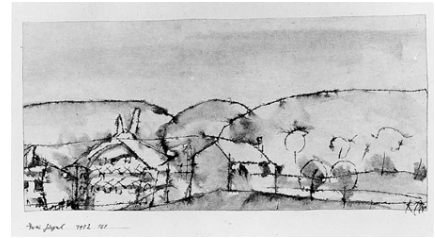
Paul Klee
Blick auf einen Platz, 1912, 10
Looking onto a Square
gouache and chalk on paper on cardboard
16,5 x 27 cm
Museo Thyssen-Bornemisza, Madrid



Paul Klee
Im Villenviertel, 1912, 11
In the Residential District
gouache on paper on cardboard
14,5 x 20,7 cm
Caroline and Stephen Adler



Paul Klee
Drei Hügel, 1912, 101
Three Hills
pen and brush on paper on cardboard
8,9 x 19 cm
Privatbesitz



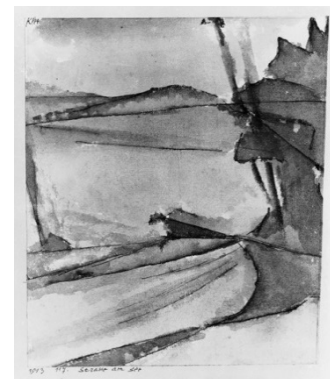
Paul Klee
Gassen Kinder, 1912, 118
Street Kids
lithograph on cardboard
7,3 x 12,1 cm
Museum of Modern Art, New York



Paul Klee
Kurort, 1913, 7
Health Resort
watercolour on paper on cardboard
10 x 17,5 cm
Fondazione Antonio Mazzotta, Mailand



Paul Klee
Strasse am See, 1913, 117
Road by the Lake
watercolour, pencil, pen and brush on paper on cardboard
21,5 x 18 cm
Privatbesitz, USA



Paul Klee
Rote u. weisse Kuppeln, 1914, 45
Red and White Domes
watercolour and gouache on paper on cardboard
14,6 x 13,7 cm
Kunstsammlung Nordrhein-Westfalen, Düsseldorf



Paul Klee
bunte Mänschen
Colourful People, 1914, 52
Location unknown



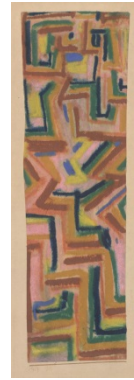
Paul Klee
Strahlenbäume, 1915, 249
Radiant Trees
pen and watercolour on paper on cardboard
14,3 x 11,5 cm
Location unknown



Paul Klee
violett-gelber Schicksalsklang mit den beiden \$ Kugeln, 1916, 10
Violet-Yellow Sound of Fate with the Two Spheres
pen and watercolour on paper on cardboard
17/17,3 x 24,3 cm
The Miyagi Museum of Art, Sendai



Paul Klee
Teppich, 1917, 70
Carpet
pastel and watercolour on paper on cardboard
24.3 x 7.3 cm
Albertina, Wien, Sammlung Carl Djerassi



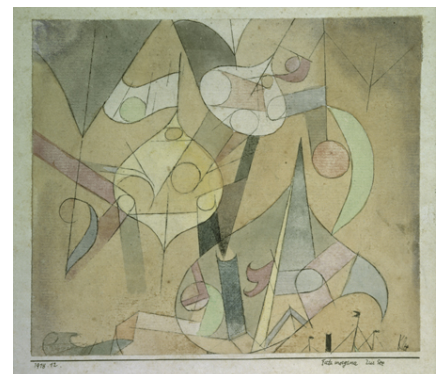
Paul Klee
10. (Zwillingspflanzen), 1917, 134
10. (Twin Plants)
pen and watercolour on paper on cardboard
20 x 18,5 cm
Privatbesitz, USA



Paul Klee
Fest auf dem Wasser, 1917, 136
Water Festival
watercolour and pencil on paper on cardboard
20,5 x 24,5 cm
Location unknown



Paul Klee
Fata morgana zur See, 1918, 12
Fata Morgana at Sea
watercolour and pen on paper on cardboard
12,7 x 14,9 cm
San Francisco Museum of Modern Art, Dauerleihgabe des Carl
Djerassi Art Trust I



Paul Klee
Barbarische Komposition, 1918, 68
Barbarian Composition
watercolour and gouache on paper on cardboard
18,5 x 11,8/11,4 cm
Location unknown



Paul Klee
Blumengärten von Taora, 1918, 77
Flower Gardens of Taora
watercolour on primed paper on cardboard
a) 16 x 11,3 cm b) 15,9 x 13,3 cm
Allen Memorial Art Museum, Oberlin College, Oberlin



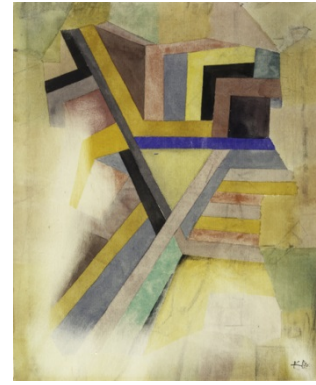
Paul Klee
Sonnenfinsternis, 1918, 157
Solar Eclipse
watercolour and pen on paper on cardboard
19,7 x 14,3 cm
Location unknown



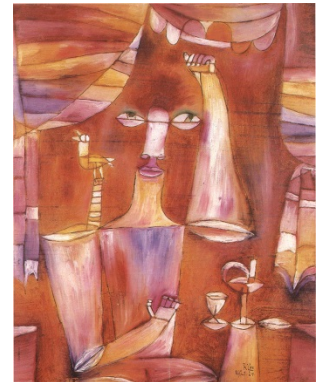
Paul Klee
Bildnis eines Knaben, 1919, 91
Portrait of A Boy
oil transfer drawing on paper on cardboard
24,1 x 19,1 cm
San Francisco Museum of Modern Art, Dauerleihgabe des Djerassi
Art Trust



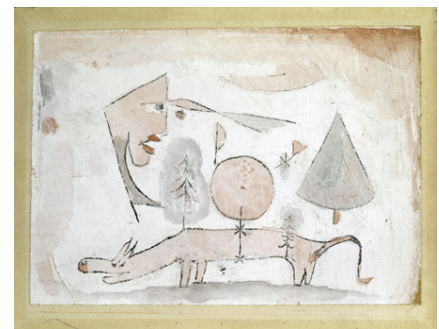
Paul Klee
Felsentempel, 1919, 117
Rock-Cut Temple
watercolour and pencil on paper
29,6 x 23,7 cm
The Collection of David M. Solinger



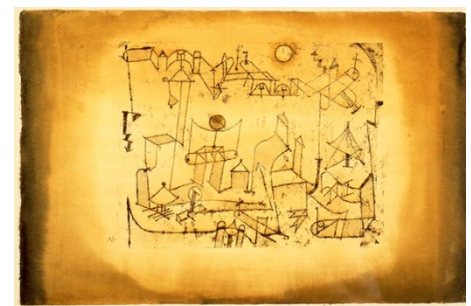
Paul Klee
Der Kanari-magier, 1920, 24
The Canary-Magician
oil on cardboard
50 x 40 cm
Galerie A. F. Petit, Paris



Paul Klee
Das schamlose Tier, 1920, 115
The Shameless Beast
oil transfer drawing and watercolour on primed paper on cardboard
18,3 x 26 cm
Kunstsammlung Nordrhein-Westfalen, Düsseldorf



Paul Klee
Stadt im Zwischenreich, 1921, 25
City in the Intermediate Realm
oil transfer drawing and watercolour on paper on cardboard
31,3 x 48 cm
Columbus Museum of Art, Sirak Collection



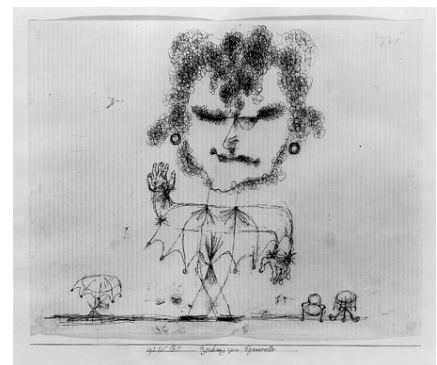
Paul Klee
Hängende Früchte, 1921, 70
Hanging Fruits
watercolour and pencil on paper on cardboard
24,8 x 15,2 cm
The Metropolitan Museum of Art, New York, The Berggruen Klee
Collection



Paul Klee
weibliche und männliche Pflanze, 1921, 76
Female and Male Plant
oil transfer drawing and watercolour on paper on cardboard
22,3 x 17,2 cm
Location unknown



Paul Klee
Zeichnung zum Sganarelle, 1921, 185
Drawing for Sganarelle
pen on paper on cardboard
25 x 30,5 cm
Location unknown



Paul Klee
Tanz des trauernden Kindes, 1922, 11
Dance of the Grieving Child
oil transfer drawing, watercolour and ink on paper on cardboard
29,2 x 27,3 cm
Privatbesitz, USA



Paul Klee
Sganarelle, 1922, 25
Sganarelle
oil transfer drawing and watercolour on paper
46 x 39 cm
Kunstsammlung Nordrhein-Westfalen, Düsseldorf



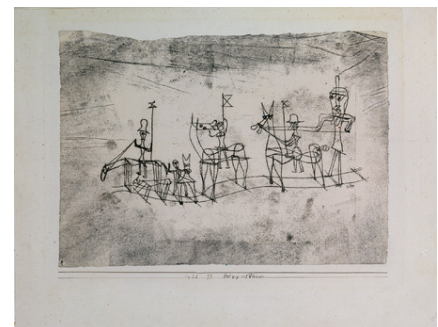
Paul Klee
Kater, 1923, 30
Tomcat
watercolour and paste on paper on cardboard
24,2 x 31,8 cm
Location unknown



Paul Klee
Litho nach 15/114, 1923, 74
hand colored
24.5 x 17 cm
Centre Pompidou, Paris, Musée national d'art moderne / Centre de
création industrielle, Schenkung Heinz Berggruen, 1972



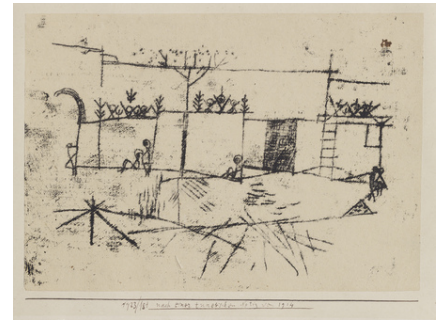
Paul Klee
Festzug auf Schienen, 1923, 77
Procession on Rails
oil transfer drawing on paper on cardboard
22,8 x 31,6 cm
The Museum of Modern Art, Toyama



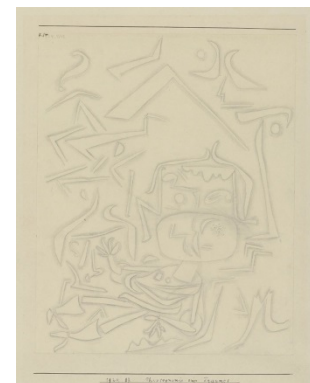
Paul Klee
Löwen, man beachte sie!, 1923, 155
Lions, Attention Please!
oil transfer drawing, pencil and watercolour on paper on cardboard
30,5 x 48,5 cm
Kunstsammlung Nordrhein-Westfalen, Düsseldorf



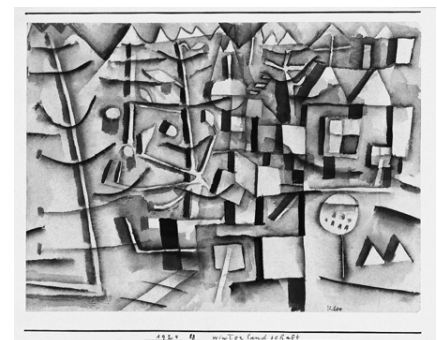
Paul Klee
nach einer tunesischen Notiz von 1914, 1923, 181
After a Tunisian Note of 1914
oil transfer drawing on paper on cardboard
15,2 x 21,6 cm
Privatsammlung, Courtesy Galerie Pangée



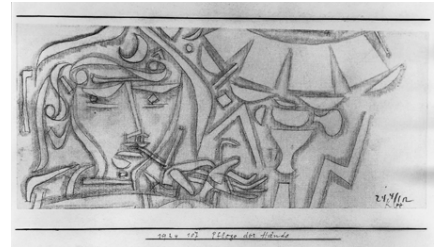
Paul Klee
Physiognomie eines Traumes, 1924, 83
Physiognomy of a Dream
pencil on paper on cardboard
28 x 23 cm
The Museum of Modern Art, New York, Schenkung Mr. und Mrs.
Daniel Saidenberg



Paul Klee
Winterlandschaft, 1924, 88
Winter Landscape
watercolour on paper on cardboard
14,5 x 20 cm
Privatbesitz, USA



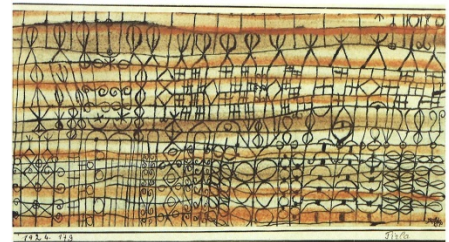
Paul Klee
Pflege der Hände, 1924, 107
Manicure
pencil on paper on cardboard
10 x 22,5 cm
Galerie Tamenaga, Tokyo



Paul Klee
Vorhang, 1924, 129.a
Curtain
watercolour and tempera on primed muslin on cardboard
9,1 x 23,5 cm
Privatbesitz, Frankreich



Paul Klee
Pirla, 1924, 179
Pirla
pen, watercolour and pencil on paper on cardboard
10,2 x 22,6 cm
Kode-Art Museums of Bergen, Stenersen Collection



Paul Klee
Löwengruppe <zu beachten!>, 1924, 193
Group of Lions <Attention Please!>
pen and watercolour on paper on cardboard
21 x 38,1 cm
The Metropolitan Museum of Art, New York, The Berggruen Klee
Collection



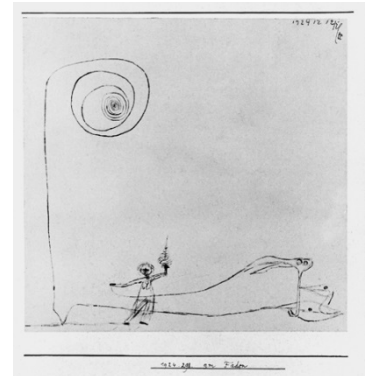
Paul Klee
Mazzaró, 1924, 218
Mazzaró
watercolour on primed paper on cardboard
23,3 x 30,5 cm
San Francisco Museum of Modern Art, Dauerleihgabe des Carl
Djerassi Art Trust I



Paul Klee
die Bucht von Mazzaró, 1924, 246
The Bay of Mazzaró
watercolour on primed paper on cardboard
29,2 x 43,7 cm
Privatbesitz, Schweiz



Paul Klee
am Faden, 1924, 298
On the Thread
pen on paper on cardboard
15 x 15 cm
Location unknown



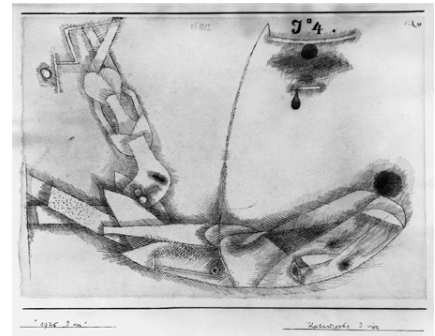
Paul Klee
Hexenmutter, 1925, 21
Mother Witch
brush on paper on cardboard
23,5 x 14 cm
Albertina, Wien, Sammlung Carl Djerassi



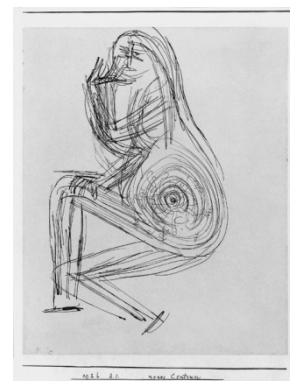
Paul Klee
Abend in Bol, 1925, 180
Evening in Bol
watercolour and pencil on paper on cardboard
25,8 x 24,5 cm
Location unknown



Paul Klee
Katastrophe J vier, 1925, 184
Catastrophe J Four
pen on paper on cardboard
15,9 x 23,5 cm
Privatbesitz, USA



Paul Klee
neues Centrum, 1926, 111
New Centre
pen on paper on cardboard
21 x 16,5 cm
Location unknown



Paul Klee
kl. Dünenbild, 1926, 115
Small Dune Picture
oil on primed cardboard; original frame
32,4 x 23,2 cm
The Menil Collection, Houston



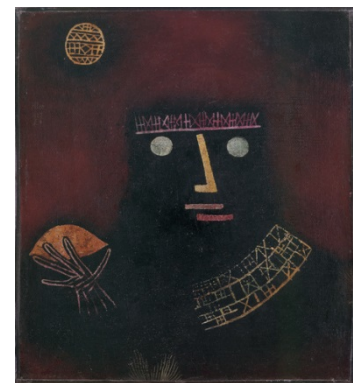
Paul Klee
Sommer-Residenz, 1926, 152
Summer Residence
watercolour on paper on cardboard
37,2 x 25,7 cm
Location unknown



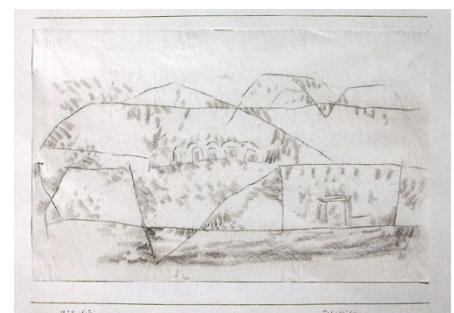
Paul Klee
Garten in POT, 1926, 222
Garden in Pot
oil on cardboard; original frame
36 x 51 cm
Privatbesitz, Schweiz



Paul Klee
schwarzer Fürst, 1927, 24
Black Prince
oil and tempera on primed canvas; original frame
33 x 29 cm
Kunstsammlung Nordrhein-Westfalen, Düsseldorf



Paul Klee
Felsgräber, 1929, 12
Rock-Cut Tombs
chalk on paper on cardboard
21 x 33 cm
Privatbesitz, Deutschland



Paul Klee
Vogelfänger, 1930, 47
Bird Catcher
coloured paste and gouache on paper on cardboard
33,3 x 21 cm
Location unknown



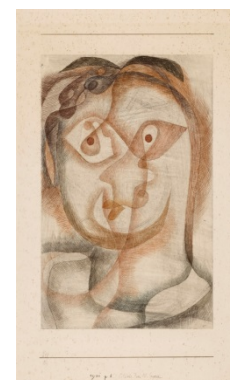
Paul Klee
Nekropolis, 1930, 57
Necropolis
coloured paste on primed paper on cardboard
50,4 x 35,3 cm
Kunstsammlung Nordrhein-Westfalen, Düsseldorf



Paul Klee
physiognomisch-"streng", 1930, 175
Physiognomic-"Severe"
brush on paper on cardboard
31,4 x 26,6 cm
Location unknown



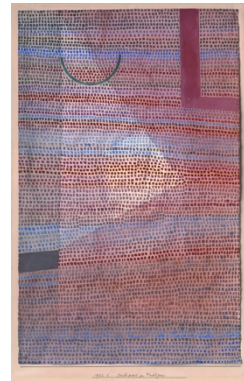
Paul Klee
bildnis Frau Bl. (praecis), 1931, 108
Portrait of Mrs. Bl. (Precise)
watercolour and pencil on paper on cardboard
33,6 x 21 cm
Art Institute of Chicago, Nachlass Clare Hoover Trust



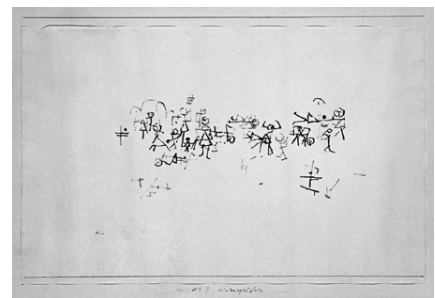
Paul Klee
kl. Gartenecke, 1931, 252
Small Garden Corner
oil and wax paint on paper on cardboard
16,5 x 14 cm
Location unknown



Paul Klee
Halbkreis zu Winkligem, 1932, 5
Semi-Circle with Angular Features
watercolour and gouache on paper on cardboard
48 x 30 cm
Kunstsammlung Nordrhein-Westfalen, Düsseldorf



Paul Klee
Kinderspielplatz, 1932, 97
Children's Playground
pen on paper on cardboard
30,5 x 48,5 cm
Privatsammlung, Schweiz



Paul Klee
Blick in das Fruchmland, 1932, 189
View into the Fertile Country
oil on cardboard
48,7 x 34,7 cm
Städel Museum, Frankfurt am Main



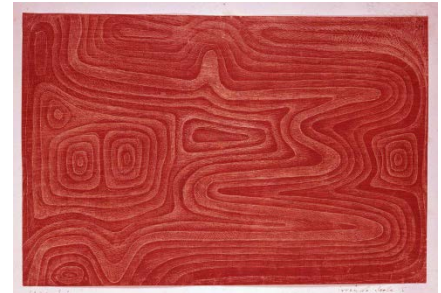
Paul Klee
panisch-süsser Morgen, 1934, 11
Pandean-Sweet Morning
coloured paste and watercolour on paper on cardboard
31 x 49 cm
Privatbesitz, USA



Paul Klee
Erwartender, 1934, 150
Expectant Man
Location unknown



Paul Klee
irrende Seele I, 1934, 162
Wandering Soul I
scratched drawing in wax on paper on cardboard
18 x 26 cm
The Hugh Lane Municipal Gallery of Modern Art, Dublin,
Vermächtnis Charles Bewley



Paul Klee
harte Pflanzen, 1934, 212
Hard Plants
oil and watercolour on cardboard
41,2 x 55,2 cm
The Minneapolis Institute of Arts, Schenkung Mr. und Mrs. Donald
Winston



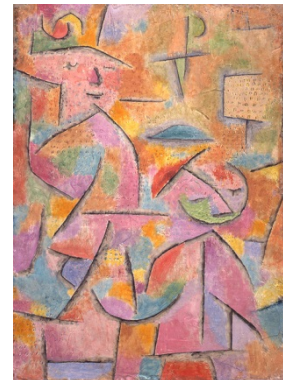
Paul Klee
Park anlage, 1937, 47
Park Grounds
charcoal and paste on primed cardboard
21 x 13,5 cm
Location unknown



Paul Klee
unter dem Via duct, 1937, 77
Beneath the Viaduct
charcoal on cotton on cardboard
52 x 30,5 cm
Privatbesitz, Deutschland



Paul Klee
Kind und Tante, 1937, 149
Child and Aunt
oil on primed burlap
72,3 x 52,7 cm
Tokushima Modern Art Museum



Paul Klee
zwei Bäume, 1937, 251
Two Trees
tempera on paper on cardboard
24,8 x 30,5 cm
The University of Michigan Museum of Art, Ann Arbor, Schenkung
Mr. und Mrs. Harry L. Winston



Paul Klee
ausserdem ein Männchen, 1938, 7
Besides a Little Man
coloured paste on paper on cardboard
32,3 x 49,5 cm
Landau Fine Art, Montreal



Paul Klee
der Boulevard der Abnormen, 1938, 46
The Boulevard of the Abnormal Ones
coloured paste on paper on cardboard
33,2 x 49 cm
Kunstsammlung Nordrhein-Westfalen, Düsseldorf



Paul Klee
Milderung, 1938, 201
Softening
watercolour on primed burlap
58,4 x 38,1 cm
Privatbesitz



Paul Klee
ein Weib für Götter, 1938, 452
A Woman for Gods
A Bride for the Gods
coloured paste and watercolour on paper on cardboard
44,3 x 60,5 cm
Fondation Beyeler, Riehen/Basel, Sammlung Beyeler



Paul Klee
botanischer Garten (Abteilung exotische Bäume), 1939, 100
Botanical Garden (Exotic Tree Section)
coloured paste and watercolour on paper on cardboard
14,1 x 21 cm
Privatbesitz, Schweiz



Paul Klee
Gedanken über "unwiederbringlich", 1939, 135
Thoughts About "Lost for Ever"
watercolour on primed burlap
42 x 30,5 cm
Privatbesitz, Schweiz



Paul Klee
diese Blüte will verwelken, 1939, 1180
This Bloom is About to Wither
pencil, chalk and watercolour on paper on cardboard
29 x 20,5 cm
The Barnes Foundation, Philadelphia

