

# Chapman-Richards growth curves fitted parameters

| Species         | R <sup>2</sup> | a (m)    | b (years <sup>-1</sup> ) | c         | h <sub>0</sub> | h <sub>max</sub> (m) | t <sub>90</sub> (years) | r (m.years <sup>-1</sup> ) |
|-----------------|----------------|----------|--------------------------|-----------|----------------|----------------------|-------------------------|----------------------------|
| Deciduous oak   | 0.94           | 23.7±1.4 | 0.013±0.003              | 1.3±0.2   | 1.96           | 25.6±1.4             | 192±31                  | 0.24±0.03                  |
| Poplar          | 0.91           | 19.9±1.8 | 0.060±0.021              | 3.8±1.9   | 1.84           | 21.7±1.8             | 58±12                   | 0.40±0.08                  |
| Beech           | 0.90           | 29.6±2.6 | 0.019±0.006              | 1.7±0.4   | 2.07           | 31.7±2.6             | 146±33                  | 0.31±0.06                  |
| Chestnut        | 0.88           | 28.7±7.2 | 0.019±0.010              | 1.4±0.3   | 2.21           | 30.9±7.2             | 132±58                  | 0.38±0.01                  |
| Locust          | 0.70           | 21.9±2.8 | 0.038±0.017              | 1.9±0.8   | 2.16           | 24.0±2.8             | 75±22                   | 0.42±0.07                  |
| Maritime pine   | 0.95           | 22.1±2.0 | 0.031±0.007              | 2.0±0.4   | 1.95           | 24.1±2.0             | 92±15                   | 0.34±0.02                  |
| Scotch pine     | 0.88           | 21.4±3.0 | 0.021±0.008              | 1.5±0.4   | 2.07           | 23.5±3.0             | 127±39                  | 0.29±0.04                  |
| Douglas         | 0.96           | 20.9±0.9 | 0.065±0.008              | 4.4±0.9   | 1.97           | 22.8±0.9             | 56±4                    | 0.42±0.03                  |
| Austrian pine   | 0.97           | 16.7±0.6 | 0.058±0.007              | 3.5±0.6   | 2.03           | 18.7±0.6             | 59±4                    | 0.35±0.02                  |
| Fir/Spruce      | 0.92           | 30.0±2.8 | 0.094±0.019              | 24.3±14.0 | 1.94           | 31.9±2.8             | 57±6                    | 0.29±0.16                  |
| Mixed pines     | 0.77           | 20.7±1.7 | 0.064±0.022              | 3.8±2.0   | 2.05           | 22.7±1.7             | 55±10                   | 0.44±0.09                  |
| Mixed broadleaf | 0.95           | 16.5±0.5 | 0.030±0.005              | 1.9±0.3   | 1.9            | 18.4±0.5             | 94±10                   | 0.26±0.03                  |
| Mixed species   | 0.93           | 22.5±1.4 | 0.023±0.005              | 2.0±0.4   | 1.95           | 24.4±1.4             | 129±20                  | 0.24±0.04                  |
| Mixed conifer   | 0.73           | 25.7±2.5 | 0.108±0.038              | 35.0±42.1 | 2.04           | 27.7±2.5             | 53±8                    | 0.28±0.30                  |

*Table 1. Curve fitting results of PGC5. Coefficient of determination R<sup>2</sup>, fitted parameters a, b, and c, optimum offset h<sub>0</sub>, maximum height h<sub>max</sub>, time t<sub>90</sub> for which the growth curve has reached 90% of the maximum height, and early growth rate r. The uncertainty values are associated with the fitting process.*

| Species         | R <sup>2</sup> | a (m)    | b (years <sup>-1</sup> ) | c       | h <sub>0</sub> | h <sub>max</sub> (m) | t <sub>90</sub> (years) | r (m.years <sup>-1</sup> ) |
|-----------------|----------------|----------|--------------------------|---------|----------------|----------------------|-------------------------|----------------------------|
| Deciduous oak   | 0.95           | 24.6±0.8 | 0.019±0.003              | 1.2±0.1 | 1.96           | 26.5±0.8             | 128±16                  | 0.37±0.03                  |
| Poplar          | 0.85           | 19.5±1.4 | 0.128±0.053              | 4.1±2.9 | 1.84           | 21.4±1.4             | 28±6                    | 0.66±0.02                  |
| Beech           | 0.92           | 29.9±1.6 | 0.023±0.005              | 1.4±0.3 | 2.07           | 32.0±1.6             | 114±19                  | 0.43±0.05                  |
| Chestnut        | 0.94           | 21.6±1.0 | 0.044±0.007              | 1.4±0.2 | 2.21           | 23.9±1.0             | 57±6                    | 0.54±0.01                  |
| Locust          | 0.76           | 21.2±1.9 | 0.036±0.013              | 1.2±0.3 | 2.16           | 23.3±1.9             | 66±16                   | 0.51±0.02                  |
| Maritime pine   | 0.98           | 20.0±0.6 | 0.052±0.005              | 2.0±0.2 | 1.95           | 22.0±0.6             | 55±3                    | 0.48±0.01                  |
| Scotch pine     | 0.89           | 20.0±1.3 | 0.031±0.009              | 1.4±0.3 | 2.07           | 22.1±1.3             | 81±15                   | 0.40±0.03                  |
| Douglas         | 0.98           | 23.8±0.7 | 0.080±0.007              | 4.8±0.7 | 1.97           | 25.8±0.7             | 47±2                    | 0.57±0.02                  |
| Austrian pine   | 0.98           | 17.4±0.5 | 0.056±0.005              | 2.2±0.2 | 2.03           | 19.5±0.5             | 53±3                    | 0.44±0.01                  |
| Fir/Spruce      | 0.91           | 36.9±8.1 | 0.034±0.013              | 2.3±0.7 | 1.94           | 38.8±8.1             | 89±27                   | 0.51±0.03                  |
| Mixed pines     | 0.78           | 20.5±1.5 | 0.058±0.018              | 2.2±0.9 | 2.05           | 22.5±1.5             | 51±9                    | 0.52±0.04                  |
| Mixed broadleaf | 0.94           | 19.9±0.5 | 0.035±0.006              | 1.3±0.2 | 1.9            | 21.8±0.5             | 70±7                    | 0.44±0.02                  |
| Mixed species   | 0.91           | 21.8±0.9 | 0.032±0.007              | 1.6±0.3 | 1.95           | 23.7±0.9             | 85±12                   | 0.39±0.04                  |
| Mixed conifer   | 0.67           | 26.9±3.6 | 0.053±0.022              | 3.7±2.2 | 2.04           | 28.9±3.6             | 66±16                   | 0.45±0.14                  |

*Table 2. Curve fitting results of PGC25. CCoefficient of determination R<sup>2</sup>, fitted parameters a, b, and c, optimum offset h<sub>0</sub>, maximum height h<sub>max</sub>, time t<sub>90</sub> for which the growth curve has reached 90% of the maximum height, and early growth rate r. The uncertainty values are associated with the fitting process.*

| Species         | R <sup>2</sup> | a (m)    | b (years <sup>-1</sup> ) | c       | h <sub>0</sub> | h <sub>max</sub> (m) | t <sub>90</sub> (years) | r (m.years <sup>-1</sup> ) |
|-----------------|----------------|----------|--------------------------|---------|----------------|----------------------|-------------------------|----------------------------|
| Deciduous oak   | 0.95           | 26.1±0.7 | 0.021±0.004              | 1.0±0.1 | 1.96           | 28.0±0.7             | 106±13                  | 0.47±0.03                  |
| Poplar          | 0.81           | 19.7±1.3 | 0.261±0.086              | 9.5±8.2 | 1.84           | 21.5±1.3             | 17±2                    | 0.71±0.18                  |
| Beech           | 0.90           | 32.2±2.1 | 0.018±0.005              | 1.0±0.2 | 2.07           | 34.3±2.1             | 122±27                  | 0.53±0.04                  |
| Chestnut        | 0.94           | 22.7±0.9 | 0.040±0.007              | 0.9±0.1 | 2.21           | 24.9±0.9             | 54±6                    | 0.617±0.001                |
| Locust          | 0.70           | 21.6±2.3 | 0.024±0.014              | 0.6±0.2 | 2.16           | 23.7±2.3             | 70±28                   | 0.560±0.001                |
| Maritime pine   | 0.98           | 21.1±0.5 | 0.052±0.005              | 1.5±0.1 | 1.95           | 23.0±0.5             | 50±3                    | 0.555±0.003                |
| Scotch pine     | 0.90           | 22.6±1.4 | 0.026±0.007              | 0.9±0.2 | 2.07           | 24.7±1.4             | 84±17                   | 0.49±0.02                  |
| Douglas         | 0.97           | 28.2±1.0 | 0.071±0.007              | 3.5±0.5 | 1.97           | 30.2±1.0             | 49±3                    | 0.67±0.02                  |
| Austrian pine   | 0.87           | 19.6±1.6 | 0.034±0.010              | 0.9±0.2 | 2.03           | 21.7±1.6             | 62±13                   | 0.502±0.002                |
| Fir/Spruce      | 0.84           | 33.4±8.6 | 0.030±0.017              | 1.4±0.5 | 1.94           | 35.3±8.6             | 86±40                   | 0.60±0.01                  |
| Mixed pines     | 0.75           | 20.5±1.5 | 0.051±0.017              | 1.4±0.5 | 2.05           | 22.5±1.5             | 49±10                   | 0.56±0.02                  |
| Mixed broadleaf | 0.93           | 22.7±0.6 | 0.026±0.005              | 0.8±0.1 | 1.9            | 24.6±0.6             | 75±9                    | 0.54±0.02                  |
| Mixed species   | 0.92           | 23.3±0.8 | 0.031±0.006              | 1.1±0.2 | 1.95           | 25.2±0.8             | 77±10                   | 0.50±0.03                  |
| Mixed conifer   | 0.62           | 26.7±4.0 | 0.042±0.021              | 1.8±0.9 | 2.04           | 28.7±4.0             | 67±22                   | 0.55±0.07                  |

*Table 3. Curve fitting results of PGC50. Coefficient of determination R<sup>2</sup>, fitted parameters a, b, and c, optimum offset h<sub>0</sub>, maximum height h<sub>max</sub>, time t<sub>90</sub> for which the growth curve has reached 90% of the maximum height, and early growth rate r. The uncertainty values are associated with the fitting process.*

| Species         | R <sup>2</sup> | a (m)     | b (years <sup>-1</sup> ) | c       | h <sub>0</sub> | h <sub>max</sub> (m) | t <sub>90</sub> (years) | r (m.years <sup>-1</sup> ) |
|-----------------|----------------|-----------|--------------------------|---------|----------------|----------------------|-------------------------|----------------------------|
| Deciduous oak   | 0.90           | 25.9±1.4  | 0.012±0.004              | 0.6±0.1 | 5.18           | 31.1±1.4             | 137±32                  | 0.60±0.02                  |
| Poplar          | 0.76           | 18.9±1.2  | 0.315±0.113              | 9.6±9.1 | 4.07           | 22.9±1.2             | 14±2                    | 0.76±0.26                  |
| Beech           | 0.81           | 40.0±14.7 | 0.005±0.007              | 0.4±0.1 | 3.715          | 43.7±14.7            | 305±369                 | 0.67±0.09                  |
| Chestnut        | 0.87           | 12.2±0.9  | 0.054±0.013              | 2.2±0.6 | 12.626         | 24.9±0.9             | 43±5                    | 0.67±0.02                  |
| Locust          | 0.48           | 17.7±4.5  | 0.014±0.020              | 0.4±0.2 | 6.42           | 24.1±4.5             | 77±83                   | 0.62±0.04                  |
| Maritime pine   | 0.94           | 22.6±1.6  | 0.022±0.006              | 0.6±0.1 | 3.88           | 26.5±1.6             | 77±17                   | 0.61±0.01                  |
| Scotch pine     | 0.80           | 40.0±68.7 | 0.002±0.009              | 0.4±0.1 | 4.8            | 44.8±68.7            | 789±3976                | 0.58±0.61                  |
| Douglas         | 0.94           | 28.4±1.3  | 0.064±0.009              | 2.6±0.5 | 3.7            | 32.1±1.3             | 49±4                    | 0.75±0.02                  |
| Austrian pine   | 0.56           | 30.9±148  | 0.001±0.020              | 0.3±0.2 | 4.31           | 35.2±148             | 976±19026               | 0.56±1.88                  |
| Fir/Spruce      | 0.76           | 22.9±1.8  | 0.074±0.025              | 1.8±0.7 | 2.99           | 25.8±1.8             | 37±8                    | 0.716±0.002                |
| Mixed pines     | 0.50           | 18.0±7.9  | 0.015±0.025              | 0.6±0.3 | 7.63           | 25.7±7.9             | 96±118                  | 0.59±0.05                  |
| Mixed broadleaf | 0.84           | 16.8±0.9  | 0.023±0.007              | 0.9±0.2 | 10.22          | 27.0±0.9             | 77±14                   | 0.63±0.03                  |
| Mixed species   | 0.84           | 21.6±2.1  | 0.014±0.006              | 0.7±0.1 | 6.96           | 28.6±2.1             | 118±40                  | 0.58±0.02                  |
| Mixed conifer   | 0.49           | 22.8±4.1  | 0.039±0.026              | 1.3±0.7 | 5.165          | 27.9±4.1             | 61±26                   | 0.64±0.04                  |

*Table 4. Curve fitting results of PGC75. Coefficient of determination R<sup>2</sup>, fitted parameters a, b, and c, optimum offset h<sub>0</sub>, maximum height h<sub>max</sub>, time t<sub>90</sub> for which the growth curve has reached 90% of the maximum height, and early growth rate r. The uncertainty values are associated with the fitting process.*

| Species         | R <sup>2</sup> | a (m)     | b (years <sup>-1</sup> ) | c          | h <sub>0</sub> | h <sub>max</sub> (m) | t <sub>90</sub> (years) | r (m.years <sup>-1</sup> ) |
|-----------------|----------------|-----------|--------------------------|------------|----------------|----------------------|-------------------------|----------------------------|
| Deciduous oak   | 0.77           | 11.5±0.8  | 0.038±0.015              | 8.2±7.2    | 20.78          | 32.3±0.8             | 86±9                    | 0.71±0.04                  |
| Poplar          | 0.30           | 6.9±1.3   | 0.575±0.711              | 100.0±5989 | 17.65          | 24.6±1.3             | 9±1                     | 0.82±9.46                  |
| Beech           | 0.63           | 10.4±1.6  | 0.045±0.034              | 27.3±71.7  | 25.57          | 36.0±1.6             | 93±10                   | 0.852±0.002                |
| Chestnut        | 0.73           | 5.5±0.7   | 0.076±0.035              | 11.3±11.5  | 20.6796        | 26.1±0.7             | 38±2                    | 0.74±0.06                  |
| Locust          | 0.08           | 11.3±135  | 0.001±0.067              | 0.2±0.3    | 14.8012        | 26.1±135             | 296±15697               | 0.68±2.10                  |
| Maritime pine   | 0.60           | 40.0±404  | 0.002±0.022              | 0.9±0.4    | 18.11          | 58.1±404             | 1122±13065              | 0.70±0.85                  |
| Scotch pine     | 0.69           | 7.0±0.6   | 0.120±0.061              | 100.0±215  | 19.29          | 26.3±0.6             | 45±4                    | 0.66±0.07                  |
| Douglas         | 0.33           | 14.8±6.1  | 0.025±0.031              | 1.0±0.7    | 18.896         | 33.7±6.1             | 59±41                   | 0.887±0.004                |
| Austrian pine   | 0.33           | 4.5±1.2   | 0.119±0.114              | 100.0±397  | 18.86          | 23.3±1.2             | 41±4                    | 0.64±0.08                  |
| Fir/Spruce      | 0.28           | 7.9±0.7   | 0.239±0.167              | 6.7±11.2   | 16.76          | 24.7±0.7             | 12±1                    | 0.82±0.09                  |
| Mixed pines     | 0.08           | 40.0±1387 | 0.011±0.201              | 5.1±42.1   | 19.5536        | 59.6±1387            | 310±3732                | 0.65±0.04                  |
| Mixed broadleaf | 0.68           | 9.2±0.7   | 0.052±0.024              | 4.4±3.3    | 20.14          | 29.4±0.7             | 48±7                    | 0.78±0.08                  |
| Mixed species   | 0.61           | 8.0±0.8   | 0.142±0.094              | 100.0±294  | 19.08          | 27.1±0.8             | 39±4                    | 0.70±0.18                  |
| Mixed conifer   | 0.06           | 16.7±181  | 0.003±0.066              | 0.7±1.1    | 19.926         | 36.6±181             | 377±5708                | 0.77±0.89                  |

*Table 5. Curve fitting results of PGC95. Coefficient of determination R<sup>2</sup>, fitted parameters a, b, and c, optimum offset h<sub>0</sub>, maximum height h<sub>max</sub>, time t<sub>90</sub> for which the growth curve has reached 90% of the maximum height, and early growth rate r. The uncertainty values are associated with the fitting process.*

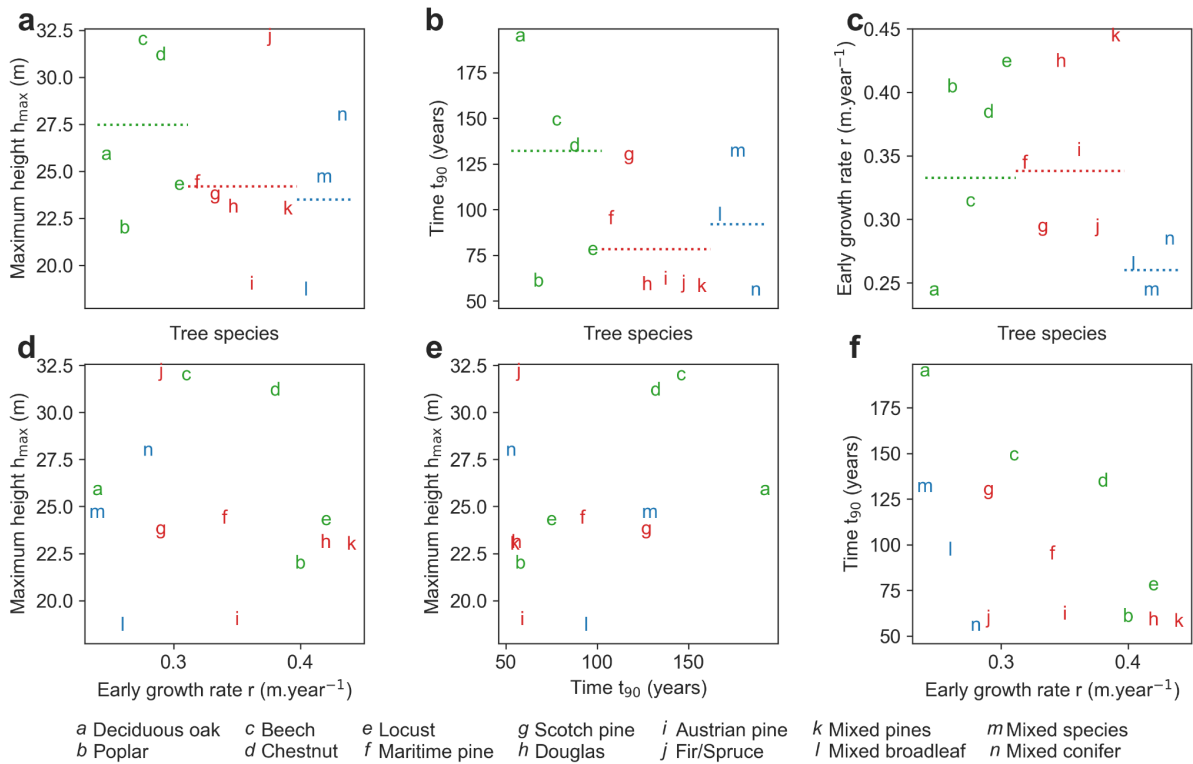


Figure 2. Growth metrics associated with the median growth curve  $PGC_5$ . Maximum height  $h_{max}$  (a), time  $t_{90}$  for which the growth curve has reached 90% of the maximum height (b), and early growth rate  $r$  (c) for broadleaf species (green), coniferous (red) or mixed species (blue) corresponding to the fitted parameters of the median growth curve  $PGC_{50}$ . The mean growth metrics for broadleaf, conifer, or mixed species are represented by a horizontal line. Maximum height  $h_{max}$  versus early growth rate  $r$  (d). Maximum height  $h_{max}$  versus time  $t_{90}$  (e). Time  $t_{90}$ , versus early growth rate  $r$  (f).

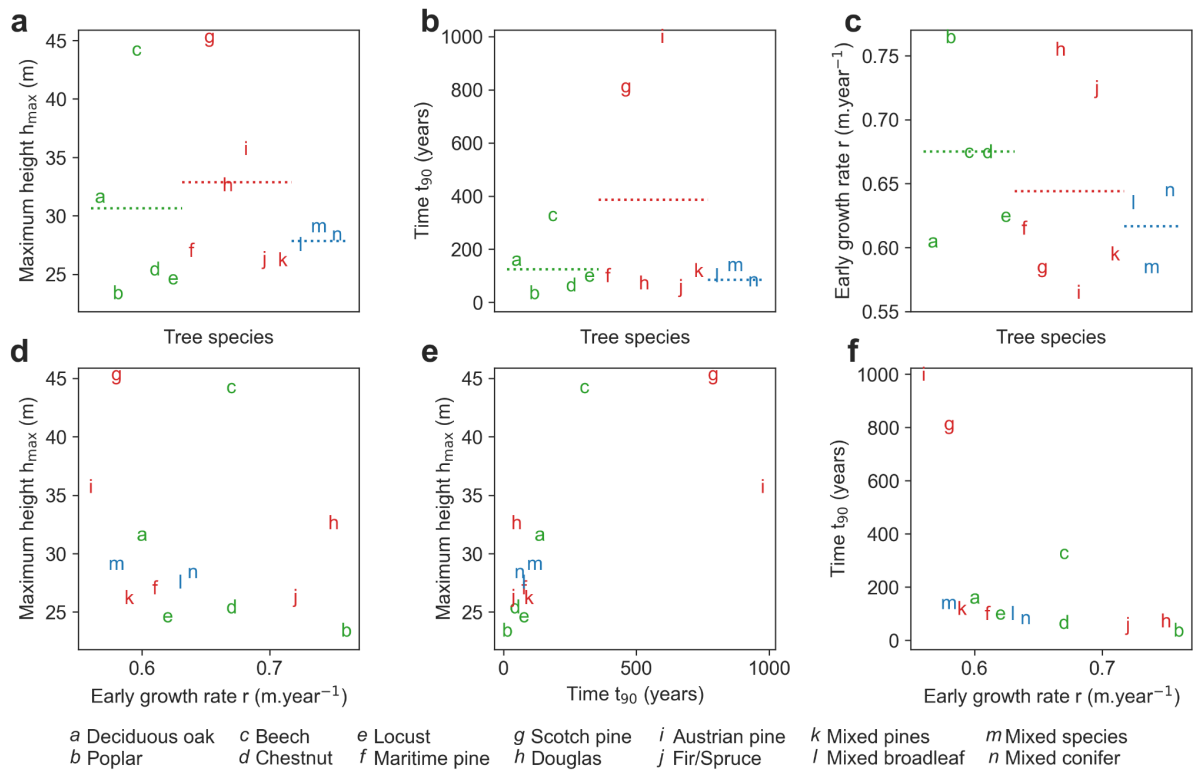


Figure 3. Growth metrics associated with the median growth curve  $PGC_{25}$ . Maximum height  $h_{max}$  (a), time  $t_{90}$  for which the growth curve has reached 90% of the maximum height (b), and early growth rate  $r$  (c) for broadleaf species (green), coniferous (red) or mixed species (blue) corresponding to the fitted parameters of the median growth curve  $PGC_{50}$ . The mean growth metrics for broadleaf, conifer, or mixed species are represented by a horizontal line. Maximum height  $h_{max}$  versus early growth rate  $r$  (d). Maximum height  $h_{max}$  versus time  $t_{90}$  (e). Time  $t_{90}$  versus early growth rate  $r$  (f).

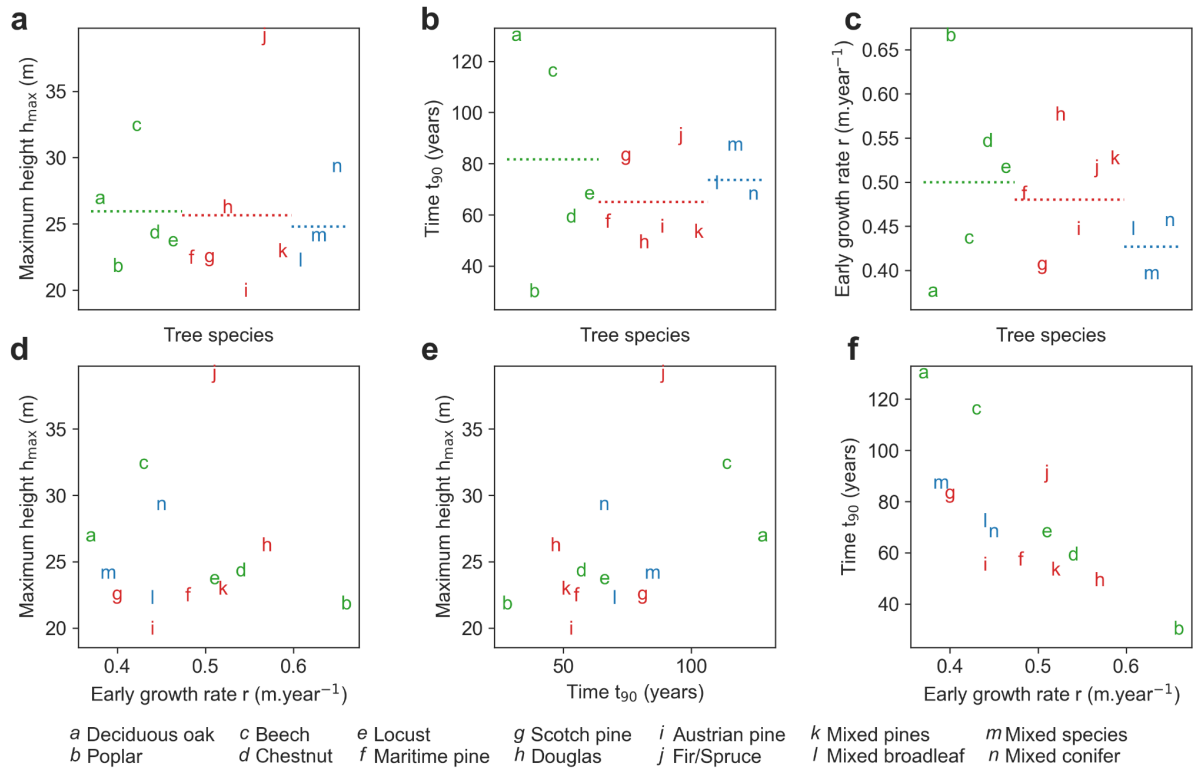


Figure 4. Growth metrics associated with the median growth curve  $PGC_{75}$ . Maximum height  $h_{max}$  (a), time  $t_{90}$  for which the growth curve has reached 90% of the maximum height (b), and early growth rate  $r$  (c) for broadleaf species (green), coniferous (red) or mixed species (blue) corresponding to the fitted parameters of the median growth curve  $PGC_{50}$ . The mean growth metrics for broadleaf, conifer, or mixed species are represented by a horizontal line. Maximum height  $h_{max}$  versus early growth rate  $r$  (d). Maximum height  $h_{max}$  versus time  $t_{90}$  (e). Time  $t_{90}$  versus early growth rate  $r$  (f).



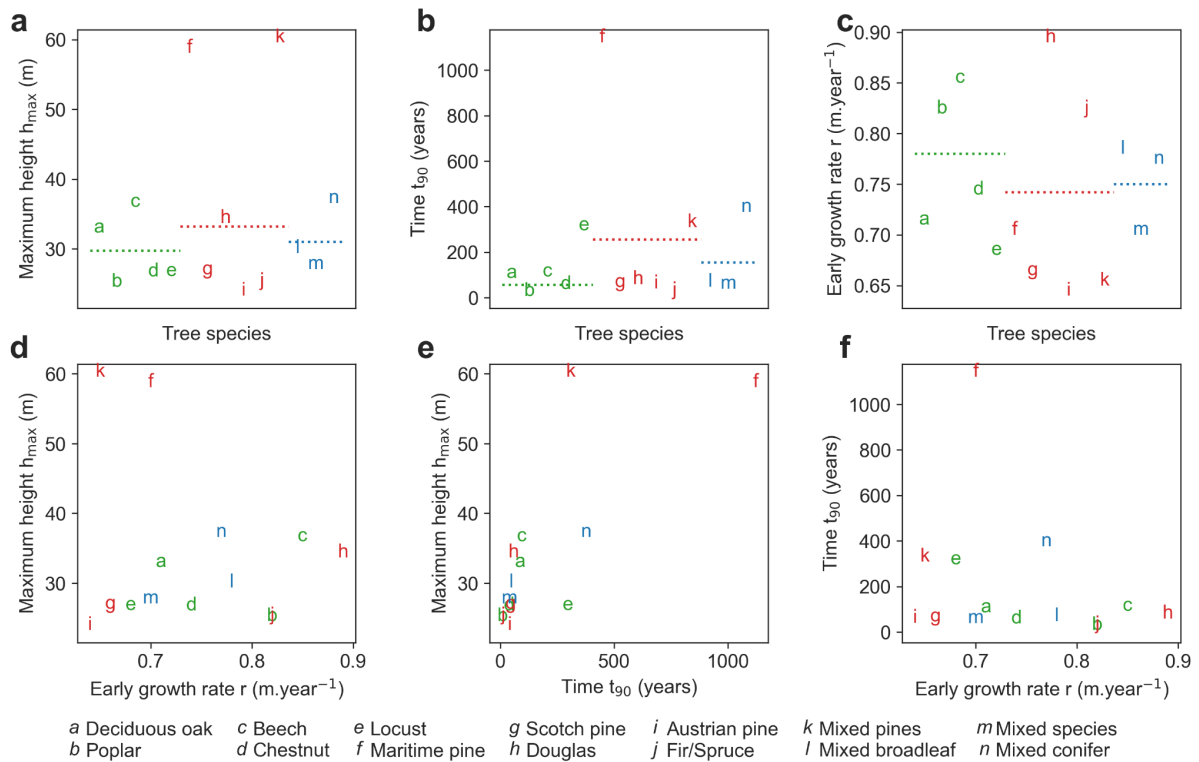


Figure 5. Growth metrics associated with the median growth curve  $PGC_{95}$ . Maximum height  $h_{max}$  (a), time  $t_{90}$  for which the growth curve has reached 90% of the maximum height (b), and early growth rate  $r$  (c) for broadleaf species (green), coniferous (red) or mixed species (blue) corresponding to the fitted parameters of the median growth curve  $PGC_{50}$ . The mean growth metrics for broadleaf, conifer, or mixed species are represented by a horizontal line. Maximum height  $h_{max}$  versus early growth rate  $r$  (d). Maximum height  $h_{max}$  versus time  $t_{90}$  (e). Time  $t_{90}$  versus early growth rate  $r$  (f).