



# The climate stories of Aklavik

A JOURNEY INTO THE PAST

COMIC BOOK



[geotop.ca](http://geotop.ca) | [nunataryuk.org](http://nunataryuk.org)

## AUTHORS

**Jade Falardeau**, graduate from Université du Québec à Montréal

**Marie-Michèle Ouellet-Bernier**, graduate from Université du Québec à Montréal

**Mark-Antoine Thibodeau Breault**, illustrator

## COMMUNITY COLLABORATORS

**Cassandra Paul**, Community of Aklavik

**Richard Gordon**, Herschel Island – Qikiqtaruk Senior Park Ranger

**Participants in the workshop in Aklavik, March 2020 and June 2022**

## UNIVERSITY COLLABORATORS

**Susanna Gartler**, University of Vienna

**Anne de Vernal**, Université du Québec à Montréal

**Etienne Boucher**, Université du Québec à Montréal

**Audrey Limoges**, University of New Brunswick

## GRAPHICS

**Mark-Antoine Thibodeau-Breault**, illustrator

**Éliza Lefebvre-Breton**, Repro-UQAM (front page)

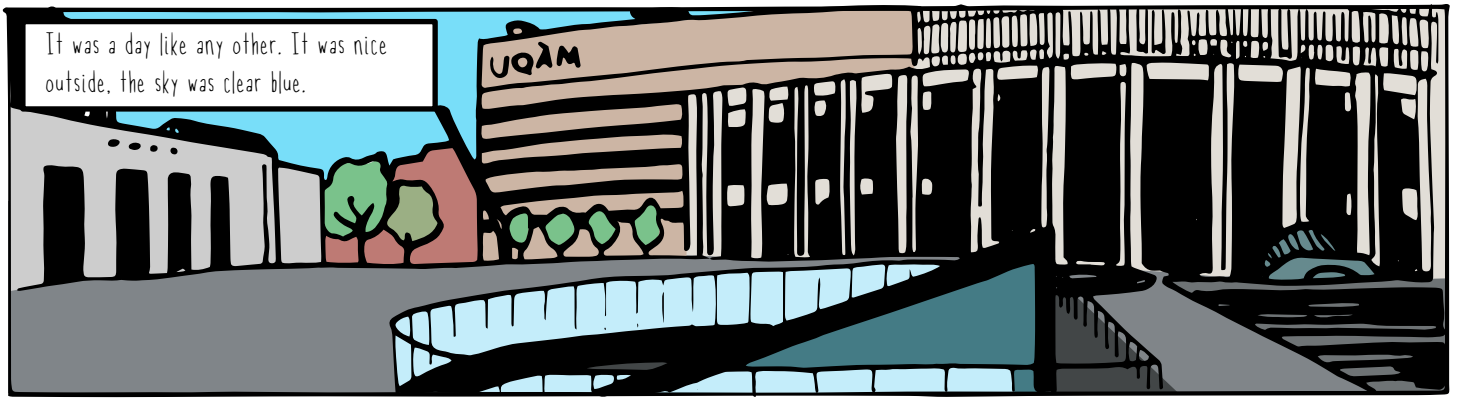
## FUNDING SUPPORTS

**Fonds de recherche Québécois - Nature et Technologie (FRQNT)**

**Research center in Earth system dynamics (Geotop)**

**Northern Scientific Training Program (NSTP)**





It was a day like any other. It was nice outside, the sky was clear blue.



Next stop, Geotop laboratory!

Located within the President-Kennedy Pavilion of the Université du Québec à Montréal.



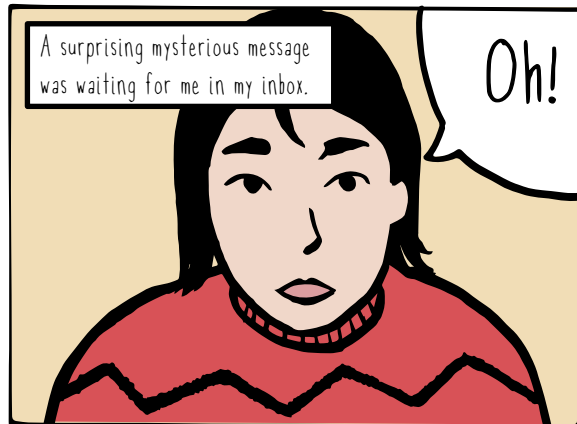
First, the hallways labyrinth...



To finally get to the breathtaking view from my working space!

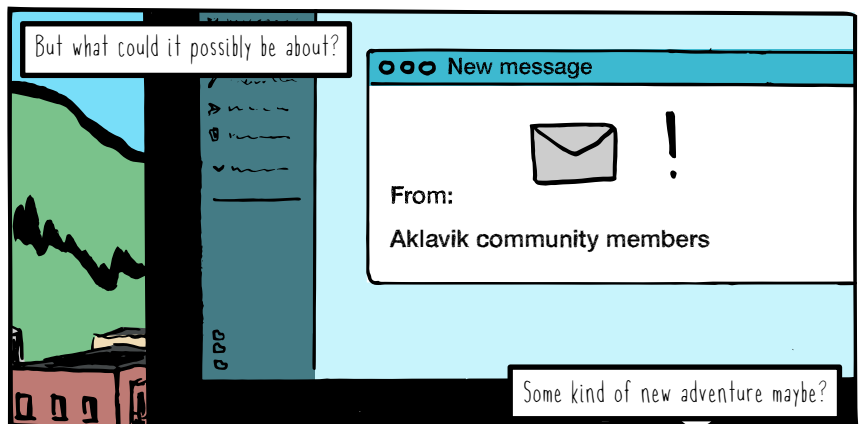


I turn on my computer, hoping to find some good news.



A surprising mysterious message was waiting for me in my inbox.

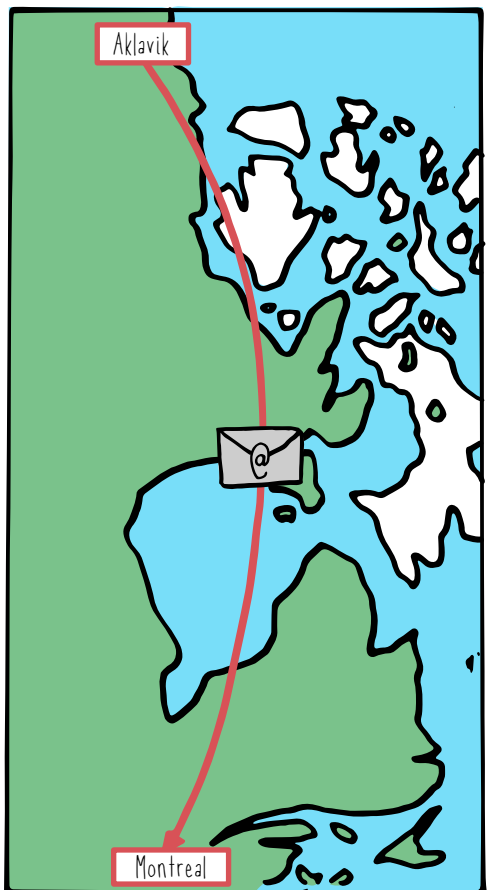
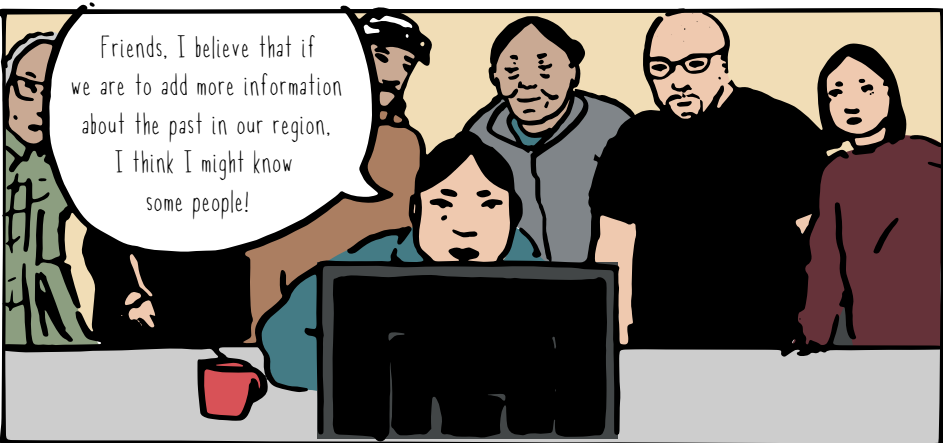
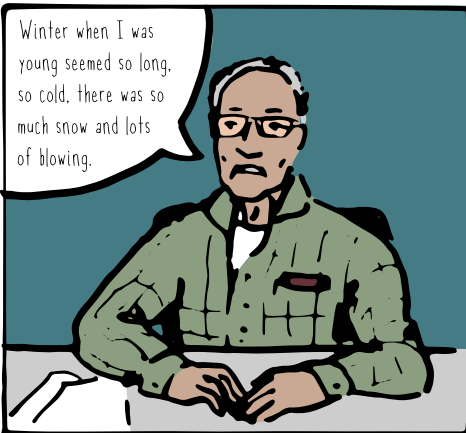
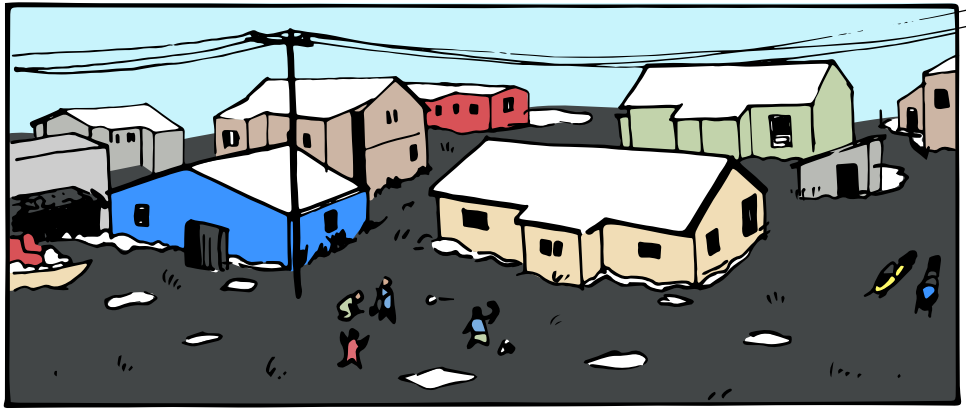
Oh!

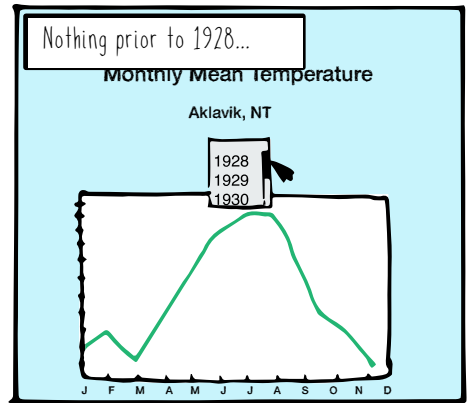
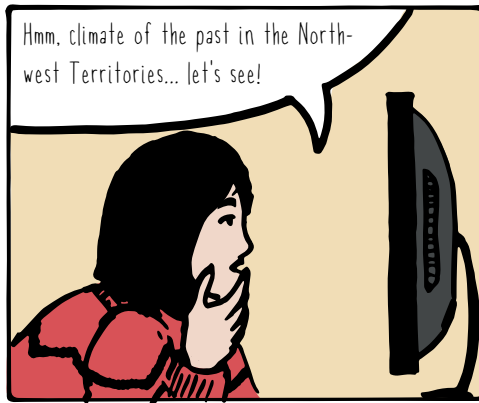


But what could it possibly be about?

ooo New message  
From: Aklavik community members

Some kind of new adventure maybe?

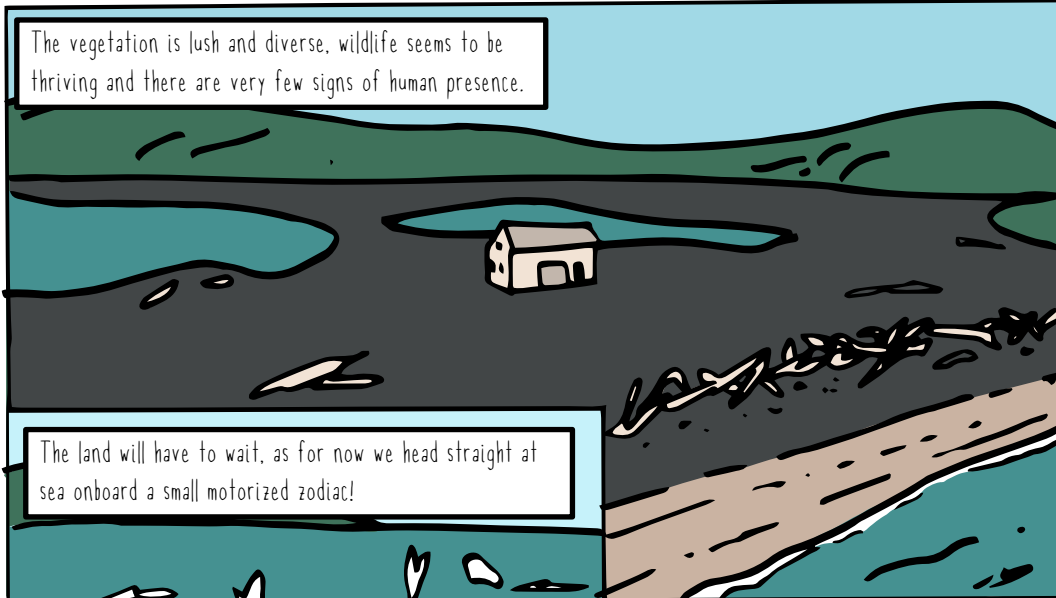




Go to activity 1 to see what is hiding in the peat core.



Herschel Island - Qikiqtaruk



The vegetation is lush and diverse, wildlife seems to be thriving and there are very few signs of human presence.

The land will have to wait, as for now we head straight at sea onboard a small motorized zodiac!



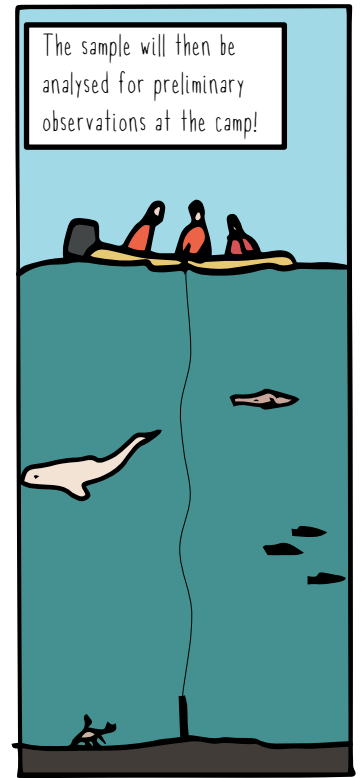
But there is no time for sightseeing!



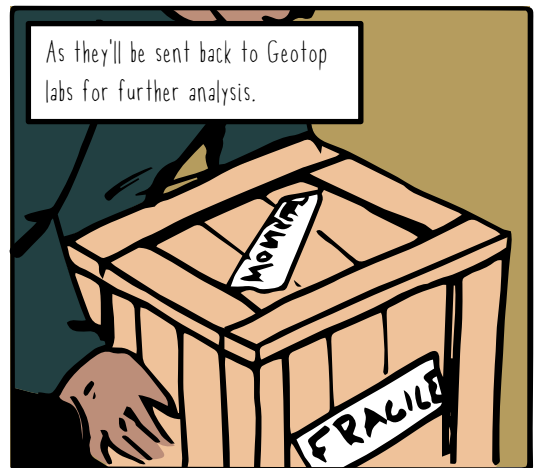
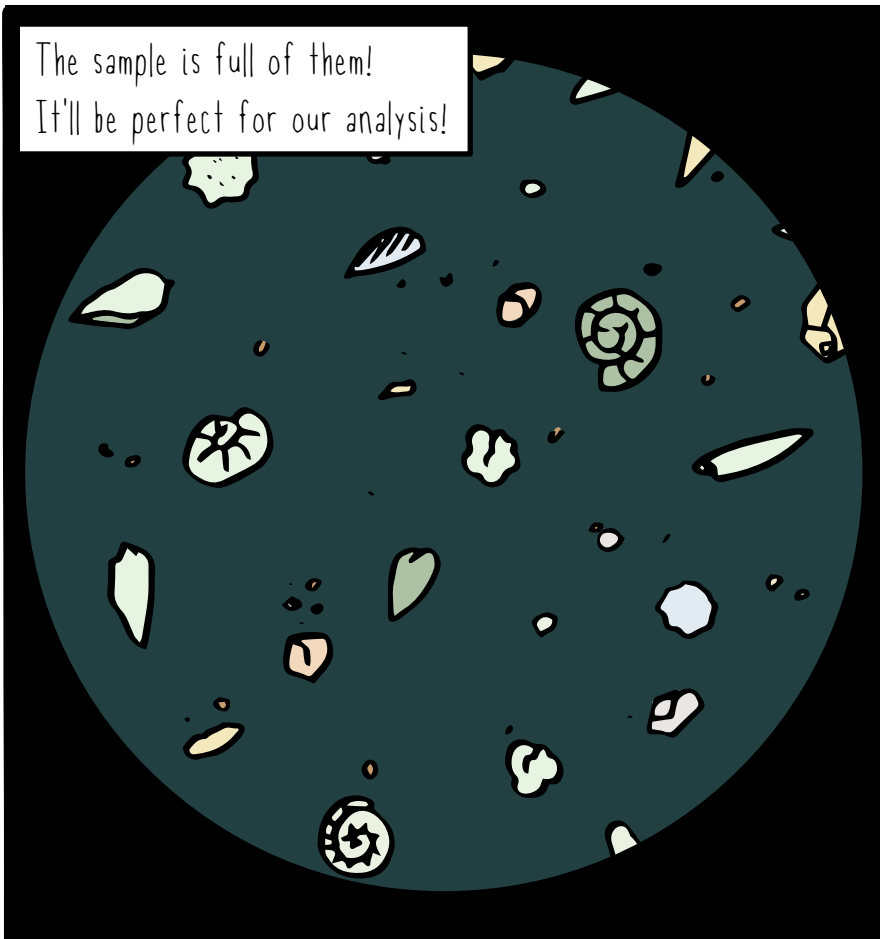
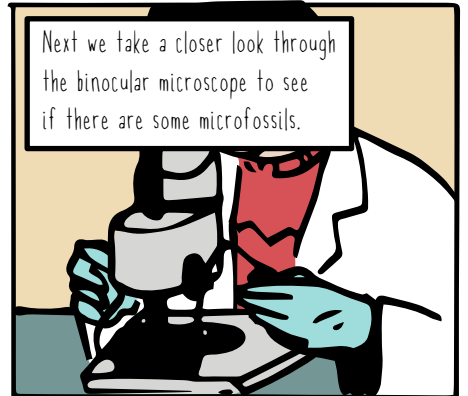
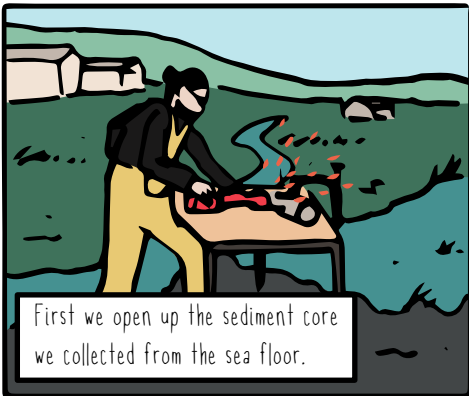
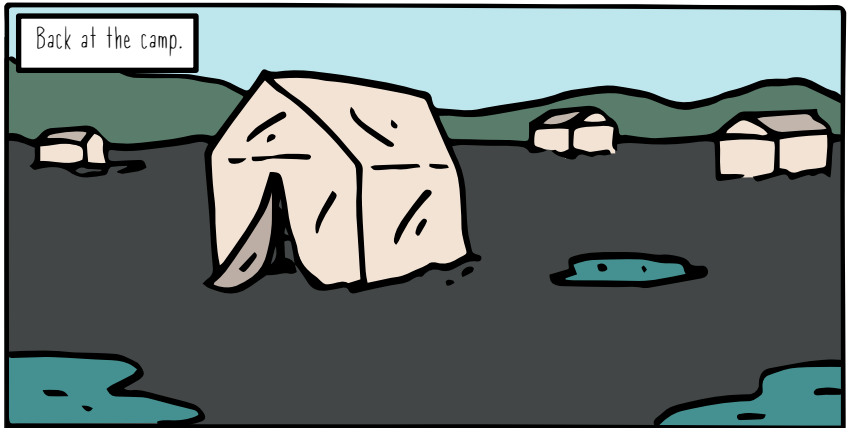
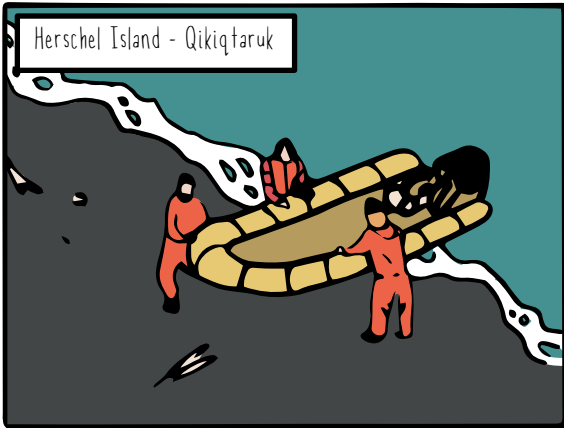
Hold on tight!

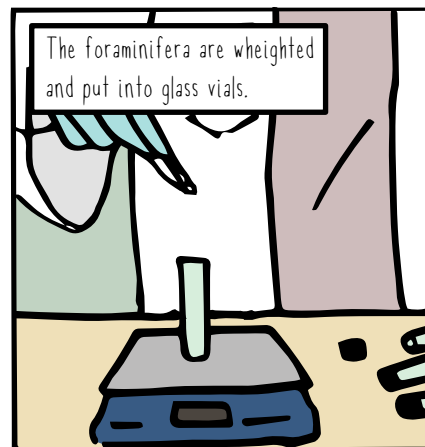
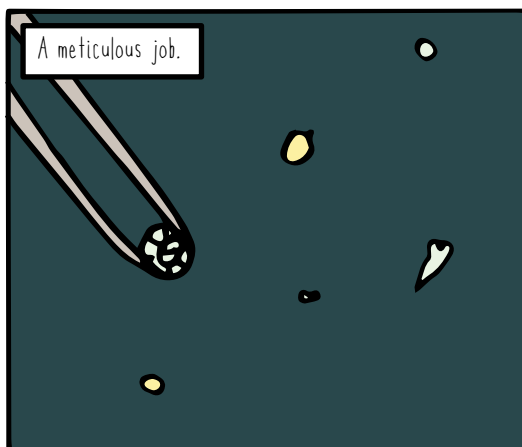
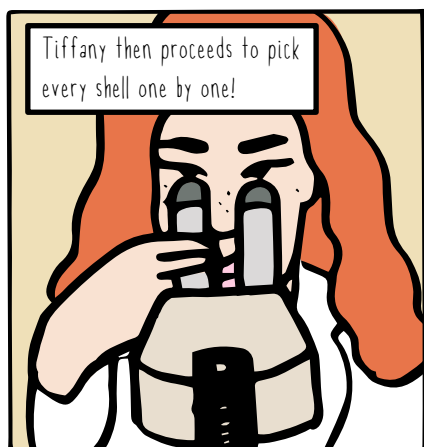
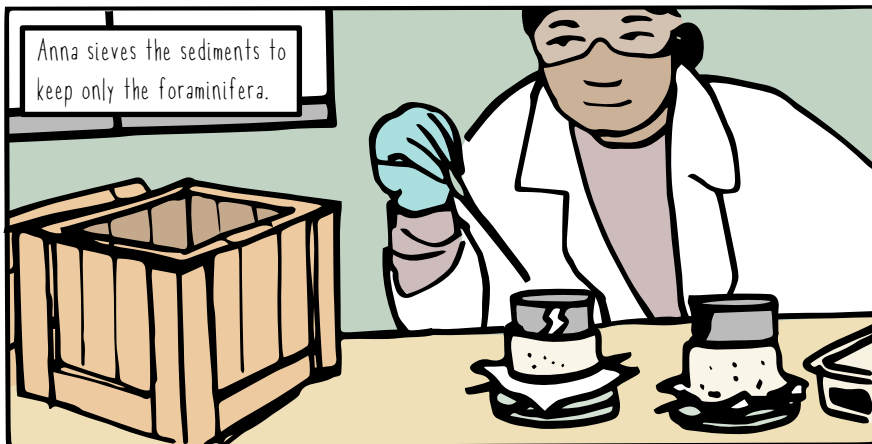
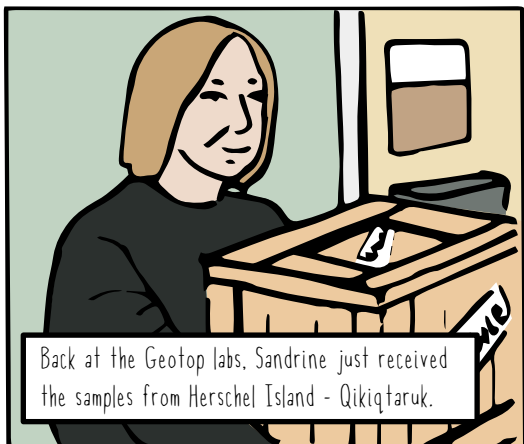
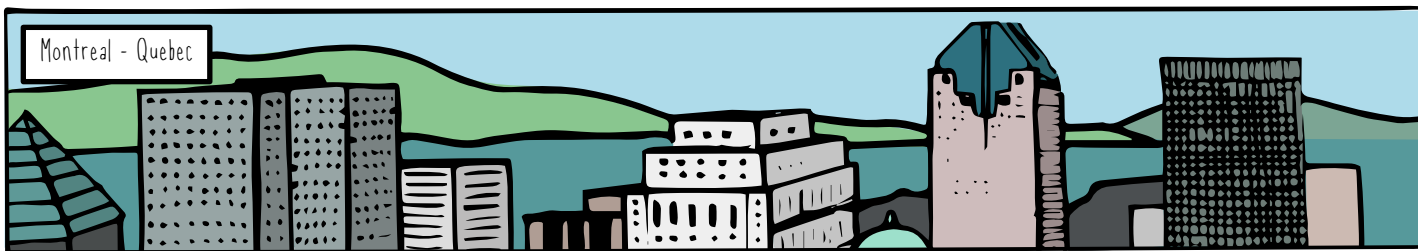


We are collecting a sediment core from the bottom of the sea with Jade a PhD student.



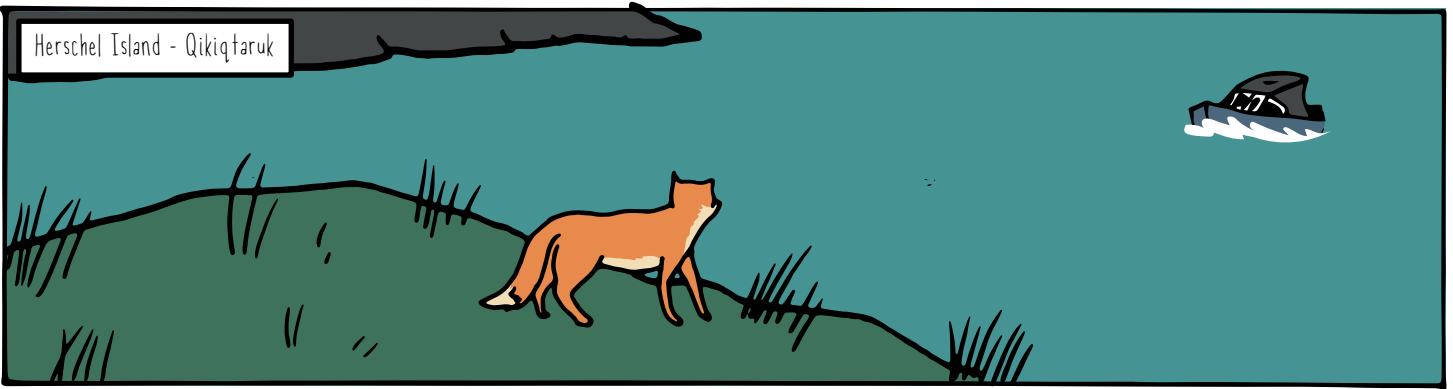
The sample will then be analysed for preliminary observations at the camp!







Herschel Island - Qikiqtaruk



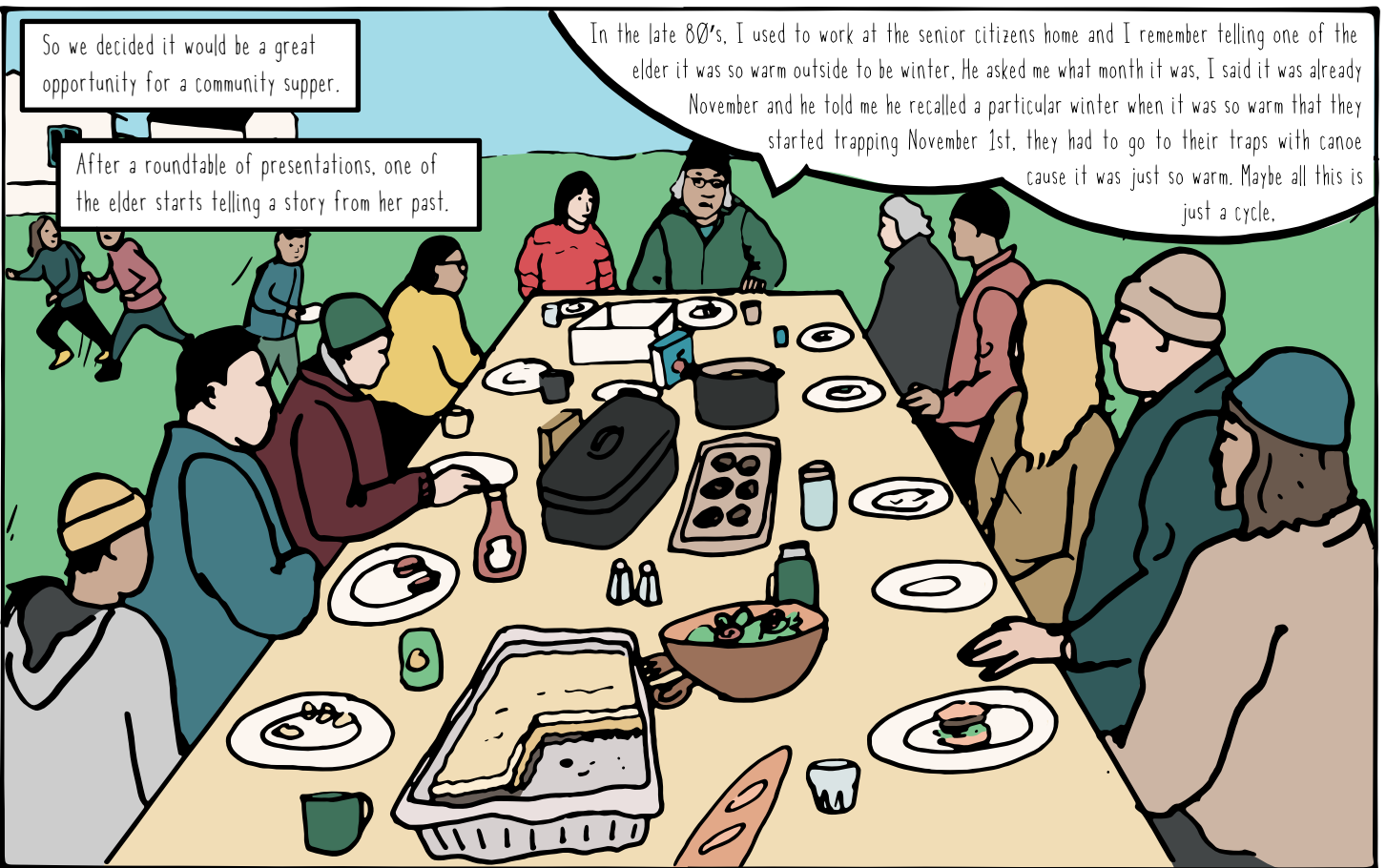
It's the Aklavik Youth and Elder program!



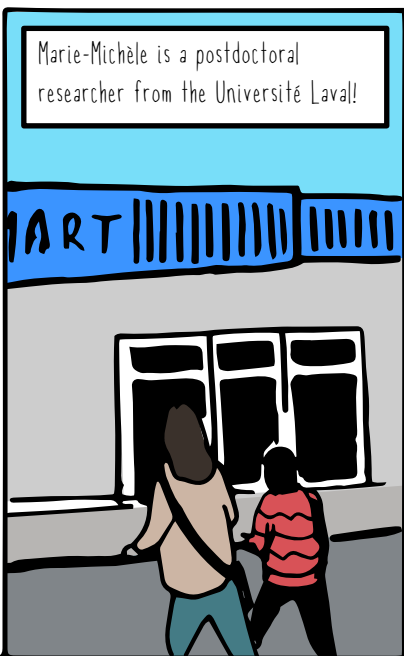
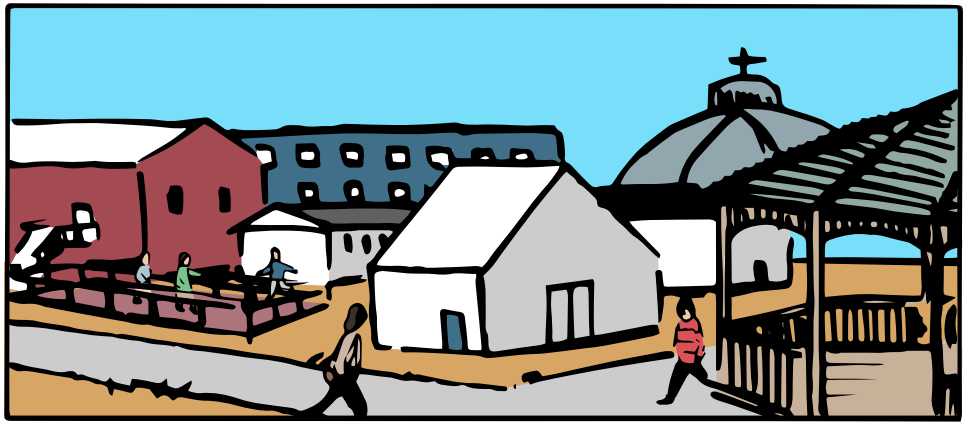
So we decided it would be a great opportunity for a community supper.

After a roundtable of presentations, one of the elder starts telling a story from her past.

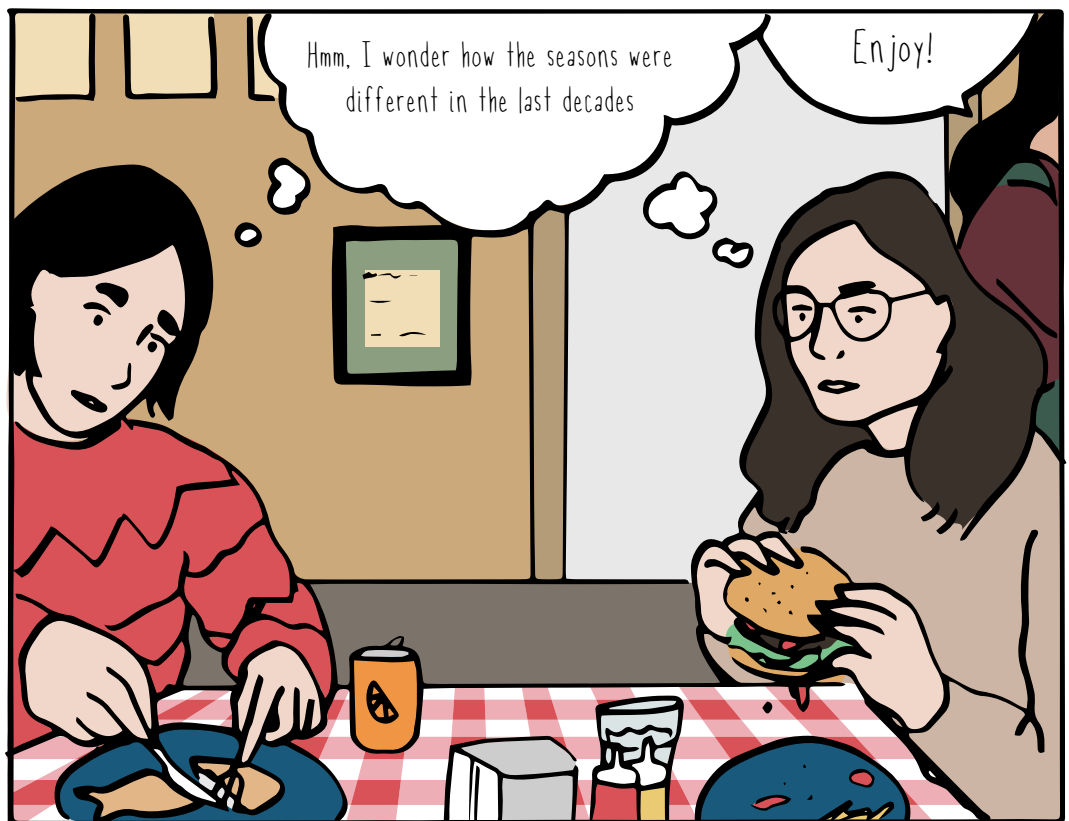
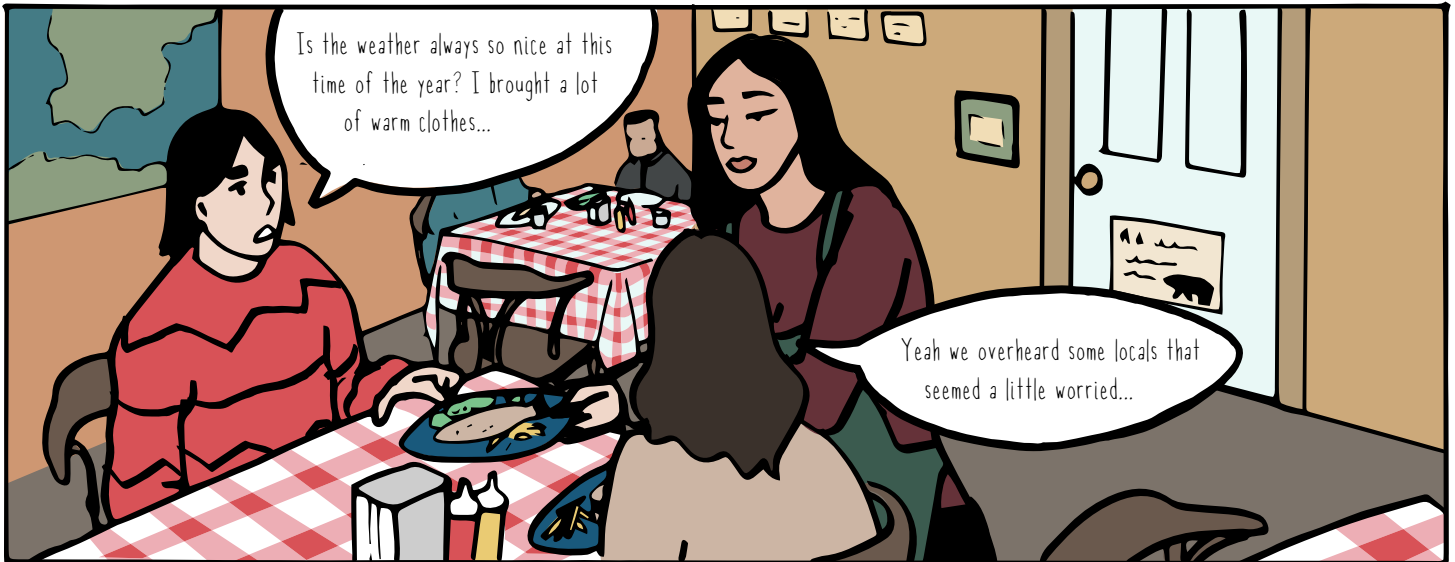
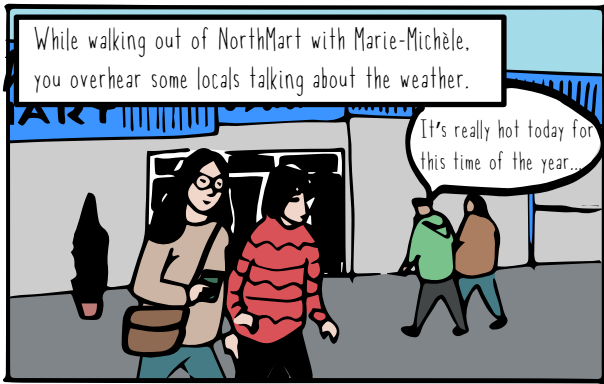
In the late 80's, I used to work at the senior citizens home and I remember telling one of the elder it was so warm outside to be winter. He asked me what month it was, I said it was already November and he told me he recalled a particular winter when it was so warm that they started trapping November 1st, they had to go to their traps with canoe cause it was just so warm. Maybe all this is just a cycle.



Go to activity 2 to read the whole story.



Go to activity 3 to take a look at some archives.



Go to activity 4 to check the weather record during winter.

Marie-Michèle and Jade invite you to a weekend getaway in a wooden cabin not too far from Aklavik.

How nice! A little break wouldn't be so bad!



A man emerges from the lake!

Professor Boucher explains that you can determine the summer weather conditions in which the tree grew by measuring its growth rings.

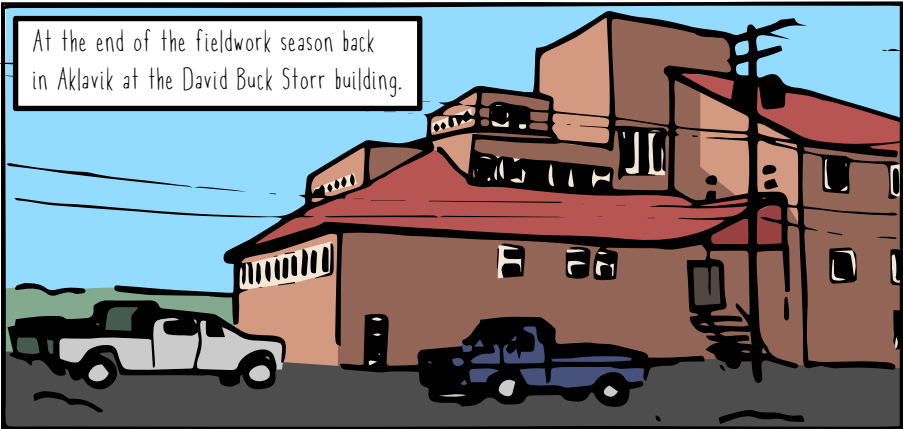
It's professor Etienne Boucher coming out of a dive!

He was looking for trees that sank in the lake many years ago.

It seems time off will have to wait!

Go to activity 5 to help Etienne analyse the tree ring sample.

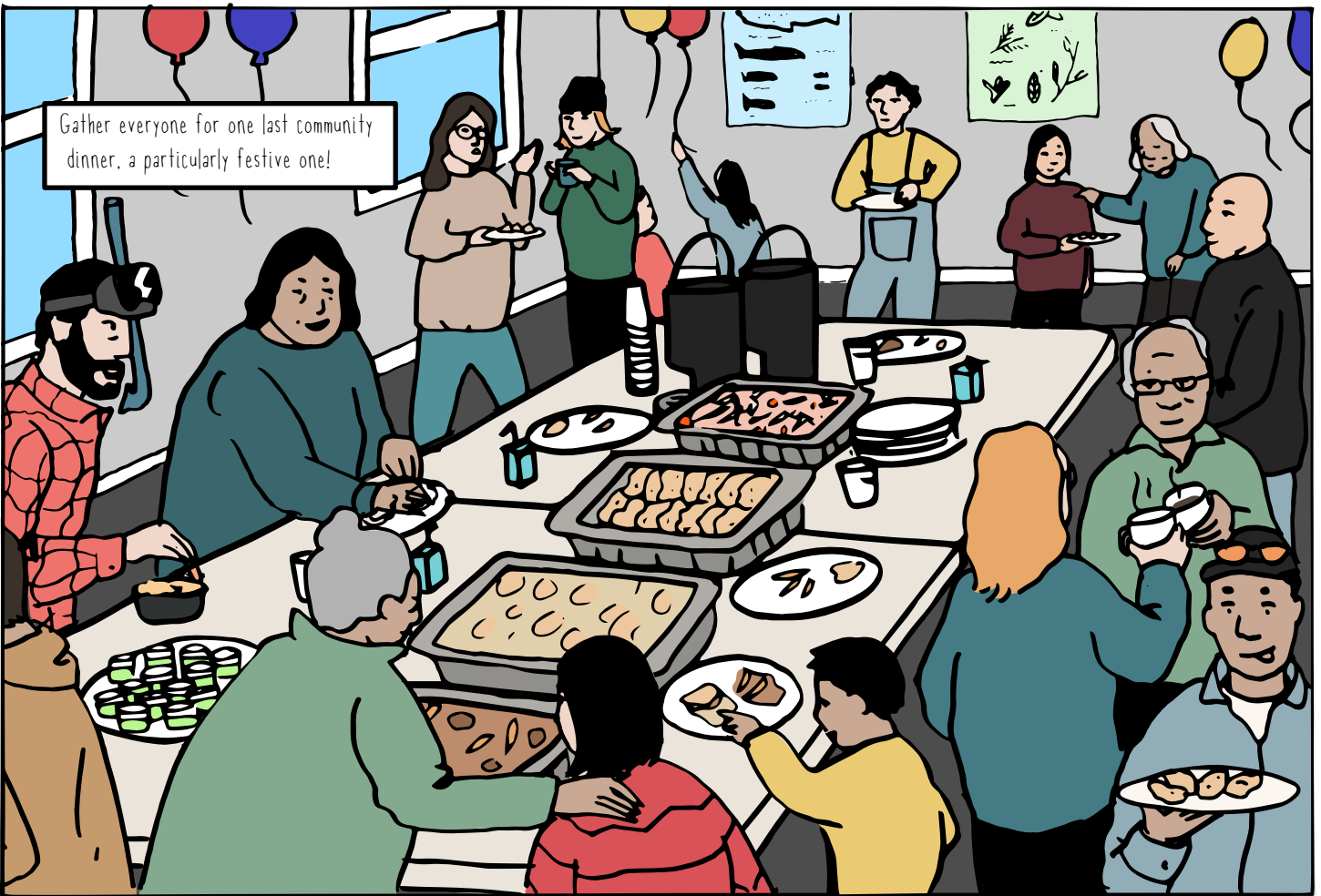
You receive the results from the Stable isotopes Laboratory, go to activity 6 to unmask what it means.



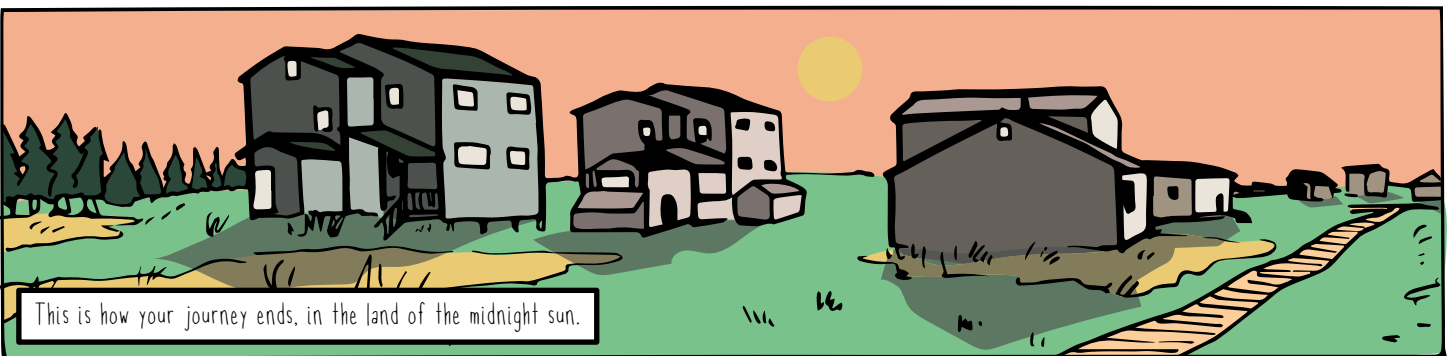
At the end of the fieldwork season back in Aklavik at the David Buck Storr building.



With all the stories shared and the data analysed, there was only one thing left to do it seemed...



Gather everyone for one last community dinner, a particularly festive one!



This is how your journey ends, in the land of the midnight sun.