

EYES HEARTS HANDS Urban Revolution

Loredana STASISIN

Technical Expert / Living Future Europe

-

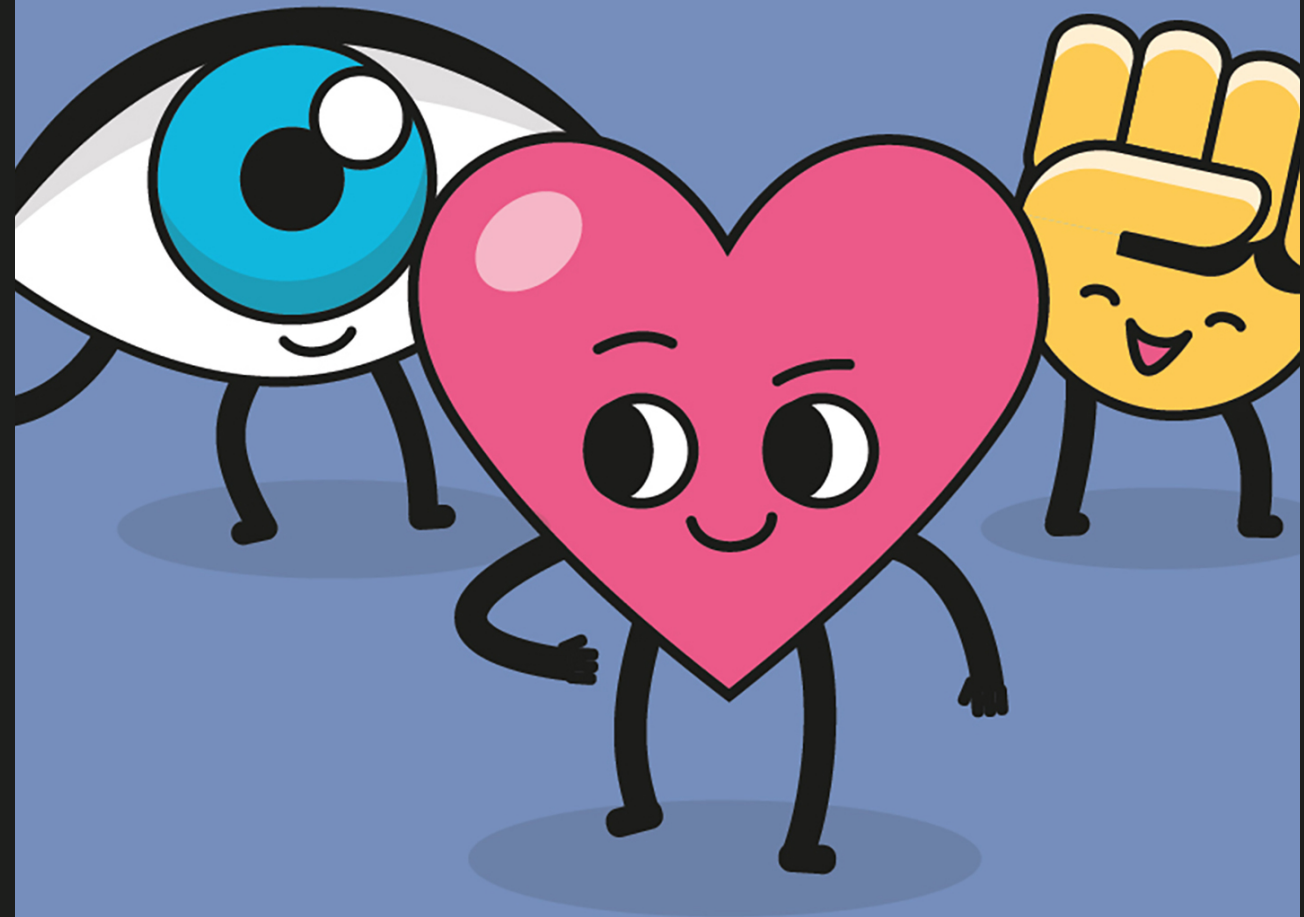
loredana.stasisin@living-future.eu

eyesheartshands.eu



1/6

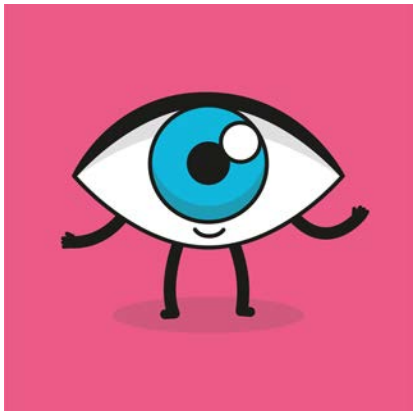
THE URBAN
REVOLUTION
STARTS FROM US



THREE ELEMENTS TO MAKE CHANGE HAPPEN:

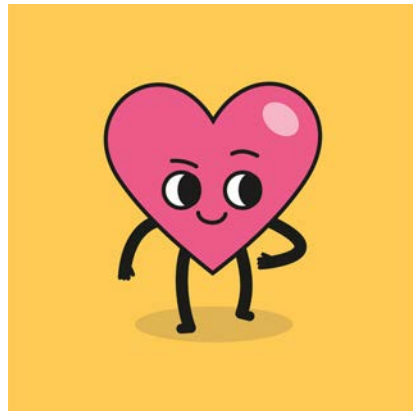
EYES

Aesthetically viable and socially accepted urban transformation



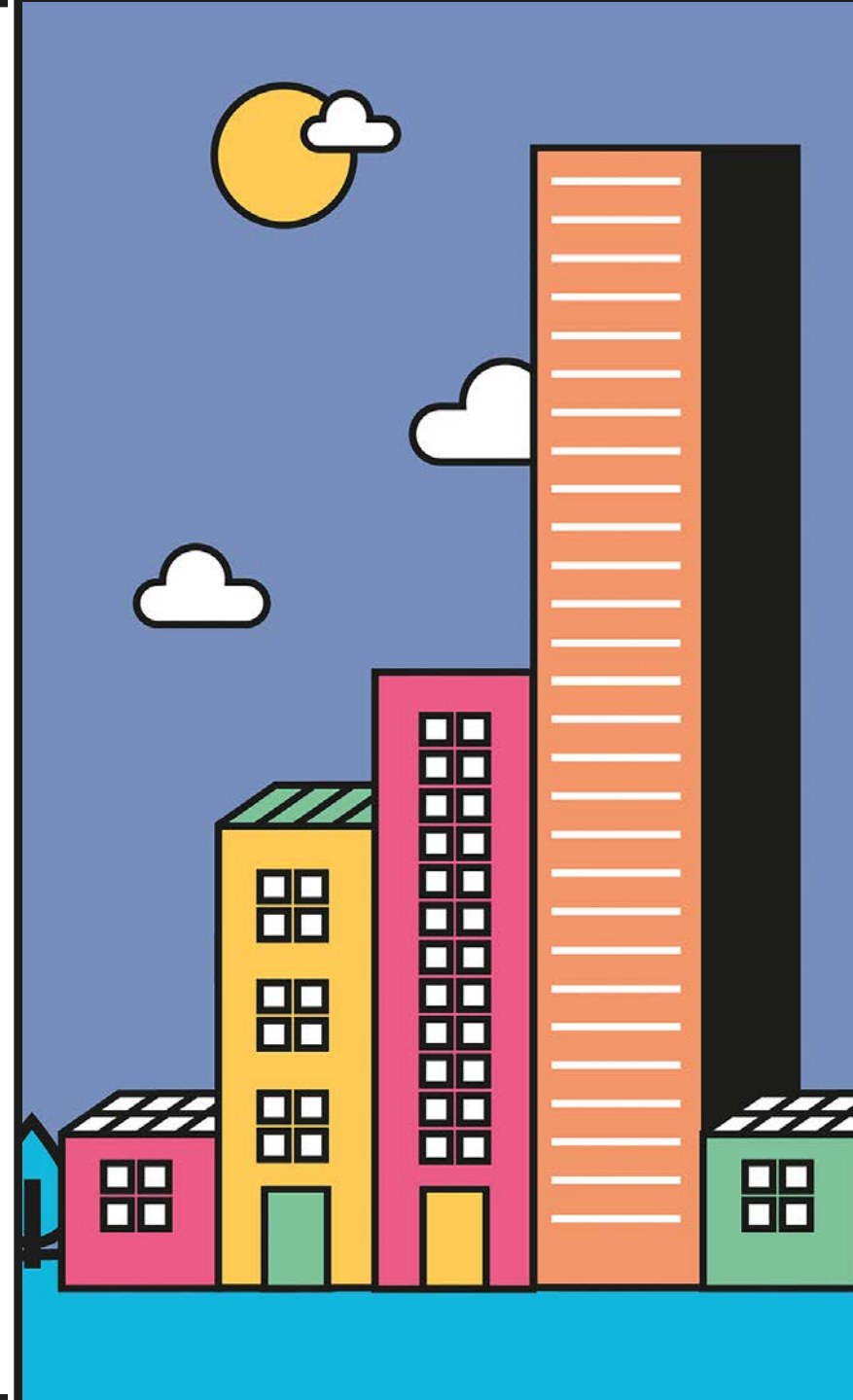
HEARTS

Inclusive and socially fair involvement of local communities



HANDS

Concrete engagement actions for full sustainability





CITIZENS AT THE FOREFRONT OF THE URBAN REVOLUTION

The project will deploy a set of tailored social innovation actions to engage and commit the participation of relevant urban players at multiple and multidisciplinary levels:

- technology co-design
- co-financing
- aesthetic co-creation

The aim is to design and apply solutions to cities' environmental, social, and infrastructural challenges and make them sustainable and resilient for the long haul.

LIGHTHOUSE DISTRICTS

The “lighthouse districts” are cities that lead the path towards sustainable, beautiful and inclusive cities through:

- Adopting digital, smart energy efficient solutions, circular and modular renovation toolkits and eco-design
- Promoting people-centred business models that favour energy communities, common spaces, co-investment in renovation, and foster frameworks to empower residents
- Experiment co-creation and engagement practices in districts, engaging several disciplines as a link to the New European Bauhaus.





LH1 - HØJE -TAASTRUP (DENMARK)

The municipality of Høje-Taastrup is committed to responding to social and environmental challenges exacerbated by segregation and social exclusion through the establishment of a Citizen Energy Community.



LH2 – KOZANI (GREECE)

Kozani's goal is to attain carbon neutrality by 2030. In order to improve the appearance of the city, the district is undergoing the energy transition from lignite-based DHN to renewable energies. Citizens are included in social engagement and co-design activities.



LH3 – ZOERSEL (BELGIUM)

The municipality of Zoersel intends to create a new, multi-use library building that will strengthen the community spirit of the area. The local community is encouraged to collaborate and co-create at the library by exchanging knowledge, abilities, and experiences.



LH4 – MAIA (PORTUGAL)

The Sobreiro social housing neighborhood, which lies in the heart of Maia, today consists of 47 structures overall. Between 2012 and 2021, it underwent a partial renovation, which improved the buildings' energy efficiency. The district aims to co-design for an urban transformation by involving vulnerable residents.



LH 5 – IZMIR (TURKEY)

Located in the Turkish Aegean, Izmir is one of the largest Mediterranean port cities. The province of Izmir has 30 districts spread across its 12.000 km² of land, 11 of which are located in the metropolis. The district aims to turn the historical city center into an innovation hub.



LH 6 – OSIJEK (CROATIA)

The fourth-largest city in Croatia, Osijek, serves as a focal point for all of Eastern Croatia (Slavonija, Baranja, and Srijem), where 84.9% of the colonies are in danger of losing their population. The district is committed to renovating urban areas and raising aesthetic standards while taking into account heritage preservation.



LH 7 – BIODISTRETTO DELLA VIA AMERINA E DELLE FORRE (ITALY)

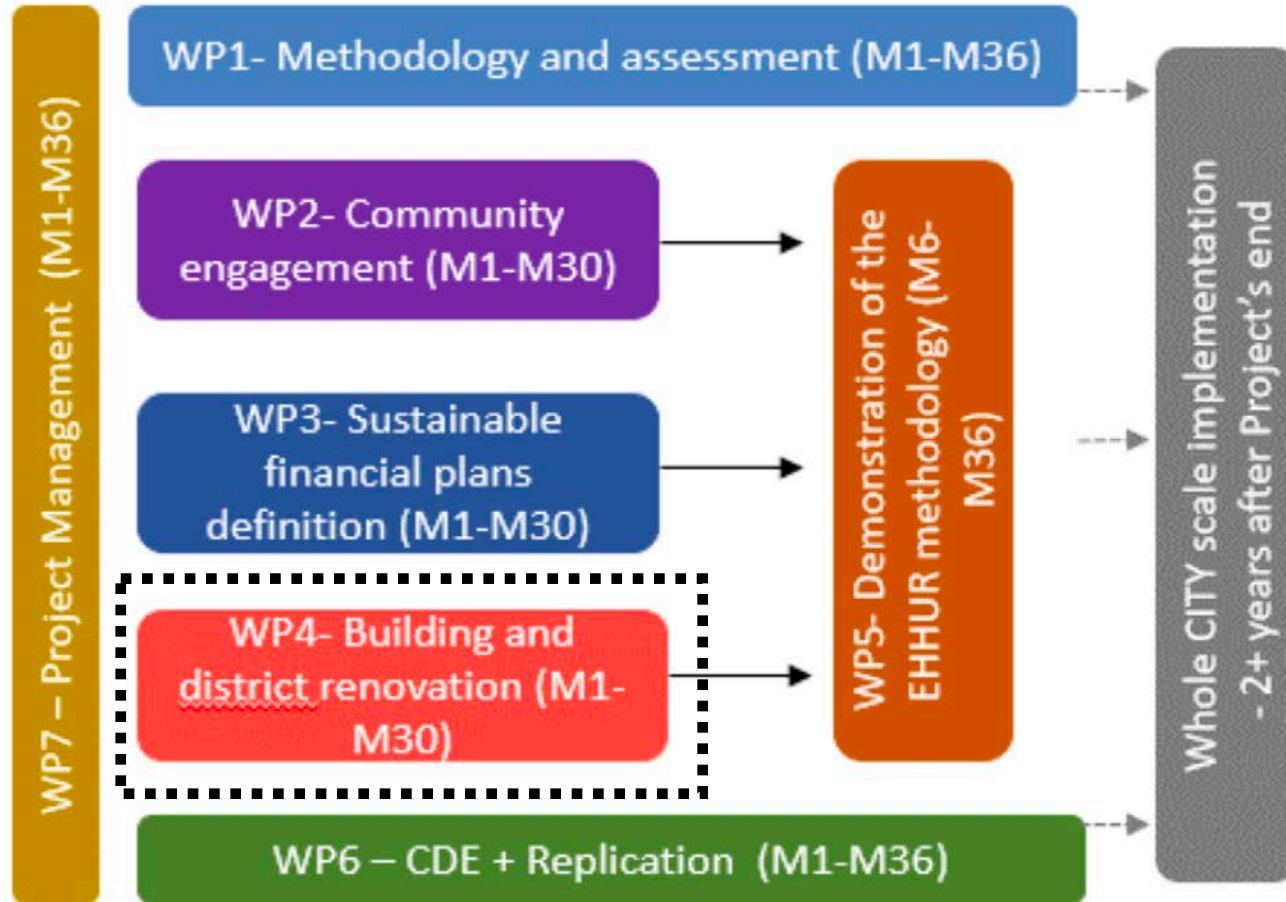
The Biodistretto aspires for a sustainable transformation across several industries, including slow and sustainable tourism, energy transition, and organic agriculture. The goals of the bio-district are to advance the ecological transformation of the region as a whole and enhance societal well-being.

2/6

**CO-DESIGNING
THE FRAMEWORK**



LFE TASKS



Living Future Europe:
_Carlo BATTISTI
_Loredana STASISIN

CO-DESIGN

as a building process

WP4

Co-Designing the Process

01. Mapping the landscape <i>Joint questionnaire – cross WPs</i>	05. Update <i>Contributions - WP partners</i>
02. Defining the Framework <i>Brainstorming sessions – WP partners</i>	06. Validation <i>Peer review - WP partners</i>
03. Development <i>Contribution – WP partners</i>	07. Guidance & Training Tools <i>Workshops & Presentations – cross WPs & LHs</i>
04. Crosscheck <i>Collaborative work sessions – WP partners</i>	08. Communication & Feedback <i>Surveys & Brainstorming sessions– cross WPs & LHs</i>

* WP - Work Package / LH - Lighthouse

3/6

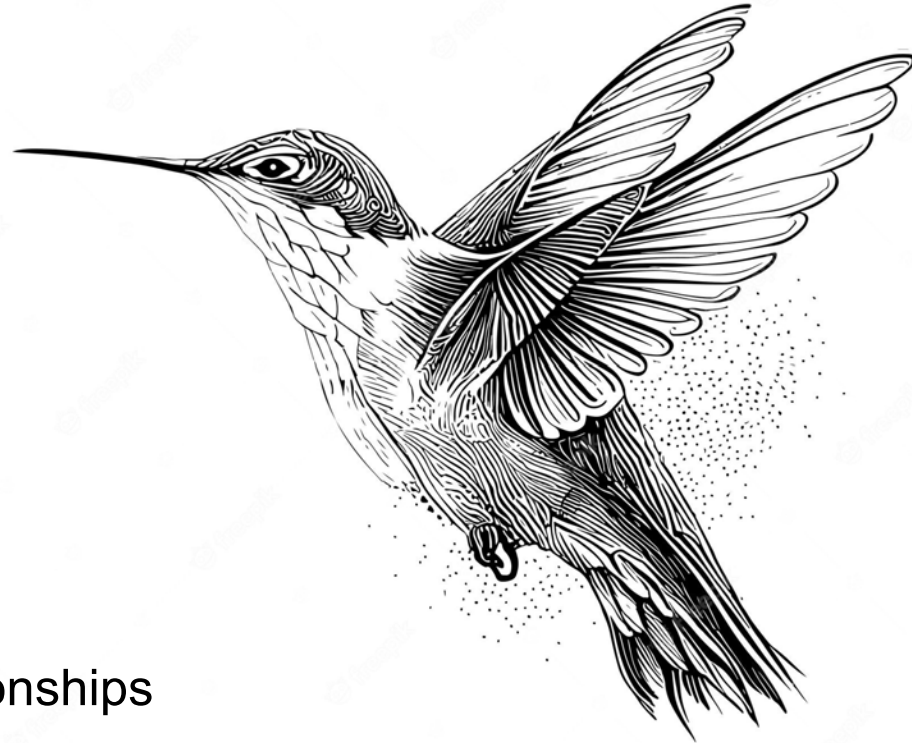
**WHAT IS
NEB?**



THE NEB WAY

it is about the process

- . **Systems Thinking** - complexity
- . **Co-Creation** - imagination
- . **Human-Centered Design** - relationships



The fable of the hummingbird from the Quechua people in Peru

care

time

REGENERATIVE

humility

MEASURING THE NEBishness

considering Multi-Criteria Analysis (MCA)

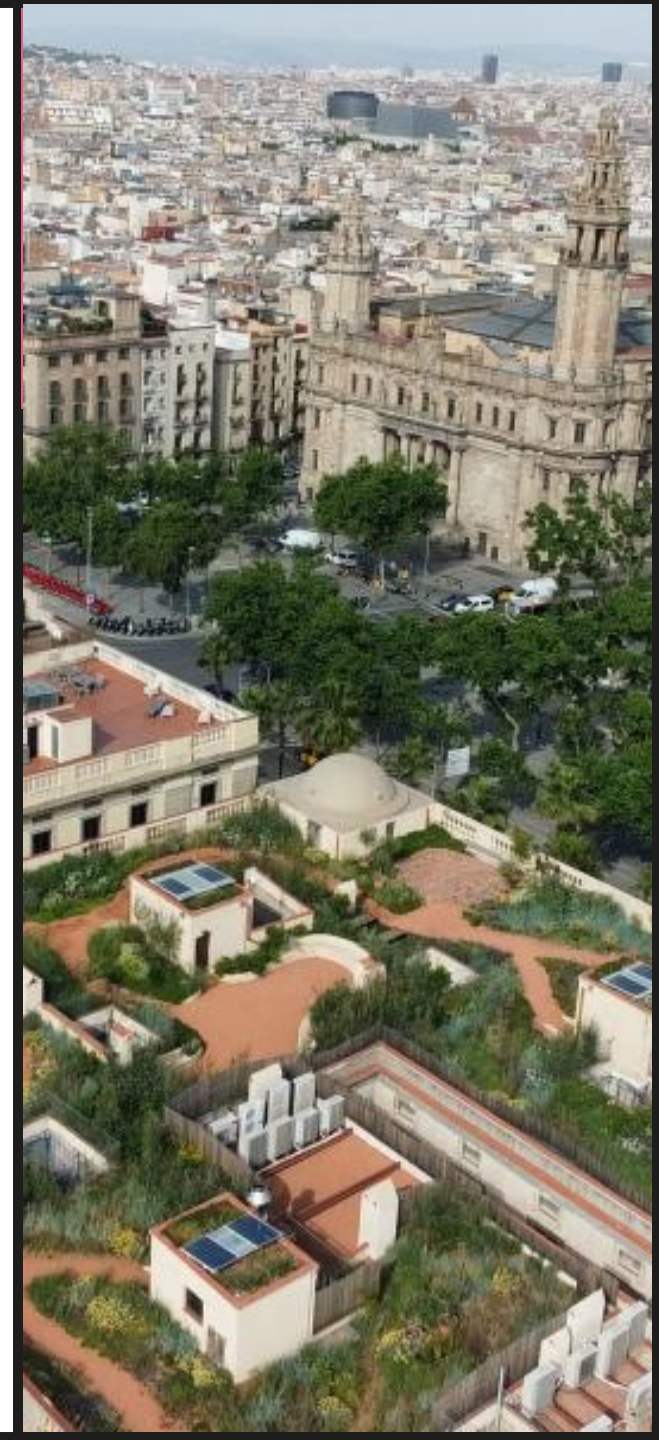
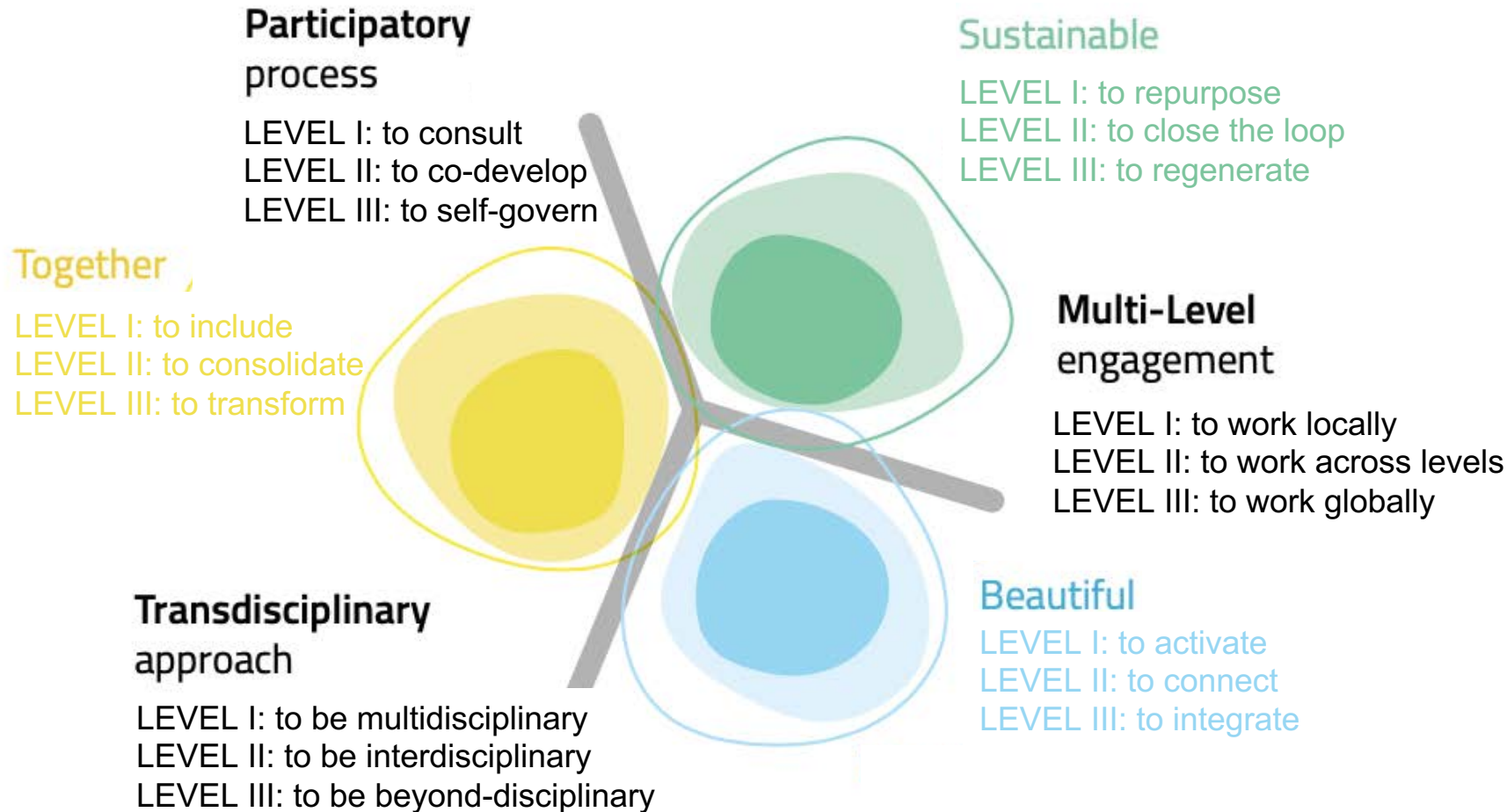
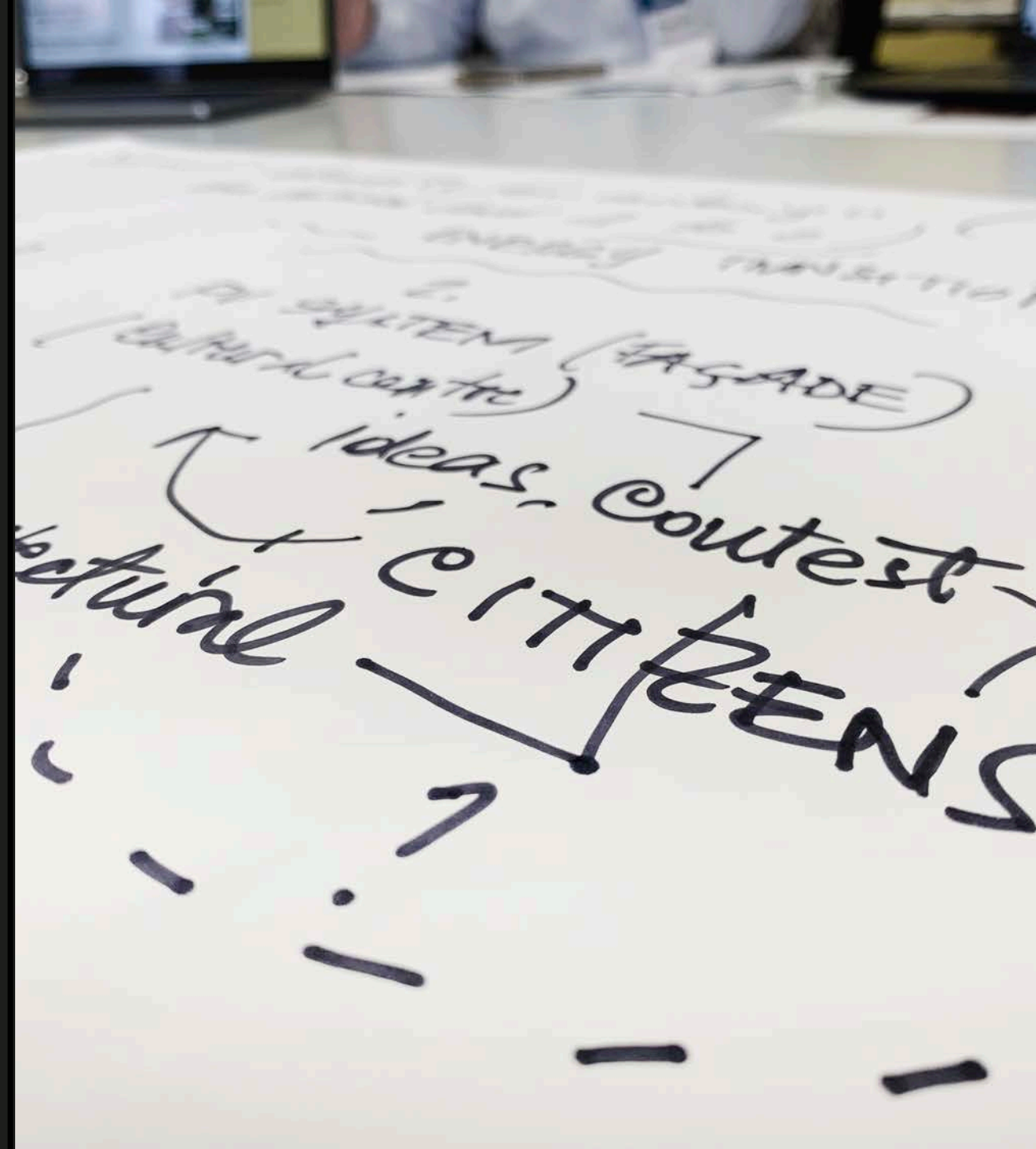


Photo: Xifré's Rooftop: "Floating" Wild Garden [ID: 166]

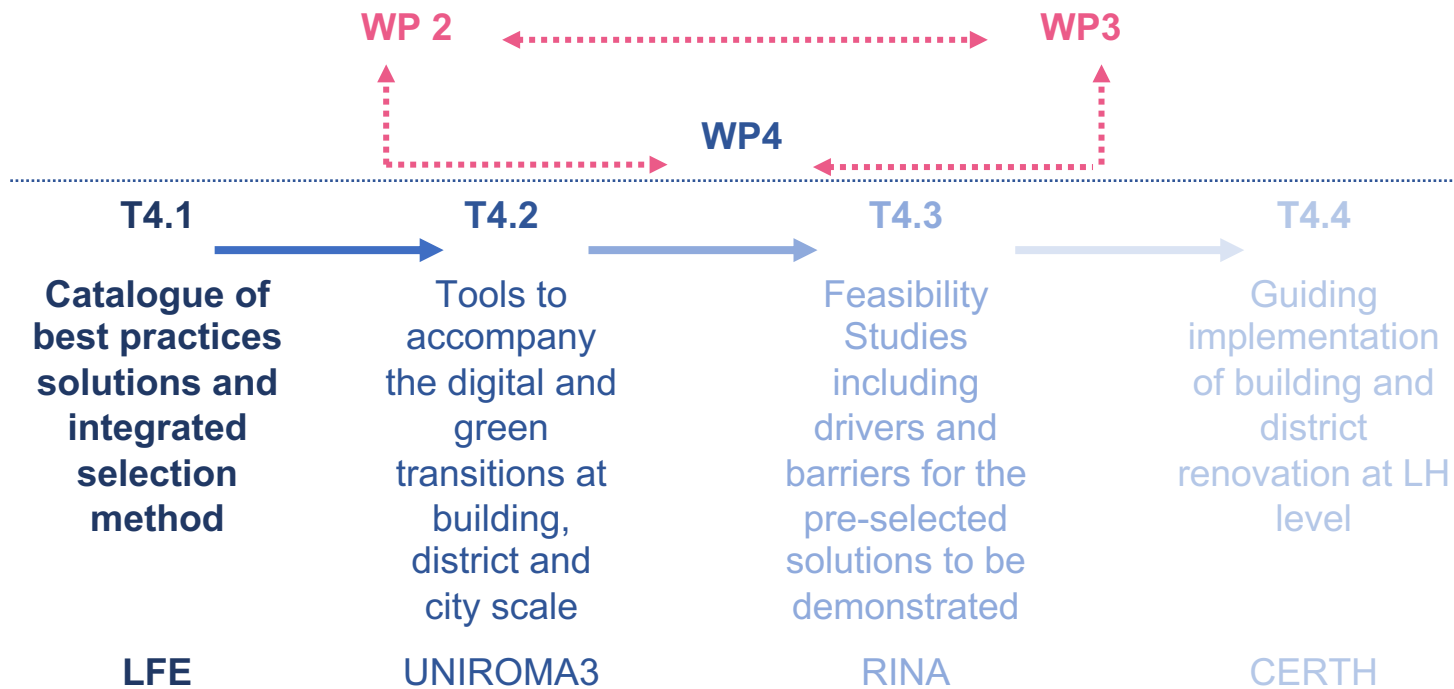
4/6

**1ST YEAR MISSION:
METHODOLOGICAL
FRAMEWORK**



WP4 BUILDING AND DISTRICT RENOVATION

- core pillar and foundational guideline in defining an EHHUR specific take on the NEB provided framework



EHHUR

- . scale
- . time
- . emotion
- . transformation

5/6

CATALOGUE OF BEST PRACTICES SOLUTIONS AND INTEGRATED SELECTION METHOD



THE D4.1 CATALOGUE

a story in 4 acts

-

intended to facilitate a systemic approach to building and city best practice technologies and solutions

D4.1

Catalogue of best practices solutions and integrated selection method

MINDSET	FOCUS ON	TOOL	BEYOND
<i>The Introductory part</i>	<i>Annex I</i>	<i>Annex II</i>	<i>Annex III</i>
the theoretical framework	the analysis of the joint questionnaire	the collection of 300 good practices examples	the selection of 30 Best practices case studies
knowledge	local specificity	main 'corpus'	inspiration

THE INTRODUCTORY PART

a multi-criteria analytical system
aiming to articulate
an EHHUR theoretical framework

- . A systemic approach on sustainability, aesthetics and inclusiveness
- . The path towards regenerative designing
- . The methodological approach
- . Best practices solutions
- . Beyond the EHHUR project

Photo: The Rivers of Sofia: Connecting Rivers and the City [ID: 140]



THE QUESTIONNAIRE

specificities, purposeness, and interconnectivities

Category	Sub-category	Question	Answer
Horizontal analysis	LH1	1. How do you describe the project?	
		2. What are the main objectives of the project?	
		3. How do you describe the process of the project?	
		4. How do you describe the results of the project?	
		5. How do you describe the impact of the project?	
		6. How do you describe the challenges of the project?	
		7. How do you describe the opportunities of the project?	
		8. How do you describe the future of the project?	
		9. How do you describe the role of the project?	
		10. How do you describe the value of the project?	

1.

Horizontal analysis

Vertical analysis

2.

LH1
Hoje Taastrup_DK

The major point of interest in this project is the identity shift of the neighbourhood. It would be interesting to see if/ how the technical part of the rehabilitation process is going to be used not as a core objective of the project, but as a tool for engaging with the new community to be set in place, and how this systemic dynamic is going to activate new forms of sense of belonging.

1.

LH1 concerns a housing association. The main purpose is to upgrade (energy and aesthetically) the building infrastructure.

The procedures have a double objective:
- on the one hand, the reduction of energy costs and the utilization of innovative clean energy production technologies
- on the other hand, the improvement of the tenants' living conditions, their awareness of social issues and the creation of groups that will act cooperatively for the benefit of society.

The main outcome of the project would be to find a way to provide identity to the area and neighbours through the energy community.

Understanding where they gather or which public spaces are most visited/used and engagement of citizens in Gadehavegard will make the difference for a project that might have an important repercussion in the whole area.

The high amount of public spaces accessible to everyone...

2.

Horizontal analysis



THE SELECTION OF 30

an EHHUR systemic storyline as inspiration for a NEB related way of thinking

CITY



SmartEcoCity Sonderborg's City ID: 000 Level of Sustainability: 4 NEE Values: 11.178 Level of ambition: 11.178 Level of ambition (optional): 11.178 L1 Match: No of L1: 17 21 BE/SDG/ENR/RES	Les Contours de Quartiers Durables ID: 000 Level of Sustainability: 5 NEE Values: 11.178 Level of ambition: 11.178 Level of ambition (optional): 11.178 L1 Match: No of L1: 17 21 BE/SDG/ENR/RES	Sewage heat as a sustainable source of energy ID: 000 Level of Sustainability: 5 NEE Values: 11.178 Level of ambition: 11.178 Level of ambition (optional): 11.178 L1 Match: No of L1: 17 21 BE/SDG/ENR/RES	Amsterdam rainproof ID: 000 Level of Sustainability: 5 NEE Values: 11.178 Level of ambition: 11.178 Level of ambition (optional): 11.178 L1 Match: No of L1: 17 21 BE/SDG/ENR/RES	The Rivers of Sofia: Connecting Rivers and the City ID: 000 Level of Sustainability: 5 NEE Values: 11.178 Level of ambition: 11.178 Level of ambition (optional): 11.178 L1 Match: No of L1: 17 21 BE/SDG/ENR/RES
---	--	---	---	---

NEIGHBORHOOD



REPLICATE Site Sun Substation ID: 000 Level of Sustainability: 5 NEE Values: 11.178 Level of ambition: 11.178 Level of ambition (optional): 11.178 L1 Match: No of L1: 17 21 BE/SDG/ENR/RES	Engrove Park in Copenhagen ID: 000 Level of Sustainability: 5 NEE Values: 11.178 Level of ambition: 11.178 Level of ambition (optional): 11.178 L1 Match: No of L1: 17 21 BE/SDG/ENR/RES	Jardin Joyeux La Maladière ID: 000 Level of Sustainability: 5 NEE Values: 11.178 Level of ambition: 11.178 Level of ambition (optional): 11.178 L1 Match: No of L1: 17 21 BE/SDG/ENR/RES	Gardens of the future ID: 000 Level of Sustainability: 5 NEE Values: 11.178 Level of ambition: 11.178 Level of ambition (optional): 11.178 L1 Match: No of L1: 17 21 BE/SDG/ENR/RES
---	--	--	---

STREET



Health Street ID: 000 Level of Sustainability: 5 NEE Values: 11.178 Level of ambition: 11.178 Level of ambition (optional): 11.178 L1 Match: No of L1: 17 21 BE/SDG/ENR/RES	Green Shades ID: 000 Level of Sustainability: 5 NEE Values: 11.178 Level of ambition: 11.178 Level of ambition (optional): 11.178 L1 Match: No of L1: 17 21 BE/SDG/ENR/RES	The 200 Foot Garden ID: 000 Level of Sustainability: 5 NEE Values: 11.178 Level of ambition: 11.178 Level of ambition (optional): 11.178 L1 Match: No of L1: 17 21 BE/SDG/ENR/RES
---	--	---

BUILDINGS



De Verwondering ID: 200 Level of Sustainability: 5 NEE Values: 11.178 Level of ambition: 11.178 Level of ambition (optional): 11.178 L1 Match: No of L1: 17 21 BE/SDG/ENR/RES	COOK's Studio ID: 200 Level of Sustainability: 5 NEE Values: 11.178 Level of ambition: 11.178 Level of ambition (optional): 11.178 L1 Match: No of L1: 17 21 BE/SDG/ENR/RES	Gleis 21 ID: 200 Level of Sustainability: 5 NEE Values: 11.178 Level of ambition: 11.178 Level of ambition (optional): 11.178 L1 Match: No of L1: 17 21 BE/SDG/ENR/RES	Maggie's Leeds ID: 200 Level of Sustainability: 5 NEE Values: 11.178 Level of ambition: 11.178 Level of ambition (optional): 11.178 L1 Match: No of L1: 17 21 BE/SDG/ENR/RES	Marion Fire Station ID: 200 Level of Sustainability: 5 NEE Values: 11.178 Level of ambition: 11.178 Level of ambition (optional): 11.178 L1 Match: No of L1: 17 21 BE/SDG/ENR/RES	Hitchcock Center for the Environment ID: 007 Level of Sustainability: 5 NEE Values: 11.178 Level of ambition: 11.178 Level of ambition (optional): 11.178 L1 Match: No of L1: 17 21 BE/SDG/ENR/RES
---	---	--	--	---	--

SYSTEMS



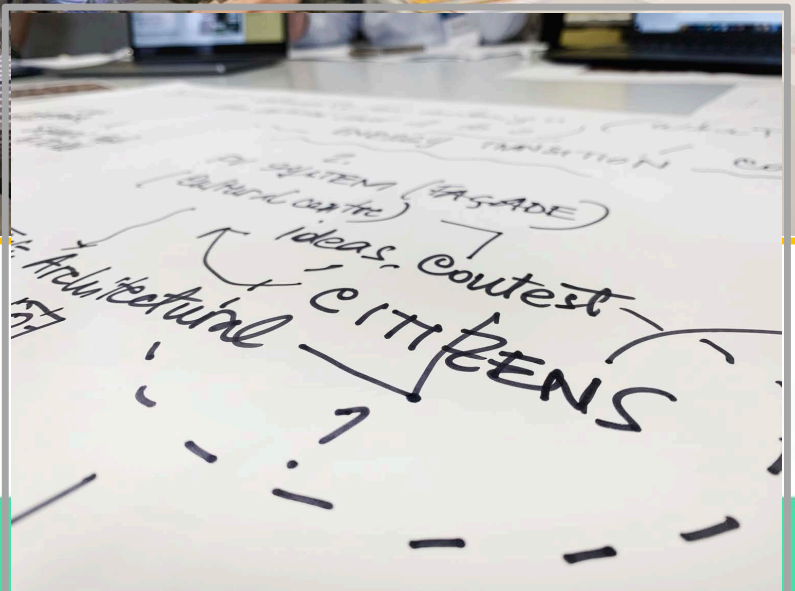
SolarLeak, Algae bio-reactive facade ID: 000 Level of Sustainability: 5 NEE Values: 11.178 Level of ambition: 11.178 Level of ambition (optional): 11.178 L1 Match: No of L1: 17 21 BE/SDG/ENR/RES	Carbon Super Block ID: 000 Level of Sustainability: 5 NEE Values: 11.178 Level of ambition: 11.178 Level of ambition (optional): 11.178 L1 Match: No of L1: 17 21 BE/SDG/ENR/RES	Co-Mix ID: 000 Level of Sustainability: 5 NEE Values: 11.178 Level of ambition: 11.178 Level of ambition (optional): 11.178 L1 Match: No of L1: 17 21 BE/SDG/ENR/RES	Xile's Rooftops: "floating" Wild Garden ID: 000 Level of Sustainability: 5 NEE Values: 11.178 Level of ambition: 11.178 Level of ambition (optional): 11.178 L1 Match: No of L1: 17 21 BE/SDG/ENR/RES	ERDEN PURE Walls ID: 000 Level of Sustainability: 5 NEE Values: 11.178 Level of ambition: 11.178 Level of ambition (optional): 11.178 L1 Match: No of L1: 17 21 BE/SDG/ENR/RES	NORDIC LAM GLULAM ID: 000 Level of Sustainability: 5 NEE Values: 11.178 Level of ambition: 11.178 Level of ambition (optional): 11.178 L1 Match: No of L1: 17 21 BE/SDG/ENR/RES
--	--	--	---	--	---



Aerobic Composters ID: 000 Level of Sustainability: 5 NEE Values: 11.178 Level of ambition: 11.178 Level of ambition (optional): 11.178 L1 Match: No of L1: 17 21 BE/SDG/ENR/RES	Bullitt Center ID: 001 Level of Sustainability: 5 NEE Values: 11.178 Level of ambition: 11.178 Level of ambition (optional): 11.178 L1 Match: No of L1: 17 21 BE/SDG/ENR/RES	vivhouse ID: 000 Level of Sustainability: 5 NEE Values: 11.178 Level of ambition: 11.178 Level of ambition (optional): 11.178 L1 Match: No of L1: 17 21 BE/SDG/ENR/RES	Clayworks ID: 000 Level of Sustainability: 5 NEE Values: 11.178 Level of ambition: 11.178 Level of ambition (optional): 11.178 L1 Match: No of L1: 17 21 BE/SDG/ENR/RES	Barcelona Living Building Science Wing ID: 000 Level of Sustainability: 5 NEE Values: 11.178 Level of ambition: 11.178 Level of ambition (optional): 11.178 L1 Match: No of L1: 17 21 BE/SDG/ENR/RES	The Phoenix sustainable design lab ID: 000 Level of Sustainability: 5 NEE Values: 11.178 Level of ambition: 11.178 Level of ambition (optional): 11.178 L1 Match: No of L1: 17 21 BE/SDG/ENR/RES	Fabrica dell'Arte / Air Factory ID: 000 Level of Sustainability: 5 NEE Values: 11.178 Level of ambition: 11.178 Level of ambition (optional): 11.178 L1 Match: No of L1: 17 21 BE/SDG/ENR/RES
--	--	--	---	--	--	---

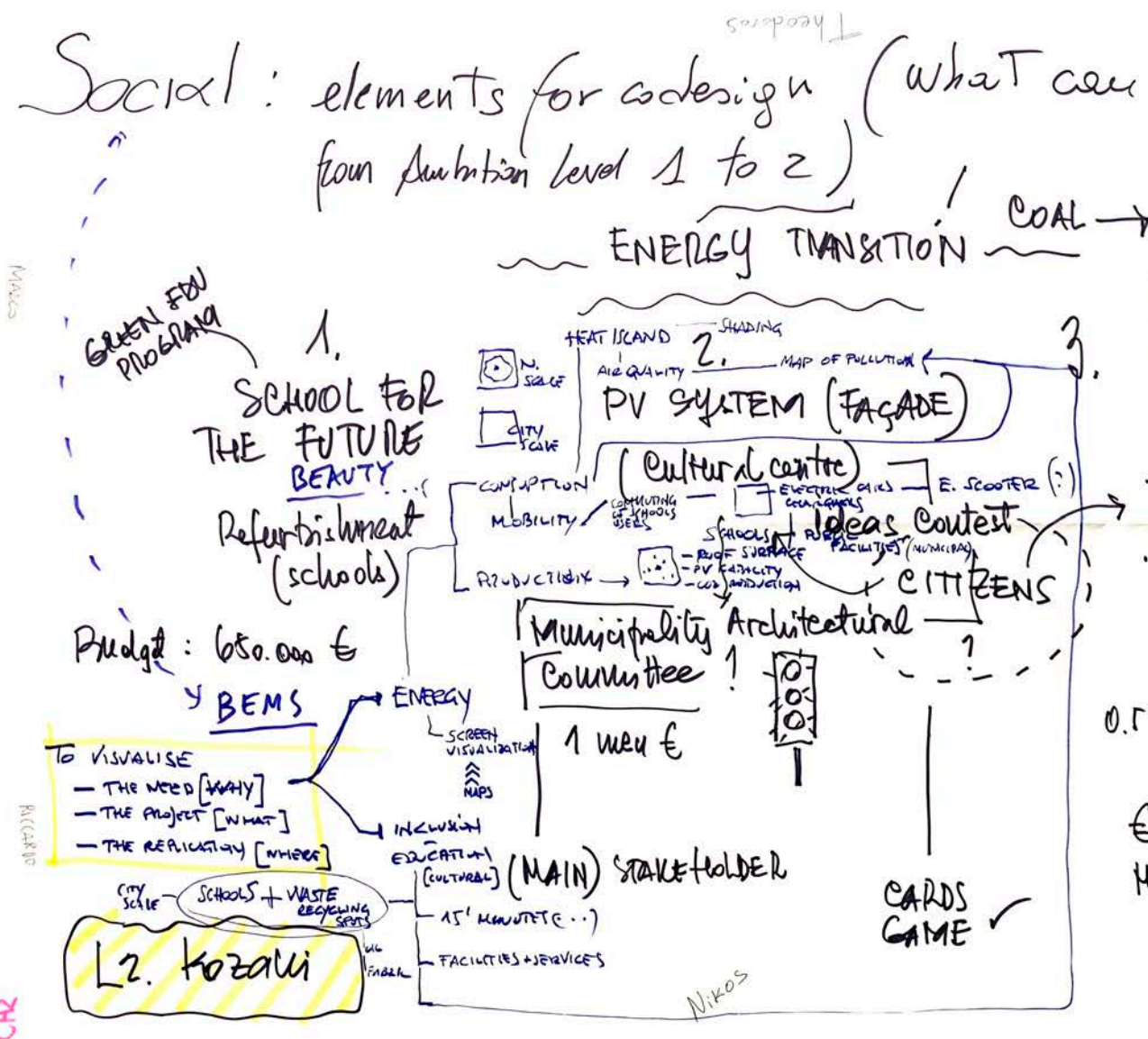


Photo: The 200 Foot Garden [ID: 238]



6/6

T4.2 TOOLS TO ACCOMPANY THE DIGITAL AND GREEN TRANSITIONS AT BUILDING, DISTRICT AND CITY SCALE



ENERGY DATA VISUALISATION

from co-designing to facilitation

- . **Finding common ground** - energy
- . **Tailoring custom-made systems** – bi-directional approach
- . **Create awareness** – data-driven change

train

guide

EDUCATION

support



CONSORTIUM



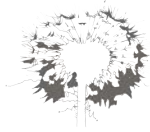
CONSORTIUM



CERTH
CENTRE FOR
RESEARCH & TECHNOLOGY
HELLAS

ICONS

RIMOND



**LIVING FUTURE
EUROPE**



**Høje-Taastrup
Kommune**



MEC
MILJØ- & ENERGICENTERET
HØJE-TAASTRUP



Solar Lightning



CIUBE
Innovation & Environment Cluster
Western Macedonia



**BLUE
SYNERGY**

KAMP



ZOERSEL



ZONNEWIND



AdE PORTO
AGÊNCIA DE ENERGIA DO PORTO

NEW
by EDP & CTG



ESPAÇO
MUNICIPAL

MAIN

spⁱ

Sociedade Portuguesa de Inovação



DemirEnerji



TARKEM
Türk Enerji Kurumu

BREZA



III



Sveučilište u Zagrebu
Fakultet strojarstva i brodogradnje

**ROMA
TRE**
UNIVERSITÀ DEGLI STUDI



EYES HEARTS HANDS
URBAN REVOLUTION

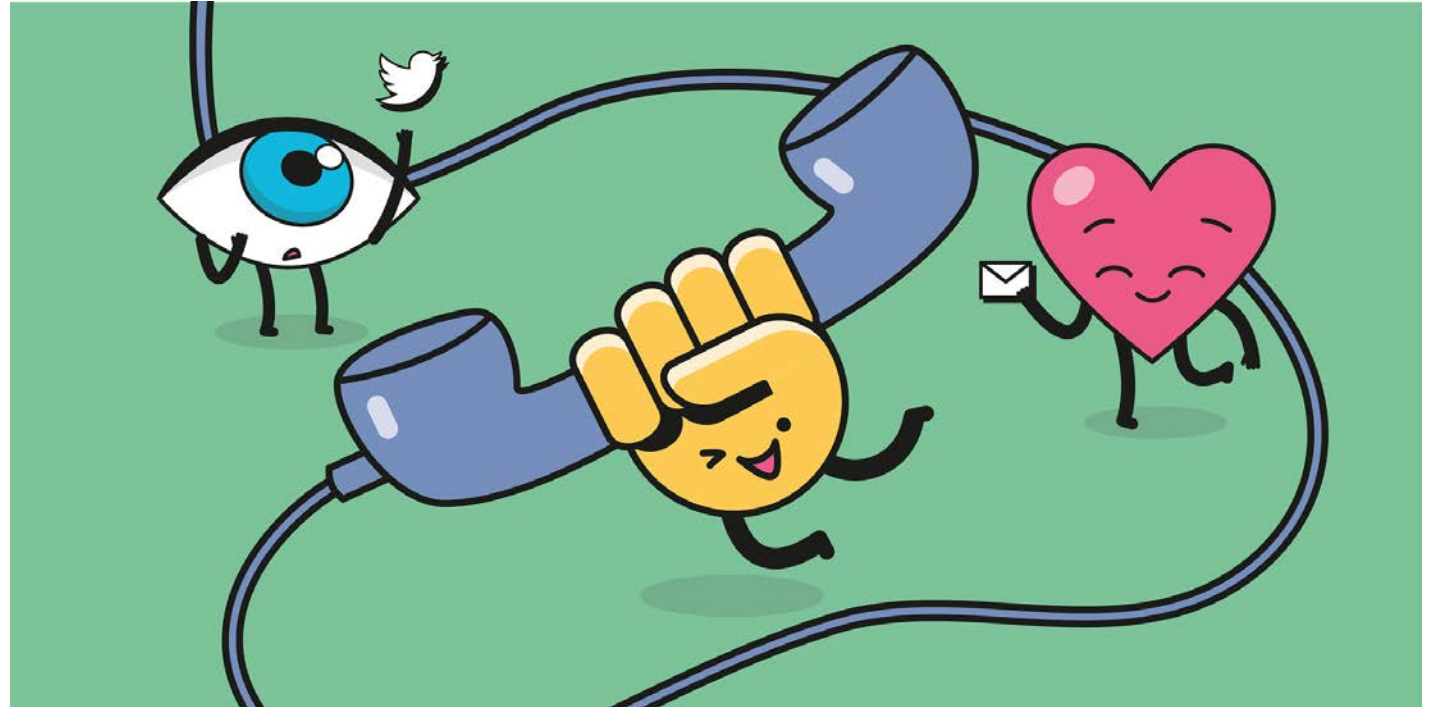
THANK YOU!

JOIN THE URBAN REVOLUTION

- Email: info@eyesheartshands.eu
- Twitter: @eyesheartshands
- LinkedIn: Eyes Hearts Hands

Visit our website:

eyesheartshands.eu



Funded by EU
Grant No. 101079948

Loredana STASISIN
Technical Expert / Living Future Europe

loredana.stasisin@living-future.eu