

The Alan Turing Institute

The Turing Way

Practitioners Hub

PMU Lunch & Learn: October 2023

Alexandra Araujo Alvarez



The Turing Way

An Open Source guide on Data Science.

*We involve and supports a **diverse community** to make research **reproducible, ethical, open and inclusive** for everyone.*



The Turing Way Guides



Reproducibility



Project Design



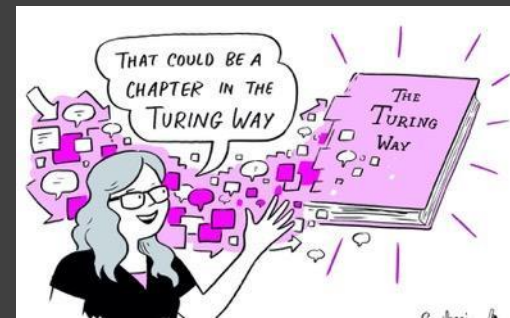
Communication



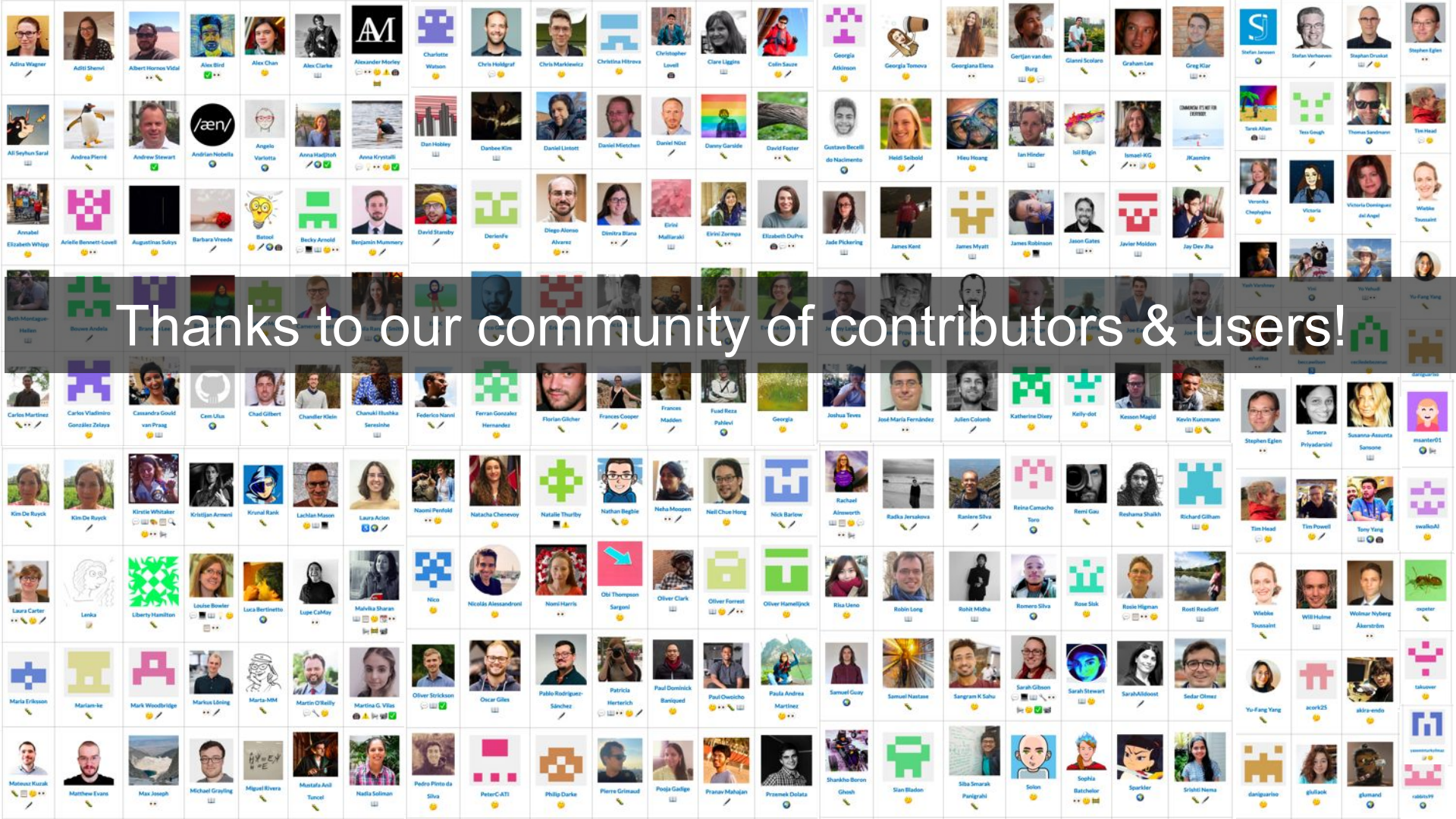
Collaboration



Ethical Research



Community Handbook



Thanks to our community of contributors & users!

Project Growth & Recognitions

- 4+ years, >260 Chapters, community resources
- 425+ contributors, 3500+ monthly users - supported by 20+ core members (governance)
- 2 awards and engagement with 25+ organisations
- Replication/extension by 3 Turing & 6+ external projects (e.g. ONS, UCL, Uni Oxford, LIBER: Association of European Research Libraries)





Book:
the-turing-way.netlify.app/

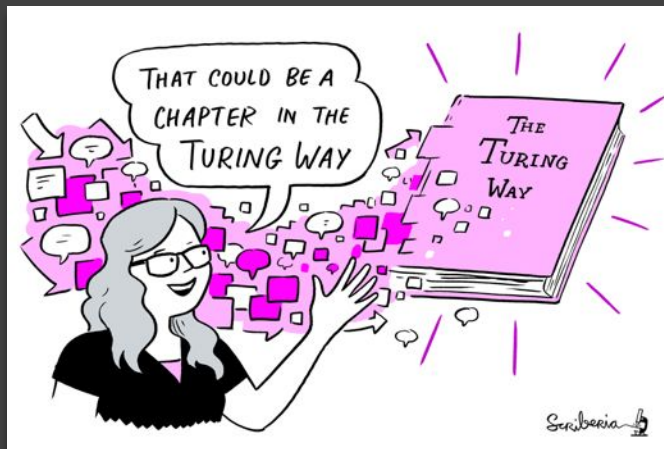
GitHub:
github.com/alan-turing-institute/the-turing-way

Twitter:
twitter.com/turingway

Email:
theturingway@gmail.com

CC-BY 4.0, *The Turing Way*

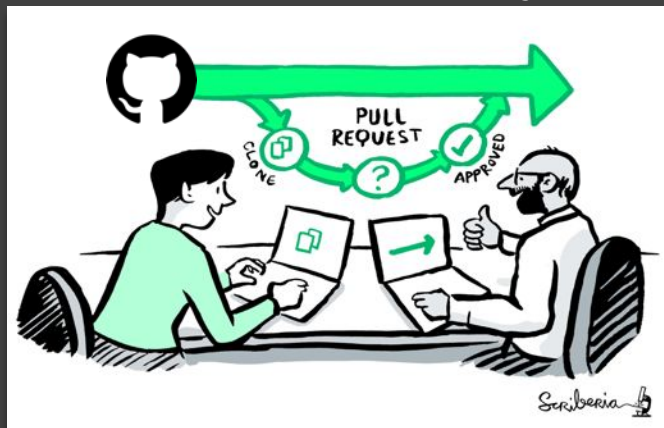
A Book



A Community



An Open Source Project



A Culture of Collaboration



Extending the impact through 'Practitioners Hub'

A forum for **cross-sector engagement**, knowledge exchange and strategic collaboration **with organisations** across academia, research, engineering systems, government, and healthcare **leading data science initiatives**.



Practitioners Hub's Overarching Goals

Accelerating the adoption of best practices in the partnering organisations

- Co-creation of case studies highlighting the **impacts of data science best practice**.
- Embed **community practices** to enable knowledge exchange and team science
- Foster a network of '**Experts in Residence**'



Practitioners Hub: Scale & Scope

Practitioners Hub **Inaugural Cohort June 2023 - December 2023**

Funded by:

- Phase 1: Ecosystem Leadership Programme (UKRI funded)
- Phase 2 and 3: BridgeAI* and additional fundraising

Project Phases:

Phase 1 (Oct 22 - May 23)	Scoping and onboarding the partners
Phase 2 (Jun 23 - Nov 23)	Custom resource, activity and engagement
Phase 3 (Dec 23 - Dec 26)	Future cohorts, scaling and sustainability

**BridgeAI ([Innovate UK KTN \(ktn-uk.org\)](https://www.innovateuk.org/ktn)) aims to help businesses in high growth sectors such as agriculture, construction, creative and transport industries, to harness the power of AI and unlock their full potential. The Practitioner Hub will extend the impact of The Turing Way community approaches and resources those sectors.*

Experts in Residence (EiR)



Practitioners Hub - Experts in Residence | The Alan Turing Institute



Experts in Residence (EiRs)

The
Alan Turing
Institute

- engage in the Hub around **open science, reproducibility and collaborative practices**
- co-create case studies **capturing the state of these practices** in their organisations
- exchange and adopt approaches from across different sectors to **advance these practices**
- Utilise **The Turing Way** to enable **bidirectional flow** of their knowledge in and beyond the Hub



Slide deck developed for The Turing Way Practitioners Hub. Photo taken on the EiR workshop on 27 July 2023

Practitioners Hub: 1st Half of the Cohort

Month 1 (June)

- Onboarding meeting with partners & cohort members represented by Experts (in Residence).
- Planning case studies with experts.
- Building roadmap and customised engagement and skill exchange plan.

Month 3 (August)

- First drafts of case studies with experts.
- Connecting cohort with the Turing, BridgeAI, open science resources & good practices across sectors.
- Working with experts in planning skill development & training opportunities for partner organisations.

Month 2 (July)

- Working with the Experts to capture impact of best practices in respective organisations and their sectors.
- Stakeholder and skill mapping with each partners.
- Facilitated planning of knowledge share (Fireside Chat, Book Dash or customised events) among cohort members.

Practitioners Hub: 2nd Half of the Cohort + future collaboration

Month 4

- Project-specific engagement from organisation
- Building and beginning the customised consulting, support and collaborative research
- Beginning the implementation of customised support (community, research application, open source, other shared priorities?)

Future

- Institutional investment in funding the engagement of Experts in Resident.
- Future collaboration in the Turing, BridgeAI and/or the Turing Institute.
- Document and report the collaborative work openly.

Month 5-6

- Continue the implementation of customised support (community, research application, open source, other shared priorities?)
- Assess organisational intent to continue engagement beyond the cohort.

Practitioners Hub Team & Roles



Kirstie Whitaker

TPS Programme Director,
The Turing Way Lead



Malvika Sharan

TPS Senior Researcher,
The Turing Way co-lead



**Alexandra
Araujo Alvarez**

Research Project Manager



Cami Rincón

TPS Research Application
Officer - RAM Team



Shane Conneely

Partnership Development
Lead - TPS

External Experts

- *Turing's Skills Team*
- *BridgeAI and Digital Catapult*
- *Technical Writer*
- *Case Study Liaisons...*

Project's Successes, barriers, learnings and opportunities

Successes:

- Signed **contracts for Experts in Residence** from June-December
- **Case Study Writing Framework** available at Zenodo:
<https://doi.org/10.5281/zenodo.10000713>
- 3 Case Study Drafts: **thanks to case study liaisons**, contributions and support

Project's Successes, barriers, learnings and opportunities

Barriers:

- **The Turing Way team lacked capacity.** PDRA position was not fulfilled.
- **Budget coordinations:** the project is funded by two different projects
- Budget limitations: **international subcontracting**

Project's Successes, barriers, learnings and opportunities

Learnings:

- Establish a recurring meeting space for the cohort's group meeting
- When working with cohorts, prioritise **interaction and reflection about processes**
- Provide a lot of spaces for **feedback**

Project's Successes, barriers, learnings and opportunities

Opportunities:

- Develop a **closer relationship with BridgeAI** partners, Digital Catapult, etc
- Collaborate with internal projects 'AI Ethics and Governance in Practice'
- Encourage long-term partnership with EiR organisations

Acknowledgements & Links

The
Alan Turing
Institute

- **Kirstie Whitaker, Malvika Sharan, Anne Lee Steele, Arielle Bennett** + many Turing Way Core Team and Turing's TPS team members
- **Technical writer and Case study liaisons:** Stuart Gillespie, Lucy Killoran, Vicky Hellon, Arielle Bennett
- **BridgeAI:** Dominica D'Arcangelo, Nicolas Guernion
- **Skills team:** Vera Matser, Sarah Nietopski
- **Book:** the-turing-way.netlify.com, **Twitter:** twitter.com/turingway
- **GitHub:** github.com/alan-turing-institute/the-turing-way
- Useful links & opportunities are listed here: bit.ly/turingway

