

## RESEARCH LETTER

10.1002/2016GL067679

## Key Points:

- Low cloud over the tropical North Atlantic is highly sensitive to SST
- Trade wind speed response to midlatitude SST anomaly is critical to understand tropical arm of AMO
- Models do not simulate the cloud and dust feedback and miss the tropical arm of AMO

## Correspondence to:

T. Yuan,  
tianle.yuan@nasa.gov

## Citation:

Yuan, T., L. Oreopoulos, M. Zelinka, H. Yu, J. R. Norris, M. Chin, S. Platnick, and K. Meyer (2016), Positive low cloud and dust feedbacks amplify tropical North Atlantic Multidecadal Oscillation, *Geophys. Res. Lett.*, 43, 1349–1356, doi:10.1002/2016GL067679.

Received 6 JAN 2016

Accepted 14 JAN 2016

Accepted article online 16 JAN 2016

Published online 4 FEB 2016

Corrected 22 APR 2016

This article was corrected on 22 APR 2016. See the end of the full text for details.

©2016. The Authors.

This is an open access article under the terms of the Creative Commons Attribution-NonCommercial-NoDerivs License, which permits use and distribution in any medium, provided the original work is properly cited, the use is non-commercial and no modifications or adaptations are made.

## Positive low cloud and dust feedbacks amplify tropical North Atlantic Multidecadal Oscillation

Tianle Yuan<sup>1,2</sup>, Lazaros Oreopoulos<sup>2</sup>, Mark Zelinka<sup>3</sup>, Hongbin Yu<sup>2,4</sup>, Joel R. Norris<sup>5</sup>, Mian Chin<sup>2</sup>, Steven Platnick<sup>2</sup>, and Kerry Meyer<sup>2,6</sup>

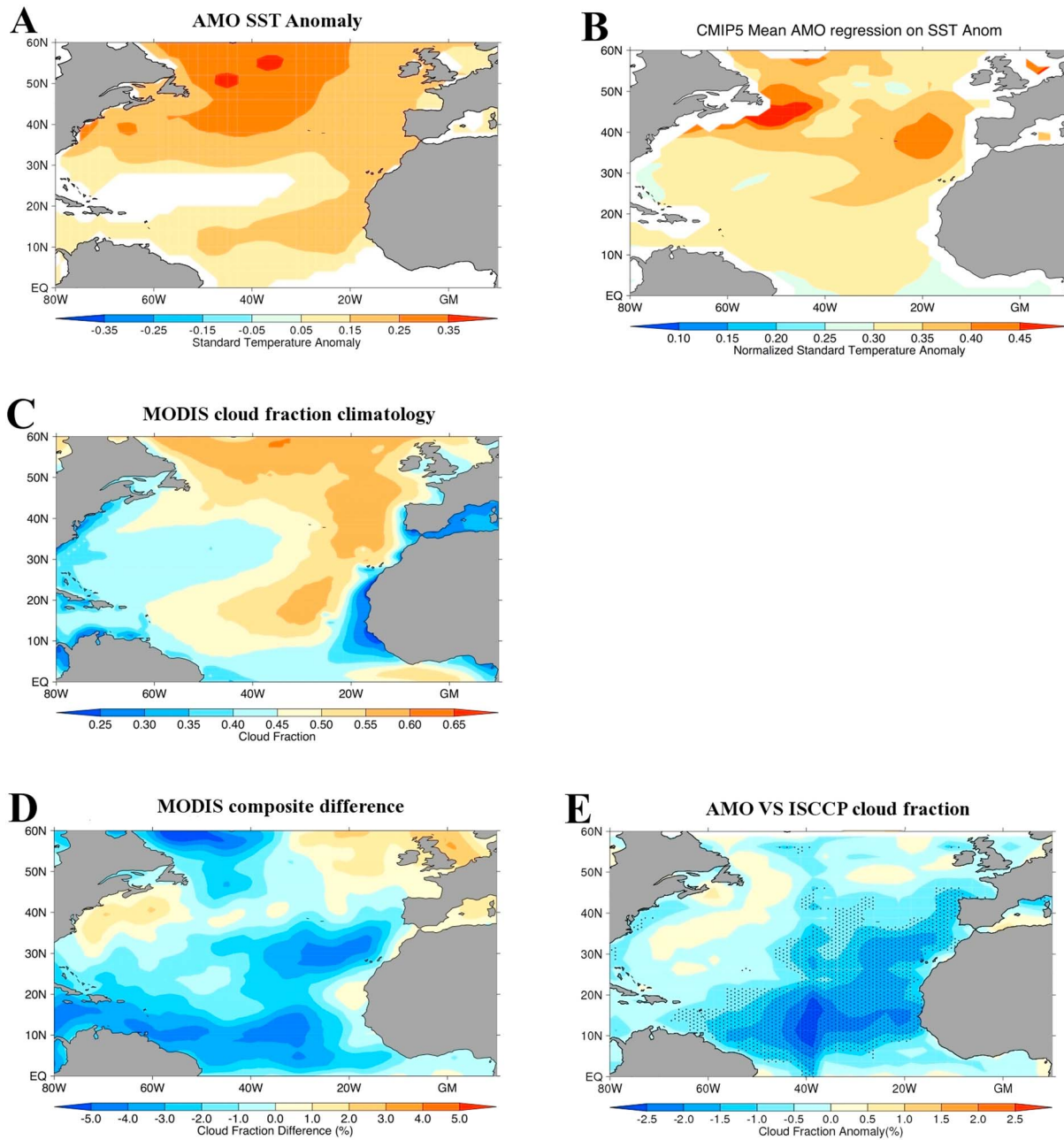
<sup>1</sup>Joint Center for Earth Systems Technology, University of Maryland, Baltimore County, Catonsville, Maryland, USA, <sup>2</sup>Earth Science Directorate, NASA Goddard Space Flight Center, Greenbelt, Maryland, USA, <sup>3</sup>Program for Climate Modeling Diagnosis and Intercomparison, Lawrence Livermore National Laboratory, Livermore, California, USA, <sup>4</sup>Earth System Science Interdisciplinary Center, University of Maryland, College Park, Maryland, USA, <sup>5</sup>Scripps Institute of Oceanography, University of California San Diego, La Jolla, California, USA, <sup>6</sup>Goddard Earth Sciences Technology and Research, Universities Space Research Association, Columbia, Maryland, USA

**Abstract** The Atlantic Multidecadal Oscillation (AMO) is characterized by a horseshoe pattern of sea surface temperature (SST) anomalies and has a wide range of climatic impacts. While the tropical arm of AMO is responsible for many of these impacts, it is either too weak or completely absent in many climate model simulations. Here we show, using both observational and model evidence, that the radiative effect of positive low cloud and dust feedbacks is strong enough to generate the tropical arm of AMO, with the low cloud feedback more dominant. The feedbacks can be understood in a consistent dynamical framework: weakened tropical trade wind speed in response to a warm middle latitude SST anomaly reduces dust loading and low cloud fraction over the tropical Atlantic, which warms the tropical North Atlantic SST. Together they contribute to the appearance of the tropical arm of AMO. Most current climate models miss both the critical wind speed response and two positive feedbacks though realistic simulations of them may be essential for many climatic studies related to the AMO.

### 1. Introduction

The North Atlantic sea surface temperature (SST) undergoes coherent multidecadal oscillations with a period of about 60–80 years, known as the Atlantic Multidecadal Oscillation (AMO) (also referred to as the Atlantic Multidecadal Variability) [Kerr, 2000]. The AMO index can be computed as the 10 year running mean of linearly detrended North Atlantic SST anomalies [Enfield et al., 2001] (see SOM and Figure S1 in the supporting information) and the SST expression of a warm phase of AMO is shown in Figure 1. It is characterized by a horseshoe pattern with two arms: one south of Greenland and the other in the tropical North Atlantic. The tropical arm of North Atlantic SST anomalies is responsible for many climatic impacts on neighboring and remote regions through teleconnection including Atlantic hurricanes, North American, and North African climate [Knight et al., 2006; Zhang and Delworth, 2006; Sutton and Hodson, 2007]. The low frequency nature of AMO is an important source of predictability for decadal climate predictions using coupled models [Meehl et al., 2014]. Improved understanding of the AMO helps to better attribute signals of anthropogenic climate change [Bindoff et al., 2013]. Understanding the processes that give rise to the AMO is thus of great scientific and societal interest.

However, the tropical arm of North Atlantic SST anomalies is often significantly underestimated or entirely absent (Figure 1b) in the models of the Fifth Coupled Model Intercomparison Project (CMIP5) despite its importance and an often correctly simulated midlatitude arm [Delworth et al., 2007; Kavvada et al., 2013; Ba et al., 2014; Martin et al., 2014]. Observational analyses suggest that the focus of North Atlantic SST anomalies is in the midlatitudes during the mature stage of AMO and SST anomalies subsequently propagate into the tropics [Guan and Nigam, 2009; Kavvada et al., 2013; Hodson et al., 2014]. Recent studies suggest that ocean-atmosphere coupled processes are needed to propagate SST anomalies from midlatitudes to south of 34°N [Zhang and Zhang, 2015]. Regardless of the trigger mechanism in the midlatitudes, the inability to propagate the midlatitude anomaly into the tropics is a common shortcoming in climate models, which may indicate shortcomings in the representation of crucial model processes. Anthropogenic aerosol radiative forcing has been proposed as a driver for the tropical arm of SST anomalies [Mann and Emanuel, 2006; Delworth et al., 2007; Booth et al., 2012] and analyses of model simulations seem to support the role of



**Figure 1.** Spatial patterns of the Atlantic Multidecadal Oscillation from (a) observation and (b) model mean, (c) MODIS low cloud fraction climatology, (d) composite difference in MODIS low cloud fraction between high and low AMO index years, and regression of ISCCP low cloud fraction against AMO index. The AMO index is defined as the detrended areal weighted North Atlantic SST anomaly averaged over the region [0 ~ 60 N, 80 W ~ 10 E]. The spatial pattern (a) of AMO is defined as the regression of the North Atlantic SST against the AMO index scaled by one standard deviation of the AMO index. For models (b), each spatial pattern is first normalized before averaging. MODIS low cloud fraction climatology (c) is an average of Terra and Aqua with low clouds defined as those with cloud top pressure greater than 600 hPa. MODIS composite difference (d) is between the average of top (2003, 2004, and 2008) and bottom (2007, 2009, and 2011) AMO years during MODIS era. Stippled areas in Figure 1e indicate that correlation is statistically significant at 95% level; the spatial pattern is calculated in the same way as Figure 1a except the AMO index time series during the ISCCP period is normalized before regression.

aerosols and clouds [Martin *et al.*, 2014], but considerable doubts remain regarding its magnitude and its consistency with observed ocean heat content, spatial pattern of SST, and surface salinity [Zhang *et al.*, 2013].

Here we propose that two positive feedback mechanisms, one involving low clouds and one involving dust, may be responsible for amplifying the tropical arm of the AMO. We assess their representation in current climate models by examining the recent AMO phase switch within the satellite era. Since early 1980s, tropical

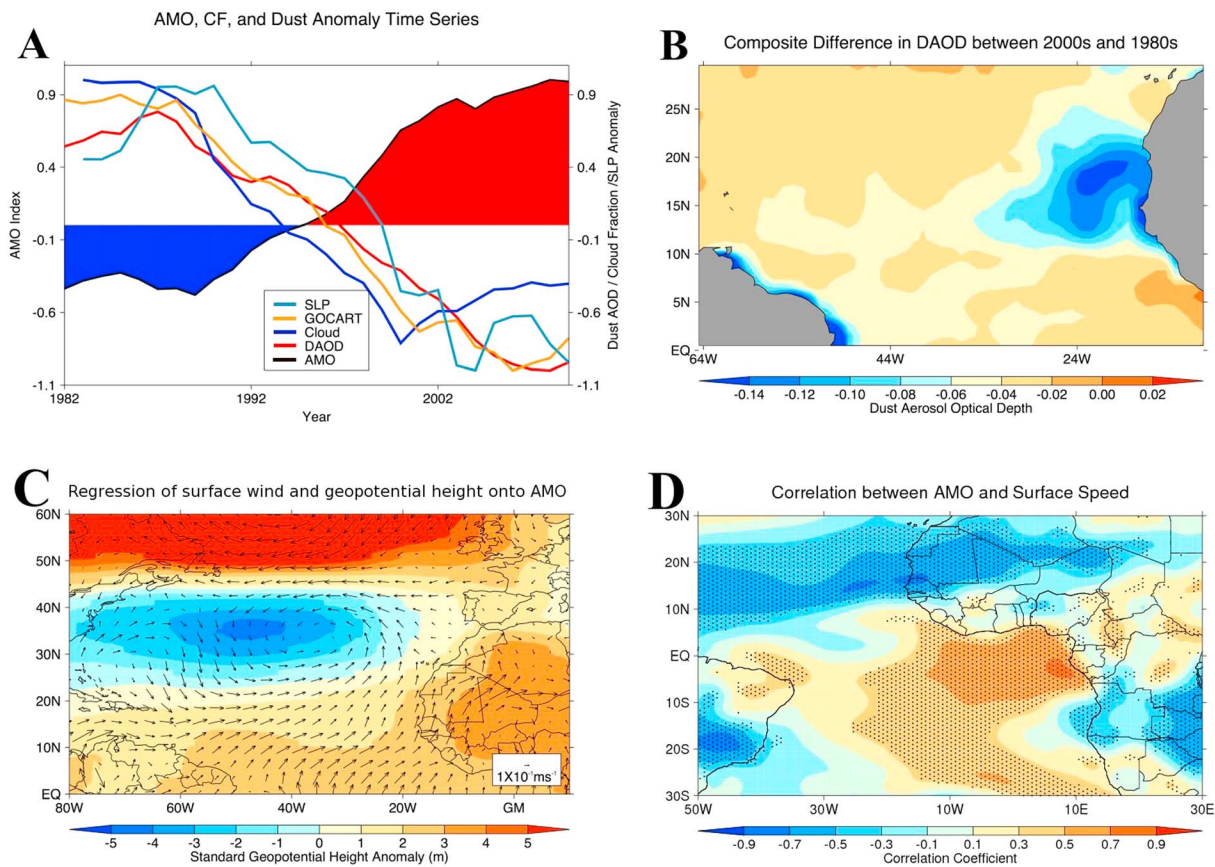
North Atlantic SST has increased at a fast rate of nearly 0.2 C/decade as AMO switched from a negative to a positive phase. Because ocean variability is of much lower frequency than atmospheric variability, we assume that on multidecadal time scales, the ocean is the slow driver and fast atmospheric processes are responses/feedbacks. Our investigation uses satellite data as well as other observational and modeling data (see SOM for details).

Figure 1c shows the climatology of maritime low cloud fraction from two Moderate Resolution Imaging Spectrometer (MODIS) instruments (2002–2013) on both the Aqua and Terra satellites [Platnick *et al.*, 2003]. The spatial pattern bears close resemblance to the pattern of the SST anomaly associated with AMO (Figure 1a): a maximum across the midlatitude North Atlantic from east of the Canadian coast to west of the Iberian Peninsula and a secondary maximum in the tropics west of the African continent. Composite analyses for MODIS and International Satellite Cloud Climatology Project (ISCCP, 1982–2009) periods suggest that in both data sets low cloud fraction generally decreases with increasing AMO index (Figures 1c, S2, and S3). The decrease is pronounced in the tropical North Atlantic downwind of West African continent, namely, the vicinity of the tropical arms of AMO and low cloud fraction. During the MODIS period, annual mean low cloud fraction in this area decreases by 2–4% on average for the 3 years with the highest AMO indices compared to the 3 years with the lowest (Figure 1d). For the longer ISCCP record, the tropical North Atlantic low cloud fraction is smaller by 3 to 8% in the 2000s (positive phase of AMO) than in the 1980s (negative phase of AMO) depending on location (Figure S2). The time series of annual low cloud fraction anomaly averaged over the tropical arm region is strongly anticorrelated with annual AMO index during the ISCCP period ( $r = -0.68$ ; Figures 1e and 2a). When AMO switches from a negative phase to a positive phase in the mid-1990s, the low cloud fraction anomaly transitions into a negative regime around the same time (Figure 2a).

A regression of low cloud fraction onto AMO index measures the rate of low cloud fraction decrease with positive AMO index. Rates from both cloud data sets are about 2% of low cloud fraction anomaly per one standard deviation of normalized AMO index during MODIS and ISCCP periods, or about  $-10\% \text{ K}^{-1}$ . Regressions of MODIS and ISCCP cloud fraction against AMO index show quite similar patterns with a pronounced peak in the tropical North Atlantic (Figures 1 and S3). The similarity is remarkable because sampling, sensor characteristics, and algorithms used for MODIS and ISCCP are all different, and the phase and variability of AMO are also quite different for the time periods covered by the two data sets. The consistency and sensitivity thus indicate a robust and strong low cloud response to underlying tropical North Atlantic SST.

The sensitivity of low cloud fraction to SST in this region is consistent with our physical understanding. The climatological SST over the tropical North Atlantic, where cloud fraction sensitivity peaks, is warmer than typical subtropical stratocumulus dominated regions and cooler than tropical trade cumulus dominated regions [Teixeira *et al.*, 2011]. In this transitional cloud regime, an increase in SST tends to decrease the inversion strength, increase entrainment mixing, and reduce cloud fraction [Bretherton *et al.*, 2013; Qu *et al.*, 2014]. Physically consistent changes in other meteorological variables such as sea level pressure and subsidence are also associated with the shift in SST and low cloud fraction [Clement *et al.*, 2009]. For example, the increasing tropical North Atlantic SST in this region from the 1980s to 2000s was accompanied by lower sea level pressure and weaker trade winds, which are consistent with reduced low cloud fraction (Figure 2a).

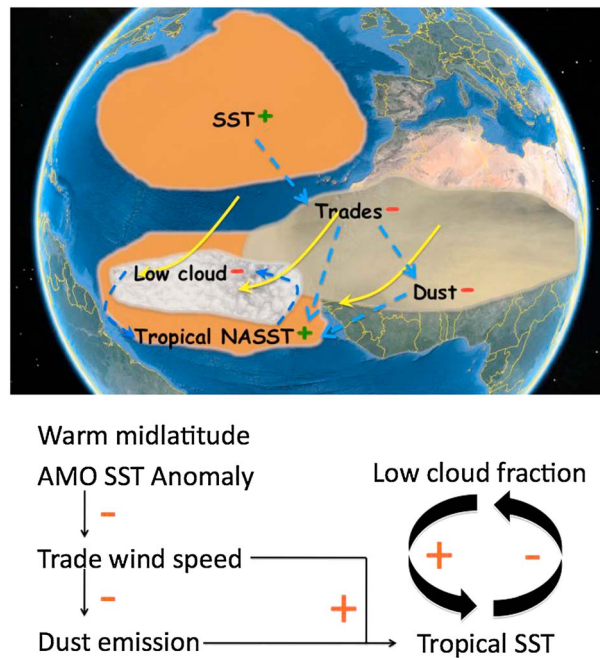
The low cloud fraction reduction associated with a positive AMO exerts significant radiative impact on the tropical North Atlantic SST because low clouds have a high net surface cooling efficiency of roughly  $1 \text{ Wm}^{-2}$  per percent change of cloud fraction [Klein and Hartmann, 1993]. Using this efficiency, we estimate that the low cloud fraction reduction in the 3 years with the highest AMO index during the MODIS period increases the net surface radiative heating by 2–4  $\text{Wm}^{-2}$  compared to the 3 years of the lowest AMO index. Similarly, an increase of surface radiative flux by 3–8  $\text{Wm}^{-2}$  in the tropical North Atlantic is expected due to the reduction in low cloud fraction indicated by ISCCP since the 1980s. Such estimates are consistent with concurrent satellite-based radiative flux estimates during the MODIS era (Figures S5 and S6). Considering only the change in the surface energy budget due to low clouds [Clement *et al.*, 2009], the anomalous cloud radiative effect is sufficient to alter SST by a few tenths of a degree, enough to account for a large portion of AMO related SST variation [Sutton and Hodson, 2005; Booth *et al.*, 2012]. Taken together, these results illustrate a potentially strong positive feedback between low clouds and SST on multidecadal time scales in the tropical North Atlantic: More solar radiation is absorbed by the sea surface due to decreased cloud fraction, which helps to maintain and amplify warm SST anomalies associated with the AMO and vice versa.



**Figure 2.** (a) Normalized time series of AMO index, dust aerosol optical depth (AOD), ISCCP low cloud fraction, Modern Era Retrospective analysis for Research and Applications (MERRA) sea level pressure, and GOCART modeled dust AOD from 1982 to 2009. All variables except AMO index are averaged over the tropical Atlantic (0°–20°N, 60°W ~ 20°W). Normalization is achieved by dividing each time series by its maximum absolute value. (b) Dust AOD composite difference between the 2000s and the 1980s. (c) Same as Figure 1a, but for anomalies of MERRA surface wind vector and 700 mb geopotential height (shaded). (d) Correlation coefficient between AMO index and MERRA near surface (10 m) wind speed. North of about 10°N, trade wind is weaker with a positive AMO phase and the opposite is true for the area to the south, which agrees well with the theory [Chiang and Friedman, 2012]. Stippled areas indicate places where correlation is statistically significant at the 95% level.

Aerosols are another factor that affects SST. Dust from North Africa is the dominant aerosol type over the tropical North Atlantic and it modulates the surface energy balance and hence SST [Evan et al., 2009]. As shown in Figure 2a, dust loading over the tropical North Atlantic, both observed by satellites [Evan and Mukhopadhyay, 2010] and modeled by the Goddard Chemistry Aerosol Radiation Transport (GOCART) [Chin et al., 2014], has decreased from 1982 to 2009. The decrease in dust loading is highly correlated with the increase in AMO index and matches the timing of regime change during the mid-1990s rather well. Both correlations are statistically significant ( $p < 0.01$ ). Longer dust records, extending back to 1950s and 1960s, also support this relationship (Figure S4). The decrease of dust optical depth since early 1980s (Figure 2b) has been estimated to have increased the downwelling surface radiative flux by up to  $1-2\text{Wm}^{-2}$ , thereby potentially increasing the tropical North Atlantic SST by up to a few tenths of a degree [Foltz and McPhaden, 2008; Evan et al., 2009; Mahowald et al., 2010]. Thus, the negative correlation between the tropical North Atlantic dust loading and North Atlantic SST [Wang et al., 2012; Chin et al., 2014; Ridley et al., 2014] suggests an additional positive feedback: smaller dust loading during a positive AMO phase amplifies the tropical North Atlantic SST warming.

What are the coupled processes that lead to the observed positive feedbacks associated with low clouds and dust? A credible framework emerges from our understanding of how extratropical forcing affects tropical climate [see Chiang and Friedman, 2012, and references therein]. A positive SST anomaly in the extratropics, e.g., the midlatitude arm of AMO, generates an anomalous local cyclonic circulation in the atmosphere [Kushnir and Held, 1996]. Through ocean advection, water vapor-evaporation- SST (WES) feedback [Xie and Philander, 1994] and weakening of ocean upwelling, warm SST anomalies expand to the southern and south-eastern edge of the cyclone and extend to lower latitudes. Such anomalous circulation reduces the speed of



**Figure 3.** (top) A schematic and (bottom) flow diagram illustrating the proposed feedbacks and related processes. Warm SST anomaly in the North Atlantic introduces a cyclonic anomaly, which weakens trade winds. Weaker trade winds reduce dust emission over the Sahara and suppress dust transport toward the tropical Atlantic. They also contribute to reduce low cloud fraction over the tropical North Atlantic. Both responses yield warmer tropical North Atlantic SST.

(Figures 2c and 2d). Indeed, surface wind speed is negatively correlated with AMO on multidecadal scales over these regions (Figure 2d). Decreased wind speeds suppress dust emission in source regions and reduce transport to the tropical ocean because of the anomalous onshore flow (Figure 2c) [McGee *et al.*, 2010; Chin *et al.*, 2014; Ridley *et al.*, 2014], which then reduces overall dust radiative cooling of the sea surface, closing a positive feedback loop. Reduced trade wind speed weakens ocean upwelling and reduces evaporation, which increases tropical SST that reduces low cloud fraction and therefore closes the positive low cloud feedback loop [Qu *et al.*, 2014] (Figure 3).

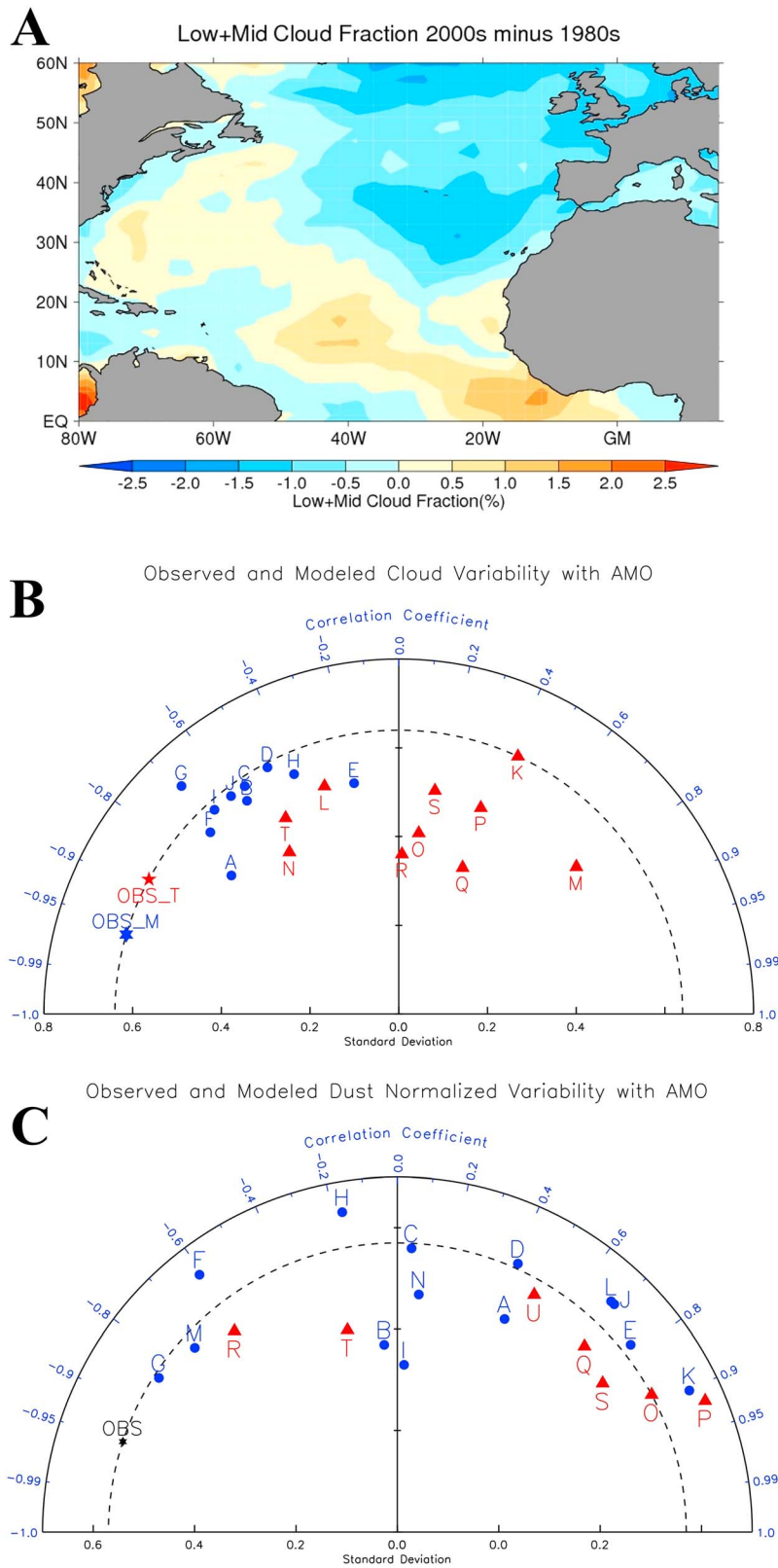
How well do the latest CMIP5 models reproduce these feedback processes? For cloud feedback evaluation we considered the low cloud response separately averaged over both the midlatitude arm and the tropical arm of the AMO (Figure 4a). Figure 4a shows that on average model simulations driven by observed SST fields and other observed boundary conditions (i.e., Atmospheric Model Intercomparison Project (AMIP) style experiments) show an increase in low cloud fraction in the tropical North Atlantic, opposite to observations, while correctly simulate a decrease in the midlatitudes. Indeed, only a couple of models qualitatively reproduce multidecadal low cloud temporal variability (Figures 4b and S10) in the tropics, while low cloud changes from most models are actually of opposite sign. One of the bright exceptions is CESM-CAM5, which has an updated low cloud scheme [Bretherton and Park, 2009], and performs the best in this regard.

Regarding the dust feedback, most model runs do not qualitatively reproduce the sign of dust change. Even when they do, the magnitude of absolute change is substantially underestimated, which is a common issue [Evan *et al.*, 2014]. On the contrary, off-line chemical transport models [Chin *et al.*, 2014; Ridley *et al.*, 2014] forced by reanalysis data can accurately reproduce the dust change. This perhaps indicates that shortcomings are present in the modeled dynamical response to SST in CMIP5 models. Indeed, our examination of results from AMIP style runs shows no clear indication of improved performance either in terms of dust response or surface wind speed response (Figures 4c, S8, and S9).

It is therefore reasonable to suggest that an important cause of the models' shortcoming is rooted in the simulation of tropical trade wind speed response to SST anomalies because the wind speed response is

northeasterly trade winds in the tropics, which decreases dust emission and dust loading over the tropical North Atlantic (Figure 3); at the same time, positive SST anomalies amplify through decreasing low cloud fraction over the Tropical North Atlantic. The critical link in this chain of events involves the trade wind speed and its response to the middle latitude SST anomaly because trade wind speed can affect both tropical SST and associated low clouds, and modulate dust emission and transport (Figure 3).

A regression of surface wind and 700 mb geopotential height on AMO index between 1982 and 2009 manifests this conceptual picture. It clearly shows that in association with a positive AMO phase, an anomalous low-pressure system develops in the middle of North Atlantic. The anomalous southwesterlies to the south of the low-pressure system act to weaken the tropical northeasterly trade winds both over ocean and over the dust source regions



**Figure 4.** (a) Multimodel mean of composite difference in low cloud fraction between 2000s and 1980s. (b) A diagram showing correlation and standard deviation of normalized cloud fraction anomaly time series over midlatitude (blue) and tropical (red) arms of AMO using model results. Observed values are shown as stars with corresponding colors. (c) Similar to Figure 4b, but for normalized tropical Atlantic dust loading in models for coupled, in blue, and AMIP style, in red, runs.

critical for both feedback mechanisms. Failure to correctly capture the trade wind speed response to SST anomalies prevent two positive feedbacks to operate and the lack of radiative impact from two positive feedbacks deprives models of mechanisms to generate the observed tropical arm of AMO. This interpretation is corroborated by other analyses of modeling results [Kang *et al.*, 2009; Zhang *et al.*, 2010; Hodson *et al.*, 2014; Martin *et al.*, 2014] and the two feedback mechanisms together with the wind response offer a viable process with which the middle latitude SST anomalies can propagate into the tropics. The lack of trade wind response to AMO may be related to the fact that modeled North Atlantic Oscillation response to AMO is not correctly simulated [Omrani *et al.*, 2014].

While evidence and mechanisms presented here are physically consistent, we recognize that they do not constitute causal proof. Unfortunately, because current models lack the ingredients to capture the wind response and two positive feedback mechanisms, we could not use numerical experiments to model the full causal chain. Improved model physics (e.g., cloud physics in CESM-CAM5) and coupled dynamics may make such experiments possible in the near future. We also want to note that while the importance of dust and cloud feedbacks are highlighted here, other factors may also play a role, such as the impact of wind speed change on WES, the influence of Sahel precipitation and vegetation on dust emission, model biases in mean states such as SST [Wang *et al.*, 2014] and the strength of aerosol indirect effects [Yuan *et al.*, 2011; Booth *et al.*, 2012; Doherty and Evan, 2014], which, in our opinion, are not the primary cause of cloud fraction change (see discussion in Zhang *et al.* [2013] and the SOM).

Still, the framework proposed here links variability of North Atlantic SST, dust loading and marine low clouds together through large-scale coupled ocean-atmospheric dynamics (Figure 3), and is useful for a host of research topics. For example, the positive dust feedback could explain the drastic increase of Saharan dust emission when the North Atlantic was abnormally cold [McGee *et al.*, 2013; Murphy *et al.*, 2014]. It also may offer clues to how changed dust emission may fertilize the ocean, alter biological productivity, and thus perturb CO<sub>2</sub> sequestration by the ocean as observed in paleoclimate records [Martinez-Garcia *et al.*, 2011]. The radiative impact by both positive feedbacks on the top-of-atmosphere energy balance is important to understand the response of tropical precipitation and circulation to both AMO and other extratropical forcings (e.g., ice cover change) [Kang *et al.*, 2008; Zhang *et al.*, 2010; Frierson *et al.*, 2013]. In addition, to fully realize decadal predictability provided by nature, our results suggest that efforts are needed for improving modeled atmospheric response to North Atlantic SST anomalies and associated cloud and dust feedbacks. Finally, the robust and fast low cloud feedback, if consistently operating across ocean basins [Clement *et al.*, 2009], is a powerful amplifier for SST anomalies regardless of its source, be it anthropogenic global warming, aerosol cooling, or natural variability. The lack of strong positive cloud feedback in many models might partly explain why, despite the ability to simulate the modern secular warming trend, modeled multidecadal fluctuations around this trend are too weak compared to observations [Ting *et al.*, 2009].

#### Acknowledgments

We acknowledge the funding support from NASA's MAP program. All the data used in this study are based on publicly available data sets. The contribution of MZ was performed under the auspices of the U.S. Department of Energy by Lawrence Livermore National Laboratory under Contract DE-AC52-07NA27344 and was supported by the Regional and Global Climate Modeling Program of the United States Department of Energy's Office of Science.

#### References

- Ba, J., et al. (2014), A multi-model comparison of Atlantic multidecadal variability, *Clim. Dyn.*, 43(9-10), 2333–2348.
- Bindoff, N. L., et al. (2013), Detection and attribution of climate change: From global to regional, in *Climate Change 2013: The Physical Science Basis. Contribution of Working Group I to the Fifth Assessment Report of the Intergovernmental Panel on Climate Change*, edited by T. F. Stocker et al., pp. 867–952, Cambridge Univ. Press, doi:10.1017/CBO9781107415324.022.
- Booth, B. B. B., N. J. Dunstone, P. R. Halloran, T. Andrews, and N. Bellouin (2012), Aerosols implicated as a prime driver of twentieth-century North Atlantic climate variability, *Nature*, 484(7393), 228–232.
- Bretherton, C. S., and S. Park (2009), A new moist turbulence parameterization in the Community Atmosphere Model, *J. Clim.*, 22(12), 3422–3448, doi:10.1175/2008JCLI2556.1.
- Bretherton, C. S., P. N. Blossey, and C. R. Jones (2013), Mechanisms of marine low cloud sensitivity to idealized climate perturbations: A single-LES exploration extending the CGILS cases, *J. Adv. Model. Earth Syst.*, 5(2), 316–337.
- Chiang, J. C. H., and A. R. Friedman (2012), Extratropical cooling, interhemispheric thermal gradients, and tropical climate change, *Annu. Rev. Earth Planet. Sci.*, 40(1), 383.
- Chin, M., et al. (2014), Multi-decadal aerosol variations from 1980 to 2009: A perspective from observations and a global model, *Atmos. Chem. Phys.*, 14, 3657–3690.
- Clement, A. C., R. Burgman, and J. R. Norris (2009), Observational and model evidence for positive low-level cloud feedback, *Science*, 325(5939), 460–464, doi:10.1126/science.1171255.
- Delworth, T. L., R. Zhang, and M. E. Mann (2007), Decadal to centennial variability of the Atlantic from observations and models, in *Ocean Circulation: Mechanisms and Impacts—Past and Future Changes of Meridional Overturning*, pp. 131–148.
- Doherty, O., and A. Evan (2014), Identification of a new dust-stratocumulus indirect effect over the tropical North Atlantic, *Geophys. Res. Lett.*, 41, 6935–6942, doi:10.1002/2014GL060897.
- Enfield, D. B., A. M. Mestas-Nuñez, and P. J. Trimble (2001), The Atlantic multidecadal oscillation and its relation to rainfall and river flows in the continental US, *Geophys. Res. Lett.*, 28(10), 2077–2080.

- Evan, A. T., and S. Mukhopadhyay (2010), African dust over the northern tropical Atlantic: 1955-2008, *J. Appl. Meteorol. Climatol.*, *49*(11), 2213–2229.
- Evan, A. T., D. J. Vimont, A. K. Heidinger, J. P. Kossin, and R. Bennartz (2009), The role of aerosols in the evolution of tropical North Atlantic ocean temperature anomalies, *Science*, *324*(5928), 778–781, doi:10.1126/science.1167404.
- Evan, A. T., C. Flamant, S. Fiedler, and O. Doherty (2014), An analysis of aeolian dust in climate models, *Geophys. Res. Lett.*, *41*, 5996–6001, doi:10.1002/2014GL060545.
- Foltz, G. R., and M. J. McPhaden (2008), Impact of Saharan dust on tropical North Atlantic SST\*, *J. Clim.*, *21*(19), 5048–5060.
- Frierson, D. M. W., Y.-T. Hwang, N. S. FucKar, R. Seager, S. M. Kang, A. Donohoe, E. A. Maroon, X. Liu, and D. S. Battisti (2013), Contribution of ocean overturning circulation to tropical rainfall peak in the Northern Hemisphere, *Nat. Geosci.*, *6*(11), 940–944.
- Guan, B., and S. Nigam (2009), Analysis of Atlantic SST variability factoring interbasin links and the secular trend: Clarified structure of the Atlantic multidecadal oscillation, *J. Clim.*, *22*(15), 4228–4240.
- Hodson, D. L. R., J. I. Robson, and R. T. Sutton (2014), An anatomy of the cooling of the North Atlantic Ocean in the 1960s and 1970s, *J. Clim.*, *27*(21), 8229–8243.
- Kang, S. M., I. M. Held, D. M. W. Frierson, and M. Zhao (2008), The response of the ITCZ to extratropical thermal forcing: Idealized slab-ocean experiments with a GCM, *J. Clim.*, *21*(14), 3521–3532.
- Kang, S. M., D. M. W. Frierson, and I. M. Held (2009), The tropical response to extratropical thermal forcing in an idealized GCM: The importance of radiative feedbacks and convective parameterization, *J. Atmos. Sci.*, *66*(9), 2812–2827.
- Kavvada, A., A. Ruiz-Barradas, and S. Nigam (2013), AMO's structure and climate footprint in observations and IPCC AR5 climate simulations, *Clim. Dyn.*, *41*(5-6), 1345–1364.
- Kerr, R. A. (2000), A North Atlantic climate pacemaker for the centuries, *Science*, *288*, 1984–1985.
- Klein, S. A., and D. L. Hartmann (1993), The seasonal cycle of low stratiform clouds, *J. Clim.*, *6*(8), 1587–1606.
- Knight, J. R., C. K. Folland, and A. A. Scaife (2006), Climate impacts of the Atlantic Multidecadal Oscillation, *Geophys. Res. Lett.*, *33*, L17706, doi:10.1029/2006GL026242.
- Kushnir, Y., and I. M. Held (1996), Equilibrium atmospheric response to North Atlantic SST anomalies, *J. Clim.*, *9*(6), 1208–1220.
- Mahowald, N. M., et al. (2010), Observed 20th century desert dust variability: Impact on climate and biogeochemistry, *Atmos. Chem. Phys.*, *10*(22), 10,875–10,893.
- Mann, M. E., and K. A. Emanuel (2006), Atlantic hurricane trends linked to climate change, *Eos Trans. AGU*, *87*(24), 233–241.
- Martin, E. R., C. Thorncroft, and B. B. Booth (2014), The multidecadal Atlantic SST—Sahel rainfall teleconnection in CMIP5 simulations, *J. Clim.*, *27*(2), 784–806.
- Martinez-Garcia, A., A. Rosell-Melé, S. L. Jaccard, W. Geibert, D. M. Sigman, and G. H. Haug (2011), Southern Ocean dust-climate coupling over the past four million years, *Nature*, *476*(7360), 312–315.
- McGee, D., W. S. Broecker, and G. Winckler (2010), Gustiness: The driver of glacial dustiness?, *Quat. Sci. Rev.*, *29*(17), 2340–2350.
- McGee, D., P. B. de Menoca, G. Winckler, J. B. W. Stuut, and L. I. Bradtmiller (2013), The magnitude, timing and abruptness of changes in North African dust deposition over the last 20,000 yr, *Earth Planet. Sci. Lett.*, *371*, 163–176.
- Meehl, G. A., et al. (2014), Decadal climate prediction: An update from the trenches, *Bull. Am. Meteorol. Soc.*, *95*(2), 243–267.
- Murphy, L. N., A. C. Clement, S. Albani, N. M. Mahowald, P. Swart, and M. M. Arienzo (2014), Simulated changes in atmospheric dust in response to a Heinrich stadial, *Paleoceanography*, *29*, 30–43, doi:10.1002/2013PA002550.
- Omrani, N.-E., N. S. Keenlyside, J. Bader, and E. Manzini (2014), Stratosphere key for wintertime atmospheric response to warm Atlantic decadal conditions, *Clim. Dyn.*, *42*, 649–663.
- Platnick, S., M. King, S. Ackerman, W. Menzel, B. Baum, J. Riedi, and R. Frey (2003), The MODIS cloud products: Algorithms and examples from Terra, *IEEE Trans. Geosci. Remote Sens.*, *41*(2), 459–473, doi:10.1109/TGRS.2002.808301.
- Qu, X., A. Hall, S. A. Klein, and P. M. Caldwell (2014), On the spread of changes in marine low cloud cover in climate model simulations of the 21st century, *Clim. Dyn.*, *42*(9-10), 2603–2626.
- Ridley, D. A., C. L. Heald, and J. Prospero (2014), What controls the recent changes in African mineral dust aerosol across the Atlantic?, *Atmos. Chem. Phys.*, *14*(11), 5735–5747.
- Sutton, R. T., and D. L. R. Hodson (2005), Atlantic Ocean forcing of North American and European summer climate, *Science*, *309*(5731), 115–118.
- Sutton, R. T., and D. L. R. Hodson (2007), Climate response to basin-scale warming and cooling of the North Atlantic Ocean, *J. Clim.*, *20*(5), 891–907.
- Teixeira, J., et al. (2011), Tropical and subtropical cloud transitions in weather and climate prediction models: The GCSS/WGNE Pacific Cross-Section Intercomparison (GPCI), *J. Clim.*, *24*(20), 5223–5256.
- Ting, M., Y. Kushnir, R. Seager, and C. Li (2009), Forced and internal twentieth-century SST Trends in the North Atlantic\*, *J. Clim.*, *22*(6), 1469–1481.
- Wang, C., S. Dong, A. T. Evan, G. R. Foltz, and S.-K. Lee (2012), Multidecadal covariability of North Atlantic sea surface temperature, African dust, Sahel rainfall, and Atlantic hurricanes, *J. Clim.*, *25*(15), 5404–5415.
- Wang, C., L. Zhang, S.-K. Lee, L. Wu, and C. R. Mechoso (2014), A global perspective on CMIP5 climate model biases, *Nat. Clim. Change*, *4*(3), 201–205.
- Xie, S., and S. G. H. Philander (1994), A coupled ocean-atmosphere model of relevance to the ITCZ in the eastern Pacific, *Tellus A*, *46*(4), 340–350.
- Yuan, T., L. Remer, and H. Yu (2011), Microphysical, macrophysical and radiative signatures of volcanic aerosols in trade cumulus observations by the A-Train, *Atmos. Chem. Phys.*, *11*, 7132.
- Zhang, J., and R. Zhang (2015), On the evolution of Atlantic Meridional Overturning Circulation Fingerprint and implications for decadal predictability in the North Atlantic, *Geophys. Res. Lett.*, *42*, 5419–5426, doi:10.1002/2015GL064596.
- Zhang, R., and T. L. Delworth (2006), Impact of Atlantic multidecadal oscillations on India/Sahel rainfall and Atlantic hurricanes, *Geophys. Res. Lett.*, *33*, L17712, doi:10.1029/2006GL026267.
- Zhang, R., S. M. Kang, and I. M. Held (2010), Sensitivity of climate change induced by the weakening of the Atlantic meridional overturning circulation to cloud feedback, *J. Clim.*, *23*(2), 378–389.
- Zhang, R., et al. (2013), Have aerosols caused the observed Atlantic multidecadal variability?, *J. Atmos. Sci.*, *70*(4), 1135–1144.



**Erratum**

In the originally published version of this article, an author did not acknowledge a funding source and include an auspices statement. The acknowledgments has since been corrected as detailed below, and this version may be considered the authoritative version of record. In the acknowledgments, "All the data used in this study are based on publically available data sets." was changed to "All the data used in this study are based on publicly available data sets. The contribution of MZ was performed under the auspices of the U.S. Department of Energy by Lawrence Livermore National Laboratory under Contract DE-AC52-07NA27344 and was supported by the Regional and Global Climate Modeling Program of the United States Department of Energy's Office of Science."