

Phases of Canonical Wnt Signaling During the Development of Mouse Intestinal Epithelium

BYEONG-MOO KIM,^{*,‡} JUNHAO MAO,[§] MAKOTO M. TAKETO,^{||} and RAMESH A. SHIVDASANI^{*,‡,¶}

^{*}Dana-Farber Cancer Institute and Department of Medicine, Boston; [‡]Harvard Medical School, Boston; [§]Department of Molecular and Cellular Biology, Harvard University, Boston, Massachusetts; ^{||}Department of Pharmacology, Graduate School of Medicine, Kyoto University, Kyoto, Japan; and [¶]Brigham & Women's Hospital, Boston, Massachusetts

See editorial on page 710.

Background & Aims: Intestinal crypts constitute a niche in which epithelial progenitors respond to Wnt signals, replicate, and prepare to differentiate. Because mutations in Wnt pathway genes lead to intestinal cancer, the role of Wnt signaling in gut epithelial homeostasis is a subject of intense investigation. We studied how Wnt signaling is established during intestine development. **Methods:** We studied spatiotemporal features of Wnt signaling at formative stages in mouse embryos, when villous projections appear and crypt precursors occupy intervillus regions. We used TOP-GAL transgenic and *Axin2^{LacZ}* mice, which report faithfully on canonical Wnt activity, relevant molecular markers, and embryos with aberrant β -catenin activation. **Results:** Developing intestines first display evidence for Wnt signaling after appearance of villi. During villus morphogenesis, intervillus cells proliferate actively but lack signs of canonical Wnt signaling. Surprisingly, in late gestation and briefly thereafter, conspicuous Wnt activity is evident in differentiated, postmitotic villus epithelium. Neither Tcf4, a principal transcriptional effector of intestinal Wnt signals, nor candidate Wnt targets CD44 and cyclinD1 are expressed in late fetal villus cells that show high Wnt activity. Instead, those cells express the related factor Tcf3 and a different Wnt target, c-Myc. Premature and deregulated β -catenin activation causes severe villus dysmorphogenesis in transgenic mice. **Conclusions:** Relationships among Wnt signaling, epithelial proliferation, and tissue differentiation are reversed in the developing and adult gut. The canonical Wnt pathway has independent, albeit possibly overlapping, functions in early intestinal villi and adult crypts. These observations advance understanding of Wnt functions in intestinal development and disease.

In the adult small intestine, monoclonal populations of epithelial stem cells reside in crypts of Lieberkühn and give rise to 4 daughter cell lineages: Paneth cells, which

remain at the crypt base, and enterocytes, goblet, and enteroendocrine cells, which populate the villi.¹ Because gut mucosa is renewed every 3–5 days, intestinal stem cells or their immediate progeny replicate frequently,^{2,3} and their behavior is regulated by canonical Wnt signals.⁴ Crypt-villus junctions delimit a zone of active Wnt signaling and cell proliferation in crypts from that of postmitotic differentiation and absence of Wnt activity in villi.

Epithelial progenitors in the human colon are frequent targets of cancer. Somatic mutations that initiate colon tumorigenesis occur in the *adenomatous polyposis coli* (*APC*) or β -catenin (*CTNNB1*) genes and cause constitutive activation of the Wnt pathway.^{4,5} β -catenin accumulates in affected cells and functions as a coactivator for transcription factors of the Tcf/LEF family, mainly Tcf4.^{6,7} The resulting molecular derangements impose properties of crypt epithelial progenitors, including replication capacity, on transformed cells.⁸ Acute APC loss in the adult gut rapidly expands the crypt compartment and impairs differentiation of secretory cell lineages,^{9,10} whereas inhibition of Wnt signaling in adult mouse intestine reduces epithelial proliferation, coincident with loss of nuclear β -catenin and of crypt structures.¹¹ Less is known about the timing and manner in which a local niche for Wnt signaling is established in the developing gut.

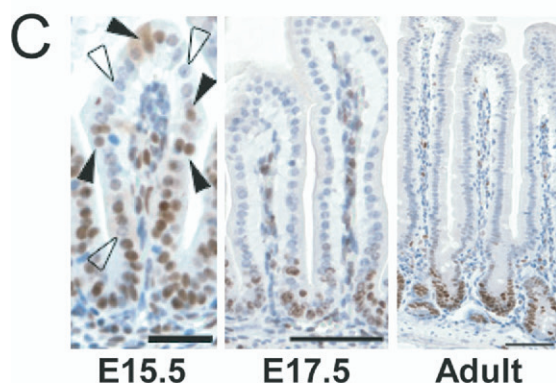
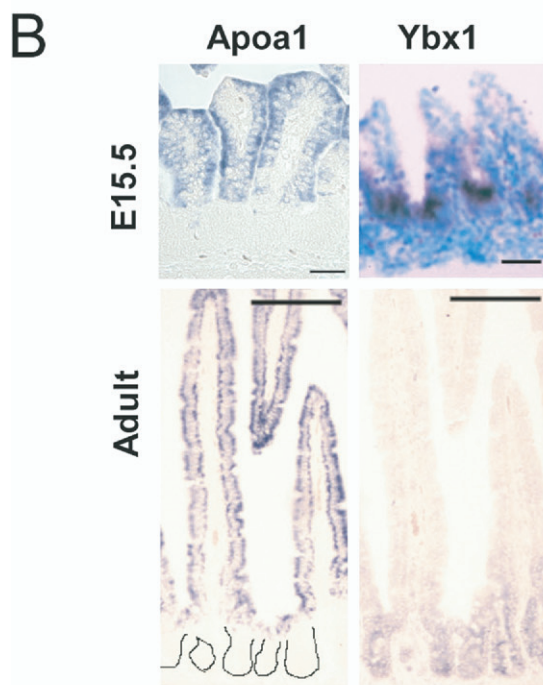
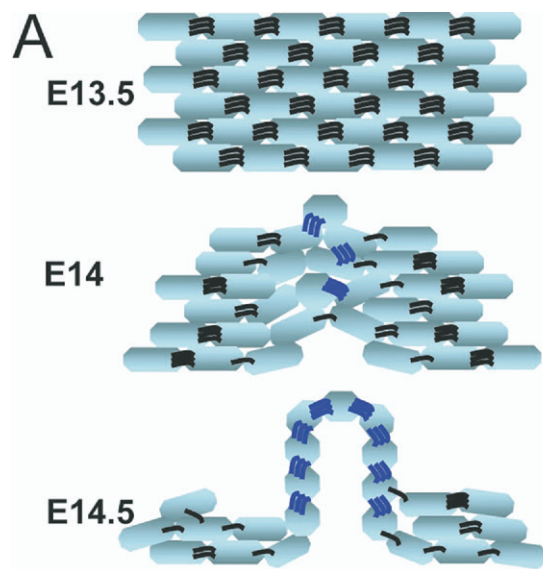
Intestinal villus morphogenesis begins when mesenchymal aggregates impinge on the basal aspect of the epithelium to produce primitive folds. The pseudostratified squamous epithelium then converts into a single layer of columnar cells that line mesenchymal stalks or the lamina propria (Figure 1A); this occurs around embryonic day (E) 14 in the mouse, E18 in the rat, and between 9 and 10 weeks in human gestation.¹² Cells within the multilayered precursor tissue are joined by tight junctions and desmosomes, which rearrange during villus morphogenesis.^{13,14} Rudimentary features of cell maturation, including microvilli and secretory granules,

Abbreviations used in this paper: Ab, antibody; BrdU, bromodeoxyuridine; E, embryonic day; GFP, green fluorescent protein.

© 2007 by the AGA Institute

0016-5085/07/\$32.00

doi:10.1053/j.gastro.2007.04.072



appear coincidentally, and cell numbers remain roughly constant, with attrition of a minority of superficial cells and virtually no dilution of bromodeoxyuridine (BrdU) or [^3H]-thymidine labels introduced earlier.¹²⁻¹⁴ Thus, the earliest differentiated cells to populate intestinal villi are the same cells that recently were stacked in layers. By contrast, subsequent generations of villus epithelial cells originate in ordered differentiation and migration of intervillus or crypt progenitors.^{2,3} To determine when the earliest Wnt-responsive stem/progenitor cells appear, we examined gene expression in relation to mouse gut epithelial development.

Materials and Methods

Experimental Animals

TOP-GAL transgenic mice and strain-matched (CD1) controls were purchased from Jackson Laboratories (Bar Harbor, ME). Sonic hedgehog (*Shh*)^{+/Cre} mice originated by targeted insertion of a GFP-Cre fusion complementary DNA (cDNA) into the *Shh* locus, allowing expression of Cre recombinase under control of *Shh* regulatory sequences.¹⁵ *Catnb*^{+lox(ex3)} mice carry an allele with LoxP sites flanking exon 3 of the β -catenin gene.¹⁶ *Axin2*^{LacZ} mice have the β -galactosidase reporter cDNA embedded in the *Axin2* locus²⁵ and were kindly provided by Max-Delbrück Center, Berlin, Germany. Animals were housed and handled according to protocols approved by institutional committees. The morning of identification of a copulation plug was designated as day 0.5 of gestation.

β -Galactosidase Staining

Whole mouse embryos or organs were isolated in Ca^{2+} - and Mg^{2+} -free Hank's balanced salt solution (Invitrogen, Carlsbad, CA), fixed for 15 minutes with 4%

Figure 1. Early epithelial morphogenesis, differentiation, and proliferation in mouse gut development. (A) Schematic representation of the conversion of pseudostratified squamous endoderm to a columnar villous epithelium around the 14th day in mouse gestation, emphasizing that the first cells to line primordial villi arise by epithelial morphogenesis and not after programming in crypts or intervillus spaces. Cells with flat morphology become columnar and polarized, and the epithelial conversion involves extensive rearrangement of adherens junctions, represented in this diagram with *hooked bars*. The schema is based on results from Trier and Moxey,¹² Mathan et al,¹³ and Madara et al.¹⁴ (B) In situ hybridization results with markers of gut epithelial maturity, represented here by *Apoa1* and *Ybx1*, indicate that spatial segregation of gene expression in primordial villi and intervillus spaces occurs in apparent conjunction with epithelial conversion by E15.5, well before segregation of proliferating and postmitotic cells. Scale bars, E15.5, 40 μm ; adult, 75 μm . Adult crypts lacking *Apoa1* expression are outlined manually for clarity. (C) Ki67 immunostaining in E15.5 embryos reveals proliferative activity in most (*solid arrowheads*) but not all (*open arrowheads*) epithelial cells, regardless of villus position. Proliferation is confined to intervillus regions by E17.5 and to the crypts of Lieberkühn in adults. Scale bars, embryos, 75 μm ; adult, 150 μm .

paraformaldehyde in phosphate-buffered saline (PBS), washed 3 times in PBS, and incubated in staining solution (PBS, pH 7.2 containing 1 mg/mL 5-bromo-4-chloro-3-indolyl- β -D-galactoside, 5 mmol/L $K_3Fe(CN)_6$, 5 mmol/L $K_4Fe(CN)_6 \cdot 3H_2O$, 1 mmol/L $MgCl_2$, 0.01% sodium deoxycholate, 0.02% NP-40) for 9–10 hours at 37°C. Samples were photographed under a binocular microscope, postfixed in 4% paraformaldehyde for 1 hour at 4°C, dehydrated in ethanol, and embedded in paraffin. Ten-micrometer sections, counterstained with eosin or nuclear fast red, were examined by light microscopy, and images were captured with a CCD camera using QCapture and Adobe Photoshop 7.0 software.

Sample Preparation, Immunohistochemistry, and RNA in Situ Hybridization

Intestines were fixed in 4% paraformaldehyde, dehydrated, embedded in paraffin, and sections of 5- to 6- μ m thickness were prepared. For antigen retrieval, slides were incubated in a pressure cooker for 3 minutes in 10 mmol/L sodium citrate, pH 6.0. Samples were incubated for 24 hours at 4°C with one of the following mouse monoclonal antibodies (Ab): Tcf4 (1:500, Upstate Biotechnology, Charlottesville, VA), Tcf3/4 (1:250, Upstate), activated β -catenin (1:500, Upstate), CD44 (1:100, Becton Dickinson, San Diego, CA), BrdU (1:100, Developmental Studies Hybridoma Bank, University of Iowa), proliferating cell nuclear antigen (1:150, Zymed, San Francisco, CA), Cdx2 (1:20, Biogenex, San Ramon, CA; MU392A-UC) or with rabbit antisera against c-Myc (1:200, Santa Cruz Biotechnology, Santa Cruz, CA), cyclin D1 (1:500, Santa Cruz), Lef-1 (1:1000, gift of Rudi Grosschedl), or Ki67 (1:2000, Vector Labs, Burlingame, CA). Samples were washed, incubated with biotinylated goat anti-mouse or anti-rabbit IgG, and treated with avidin-biotin-peroxidase complex (Vector Laboratories). The reaction was visualized with diaminobenzidine (DAB) hydrochloride (Sigma Chemical Co., St. Louis, MO). RNA in situ hybridization was performed as described previously¹⁵ using digoxigenin-labeled Apoa1, Ybx1, or sense control riboprobes (1 μ g/mL), alkaline phosphatase-conjugated anti-digoxigenin Ab (Roche, Indianapolis, IN), and nitroblue-tetrazolium and 5-bromo-4-chloro-3-indolyl phosphate.

Results

Regional Gene Expression in Relation to Early Villus Morphogenesis

Transcriptional profiles of the developing mouse gut reveal widespread activation of molecular markers of the mature epithelium between E13 and E15, coincident with early villus morphogenesis.¹⁷ Even in the earliest villi, in situ hybridization localized many messenger RNA (mRNA) in patterns characteristic of adult intestine (Figure 1B). Transcripts that appear in differentiated cells in adults are confined to villi in E15 mouse embryos,

whereas those restricted to adult crypts localize in intervillus cells. Thus, the earliest villus-lining cells, which converted from undifferentiated squamous epithelium, are readily distinguished from intervening crypt precursors at the level of gene expression; even in the absence of structured crypts, boundaries of gene expression between villi and intervillus regions appear at the same time that the epithelium is remodeled. This demarcation of gene expression domains precedes zonation of epithelial cell replication. Ki67 (Figure 1C) and proliferating cell nuclear antigen (data not shown) immunostaining of E15.5 gut identifies proliferation not only in intervillus cells but also in many cells that lie along the newly formed villi and express differentiation-related transcripts. Thus, gene expression in bowel mucosa is regionalized in conjunction with early villus morphogenesis.

Unexpected Regional Pattern of Wnt Activity in the Late Fetal Intestine

Mucosal Wnt signaling in adult intestine is confined to the crypt, including progenitor and Paneth cells.^{4,18} To determine when prospective crypt cells first acquire this distinguishing feature, we assessed LacZ staining in TOP-GAL transgenic embryos, which carry the *Escherichia coli* β -galactosidase gene under the control of Wnt/Tcf-responsive *cis*-elements.¹⁹ These animals report faithfully on canonical Wnt activity, as we reported previously²⁰ and verified in the vibrissae, brain, and tracheobronchial tree (Figure 2A and 2B), known sites of active Wnt signaling in midgestation embryos.^{19,21,22} In adult gut epithelium, LacZ signal is confined to the crypt base (Figure 2C), corresponding to the location of Paneth cells, known recipients of intestinal Wnt signals.¹⁸

Surprisingly, LacZ staining in intervillus regions, the functional precursors of intestinal crypts, is prominent only on the third postnatal day (Figure 2N). Rather, it is the earliest intestinal villi that display strong β -galactosidase activity in late gestation and immediately after birth. On the CD1 genetic background, LacZ activity reproducibly appears first between E16.25 and E16.5 (Figure 2G and 2H). Prior to this period, β -galactosidase activity is detected with radial asymmetry in stomach endoderm (Figure 2F), as we reported previously,²⁰ but not at all in intestine (Figure 2D and 2E), including the pseudostratified squamous lining at E13 or E14 (data not shown). Villus LacZ staining increases steadily in intensity until E18.5 (Figure 2J and 2M) and persists until approximately 2 days after birth. Intervillus cells, which subsequently show strong β -galactosidase activity (Figure 2N), lack a signal for most of the duration that one is detected in villus surface cells. Brünner's glands, a submucosal network of branching secretory ducts²³ that is confined to the first portion of the duodenum in mice, also show strong LacZ staining in weanling TOP-GAL mice (Figure 2P). The embryos for our study were derived from crosses between wild-type and hemizygote trans-

genic mice so that only half the progeny carried the TOP-GAL reporter; we observed villus β -galactosidase activity in all transgenic embryos and never in nontransgenic littermates (Figure 2I).

β -galactosidase activity in any tissue likely correlates imperfectly with the duration of active Wnt signaling: the enzyme must first accumulate, and, because it is highly

stable, its activity may outlast brief periods of Wnt signaling. Moreover, although differences in LacZ signal intensity likely reflect true variation in the degree of Wnt activity, there is probably a threshold below which Wnt signaling is undetected in TOP-GAL tissues. LacZ mRNA in situ hybridization confirmed exclusively villus expression in the fetal gut; we detected weak RNA expression at E16.0 (data not shown) and robust expression thereafter (Figure 3A). Our data hence reveal a perinatal window in which canonical Wnt signaling is active in newly formed villi but not in intervillus cells. Canonical Wnt signaling in the latter population first becomes evident on the day of birth in a fraction ($\sim 20\%$) of villus profiles; at this stage, the signal remains considerably more prominent in villi, and the majority of intervillus regions still lack β -galactosidase activity (green arrowheads in Figure 3B). Wnt signaling shifts completely from villi to intervillus regions over the next 2 days (Figure 2N). These staining patterns were unchanged when transgenic TOP-GAL mice were crossed into mixed CD1-C57BL/6 and CD1-129/Sv genetic backgrounds. Because intestinal epithelium differentiates in a proximal to distal wave, we surveyed the length of the gut to determine the timing of villus activation of the Wnt pathway. TOP-GAL mice showed the predicted proximal-to-distal gradient of intestinal LacZ staining (see Supplemental Figure 1 online at www.gastrojournal.org).

As an independent indicator of canonical Wnt signaling, we assessed fetal and postnatal mouse intestines for nuclear localization of β -catenin, a marker of Wnt pathway activation. As expected, immunohistologic detection of β -catenin is confined to the crypts of Lieberkühn in adult mice and especially to Paneth cells at the base (Figure 3C). In contrast, and in agreement with the β -galactosidase data shown in Figure 2, between E17 and 2 days after birth, nuclear β -catenin is found in cells lining

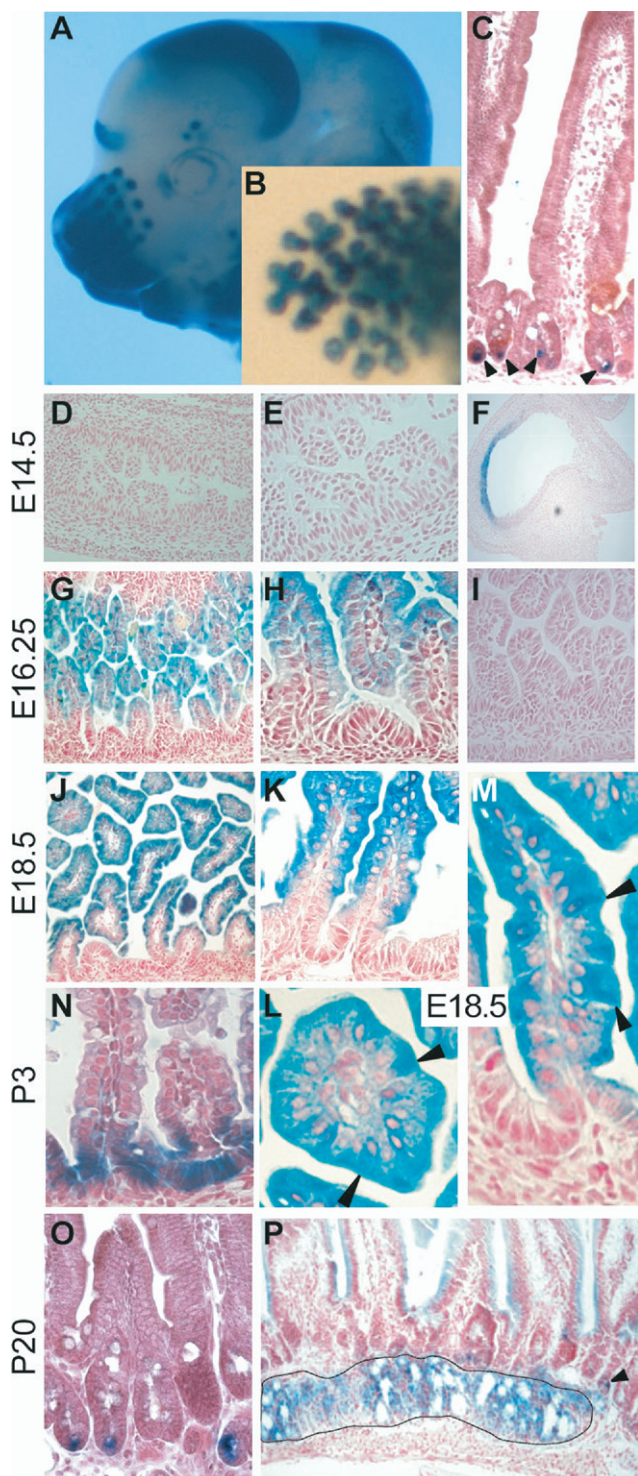


Figure 2. Sites of canonical Wnt signaling activity in gut development mapped in TOP-GAL reporter mice. (A–C) Whole-mount (A and B) and microscopic (C) evidence that TOP-GAL mice report faithfully on sites of high canonical Wnt signaling in embryos (A and B) and adults (C), as revealed in the follicles of vibrissae at E16,¹⁹ points of bronchial branching at E16,²² and near the base of adult intestinal crypts.¹⁸ (D–F) At E14.5, there is no indication of canonical Wnt signaling in intestine (D, low magnification; E, high magnification), but asymmetric Wnt activity is detected in stomach endoderm (F), as reported previously.²⁰ (G–I) β -galactosidase staining is first detected along villi in fetal duodenum at E16.25 in TOP-GAL (G, low magnification; H, high magnification) embryos but not in nontransgenic littermate (I) controls. (J–M) β -galactosidase activity, a marker for Wnt signaling, peaks on the eighteenth gestational day (J, low magnification; K, high magnification) when it is still restricted to villous cells and excluded from intervillus regions. In these duodenal sections, scattered villous cells (arrowheads in L and M) show higher activity but do not correspond to discrete lineages. (N–P) Epithelial Wnt activity is fully shifted to intervillus spaces by the third postnatal day, P3, and confined to basal crypt cells (O; and arrowhead in P), probably of the Paneth lineage, and to duodenal Brünner's glands (outlined in P) in weanling (P20) mice.

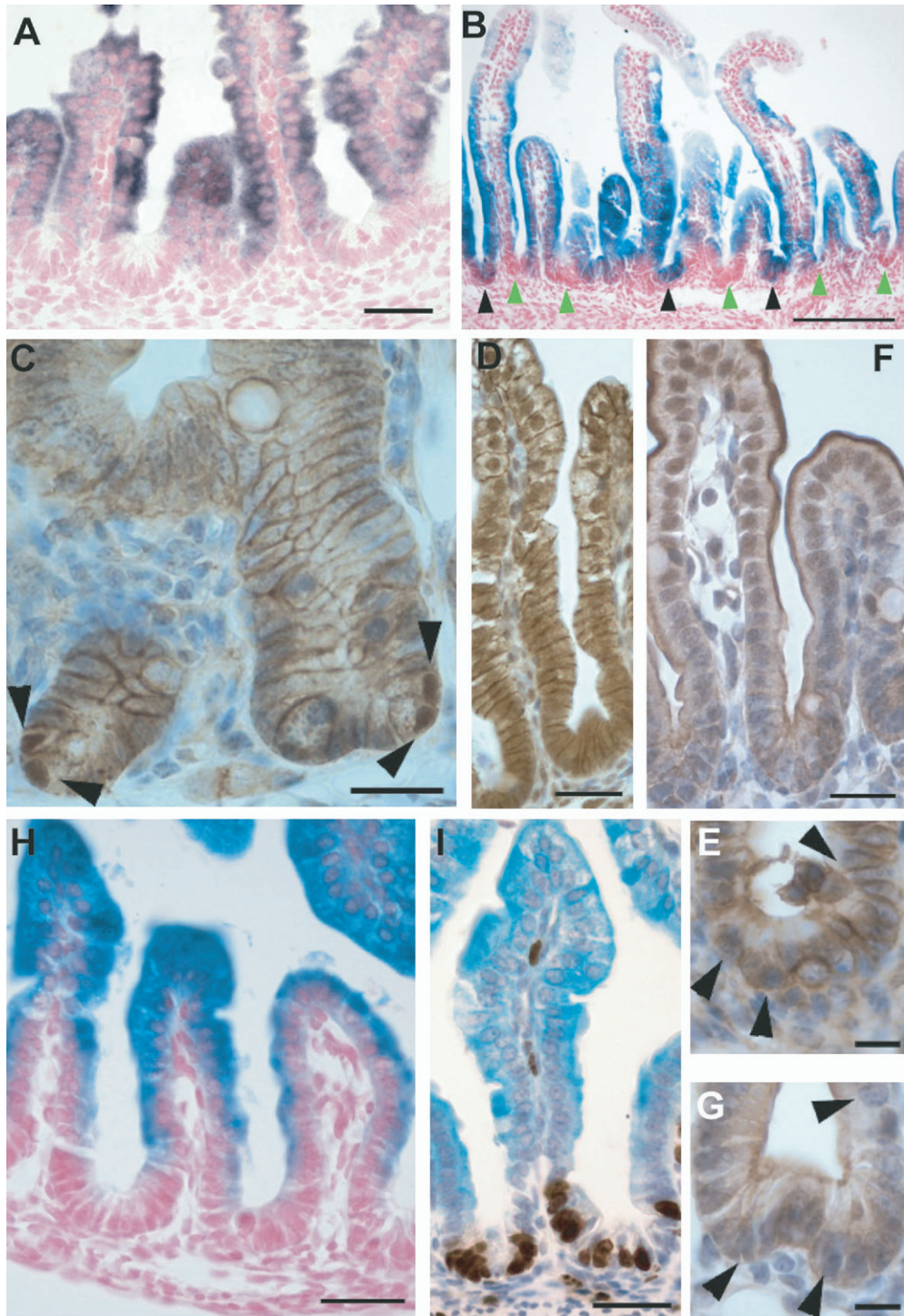


Figure 3. Relation of canonical Wnt signaling in perinatal intestinal villi to cell proliferation and to other markers of Wnt activity. (A) β -galactosidase in situ hybridization on E16.5 TOP-GAL mouse intestine, confirming mRNA expression in villus but not intervillus cells in prospective duodenum. (B) Transition from intestinal villus to intervillus concentration of Wnt activity in neonatal mice. The LacZ signal diminishes in TOP-GAL villus tips, and, although villus activity remains, β -galactosidase activity is detected for the first time in approximately 20% of intervillus regions (black compared with green arrowheads) in duodenum. (C) In older mice (P20), nuclear β -catenin is restricted to crypts, especially in Paneth cells at the base (arrowheads). (D–G) Immunohistochemistry for activated, nuclear β -catenin (D and E) and c-Myc (F and G) in E18.5 duodenum provides independent evidence for canonical Wnt signaling in villus (D and F) but not intervillus (arrowheads in E and G) cells in late fetal stages. (H) LacZ staining pattern in jejunum from E18.5 Axin2 LacZ embryos, again revealing Wnt activity in villi. (I) TOP-GAL dams were injected with BrdU on the eighteenth postcoital day; fetal duodeni were harvested 2 hours later and tested for β -galactosidase activity (blue) and BrdU immunostaining (brown). Absence of overlap between the 2 signals indicates that Wnt activity and epithelial cell proliferation are uncoupled at this stage. Scale bars, A and B, 300 μ m; C, E, and G, 25 μ m; D and F, 50 μ m; H and I, 75 μ m.

each villus (Figure 3D) but not in intervillus cells (detail in Figure 3E); it appears consistently in the intervillus zone only after the second postnatal day (data not shown). We also examined expression of c-Myc, one of the best characterized targets of canonical Wnt signaling.^{8,11,24} c-Myc distribution is virtually identical to that of nuclear β -catenin, with highest expression in nuclei near villus tips, lower levels toward the villus base, and none in intervillus regions (Figure 3F, and detail in Fig-

ure 3G). Finally, we studied an independent murine reporter strain for Wnt activity, where LacZ cDNA replaces the coding sequence of the *Axin2/conductin* gene,²⁵ an established target of Wnt signaling in diverse tissues.²⁶ Just as in TOP-GAL embryos, the intestine in E18.5 *Axin2^{LacZ}* mice showed high β -galactosidase activity in villus epithelial cells and sparing of the intervillus regions (Figure 3H). Thus, 4 informative markers, reporter activity in TOP-GAL and *Axin2^{LacZ}* mice, nuclear β -catenin, and c-Myc expression, reveal canonical Wnt signaling over the villus surface in mouse gestation and earlier than its restriction in prospective crypt precursors.

Disparity Between Wnt Signaling and Intestinal Epithelial Proliferation in the Perinatal Period

Villus formation and early activation of intestinal differentiation genes both occur before the first signs of intestinal Wnt signaling in TOP-GAL embryos (Figures 1 and 2); accordingly, villus Wnt activity in the perinatal period must be associated with processes other than these. In adult gut, canonical Wnt signaling promotes crypt-specific behaviors and distinguishes proliferating cells from their differentiated progeny.⁴ We evaluated intestines after treating pregnant dams with a 2-hour pulse of BrdU. By E17.5, when Wnt-responsive TOP-GAL expression is readily detected in mouse intestine, only rare proliferating (BrdU⁺) cells are found in intestinal villi, the location of Wnt activity; epithelial proliferation is largely restricted to the intervillus regions, at which LacZ signals are absent (Figure 3I). Thus, Wnt signaling and epithelial cell proliferation are almost mutually exclusive in the late fetal gut. Wnt activity later localizes in

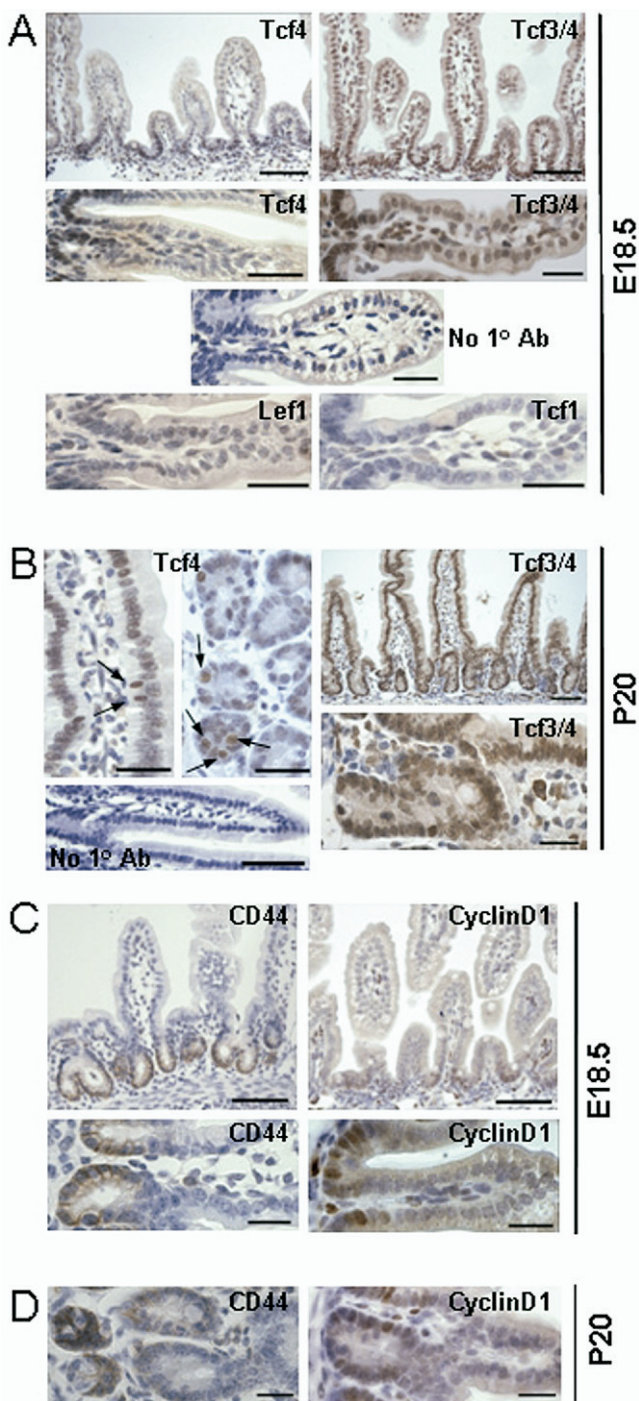


Figure 4. Transcriptional mediators and output of Wnt signaling in late fetal intestinal villi. (A) In E18.5 intestine, epithelial Tcf4 expression is detected exclusively in intervillus cells, which lack Wnt activity, and is absent from villus epithelial cells, in which Wnt activity is robust. Bispecific Tcf3/Tcf4 Ab stains the whole structure, in which stronger staining in intervillus regions likely represents Tcf4 expression, and the villus signal, absent with Tcf4-specific Ab, points to Tcf3 expression along perinatal villi. Low- and high-magnification images are shown in the top and bottom panels, respectively. Tcf1 and Lef1 are not detected in the epithelium (but strongly in lymphoid aggregates and hair follicles, respectively; data not shown). (B) In weanling mice, both Tcf3/Tcf4- and Tcf4-specific Ab react with nuclei along whole crypt-villus units; Tcf4 expression is highest in surface mucosal cells with basally displaced nuclei (arrows in the longitudinal villus section to the left) and in Paneth cells (arrows in the transverse crypt section on the right). (C) At E18.5, when canonical Wnt signals are prominent along villi and excluded from intervillus regions, expression of candidate Wnt targets, CD44 and cyclin D1, shows the opposite distribution. Their concentration in intervillus cells resembles their restriction to the crypts in older animals (D) and suggests that villus Wnt signaling activates a program distinct from that in adult epithelial progenitors. Scale bars, A, top 2 panels, 150 μ m, bottom 5 panels, 75 μ m. B, top left 2 panels, 75 μ m; all others, 150 μ m; bottom right, 50 μ m. C, top 2 panels, 150 μ m; bottom 2 panels, 50 μ m. D, 50 μ m.

BASIC-ALIMENTARY TRACT

the proliferative zone (Figure 2C and 2N, and data not shown), as expected.

Transduction of Perinatal Villus Wnt Signals by a Factor Other Than Tcf4

Canonical Wnt signals are transduced through Tcf/LEF family proteins. Tcf4 is especially abundant in, and virtually specific to, adult gut epithelium,^{6,27} and Tcf4^{-/-} mice die soon after birth from presumed complications of defects confined to the gut.²⁸ Intervillus cells in the Tcf4-null small bowel mucosa fail to proliferate; the capacity to populate villi is consequently reduced, and the defect is evident before birth.²⁸ Indeed, in E18.5 mouse embryos, near to term, epithelial Tcf4 protein expression is virtually restricted to cells in the intervillus space (Figure 4A).

The findings in Tcf4-null mice helped establish the idea that gut epithelial cell proliferation requires Wnt signals. However, we show above that intervillus Wnt signaling in reporter mice is at best patchy at birth (Figure 3A). This implies that early intervillus cells may not respond to Wnt or depend on levels that are below the detection threshold for β -galactosidase activity in TOP-GAL or Axin2^{LacZ} mice and of immunostaining for nuclear β -catenin in intervillus cells at E18.5 (Figure 3D–G) or 1 day after birth (data not shown). Later in life, Tcf4 expression occurs over the full surface of mouse intestinal villi (Figure 4B), similar to findings reported in the late human fetus,²⁷ although Wnt signaling is confined to crypts. In differentiated villus cells in adolescent mice, Tcf4 expression is highest in epithelial cells with basally displaced nuclei (Figure 4B, and data not shown), which seem to correspond to a subset of goblet cells.

Tcf3 and Tcf4 are the dominant Tcf/LEF family proteins present in the gut.²⁹ To assess developmental expression of Tcf3, we used an Ab that recognizes both Tcf3 and Tcf4;²⁷ when the results are interpreted in light of expression revealed by the Tcf4-specific reagent, reasonable inferences may be drawn about Tcf3 distribution. Unlike the pattern observed with Tcf4-specific Ab, which selectively stains intervillus cells in E18.5 mouse embryos, the bispecific Ab stains nuclei along the entire villus (Figure 4A). Immunostaining is most intense in intervillus nuclei, which may reflect abundance of Tcf4 protein in these cells, but Tcf3/4 is also readily detected in the differentiated cells that express β -galactosidase in TOP-GAL and Axin2^{LacZ} neonates. Taken together with absence of villus Tcf4 expression at perinatal stages, Tcf3 is a leading candidate effector of Wnt signaling in villi. Weak cytoplasmic background signal with anti-mouse secondary Ab was easily distinguished from specific nuclear staining, and we detected the 2 other members of the family, Tcf1 and Lef1, in lymphoid aggregates and hair follicles, respectively (data not shown), but hardly any in gut epithelial cells (Figure 4A).

Distinct Wnt-Induced Programs in Adult Crypts and Perinatal Villi

The unexpected pattern and timing of Wnt activity in the developing gut raise the question of whether the outcome of intestinal Wnt signaling differs according to developmental stage and cellular context. Pertinent transcriptional targets in adult intestinal epithelium include c-Myc, CD44, and possibly cyclinD1.^{8,24,30} c-Myc immunostaining parallels that of β -catenin at E18.5 (Figure 3F) and provided one form of support for our conclusion that canonical Wnt signaling activity localizes in fetal villi. By contrast, at E18.5, both cyclinD1 and CD44 are restricted to intervillus regions and excluded from villi (Figure 4C), similar to the distribution observed in adult crypt-villus units (Figure 4D). These findings suggest that a part of the Wnt-associated intestinal gene expression program is initiated before reporter activity becomes evident in intervillus cells in TOP-GAL mice. They further imply that the 2 phases of gut epithelial Wnt activity result in distinct cellular outcomes.

Consequences of Premature β -Catenin Activation on Villus Morphogenesis

Tcf4^{-/-} mice have a specific, late defect in gut epithelial proliferation,²⁸ but early demise of β -catenin-null embryos^{31,32} and of other single and compound Tcf-deficient mice^{33–35} precludes simple investigation of the role of canonical Wnt signaling in early intestinal villi. It is, however, possible to derive some insight into this role by evaluating the consequence of forced and premature β -catenin activation in gut endoderm. We studied embryos from crosses between mice that carry a floxed (Fl), activating β -catenin allele¹⁶ and those expressing Cre recombinase under control of the endogenous *Shh* gene.¹⁵ Because *Shh* is expressed throughout the gut endoderm before E9,³⁶ progeny from such a mating are expected to deregulate β -catenin in most gut epithelial progenitors, which should consequently express ligand-independent Wnt activity. As expected, significant β -catenin appears in nuclei in the presumptive intestinal mucosa (Figure 5F and 5G), although nonuniform Cre expression yielded regions with unequivocal nuclear localization (Figure 5F and 5G, solid arrowheads) and other areas in which cytoplasmic β -catenin was not stabilized and the signal appeared mainly in cell membranes (Figure 5F and 5G, open arrowheads). Such patchy distribution provided useful internal controls and also revealed apparent lack of clonality in the first villi, as predicted from the model for emergence of a columnar epithelium (Figure 1A).

Control (*Shh*^{+/+}*Catnb*^{+/^{lox(ex3)}}) embryos showed intestinal villus architecture that is normal for E16.5 (Figure 5A and 5C), whereas villus formation was markedly abnormal in intestines from *Shh*^{Cre/+}*Catnb*^{+/^{lox(ex3)}} embryos of the same age. Histology revealed prominent structures that may represent merged villi or, more likely, a failure

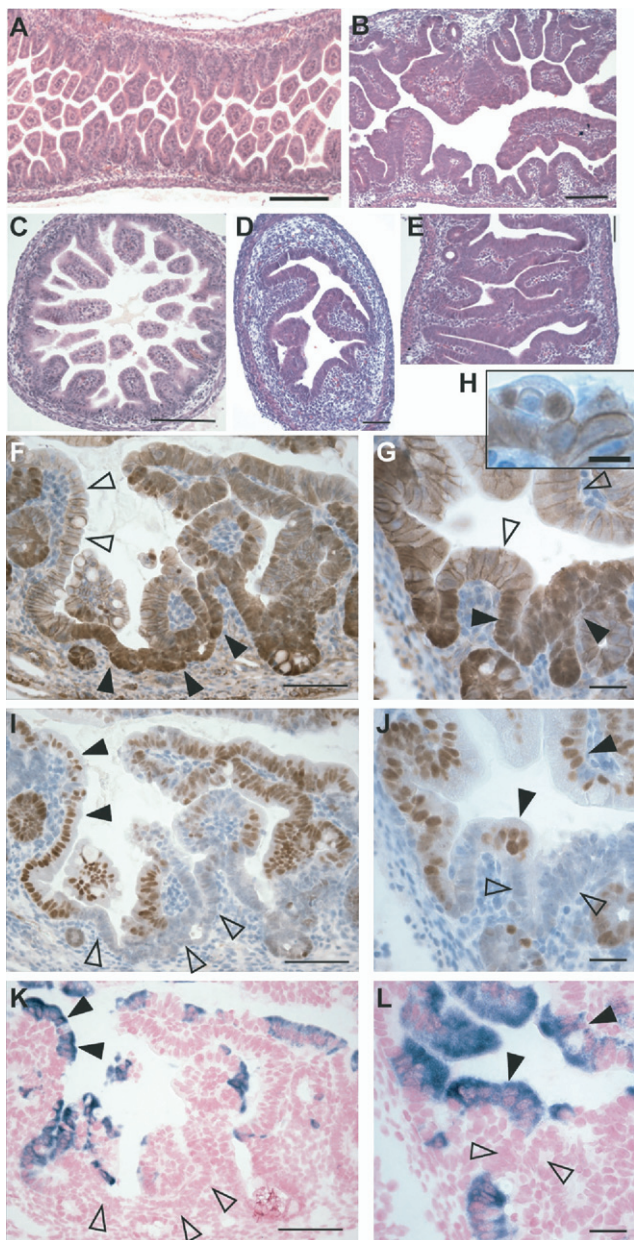


Figure 5. Severe villus dysmorphogenesis of fetal intestine upon premature β -catenin activation. (A–E) Longitudinal (A, B, and E) and transverse (C and D) sections of E16.5 small intestine from $Shh^{Cre/+} \times Catnb^{+/lox(ex3)}$ embryos. Representative tissues are shown from $Shh^{+/+} \times Catnb^{+/lox(ex3)}$ (A and C) and $Shh^{Cre/+} \times Catnb^{+/lox(ex3)}$ (B, D, and E) embryos; all samples were photographed at the same magnification, and all scale bars represent 300 μ m. (F–H) Low- (F) and high- (G and H) magnification images of β -catenin immunostaining, which distinguishes epithelial cells with activated β -catenin (nuclear localization, solid arrowheads) from cells without activation, in which β -catenin is excluded from the nucleus and concentrated along cell membranes (open arrowheads). (I–L) *Cdx2* immunostaining (I and J) and *ApoA1* in situ hybridization (K and L) reveal expression of these markers in villi with normal morphology (solid arrowheads) or cells lacking nuclear β -catenin and absence from regions showing nuclear β -catenin and villus dysmorphogenesis (open arrowheads). Images in F, I, and K are taken from neighboring sections (scale bars, 75 μ m). Images in G, J, and L are also taken from neighboring sections in a separate field and shown at higher magnification (scale bars, 50 μ m). Scale bar, in H, 25 μ m.

of individual villi to separate properly, and the gut lumen was accordingly narrowed (Figure 5B, 5D, and 5E). Villus morphogenesis requires formation of secondary lumina that separate villi from one another.^{13,14} The latter process seems to be arrested when β -catenin is activated prematurely in gut epithelial progenitors, and the findings resemble those described in mice lacking *ezrin* gene function.³⁷ Mutant embryos retain 1 normal *Shh* allele, thus the defects cannot be attributed to *Shh* loss, which in any case does not cause similar defects.³⁸ Moreover, well-organized villi were evident in patches in which the floxed *Catnb* allele had escaped recombination (examples in Figure 5B, top right and bottom right). Epithelial cells with normal (membranous, nonnuclear) β -catenin distribution differentiated more fully, as judged by robust expression of the intestinal marker *Cdx2* (Figure 5H and 5I; solid arrowheads) and expression of *ApoA1* mRNA in most *Cdx2*⁺ cells (Figure 5J and 5K). These markers were absent from areas of premature β -catenin activation (open arrowheads [Figure 5F, 5G, 5I, 5J, 5K, and 5L]), whereas *Ybx1*, a marker of epithelial immaturity (Figure 1B), was expressed here widely (data not shown). These results imply that the developing gut is sensitive to the period when Wnt signaling occurs: premature, unregulated activity limits cell differentiation and formation of secondary lumina, leading to severe villus dysmorphogenesis.

Discussion

We have used reporter mice and histologic and molecular markers to examine the transition from pseudostratified squamous to columnar epithelium in the mouse fetal gut. Whereas Wnt pathway functions in adult intestinal crypt homeostasis are well recognized, our results uncover 2 new features. First, Wnt signaling in intervillus cells, the precursors of crypts, is barely evident at birth and localizes fully in these cells only approximately 2 days later. Crypt invagination in rodents occurs over the first several days of life; until crypts are established, the mucosa is replenished by intervillus cells, where proliferation becomes restricted as early as E16 in the mouse. TOP-GAL and *Axin2-LacZ* reporter mice thus reveal that the earliest columnar epithelial cells proliferate in the apparent absence, or in response to undetectable levels, of Wnt signaling. One corollary of this conclusion is that proliferation arrest and epithelial atrophy observed in *Tcf4*^{-/-} mice²⁸ may reflect not only failure of physiologic Wnt signaling, as assumed, but possibly also Wnt-independent *Tcf4* functions. Acute ablation of Wnt signaling in adult mice rapidly arrests crypt cell replication and affirms the role of Wnts in gut homeostasis¹¹; determinants of adult mucosal renewal may thus differ from those in progenitors that initially populate the bowel epithelium. Alternatively, both fetal and adult gut epithelial progenitors may depend on levels of Wnt activity that are much lower than those observed in neigh-

boring areas such as in Paneth cells in adult small bowel and in differentiated villus cells in the perinatal period.

A second surprise is that canonical Wnt signals are transmitted in primordial intestinal villi, in differentiated cells that subsequently avoid Wnt signaling. We demonstrate this activity through both LacZ reporter activity and nuclear β -catenin localization and note that its properties differ notably from those encountered later in Wnt-dependent gut homeostasis. The zone of fetal intestinal Wnt signaling correlates closely with cell differentiation and expression of mature epithelial markers and not with cell proliferation. Although many villus cells continue to replicate, they do so for a limited number of cycles, and, after E16.5, most villus cells are postmitotic; these admixed populations show no differences at the level of nuclear β -catenin or of LacZ stain in TOP-GAL embryos. Consistent with the apparently different roles for Wnt signaling in perinatal villi and adult crypts, the corresponding gene expression programs are not identical. We identify *c-Myc* in E18.5 villi but not in intervillus cells, whereas other candidate Wnt targets (*CD44* and *cyclin D1*; Figure 4B) are excluded from differentiated villus cells and confined to the intervillus compartment from the outset. Furthermore, the Wnt signal in perinatal villi is likely transduced by the transcription factor *Tcf3*, which is expressed in all epithelial cells, unlike *Tcf4*, which is restricted to intervillus nuclei at the time of villus Wnt activity. Expression domains of Wnt ligands and their receptors and regulators have been mapped in detail in adult mouse gut and developing chick embryos,^{39–41} but there is limited appreciation of the ligand-receptor pairs responsible for epithelial homeostasis. The differences outlined here suggest that the earliest villi may respond to Wnt ligands different from those found in adult mucosal crypts.

Fetal villus morphogenesis is ostensibly normal in the absence of *Tcf3*, *Tcf4*, or both factors,^{28,34} which implies that villus Wnt signaling elicits effects not readily discerned by histology. Although the purpose of the brief phase of villus Wnt signaling is hence unclear, our findings should be regarded in light of the transition between undifferentiated endoderm, which lacks Wnt signals, and the villous mucosa. It is during this transition that epithelial cells establish a lasting relationship with underlying mesenchyme, a tissue that profoundly influences mucosal properties.⁴² One possibility is that epithelial cells that initially came in contact with Wnt ligands occupy the primordial villi before the mesenchyme demarcates pericryptal zones of Wnt release. Canonical Wnt signaling in these early villus cells may thus be a vestige of transient cellular contacts during villus morphogenesis, with responses different from those encountered in replication-competent epithelial progenitors. An alternative possibility is suggested by the observation that mucosal genes are activated in conjunction with the emergence of villi and in a distribution that unambiguously distin-

guishes villi from intervillus regions (Figure 1B). These early villus-lining cells do not originate in crypts, the niche in which programming for gut-specific differentiation occurs. If this programming depends on Wnts, then the transient phase of fetal villus Wnt activity might represent a crypt-independent mechanism to enable appropriate gene expression during development. In adult gut, Wnt signals regulate both epithelial cell proliferation and secretory cell differentiation,^{9–11} indicating broad influence over crypt functions. Although Wnt signals do not coincide with conversion of squamous to a columnar epithelium, they may prime the gut mucosa for tissue-specific gene expression, and, until Wnt signaling centers form near intervillus regions after birth, this function may be assumed by cells in primitive villi.

Appendix

Supplementary data

Supplementary data associated with this article can be found, in the online version, at [doi:10.1053/j.gastro.2007.04.072](https://doi.org/10.1053/j.gastro.2007.04.072).

References

- Cheng H, Leblond CP. Origin, differentiation and renewal of the four main epithelial cell types in the mouse small intestine. V. Unitarian theory of the origin of the four epithelial cell types. *Am J Anat* 1974;141:537–561.
- Potten CS, Booth C, Pritchard DM. The intestinal epithelial stem cell: the mucosal governor. *Int J Exp Pathol* 1997;78:219–243.
- Stappenbeck TS, Wong MH, Saam JR, Mysorekar IU, Gordon JI. Notes from some crypt watchers: regulation of renewal in the mouse intestinal epithelium. *Curr Opin Cell Biol* 1998;10:702–709.
- Sancho E, Batlle E, Clevers H. Signaling pathways in intestinal development and cancer. *Annu Rev Cell Dev Biol* 2004;20:695–723.
- Kinzler KW, Vogelstein B. Lessons from hereditary colorectal cancer. *Cell* 1996;87:159–170.
- Korinek V, Barker N, Morin PJ, van Wichen D, de Weger R, Kinzler KW, Vogelstein B, Clevers H. Constitutive transcriptional activation by a β -catenin-Tcf complex in APC^{-/-} colon carcinoma. *Science* 1997;275:1784–1787.
- Morin PJ, Sparks AB, Korinek V, Barker N, Clevers H, Vogelstein B, Kinzler KW. Activation of β -catenin-Tcf signaling in colon cancer by mutations in β -catenin or APC. *Science* 1997;275:1787–1790.
- van de Wetering M, Sancho E, Verweij C, de Lau W, Oving I, Hurlstone A, van der Horn K, Batlle E, Coudreuse D, Haramis AP, Tjon-Pon-Fong M, Moerer P, van den Born M, Soete G, Pals S, Eilers M, Medema R, Clevers H. The β -catenin/TCF-4 complex imposes a crypt progenitor phenotype on colorectal cancer cells. *Cell* 2002;111:241–250.
- Andreu P, Colnot S, Godard C, Gad S, Chafey P, Niwa-Kawakita M, Laurent-Puig P, Kahn A, Robine S, Perret C, Romagnolo B. Crypt-restricted proliferation and commitment to the Paneth cell lineage following *Apc* loss in the mouse intestine. *Development* 2005;132:1443–1451.
- Sansom OJ, Reed KR, Hayes AJ, Ireland H, Brinkmann H, Newton IP, Batlle E, Simon-Assmann P, Clevers H, Nathke IS, Clarke AR, Winton DJ. Loss of *Apc* in vivo immediately perturbs Wnt signaling, differentiation, and migration. *Genes Dev* 2004;18:1385–1390.

11. Pinto D, Gregorieff A, Begthel H, Clevers H. Canonical Wnt signals are essential for homeostasis of the intestinal epithelium. *Genes Dev* 2003;17:1709–1713.
12. Trier JS, Moxey PC. Morphogenesis of the small intestine during fetal development. *Ciba Found Symp* 1979;70:3–29.
13. Mathan M, Moxey PC, Trier JS. Morphogenesis of fetal rat duodenal villi. *Am J Anat* 1976;146:73–92.
14. Madara JL, Neutra MR, Trier JS. Junctional complexes in fetal rat small intestine during morphogenesis. *Dev Biol* 1981;86:170–178.
15. Harfe BD, Scherz PJ, Nissim S, Tian H, McMahon AP, Tabin CJ. Evidence for an expansion-based temporal Shh gradient in specifying vertebrate digit identities. *Cell* 2004;118:517–528.
16. Harada N, Tamai Y, Ishikawa T, Sauer B, Takaku K, Oshima M, Taketo MM. Intestinal polyposis in mice with a dominant stable mutation of the β -catenin gene. *EMBO J* 1999;18:5931–5942.
17. Lepourcelet M, Tou L, Cai L, Sawada J, Lazar AJ, Glickman JN, Williamson JA, Everett AD, Redston M, Fox EA, Nakatani Y, Shivdasani RA. Insights into developmental mechanisms and cancers in the mammalian intestine derived from serial analysis of gene expression and study of the hepatoma-derived growth factor (HDGF). *Development* 2005;132:415–427.
18. van Es JH, Jay P, Gregorieff A, van Gijn ME, Jonkheer S, Hatzis P, Thiele A, van den Born M, Begthel H, Brabletz T, Taketo MM, Clevers H. Wnt signalling induces maturation of Paneth cells in intestinal crypts. *Nat Cell Biol* 2005;7:381–386.
19. DasGupta R, Fuchs E. Multiple roles for activated LEF/TCF transcription complexes during hair follicle development and differentiation. *Development* 1999;126:4557–4568.
20. Kim BM, Buchner G, Miletich I, Sharpe PT, Shivdasani RA. The stomach mesenchymal transcription factor *Barx1* specifies gastric epithelial identity through inhibition of transient Wnt signaling. *Dev Cell* 2005;8:611–622.
21. Joyner AL. Engrailed, Wnt and Pax genes regulate midbrain-hind-brain development. *Trends Genet* 1996;12:15–20.
22. Okubo T, Hogan BL. Hyperactive Wnt signaling changes the developmental potential of embryonic lung endoderm. *J Biol* 2004;3:11.1–11.17.
23. Grossman ML. The glands of Brunner. *Physiol Rev* 1958;38:675–690.
24. He TC, Sparks AB, Rago C, Hermeking H, Zawel L, da Costa LT, Morin PJ, Vogelstein B, Kinzler KW. Identification of c-MYC as a target of the APC pathway. *Science* 1998;281:1509–1512.
25. Yu HM, Jerchow B, Sheu TJ, Liu B, Costantini F, Puzas JE, Birchmeier W, Hsu W. The role of *Axin2* in calvarial morphogenesis and craniosynostosis. *Development* 2005;132:1995–2005.
26. Jho EH, Zhang T, Domon C, Joo CK, Freund JN, Costantini F. Wnt/ β -catenin/Tcf signaling induces the transcription of *Axin2*, a negative regulator of the signaling pathway. *Mol Cell Biol* 2002;22:1172–1183.
27. Barker N, Huls G, Korinek V, Clevers H. Restricted high level expression of Tcf-4 protein in intestinal and mammary gland epithelium. *Am J Pathol* 1999;154:29–35.
28. Korinek V, Barker N, Moerer P, van Donselaar E, Huls G, Peters PJ, Clevers H. Depletion of epithelial stem-cell compartments in the small intestine of mice lacking Tcf-4. *Nat Genet* 1998;19:379–383.
29. Korinek V, Barker N, Willert K, Molenaar M, Roose J, Wagenaar G, Markman M, Lamers W, Destree O, Clevers H. Two members of the Tcf family implicated in Wnt/ β -catenin signaling during mouse embryogenesis. *Mol Cell Biol* 1998;18:1248–1256.
30. Tetsu O, McCormick F. β -catenin regulates expression of cyclin D1 in colon carcinoma cells. *Nature* 1999;398:422–426.
31. Huelsken J, Vogel R, Brinkmann V, Erdmann B, Birchmeier C, Birchmeier W. Requirement for β -catenin in anterior-posterior axis formation in mice. *J Cell Biol* 2000;148:567–578.
32. Lickert H, Kutsch S, Kanzler B, Tamai Y, Taketo MM, Kemler R. Formation of multiple hearts in mice following deletion of β -catenin in the embryonic endoderm. *Dev Cell* 2002;3:171–181.
33. Galceran J, Farinas I, Depew MJ, Clevers H, Grosschedl R. Wnt3a $^{-/-}$ -like phenotype and limb deficiency in *Lef1(-/-)* Tcf1 $(-/-)$ mice. *Genes Dev* 1999;13:709–717.
34. Gregorieff A, Grosschedl R, Clevers H. Hindgut defects and trans-formation of the gastro-intestinal tract in Tcf4 $(-/-)$ /Tcf1 $(-/-)$ embryos. *EMBO J* 2004;23:1825–1833.
35. Merrill BJ, Pasolli HA, Polak L, Rendl M, Garcia-Garcia MJ, Anderson KV, Fuchs E. Tcf3: a transcriptional regulator of axis induction in the early embryo. *Development* 2004;131:263–274.
36. Bitgood MJ, McMahon AP. Hedgehog and Bmp genes are coexpressed at many diverse sites of cell-cell interaction in the mouse embryo. *Dev Biol* 1995;172:126–138.
37. Saotome I, Curto M, McClatchey AI. Ezrin is essential for epithelial organization and villus morphogenesis in the developing intestine. *Dev Cell* 2004;6:855–864.
38. Ramalho-Santos M, Melton DA, McMahon AP. Hedgehog signals regulate multiple aspects of gastrointestinal development. *Development* 2000;127:2763–2772.
39. McBride HJ, Fatke B, Fraser SE. Wnt signaling components in the chicken intestinal tract. *Dev Biol* 2003;256:18–33.
40. Theodosiou NA, Tabin CJ. Wnt signaling during development of the gastrointestinal tract. *Dev Biol* 2003;259:258–271.
41. Gregorieff A, Pinto D, Begthel H, Destree O, Kielman M, Clevers H. Expression pattern of Wnt signaling components in the adult intestine. *Gastroenterology* 2005;129:626–638.
42. Keding M, Duluc I, Fritsch C, Lorentz O, Plateroti M, Freund JN. Intestinal epithelial-mesenchymal cell interactions. *Ann N Y Acad Sci* 1998;859:1–17.

Received December 19, 2006. Accepted April 19, 2007.

Address requests for reprints to: Ramesh A. Shivdasani, MD, PhD, Dana-Farber Cancer Institute, 44 Binney Street, Boston, Massachusetts 02115. e-mail: ramesh_shivdasani@dfci.harvard.edu; fax: (617) 632-5417.

Supported in part by grant R01DK61139 from the National Institutes of Health (to R.A.S.).

The authors thank Khash Khazaie for helpful discussions; Rudi Grosschedl for *Lef1* antiserum; Walter Birchmeier for *Axin2^{LacZ}* knockin mice; Isabelle Miletich and Paul Sharpe for processing tissue from these animals; Andrew McMahon for *Shh^{+/-}/Cre × Catnb^{+/-lox(ex3)}* mouse embryos. BrdU antibody was obtained from the Developmental Studies Hybridoma Bank, developed under the auspices of the NICHD and maintained by the University of Iowa.

Authors B.M.K. and R.A.S. designed and performed the research, analyzed the data, and wrote the paper, and J.M. and M.M.T. provided essential reagents.

Conflicts of interest: The authors have no conflicts of interest to disclose.