

European Public Local Authorities' Network for
driving the Energy Transition



D5.6 - Evaluation report with assessment criteria matrix

Author:

Matthias WATZAK-HELMER (FEDARENE)

August, 2022 (M12) - WP5, D5.6



This project has received funding from the European Union's Horizon 2020 research and innovation programme under grant agreement N° 101032450. The views expressed in this publication are the sole responsibility of the author/s and do not necessarily reflect the views of the European Commission.

Technical References

Project Acronym	ePLANET
Project Title	EUROPEAN PUBLIC LOCAL AUTHORITIES' NETWORK FOR DRIVING THE ENERGY TRANSITION

Deliverable No.	D5.6
Dissemination Level	PU
Work Package	WP5 - REPLICATION AND NETWORKING
Lead beneficiary	04 (FEDARENE)
Contributing beneficiary(ies)	01 (CIMNE), 02 (ICEAN)
Due date of deliverable	31 August 2022
Actual submission date	18 August 2022

Authors	Matthias WATZAK-HELMER (FEDARENE)
Contributors	Gerard LAGUNA (CIMNE), Marta CHAFER (ICAEN)



Versions

Version	Date	Changes	Edited by
0.1	22/07/22	Full draft version	Matthias Watzak-Helmer
0.2	09/08/22	Review and Comments	Marta Chàfer Nicolàs Gerard Laguna Benet
1.0	18/08/22	Final Version	Matthias Watzak-Helmer



Content

1	Application and evaluation process	9
1.1	Application procedure	9
1.1.1	<i>Application procedure timetable</i>	<i>9</i>
1.2	Evaluation process	9
1.2.1	<i>Timetable of the process.....</i>	<i>9</i>
1.2.2	<i>Selection criteria</i>	<i>10</i>
1.2.3	<i>Communication of the results with the applicants</i>	<i>11</i>
1.2.3.1	<i>Communication with applicants during the first phase</i>	<i>11</i>
1.2.3.2	<i>Communication with applicants during the second phase</i>	<i>12</i>
2	Results of the Open Call	15
2.1	Overview submitted applications	15
2.2	Evaluation results	16
3	Annex.....	17
3.1	Guideline for applicants	17
3.1.1	<i>What is the ePLANET project about?.....</i>	<i>17</i>
3.1.1.1	<i>ePLANET - Background and overall objective</i>	<i>17</i>
3.1.1.2	<i>ePLANET team</i>	<i>18</i>
3.1.1.3	<i>ePLANET pilot regions and their activities</i>	<i>19</i>
3.1.2	<i>Why to apply for the ePLANET twinning programme?.....</i>	<i>23</i>
3.1.2.1	<i>ePLANET Governance innovation</i>	<i>23</i>
3.1.2.2	<i>ePLANET platform</i>	<i>26</i>
3.1.2.3	<i>ePLANET Joint exchange activities.....</i>	<i>28</i>
3.1.3	<i>What are the participation modalities?.....</i>	<i>30</i>
3.1.3.1	<i>Who is eligible to apply?.....</i>	<i>30</i>
3.1.3.2	<i>What is the duration of the twinning programme?.....</i>	<i>30</i>
3.1.3.3	<i>What costs will be covered?.....</i>	<i>30</i>
3.1.3.4	<i>Which language will be spoken?</i>	<i>31</i>
3.1.3.5	<i>What do successful applicants commit to contribute to the project?</i>	<i>31</i>
3.1.4	<i>How does the application and evaluation work?</i>	<i>31</i>
3.1.4.1	<i>Where to apply?.....</i>	<i>31</i>
3.1.4.2	<i>What information should be included in the application?</i>	<i>31</i>
3.1.4.3	<i>Timeline for the applications and evaluation process.....</i>	<i>31</i>



3.1.4.4	<i>Evaluation process</i>	32
3.1.5	<i>Annex</i>	34
3.1.5.1	<i>Description of the ePLANET partners</i>	34
3.1.5.2	<i>Detailed description of the ePLANET platform modules</i>	37
3.1.5.3	<i>Memorandum of Adhesion</i>	39
3.2	<i>EU Open Call on EUsurvey</i>	40
3.2.1	<i>Application form Open Call for interested regions</i>	40
3.2.2	<i>Application form</i>	41
3.3	<i>Communication with the applicants</i>	46
3.3.1	<i>Letter of Acceptation</i>	46
3.3.2	<i>Letter of additional activities offered</i>	47
3.3.3	<i>Memorandum of Adhesion</i>	49



Executive Summary

ePLANET project is a Coordination and Support Action cofounded by the European Commission through Horizon 2020 program. ePLANET aims to deploy a new clustering governance for energy transition based on a digital framework to share harmonized information, facilitating the adoption of coordinated energy transition actions by the European public sector.

This document describes each step of the process of the open call for follower regions of the ePLANET project including the duration of each phase. Further, the evaluation process including the assessment criteria matrix is displayed and the selection criteria to elaborate the most promising applications described.

Finally, the results of the open call are highlighted. The list of all 26 applications from 7 different countries is provided as well as the final list of selected and invited followers of the ePLANET project provided. The standardised communication with the applicants to invite them to join as followers or to include them for further activities is listed.



List of Tables

Table 4-1 ePLANET Open Call - Eligibility Criteria List	10
Table 1-1 ePLANET team	18
Table 1-2 overview of ePLANET activities (use cases) in the pilot regions.....	20
Table 4-1 ePLANET Open Call - Eligibility Criteria List	33
Table 4-2 ePLANET Open Call -Qualification Criteria List.....	33
Table 4-3 ePLANET Open Call - Desirable Qualification Criteria List.....	34

List of Figures

Figure 1-1 Communication with Expression of Interest Applicants	12
Figure 2-1 Country of origin of received applications	15
Figure 2-2 List of applicants	16
Figure 2-3 List of selected ePLANET follower regions	16
Figure 3-1 Governance structure scheme.....	25
Figure 3-2 Building energy performance, building data visualization.....	27
Figure 3-3 Building energy performance, building consumption evolution.....	27
Figure 3-4 SECAPs visualization, estimated consumption vs real consumption.....	27
Figure 3-5 SECAPs visualization, yearly municipal energy consumption per energy source. ...	27
Figure 3-6 GIS application on Crete Island indicating the wind power stations	28
Figure 3-7 GIS application on the region of Girona, potential PV rooftop	28
Figure 3-8 GIS application, CO ₂ emissions visualization per municipality in Girona	28
Figure 3-9 Draft Memorandum of Adhesion.....	39
Figure 3-10 ePLANET open call for interested regions 1/2	40
Figure 3-11 ePLANET open call for interested regions 2/2	41
Figure 3-12 ePLANET Open Call Application form general description	42
Figure 3-13: ePLANET Open Call Application form description of the applicant	43
Figure 3-14 ePLANET Open Call Application form motivation of the applicant	44
Figure 3-15 ePLANET Open Call Application form skills of the applicant.....	45
Figure 3-16 letter of acceptance	46
Figure 3-17 Letter of additional activities (ENG).....	47
Figure 3-18 Letter of additional activities (CAT)	48
Figure 3-19 Memorandum of Adhesion (ENG)	49
Figure 3-20 Memorandum of Adhesion (CAT).....	50



Abbreviations and acronyms

ABBREVIATION OR ACRONYM	DESCRIPTION
BEI	Baseline Emissions Inventory
CoM	Covenant of Mayors
DSO	Distribution System Operators
ESCO	Energy Service Company
ET	Energy Transition
ETM	Energy Transition Measure
KPI	Key Performance Indicator
LEC	Local Energy Community
MoA	Memorandum of Adhesion
MEI	Monitoring Emissions Inventory
PA	Public Authority
PAET	Public Advisor on Energy Transition
RES	Renewable energy sources
SECAP	Sustainable Energy Climate and Action Plan



1 Application and evaluation process

1.1 Application procedure

The application procedure is described in detail in the Guideline for Applicants (see chapter 3.1). The overview of the timeline is highlighted below.

1.1.1 Application procedure timetable

The selection of follower regions was done according to the timeline below. The initial deadline for submission of applications was changed from 20.06 to 30.06. The cause of this deadline extension was the insufficient number of applications after the first promotion activities.

30.03.2022 - 29.05.2022: Open Call - Expression of interest

30.05.2022 - 30.06.2022 ~~20.06.2022~~: Open Call - Submission of applications

July 2022: Evaluation of Applications

31.07.2022: Results of the evaluation shared with all applicants

August 2022: MoA signed by successful follower regions

From September 2022 on the onboarding of follower regions will start to best prepare the close cooperation. The onboarding process will include analysis of regional and local authority needs and motivation for implementing collaborative data exchange or collection. A report on the selected Follower Regions' Needs will be prepared by FEDARENE in collaboration with the pilot Partners and used for modelling the subsequent activities.

1.2 Evaluation process

The evaluation process was established to identify around 6 of the most promising applications to become an ePLANET follower region. To ensure a transparent process, the timetable and selection criteria have been agreed by the whole team and described in the open call Application Guideline (see chapter 3.1).

1.2.1 Timetable of the process

Below the timeline of the evaluation process is described including all relevant dates and decisions.

01.07.2022: Download of all applications from the EU survey platform

01.-12.07.2022: Screening of the applications and preparation of the evaluation meeting with pilot regions



13.07.2022: Evaluation meeting, including definition of approach to reduce the number of applications and identify most promising candidates

13.-22.07.2022: ICAEN contacted Spanish applicants to clarify motivation and identify most promising applicants

22.07.2022: Invitation sent to successful applicants

18.08.2022: Response sent to all non-selected applicants

1.2.2 Selection criteria

The selection was performed based on the Assessment criteria matrix, a concise list of criteria agreed by all project partners, displayed in Table 1-1. Further, the focus was laid on a wide replication within Europe and to applicants who are familiar with English to support the exchange during the EU wide events offered by ePLANET (e.g., Stakeholder Forum, study visit). Finally, the motivation of the Spanish applicants was tested during a direct communication with ICAEN (& CIMNE) to identify the most promising applicant from Spain.

Table 1-1 ePLANET Open Call - Eligibility Criteria List

Nº	Eligibility Criteria	Check:
A.1	The applicant is established in a Member State of the European Union or an associated European Union country	Yes / No
A.2	The applicant is (1) a local or regional public authority or (2) a public (utility) company or (3) a public or private organisation working in close collaboration with the local or regional public authorities or public utilities (e.g., energy agency)	Yes / No
A.3	The applicant has submitted Application Form respecting the deadline for applications, 30.06.2022, 24:00 CET (Brussels time, GMT+1)	Yes / No
A.4	The Application Form has been submitted electronically through the form on the EU survey website https://ec.europa.eu/eusurvey/runner/ePLANET_twinningregion	Yes / No
A.5	All required fields in the Application Form are completed	Yes / No
A.6	The applicant does not have any potential conflict of interest with the ePLANET Open Call selection process	Yes / No
Nº	Qualification Criteria	Score
B.1	Applicant´s interest in the ePLANET project related topics: - Energy and Climate Action Plans	0 (low) to 5 (high)



	<ul style="list-style-type: none"> - Innovative multi-level governance - Digitalisation and GIS visualisation - Sharing of Energy Transition measures data 	
B.2	Applicant's willingness to share knowledge and experience with other public authorities	Yes / No
B.3	Applicant's human, technical and time capacity to take an active part in the ePLANET activities.	Yes / No
Nº	Desirable Qualification Criteria	Score
C.1	Applicant's experience in project language English and national language of the pilot regions (Czech, Greek, Spanish).	0 (low) to 4 (high)

1.2.3 Communication of the results with the applicants

The communication with all applicants to share the evaluation results was standardised. Every successful received the same communication. Every non-successful applicant was invited to stay in contact with the project.

1.2.3.1 *Communication with applicants during the first phase*

To all applicants who expressed their interest during the first phase of the open call, the invitation (see Figure 1-1) was sent per Email on June 1st 2022.



matthias.watzak@fedarene.org

From: matthias.watzak@fedarene.org
Sent: Wednesday, 1 June 2022 10:39
To: [REDACTED]
Subject: ePLANET Open Call Application form opened

Dear [REDACTED]

Thank you very much for the interest in joining the ePLANET project as a regional partner. I can inform you that the Application form as follower region of the project is now available on the EU survey platform:
https://ec.europa.eu/eusurvey/runner/ePLANET_twinningregion

If you need any help with your application, or in case of any other question, please do not hesitate to contact me.

We would be very happy to welcome you on board facilitating the regional Energy Transition.

Best regards,
 Matthias Watzak-Helmer



Matthias Watzak-Helmer

Project Manager | FEDARENE

P: [+32 2 646 82 10](tel:+3226468210)

M: [+32 456 38 50 27](tel:+32456385027)

M: [+43 670 601 0813](tel:+436706010813)

S: FEDARENE_Matthias Watzak-Helmer

A: Rue de Stassart 131, 1050 Brussels

fedarene.org



Please consider the environment before printing the attached documents

Figure 1-1 Communication with Expression of Interest Applicants

1.2.3.2 Communication with applicants during the second phase

The communication after the second phase was different for the successful applicants and for the non-successful applicants. The template for the Emails is shown below. The emails included two attachments (Memorandum of Adhesion and Letter of acceptance or Letter of additional activities offered) which can be seen in the Annex 3.3.



TEMPLATE INTRO EMAIL

Recipient: Successful Applications

Attachments: Memorandum of Adhesion, Letter of acceptance

Subject: ePLANET open call for twinning regions results

Dear Madam/Sir,

Congratulations! Your organisation has been selected as a regional partner to join as an ePLANET follower. You will be able to benefit from tailored support including study visits to one of the project regions, peer to peer guidance and participation in webinars and workshops. Please find enclosed a letter of acceptance with more details.

To officially confirm your interest and capacity to join, we kindly ask you to sign the attached Memorandum of Adhesion.

Kind regards,

Recipient: Unsuccessful Applications

Attachments: Memorandum of Adhesion, Letter of additional activities offered

Subject: ePLANET open call for twinning regions results

Dear Madam/ Sir,

Thank you for applying! You have been selected to benefit from selected ePLANET activities. Nevertheless, we regret to inform you that there have been too many very strong applications and we cannot offer you an invitation to a study visit to one of the project pilot regions. Please find enclosed a letter with additional activities we can offer you to stay engaged.

Kind regards,



Recipient: Unsuccessful Applications from Catalan region

Attachments: Memoràndum d'adhesió, Resultats de la convocatòria

Subject: convocatòria ePLANET, resultats de les regions d'agermanament

Benvolguts,

Gràcies per la vostra sol·licitud! Heu estat seleccionats per beneficiar-vos de les diferents activitats del projecte ePLANET. No obstant això, lamentem informar-vos que hi ha hagut un volum molt alt de sol·licituds i no podem oferir-vos la invitació per la visita estudi a una de les regions pilot del projecte. Si us plau, trobareu una carta adjunta amb activitats addicionals que us podem oferir per mantenir-vos compromesos en el projecte.

Salutacions cordials,



2 Results of the Open Call

In this chapter, the results will be described. This includes the submitted applications, the evaluation of the applications and the matchmaking of the follower regions.

2.1 Overview submitted applications

In total 3 applicants registered during the first phase of the open call. One of them applied during the second phase. During the second phase in total 26 different applications have been received from 7 different countries shown in Figure 2-1.

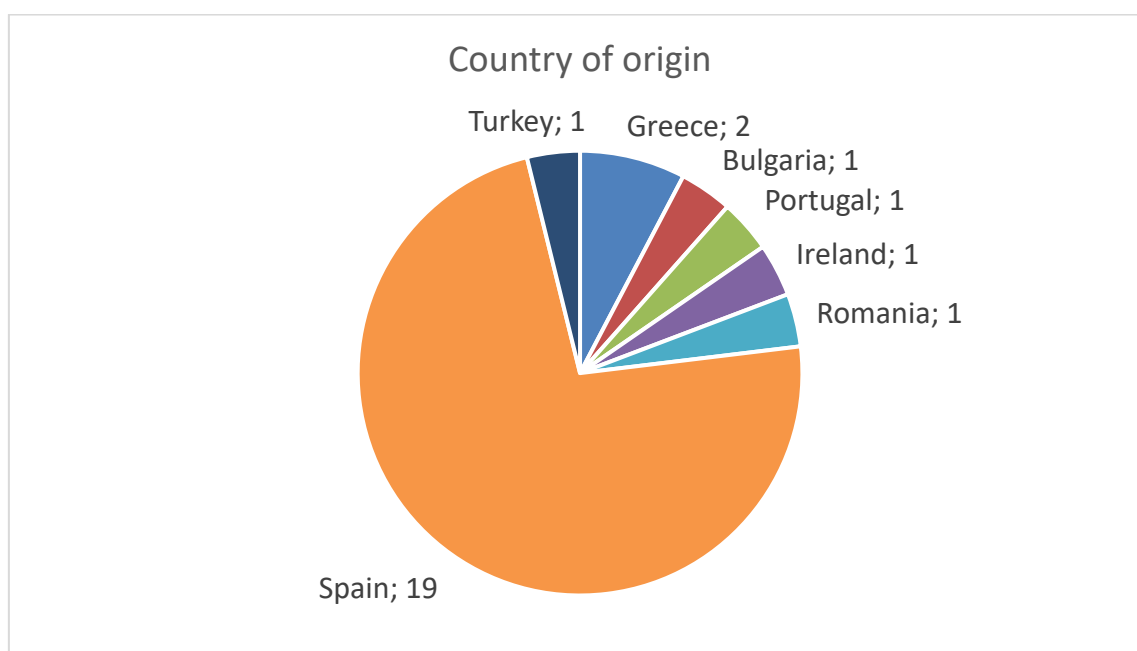


Figure 2-1 Country of origin of received applications

In Figure 2-2 the list of applications is shown, including their region, the organisation and type of organisation.



Country	Region	Name of your organization	Type of organisation
Greece	ANO LIOSIA	MUNICIPALITY OF FYLI	Local Authority (Cluster of Local Authorities)
Greece	REGION OF CENTRAL MACEDONIA	REGIONAL DEVELOPMENT FUND OF CENTRAL MACEDONIA	Regional Authority
Ireland	SouthEast	3 Counties Energy Agency (3CEA)	Public Organisation (Energy Agency, Power company)
Romania	Bucharest	Agency for Energy Efficiency and Environmental Protection	Public Organisation (Energy Agency, Power company)
Bulgaria	Varna Black Sea	Black Sea regional agency for energy management	Public Organisation (Energy Agency, Power company)
Portugal	Tâmega e Sousa	Comunidade Intermunicipal do Tâmega e Sousa	Local Authority (Cluster of Local Authorities)
Spain	Barcelona (Baix Llobregat)	Consell Comarcal del Baix Llobregat	Local Authority (Cluster of Local Authorities)
Spain	Maresme - Barcelona	Consell Comarcal del Maresme	Regional Authority
Spain	Girona	Ajuntament de Beuda	Local Authority (Cluster of Local Authorities)
Spain	Catalunya	Ajuntament d'Ascó	Local Authority (Cluster of Local Authorities)
Spain	Catalunya	Ajuntament d'Ulldemolins	Local Authority (Cluster of Local Authorities)
Spain	Lleida	Consell Comarcal Pallars Jussà	Local Authority (Cluster of Local Authorities)
Spain	Catalunya	Ajuntament d'Olvan	Local Authority (Cluster of Local Authorities)
Spain	Islas Canarias	Universidad de La Laguna	Public Organisation (Energy Agency, Power company)
Spain	Bages (Catalunya)	Agència Comarcal de l'Energia del Baix	Local Authority (Cluster of Local Authorities)
Spain	Catalunya	Ajuntament d'Àger	Local Authority (Cluster of Local Authorities)
Spain	Catalonia	Preixens Town Council	Local Authority (Cluster of Local Authorities)
Spain	Camp de Tarragona	Ajuntament de Vinyols i els Arcs	Regional Authority
Spain	Catalunya	Comunitat de Municipis del Segrià Sec	Local Authority (Cluster of Local Authorities)
Spain	Catalunya	Ajuntament de Les Piles	Local Authority (Cluster of Local Authorities)
Spain	Catalunya	AJUNTAMENT D'ARTÉS	Local Authority (Cluster of Local Authorities)
Spain	Catalunya	Ajuntament de Soriguera	Local Authority (Cluster of Local Authorities)
Spain	CATALUNYA - ALT EMPORDÀ	AJUNTAMENT DE PONTÓS	Local Authority (Cluster of Local Authorities)
Spain	Conca de Barberà	ACECB	Public Organisation (Energy Agency, Power company)
Spain	Catalunya	Ajuntament de Puig-reig	Local Authority (Cluster of Local Authorities)
Turkey	Izmir	Karsiyaka Municipality	Local Authority (Cluster of Local Authorities)

Figure 2-2 List of applicants

2.2 Evaluation results

Based on the selection criteria described in chapter 1.2.2 the list of applications has been reduced to finally 7. The selected regions are shown in Figure 2-3. These 7 applicants received an invitation to become an ePLANET follower. 6 regions replied and signed the Memorandum of Adhesion to express their will to cooperate, 1 applicant (Varna Black Sea) did not reply before the submission of the deliverable. Still the targeted number of follower regions could be found.

Country	Region	Name of your organization	Type of organisation
Greece	ANO LIOSIA	MUNICIPALITY OF FYLI	Local Authority (Cluster of Local Authorities)
Greece	REGION OF CENTRAL MACEDONIA	REGIONAL DEVELOPMENT FUND OF CENTRAL MACEDONIA	Regional Authority
Ireland	SouthEast	3 Counties Energy Agency (3CEA)	Public Organisation (Energy Agency, Power company)
Romania	Bucharest	Agency for Energy Efficiency and Environmental Protection	Public Organisation (Energy Agency, Power company)
Bulgaria	Varna Black Sea	Black Sea regional agency for energy management	Public Organisation (Energy Agency, Power company)
Portugal	Tâmega e Sousa	Comunidade Intermunicipal do Tâmega e Sousa	Local Authority (Cluster of Local Authorities)
Spain	Barcelona (Baix Llobregat)	Consell Comarcal del Baix Llobregat	Local Authority (Cluster of Local Authorities)

Figure 2-3 List of selected ePLANET follower regions



3 Annex

3.1 Guideline for applicants

The application guideline shall support applicants during the application process and describe the ePLANET project and its ambitions. It introduces the ePLANET project, its objectives, the team and the regions working on implementing the projects innovations.

ePLANET offers a wide range of activities for future regional partners to support the regional energy transition, including Governance Innovations and an online platform for data visualization and analysis of energy performance of public buildings. Additionally, future partners will benefit from joint exchange activities, including study visits.

The Application Guideline highlights the modalities to participate and benefit from the project and describes the transparent application process. This includes a list of evaluation criteria for eligibility criteria, qualification criteria and desirable qualifications of the applicants.

ePLANET project is a Coordination and Support Action cofounded by the European Commission through Horizon 2020 program. ePLANET aims to deploy a new clustering governance for energy transition based on a digital framework to share harmonized information, facilitating the adoption of coordinated energy transition actions by the European public sector.

3.1.1 What is the ePLANET project about?

3.1.1.1 *ePLANET - Background and overall objective*

One of the main challenges to achieve the Energy Transition objectives is to improve the coordination between local authorities and regional governments in order to optimise the decision-making process, coherence and consistency of the implementation of energy transition measures in towns and cities.

However, the platforms used by each government are heterogeneous, which leads to a loss of information and difficulties to share data and engage communities. ePLANET is addressing this challenge, and facilitates and eases the deployment of coordinated energy transition actions by the public sector. The project will use the most innovative tools in artificial intelligence and big data together with an innovative clustering governance to boost Energy Transition Plans at the municipal level. Additionally, it will foster the digitalisation of energy data available in dispersed data sources, of energy transition measures and Sustainable Energy and Climate Action Plans (SECAPs), enabling an ecosystem of data and tools to support decision-making on energy transition.

The overall objectives of ePLANET are:

- to define and establish a transparent and coherent information sharing framework among public authorities.



- to deploy multi-level working groups of related public authorities and stakeholders for sharing of information and to enable a collaborative approach in development and updating of Energy Transition plans.
- to enable digitalization of the energy transition plans of the public authorities as base for coherence, sharing, coordination and integration.
- to support new adopters and consolidate existing networks.
- to institutionalize ePLANET networks and multi-level working groups.

More information can be found on the website: <https://www.eplaneth2020.eu/>

3.1.1.2 *ePLANET team*

The ePLANET team covers 6 different EU countries (ES, GR, BE, DE, CZ, FR) and consists of 10 partners:

Table 3-1 ePLANET team

ABBREVIATION	COMPANY NAME	COUNTRY	WEBSITE LINK
REGIONAL PARTNERS			
DDGI	Diputació de Girona	ES	https://www.ddgi.cat/web/
EAZK	Energy agency of the Zlín Region	CZ	https://www.eazk.cz/en/
RDFC	Regional Development Fund of Crete	GR	https://pta.gr/
EUROPEAN NETWORKS			
ICLEI	Local Governments for Sustainability	DE	https://iclei-europe.org/
FEDARENE	The European Federation of Agencies and Regions for Energy and the Environment	BE	https://fedarene.org/
TECHNICAL PARTNERS			
CIMNE	International Centre for Numerical Methods in Engineering	ES	https://www.cimne.com/
3OC	Three o'clock	FR	https://threeoclock.co/
ICAEN	Catalan Institute for Energy	ES	https://icaen.gencat.cat/ca/inici/
CRES	The Centre for Renewable Energy Sources and Energy Saving	GR	http://www.cres.gr/cres/index.html
LIMA	Low Impact Mediterranean Architecture	ES	http://www.lima.cat/



A more detailed description of all partners can be found in the annex chapter 3.1.5.1, on the websites of each partner as well on the ePLANET website <https://www.eplaneth2020.eu/>.

3.1.1.3 ePLANET pilot regions and their activities

The ePLANET pilot regions will improve and speed up the ET with the use of the tools developed within the ePLANET project. They will provide valuable feedback and guidance to ensure that the ePLANET results are tailored to the needs of regions. The pilot regions have different starting points concerning governance infrastructure, data availability and Action Plans and are working on different solutions. This will ensure that the results can be implemented in a wide range of different regions and support the regional energy transition in a wide variety of European regions. Table 3-2 provides an overview of the implementation actions of the ePLANET pilot regions. A detailed description of the perspective of each region is provided below.



Table 3-2 overview of ePLANET activities (use cases) in the pilot regions

Topic	Crete	Girona	Zlín region
Digitalization of SECAP drafting and monitoring process	Improve the update and monitoring of SECAPs through advanced web-based environments	Improve the update and monitoring of SECAPs through advanced web-based environments	
Analysis of the energy performance of the public building stock	Implement a system to track and assess the energy consumption of public buildings belonging to several municipalities and the regional administration of Crete		Implement a system to track and assess the energy consumption of public buildings belonging to several municipalities and the Zlin region
Geo-tools for the promotion of energy communities (REC & LEC)	Geographically based web visualisations of building energy consumption and renewable energy generation aggregated at municipality level	Creation of a geo referenced visualisation tool to support the planning of local energy communities (PV and biomass as RES) and the energy transition of the building sector	Showcase of the city of Hostětín as a sustainable energy community
PV potential analysis for public buildings			Set up a GIS based web environment to show the PV potential and the self-consumption ratio of the public buildings of Zlin region

Crete

Starting point

Crete is the largest and most populous island in Greece, and the fifth most populous Region in Greece, with around 625.000 inhabitants. The consortium partner RDFC (Regional Development



Fund of Crete) has been established in 1998 as a supporting entity of the Crete Region development planning (including energy planning). RDFC also operates the Regional Energy Agency of Crete (REAC) which supports the municipalities and the Region of Crete with energy advice as well as acts as the CoM territorial coordinator in the whole island, a signatory of the Pact of Islands and a member of the ManagEnergy and the Clean Energy for Islands initiative. Crete is currently updating their Energy Action Plan (2016) into a new Energy Transition Plan.

Energy Transition of the public sector in Crete is characterized by a vast adoption of CoM (18 of the 24 local authorities are CoM signatories, 16 of them with submitted Action Plans) and, at the same time, by little monitoring of the implemented actions and relatively few investments in ET. Energy governance is mainly unidirectional, from region to local authorities (ET strategy is defined by RDFC, and later adopted in Action Plans by local authorities), with limited feedback from the local authorities to the regional entity and neither an established information sharing procedure nor intra-local coordination.

ePLANET platform developments in Crete

The capacity building of local officers, the promotion of a harmonized system to monitor and evaluate ETM and Action Plans progress, the deployment of a vertical and horizontal governance framework for local authorities, and the deployment of a sharing information platform will foster the multi-level governance of the Region and will increase the financial opportunities for the adoption of ET measures by the whole public sector in Crete.

For the Crete pilot, Baseline Emissions Inventory (BEI) data extracted from the CoM Action Plans at the municipal level will be available since there are 16 active SECAPs on the island of Crete. In addition, monthly energy consumption data at the municipal and building level is available, as well as a database of existing PV plants and a study of PV potential per municipality. Data from the public cadastre will be included in the ePLANET platform. This data contains geo-references which allows the use of geo-tools, to create web visualizations of building energy consumption and renewable energy generation aggregated at the municipality level.

Girona

Starting point

Diputació de Girona (Girona Provincial Council, acronym DDGI) is the local public authority for the Girona province and provides technical, financial and administrative support to all the 221 municipalities within their operational area. DDGI is a CoM Coordinator and one of their main stakeholders in the province of Girona. It supports all municipalities to sign, join and develop their own Sustainable Energy (and Climate) Action Plan. Since 2008, from a total number of 221 local councils, 209 have joined the CoM initiative. 190 of them have approved an Action Plan, and 50 of them a monitoring report.

DDGI also plays a key role in providing technical and financial aid to implement mitigation and adaptation actions via publications, toolkits and services (“Eines PAESgi” toolkit, “Services Plan” for the promotion of energy efficiency and renewable energies, etc.), and the promotion of forest biomass and various grants and subdivides campaigns.



DDGI provides technical and legal assistance to create Local energy communities (LEC). More than 10 municipalities are interested in creating LEC, and four of them (La Celler de Ter, Ruplà, Cornellà de Terri and Amer) have received grants from the province to speed up the creation of these LECs.

ePLANET platform developments in Girona

In the case of Girona, the historical energy consumption and emissions data at municipal and landscape unit level, are going to be extracted from the Excels containing the Baseline Emissions Inventory, which are necessary for the drafting of Action Plans, as identified by the CoM.

Energy, water, and gas consumption for all building blocks of the pilot municipalities will be provided by Distribution System Operators (DSOs), aggregated at monthly or yearly level. Each building block address identified by the DSOs will be matched to the Spanish cadastre. In this way, it will be possible to match the energy and water consumption values to the building characteristics found in the cadastre. Through the cadastre, it will also be possible to obtain the exact geographical coordinates of a building block, and therefore visualize data related to that block on a map.

More detailed energy consumption data will also be available for buildings belonging to the public administration. For these buildings, the DSOs will disclose hourly energy consumption values, unlocking more advanced analytics.

With the consumption data from the DSOs and the studies of solar potential and the biomass boilers potential, it will be possible to identify the energy demand and the local RES potential. This identification enables matching the energy need and the RES potential to help promote Local Energy Communities.

Zlín region

Starting point

The Zlín Region is a frontier region with both agriculture and industrial tradition and a great density of settlements. There are 307 local authorities, with a population of 582.555 inhabitants (2020). The consortium partner EAZK (Energy Agency of the Zlín Region) was established in 2006 as an implementing tool of the Zlín Region energy policy.

EAZK also supports both the region and the municipalities with energy advice management and strategic advice to gain financial sources from existing funds to implement energy efficiency measures and increase the renewable energy share in the Zlín Region. EAZK's supporting role is well known to all of the municipalities, as a great majority was somehow supported by EAZK in the last 15 years in their measures related to energy efficiency projects development, renewable energy development, energy planning, etc. Only in 2019, EAZK processed 35



investment projects for the Zlín Region and municipalities of the Zlín Region with the total value around 9,8 mio EUR.

The ET vertical governance in Zlín region is solid and well-established. Energy transition strategy in the region is mainly defined by EAZK, and later adopted by the different local authorities through their Sustainable Action Plans. However, there is a margin to improve horizontal governance of energy transition in the region. There are no signatories of Covenant of Mayors at local level (EAZK is supporting partner since 2014), and most of the energy efficiency measures rely on the effectiveness and active support of EAZK to adapt local level policies and goals to the energy transition. The capacity building of local officers, the deployment of a horizontal governance framework for local authorities, and the deployment of a sharing information platform will foster the multi-level governance of the region.

ePLANET platform developments in Zlín region

In the Zlín region, monthly energy consumption data for specific buildings is available, additional as well as building information, such as geographic location or total floor area which will be provided through Excel files.

Additionally, the energy consumption and energy production from Hostětín will be showcased as a sustainable energy community example.

Finally, the solar PV potential for specific rooftops in the Zlín region will be determined based on LIDAR scans of the relevant municipalities.

3.1.2 Why to apply for the ePLANET twinning programme?

After your region has submitted a successful application, the ePLANET project will offer a lot of encouraging opportunities. Besides a direct contact to the whole project team, additional opportunities to cooperate with one of our pilot regions will be offered. The benefits cover a wide range of actions including online formats and in person meetings in the fields of:

- Innovative governance,
- Online data management platform and
- Joint exchange activities.

3.1.2.1 ePLANET Governance innovation

Target

ePLANET wants to improve the number of implemented energy transition projects by the adoption of a new governance model for public authorities (mainly Municipalities) based on

- a digital environment or system (ePLANET platform),
- allowing and promoting the sharing of data and strategies between PA,
- Fostering collaborative working between groups of PA with similar visions.



Previewing of Outcomes and Benefits of ePLANET use.

Among the forecasted outcomes and benefits for the use of the ePLANET platform, the following should be assured:

- Enhanced interaction and extended multi-level information sharing between PA, which is one of the specific objectives of the project.
- The deployment of grouping public authorities (clustering) as working groups should enhance territorial governance. The clusters will be defined depending on public authorities' requirements. Geographical scope, similar interests, similar progress on energy transition deployment, similar technologies to be deployed, similar ETM, etc. to be considered.
- Facilitation interactions at territorial level, by allowing public authorities to easily create and participate on group chats, ask and answer questions, share information, etc.
- This clustering governance by working groups will increase the group-belonging feel of public sector, their interest in energy transition implementation and their engagement in the deployment of coordinated measures.
- Multi-level governance between local PA promoted at horizontal and vertical level:
 - horizontally, between local authorities, or regional or national authorities and
 - vertically, local-regional, local-supra-local, regional-national, etc.



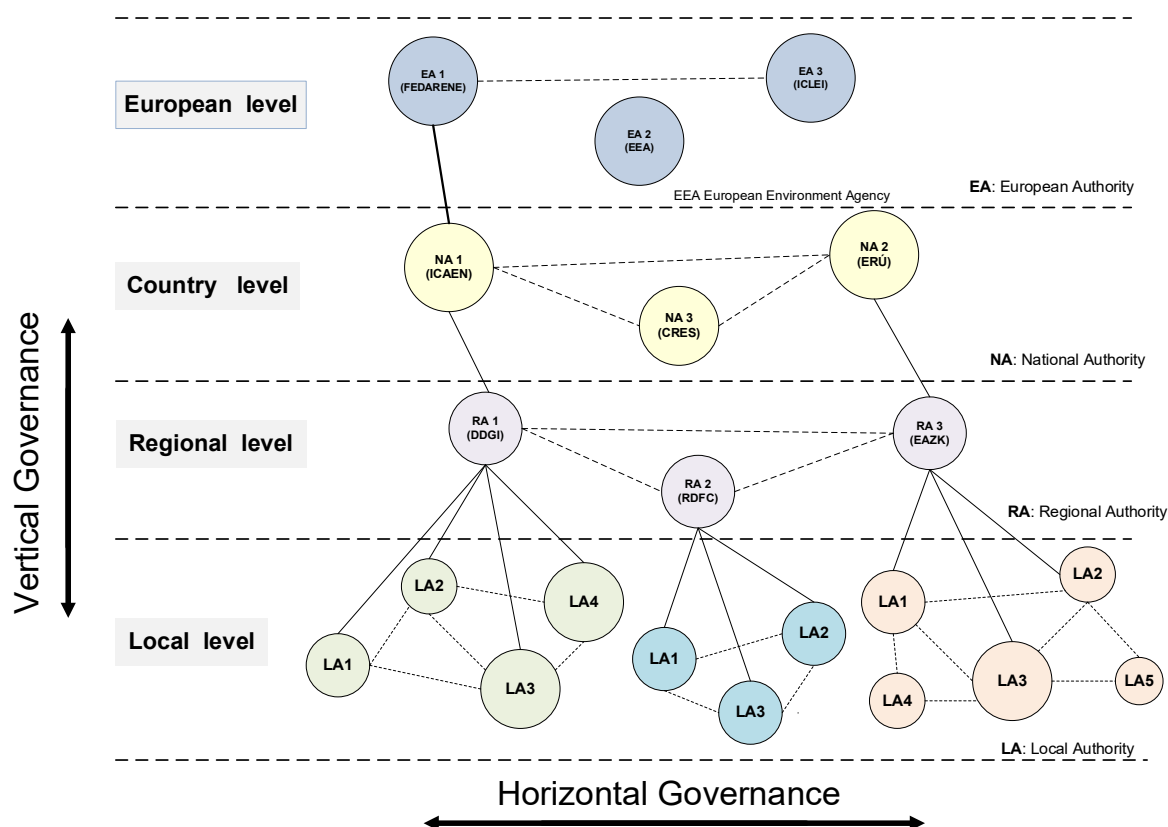


Figure 3-1 Governance structure scheme

Operability of cluster or grouping of interest.

The clustering governance needs the definition and deployment of new figures in the public sector, which will become facilitators and promoters of ePLANET principles. One responsible person has to be identified and defined for each PA governance cluster to lead the actions.

Initially, we are considering, as a new figure, the designation of a PAET, as a Public Advisor on Energy Transition, but this will be tailor-made to the needs and requirements identified from different pilot territories.

The designation of a PAET could be envisaged in some of the pilot territories, to become the representative of data-sharing working group. The type, functions and obligations of this figure will be defined in cooperation with the pilot regions. In order to establish the most appropriate and effective clustering governance in each territory, other potential coordination structures (following user-centered design approach and stakeholder forum) and potential new figures could be considered. All of them would build upon existing local and regional coordination structures and tools.

ePLANET consortium includes CoM Secretariat members (FEDARENE, ICLEI EURO), CoM national coordinators (CRES-GR), CoM territorial coordinators in pilot sites (DDGI, RDFC, EAZK) and ManagEnergy members (ICAEN, EAZK, RDFC, FEDARENE). Their role will be essential in establishing the most-effective governance structures for each of the follower regions.



3.1.2.2 ePLANET platform

Target

The goal of the ePLANET platform is to provide digital support to municipalities in the planning, drafting, and monitoring of their sustainable energy transition plans. Concretely, the platform will give users the possibility to:

- Monitor the progress and effectiveness of existing SECAPs
- Consult and contribute to a database of energy transition measures, associated investment, and avoided energy/emissions
- Access data visualisations at geographical level that can support municipalities and regions in drafting their energy transition plans

Previewing of Outcomes and Benefits of ePLANET use.

In order to provide these services, the platform will be structured in three main modules:

- Energy transition plan monitoring system to support the monitoring of energy transition measures and to simplify the reporting for CoM (SECAP), EU and national reporting obligations.
- Public energy transition measures database to provide an overview and analyses of implemented energy transition measures, and support PA to decide on the most effective energy transition measures for their region.
- GIS-based support tool for energy transition planning to visualize data from different sources on e.g., energy and water consumption, renewable energy potential, emissions within different visualization scales e.g., building block or municipality. Depending on the regional data availability the visualizations will look different for each pilot region.

A more detailed presentation of each of these 3 modules, including data acquisition and harmonization can be found in the annex chapter 3.1.5.2 Detailed description of the ePLANET platform modules.

Mock-up of the ePLANET platform

The ePLANET platform is divided into 3 main sections; the analysis of the energy performance of the public building stock, the SECAPs and the geo-tools.



Analysis of the energy performance of the public building stock

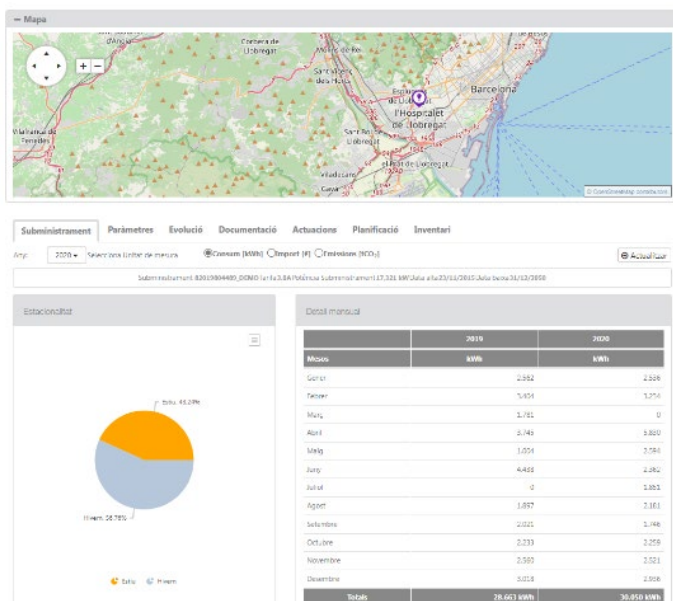


Figure 3-2 Building energy performance, building data visualization.

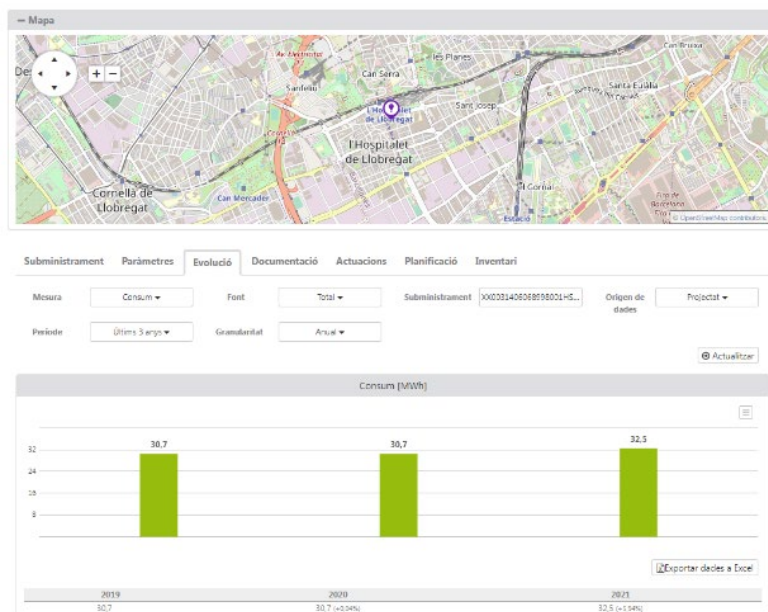


Figure 3-3 Building energy performance, building consumption evolution.

SECAPs

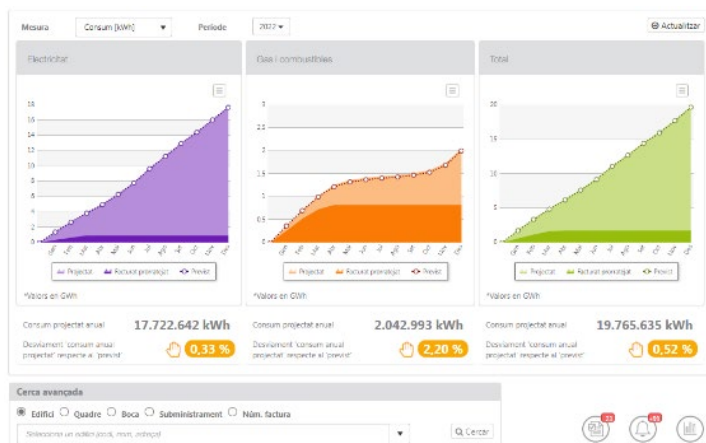


Figure 3-4 SECAPs visualization, estimated consumption vs real consumption.



Figure 3-5 SECAPs visualization, yearly municipal energy consumption per energy source.



Geographical tools

The geographical visualization on the Girona province and the Crete Island consists on incorporate data from the SECAPs and energy consumptions to their existing GIS visualizations.

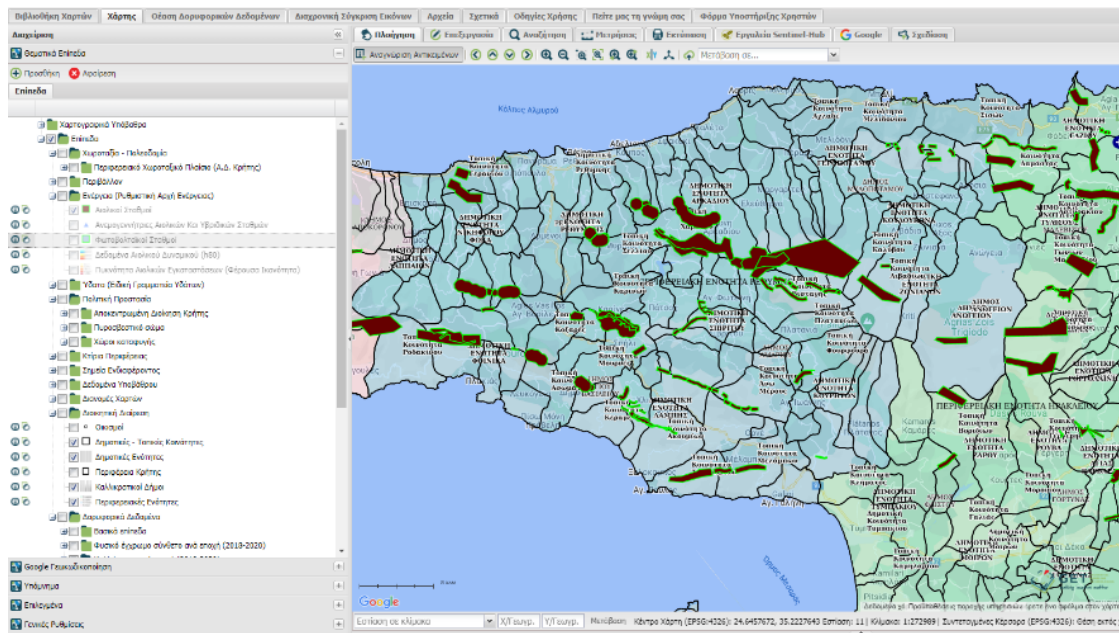


Figure 3-6 GIS application on Crete Island indicating the wind power stations



Figure 3-7 GIS application on the region of Girona, potential PV rooftop

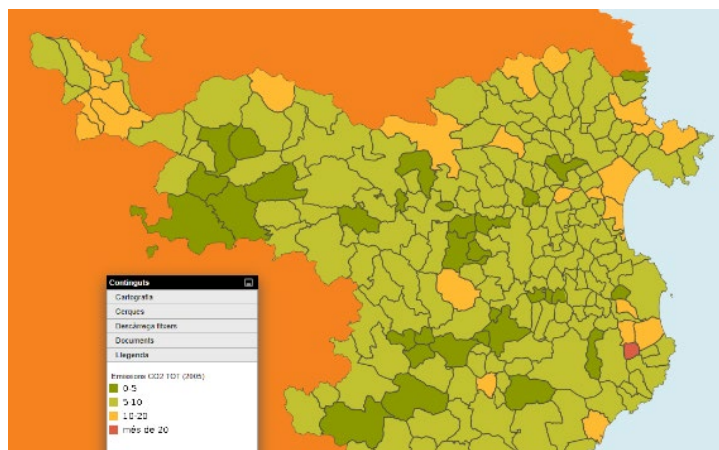


Figure 3-8 GIS application, CO₂ emissions visualization per municipality in Girona

3.1.2.3 ePLANET Joint exchange activities

Target



The ePLANET joint exchange activities for follower regions are designed to support the implementation of ePLANET results in the selected follower regions according to their specific needs and challenges.

Follower regions study-visits in ePLANET pilot region

ePLANET invites the selected follower regions to the pilot regions! This bilateral peer capacity building activity foresees physical visits, where a selected follower region and the associated pilot partner meet. For each follower, one study visit will be organized, 1 per pilot site, tailored to the needs of the follower regions of each pilot site. Up to two people per follower region will visit for up to two days the pilot region.

The study visits of ePLANET are conceived as learning expeditions from follower regions to the regions already using the ePLANET platform and governance. The aim of this activity is to learn more about best practices in place and to exchange experience on how to implement ePLANET tools and approaches best into activities and structure of local and regional authorities.

Each pilot site offers a tailored study visits according to the needs of its follower regions. The visits could include presentation on tools, site visits, workshops, sharing experience, effective means of training, etc. with the aim to support the implementation of ePLANET in the follower regions. Due to the study visits, the ePLANET tools and activities can be easier understood and replicated in the follower regions. Hands on support from different stakeholders within the pilot region is provided to the follower regions.

Technical support visits of ePLANET experts to follower regions

This bilateral peer capacity building activity foresees physical visits, where ePLANET experts travel to the follower region. These technical support visits of ePLANET experts to follower regions are designed to support the implementation of ePLANET results in the follower regions. According to the challenges of each follower region up to two experts from the ePLANET team will be selected to best support the follower regions ambitions on implementing ePLANET results.

One support visit per follower region (up to 6 in total) will be organized. The visits will be tailored to the challenges of each follower region. According to the situation in the follower region, the best suitable ePLANET experts will be identified to provide knowledge and experience. The purpose of the support visit will be defined together with each follower region.

Due to the study visits, the ePLANET tools and activities can be easier understood and replicated in the follower regions. Hands on support from different experts from ePLANET is provided to the follower regions.



Remote support from ePLANET experts for follower region

The purpose of the remote support from ePLANET experts to follower regions is to make the implementation of ePLANET results as easy as possible for the follower regions. Therefore, the designated project experts will be available for different kind of questions (e.g., technical, capacity building, governance) and further provide support in a wide variety of EU languages (e.g., English, German, French, Spanish, Czech, Greek, Italian, Portuguese).

A list of experts and their qualifications will be made available to allow selected follower regions to contact the best suitable ePLANET expert for their specific question. The remote support will be offered via mail or phone or within webinars.

Stakeholder Forum

Follower regions will be allowed to participate in the ePLANET Stakeholder Forums which aim to receive advice and guidance during the implementation phase of the project. Follower regions will have the opportunity to formulate their requirements on the ongoing development of the ePLANET tools and help to make them easier to apply in their own region.

Follower regions will have the opportunity to support a sustainable implementation and the usage of the tools after the end of the project.

3.1.3 What are the participation modalities?

3.1.3.1 Who is eligible to apply?

ePLANET is looking for regional facilitators of the energy transition who are working for or with local and regional authorities. If you are a private company working in close collaboration with the regional or local public authorities (e.g., regional organisation, energy community, ESCO) you will be asked to provide a signed Memorandum of Adhesion of the corresponding PA after your application was successful (see Annex chapter 3.1.5.3). In case you apply as regional or local authority or public (utility) company (e.g., energy agency) you do not need to provide any further prove.

3.1.3.2 What is the duration of the twinning programme?

The twinning programme of ePLANET will take place between September 2022 and August 2024. The established exchange and the cooperation between the regions are supposed to last far beyond the end of the project.

3.1.3.3 What costs will be covered?

ePLANET will cover the travelling expenses of up to two people visiting the pilot region for up to two days. Study visits, tailored webinars and workshops will be offered free of charge. ePLANET cannot cover any type of staff costs or other costs of follower regions.



3.1.3.4 Which language will be spoken?

The ePLANET experts speak eight different European languages, including English, German, French, Spanish, Catalan, Czech, Greek, Italian, and Portuguese. Nevertheless, the projects main language is English and all meetings between all partners as well as all publications are in English. Meetings, webinars and workshops within one pilot region or one pilot regions country will be held in the local language (Greek, Czech, Spanish/Catalan).

3.1.3.5 What do successful applicants commit to contribute to the *project*?

Selected follower regions will be asked to sign a Memorandum of Adhesion (MoA) to commit their support to develop the ePLANET project by

- active participation to meetings, study visits, tailored workshops and webinars as well as other ePLANET events;
- providing constructive feedback to support the development of the ePLANET platform and governance innovations as well as on joint exchange activities;
- promoting the ePLANET platform and governance innovations within their regions especially within the municipalities and
- providing data for visualizations on the ePLANET platform according to the opportunities discussed with the technical partner in charge of the ePLANET tool development (CIMNE);
- Respond to emails and other requests in a timely fashion.

A draft of the MoA can be found in the Annex in chapter 3.1.5.3.

3.1.4 How does the application and evaluation work?

3.1.4.1 Where to apply?

The application must be submitted electronically before the deadline via the EU survey platform: https://ec.europa.eu/eusurvey/runner/ePLANET_twinningregion

3.1.4.2 What information should be included in the application?

The application form must be completed and all mandatory questions answered. During the step no further documents need to be submitted. Successful applicants will be asked to sign a MoA. In case of a private company further the corresponding PA will need to provide a MoA.

3.1.4.3 Timeline for the applications and evaluation process

The selection of follower regions will be done according to the timeline below. Future dates could be slightly adjusted in case of necessity. Any changes will be announced.

30.03.2022 - 29.05.2022: Open Call - Expression of interest



30.05.2022 - 20.06.2022: Open Call - Submission of applications

July 2022: Evaluation of Applications

31.07.2022: Results of the evaluation shared with all applicants

August 2022: MoA signed by successful follower regions

September 2022: Onboarding of follower regions and start of cooperation

The onboarding process will include analysis of regional and local authority needs and motivation for implementing collaborative data exchange or collection. A report on the selected Follower Regions' Needs will be prepared by FEDARENE in collaboration with the pilot Partners and used for modelling the subsequent activities.

3.1.4.4 *Evaluation process*

The evaluation will be based on the ePLANET Open Call Application Forms submitted by the applicants through the EU survey website available under the following link: https://ec.europa.eu/eusurvey/runner/ePLANET_twinningregion.

At least two remote independent evaluators with expertise in the field of public local authorities networking for driving the energy transition will assess each application for the ePLANET Open Call.

The Open Call Evaluation process involves the following three stages:

Stage 1: Eligibility Evaluation

Initial filtering to determine whether the applicant is eligible (inclusion criteria) or not eligible (exclusion criteria) to participate in the ePLANET Open Call and to become the ePLANET twinning / follower region. The basis for the applicant eligibility evaluation is a set of eligibility evaluation criteria (see Table 3-3). These criteria describe characteristics that all applicants of the ePLANET Open Call must share.

Stage 2: Qualification Evaluation

The basis for the applicant qualification is a set of evaluation criteria (see Table 3-4). These criteria describe the individual level of the qualification (i.e., motivation, experience and capacity) characteristics of the applicants of the ePLANET Open Call.

Stage 3: Desirable Qualification Evaluation

The basis for the applicant desirable qualification is a set of desirable qualification criteria (see Table 3-5). These criteria describe the individual qualification characteristics of the applicants of the ePLANET Open Call, which are desired for the potential ePLANET twinning / follower region but not necessary to qualify.



Evaluation Criteria Lists

Table 3-3 ePLANET Open Call - Eligibility Criteria List

Nº	Eligibility Criteria	Eligibility Check:
A.1	The applicant is established in a Member State of the European Union or an associated European Union country	Yes / No
A.2	The applicant is (1) a local or regional public authority or (2) a public (utility) company or (3) public or private organisation working in close collaboration with the local or regional public authorities or public utilities (e.g., energy agency)	Yes / No
A.3	The applicant has submitted Application Form respecting the deadline for applications, 20.06.2022, 18:00 CET (Brussels time, GMT+1)	Yes / No
A.4	The Application Form has been submitted electronically through the form on the EU survey website https://ec.europa.eu/eusurvey/runner/ePLANET_twinningreg ion	Yes / No
A.5	All required field in the Application Form are completed	Yes / No
A.6	The applicant does not have any potential conflict of interest with the ePLANET Open Call selection process	Yes / No

Table 3-4 ePLANET Open Call - Qualification Criteria List

Nº	Qualification Criteria	Score
B.1	Applicant's interest in the ePLANET project related topics: <ul style="list-style-type: none"> - Energy and Climate Action Plans - Innovative multi-level governance - Digitalisation and GIS visualisation - Sharing of Energy Transition measures data 	0 (low) to 5 (high)
B.2	Applicant's willingness to share knowledge and experience with other public authorities	0 (low) to 5 (high)
B.3	Applicant's human, technical and time capacity to take an active part in the ePLANET activities.	0 (low) to 5 (high)



Table 3-5 ePLANET Open Call - Desirable Qualification Criteria List

Nº	Desirable Qualification Criteria	Score
C.1	Applicant's experience in project language English and national language of the pilot regions (Czech, Greek, Spanish).	0 (low) to 4 (high)

3.1.5 Annex

3.1.5.1 Description of the ePLANET partners

Diputació de Girona

Diputació de Girona is a public institution from Catalonia supporting 221 municipalities from Girona region. The Environmental Service from Diputació de Girona offers services such as environment support, preservation of the natural heritage and Covenant of Mayors.

EAZK - Energy agency of the Zlín Region

The Energy agency of the Zlín Region (EAZK) is a non-profit organisation. It is a regional energy agency established in 2006 and 100% owned by the Zlín Region. Since 2014 EAZK is Covenant of Mayor Supporter and takes actions on territories of the Zlín Region in the field of energy.

EAZK takes part in the project ePLANET as a representative of the pilot region, i.e. the Zlín Region and coordinates and leads the pilot implementation. Moreover, it contributes to overall goals of the project with particular focus on the transferring activities (scaling up to the whole region, replication to their regions) but also on capacity building (user's empowerment, for instance) and the definition and deployment of clustering groups and governance methodology, and the institutionalization of ePLANET outcomes.

RDFC - Regional Development Fund of Crete

The Regional Development Fund of Crete (RDFC) is a public entity under private law with an innovating role in the implementation of regional development in the region of Crete, aiming to the management of public sector's funding, to the planning and support of the regional and local authorities and to the participation into EU projects. Under the RDFC operates the Regional Energy Agency of Crete (REAC), which implements multi-level sustainable energy-climate policy and governance, and multi-sector energy transition through the regional coordination of the "Covenant of Mayors"/"Covenant of Islands" and intensive partnerships at local/regional/national/European and international levels.



CIMNE - International Centre for Numerical Methods in Engineering

The International Centre for Numerical Methods in Engineering (CIMNE) is a leading research and technological development institution with a proven ability to deliver big data management services in energy, building and environment fields.

In ePLANET, CIMNE is the project coordinator, technology provider and responsible for the ePLANET platform development. The EU project ePLANET is a logical progress of CIMNE BEE Group's dedicated department, providing innovative solutions for local public authorities to drive them in the Energy Transition.

ICAEN - Catalan Institute for Energy

The Catalan Institute for Energy (ICAEN) is the entity of the Government of Catalonia responsible for developing and carrying out the Catalan energy policy, especially in the field of energy efficiency and renewable energies. The mission of the energy policy of the Government of Catalonia is to achieve an economy and a society of low energy intensity and low carbon emission, innovative, competitive and sustainable in line with the European objectives. ICAEN develops programs to promote energy efficiency in all economic sectors: industry, transport, primary, and buildings.

CRES - The Centre for Renewable Energy Sources and Energy Saving

CRES -the Centre for Renewable Energy Sources and Energy Saving- is appointed by law as the National Centre coordinating RE and EE activities in Greece. Its role includes providing technical support to public bodies for improving energy-efficiency in buildings or other areas of their activities.

CRES has implemented over 1000 national, EU and international projects (Horizon 2020, IEE, Interreg MED, etc.), in the fields of energy-efficiency and renewable energy applications in buildings and communities, energy policies, capacity building and awareness-raising for energy-efficiency.

CRES is also the national contact point for the Covenant of Mayors initiative. In close collaboration with Municipalities and Regional authorities, it provides technical support in developing Sustainable Energy Action Plans, energy efficiency interventions and promotional campaigns



FEDARENE - The European Federation of Agencies and Regions for Energy and the Environment

FEDARENE, the European Federation of Agencies and Regions for Energy and the Environment, is the leading voice on the energy transition and climate change for regions and energy agencies in Europe. The federation counts more than 80 members in 22 EU countries.

With more than 25 years' experience in the management of EU-funded projects, FEDARENE and its members are specialized in delivering capacity building and facilitation services for the implementation of the sustainable energy transition. FEDARENE is part of the secretariat running three key European initiatives: Managenergy, European City Facility and the Covenant of Mayors.

ICLEI - Local Governments for Sustainability

ICLEI - Local Governments for Sustainability - is a global network working with more than 2,500 local and regional governments committed to sustainable urban development. Active in 125+ countries, ICLEI influences sustainability policy and drives local action for low emission, nature-based, equitable, resilient and circular development. Its members and team of experts work together through peer exchange, partnerships and capacity building to create systemic change for urban sustainability.

LIMA - Low Impact Mediterranean Architecture

LIMA is a non-profit association composed of professionals from the building and environmental sectors, working to improve urban and built environments and foster the energy transition. As a consultancy, LIMA offers a wide set of activities, from technical and strategic assessments (e.g.m energy communities and sustainable urban planning) to scientific communication. As a construction company, LIMA is specialized in the promotion of zero emission wooden buildings following the principles of bioclimatic architecture.

3OC - Three o'clock

Three o'clock (3OC) is a service design agency based in Paris (France) which helps companies, public authorities and citizens design products and services that are user-centred and provide new urban experiences. In 3OC, people believe cities are spaces for experimentation and exploration, that is why they test new ideas and co-create new solutions.

3OC is a social enterprise which co-invests in different projects and does pro bono work for social entrepreneurs and communities who need the extra help. The approach of 3OC is based on integrating human experience into urban projects, testing & prototyping solutions in actual living environments and empowering organisations through an experimental learning process.

Sectors: Energy, construction & mobility.



3.1.5.2 *Detailed description of the ePLANET platform modules*

Module 1: Energy transition plan monitoring system

This module is going to be dedicated to the monitoring of the progress of active energy transition plans. Initially, the access to this platform area will be restricted to individual public administrations, who will be able to upload all the relevant data about their active SECAPs. At a later stage, public administrations will also have the option to open this information to the public, so that citizens and other interested stakeholders can consult it and receive updates about the achieved and ongoing energy transition efforts.

Municipalities will be able to upload their Baseline Emissions Inventory (BEI) and Monitoring Emissions Inventory (MEI) data on the platform, as well as a breakdown of their energy transition campaigns. Concrete actions taken until now or planned according to their SECAPs will also be included. A tool to automatically upload this information to the ePLANET database by extracting it from the official CoM (Covenant of Mayors) SECAP template will be provided.

The SECAP progress will be monitored on two different levels:

- On a qualitative level, public administrations will be given the possibility to specify and periodically update the level of completion of each of their planned energy transition measures (not started, started, ongoing, advanced state, completed).
- On a quantitative level, the SECAP progress will be monitored through the analysis of different KPIs (Key Performance Indicator) that can be built by considering available data, such as the energy transition measures taken, the associated budget, and the consumption/emissions reduction in the sectors which are linked to the analysed measures.

The theoretical emissions reduction values included in the SECAPs can then be periodically compared with the actual reduction achieved according to the MEI data, and data-backed decisions can be made to adjust the plans and ensure that targets and pledges are met. In the case of transition measures for which data with higher granularity might be available (e.g., improvement of energy efficiency in public buildings, renovation of the public transport fleet, etc.), it will also be possible to specify the measured savings calculated using other measurement and verification techniques.

To avoid unnecessary replication of work, once an energy transition plan is created in the ePLANET platform, and its fundamental information is stored in the ePLANET database, it will be possible to automatically generate Excel files compatible with the CoM SECAP template, or with other EU or national reporting guidelines.

Module 2: Public energy transition measures database

This module of the ePLANET platform will lay the foundation for the creation of an EU-wide database of measures and corresponding emissions reduction. This database is targeting public



administrations and other relevant stakeholders looking for data that can back the effectiveness of different energy transition measures and strategies.

This database will be fed by the SECAP data of all the municipalities and regions that register to the platform. Users will be able to filter the measures by sector, geography, impact, total investment, demographics of the municipalities where they were implemented, as well as compound metrics such as the ratio between avoided emissions and total investment.

Upon reaching full-scale, municipalities and regions at European level will be able to use this database of measures to take decisions backed by data when developing their own energy transition plans.

Module 3: GIS-based support tool for energy transition planning

This module will provide GIS-mapped visualizations of a wide range of data which can be of interest in the definition of an energy transition strategy at municipal level. The ePLANET platform will connect to the relevant data sources, performing harmonization functions, and allowing the visualization of several layers of data. Users will also be able to switch between different visualization scales (building block, municipal, postal code levels) and perform benchmarking comparisons between areas of interest. There will be two main data aggregation layers, in which different kind of information will be shown:

Municipal/postal code level

- Aggregated energy consumption by sector
- Aggregated emissions by sector
- Renewable energy production

Building block level

- Electricity, gas, and water consumption
- Rooftop PV production potential
- Existing rooftop PV systems
- Cadastre information (year of construction, primary use, total floor area, etc.)

These visualisations will be employed by the users of the ePLANET platform to support their decision-making process with valuable data. One example of the use of a GIS-based support system could be to match energy consumption data at building block level with PV rooftop potential studies to optimally plan and design collective self-consumption projects for energy communities.



3.1.5.3 Memorandum of Adhesion

Below is the draft version of the Memorandum of Adhesion which has to be signed by successful selected applicants prior the start of the cooperation with the project.



[Insert organisation logo]

Memorandum of Adhesion

Organisation:

Place: / (City/Country)

We, the **[Name of Signatory Organisation]**, hereby declare our interest in becoming a “follower” organisation of the European project:

ePLANET (European Public Local Authorities' Network for driving the Energy Transition) *

The ePLANET project is implemented in the framework of the Horizon 2020 Programme, and focuses on accelerating energy transition in the public sector, by improving coordination between local and regional authorities for the implementation of energy transition measures. The project targets the deployment of a new clustering governance for energy transition based on a digital framework to share harmonized information.



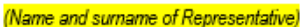
More specifically, we declare our intention to support the implementation of ePLANET activities and the uptake of the project results, within our reach of competence, in case of a successful application. In particular, we aim to:


- Actively participate to ePLANET networking, capacity building and dissemination events (e.g. meetings, study visits, joint exchange activities, webinars, etc.), so as to exchange experiences and knowledge on energy transition issues with other public bodies at regional, national and European Union (EU) level, identify common challenges and explore potential synergies;
- Provide constructive feedback to support the development of the ePLANET platform and governance innovations, so as to maximise adoption and sustainability of the project outcomes beyond its duration;
- Exploit the ePLANET tools (e.g. ePLANET digital platform, repository of best practices and solutions for energy transition, etc.) and outcomes and promote their implementation within the region, municipalities and other interested stakeholders in our territory / network;
- Support / promote the ePLANET Joint Agreement, which will constitute a major agreement between public authorities and interested stakeholders reflecting a joint vision on actions and initiatives to accelerate energy transition;
- Consider the Policy recommendations at EU level that will be developed by ePLANET, towards future development and/or update of our local / regional energy policies;
- Strengthen our cooperation, through engaging in ePLANET activities, with the region, municipalities and other public bodies in our territory, supporting the development of coordinated strategies and action plans towards energy transition, potentially with the addition of new figures and roles within our organisation;
- Seek synergies between ePLANET and other relevant projects and initiatives implemented in our territory, aiming at multiplying the benefits.

We understand that, by signing this document, no financial or other liabilities from the ePLANET project or its partners shall occur.

Any personal data we may provide during our cooperation with the ePLANET consortium shall be treated confidentially for the exclusive use of the ePLANET project in accordance with the provisions of the EU General Data Protection Regulation (2016/779/EU – GDPR).

Place – Date: -



* The ePLANET H2020 project has received funding from the European Union's Horizon 2020 research and innovation programme under grant agreement N° 101032450.

Template for MoA to support an application within the ePLANET project. Please print on the organisation's headed paper, scan to PDF and upload to the online application form.



Figure 3-9 Draft Memorandum of Adhesion

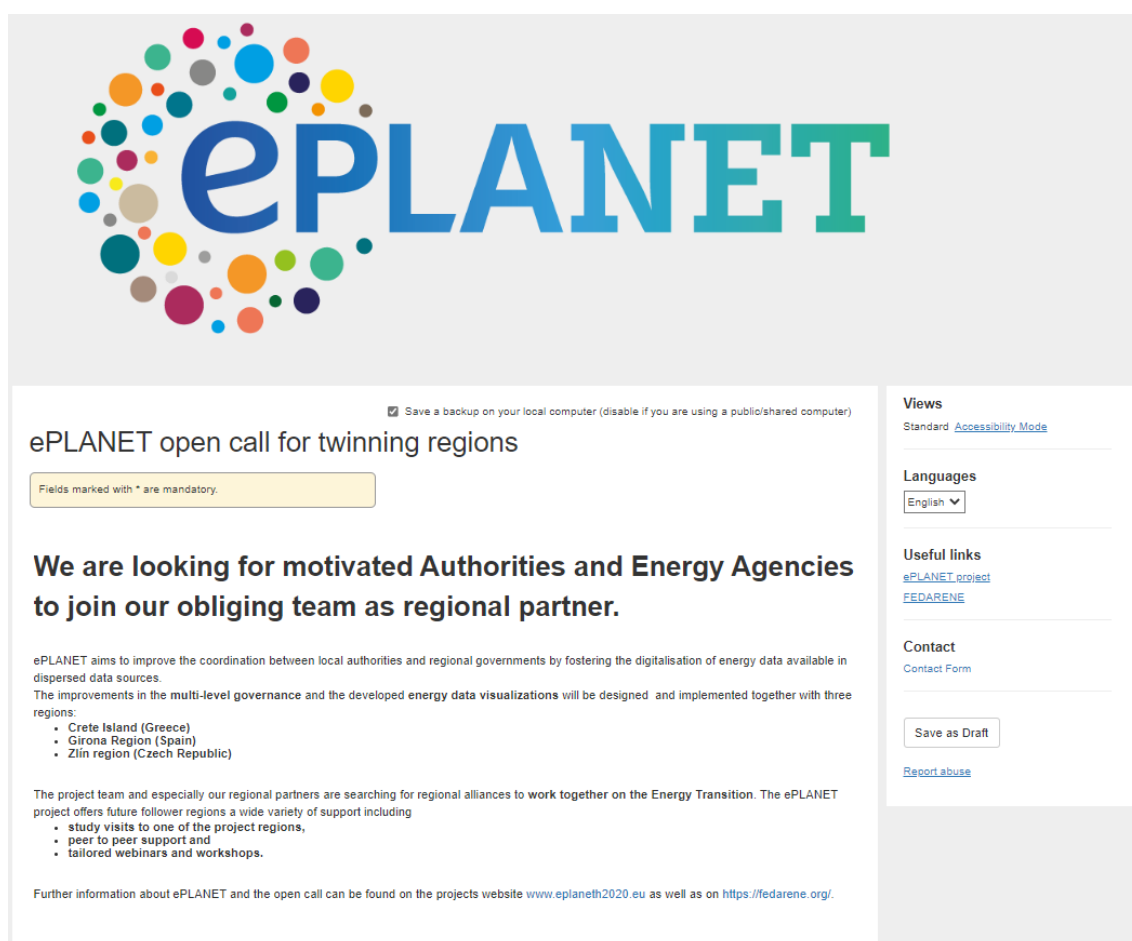


3.2 EU Open Call on EUsurvey

The Open Call for interested regions was published on EU survey on the 30th of March and will stay opened until the second phase of the Open Call starts, which is foreseen for the 30th of May.

3.2.1 Application form Open Call for interested regions

The Open Call from the EU survey platform is shown in Figure 3-10 and Figure 3-11 and is online available at the moment the deliverable is submitted under the link: https://ec.europa.eu/eusurvey/runner/ePLANET_twinningregion.



☒ Save a backup on your local computer (disable if you are using a public/shared computer)

ePLANET open call for twinning regions

Fields marked with * are mandatory.

We are looking for motivated Authorities and Energy Agencies to join our obliging team as regional partner.

ePLANET aims to improve the coordination between local authorities and regional governments by fostering the digitalisation of energy data available in dispersed data sources. The improvements in the multi-level governance and the developed energy data visualizations will be designed and implemented together with three regions:

- Crete Island (Greece)
- Girona Region (Spain)
- Zlín region (Czech Republic)

The project team and especially our regional partners are searching for regional alliances to work together on the Energy Transition. The ePLANET project offers future follower regions a wide variety of support including:

- study visits to one of the project regions,
- peer to peer support and
- tailored webinars and workshops.

Further information about ePLANET and the open call can be found on the projects website www.eplaneth2020.eu as well as on <https://fedarene.org/>.

Views
Standard [Accessibility Mode](#)

Languages
English ▼

Useful links
[ePLANET project](#)
[FEDARENE](#)

Contact
[Contact Form](#)

[Report abuse](#)

Figure 3-10 ePLANET open call for interested regions 1/2



Expression of interest

* Name

* email

* Name of your organization

EU member states

* Region

How do you want to stay in contact with ePLANET (1)

☐ I want to receive the ePLANET newsletter

☐ I want to be invited to ePLANET events

(1) You can change your mind at any time by clicking the unsubscribe link in the footer of any email you receive from us, or by contacting us at info@eplaneth2020.eu. We will treat your information with respect. For more information about our privacy practices please visit our website (www.eplaneth2020.eu). By clicking below, you agree that we may process your information in accordance with these terms.

GDPR Permission


* ☐ I accept your terms of conditions. I agree that ePLANET project partners will use the information provided on this form to contact and inform me about the opportunities to become a follower region. In case I selected the option I further agree to be contacted via newsletter and/or receive invitations to events. I know that I can withdraw my expression of interest anytime by contacting the ePLANET team at info@eplaneth2020.eu. The privacy policy of ePLANET can be read on the project website www.eplaneth2020.eu/privacy-policy/.

Figure 3-11 ePLANET open call for interested regions 2/2

3.2.2 Application form

The Open Call application form from the EU survey platform is shown in Figure 3-12, Figure 3-13, Figure 3-14 and Figure 3-15 and is online available at the moment the deliverable is submitted under the link: https://ec.europa.eu/eusurvey/runner/ePLANET_twinningregion. The application form is available in different languages to reflect the spoken languages within the project and the pilot sites including English, Spanish, Czech, Greek and Catalan.





☒ Save a backup on your local computer (disable if you are using a public/shared computer)

ePLANET open call for twinning regions

Fields marked with * are mandatory.

We are looking for motivated Authorities and Energy Agencies to join our obliging team as regional partner.

ePLANET aims to improve the coordination between local authorities and regional governments by fostering the digitalisation of energy data available in dispersed data sources.
The improvements in the multi-level governance and the developed energy data visualizations will be designed and implemented together with three regions:

- Crete Island (Greece)
- Girona Region (Spain)
- Zlín region (Czech Republic)

The project team and especially our regional partners are searching for regional alliances to work together on the Energy Transition. The ePLANET project offers future follower regions a wide variety of support including

- study visits to one of the project regions, where you will meet with all the people working on ePLANET and the regional implementation for 2 days to exchange, learn and discuss,
- peer to peer support to facilitate the energy transition in your region by offering technical and organizational guidance and answer all your questions and
- tailored webinars and workshops to help to build up capacities to speed up the energy transition in your region among others on innovative governance and the most efficient energy transition measures.

Further information about ePLANET and the open call can be found on the projects website www.eplaneth2020.eu as well as on <https://fedarene.org/>.

ePLANET Application Guideline
[ePLANET EU Open Call Application Guideline.pdf](#)

Views
Standard [Accessibility Mode](#)

Languages
English ▼

Useful links
[ePLANET project](#)
[FEDARENE](#)

Contact
[Contact Form](#)

[Save as Draft](#)

[Report abuse](#)

Figure 3-12 ePLANET Open Call Application form general description



Application as follower region

* Applicants name

* email

* Country of origin

* Region

* Name of your organization

* Type of organisation

- ☐ Regional Authority
- ☐ Local Authority (Cluster of Local Authorities)
- ☐ Public Organisation (Energy Agency, Power company)
- ☐ Private Organisation
- ☐ Private Company

Figure 3-13: ePLANET Open Call Application form description of the applicant



How interested are you in the different ePLANET topics?

Energy and Climate Action Planning

Move the slider or accept the initial position.



Innovative multi-level governance

Move the slider or accept the initial position.



Digitalisation and GIS visualisation

Move the slider or accept the initial position.



Sharing of Energy Transition measures data

Move the slider or accept the initial position.



* Are you willing to share knowledge and experience with the project team and other public authorities and agencies?

- ☐ Yes
☐ No

Figure 3-14 ePLANET Open Call Application form motivation of the applicant



* How familiar are you working in the following languages?

- ☐ English
☐ Catalan
☐ Czech
☐ Greek
☐ Spanish

* Do you have time and technical capacity to take an active part in the ePLANET activities?

- ☐ Yes
☐ No

* Which pilot site are you interested to visit?

- ☐ Crete Island
☐ Girona Region
☐ Zlín Region

How do you want to stay in contact with ePLANET (1)

- ☐ I want to receive the ePLANET newsletter
☐ I want to be invited to ePLANET events

(1) You can change your mind at any time by clicking the unsubscribe link in the footer of any email you receive from us, or by contacting us at info@eplaneth2020.eu. We will treat your information with respect. For more information about our privacy practices please visit our website (www.eplaneth2020.eu). By clicking below, you agree that we may process your information in accordance with these terms.

GDPR Permission

* ☐ I accept your terms and conditions. I agree that ePLANET project partners will use the information provided in this form to contact and inform me about the opportunities to become a follower region. In case I selected the option I further agree to be contacted via newsletter and/or receive invitations to events. I know that I can withdraw my expression of interest anytime by contacting the ePLANET team at info@eplaneth2020.eu. The privacy policy of ePLANET can be read on the project website www.eplaneth2020.eu/privacy-policy/.

Submit

Figure 3-15 ePLANET Open Call Application form skills of the applicant



3.3 Communication with the applicants

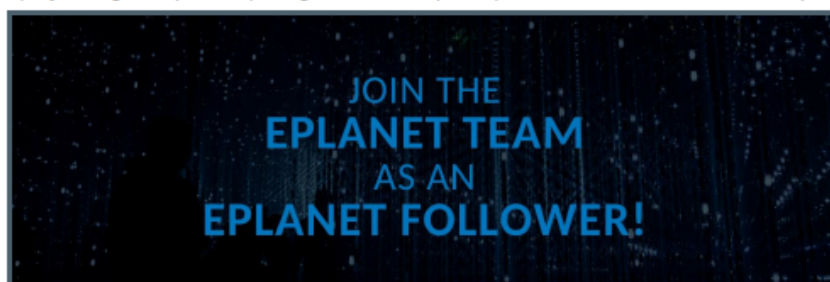
3.3.1 Letter of Acceptation



CONGRATULATIONS!

You have been selected as an ePLANET follower.

You will be able to benefit from tailored support including study visits to one of the project regions, peer to peer guidance and participation in webinars and workshops.



In this framework, you will have the opportunity to:

- Exchange experiences and knowledge on energy transition issues with other public bodies at regional, national and EU level, identify common challenges and explore potential synergies;
- Provide constructive feedback to support the development of the ePLANET platform and governance innovations;
- Support / promote the implementation of the ePLANET tools and outcomes within the Region, Municipalities and other interested stakeholders in your territory / network;
- Exploit the ePLANET tools and outcomes towards developing your Energy Transition plan, making it more aligned with local / regional energy transition targets in your territory;
- Support / promote the ePLANET Joint Agreement, which will constitute a major agreement between public authorities and interested stakeholders reflecting a joint vision on actions and initiatives to accelerate energy transition;
- Consider the Policy recommendations at EU level that will be developed by ePLANET, towards future development of local / regional energy policies.

Please officially confirm your interest and capacity to join the following activities by signing the attached Memorandum of Adhesion.


	<p>This project has received funding from the European Union's Horizon 2020 research and innovation programme under grant agreement N° 101032450. The views expressed in this publication are the sole responsibility of the author/s and do not necessarily reflect the views of the European Commission.</p>
---	--

Figure 3-16 letter of acceptance

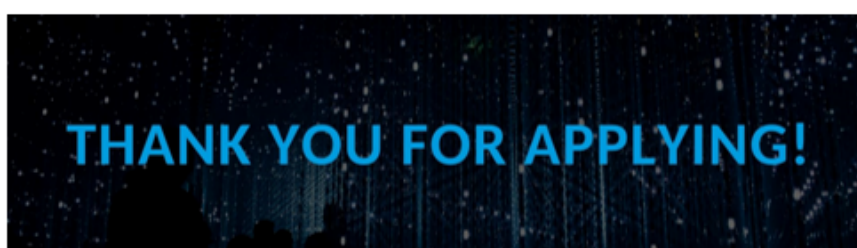


3.3.2 Letter of additional activities offered



CONGRATULATIONS!

You can benefit from the ePLANET activities.



You have been selected to benefit from the following activities offered by ePLANET team, to stay engaged:

- User empowerment webinars to build up capacities on general aspects of the energy transition and to increase the knowledge on how to better deploy energy transition measures and actions
- (National webinars and workshops in your language to receive knowledge tailored to regional specifics on the use of the platform and energy transition measures)

Unfortunately, we cannot offer you an invitation to a study visit and provide peer to peer guidance for you as there have been too many promising applications in the framework of the Open Call.

We invite you to stay engaged with the ePLANET team and benefit from the project findings and outcomes, by **signing the attached Memorandum of Adhesion**.

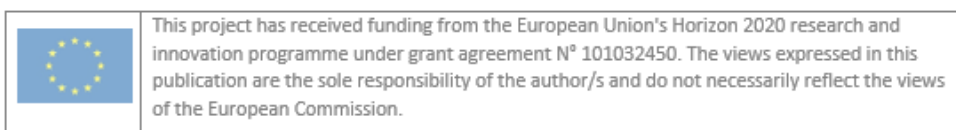


Figure 3-17 Letter of additional activities (ENG)



3.3.3 Letter of additional activities offered in Catalan language



FELICITATS!

Pots beneficiar-te de les activitats del projecte ePLANET



Heu estat seleccionats per beneficiar-vos de les activitats següents que ofereix l'equip d'ePLANET:

- Consistent en seminaris web per desenvolupar capacitats sobre aspectes generals de la transició energètica i oferir-vos eines perquè implementeu de la millor forma les mesures i les accions de relacionades amb la transició energètica.
- Jornades i tallers nacionals en la teva llengua per rebre coneixements tècnics adaptats a les condicions de cada regió sobre l'ús de la plataforma i les mesures de transició energètica.

Malauradament, no podem oferir-vos la invitació per a una visita d'estudi en una de les regions pilots i oferir-vos la orientació guiada, ja que hi ha hagut un gran volum d'aplicacions en el marc de la convocatòria.

Us convidem a mantenir-vos compromesos amb l'equip del projecte ePLANET i beneficiar-vos dels resultats del projecte, signant el Memoràndum d'Adhesió adjunt.

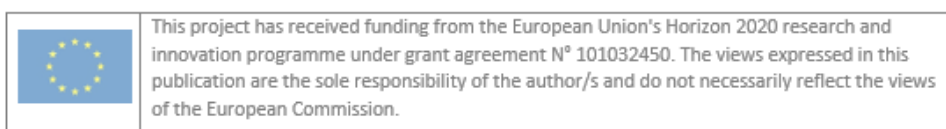


Figure 3-18 Letter of additional activities (CAT)



3.3.4 Memorandum of Adhesion in English



[Insert organisation logo]

Memorandum of Adhesion

Organisation:

Place: / (City/Country)

We, the **(Name of Signatory Organisation)**, hereby declare our interest in becoming an **engaged stakeholder** of the European project:

ePLANET (European Public Local Authorities' Network for driving the Energy Transition) *

The **ePLANET** project is implemented in the framework of the Horizon 2020 Programme and focuses on accelerating energy transition in the public sector, by improving coordination between local and regional authorities for the implementation of energy transition measures. The project targets the deployment of a new clustering governance for energy transition based on a digital framework to share information.




More specifically, we declare our intention to support the implementation of **ePLANET** activities and the uptake of the project results, within our reach of competence, in case of a successful application. In particular, we aim to:


- Participate in **ePLANET** networking, capacity building and dissemination **events** so as to exchange experiences and knowledge on energy transition issues with other public bodies at regional, national and European Union (EU) level, identify common challenges and explore potential synergies;
- Provide **feedback** to support the development of the **ePLANET** platform and governance innovations, so as to maximise adoption and sustainability of the project outcomes beyond its duration;
- Exploit the **ePLANET tools** (e.g. **ePLANET** digital platform, a repository of best practices and solutions for energy transition, etc.) and outcomes and promote their implementation within the region, municipalities and other interested stakeholders in our territory / network;
- Support / promote the **ePLANET Joint Agreement**, which will constitute a major agreement between public authorities and interested stakeholders reflecting a joint vision on actions and initiatives to accelerate energy transition;
- Consider the Policy recommendations at the EU level that will be developed by **ePLANET**, towards future development and/or update of our local / regional **energy policies**;
- Strengthen our cooperation, through engaging in **ePLANET** activities, with the region, municipalities and other public bodies in our territory, supporting the **development of coordinated strategies** and action plans towards energy transition, potentially with the addition of **new figures and roles** within our organisation;
- Seek **synergies** between **ePLANET** and other relevant projects and initiatives implemented in our territory, aiming at multiplying the benefits.

We understand that, by signing this document, no financial or other liabilities from the **ePLANET** project or its partners shall occur.

Any personal data we may provide during our cooperation with the **ePLANET** consortium shall be treated confidentially for the exclusive use of the **ePLANET** project in accordance with the provisions of the EU General Data Protection Regulation (2016/779/EU – GDPR).

Place – Date: -



* The **ePLANET** H2020 project has received funding from the European Union's Horizon 2020 research and innovation programme under grant agreement N° 101032450.

Template for MoA to support an application within the **ePLANET** project. Please print on the organisation's headed paper, scan to PDF and send back via mail.



Figure 3-19 Memorandum of Adhesion (ENG)



3.3.5 Memorandum of Adhesion in Catalan



[Inserir el logo de la vostra organització]

Memoràndum d'Adhesió

Organització:

Lloc: / (Municipi / País)

Nosaltres, (Nom de l'organització signatària), declarem el nostre interès en formar part del projecte europeu:

ePLANET (European Public Local Authorities' Network for driving the Energy Transition / Xarxa d'Autoritats Locals Públiques Europees per impulsar la Transició Energètica) *

El projecte ePLANET s'implementa dins del marc del Programa Horitzó 2020 i es centra en accelerar la transició energètica en el sector públic, mitjançant la millora de la coordinació entre les autoritats locals i regionals per a la implementació de mesures de transició energètica. El projecte té com a objectiu el desplegament d'una nova governança de grup per a la transició energètica basada en un marc digital per compartir informació.

Més concretament, declarem la nostra intenció de donar suport a la implementació d'activitats del projecte ePLANET i la captació dels resultats del projecte, dins del nostre abast de competència. En particular, pretenem:

- Participar en esdeveniments de creació de xarxes i de difusió del projecte ePLANET (per exemple, reunions, seminaris web, fòrum de parts interessades, etc.), per intercanviar experiències i coneixements sobre qüestions de transició energètica amb altres organismes públics a nivell regional, nacional i de la Unió Europea (UE), identificar reptes comuns i explorar possibles sinergies;
- Proporcionar comentaris i/o suggeriments per donar suport al desenvolupament de la plataforma ePLANET i les innovacions de governança, per tal de maximitzar l'adopció i la sostenibilitat dels resultats del projecte més enllà de la seva durada;
- Explotar les eines ePLANET (per exemple, la plataforma digital ePLANET, un dipòsit de bones pràctiques i solucions per a la transició energètica, etc.) i els resultats i promoure la seva implementació a les regions, municipis i altres agents interessats al nostre territori / xarxa;
- Donar suport / impulsar l'acord conjunt ePLANET, que constituirà un acord important entre les autoritats públiques i les parts interessades que reflecteixi una visió conjunta sobre accions i iniciatives per accelerar la transició energètica;
- Considerar les recomanacions polítiques a nivell de la UE que desenvoluparà ePLANET per al desenvolupament futur i/o l'actualització de les nostres polítiques energètiques locals/regionals;
- Reforçar la nostra cooperació, mitjançant la participació en les activitats del projecte ePLANET, amb les regions, els municipis i altres organismes públics del nostre territori, donant suport al desenvolupament d'estratègies coordinades i plans d'acció cap a la transició energètica, potencialment amb la incorporació de noves figures i rols dins la nostra organització;
- Buscar sinergies entre ePLANET i altres projectes i iniciatives rellevants implantades al nostre territori, amb l'objectiu de multiplicar els beneficis.


	<p>(Segell organització)</p>	<p>(Signatura del representant)</p>
		<p>(Nom i cognoms del representant)</p>
<p>* El projecte ePLANET H2020 ha rebut finançament del programa de recerca i innovació Horizon 2020 de la Unió Europea en virtut de l'acord de subvenció N° 101032450</p>		



Figure 3-20 Memorandum of Adhesion (CAT)

