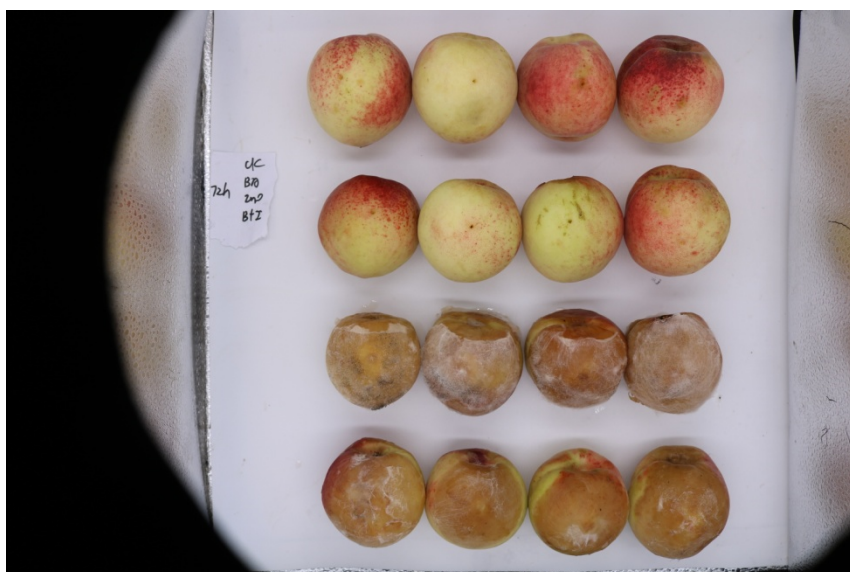
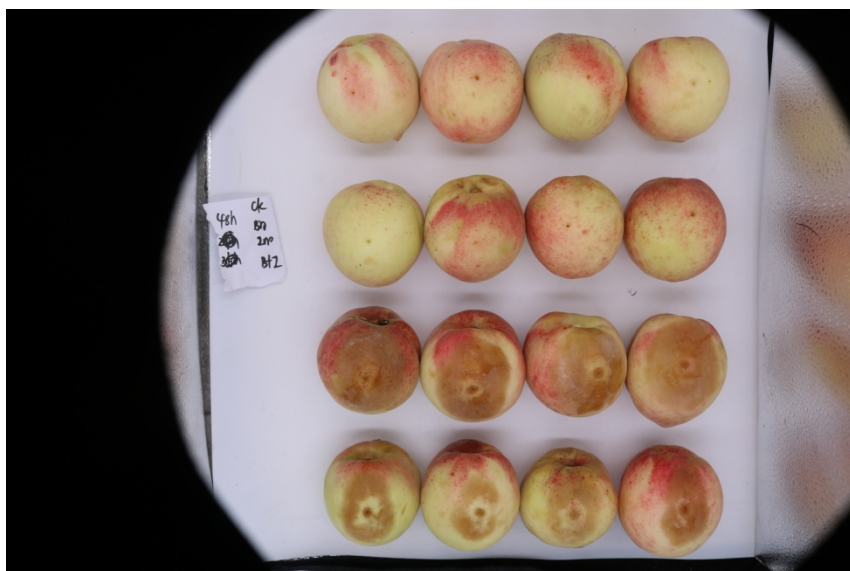
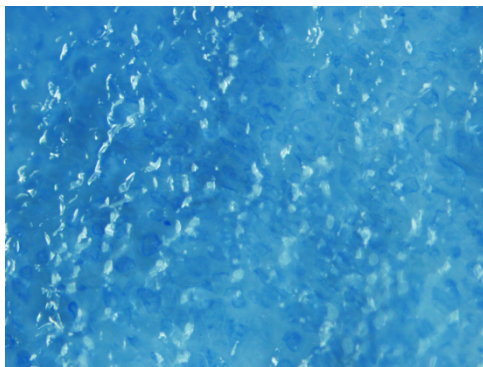
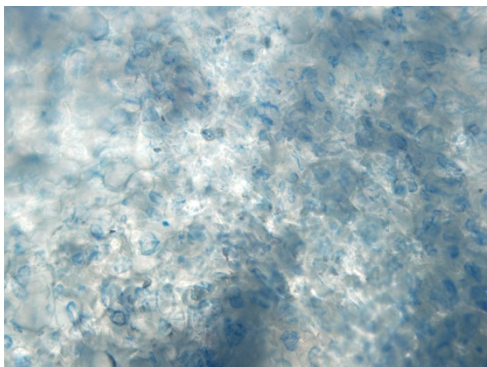
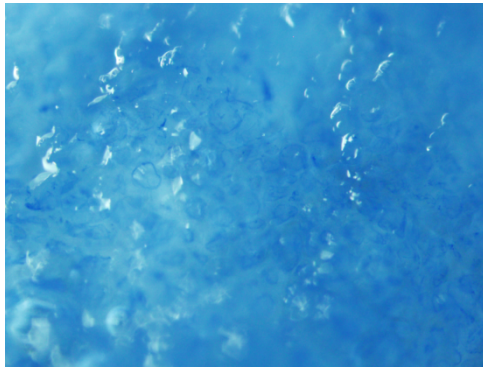
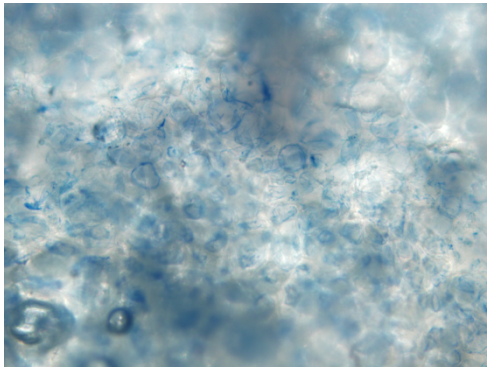
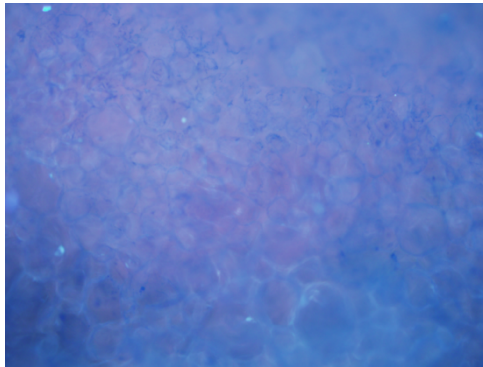
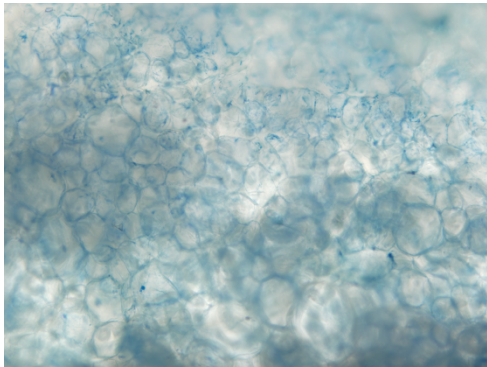
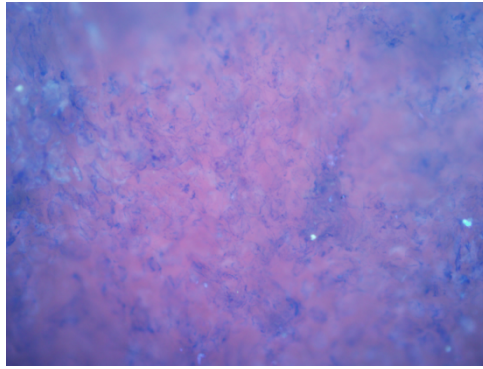
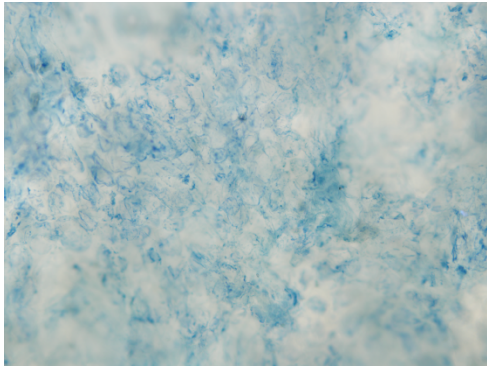


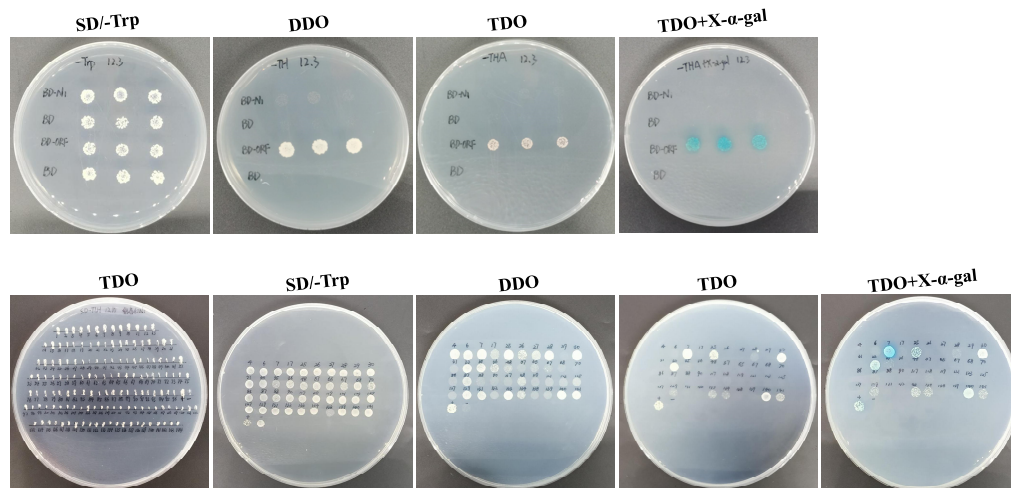
Original data for visual appearance of postharvest peaches



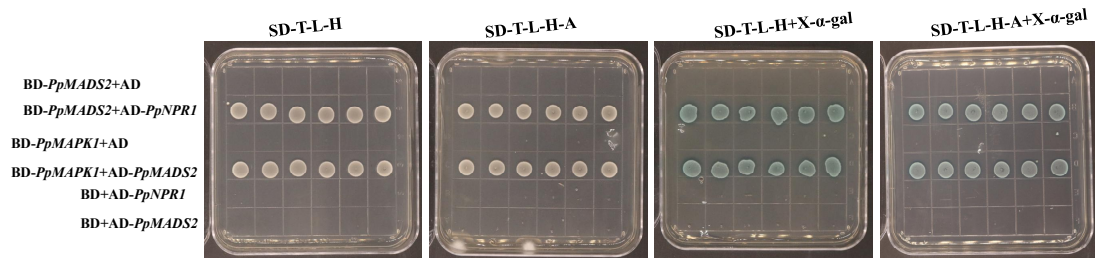
Original data for callose deposition



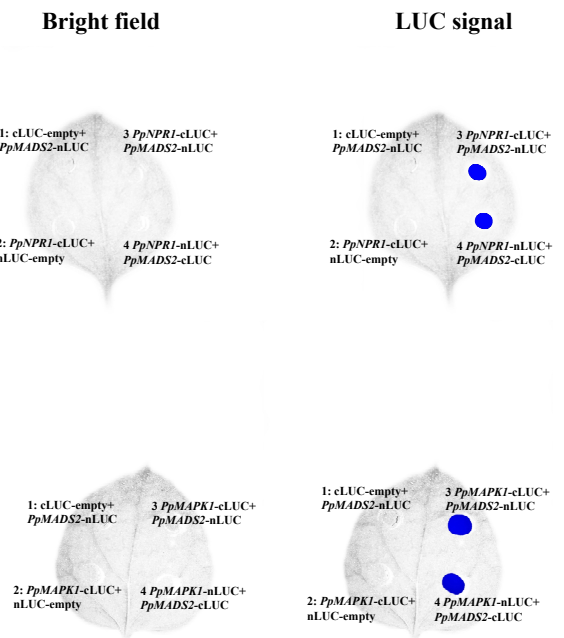
Original data for Y2H screening



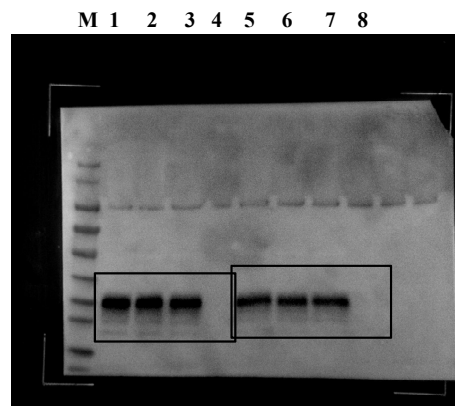
Original data for Y2H



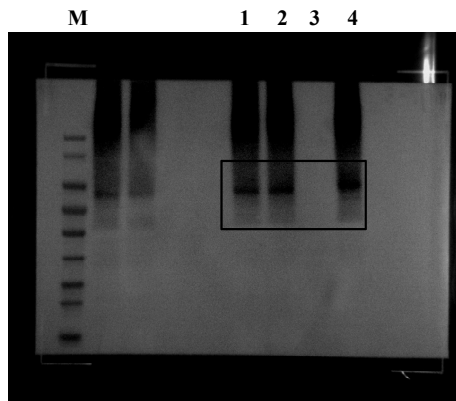
Original data for luciferase complementation imaging (LCI)



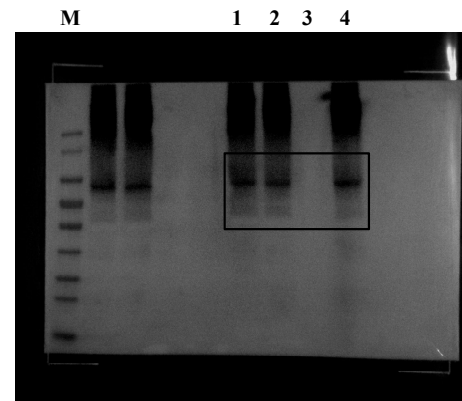
Original data for coimmunoprecipitation (co-IP)



Anti-GFP
M: Prestained protein ladder maker
1: Input: *PpMADS2-GFP+ PpNPR1-CAM*
2: IP:GFP *PpMADS2-GFP+ PpNPR1-CAM*
3: IP:GFP *PpMADS2-GFP*
4:IP:myc *PpNPR1-CAM*
5: Input: *PpMADS2-GFP+ PpMAPK1-CAM*
6: IP:GFP *PpMADS2-GFP+ PpMAPK1-CAM*
7: IP:GFP *PpMADS2-GFP*
8:IP:myc *PpMAPK1-CAM*

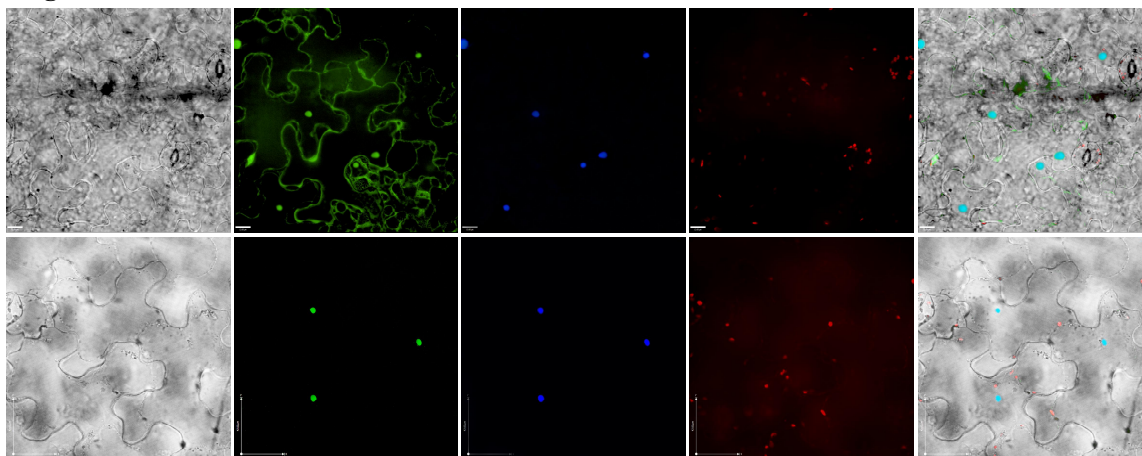


Anti-myc
M: Prestained protein ladder maker
1: Input: *PpMADS2-GFP+ PpNPR1-CAM*
2: IP:GFP *PpMADS2-GFP+ PpNPR1-CAM*
3: IP:GFP *PpMADS2-GFP*
4:IP:myc *PpNPR1-CAM*

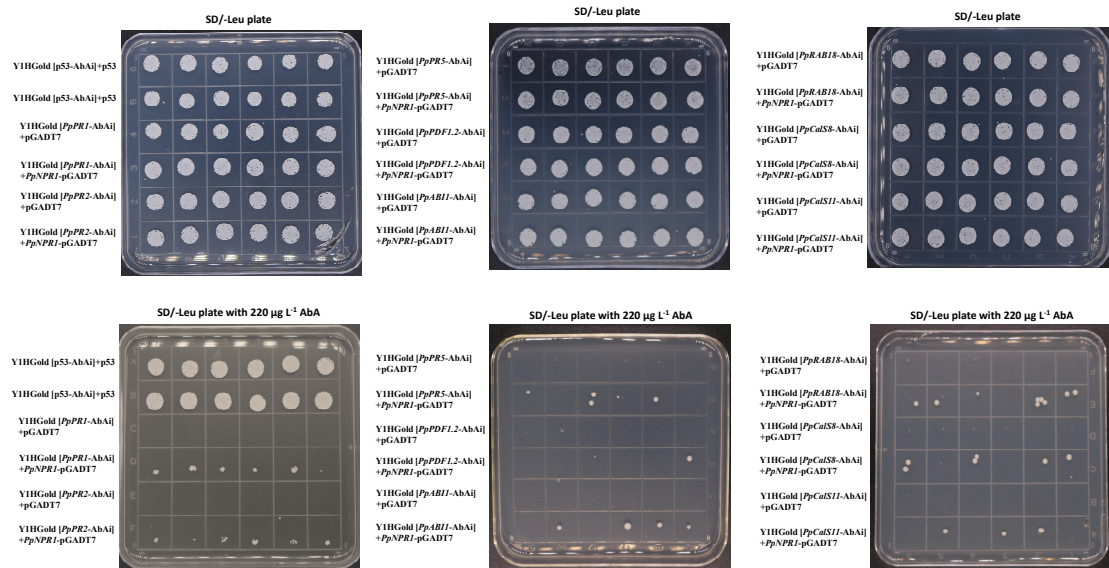


Anti-myc
M: Prestained protein ladder maker
1: Input: *PpMADS2-GFP+ PpMAPK1-CAM*
2: IP:GFP *PpMADS2-GFP+ PpMAPK1-CAM*
3: IP:GFP *PpMADS2-GFP*
4:IP:myc *PpMAPK1-CAM*

Original data for subcellular localization



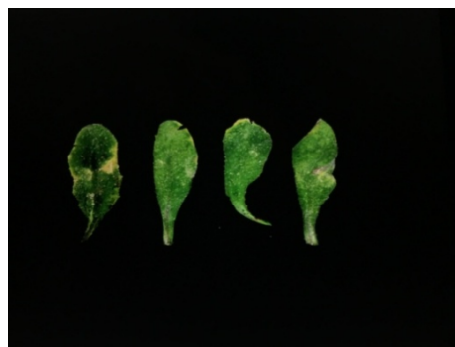
Original data for Y1H



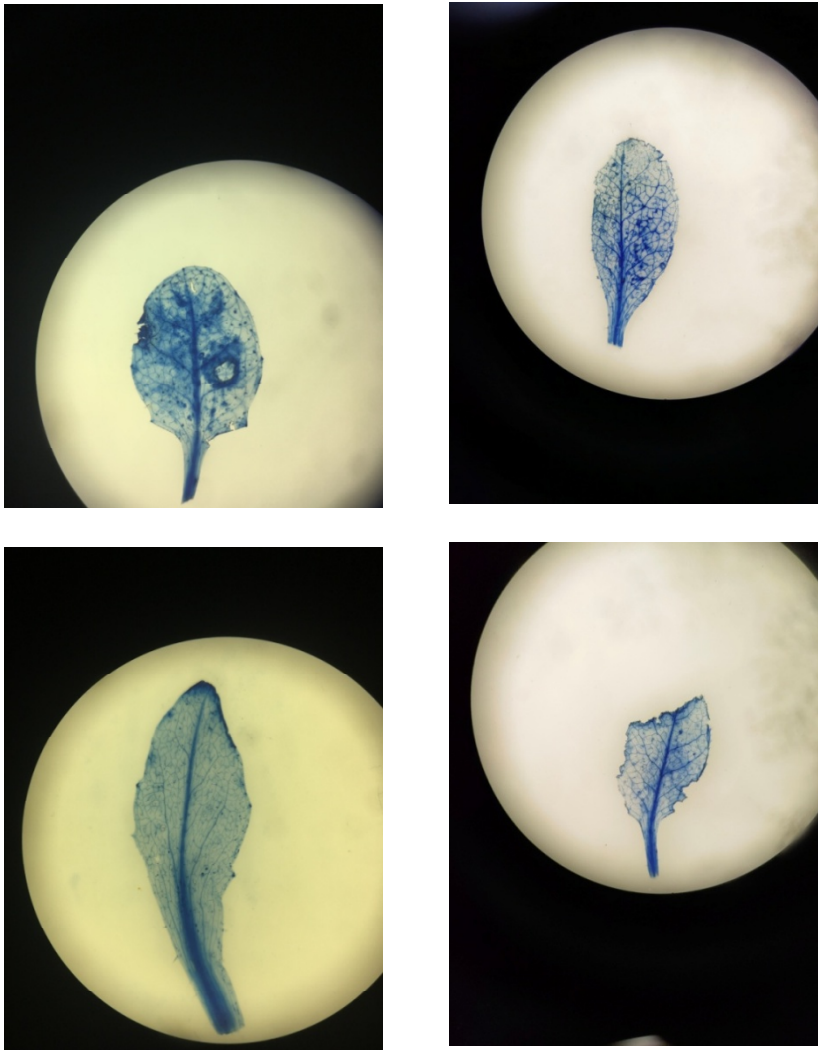
Original data for four-week-old transgenic and wild-type seedlings



Original data for the representative leaves of Col-0 seedling and overexpressors after inoculation with *R. stolonifer* conidia



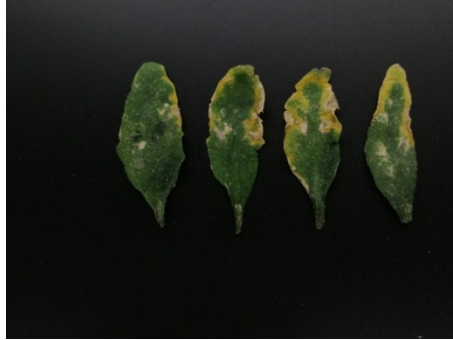
Original data for the representative leaves of Col-0 seedling and overexpressors after trypan blue staining



Original data for four-week-old knockout lines and wild-type seedling



Original data for the representative leaves of Col-0 seedling and knockout lines after inoculation with *R. stolonifer* conidia



Original data for the representative leaves of Col-0 seedling and knockout lines after trypan blue staining

