

How to register as OpenAIRE service provider

services and interoperability guidelines implementation

#ExPaNDS workshop on EOSC

Andreas Czerniak, Bielefeld University Library



Agenda

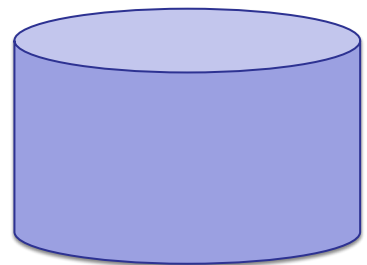
- Introduction
- **PROVIDE - one stop shop for all OpenAIRE content providers**
- Community Gateway's

Introduction

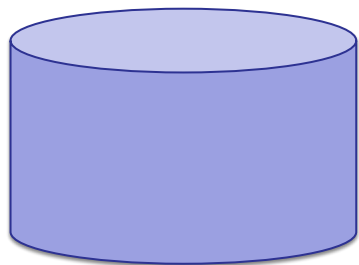
A photograph of three people rappelling down a dark, craggy rock face. They are silhouetted against a bright blue sky with wispy white clouds. The person at the top is a man in a red shirt, the middle is a woman in a green shirt, and the bottom is a man in a red shirt. They are all holding ropes and appear to be descending. The background shows a vast landscape of dark, rolling hills or mountains under the same sky.

*Landscape of repositories &
resource types*

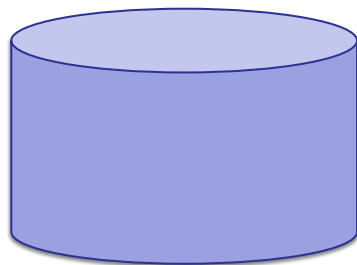
Landscape of Repositories types



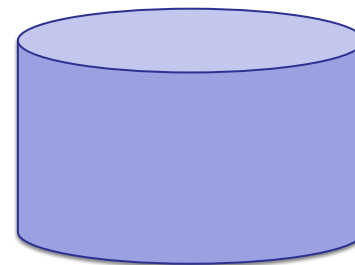
Institutional/
publication
repositories



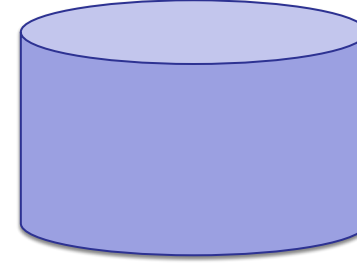
Journals/
publishers



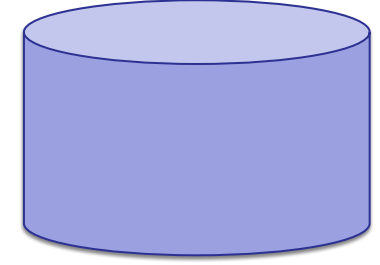
Data
repositories



Software
repositories

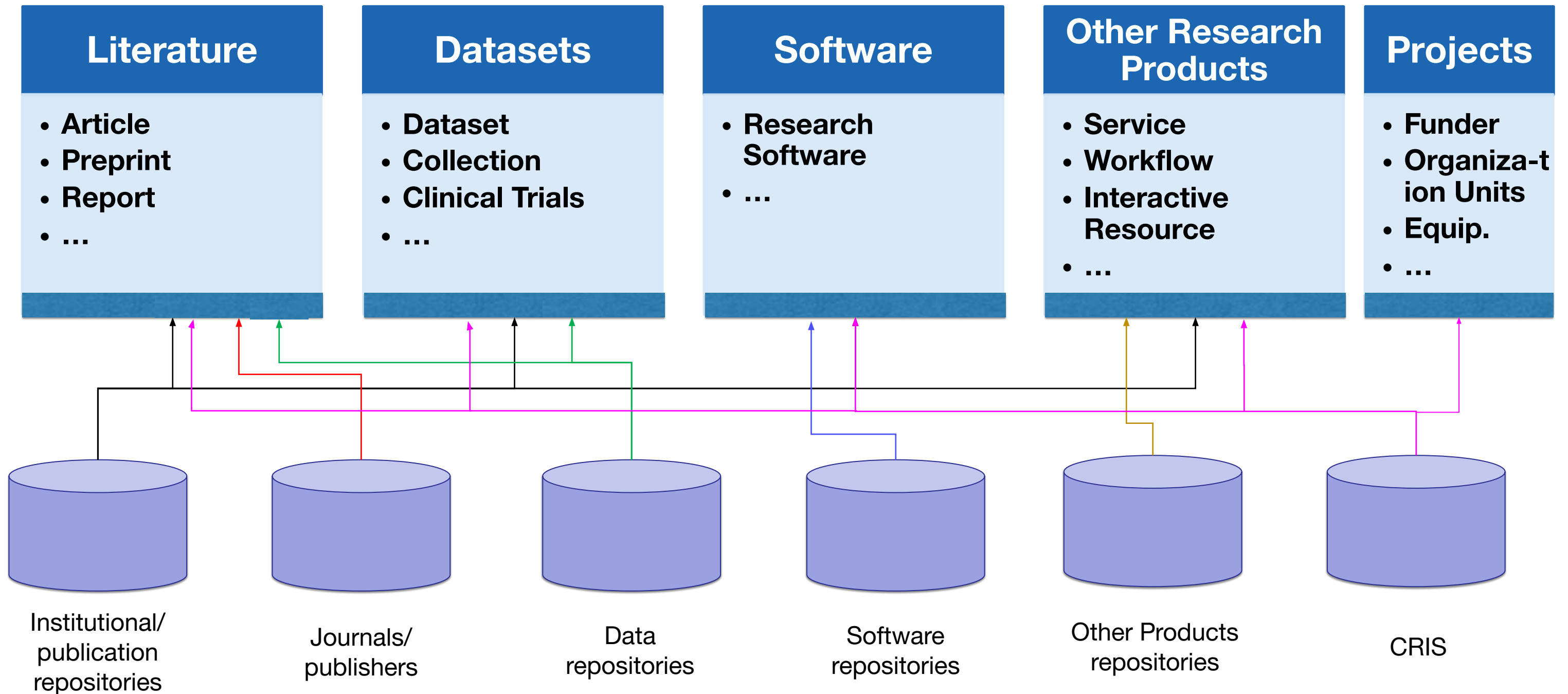


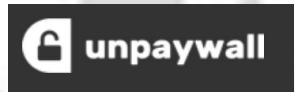
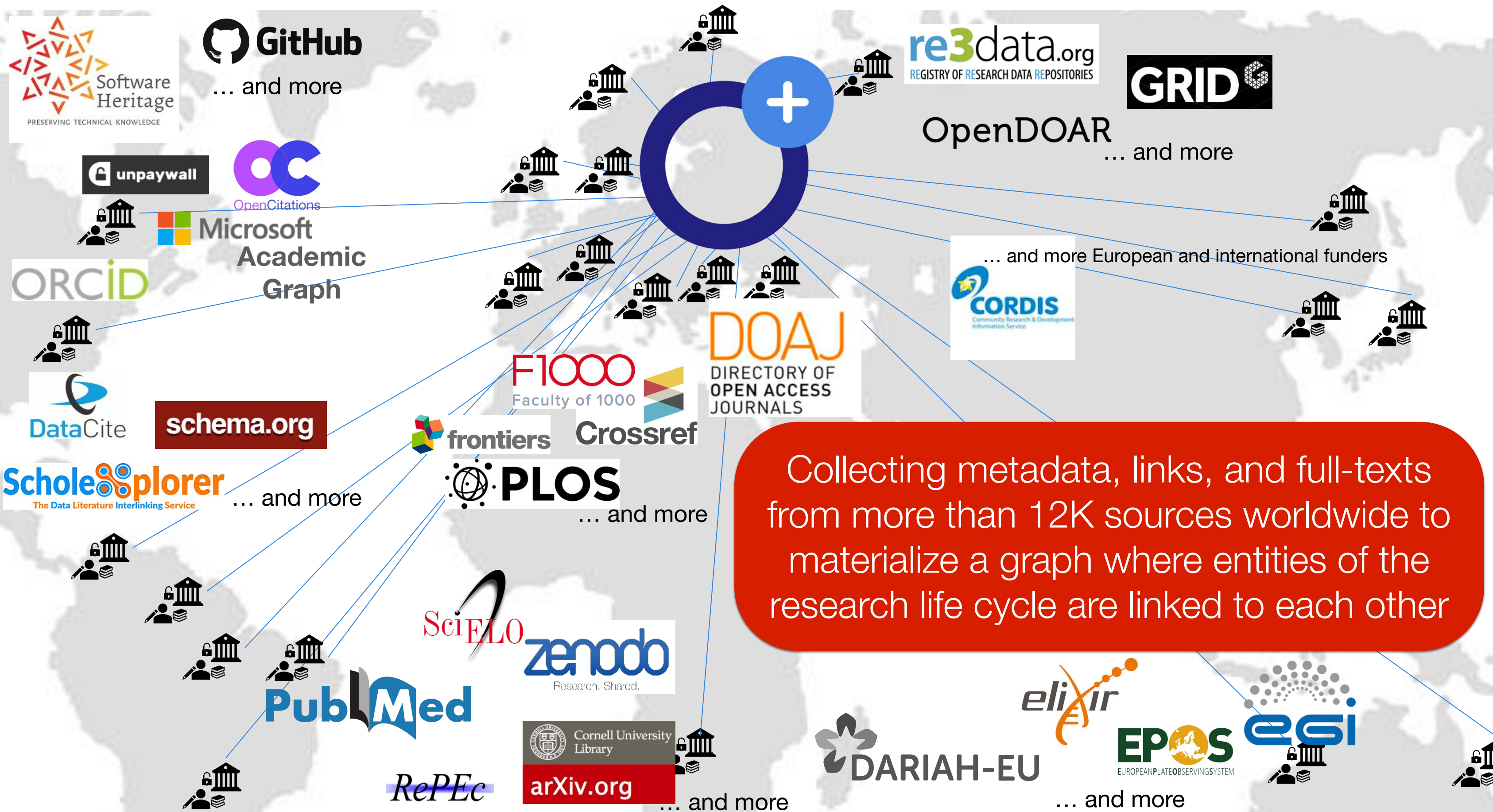
Other Products
repositories



CRIS

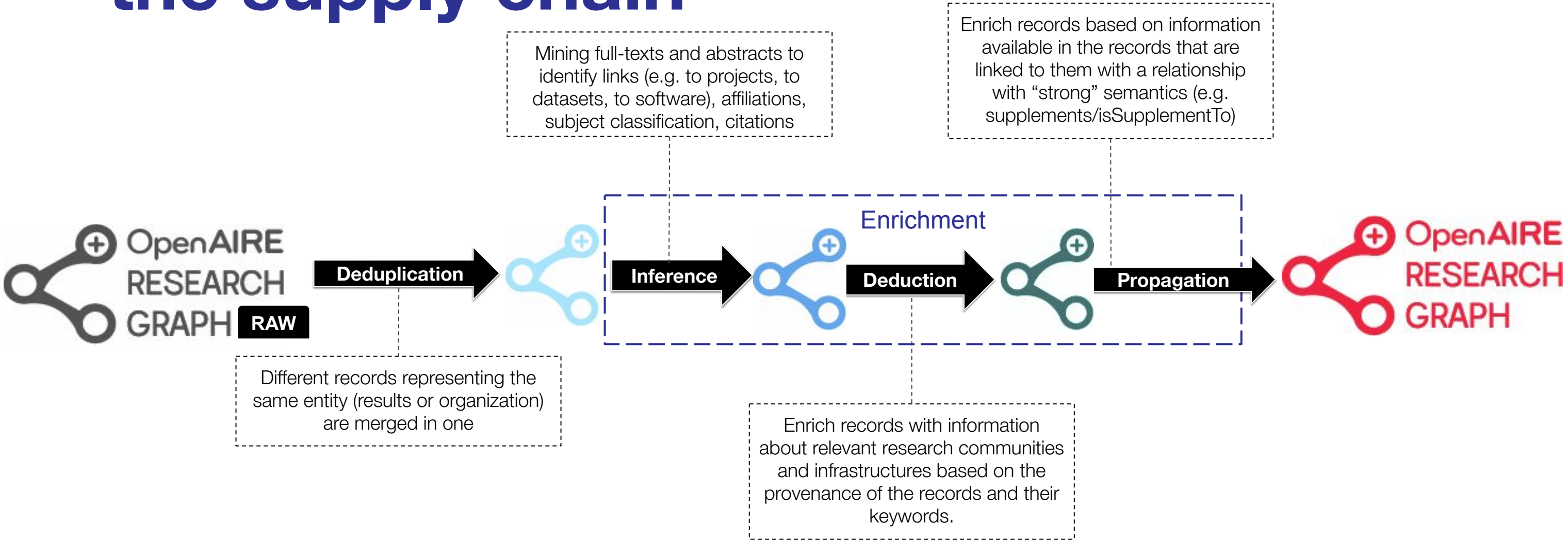
Repository types and research output





OpenAIRE Research Graph

the supply chain





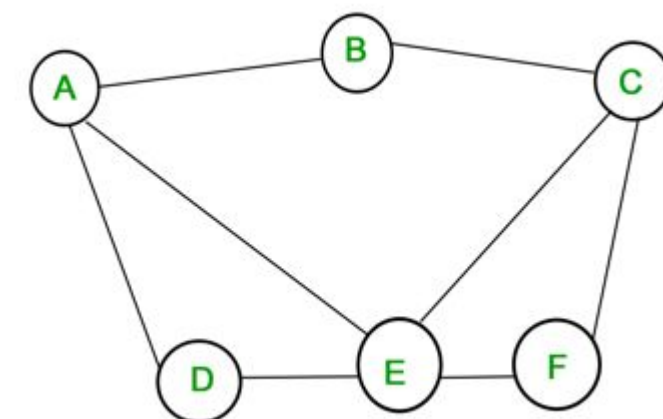
An **open metadata** research graph of interlinked **scientific products**, with **access rights information**, linked to **funding information** and **research communities**



Graph: model for the representation of information

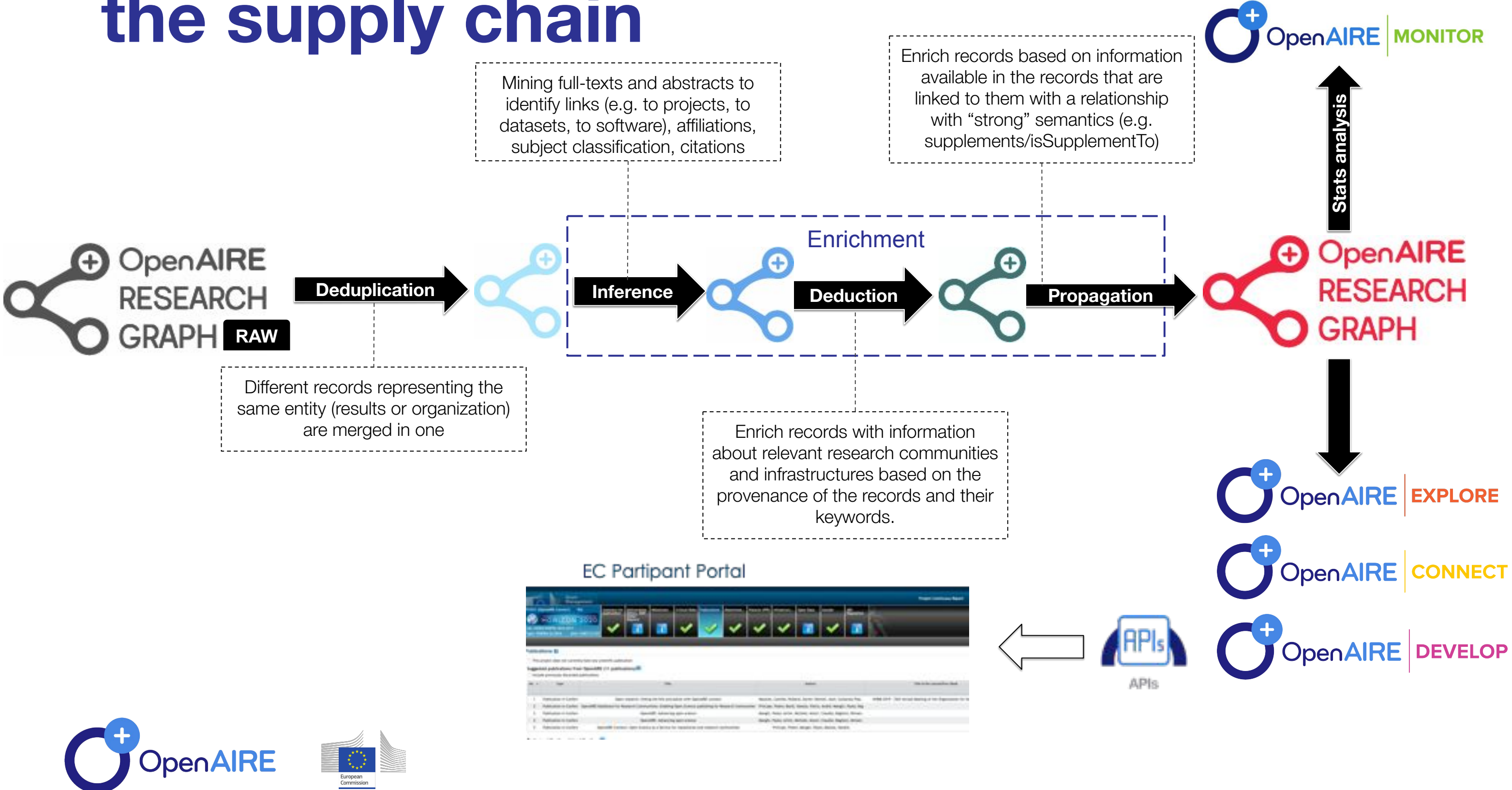
OpenAIRE uses it to represent **objects** in the scholarly communication domain and the **relationships** that exist among them.

Edges of the graph are annotated with a label that specifies the **semantics** of the relationships between two objects, each represented as a node in the graph.



OpenAIRE Research Graph

the supply chain



Integration Scenarios

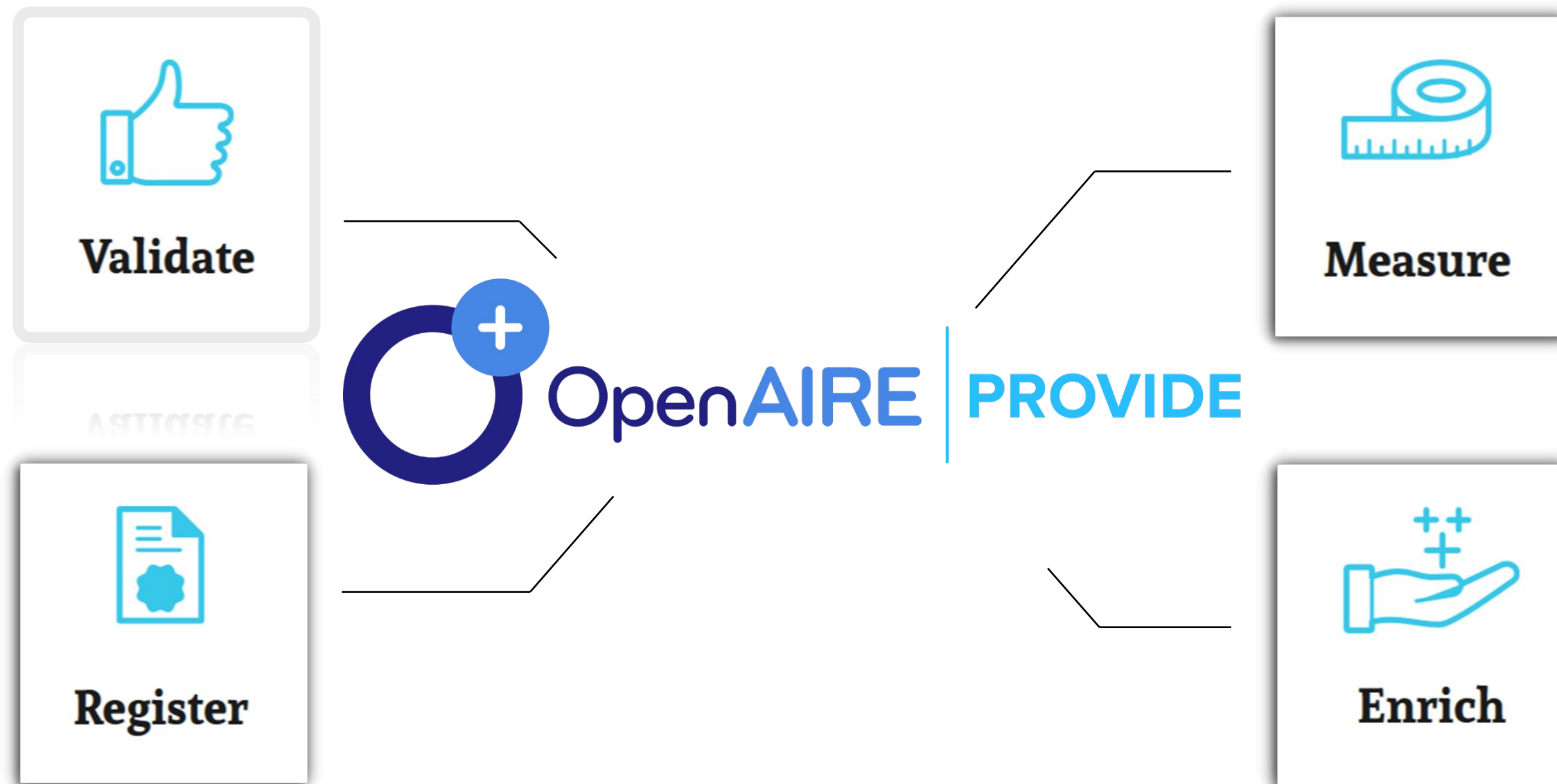
- Directly harvested (from repositories, journals)
- Indirectly harvested (via aggregators, publishers)
 - see “collected from a compatible aggregator” in the Explore portal
 - records are marked to be collected from the aggregator and hosted by the specific repository/journal (if resolvable via OpenDOAR/re3data/ISSN).
 - when the hosting source cannot be resolved, the record appears as hosted by the “Unknown repository”

one stop shop for all OpenAIRE content providers

Services for Repository+Data
Archive+CRIS managers,
OA publishers...

Become a building block of a global
Open Research community. A
gateway to the European Open
Science Cloud.

OpenAIRE Content Provider Dashboard



One-stop-shop web service where content providers interact with OpenAIRE.

It provides the front-end access to many of OpenAIRE's backend services.



Interoperable metadata is key for effective content sharing

VALIDATE

Use our validation service and see how you can apply the OpenAIRE Guidelines to expose your contents using global standards.

Validate your datasource



Literature repository



Data repository



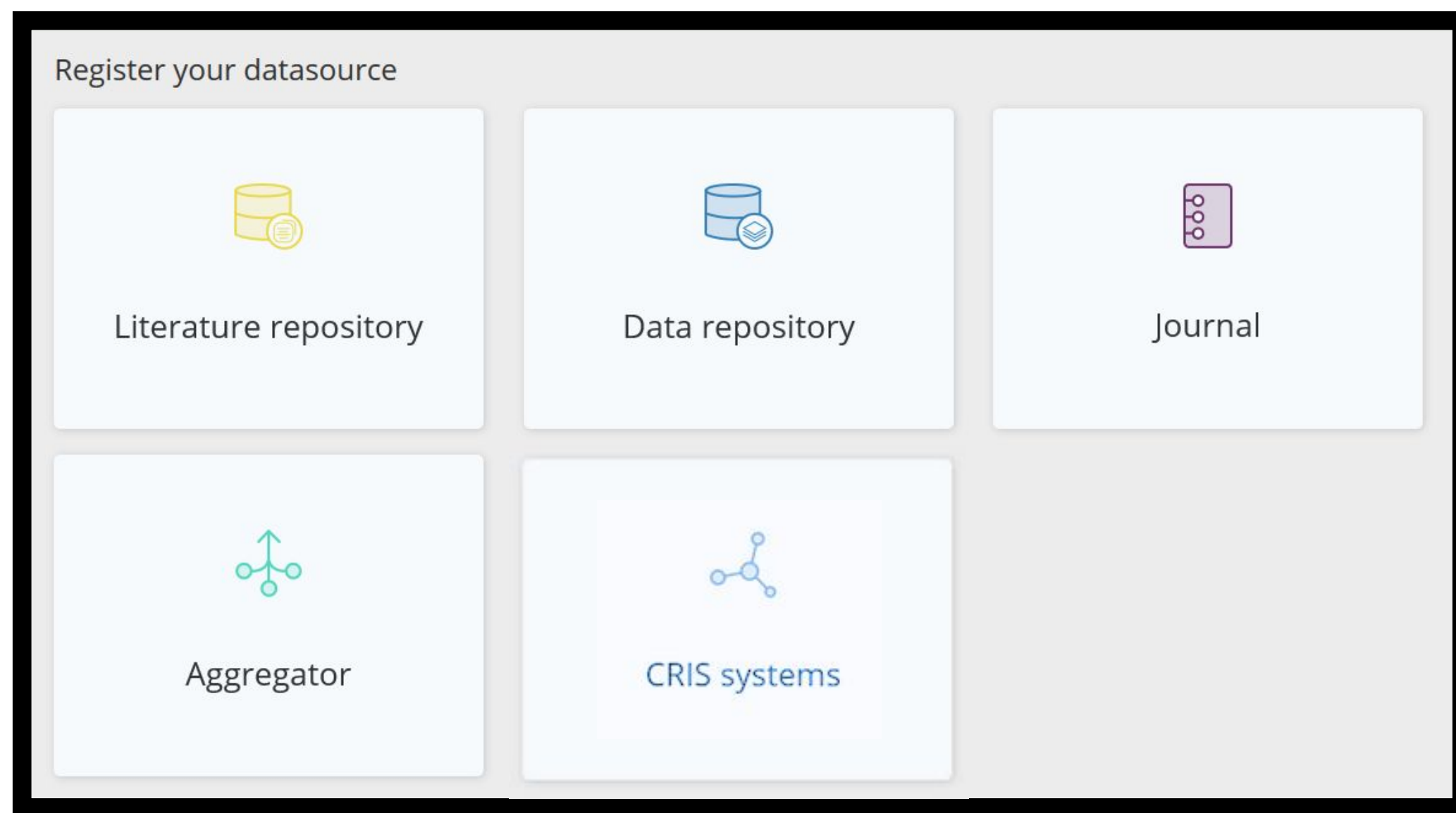
CRIS systems



Reach a wider audience around the world

Register your datasource in OpenAIRE and be part of a global interlinked network.

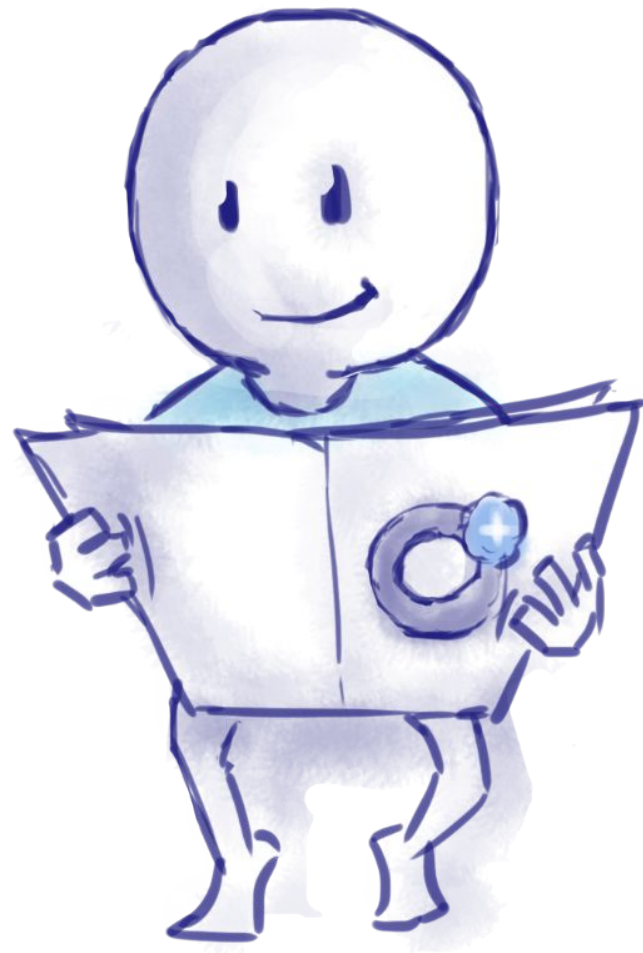
REGISTER



OpenAIRE Guidelines

OpenAIRE Guidelines to expose your metadata in order to integrate with OpenAIRE infrastructure.

<https://guidelines.openaire.eu/en/latest/>



Content Acquisition policy

Literature, Datasets, Software, other research products
OpenAIRE accepts the metadata records of all scientific products whose structure respect the model and semantics as expressed by the OpenAIRE guidelines.

Open Access and non-Open Access material will be included and links to other products will be resolved where this is possible.

<https://www.openaire.eu/data-aquisition-policy>

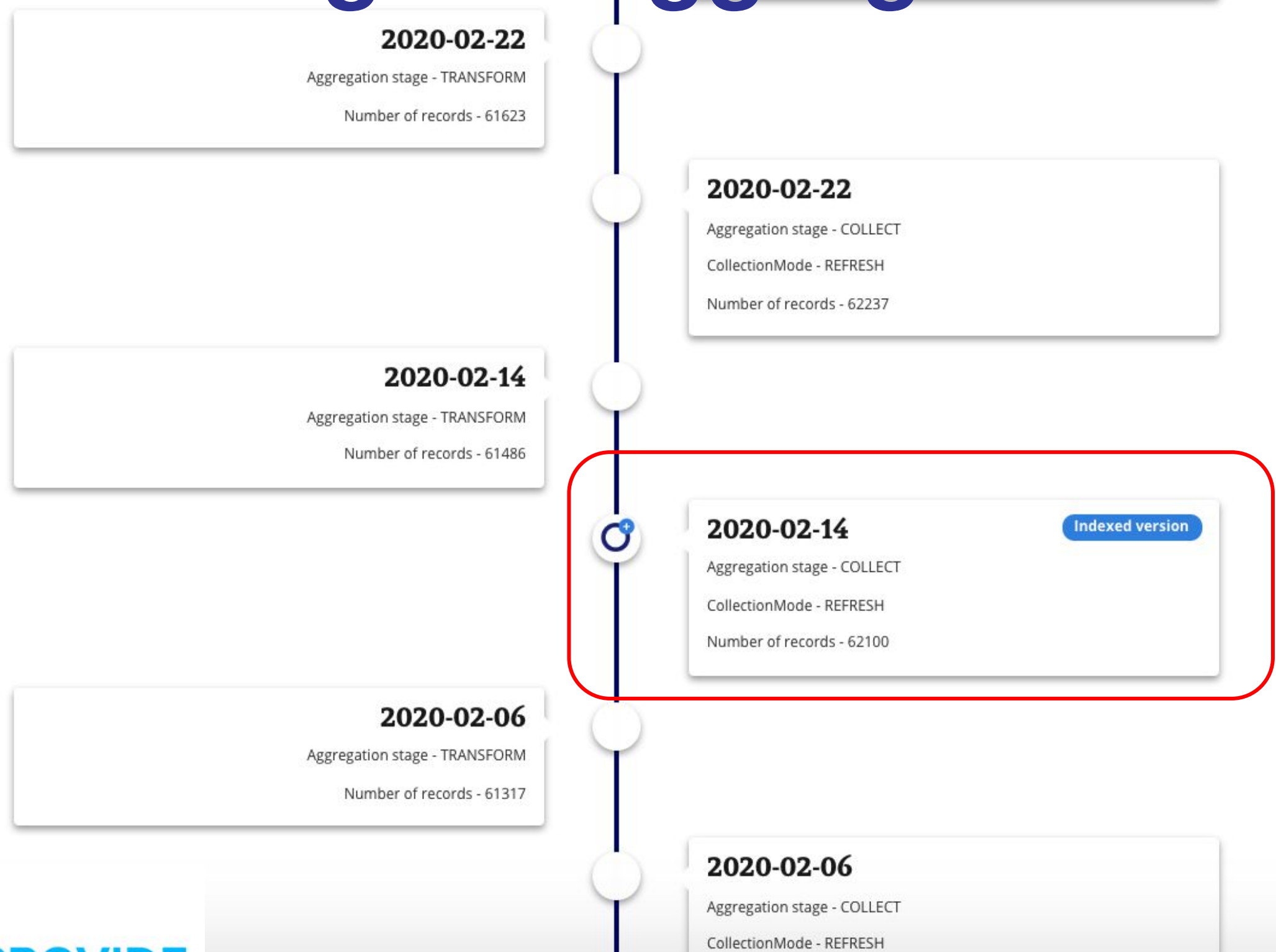
Monitoring the aggregation

Validate

Validation History

Collection Monitor

A data source manager can monitor the aggregation workflow of each data source she/he registered on the Content Provider Dashboard





ENRICH

Improve your metadata. Get more connections

OA Broker service offers a wealth of information on scholarly communication data. Find out what interests you and subscribe to enrich your records.

Enrich Your Content - Browse Events

More

ADDITIONAL METADATA INFORMATION THAT MAY ENRICH OR
SUPPLEMENT UNIVERSIDADE DO MINHO: REPOSITORY CONTENT

OF EVENTS

Missing

MISSING METADATA INFORMATION THAT MAY ENRICH OR
COMPLETE UNIVERSIDADE DO MINHO: REPOSITORY CONTENT

OF EVENTS

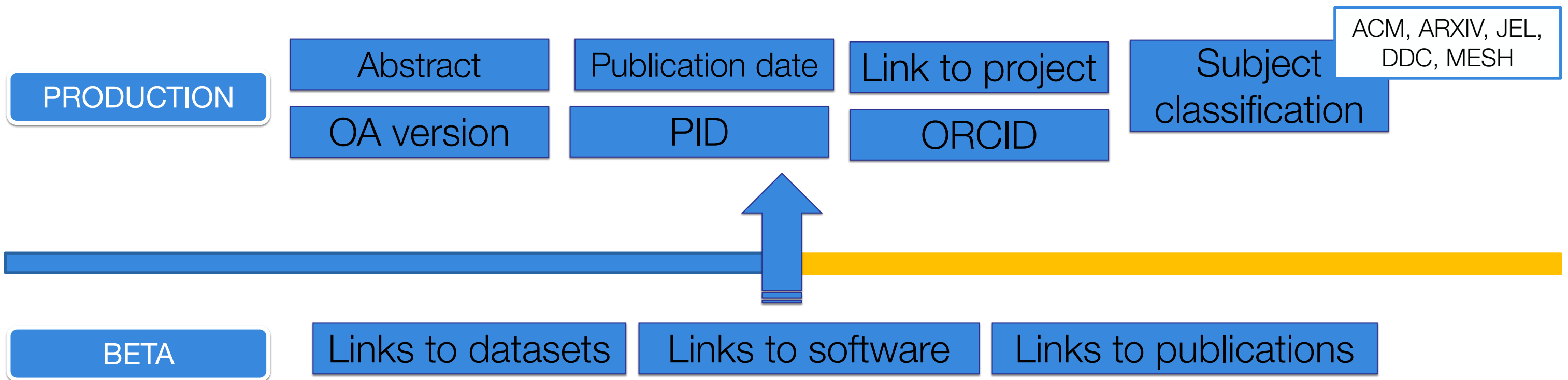
Broker Enrichment Events

ENRICH / MORE

Macro-category that groups events about field values that **differ** from those available in the repository.

ENRICH / MISSING

Macro-category that groups events about field values that are **not present** in the metadata of the repository.



Event trust

Events are produced by *algorithms* that takes decisions using *non-authoritative information*;

Trust as a manner to expose uncertainty

Should I update my
record with this
project reference?

Tweak and refine events

Trust [0.75 - 1]



Title



+ Add another

Author



+ Add another

Subject



+ Add another

Date

From

To



+ Add another

Apply

Clear



MEASURE

Usage Statistics

Open research impact empowers Open Science.

Share usage data via OpenAIRE's global Open Metrics Service. Get the benefit of an aggregated environment to broaden the mechanisms for impact assessment.



OpenAIRE Usage Statistics – How it works

- **(1) Tracking of usage events or (2) retrieving COUNTER reports on scholarly work items in repositories**
- **Applying rules based on COUNTER CoP**
- **Aggregating metrics on usage for scholarly works**
- **Repository plugins to track usage events**

- R Register
- V Validator
- N Notifications

REPOSITORIES

Universidade do Minho: Reposit...

Hide Controls

Universidade do Minho: RepositoriUM

- DASHBOARD
- UPDATE
- AGREGGATION HISTORY
- ENRICHMENTS
- USAGE STATISTICS

Records collected on 2020-03-15

50,046

Enrichments

44,028

Downloads

1,034,149

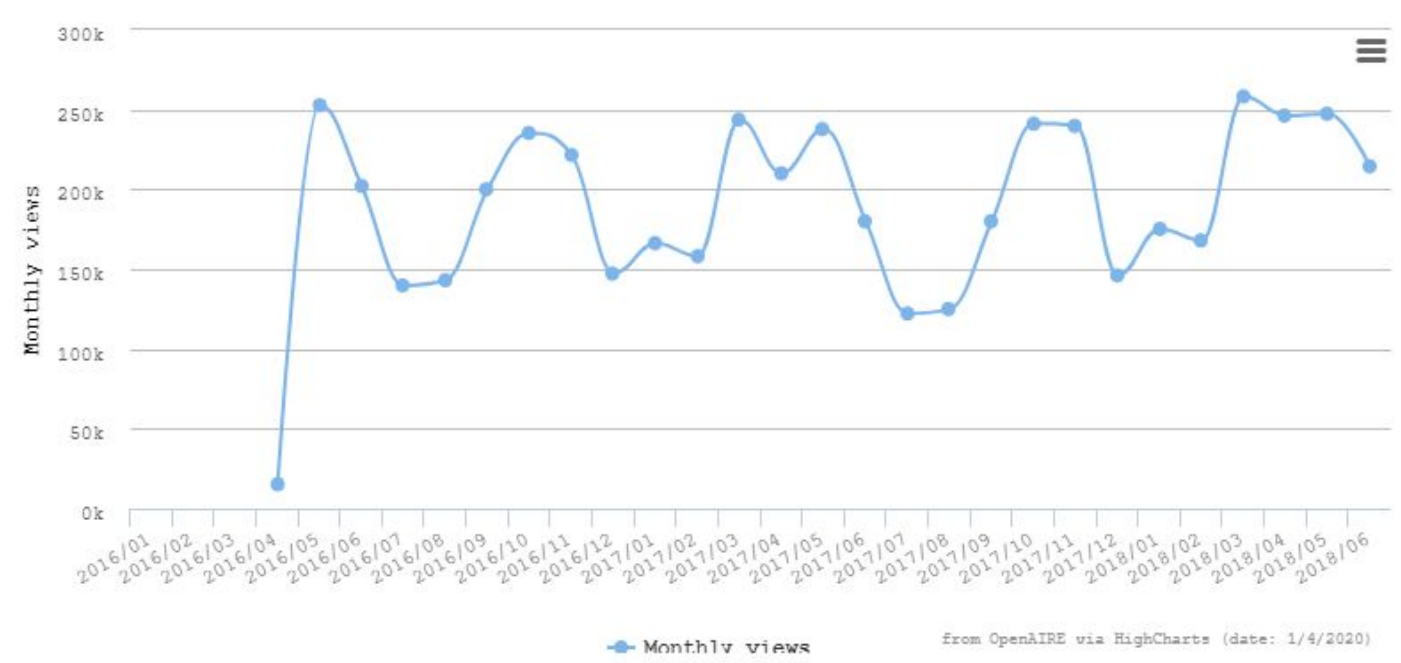
Views

11,725

Aggregation History

- 2020-04-01
Aggregation stage TRANSFORM
Number of records 49,824
- 2020-04-01
Aggregation stage COLLECT
Collection mode REFRESH
Number of records 50,259
- 2020-03-28
Aggregation stage TRANSFORM
Number of records 49,773
- 2020-03-28
Aggregation stage COLLECT

Usage Statistics



Last month's reports

- AR1
- IR1
- RR1
- BR1
- BR2

NEW VERSION
Closer to users' needs
Discover the Provide functionalities
in a more friendly interaction.

Your data is valuable. Get connected. Participate

The Provide Dashboard is a one-stop-service where content providers interact with OpenAIRE and become a building block of a global Open Research community. A gateway to the European Open Science Cloud.

[SIGN IN](#)

**EUROPEAN OPEN
SCIENCE CLOUD**

<https://provide.openaire.eu>

PROVIDE Dashboard brings all your data together

Get front-end access to many of OpenAIRE's backend services



Community Gateways'

*Special view to
research output*

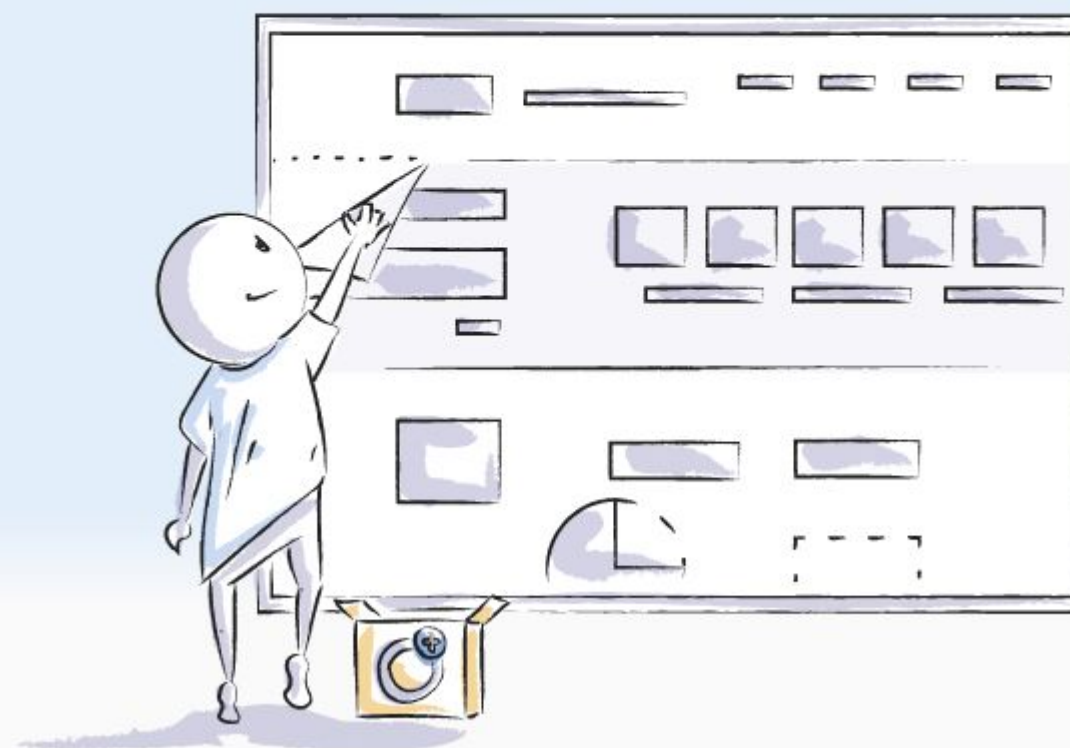
Build a **Gateway** for your **Community**.

Turn Open Science into Practice.

It takes your open and linked research outcomes.

A service customized to your needs.

LEARN HOW



Community Gateways already in action



Assessing the socio-economic impact of digitalisat ...

The scope of this community is to provide access to publications, research data, projects and software for assessing the...

[VISIT](#)



Corona Virus Disease

This portal provides access to publications, research data, projects and software that may be relevant to the Corona Vir...

[VISIT](#)



Transport Research

Welcome to the Open Research Gateway for Transport Research. This gateway is part of the TOPOS Observatory (<https://www....>

[VISIT](#)



Agricultural and Food Sciences

The scope of this community is to provide access to publications, research data, projects and software that are related ...

[VISIT](#)



DARIAH EU

The Digital Research Infrastructure for the Arts and Humanities (DARIAH) aims to enhance and support digitally-enabled r...

[VISIT](#)

[BROWSE ALL >](#)

Corona Virus Disease

COVID-19



Research outcomes

Search by title, author, abstract, DOI, orcid...

SEARCH

[Advanced Search](#)

SUMMARY

PUBLICATIONS
248,833RESEARCH DATA
8,710SOFTWARE
916OTHER RESEARCH
11,491

Recent Publications

[VIEW ALL →](#)[Publication](#) . Other Literature Type . 2563**รายงานผู้ป่วยโรคติดเชื้อไวรัสโคโรนา 2019 (COVID-19): ผู้ป่วยรายแรกของประเทศไทยและนอกประเทศจีน**

Authors: อนุตรา รัตนินราทร;

DOI: [10.14456/jbidi.2020.11](https://doi.org/10.14456/jbidi.2020.11) 

Publisher: สถาบันปαραศนราดูล

[Publication](#) . Other Literature Type . 2563**การรับรู้และพฤติกรรมการป้องกันโรคติดเชื้อไวรัสโคโรนา 2019 (COVID-19) ของทันตภิบาลสังกัดกระทรวงสาธารณสุข**

Authors: นกษา สิงห์วีรธรรม;

[DEPOSIT](#)[LINK](#)[SEARCH](#)[ABOUT](#)[AC](#)

European Marine Science

[Subscribed](#)[Research outcomes](#)[SEARCH](#)[Advanced Search](#)[SUMMARY](#)[PUBLICATIONS](#)
80,784[RESEARCH DATA](#)
9,876[SOFTWARE](#)
1,030[OTHER RESEARCH](#)
3,203

Recent Publications

[VIEW ALL →](#)

Publication · Article · 2021

Genomics- and Metabolomics-Based Investigation of the Deep-Sea Sediment-Derived Yeast, *Rhodotorula mucilaginosa* 50-3-19/20B

[OPEN ACCESS](#)[ENGLISH](#)

Authors: Buedenbender, Larissa; Kumar, Abhishek; Blümel, Martina; Kempken, Frank; Tasdemir, Deniz;

DOI: [10.3390/md19010014](https://doi.org/10.3390/md19010014) [↗](#)

Publisher: MDPI AG

Red yeasts of the genus *Rhodotorula* are of great interest to the biotechnological industry due to their ability to produce valuable natural products, such as lipids and carotenoids with potential applications as surfactants, food additives, and pharmaceuticals. H...

Thank you!

Andreas Czerniak

andreas.czerniak@uni-bielefeld.de

<https://orcid.org/0000-0003-3883-4169>

<https://doi.org/10.5281/zenodo.4664037>

www.openaire.eu/provide-community-calls