

A checklist of long horn beetles (Coleoptera: Cerambycidae) of Lumami, Zunheboto District, Nagaland with 23 new records

Lobeno Mozhui¹, Amit Rana², Kelevikho Neikha¹ and L.N. Kakati^{1*}

¹Department of Zoology, Nagaland University, Lumami 798627, Nagaland, India.

²Zoological Survey of India, North Eastern Regional Centre, Shillong 793003, Meghalaya, India.

(Email: Inkakati@nagalanduniversity.ac.in)

Abstract

A checklist of long horn beetles (Coleoptera: Cerambycidae) within the geographical area of Lumami under Zunheboto District, Nagaland is provided. As per the current checklist there are 36 long horn beetle species classified under 31 genera, 18 tribes and 3 sub-families (Prioninae, Cerambycinae and Lamiinae); of which 23 species are new records for the state of Nagaland. For each species, accepted nomenclature followed by all relevant works reporting systematic classification and distribution within and outside India is provided. The checklist is based on specialized literature sources, collections and faunistic researches made by the authors.

Keywords: *Cerambycidae*, long horn beetles, Lumami, Nagaland, new record, Zunheboto.

Received: 11 June 2020; Revised: 30 December 2020; Online: 31 December 2020

Introduction

The representatives of the family Cerambycidae are commonly known as longhorn beetles and can be easily recognised from other families of Coleoptera by its elongated and somewhat parallel-sided body, long antennae and pseudo tetramerous tarsi. With more than 36,000 described species in more than 5000 genera from eight subfamilies, Cerambycidae is one of the biggest families of Coleoptera (Monne *et al.*, 2017). However, in spite of having immense economic and ecological importance, the family is one of the least studied in India (Kariyanna *et al.*, 2017). Similarly, even though Nagaland is recognized as one of the major biodiversity hotspot (Indo-Burma) region of the World (supporting different unique floral and faunal species association), faunal diversity especially Cerambycidae is least studied. Except for faunistic information of Coleoptera belonging to 7 families i.e., Silvanidae, Inoepidae, Erotylidae, Endomychidae, Monotomidae, Discolomidae and Languriidae (Anonymous, 2005); and systematic account of 19 species by Mitra *et al.* (2016) and a mention of 4 species by Mozhui *et al.* (2017), no proper documentation is available within the state of Nagaland. The present study is therefore, an

effort to present the distribution and diversity of long horn beetles within the geographical area of Lumami in Zunheboto District, Nagaland.

Materials and Methods

a) Study Area:

Sharing international border with Myanmar, Nagaland is a mountainous state in North-East India. The state harbours rich faunal diversity including various species of insects; however, the region is understudied as many areas are difficult to access due to poor road connectivity. Lumami is located at 26.20°N and 94.47°E and 942 meters above sea level (Fig. 1) and with its unique geographical location, the region hosts variety of habitats. With semi-evergreen forest, the area is dominated by *Abroma augusta* (L.) L.f., *Bauhinia variegata* (L.) Benth., *Callicarpa arborea* Roxb., *Duabanga grandiflora* (Roxb. ex DC.) Walpers, *Ficus racemosa* L., *Lagerstroemia speciosa* (L.) Pers., Oak trees (*Quercus griffithii* Hook.f. & Thomson ex Miq. and *Quercus serrata* Murray), *Prunus cerasoides* Buch.-Ham. ex D.Don, *Schima wallichii* (DC.) Korth. and

Terminalia myriocarpa van Heurck & Müll. Arg.

b) Methodology:

The specimens were collected from Lumami during 2014 to 2020. The specimens were collected from trees, flowers, leaves and wooden logs involving various collection

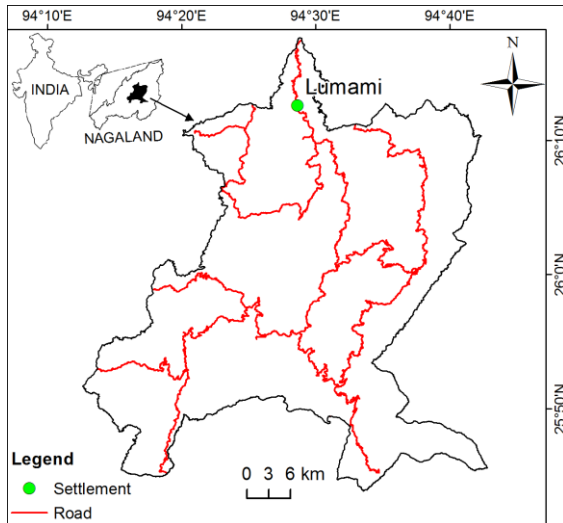


Figure 1: Location of Lumami (Zunheboto district), Nagaland (Source: Survey of India toposheets)

methods and picked carefully with the help of forceps; after which they were gently placed in a jar and killed with the help of benzene (Chandra *et al.*, 2015). They were then brought to the laboratory where the collected specimens were first properly relaxed and pinned and oven dried. The specimens were examined under Labomed CZM6 stereo zoom microscope, photographed with Nikon DSLR D5200 and labeled with Adobe Photoshop v7.0. The specimens were identified using relevant books and literatures (Gahan, 1906; Beeson and Bhatia, 1939; Breuning, 1964; Cherepanov, 1990; Mukhopadhyay and Biswas, 2000a, b; Shylesha *et al.*, 2004; Mukhopadhyay and Halder, 2004; Komiya and Drumont, 2010; Agarwala and Bhattacharjee, 2012; Mitra *et al.*, 2016a, b, c; Kariyanna *et al.*, 2017; Monné *et al.*, 2017; Behere *et al.*, 2019) and were compared with reference collections from Zoological Survey of India, North Eastern Regional Centre, Shillong.

Results

The present study reports a total of 36 species belonging to 31 genera of 18 tribes under 3 sub-families described below (Plate 1-

4). Earlier reports of long horn beetles from Nagaland as well as 23 new records are mentioned in the remarks for each species.

Checklist of Collected Specimens

Systematic Account

Subfamily: Prioninae Latreille, 1802

Tribe: Aegosomatini Thomson, 1861

1. *Baralipton maculosum* (Thomson, 1857)

Material examined: District Zunheboto, Village Lumami (Regd. No. NU/ZOO/LB-01(1)/2014).

Antennae: 10 segments; Body length: 35 mm; Head: 15 mm.

Distribution: India: Arunachal Pradesh, Assam, Sikkim and West Bengal (Kolkata); *Elsewhere:* China (Yunnan), Laos, Myanmar, Thailand and Vietnam.

Remark: First record from Nagaland.

2. *Nepiodes bowringi* (Gahan, 1894)

Material examined: District Zunheboto, Village Lumami (Regd. No. NU/ZOO/LB-02(1)/2014).

Antennae: 10 segments; Body length: 15 mm; Head: 5 mm.

Distribution: India: Arunachal Pradesh, Assam, Nagaland and Sikkim; *Elsewhere:* Myanmar and Nepal.

Remark: Reported in Mitra *et al.*, 2016a; 2017.

3. *Nepiodes costipennis* (White, 1853)

Material examined: District Zunheboto, Village Lumami (Regd. No. NU/ZOO/LB-03(1)/2014).

Antennae: 10 segments; Body length: 13 mm; Head: 6 mm.

Distribution: India: Arunachal Pradesh, Assam, Manipur, Nagaland, North India, Sikkim and West Bengal; *Elsewhere:* China (Sichuan, Xizang, Yunnan), Bangladesh, Myanmar, Nepal and Pakistan.

Remark: Reported in Mitra *et al.*, 2016a, 2017.

Tribe: Macrotomini Thomson, 1860

4. *Bandar pascoei* (Lansberge, 1884)

Material examined: District Zunheboto, Village Lumami (Regd. No. NU/ZOO/LB-04(1)/2014).

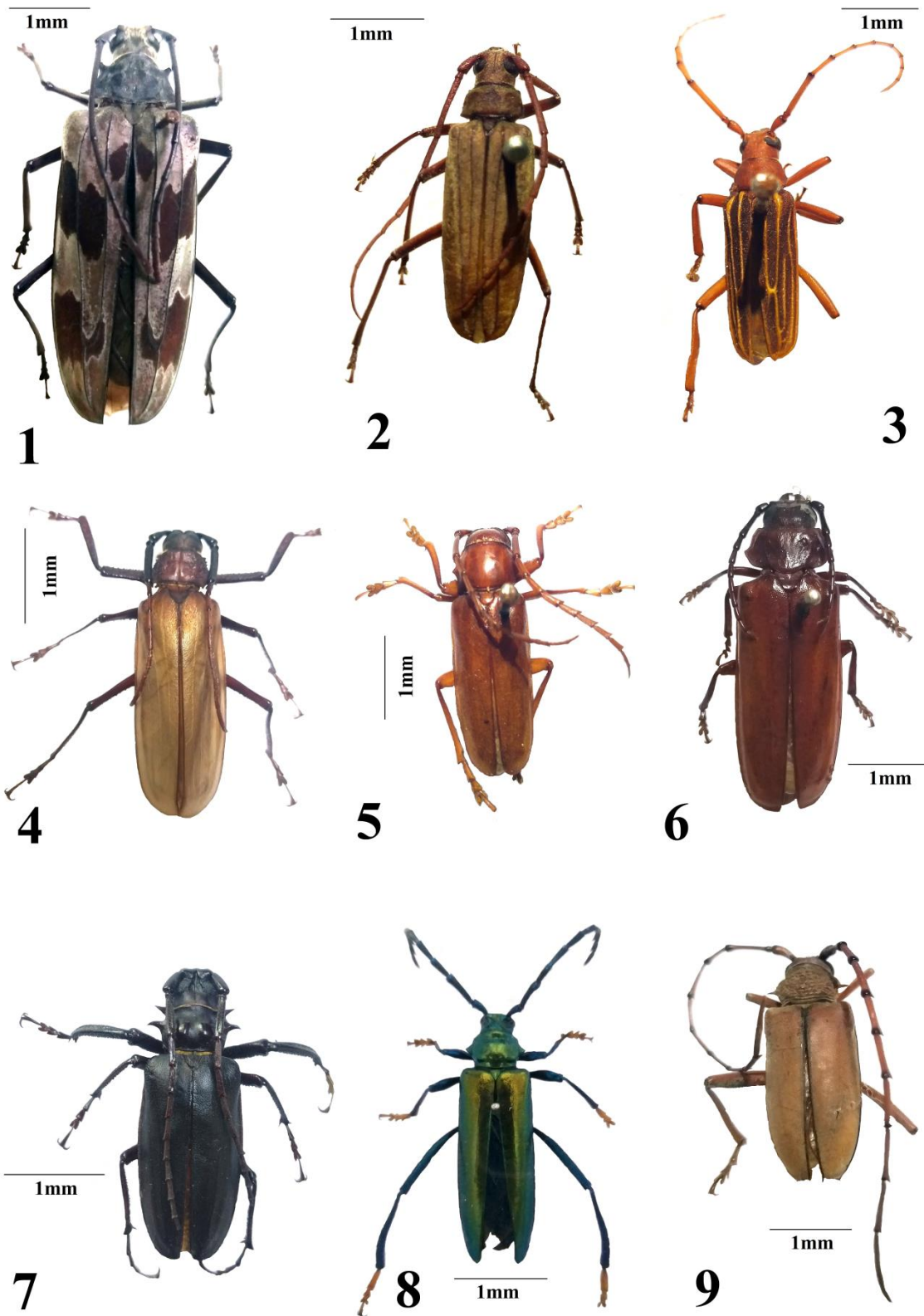
Antennae: 10 segments; Body length: 45 mm; Head: 17 mm.

Distribution: India: Arunachal Pradesh, Assam, Gujarat, Himachal Pradesh, Sikkim,

Tripura and West Bengal (Darjeeling);
Elsewhere: Borneo, China, Indonesia (Java,
Sumatra), Laos, Malaysia, Myanmar, Nepal,

Philippines, Sri Lanka, Thailand, Tibet and
Vietnam.

Remark: First record from Nagaland.



Figures 1-9: Long horn beetles of Lumami, Nagaland: 1. *Baralipton maculosum*; 2. *Nepiodes bowringi*; 3. *Nepiodes costipennis*; 4. *Bandara pascoei*; 5. *Dorysthenes buqueti*; 6. *Dorysthenes indicus*; 7. *Prionomma bigibbosum*; 8. *Aphrodisium cantori*; 9. *Neoplocaederus obesus*.

Tribe: Prionini Latreille, 1802

5. *Dorysthenes buqueti* (Guérin-Méneville, 1844)

Material examined: District Zunheboto, Village Lumami (Regd. No. NU/ZOO/LB-05(1)/2014).

Antennae: 11 segments; Body length: 11 mm; Head: 7 mm.

Distribution: India: Assam and Meghalaya; *Elsewhere:* Bangladesh, China (Guangxi, Yunnan), Indonesia (Java), Laos, Malaysia, Myanmar, Nepal and Thailand.

Remark: First record from Nagaland.

6. *Dorysthenes indicus* (Hope, 1831)

Material examined: District Zunheboto, Village Lumami (Regd. No. NU/ZOO/LB-06(1)/2014).

Antennae: 10 segments; Body length: 28 mm; Head: 10 mm.

Distribution: India: Arunachal Pradesh, Manipur, Meghalaya, Sikkim and West Bengal (Darjeeling); *Elsewhere:* Bhutan, China (Xizang) and Nepal.

Remark: First record from Nagaland.

7. *Prionomma bigibbosum* (White, 1853)

Material examined: District Zunheboto, Village Lumami (Regd. No. NU/ZOO/LB-07(3)/2014).

Antennae: 11 segments; Body length: 32 mm; Head: 10 mm.

Distribution: India: Assam, Manipur, Meghalaya and Sikkim; *Elsewhere:* Bangladesh, China (Yunnan, Hainan), Laos, Myanmar and Thailand.

Remark: First record from Nagaland.

Subfamily: Cerambycinae Latreille, 1802

Tribe: Callichromatini Swainson & Shuckard, 1840

8. *Aphrodisium cantori* (Hope, 1840)

Material examined: District Zunheboto, Village Lumami (Regd. No. NU/ZOO/LB-01(1)/2015).

Antennae: 10 segments; Body length: 34 mm; Head: 12 mm.

Distribution: India: Assam, Gujarat, Manipur, Meghalaya, Sikkim, Tripura, Tamil Nadu, Uttar Pradesh, Uttarakhand and West Bengal (Darjeeling); *Elsewhere:* Bangladesh, China (Guangxi), Laos, Myanmar, Nepal, Sri Lanka and Vietnam.

Remark: First record from Nagaland.

Tribe: Cerambycini Martins & Monné, 2002

9. *Neoplocaederus obesus* (Gahan, 1890)

Material examined: District Zunheboto, Village Lumami (Regd. No. NU/ZOO/LB-02(1)/2015).

Antennae: 10 segments; Body length: 20 mm; Head: 8 mm.

Distribution: India: Andaman Islands, Arunachal Pradesh, Assam, Maharashtra, Manipur, Nagaland, Odisha, Sikkim and West Bengal; *Elsewhere:* Laos, Myanmar, South China, Sri Lanka, Thailand and Vietnam.

Remark: Reported in Mitra *et al.*, 2016a, 2017.

10. *Trirachys indutus* (Newman, 1842)

Material examined: District Zunheboto, Village Lumami (Regd. No. NU/ZOO/LB-08(3)/2014/2020).

Antennae: 10 segments; Body length: 28 mm (head to bottom).

Distribution: India: Andaman & Nicobar Islands, Assam, Maharashtra and Tamil Nadu; *Elsewhere:* Borneo, China, Laos, Malaysia, Myanmar, Pakistan, Philippines (Mindanao, Luzon, Romblon, Sibuyan, Negros), Sri Lanka, Thailand and Vietnam.

Remark: First record from Nagaland.

Tribe: Callidiopini Lacordaire, 1868

11. *Ceresium zeylanicum* (White, 1855)

Material examined: District Zunheboto, Village Lumami (Regd. No. NU/ZOO/LB-09(1)/2014).

Antennae: 10 segments; Body length: 10 mm; Head: 4.5 mm.

Distribution: India: Assam and West Bengal; *Elsewhere:* Borneo, Laos, Myanmar, Philippines, Sri Lanka, Taiwan, Thailand and Vietnam.

Remark: First record from Nagaland.

Tribe: Hesperophanini Mulsant, 1839

12. *Stromatium longicorne* (Newman, 1842)

Material examined: District Zunheboto, Village Lumami (Regd. No. NU/ZOO/LB-03(1)/2015).

Antennae: 10 segments; Body length: 15 mm; Head: 12 mm.

Distribution: India: Assam and West Bengal; *Elsewhere:* Borneo, Cambodia, China, Japan, Laos, Malaysia, Myanmar, New Guinea, Philippines, Taiwan, Thailand and Vietnam.

Remark: First record from Nagaland.

Tribe: Xystrocerini Blanchard, 1845

13. *Oplatocera (Epiplatocera) oberthuri* (Gahan, 1906)

Material examined: District Zunheboto, Village Lumami (Regd. No. NU/ZOO/LB-04(1)/2015).

Antennae: 10 segments; Body length: 20 mm; Head: 10 mm.

Distribution: India: Sikkim and West Bengal (Darjeeling); *Elsewhere:* Borneo, Bhutan, China (Guangdong, Guangxi, Hunan, Shaanxi, Sichuan, Yunnan), Indonesia (Sumatra), Malaysia, Nepal, Philippines, Taiwan and Thailand.

Remark: First record from Nagaland.

14. *Xystrocera festiva* (Thomson, 1860)

Material examined: District Zunheboto, Village Lumami (Regd. No. NU/ZOO/LB-01(1)/2016).

Antennae: 10 segments; Body length: 26 mm; Head: 8 mm.

Distribution: India: Assam, Arunachal Pradesh, Meghalaya and Sikkim; *Elsewhere:* Borneo, China (Hainan, Yunnan), Indonesia (Java, Sumatra), Laos, Malaysia, Myanmar, Thailand and Vietnam.

Remark: First record from Nagaland.

15. *Xystrocera globosa* (Olivier, 1795)

Material examined: District Zunheboto, Village Lumami (Regd. No. NU/ZOO/LB-01(1)/2019).

Antennae: 10 segments; Body length: 11 mm; Head: 8 mm.

Distribution: India: Assam, Arunachal Pradesh, Gujarat, Karnataka, Maharashtra, Manipur, Madhya Pradesh, Mizoram, Tamil Nadu, Tripura and West Bengal (Darjeeling); *Elsewhere:* Australia, China, Comoros, Egypt, Korea, Hawaii, Indonesia (Java, Sulawesi, Sumatra, Timor), Israel, Laos, Malaysia, Madagascar, Marquesas, Mauritius, Myanmar, Nepal, New Caledonia, New Guinea, Pakistan, Philippines, Sri Lanka, Tahiti, Thailand, Taiwan and Vietnam.

Remark: First record from Nagaland.

Subfamily: Lamiinae Latreille, 1825

Tribe: Agapanthiini Mulstant, 1839

16. *Pothyne multivittipennis* (Breuning, 1950)

Material examined: District Zunheboto, Village Lumami (Regd. No. NU/ZOO/LB-10(1)/2014).

Antennae: 10 segments; Body length: 13 mm; Head: 5 mm.

Distribution: India: Central India and Tamil Nadu; *Elsewhere:* Data deficient.

Remark: First record from Nagaland.

Tribe: Batocerini Thomson, 1864

17. *Apriona germari* (Hope, 1831)

Material examined: District Zunheboto, Village Lumami (Regd. No. NU/ZOO/LB-12(1)/2014).

Antennae: 10 segments; Body length: 40 mm; Head: 10 mm.

Distribution: India: Arunachal Pradesh, Assam, Manipur, Meghalaya, Nagaland, Sikkim and Uttar Pradesh; *Elsewhere:* Bangladesh, Bhutan, Cambodia, China, Japan, Korea, Laos, Myanmar, Nepal, Pakistan, Sri Lanka, Taiwan and Vietnam.

Remark: Reported in Behere *et al.*, 2019.

18. *Batocera rubus* (Linnaeus, 1758)

Material examined: District Zunheboto, Village Lumami (Regd. No. NU/ZOO/EI/LB-58(1)/2015).

Antennae: 10 segments; Body length: 31 mm; Head: 12 mm.

Distribution: India: Arunachal Pradesh, Assam, Gujarat, Meghalaya, Nagaland and Tamil Nadu; *Elsewhere:* Africa, Borneo, China, France, Indonesia (Java, Sumatra), Japan (Ryukyu: Okinawa), Korea, Laos, Malaysia, Myanmar, Philippines, Sri Lanka, Taiwan, Thailand and Vietnam.

Remark: Reported in Mozhui *et al.*, 2017.

19. *Batocera lineolata* (Chevrolat, 1852)

Material examined: District Zunheboto, Village Lumami (Regd. No. NU/ZOO/LB-11(3)/2014).

Antennae: 10 segments; Body length: 40 mm; Head: 15 mm.

Distribution: India: Assam, Meghalaya, Nagaland and Sikkim; *Elsewhere:* China, Japan, Korea, Myanmar and Taiwan.

Remark: Reported in Behere *et al.*, 2019.

20. *Batocera parryi* (Hope, 1845)

Material examined: District Zunheboto, Village Lumami (Regd. No. NU/ZOO/EI/LB-57(1)/2015).

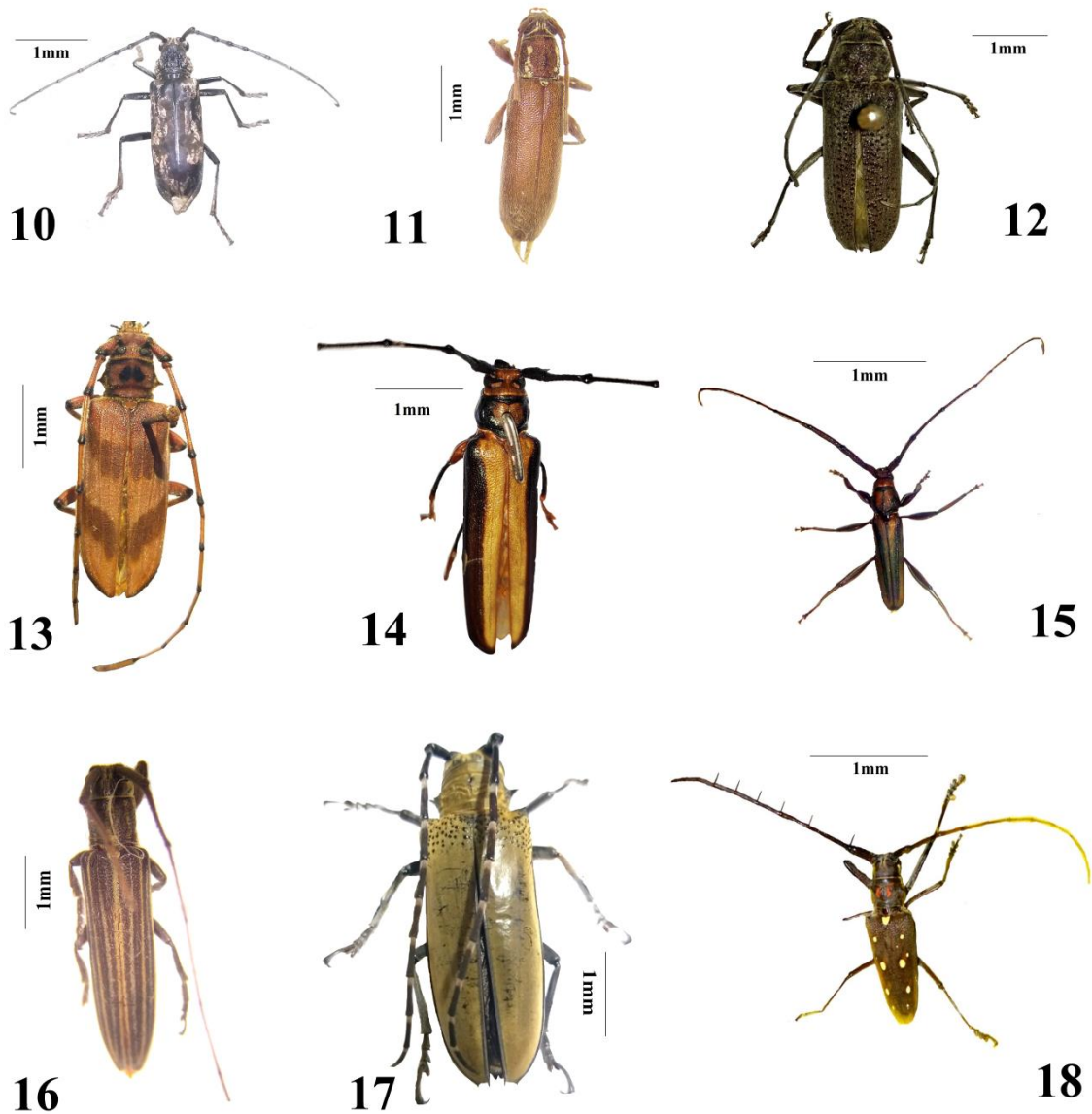
Antennae: 10 segments; Body length: 30 mm; Head: 10 mm.

Distribution: India: Arunachal Pradesh, Assam, Meghalaya, Nagaland, Sikkim and Tamil Nadu; *Elsewhere:* Borneo, China,

A checklist of long horn beetles of Lumami, Zunheboto District, Nagaland

Indonesia (Java, Sumatra), Laos, Myanmar, Taiwan and Vietnam.

Remark: Reported in Mozhui *et al.*, 2017.



Figures 10-18: Long horn beetles of Lumami, Nagaland: **10.** *Trirachys indutus*; **11.** *Ceresium zeylanicum*; **12.** *Stromatium longicorne*; **13.** *Oplatocera (Epioplatocera) oberthuri*; **14.** *Xystrocera festiva*; **15.** *Xystrocera globosa*; **16.** *Pothyne multivittipennis*; **17.** *Apriona germari*; **18.** *Batocera rubus*.

Tribe: Ceroplesini Thomson, 1860

21. *Thysia wallichii* (Hope, 1831)

Material examined: District Zunheboto, Village Lumami (Regd. No. NU/ZOO/LB-05(1)/2015).

Antennae: 10 segments; Body length: 23 mm; Head: 10 mm.

Distribution: India: Arunachal Pradesh, Assam, Bihar, Meghalaya, Nagaland, Sikkim, Uttarakhand, Uttar Pradesh and West Bengal; *Elsewhere:* Borneo, China (Guangdong, Guangxi, Guizhou, Sichuan, Yunnan), Iran,

Laos, Malaysia, Myanmar, Nepal, Pakistan, Thailand and Vietnam.

Remark: Reported in Mitra *et al.*, 2016a, 2017.

Tribe: Eunidiini Téocchi *et al.*, 2010

22. *Eunidia lateralis* (Gahan, 1893)

Material examined: District Zunheboto, Village Lumami (Regd. No. NU/ZOO/LB-06(2)/2015).

Antennae: 10 segments; Body length: 6 mm; Head: 3 mm.

Distribution: India: Nagaland, South India (Tamil Nadu); *Elsewhere:* Cambodia, China (Hainan, Yunnan), Nepal, South Korea, Thailand and Vietnam.

Remark: Reported in Behere *et al.*, 2019.

Tribe: Lamiini Latreille, 1825

23. *Anoplophora stanleyana* (Hope, 1839)

Material examined: District Zunheboto, Village Lumami (Regd. No. NU/ZOO/EI/LB-56(1)/2015).

Antennae: 10 segments; Body length: 21 mm; Head: 9 mm.

Distribution: India: Assam and Sikkim; *Elsewhere:* China, Laos, Myanmar and Thailand.

Remark: First record from Nagaland.

Tribe: Mesosini Mulsant, 1839

24. *Coptops leucostictica* (White, 1858)

Material examined: District Zunheboto, Village Lumami (Regd. No. NU/ZOO/LB-07(1)/2015).

Antennae: 10 segments; Body length: 15 mm; Head: 7 mm.

Distribution: India: Arunachal Pradesh, Assam, Mizoram, Nagaland, Sikkim and West Bengal (Darjeeling); *Elsewhere:* Cambodia, China, Indonesia, Laos, Malaysia, Myanmar, Thailand and Vietnam.

Remark: Reported in Mitral *et al.*, 2016a, 2017.

25. *Mesosa (Perimesosa) binigrovittipennis* (Breuning, 1968)

Material examined: District Zunheboto, Village Lumami (Regd. No. NU/ZOO/LB-08(1)/2015).

Antennae: 8 segments; Body length: 12 mm; Head: 5 mm.

Distribution: India: Arunachal Pradesh, Sikkim and West Bengal (Darjeeling); *Elsewhere:* Bhutan and Vietnam.

Remark: First record from Nagaland.

Tribe Monochamini Gistel, 1856

26. *Aristobia reticulator* (Fabricius, 1781)

Material examined: District Zunheboto, Village Lumami (Regd. No. NU/ZOO/LB-02(1)/2016).

Antennae: 10 segments; Body length: 20 mm; Head: 7 mm.

Distribution: India: Arunachal Pradesh, Assam, Manipur, Meghalaya, Mizoram, Nagaland, Sikkim and Tripura; *Elsewhere:*

Bangladesh, China, Laos, Myanmar, Nepal, Thailand and Vietnam.

Remark: Reported in Mitral *et al.*, 2016a, 2017; Behere *et al.*, 2019.

27. *Blepephaeus succinator* (Chevrolat, 1852)

Material examined: District Zunheboto, Village Lumami (Regd. No. NU/ZOO/LB-09(1)/2015).

Antennae: 10 segments; Body length: 17 mm; Head: 7 mm.

Distribution: India: Assam and West Bengal; *Elsewhere:* Bangladesh, China, Laos, Malaysia, Myanmar, Nepal, Taiwan, Thailand and Vietnam.

Remark: First record from Nagaland.

28. *Epepeotes uncinatus* (Gahan, 1888)

Material examined: District Zunheboto, Village Lumami (Regd. No. NU/ZOO/LB-10(2)/2015).

Antennae: 10 segments; Body length: 20 mm; Head: 10 mm.

Distribution: India: Arunachal Pradesh, Karnataka, Kerala and West Bengal; *Elsewhere:* Bhutan, China, Laos, Myanmar, Nepal, Sri Lanka and Vietnam.

Remark: First record from Nagaland.

29. *Monochamus bimaculatus* (Gahan, 1888)

Material examined: District Zunheboto, Village Lumami (Regd. No. NU/ZOO/LB-13(1)/2014).

Antennae: 10 segments; Body length: 10 mm; Head: 4 mm.

Distribution: India: Arunachal Pradesh, Uttar Pradesh, Sikkim and West Bengal; *Elsewhere:* China, Laos, Malaysia, Myanmar, Nepal, Taiwan, Thailand and Vietnam.

Remark: First record from Nagaland.

30. *Pseudonemophas versteegii* (Ritsema, 1881)

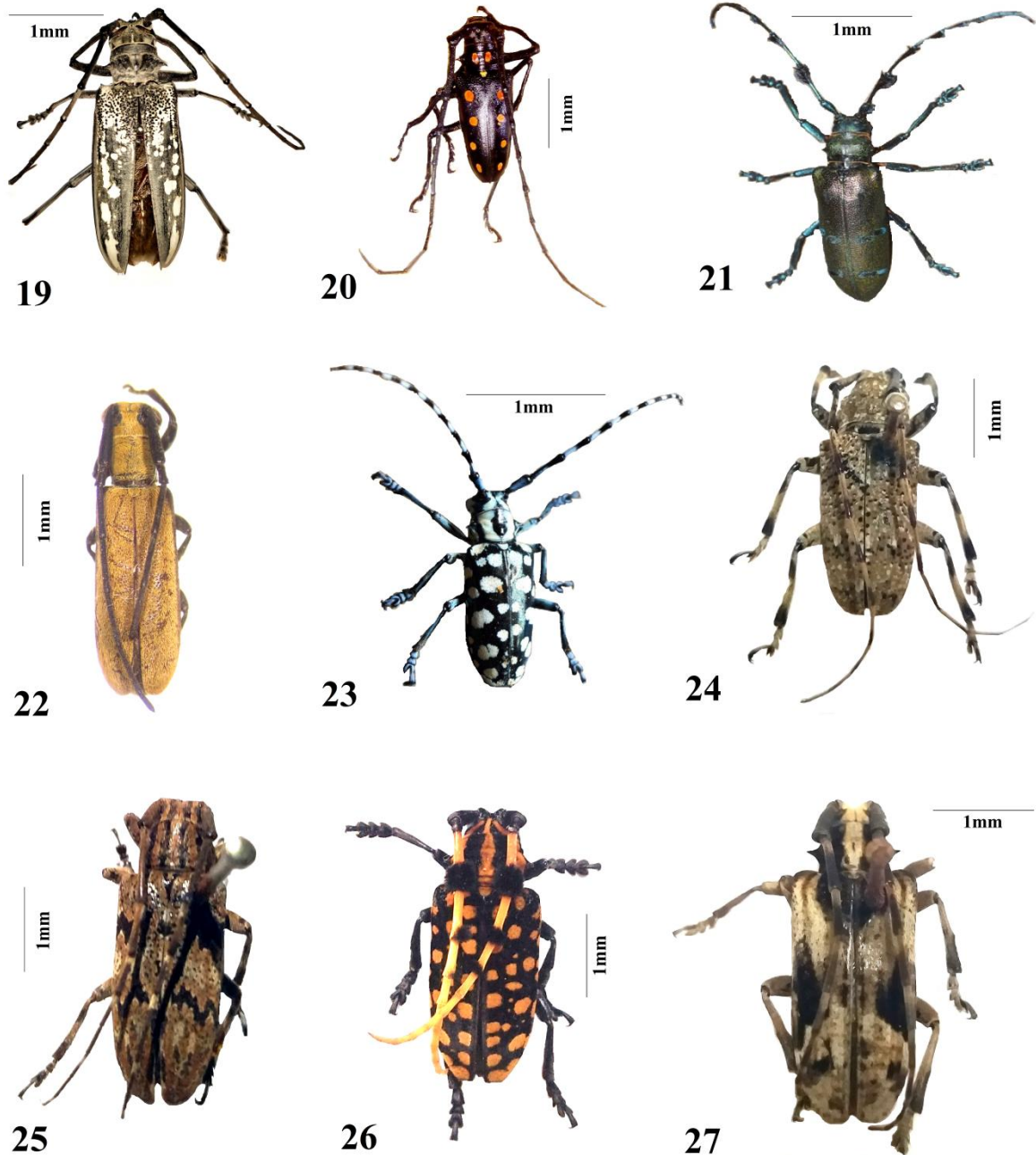
Material examined: District Zunheboto, Village Lumami (Regd. No. NU/ZOO/LB-01(2)/2017/2020).

Antennae: 11 segments; Body length: 22 mm; Head: 10 mm.

Distribution: India: Arunachal Pradesh, Assam, Mizoram, Nagaland, Sikkim and West Bengal; *Elsewhere:* Laos, Myanmar, Nepal, Subtropical China, Indonesia (Sumatra), Taiwan, Thailand and Vietnam.

Remark: Reported in Mitral *et al.*, 2017; Behere *et al.*, 2019.

A checklist of long horn beetles of Lumami, Zunheboto District, Nagaland



Figures 19-27: Long horn beetles of Lumami, Nagaland: **19.** *Batocera lineolata*; **20.** *Batocera parryi*; **21.** *Thysia wallichii*; **22.** *Eunidia lateralis*; **23.** *Anoplophora stanleyana*; **24.** *Coptops leucostictica*; **25.** *Mesosa (Primesosa) binigrovittipennis*; **26.** *Aristobia reticulator*; **27.** *Blepephaeus succintor*.

Tribe: Petrognathini Blanchard, 1845

31. *Ithocritus ruber* (Hope, 1839)

Material examined: District Zunheboto, Village Lumami (Regd. No. NU/ZOO/LB-04(2)/2016).

Antennae: 10 segments; Body length: 20 mm; Head: 10 mm.

Distribution: India: Assam, Meghalaya and Sikkim; *Elsewhere:* Bangladesh, Myanmar and Vietnam.

Remark: First record from Nagaland.

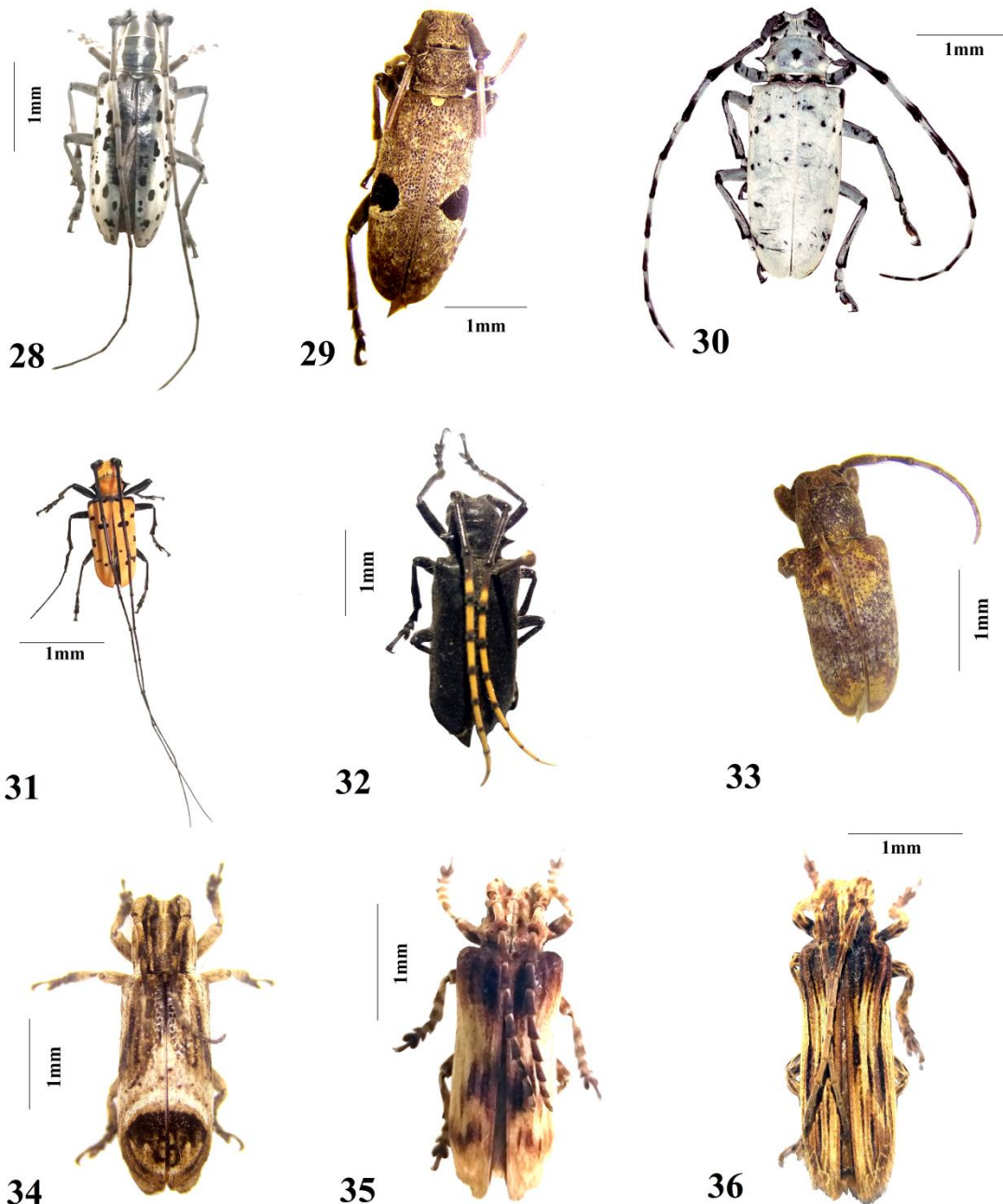
32. *Pseudapriona flavoantennata* (Breuning, 1936)

Material examined: District Zunheboto, Village Lumami (Regd. No. NU/ZOO/LB-03(1)/2016).

Antennae: 10 segments; Body length: 20 mm; Head: 7 mm.

Distribution: India: Arunachal Pradesh, Himalayan India, Meghalaya, Nagaland and Peninsular India; *Elsewhere:* Myanmar and Tibet.

Remark: Reported in Mitral *et al.*, 2017.



Figures 28-36: Long horn beetles of Lumami, Nagaland: **28.** *Epepeotes unicus*; **29.** *Monochamus bimaculatus*; **30.** *Pseudonemophas versteegii*; **31.** *Ithocritus ruber*; **32.** *Pseudapriona flavoantennata*; **33.** *Pterolophia multifasciculata*; **34.** *Sthenias franciscana*; **35.** *Thylactus simulans*; **36.** *Xylorhiza adusta*.

Tribe: Pteropliini, Thomson, 1860

33. *Pterolophia multifasciculata* (Pic, 1926)

Material examined: District Zunheboto, Village Lumami (Regd. No. NU/ZOO/LB-11(1)/2015).

Antennae: 10 segments; Body length: 8 mm; Head: 3 mm.

Distribution: India: Data deficient; *Elsewhere:* Cambodia, China, Thailand and Vietnam.

Remark: First record from Nagaland.

34. *Sthenias franciscana* (Thomson, 1865)

Material examined: District Zunheboto, Village Lumami (Regd. No. NU/ZOO/LB-05(1)/2016).

Antennae: 10 segments; Body length: 12 mm; Head: 5 mm.

Distribution: India: Sikkim; *Elsewhere:* Indonesia, Malaysia and Thailand.

Remark: First record from Nagaland.

Tribe: Xylorhizini Lacordaire, 1872

35. *Thylactus simulans* (Gahan, 1890)

Material examined: District Zunheboto, Village Lumami (Regd. No. NU/ZOO/LB-02(3)/2017).

Antennae: 10 segments; Body length: 22 mm; Head: 6 mm.

Distribution: India: Arunachal Pradesh, Sikkim and West Bengal (Darjeeling); *Elsewhere:* China, Laos, Myanmar, Thailand and Vietnam.

Remark: First record from Nagaland.

36. *Xylorhiza adusta* (Wiedemann, 1819)

Material examined: District Zunheboto, Village Lumami (Regd. No. NU/ZOO/LB-03(2)/2017).

Antennae: 10 segments; Body length: 25 mm; Head: 10 mm.

Distribution: India: Arunachal Pradesh, Meghalaya, Sikkim and West Bengal; *Elsewhere:* Borneo, Cambodia, China, Indonesia (Sumatra), Laos, Malaysia, Myanmar, Nepal, Philippines, Sri Lanka, Thailand and Vietnam.

Remark: First record from Nagaland.

Discussions

A total of 36 long horn beetles were recorded from Lumami, of which 23 species were found to be new record to the state of Nagaland. Of these, the subfamily Lamiinae recorded the maximum number with 21 species, followed by Cerambycinae with a total of 8 species and Prioninae with a total of 7 species. Characterized by the typical presence of long antennae (varies among species), short legs and a flat face, Prioninae, Cerambycinae and Lamiinae are three much diversified subfamily comprising many genera showing variations in sizes and colours. They are serious pests causing extreme damages to trees especially on the trunk portion of the body and are known to cause damages to untreated timber. However, even though they are considered as pest, larvae and pupae of some long horn beetles for e.g., *Batocera rubus* and *Batocera parryi* are considered as delicacies by the different ethnic groups in Nagaland (Mozhui *et al.*, 2017). Depending on the species, the long horn beetles are found throughout the year. For instance, *Pseudonemophas versteegii* were collected mostly in the month of May, *Thylactus simulans* mostly in the month of June while *Trirachys indutus* were mostly collected in the

month of February. The present study led to the firm belief that the region is rich with Cerambycidae diversity and further extensive research and intensive sampling, may lead to even more discoveries of both little known and unknown taxa under this group.

Funding: This research received no external funding.

Conflict of Interest: The authors declare no conflict of interest.

References

- Agarwala, B.K. and Bhattacharjee, P.P. 2012. Long-horned beetles (Coleoptera: Cerambycidae) and tortoise beetles (Chrysomelidae: Cassidinae) of Tripura, northeastern India with some new additions. *Journal of Threatened Taxa* 4(13): 3223-3227.
- Anonymous. 2005. Fauna of Nagaland, State Fauna Series 12. Kolkata: Zoological Survey of India. 620pp.
- Beeson, C.F.C. and Bhatia, B.M. 1939. On the biology of the Cerambycidae (Coleoptera). *Indian Forest Records* 5(1): 1-235.
- Behere, G.T., Firake, D.M. and Burange, P.S. 2019. An inventory (Database): Long horn beetles of North-eastern and Western Himalaya. <http://www.kiran.nic.in/>.56p.
- Breuning, S. 1964. Revision der Apomecynini der asiatisch-australischen Region. *Entomologische Abhandlungen Museum für Tierkunde in Dresden* 30: 528.
- Chandra, K., Biswas, B. and Kushwaha, S. 2015. Diversity of Pyrrhocoroidea (Hemiptera: Heteroptera) of Madhya Pradesh, India. *Munis Entomology & Zoology* 10(1): 169-171.
- Cherepanov, A.I. 1990. Cerambycidae of Northern Asia Vol. 3. Lamiinae Part 1. New Delhi: Amerind Publishing Co. Pvt. Ltd. 300 pp.
- Gahan, C.J. 1906. The Fauna of British India including Ceylon and Burma. Coleoptera 1. Cerambycidae. London: Taylor and Francis. 329 pp.
- Kariyanna, B., Mohan, M., Gupta, R. and Vitali, F. 2017. The checklist of longhorn beetles (Coleoptera: Cerambycidae) from India. *Zootaxa* 4345(1): 001-317.
- Komiya, Z. and Drumont, A. 2010. A revision of the genus *Nepiodes* (Coleoptera,

- Cerambycidae, Prioninae) (Revisional studies of the genus *Megopsis* sensu LAMEERE, 1909-10). *Elytra*, Tokyo 38(2): 169-192.
- Mitra, B., Bhaumik, S., Chakraborti, U. and Mallick, K. 2017. An update on the diversity, distribution and zoogeographical notes on Longhorn Beetles (Cerambycidae: Coleoptera) of North-East India. *Biological Forum- an International Journal* 9(2): 61-80.
- Mitra, B., Das, P., Chakraborti, U. and Mallick, K. 2016a. Long horn beetles (Cerambycidae: Coleoptera) of Nagaland, India. *Journal of Global Biosciences* 5(4): 3963-3969.
- Mitra, B., Das, P., Chakraborti, U., Mallick, K. and Majumder, A. 2016b. Long horn beetles (Cerambycidae: Coleoptera) of Meghalaya with eight new records. *The Journal of Zoology Studies* 3(4): 39-47.
- Mitra, B., Das, P., Chakraborti, U., Mallick, K. and Majumder, A. 2016c. New records of long horn beetles (Cerambycidae: Coleoptera) from Manipur state with checklist. *The Journal of Zoology Studies* 3(1): 19-26.
- Monne, M.L., Monne, M.A. and Wang, Q. 2017. General morphology, classification and biology of Cerambycidae. *In: Q. Wang (ed.) Cerambycidae of the world: biology and pest management*, Boca Raton, FL: CRC Press. 76pp.
- Mozhui, L., Kakati, L.N. and Changkija, S. 2017. A study on the use of insects as food in seven tribal communities in Nagaland, Northeast India. *Journal of Human Ecology* 60(1): 42-53.
- Mukhopadhyay, P. and Biswas, S. 2000a. Coleoptera: Cerambycidae. *In: Director, Zoological Survey of India (eds.) State Fauna Series 4, Fauna of Meghalaya Part 5, Zoological Survey of India*, 41-67.
- Mukhopadhyay, P. and Biswas, S. 2000b. Coleoptera: Cerambycidae. *In: Director, Zoological Survey of India (eds.) State Fauna Series 7, Fauna of Tripura Part 3, Zoological Survey of India*, 139-142.
- Mukhopadhyay, P. and Halder, S.K. 2004. Insecta: Coleoptera: Cerambycidae. *In: Director, Zoological Survey of India (eds.) State Fauna Series 10, Fauna of Manipur Part 2, Zoological Survey of India*, 421-431.
- Shylesha, A.N., Thakur, N.S.A. and Ramchandra. 2000. Incidence of litchi trunk borer, *Aristobia testudo* Voet (Coleoptera: Lamiidae) on guava in Meghalaya. *Pest Management in Horticultural Ecosystems* 6(2): 156-157.