

Effects of violent video stimuli on gastric activity: Electrogastrography-based case study

N.B. Popović¹, N. Miljković¹,

G. Knežević², Lj. B. Lazarević³



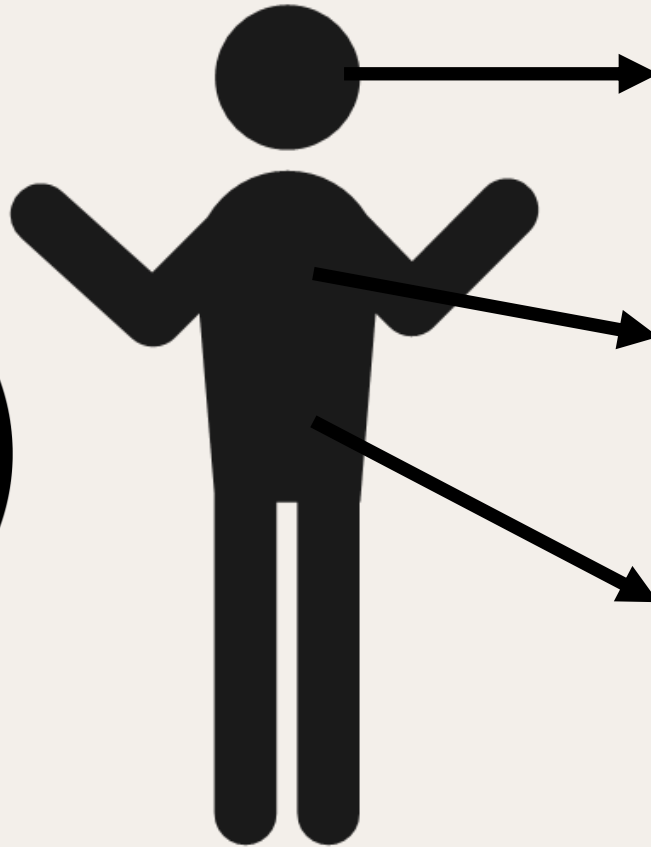
¹ University of Belgrade - School of Electrical Engineering

² Department of Psychology and Laboratory for research of individual differences, Faculty of Philosophy, University of Belgrade

³ Institute of Psychology and Laboratory for research of individual differences, Faculty of Philosophy, University of Belgrade

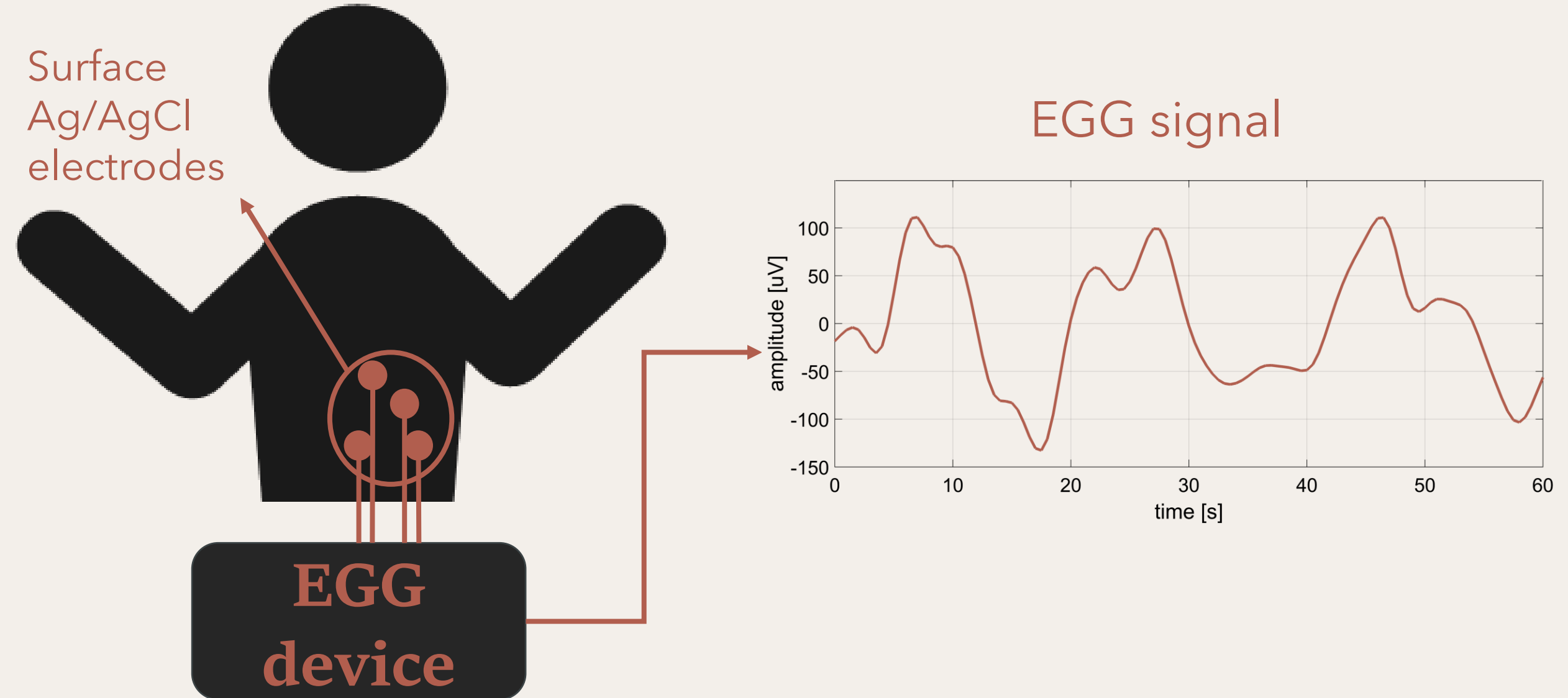
Introduction

emotional
arousal

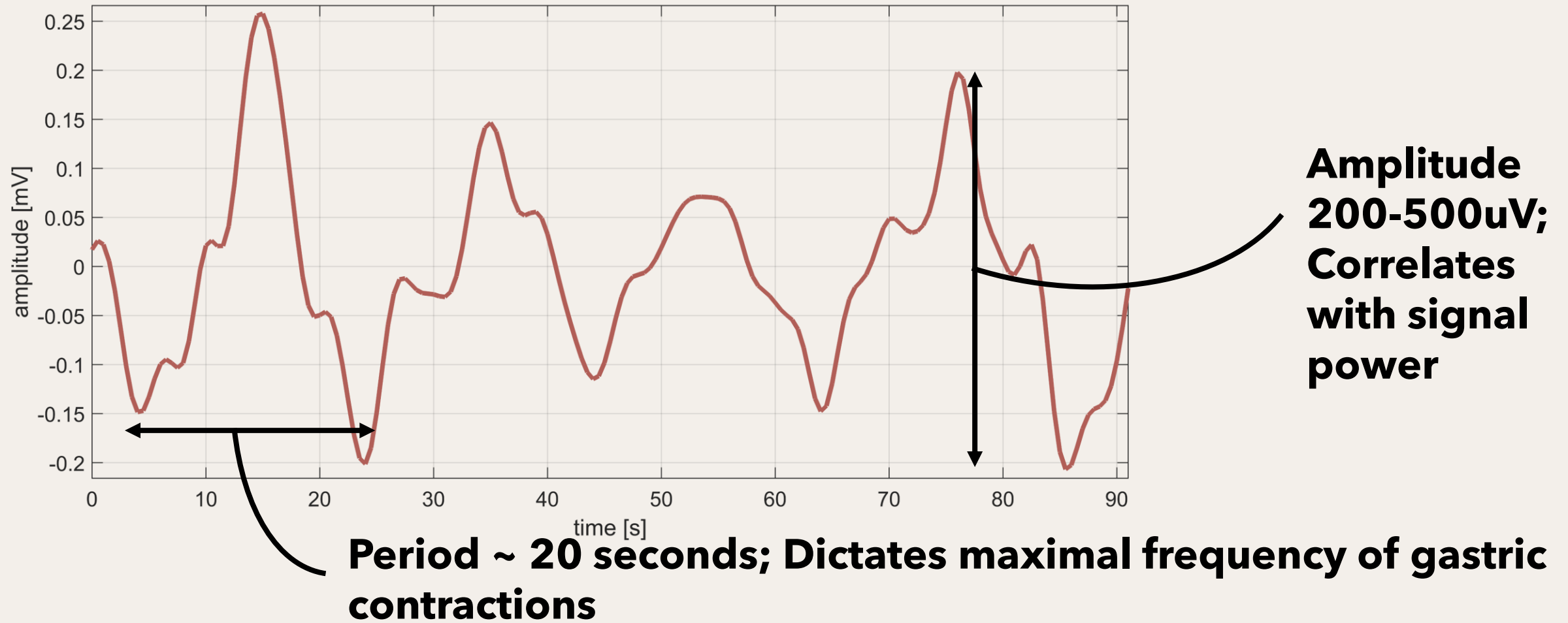


EGG

What is Electrogastrography?

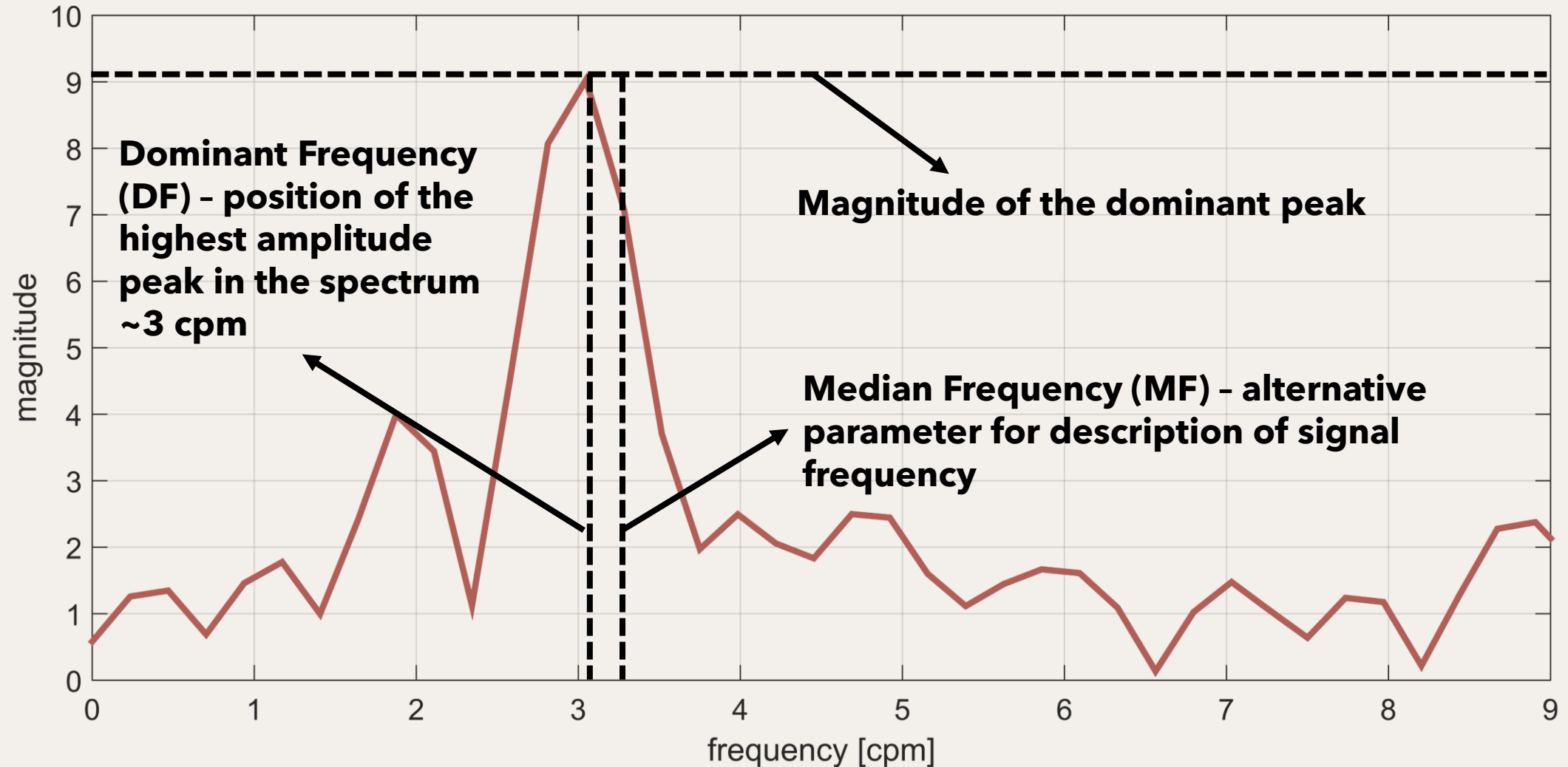


Interpretation of EGG signal from timeseries



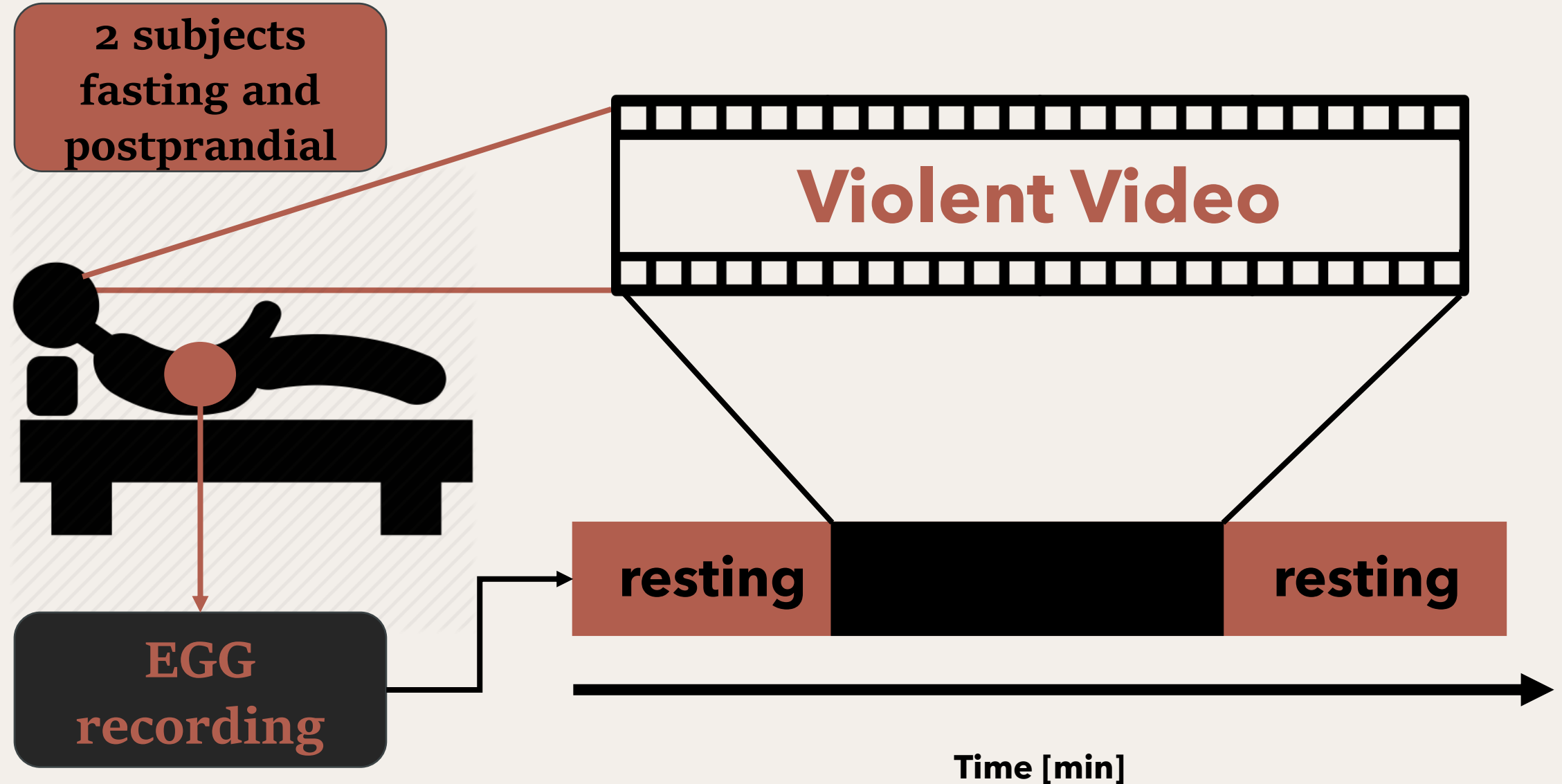
More parameters can be calculated from frequency spectrum

Interpretation of EGG signal from spectrum

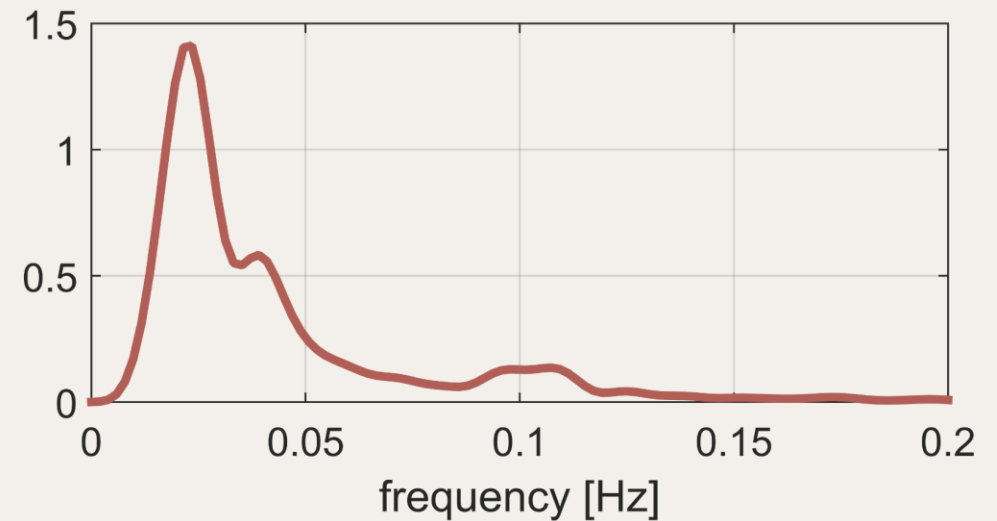
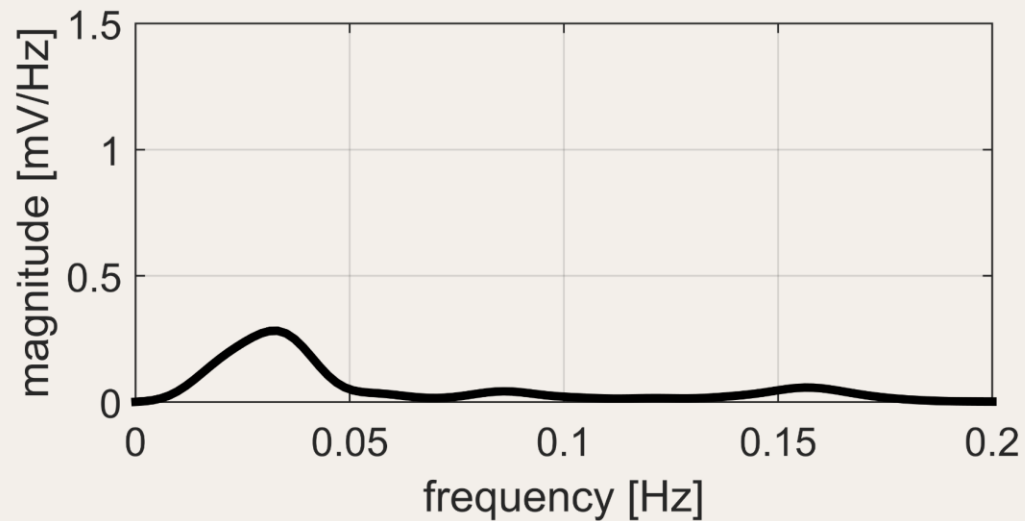
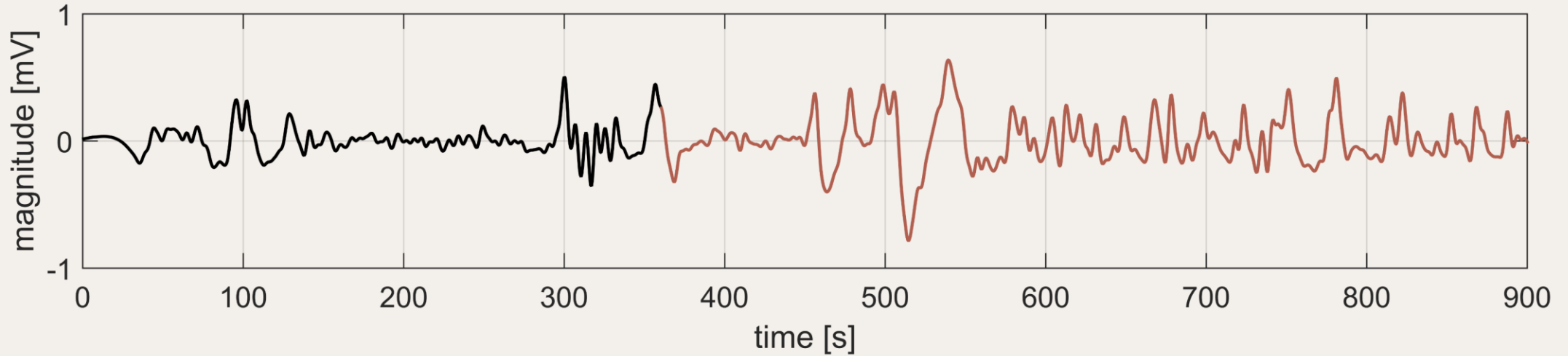


Crest Factor (CF) - Ratio between the magnitude of the dominant peak and spectrum RMS value; Correlates with peak prominence.

Experimental protocol

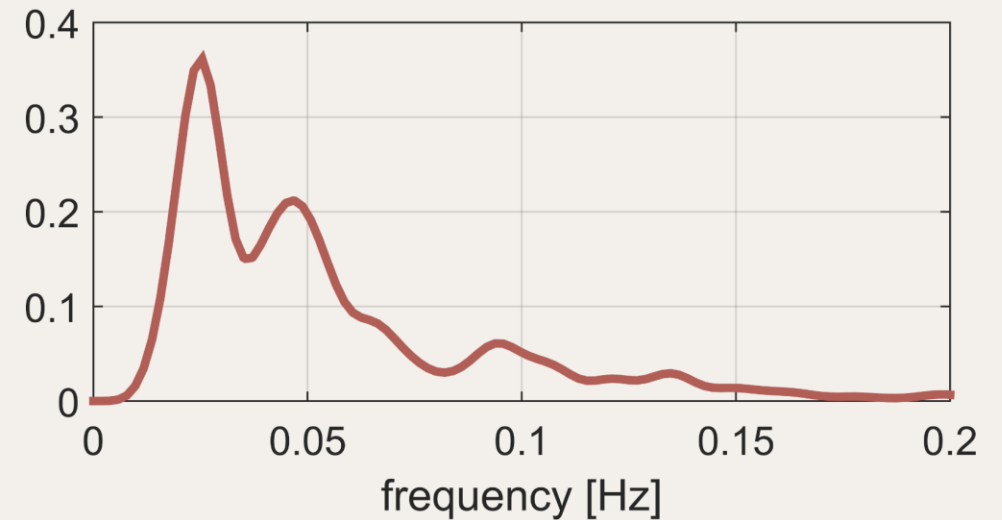
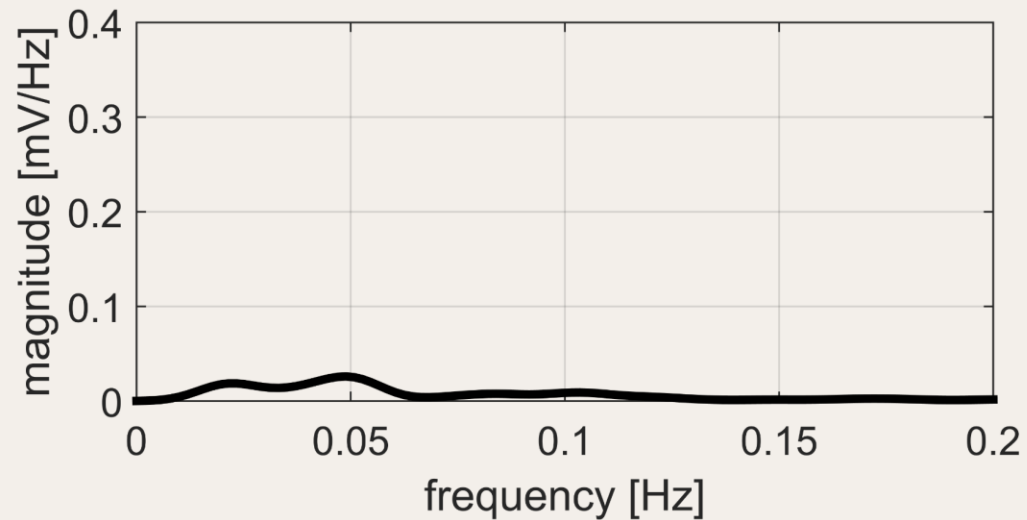
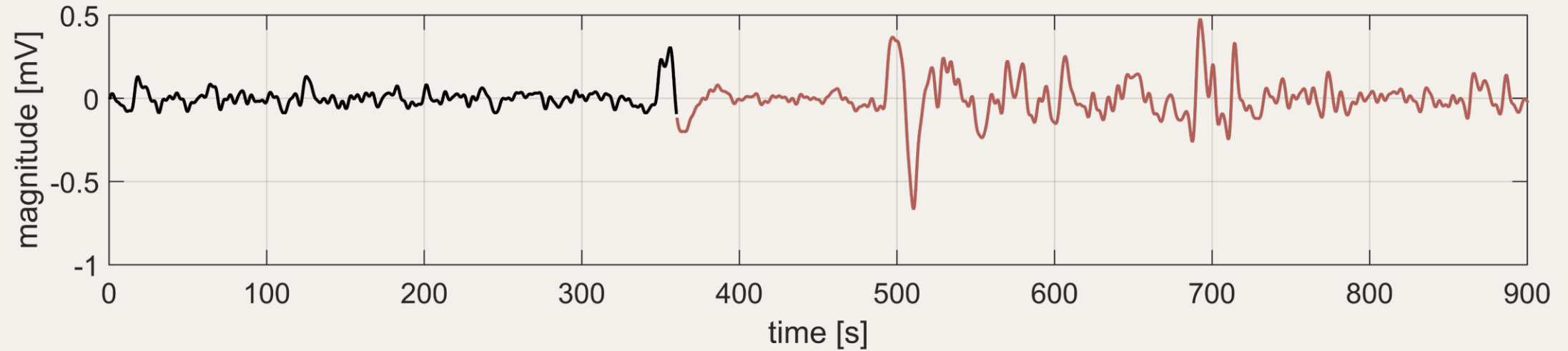


Visual observation – Subject ID1 fasting

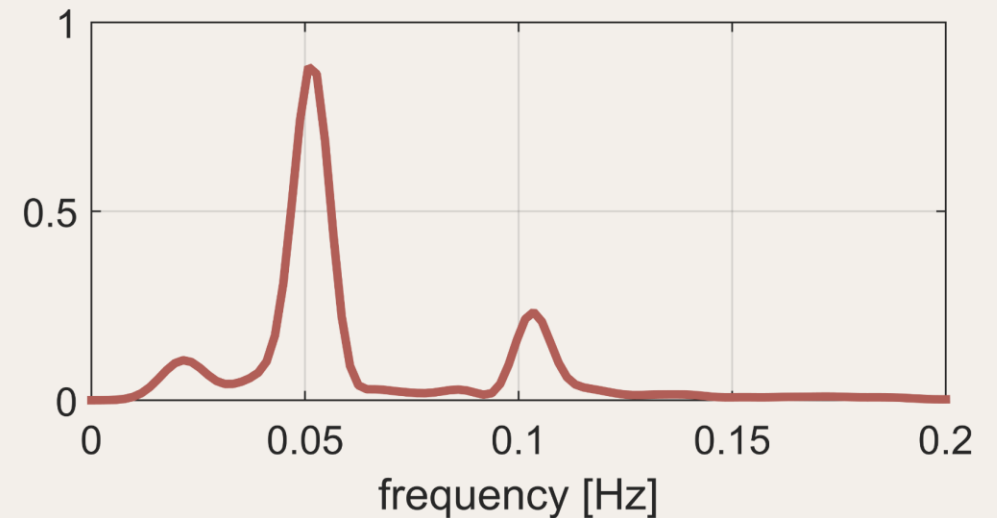
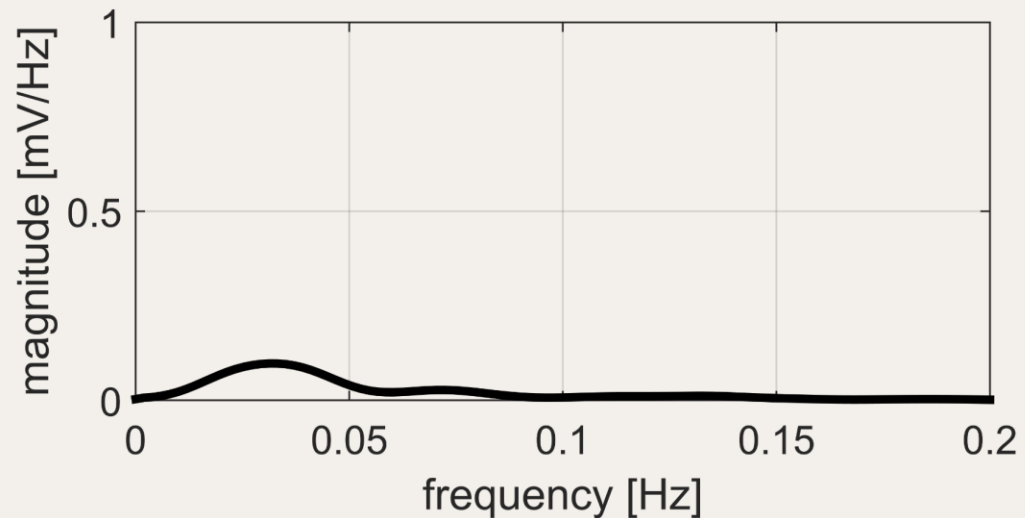
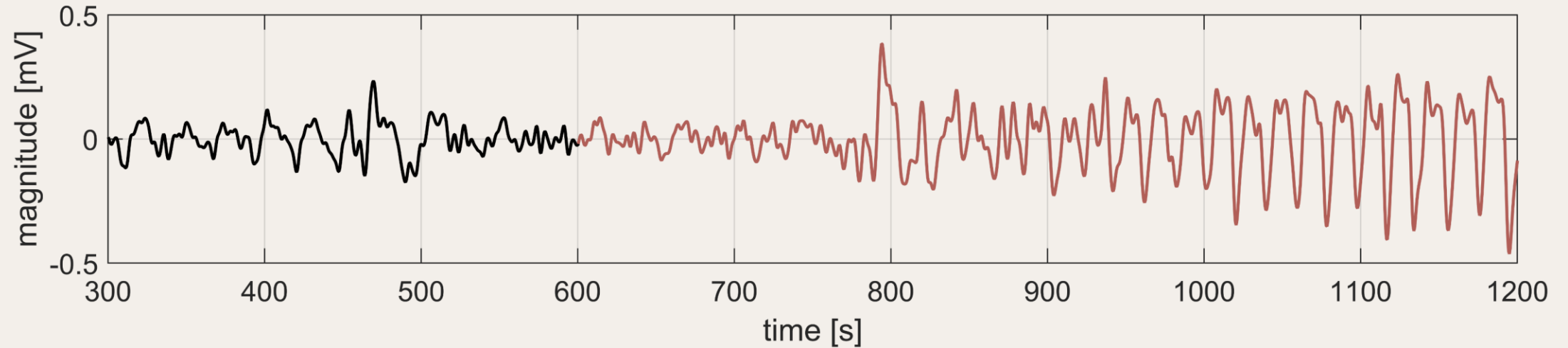


Visual observation – Subject ID1

postprandial

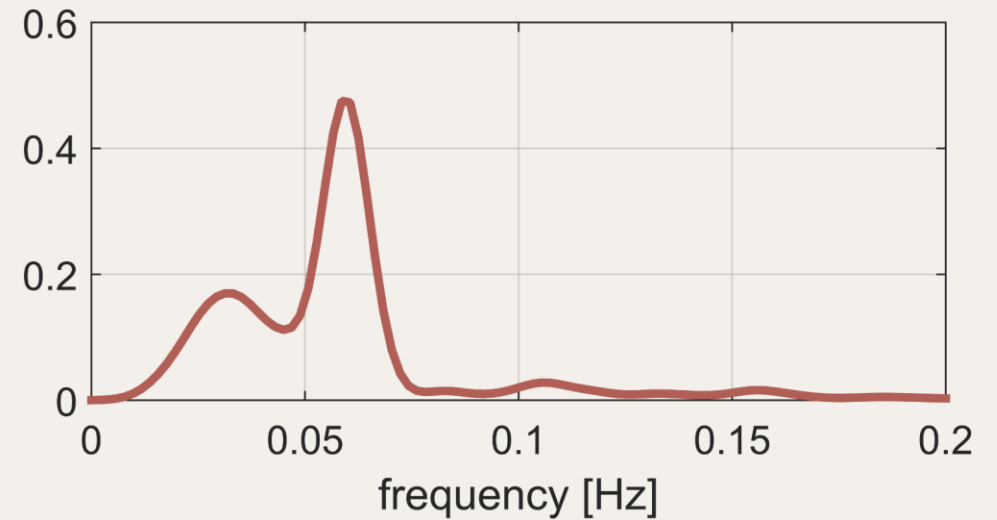
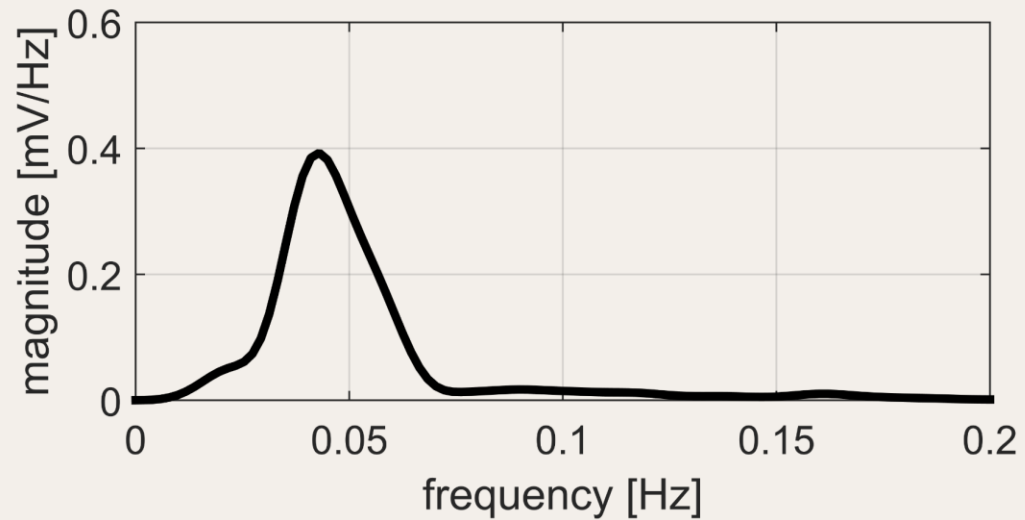
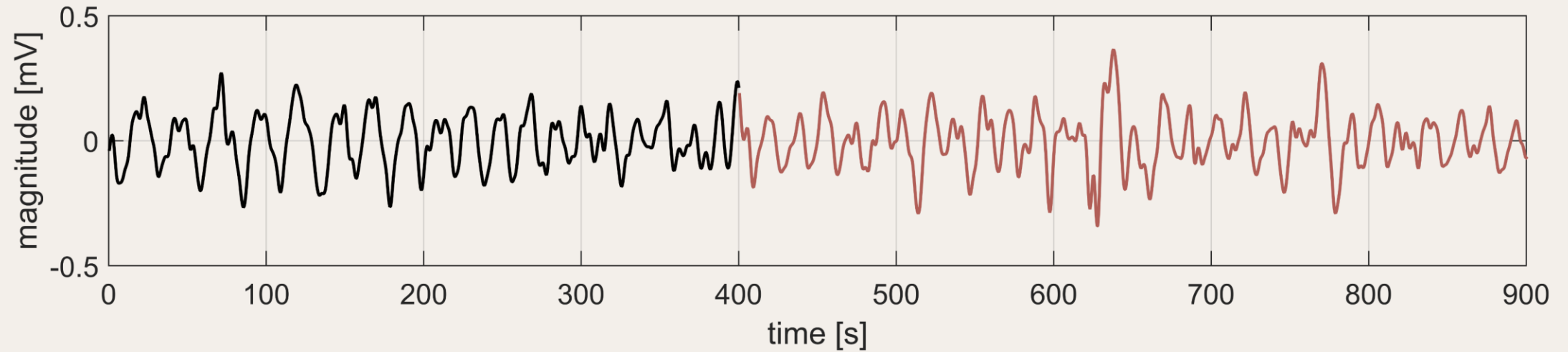


Visual observation – Subject ID2 fasting

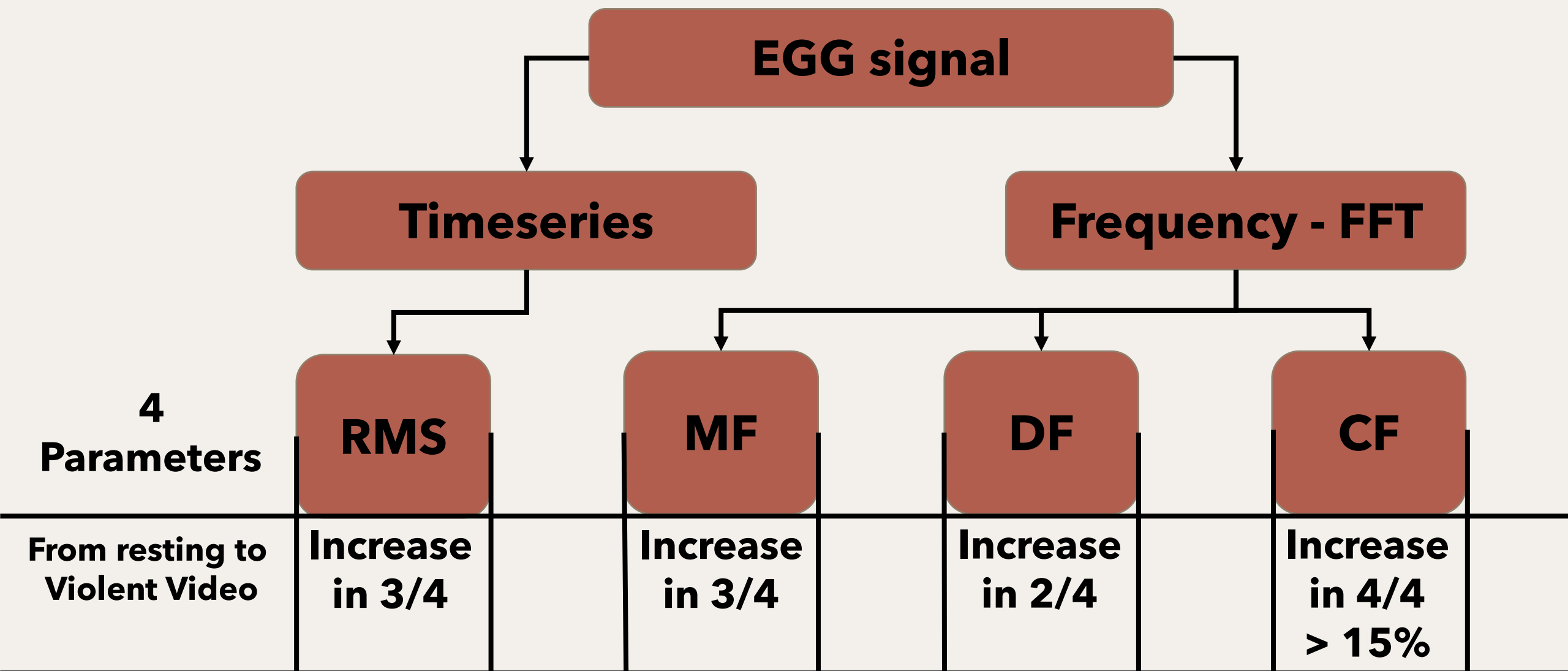


Visual observation – Subject ID2

postprandial



Quantitative results



Discussion

Is it better fasting or postprandial?

What parameters should be used?

Different videos -> Different results?

Will EGG response from violent video correlate with some psychological characteristics?

Effects of violent video stimuli on gastric activity: Electrogastrography-based case study

N.B. Popović¹, N. Miljković¹,

G. Knežević², Lj. B. Lazarević³



¹ University of Belgrade - School of Electrical Engineering

² Department of Psychology and Laboratory for research of individual differences, Faculty of Philosophy, University of Belgrade

³ Institute of Psychology and Laboratory for research of individual differences, Faculty of Philosophy, University of Belgrade