

Global Researcher Attitudes to Societal Impact: SDG8: DECENT WORK AND ECONOMIC GROWTH



These findings are part of a **GLOBAL SURVEY** of more than **9,000** researchers. Over **500** researchers identified SDG8 as one of the Sustainable Development Goals (SDGs) related to their research.

Researchers who identified **DECENT WORK AND ECONOMIC GROWTH** as relevant to their research most often said that **QUALITY EDUCATION (59%)** and **GOOD HEALTH AND WELL-BEING (56%)** were related to their work as well.

THE IMPORTANCE OF SOCIETAL IMPACT TO RESEARCHERS

76% of researchers who identify SDG8 as related to their research describe **societal impact** as either **extremely or very important**.

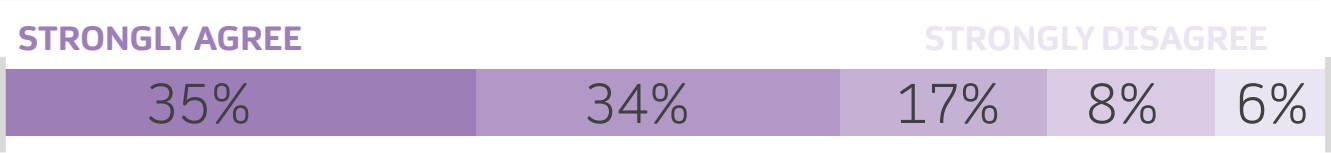


WHICH OF THE FOLLOWING TYPES OF IMPACT DO YOU HOPE THAT YOUR MOST RECENT PUBLICATION WILL HAVE?



THE FUTURE OF RESEARCH FUNDING

The majority of researchers believe that the funding of research should be more strongly linked to demonstrable societal impact.



I believe that societal impact is the most important trend in business, with a true potential to improve relationships and communities and reducing poverty and helping to solve social problems.

As the world is becoming populated and life becomes harder day by day, research should be helpful for the human kind and the world itself.

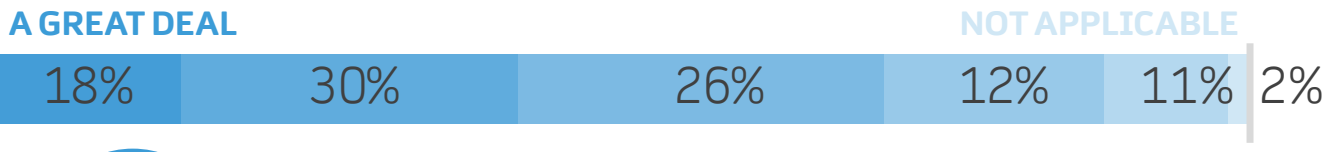
WHILE SOME DISAGREE →

Societal impact is too hard to predict, and by demanding it, it will kill fundamental research and innovation.

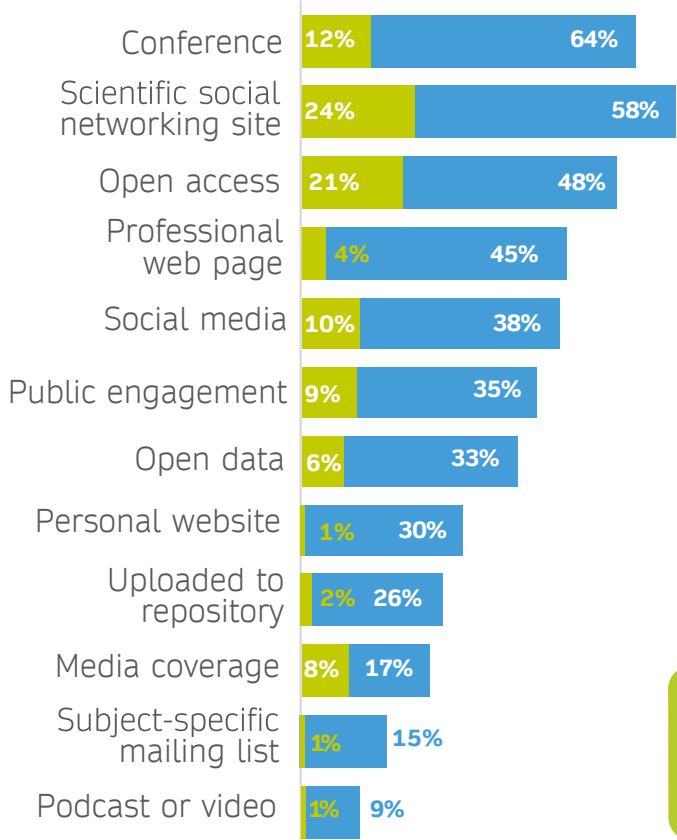
We need to ask and answer questions that may not at this time be socially relevant. Some of them may be relevant later.

COMMUNICATING RESEARCH

48% of researchers say their choice of journal was influenced 'a great deal' or 'a lot' by the intended societal impact of their research.



Presenting at a conference is the most popular way SDG8 researchers increase their societal impact.



But more researchers consider **scientific social networking sites to have the greatest impact**

Scientific social networking sites are a huge part of the academic world.

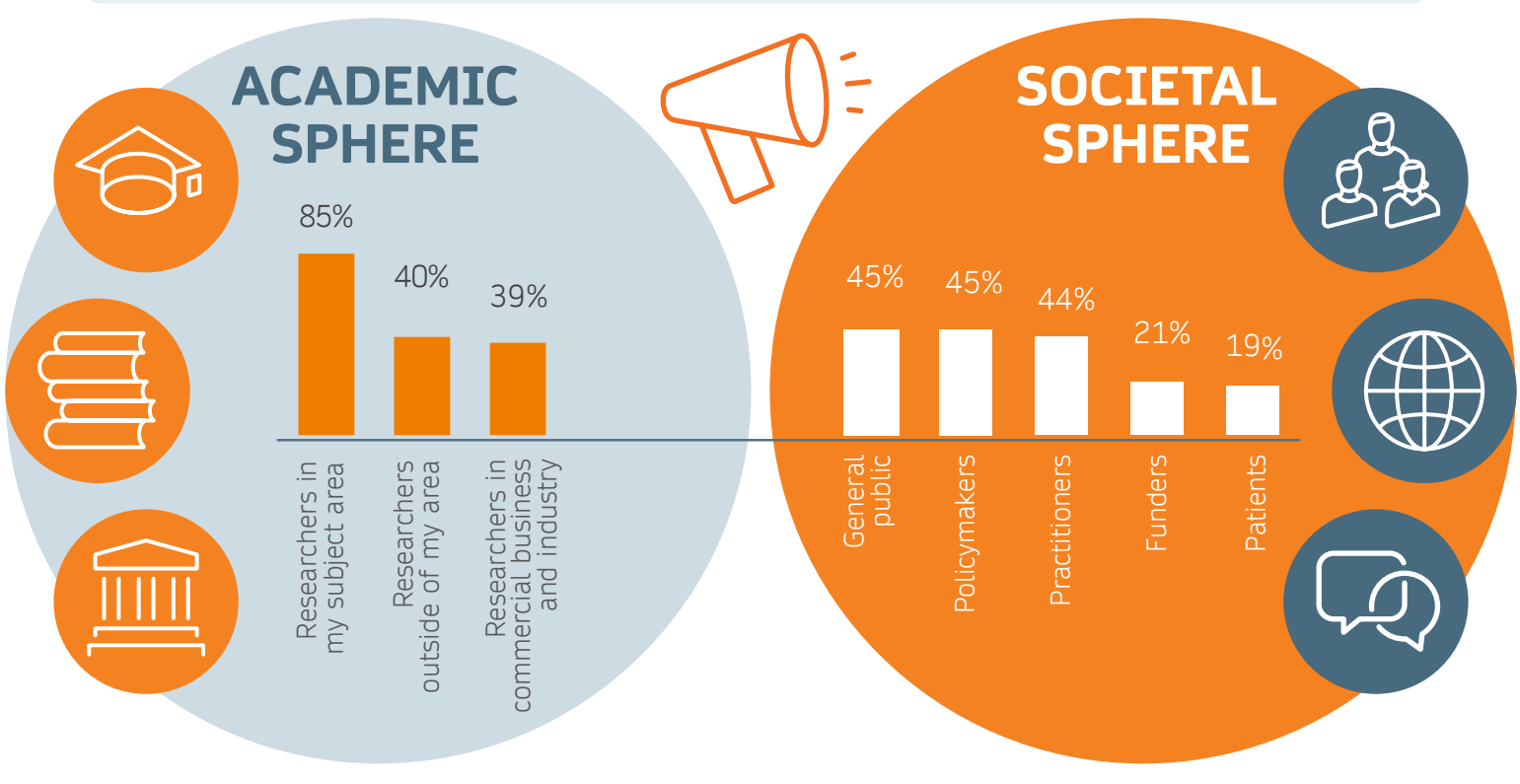
There is a lot of growth in scientific social networking and increased visits to them by the public.

Because in these scientific social networks, people who really understand scientific writing are connected. All scientists in my area are users of social networks.

MEASURING ACADEMIC VS. SOCIETAL IMPACT

An overwhelming majority of researchers track the societal impact of their research to some extent, but there is limited tracking of impact outside of academic research.

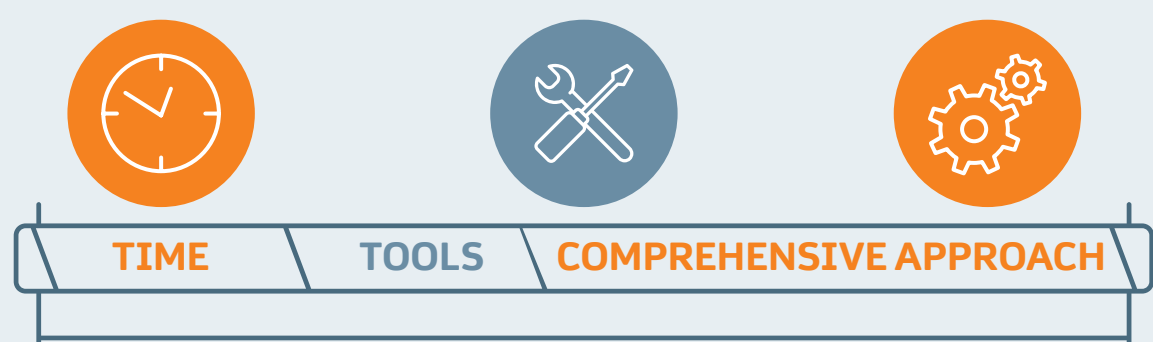
Q Which of the following audiences were you trying to reach with your most recent publication?



Q Which **one** method do you think is the best for tracking the societal impact of your research?



What are the **biggest roadblocks** stopping researchers from measuring the societal impact of their work?



To learn more about our new strategic partnership to accelerate progress on global societal challenges through open research, visit: springernature.com/SDGimpact



Our partners



Our technology partners

