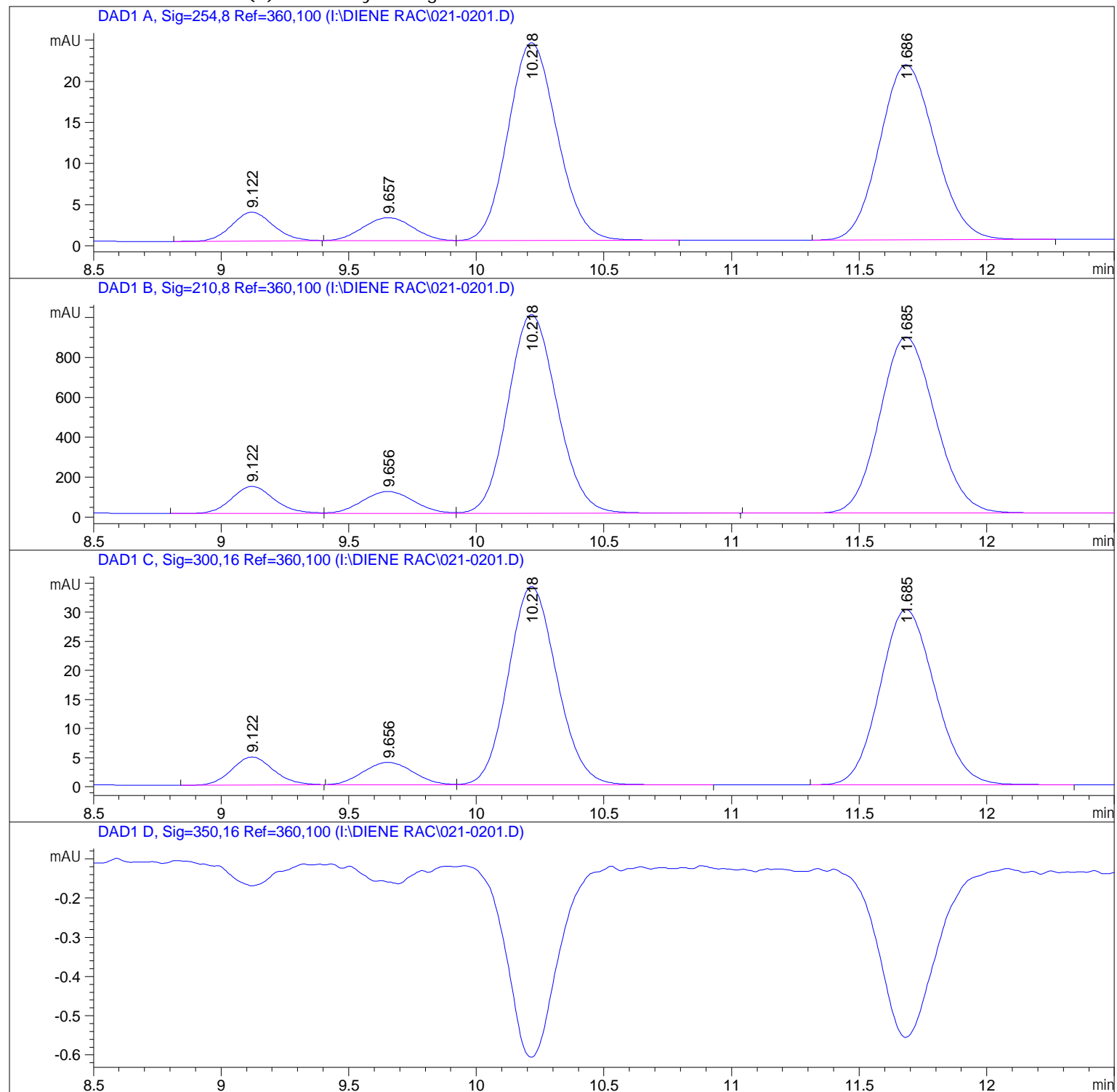
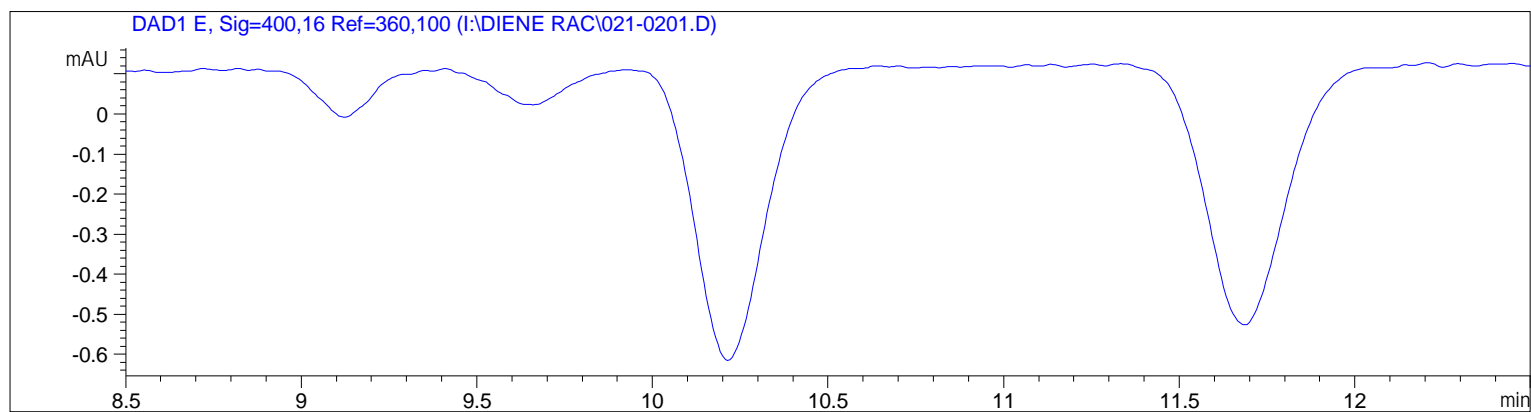


=====

Acq. Operator	: MC	Seq. Line	: 2
Acq. Instrument	: Instrument 1	Location	: Vial 21
Injection Date	: 2017-11-14 10:34:44	Inj	: 1
		Inj Volume	: 1.000 µl
Acq. Method	: C:\CHEM32\1\DATA\MC\2017-11-14 2017-11-14 10-16-19\IPA90_10_15MIN.M		
Last changed	: 2017-07-20 15:08:00 by MC		
Analysis Method	: C:\CHEM32\1\METHODS\DEF_LC.M		
Last changed	: 2018-05-24 19:30:53		
	(modified after loading)		
Additional Info : Peak(s) manually integrated			





=====
 Area Percent Report
 =====

Sorted By : Signal
 Multiplier : 1.0000
 Dilution : 1.0000
 Use Multiplier & Dilution Factor with ISTDs

Signal 1: DAD1 A, Sig=254,8 Ref=360,100

Peak #	RetTime [min]	Type	Width [min]	Area [mAU*s]	Height [mAU]	Area %
1	3.247	BB	0.0629	5.39265	1.34050	0.7443
2	9.122	BB	0.1729	39.22845	3.49685	5.4141
3	9.657	BB	0.2130	37.31130	2.77282	5.1495
4	10.218	BB	0.2077	320.69815	24.02731	44.2608
5	11.686	BB	0.2365	321.93478	21.28067	44.4314

Totals : 724.56533 52.91815

Signal 2: DAD1 B, Sig=210,8 Ref=360,100

Peak #	RetTime [min]	Type	Width [min]	Area [mAU*s]	Height [mAU]	Area %
1	9.122	BV	0.1764	1566.79883	136.03677	5.2598
2	9.656	VV	0.2204	1523.33313	109.45454	5.1139
3	10.218	VB	0.2084	1.33386e4	995.17572	44.7781
4	11.685	BB	0.2366	1.33595e4	882.40894	44.8483

Totals : 2.97883e4 2123.07597

Signal 3: DAD1 C, Sig=300, 16 Ref=360, 100

Peak #	RetTime [min]	Type	Width [min]	Area [mAU*s]	Height [mAU]	Area %
1	9.122	BB	0.1754	54.11639	4.80560	5.3629
2	9.656	BV	0.2138	51.67562	3.81973	5.1210
3	10.218	VB	0.2065	451.49057	34.09642	44.7427
4	11.685	BB	0.2350	451.80035	30.11833	44.7734

Totals : 1009.08293 72.84008

Signal 4: DAD1 D, Sig=350, 16 Ref=360, 100

Signal 5: DAD1 E, Sig=400, 16 Ref=360, 100

=====
*** End of Report ***