

Sample Name: MM-chlorideNHPI EN

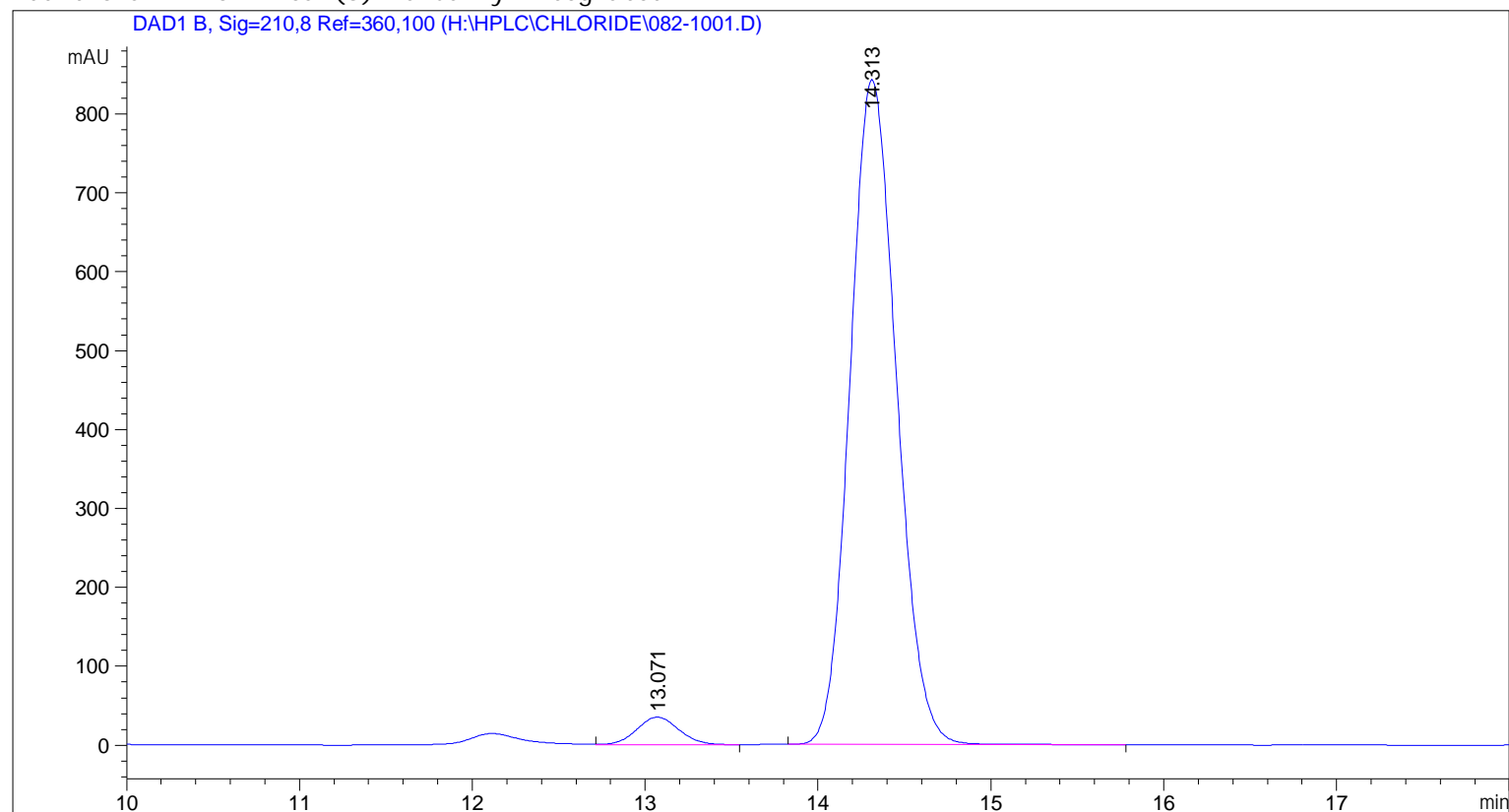
```

=====
Acq. Operator   : MC                      Seq. Line :   10
Acq. Instrument : Instrument 1             Location  : Vial 82
Injection Date  : 2018-07-20 15:53:00     Inj       :    1
                                           Inj Volume: 5.000 µl

Acq. Method     : C:\CHEM32\1\DATA\MC\YZZ-5-026-RACEMIC 2018-07-20 13-16-58\IPA80_20_30MIN.M
Last changed    : 2018-07-20 15:55:58 by MC
                  (modified after loading)

Analysis Method : C:\CHEM32\1\METHODS\DEF_LC.M
Last changed    : 2018-07-20 17:17:34
                  (modified after loading)

Additional Info : Peak(s) manually integrated
  
```



```

=====
                        Area Percent Report
=====
  
```

```

Sorted By      :      Signal
Multiplier     :      1.0000
Dilution       :      1.0000
Use Multiplier & Dilution Factor with ISTDs
  
```

Signal 1: DAD1 B, Sig=210,8 Ref=360,100

Peak #	RetTime [min]	Type	Width [min]	Area [mAU*s]	Height [mAU]	Area %
1	13.071	VB	0.2645	593.94049	34.90332	3.6400
2	14.313	BB	0.2917	1.57232e4	842.68188	96.3600

Totals : 1.63171e4 877.58521

=====
*** End of Report ***