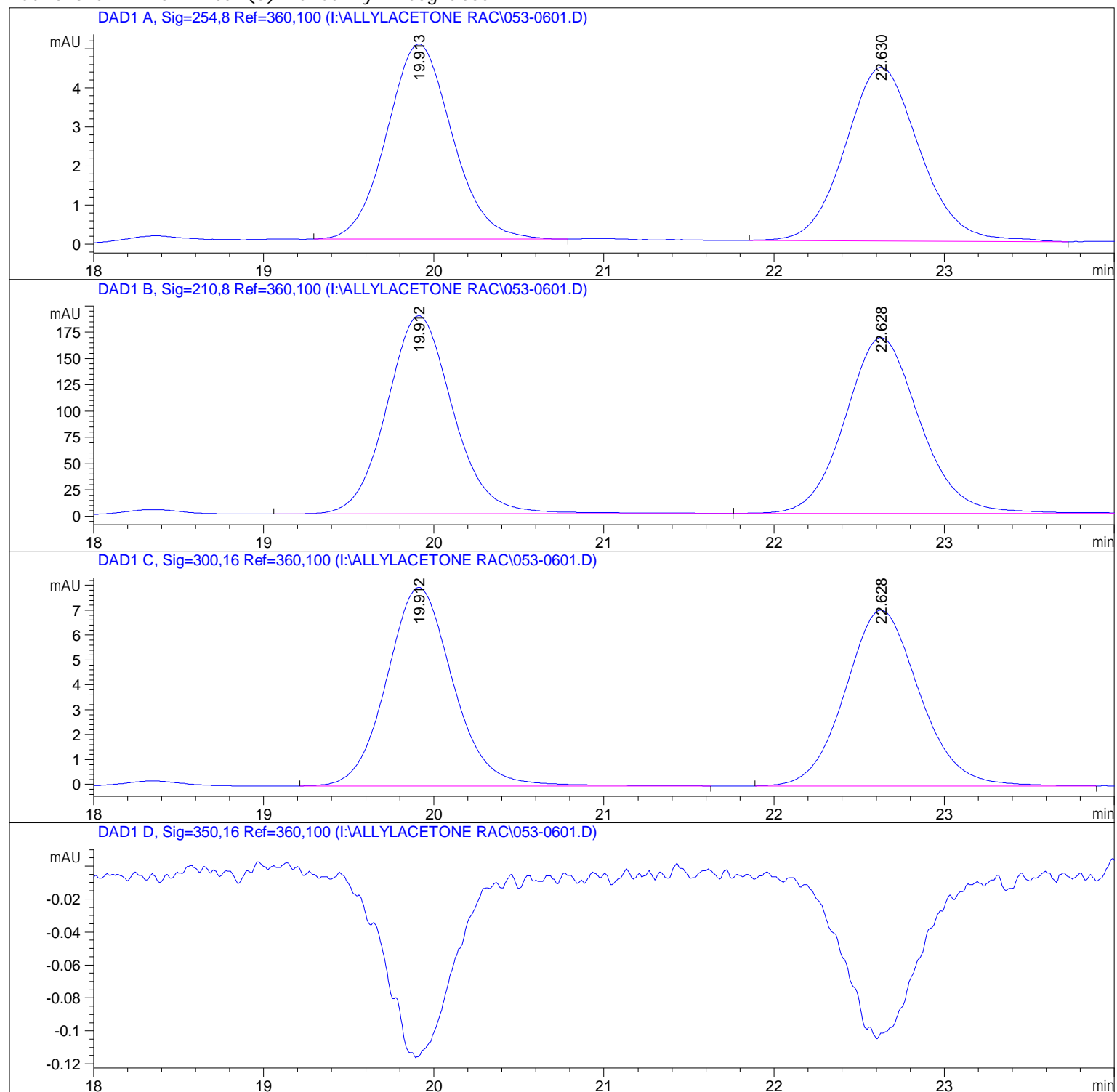


Sample Name: Allylacetone rac 9:1 1A

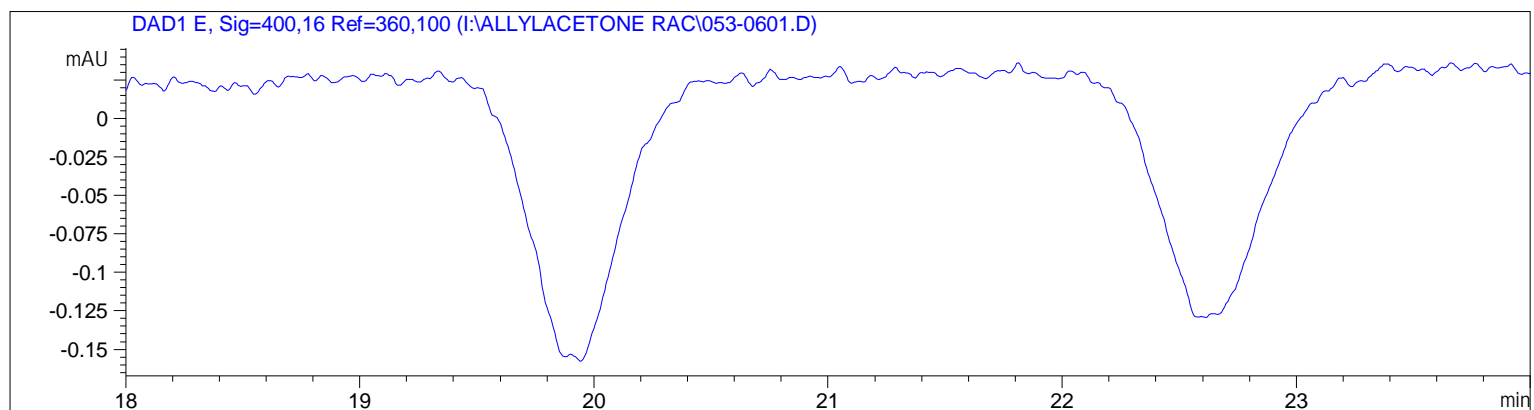
=====

Acq. Operator	: MC	Seq. Line	: 6
Acq. Instrument	: Instrument 1	Location	: Vial 53
Injection Date	: 2017-07-14 00:08:16	Inj	: 1
		Inj Volume	: 1.000 µl
Acq. Method	: C:\CHEM32\1\DATA\MM\MC-2-3_AND_MC-2-6-1_2_3 2017-07-13 22-45-38\IPA90_10_30MIN.M		
Last changed	: 2017-07-05 10:41:38 by MC		
Analysis Method	: C:\CHEM32\1\METHODS\DEF_LC.M		
Last changed	: 2018-05-24 19:27:07 (modified after loading)		

Additional Info : Peak(s) manually integrated



Sample Name: Allylacetone rac 9:1 1A



=====
 Area Percent Report
 =====

Sorted By : Signal
 Multiplier : 1.0000
 Dilution : 1.0000
 Use Multiplier & Dilution Factor with ISTDs

Signal 1: DAD1 A, Sig=254,8 Ref=360,100

Peak #	RetTime [min]	Type	Width [min]	Area [mAU*s]	Height [mAU]	Area %
1	3.019	BB	0.0655	6.76785	1.59646	2.4571
2	19.913	BB	0.4040	133.45319	4.99090	48.4508
3	22.630	BB	0.4572	135.21957	4.44090	49.0921

Totals : 275.44061 11.02825

Signal 2: DAD1 B, Sig=210,8 Ref=360,100

Peak #	RetTime [min]	Type	Width [min]	Area [mAU*s]	Height [mAU]	Area %
1	19.912	BB	0.4166	5113.89307	188.45009	49.8942
2	22.628	BB	0.4683	5135.58887	167.22684	50.1058

Totals : 1.02495e4 355.67693

Signal 3: DAD1 C, Sig=300,16 Ref=360,100

Peak #	RetTime [min]	Type	Width [min]	Area [mAU*s]	Height [mAU]	Area %
1	19.912	BB	0.4124	216.46632	7.98067	50.2461
2	22.628	BB	0.4562	214.34593	7.06082	49.7539

Totals : 430.81226 15.04149

Signal 4: DAD1 D, Sig=350, 16 Ref=360, 100

Signal 5: DAD1 E, Sig=400, 16 Ref=360, 100

=====
*** End of Report ***