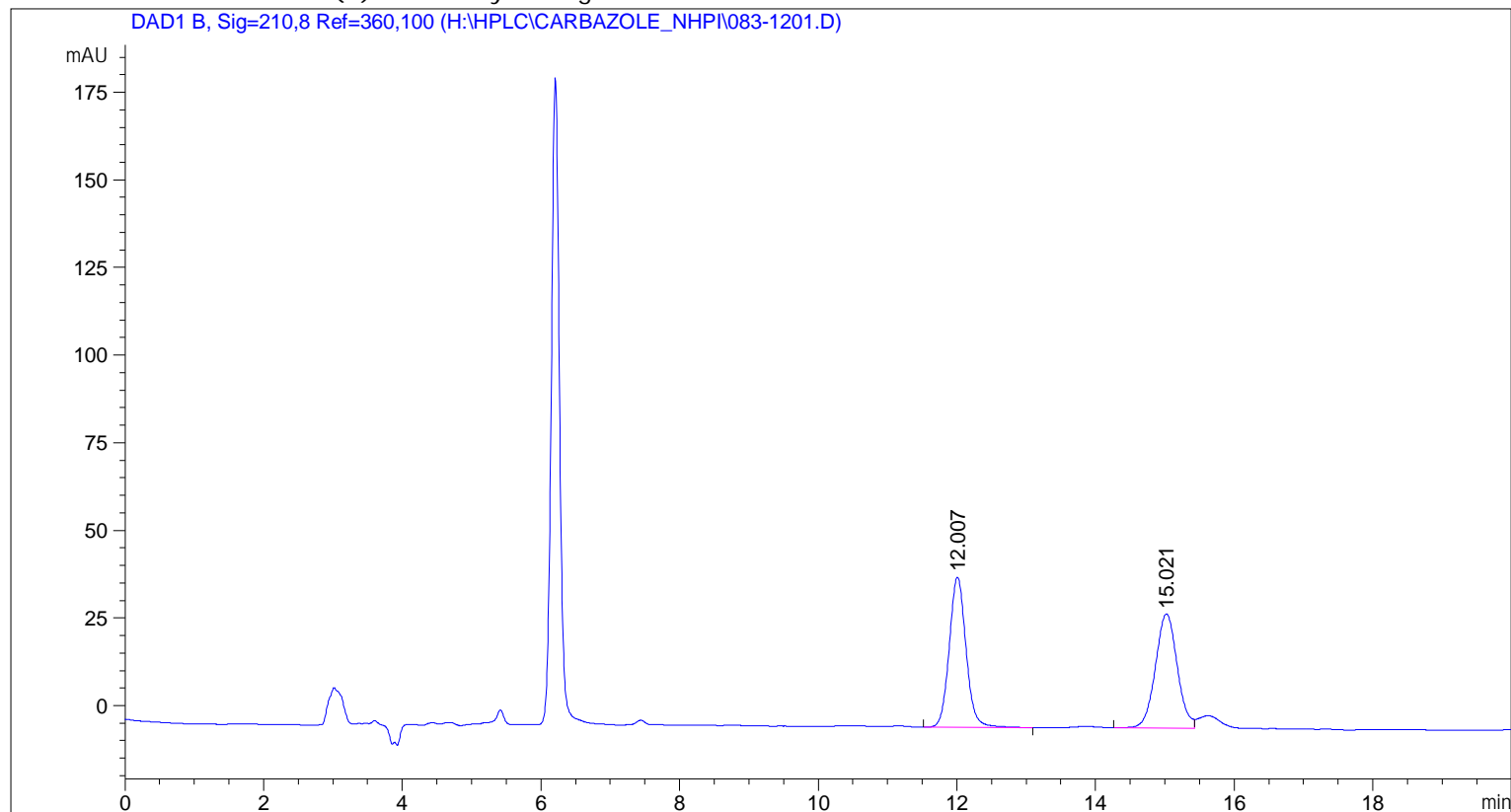


Sample Name: MM06-15B IPA 20 IA RAC

=====

Acq. Operator	: MC	Seq. Line	: 12
Acq. Instrument	: Instrument 1	Location	: Vial 83
Injection Date	: 2017-10-03 17:59:24	Inj	: 1
		Inj Volume	: 5.000 µl
Acq. Method	: C:\CHEM32\1\DATA\MC\2017-10-03 2017-10-03 11-39-26\IPA80_20_40MIN.M		
Last changed	: 2017-08-01 15:03:14 by MC		
Analysis Method	: C:\CHEM32\1\METHODS\DEF_LC.M		
Last changed	: 2018-03-23 17:07:05		
	(modified after loading)		
Additional Info : Peak(s) manually integrated			



=====

Area Percent Report

=====

Sorted By : Signal  
Multiplier : 1.0000  
Dilution : 1.0000  
Use Multiplier & Dilution Factor with ISTDs

Signal 1: DAD1 B, Sig=210,8 Ref=360,100

Peak #	RetTime [min]	Type	Width [min]	Area [mAU*s]	Height [mAU]	Area %
1	12.007	BB	0.2591	724.13770	42.87294	50.2826
2	15.021	BV	0.3399	715.99841	32.63739	49.7174

Totals : 1440.13611 75.51033

=====