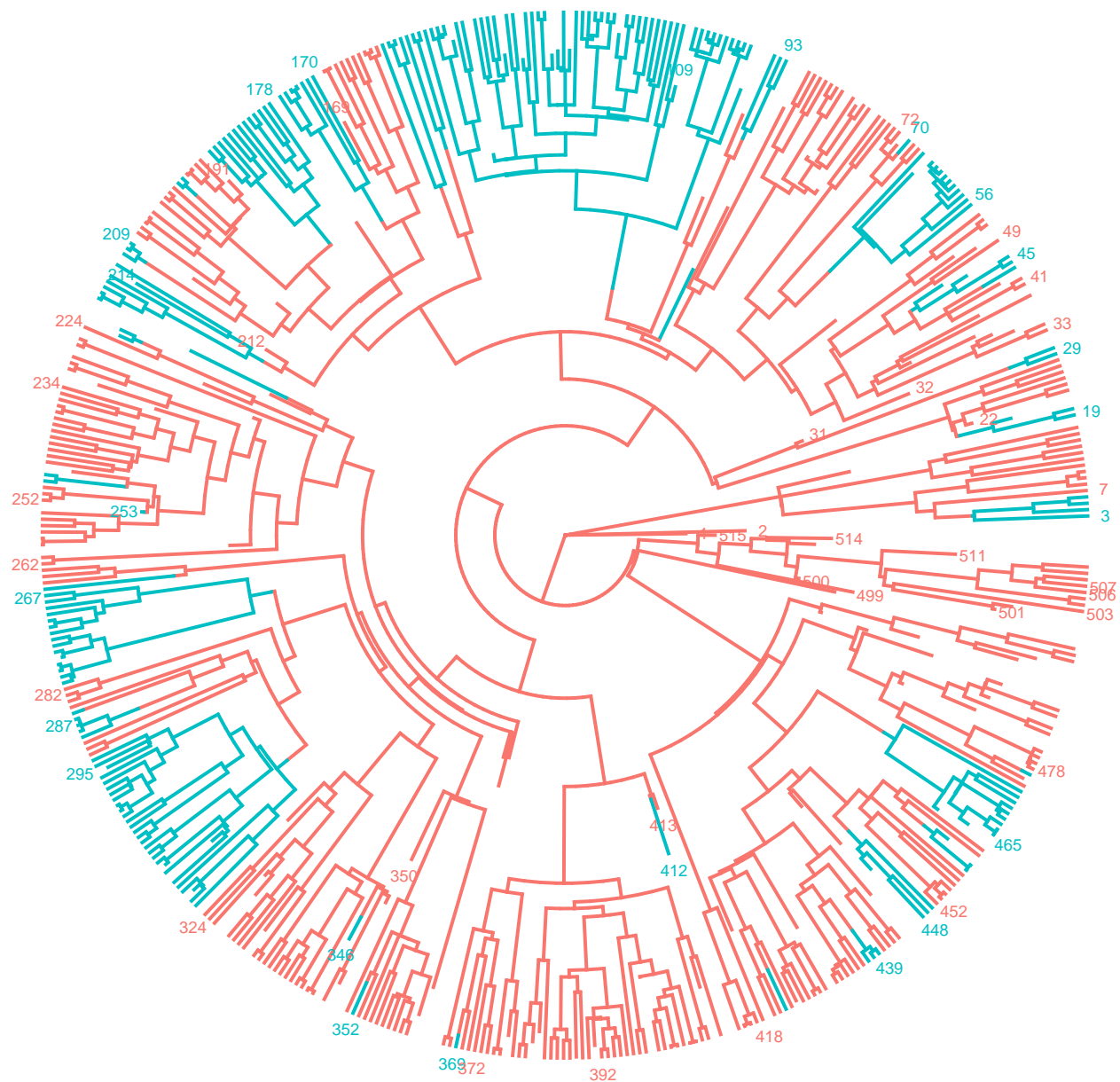


## AnalysisPosteriorQuantileSimulations

*Venelin Mitov*

8 February 2018



```
## BM 1:
##   Sigma[a11]   Sigma[a12]   Sigmae[a11]
##   1.988010     0.662790     0.007254
## Generate.data.common called...
## BM 2:
##   Sigma[a11]   Sigma[a12]   Sigmae[a11]
```

```

##      0.8013      0.4959      0.1333
## Generate.data.common called...
## OU 1:
##      H2[b11]      H2[b22]      H2[b12]      Theta[b1]      Theta[b2]      Sigma[a11]
##      1.3645      0.2793      -0.2495      1.0911      2.2676      1.0410
##      Sigma[a12]      Sigmae[a11]
##      -0.3316      0.3199
## Generate.data.common called...
## OU 2:
##      H2[b11]      H2[b22]      H2[b12]      Theta[b1]      Theta[b2]      Sigma[a11]
##      0.09714      1.18693      0.26380      0.90259      1.47010      0.33882
##      Sigma[a12]      Sigmae[a11]
##      0.30279      0.03857
## Generate.data.common called...
## JOU 1:
##      H2[b11]      H2[b22]      H2[b12]      Theta[b1]      Theta[b2]      Sigma[a11]
##      0.278473      0.651209      -0.019471      2.937781      2.555545      1.845759
##      Sigma[a12]      Sigmae[a11]      Sigmaj[b11]
##      1.290677      0.003749      0.001783
## Generate.data.common called...
## JOU 2:
##      H2[b11]      H2[b22]      H2[b12]      Theta[b1]      Theta[b2]      Sigma[a11]
##      1.88566      0.20068      -0.12451      1.14870      2.46178      0.86387
##      Sigma[a12]      Sigmae[a11]      Sigmaj[b11]
##      -0.75448      0.03766      0.00370
## Generate.data.common called...
## TwoSpeedOU 1:
##      H1[a11]      H1[b11]      H1[b12]      H2[b11]      H2[b22]      H2[b12]
##      0.3131025      0.3234633      -0.9723602      0.5124452      0.0219240      0.0632051
##      Theta[b1]      Theta[b2]      Sigma[a11]      Sigma[a12]      Sigmae[a11]
##      1.4550251      0.9602627      3.5086448      -0.8740056      0.0004017
## Generate.data.common called...
## TwoSpeedOU 2:
##      H1[a11]      H1[b11]      H1[b12]      H2[b11]      H2[b22]      H2[b12]
##      -0.2      0.2      0.0      10.0      -1.0      -1.0
##      Theta[b1]      Theta[b2]      Sigma[a11]      Sigma[a12]      Sigmae[a11]
##      5.0      5.0      1.0      1.0      0.1
##      [,1]      [,2]
## [1,] 0.07819 0.3176
## [2,] 0.31757 3.5714
## Generate.data.common called...

```

