

# Occupational Exposure to Endocrine-Disrupting Chemicals and Birth Weight and Length of Gestation: A European Meta-Analysis

Laura Birks, Maribel Casas, Ana M. Garcia, Jan Alexander, Henrique Barros, Anna Bergström, Jens Peter Bonde, Alex Burdorf, Nathalie Costet, Asta Danileviciute, Merete Eggesbø, Mariana F. Fernández, M. Carmen González-Galarzo, Regina Gražulevičienė, Wojciech Hanke, Vincent Jaddoe, Manolis Kogevinas, Inger Kull, Aitana Lertxundi, Vasiliki Melaki, Anne-Marie Nybo Andersen, Nicolás Olea, Kinga Polanska, Franca Rusconi, Loreto Santa-Marina, Ana Cristina Santos, Tanja Vrijkotte, Daniela Zugna, Mark Nieuwenhuijsen, Sylvaine Cordier, and Martine Vrijheid

<http://dx.doi.org/10.1289/EHP208>

Received: 3 July 2015  
Revised: 7 October 2015  
Accepted: 28 April 2016  
Published: 6 May 2016

**Note to readers with disabilities:** *EHP* will provide a [508-conformant](#) version of this article upon final publication. If you require a 508-conformant version before then, please contact [ehp508@niehs.nih.gov](mailto:ehp508@niehs.nih.gov). Our staff will work with you to assess and meet your accessibility needs within 3 working days.

## **Occupational Exposure to Endocrine-Disrupting Chemicals and Birth Weight and Length of Gestation: A European Meta-Analysis**

Laura Birks,<sup>1-3</sup> Maribel Casas,<sup>1-3</sup> Ana M. Garcia,<sup>2,4,5</sup> Jan Alexander,<sup>6</sup> Henrique Barros,<sup>7</sup> Anna Bergström,<sup>8</sup> Jens Peter Bonde,<sup>9</sup> Alex Burdorf,<sup>10</sup> Nathalie Costet,<sup>11</sup> Asta Danileviciute,<sup>12</sup> Merete Eggesbø,<sup>6</sup> Mariana F. Fernández,<sup>2,13</sup> M. Carmen González-Galarzo,<sup>4</sup> Regina Gražulevičienė,<sup>12</sup> Wojciech Hanke,<sup>14</sup> Vincent Jaddoe,<sup>15</sup> Manolis Kogevinas,<sup>1,2,16,17</sup> Inger Kull,<sup>18,19</sup> Aitana Lertxundi,<sup>20,21</sup> Vasiliki Melaki,<sup>22</sup> Anne-Marie Nybo Andersen,<sup>23</sup> Nicolás Olea,<sup>2,13</sup> Kinga Polanska,<sup>14</sup> Franca Rusconi,<sup>24</sup> Loreto Santa-Marina,<sup>2,23,25</sup> Ana Cristina Santos,<sup>8</sup> Tanja Vrijkotte,<sup>26</sup> Daniela Zugna,<sup>27</sup> Mark Nieuwenhuijsen,<sup>1-3</sup> Sylvaine Cordier,<sup>11</sup> and Martine Vrijheid<sup>1-3</sup>

<sup>1</sup>ISGlobal, Center for Research in Environmental Epidemiology, Barcelona, Spain; <sup>2</sup>Consorcio de Investigación Biomédica de Epidemiología y Salud Pública, Spain; <sup>3</sup>Universitat Pompeu Fabra, Barcelona, Spain; <sup>4</sup>Department of Preventive Medicine and Public Health, University of Valencia, Valencia, Spain; <sup>5</sup>Center for Research in Occupational Health, Barcelona, Spain; <sup>6</sup>Norwegian Institute of Public Health, Oslo, Norway; <sup>7</sup>Department of Clinical Epidemiology, Predictive Medicine and Public Health, University of Porto Medical School, Porto, Portugal; <sup>8</sup>Institute of Environmental Medicine, Karolinska Institutet, Stockholm, Sweden; <sup>9</sup>Department of Occupational and Environmental Medicine, Copenhagen University Hospital Bispebjerg, Copenhagen, Denmark; <sup>10</sup>Department of Public Health, Erasmus University Medical Center, Rotterdam, the Netherlands; <sup>11</sup>National Institute of Health and Medical Research, InsermU1085 – Irset, University of Rennes, Rennes, France; <sup>12</sup>Department of Environmental Science, Vytautas Magnus University, Kaunas, Lithuania; <sup>13</sup>Instituto de Investigación Biosanitaria

ibs.Granada, University of Granada, Granada, Spain; <sup>14</sup>Department of Environmental Epidemiology, Nofer Institute of Occupational Medicine, Lodz, Poland; <sup>15</sup>The Generation R Study Group, Department of Epidemiology, Department of Pediatrics, Erasmus University Medical Center, Rotterdam, the Netherlands; <sup>16</sup>Hospital Del Mar Medical Research Institute, Barcelona, Spain; <sup>17</sup>National School of Public Health, Athens, Greece; <sup>18</sup>Sachs' Children's Hospital, Södersjukhuset, Stockholm, Sweden; <sup>19</sup>Department of Clinical Science and Education, Karolinska Institutet, Stockholm, Sweden; <sup>20</sup>Faculty of Medicine, University of the Basque Country, Leioa, Basque Country, Spain; <sup>21</sup>BioDonostia Health Research Institute, San Sebastian, Basque Country, Spain; <sup>22</sup>Department of Social Medicine, Faculty of Medicine, University of Crete, University Hospital of Heraklion, Crete, Greece; <sup>23</sup>Department of Public Health, University of Copenhagen, Copenhagen, Denmark; <sup>24</sup>Meyer Children's University Hospital, Florence, Italy; <sup>25</sup>Department of Health, Government of the Basque Country, San Sebastian, Spain; <sup>26</sup>Department of Public Health, Academic Medical Center, University of Amsterdam, Amsterdam, the Netherlands; <sup>27</sup>Cancer Epidemiology Unit, Department of Medical Sciences, University of Turin, Turin, Italy

**Address correspondence to** Laura Birks, Centre for Research in Environmental Epidemiology (CREAL), Doctor Aiguader, 88, 08003 Barcelona. Telephone: +34 932 147 319. | Fax +34 932 147 301. E-mail: [lbirks@creal.cat](mailto:lbirks@creal.cat)

**Running title:** Occupational exposure to EDCs and birth outcomes

**Acknowledgments:** This work was supported by the European Community's Seventh Framework Programme (grants FP7/2007-2013, 226285, 241604) as part of the Environmental Health Risks in European Birth Cohorts project ([www.enrieco.org](http://www.enrieco.org)) and the Developing a Child

Cohort Research Strategy for Europe project ([www.chicosproject.eu](http://www.chicosproject.eu)); and by the Instituto de Salud Carlos III (grant CD12/00563). Funding per cohort:

**ABCD:** This work was supported by the Netherlands Organization for Health Research and Development (grant 2100.0076)

**BAMSE:** This work was supported by the Swedish Heart-Lung Foundation; Stockholm County Council; Swedish Research Council for Health, Working Life and Welfare; and the European Commission's Seventh Framework 29 Program: the Mechanisms of the Development of Allergy (grant 261357).

**DNBC:** This work was supported by the Danish Epidemiology of Science Centre; Pharmacy Foundation; Egmont Foundation; March of Dimes Birth Defect Foundation; Agustinus Foundation; and the Health Foundation.

**Generation R:** This work was supported by the Erasmus Medical Center Rotterdam; Netherlands Organization for Health Research and Development; European Commission Seventh Framework Programme; and the Contaminant Mixtures and Human Reproductive Health Project (grant 212502); Vincent Jaddoe received an additional grant from the Netherlands Organization for Health Research and Development (grant VIDI 016.136.361) and Consolidator Grant from the European Research Council (grant ERC-2014-CoG-648916).

**Generation XXI:** This work was supported by the Programa Operacional de Saúde – Saúde XXI; Quadro Comunitário de Apoio III; Administração Regional de Saúde Norte (Regional Department of Ministry of Health); Portuguese Foundation for Science and Technology; Fundo Europeu de Desenvolvimento Regional, and the Calouste Gulbenkian Foundation.

**INMA\_Granada:** This work was supported by the Instituto de Salud Carlos III (grants G03/176, CB06/02/0041); Spanish Ministry of Health (grant FIS-07/0252); European Union Commission

(grants QLK4-1999-01422, QLK4-2002-00603, FP7-ENV-212502); and the Consejería de Salud de la Junta de Andalucía (grant 183/07; 0675-2010).

**INMA\_New:** This work was supported by the European Union (grants FP7-ENV-2011, 282957, HEALTH.2010.2.4.5-1); Instituto de Salud Carlos III (grants G03/176, CB06/02/0041, FIS-FEDER 03/1615, 04/1509, 04/1112, 04/1931, 05/1079, 05/1052, 06/1213, 07/0314, 09/02647, 11/01007, 11/02591, CP11/00178, FIS-PI06/0867, FIS-PS09/00090); Conselleria de Sanitat Generalitat Valenciana; Spanish Ministry of Health (FIS-PI041436, FIS-PI081151, FIS-PI042018, FIS-PI09/02311); Generalitat de Catalunya (grants CIRIT1999SGR, 00241); Obre Social Cajastur; Universidad de Oviedo; Department of Health of the Basque Government (grants 2005111093, 2009111069); and the Provincial Government of Gipuzkoa (grants DFG06/004, DFG08/001).

**KANC:** This work was supported by the European Commission (grant FP6-036224).

**MoBa:** This work was supported by the Norwegian Ministry of Health; National Institutes of Health; National Institute of Environmental Health Sciences (grant N01-ES-85433); National Institute of Neurological Disorders and Stroke (grant 1 U01 NS 047537); Norwegian Research Council; and Functional Genomics (grant 151918/S10); and Environmental Exposures and Health Outcomes (grant 213148).

**NINFEA:** This work was supported by the Compagnia San Paolo Foundation; and the Piedmont Region.

**PELAGIE:** This work was supported by the National Institute of Health and Medical Research; the French Ministry of Health; the French Ministry of Labor; French Agency for Food, Environmental and Occupational Health and Safety; French National Research Agency; and the French Institute for Public Health Surveillance.

**REPRO\_PL:** This work was supported by the National Centre for Research and Development, Poland (grants PBZ-MEiN-/8/2/2006, K140/P01/2007/1.3.1.1); the Norwegian Financial Mechanism within the Polish-Norwegian Research Fund (grant PNRF-218-AI-1/07); and European Community's Seventh Framework Programme (grant FP7/2007-2013, 603946)

**RHEA:** This work was supported by the European Union Integrated Project NewGeneris, 6th Framework Programme, (grant FOOD-CT-2005-016320); and the Health Impacts of Long-term Exposure to Disinfection By-products in Drinking Water project (grant Food-CT-2006-036224).

**Competing financial interests:** The authors declare they have no actual or potential competing financial interests.

## ABSTRACT

**Background:** Women of reproductive age can be exposed to endocrine-disrupting chemicals (EDCs) at work and exposure to EDCs in pregnancy may affect fetal growth.

**Objectives:** We assessed whether maternal occupational exposure to EDCs during pregnancy as classified by application of a job exposure matrix was associated with birth weight, term low birth weight (LBW), length of gestation, and preterm delivery.

**Methods:** Using individual participant data from 133,957 mother-child pairs in 13 European cohorts spanning births from 1994 to 2011, we linked maternal job titles with exposure to 10 EDC groups as assessed through a job exposure matrix. For each group, we combined the two levels of exposure categories (possible and probable) and compared birth outcomes with the unexposed group (exposure unlikely). We performed meta-analyses of cohort-specific estimates.

**Results:** Eleven percent of pregnant women were classified as exposed to EDCs at work during pregnancy based on job title. Classification of exposure to one or more EDC group was associated with an increased risk of term LBW (OR 1.25, 95%CI 1.04, 1.49), as were most specific EDC groups; this association was consistent across cohorts. Further, the risk increased with increasing number of EDC groups (OR 2.11 95%CI 1.10, 4.06 for exposure to 4 or more EDC groups). There were few associations ( $p < 0.05$ ) with the other outcomes; women holding job titles classified as exposed to bisphenol A or brominated flame retardants were at higher risk for longer length of gestation.

**Conclusion:** Results from our large population-based birth cohort design indicate that employment during pregnancy in occupations classified as possibly or probably exposed to EDCs was associated with an increased risk of term LBW.

## **INTRODUCTION**

### Background

Potential endocrine-disrupting chemicals (EDCs) have been described as man-made substances that alter hormone regulation in humans or wildlife (World Health Organization 2012). The endocrine system regulates many essential body functions such as growth, behavior, and reproduction through the controlled release of hormones. EDCs include many synthetic and natural chemicals such as polycyclic aromatic hydrocarbons (PAHs), polychlorinated biphenyls (PCBs), pesticides, phthalates, organic solvents, phenols such as bisphenol A (BPA), alkylphenolic compounds (APCs), brominated flame-retardants (BFRs), some metals, and parabens. Human exposure to EDCs have been associated with a wide range of health outcomes such as breast, prostate and testis cancer, diabetes, obesity, and decreased fertility (De Coster and van Larebeke 2012; McLachlan et al. 2006). While policy regarding the use of EDCs has evolved over the years, EDCs remain present in some foods, consumer products, and in the workplace (De Coster and van Larebeke 2012; World Health Organization 2012). Individuals in the general population are exposed to small concentrations of EDCs through diet and consumer products, but some individuals can be exposed to substantially higher concentrations of EDCs at work (World Health Organization 2012).

Women make up half of the workforce and many of them are of reproductive age (European Agency for Safety and Health at Work 2013). During pregnancy, periods of fetal vulnerability occur during growth and development of organs and systems, leaving the fetus particularly sensitive to environmental factors (Grandjean et al. 2008). This is cause for concern considering



EDCs are potentially damaging during the embryonic and fetal periods because they resemble or interfere with the hormones, neurotransmitters, growth factors and other signaling substances that normally regulate fetal development (De Coster and van Larebeke 2012). Previous studies have evaluated the impact of maternal EDC exposure in the general population on fetal growth and found exposure associated with impaired growth (Govarts et al. 2012; Lopez-Espinosa et al. 2011; Wolff et al. 2008). However, studies of maternal occupational exposure to EDCs and fetal growth outcomes are few and limited in size (less than 5,000 subjects), providing insufficient sample size to evaluate infrequent occupational exposures (Snijder et al. 2012, 2011).

## Objectives

This study aimed to assess whether maternal occupational exposure to EDCs as classified by a job exposure matrix was associated with birth weight, term low birth weight (LBW), length of gestation, and preterm delivery in a population of 133,957 mother-child pairs from 13 population-based birth cohorts in 11 European countries.

## **METHODS**

### Study population

As part of the Environmental Health Risks in European Birth Cohorts (ENRIECO) and Developing a Child Cohort Research Strategy for Europe (CHICOS) projects, data held by existing European birth cohorts was inventoried, including data on birth and child health outcomes and maternal occupation (Larsen et al. 2013; Vrijheid et al. 2012). Among these birth

cohorts, thirteen participated in a previous study regarding maternal occupations and birth outcomes (Casas et al. 2015a) and were invited to participate in this new study. All 13 birth cohorts accepted to participate, including a total of 221,837 mother-child pairs followed at birth in the cohorts from 11 different countries spanning all regions of Europe (Table 1). Informed consent was obtained from all study participants as part of the original studies and in accordance with each study's institutional review board.

The population sample for the present analysis was limited to: live born infants (defined as a birth of an infant showing signs of life at a gestational age of at least 22 completed weeks or weighting 500 g or more), singleton pregnancies, women being employed during the period starting one month before conception until birth, women with occupations coded according to the International Standard Classification of Occupations of 1988 (ISCO88), and with information on birth weight or length of gestation. From the 221,837 mother-child pairs followed at birth, 133,957 pregnant women fulfilled these criteria (Table 1). Research has shown that the active working population, particularly among women, is healthier than the non-working population (Shah 2009) and that this is likely to result in differences in birth outcomes such as birth weight (Casas et al. 2015a). Therefore, we have excluded non-working women from our analysis.

#### Occupational exposure to EDCs

Information whether the mother worked during the period starting one month before conception until birth and the corresponding job title was collected through self-reports or from

questionnaires conducted by trained interviewers during pregnancy or after birth in each participating cohort (Table 1). To estimate maternal occupational exposure to EDCs during pregnancy, we linked the occupational ISCO88 codes of our population to a job exposure matrix (JEM) for EDCs (Brouwers et al. 2009). To develop this JEM, three experts expanded on the UK EDC JEM created by van Tongeren et al (Van Tongeren et al. 2002) and assigned exposure probability scores for all chemical groups to 353 different job titles, made for workers in the Netherlands between 2005 and 2007 (Brouwers et al. 2009). This JEM classified EDCs into 10 general chemical groups and 33 subgroups (Table 2) considering those substances in which occupational exposure was expected to contribute significantly to an individual's body burden compared to other sources such as diet. The 10 chemical groups are the following: PAHs, PCBs, pesticides, phthalates, organic solvents, BPA, APCs, BFRs, metals, and miscellaneous (benzophenones, parabens, and siloxanes); as well as a category dichotomously indicating exposure to one or more EDC groups. This JEM estimated exposure to these chemical groups for these 353 job titles with three levels of exposure probability: "unlikely", "possible" and "probable". The exposure estimates refer to the occupational exposure level that would exceed the background level of exposure in the general population. This JEM makes no distinction between routes of exposure (inhalation, ingestion, or dermal). The JEM includes a fourth exposure category, "unclassifiable" which indicates that exposure cannot be determined.

Since the JEM coded occupations using the Standard Occupational Classification 2000 (SOC2000) system, the JEM was first translated from SOC2000 to ISCO88 codes using the CAMSIS tool (CAMSIS 2005). Of the 133,957 women who had occupational history available and had an ISCO88 job code, the JEM provided exposure estimates for 95,280 women and

labeled 2,585 women as exposure unclassifiable (Table 3). For the remaining 36,092 women in our population, three occupational experts (S.C, A.M.G., and M.N.) evaluated their corresponding ISCO88 codes and assigned a similar ISCO88 code for which a JEM score was available. For example, our translated JEM did not provide a score for the occupation “Chemical engineering technicians” (ISCO88=3116); therefore our occupational experts assigned a proxy ISCO88 code that was in our JEM, “Chemical and physical science technicians” (ISCO88=3111) keeping in mind similar EDC exposure in the workplace (see Supplemental Material, Excel File Table S2). This yielded exposure estimates for 35,999 women more. Experts categorized 93 women as exposure unclassifiable. With the CAMSIS tool and experts input together, this yielded EDC exposure scores for 131,279 women (95,280 + 35,999) and labeled 2,678 women (2,585 + 93) as exposure unclassifiable. The 131,279 women for whom we could estimate exposure were used in our subsequent analysis (Table 3).

#### Birth weight and length of gestation

Birth weight and length of gestation were collected through medical records. The last menstrual period (LMP)-based length of gestation estimate was used if it was consistent by  $\leq 7$  days with the ultrasound (US)-based estimate. When these estimates were not consistent, or the LMP measurement was unavailable, the US-based estimate was preferred. If both measurements (LMP and US) were unavailable, the maternal reported length of gestation measurement was used.

The study focused on the following birth outcomes: birth weight (grams), term LBW (< 2500g versus  $\geq 2500$ g for births  $\geq 37$  weeks of gestation), length of gestation (in days), and preterm delivery (<37 weeks versus  $\geq 37$  weeks).

### Covariate data

Information on covariates used in this study was collected similarly in each cohort and included sex of the newborn (male, female), parity (0, 1, or  $\geq 2$ ), maternal age (continuous in years), maternal country of birth (European, non-European in cohorts where this was available and heterogeneous), marital status (living with the child's father, or not), maternal education (low, medium, high: defined within cohorts, see Supplemental Material, Table S3), maternal active smoking during pregnancy (none, <10 cigarettes/day, or  $\geq 10$  cigarettes/day), and maternal pre-pregnancy body mass index (BMI) (<18.5, 18.5–24.9, 25–29.9,  $\geq 30$  kg/m<sup>2</sup>).

### Statistical analysis

During the previous study all data was cleaned, variables were labeled, and categories were harmonized among all datasets in the 13 cohorts (Casas et al. 2015a). All analyses were performed using Stata 12 statistical software (Stata Corporation, College Station, Texas). For all associations, a *p*-value of  $\leq 0.05$  was used to define statistical significance.

Classification of maternal occupational exposure to EDCs overall was firstly evaluated by comparing exposure to one or more of the 10 EDC groups (“possible” and “probable” categories combined) with the unexposed group (“unlikely” exposure in all EDC groups), and secondly by comparing classified exposure to 1 to 3 EDC groups and 4 or more EDC groups with the unexposed group. Further, exposure classification (“possible” and “probable” combined) to each of the 10 specific EDC groups was compared to the same unexposed group (“unlikely” exposure in all EDC groups). Multivariate linear regression models were used for continuous variables (birth weight and length of gestation) and multivariate logistic regression models were used for dichotomous outcomes (term LBW and preterm delivery). For all models, we performed complete case analysis, only including subjects with available information on the exposure, outcome and covariates. All models were adjusted for the following potential confounders: parity, maternal age, maternal country of birth (only in those cohorts where this was heterogeneous: ABCD, BAMSE, Generation R, INMA New, NINFEA, and PELAGIE), maternal marital status, maternal education, maternal active smoking during pregnancy, maternal pre-pregnancy BMI, and sex of newborn.. Models for birth weight and term LBW were additionally adjusted for gestational length in weeks. The associations between classified maternal occupational exposure to EDCs and birth outcomes were first estimated for each individual cohort, using the above described covariate models which differed between cohorts only with regard to the maternal country of birth variable. Then, the estimated effects were meta-analyzed, combining separate estimations from each cohort (Cochran 1954; Harris et al. 2008). Results of meta-analyses for term LBW and preterm birth are reported only for exposures with a total of at least 5 exposed cases among all of the cohorts (combined). To test heterogeneity among cohorts, the Cochran’s  $Q$ -test and the  $I^2$  statistic were used (Higgins et al. 2003;

Thompson and Sharp 1999). If the  $Q$ -test was significant ( $p < 0.05$ ) and/or  $I^2 \geq 25\%$ , random effect analysis was used. We then used meta-regressions (Baker et al. 2009) to assess whether heterogeneity across cohorts was due to the timing during pregnancy when occupational history was collected (whole pregnancy period; 1st, 2nd and 3rd trimester; birth), the geographical region (Southern cohorts: Generation XXI, INMA Granada, INMA New, NINFEA, PELAGIE, and RHEA versus Northern cohorts: ABCD, BAMSE, DNBC, Generation R, KANC, MoBa, and REPRO\_PL), or the period of enrolment (before or after 2003). Further sensitivity analysis was performed to assess the robustness of our results by excluding DNBC and MoBa, the largest cohorts, from meta-analyses. Robustness was also explored by excluding elected cesareans and by stratifying associations by sex of the newborn, maternal education (primary or secondary versus university or more), and maternal active smoking during pregnancy (any or none) to evaluate the results in different strata of these variables.

#### Role of the funding source

The sponsors of the study had no role in study design, data collection, data analysis, data interpretation, or writing of the report. The corresponding author had full access to all the data in the study and had final responsibility for the decision to submit for publication.

## RESULTS

Among the 131,279 women in our analysis, the mean birth weight for newborns was 3,541 g (standard deviation (SD): 561 g). Babies in the RHEA cohort were the smallest with a mean birth

weight of 3,156 g (SD: 488 g) and babies in the MoBa cohort were the largest (mean: 3,604g, SD: 553 g) (Table 4). The mean length of gestation for all newborns in analysis was 39.8 weeks (SD: 1.8 weeks). Newborns in the RHEA cohort had also the shortest gestational period with a mean gestational length of 38.5 weeks (SD: 1.6 weeks) and newborns in the DNBC cohort had the largest length of gestation (mean: 40.0 weeks; SD: 1.7 weeks) (Table 4). In 8 of the 13 cohorts, < 2% of newborns were term LBW, compared with 2.2–5.6% in the remaining cohorts (Generation XXI, INMA Granada, INMA New, NINFEA, and RHEA).. The prevalence of preterm delivery was less than 6%, except in Generation XXI, NINFEA, and RHEA (7.2, 6.8, and 12.9% preterm, respectively) (Table 4). The distribution of covariates across cohorts is shown in the Supplemental Material, Table S4. Reported results are from complete case analysis.

Overall, 11% of women held jobs that were classified as possibly or probably exposed to EDCs (Table 5). INMA New and RHEA were the cohorts with the highest proportion of women with job titles classified as exposed to EDCs at work (27% and 30%, respectively) (Table 5). Many pregnant women held jobs classified as exposed in INMA Granada and PELAGIE cohorts with 25% and 16% of pregnant women exposed, respectively. NINFEA and MoBa had the lowest proportion of maternal occupational exposure to EDCs with 6% and 9% of women holding jobs classified as exposed, respectively. All other cohorts had an average exposure prevalence of around 11% (Table 5). A total of 116,358 mothers (89%) had jobs classified as unexposed to any EDCs at work and these were used as reference group in all analyses (Table 5).



There was no evidence for any statistically significant association with birth weight for job titles exposed to single EDC groups or for simultaneous exposure to multiple EDC groups (Table 6). The risk of delivering a term LBW baby was significantly increased among women with job titles classified as exposed to most single EDC exposure groups with ORs ranging from 1.33 (95%CI 1.02, 1.74) for APCs to 3.88 (95%CI 1.37, 11.02) for BFRs (though for BFRs, this was only based on 5 exposed cases) (Table 6). This resulted in a 25% increased risk for delivering a term LBW baby for women holding jobs classified as exposed to one or more EDC groups (OR 1.25 95% CI 1.04, 1.49) (Table 6 and Figure 1). Further, the risk increased with increasing exposure to more EDC groups at work (1-3 EDC groups: OR 1.25 95%CI 1.03, 1.52; 4 or more EDC groups: OR 2.11 95%CI 1.10, 4.06), though there was heterogeneity among cohorts for those exposed to 4 or more EDC groups (Table 6).

Maternal occupations classified as exposed to BPA or BFRs during pregnancy were associated with significantly longer gestational length (3.9 days 95%CI 0.7, 7.1 and 2.8 days 95%CI 0.7, 3.0, respectively) (Table 6). Among pregnant women that held job titles with exposure to any other EDC group, no significant associations were found with gestational length or preterm delivery (Table 6).

Among significant associations, we only observed heterogeneity between occupational exposure to phthalates and term LBW; and between occupational exposure to 4 or more EDC groups and term LBW (Table 6 and SM Figures S1, S2). Meta-regressions revealed that this heterogeneity was not due to the timing during pregnancy when occupational history was collected (whole

pregnancy period; 1st, 2nd and 3rd trimester; birth), the geographical region (Southern cohorts: Generation XXI, INMA Granada, INMA New, NINFEA, PELAGIE, and RHEA versus Northern cohorts: ABCD, BAMSE, DNBC, Generation R, KANC, MoBa, and REPRO\_PL), or the period of enrolment (before or after 2003). Sensitivity analysis revealed that after excluding the two largest cohorts in analysis (DNBC and MoBa), associations for exposure to phthalates and 4 or more EDC groups and term LBW were no longer heterogeneous. Further, women with occupations classified as exposed to four or more EDC groups, PAHs, pesticides, phthalates, or metals were at an increased risk for term LBW. Exposure to BFR and risk for term LBW could not be evaluated as there were only two exposed cases. For exposures to BPA or BFR and extended length of gestation, this association lost significance for exposure to BPA and stayed the same for BFR. All other significant analyses results maintained significance and ORs of similar magnitude (see Supplemental Material, Table S5). Upon excluding women who elected cesareans (n=6,889), all associations with term LBW and length of gestation were generally consistent, except for exposure to 4 or more EDC groups or phthalates, where ORs remained significant but weakened. Exposure to BFRs and association with term LBW lost significance (See Supplemental Material, Table S6). Stratified analyses by sex of the newborn did not change associations (Table 7). The association between exposure to one or more EDCs and term LBW was somewhat stronger in those without university education (OR 1.32 95% CI 1.06, 1.64) compared to those with university education (OR 1.24 95% CI 0.87, 1.77), and in smokers (OR 1.38 95% CI 1.01, 1.87) compared to non-smokers (OR 1.18 95% CI 0.93, 1.50) (Table 7).

## **DISCUSSION**

This large meta-analysis suggests that maternal employment during pregnancy in occupations classified as possibly or probably exposed to EDCs during pregnancy is associated a significant increased risk of term LBW in newborns and that this association is fairly consistent across European populations and across specific groups of EDCs. We also observed that occupational exposure to BPA and BFRs as classified by the JEM was associated with significantly longer length of gestation, although few mothers were occupationally exposed (n=59 and n=149, respectively). Birth weight and preterm delivery were not significantly associated with JEM classified occupational EDC exposure.

For term LBW, we found that pregnant women classified as exposed to PAHs, pesticides, phthalates, APCs, BFRs, or metals in the workplace were at significantly higher risk, and that the term LBW risk increased with increasing number of EDC groups, possibly indicating an exposure-response relationship. We restricted our analyses of LBW to term births as a way to distinguish between babies with LBW because of growth restriction and those with LBW because of early delivery. Indeed, term LBW may be a more sensitive outcome than birth weight, as suggested in relation to other environmental exposures such as air pollution (Dadvand et al. 2013; Pedersen et al. 2013).

In our study population, agricultural workers and hairdressers were classified as simultaneously exposed to at least four of these chemical groups, which made it difficult to determine whether a specific EDC group (or groups) was key for explaining associations with term LBW. It is possible also that the significant increase in risk with increasing number of EDCs is the result of

other conditions related to these occupations, such as exposure to heat, unsanitary conditions, or lifting, among others (Popendorf and Donham 1991). Medical assistants, transport laborers, and waitresses were those job titles classified as exposed solely to PAHs (see Supplemental Material, Excel File Table S1). Our findings regarding occupational exposure to PAHs and term LBW agree with other studies assessing PAH exposure through air monitoring or biomarkers (Choi et al. 2006; Dejmek et al. 2000; Suzuki et al. 2010). Term LBW risk was significantly associated with pesticide exposure in our study. Agricultural workers were classified as exposed to this chemical group, among several other EDC groups, while pesticides was the only EDC group to which veterinarians and life science technicians were classified as exposed. In the past, exposure to pesticides among pregnant women has been widely investigated (Chevrier et al. 2011; Gemmill et al. 2013; Rauch et al. 2012; Wickerham et al. 2012) and our findings fall in line with other studies that have reported associations between reduced birth weight and maternal exposure to pesticides, both ambient and occupational (Burdorf et al. 2011; Chevrier et al. 2011; Wickerham et al. 2012; Wohlfahrt-Veje et al. 2011). However, these studies evaluated continuous birth weight, not term LBW. Agricultural workers and hairdressers were classified as being exposed to phthalates, among other chemicals, and phthalate exposure was significantly associated with term LBW. Other studies report both negative (Huang et al. 2014; Zhang et al. 2009; Zhao et al. 2015) and null associations between phthalates and birth weight (Philippat et al. 2012; Suzuki et al. 2010; Wolff et al. 2008), but these have generally not focused on occupationally exposed populations. In our study, domestic cleaners and launderers were classified as exposed to APCs, including alkylphenols and alkylphenolic ethoxylates. Other studies regarding maternal APC exposure are rare; only the previously mentioned analysis in the Generation R cohort found a significant association with restricted fetal growth but did not

evaluate term LBW (Snijder et al. 2012). One study in China analyzed exposure to other phenols (bisphenol A, benzophenone-3, 4-*n*-octylphenol and 4-*n*-nonylphenol) and found that elevated maternal levels of benzophenone-3 in urine was associated with significant reduction in gestational length only in boys, but not significantly associated with low birth weight (Tang et al. 2013). More studies regarding the fetal impacts of APCs and other phenolic compounds in the general population and in the workplace are needed. The small group of mothers classified as exposed to BFRs with term LBW newborns in our study (n=5) worked in plastics or textile operatives. BFRs were recently classified as EDCs by researchers at an international BFR workshop after reviewing various publications from 2003-2007 (Legler 2008). Literature regarding its impact on fetal development in humans is limited (Zee et al. 2013). In our study, metals were the sole occupational EDC exposure for dental professionals, health professionals and machine workers. Regarding exposure to metals and term LBW, our findings reflect those found in other studies regarding maternal exposure to cadmium, but in said studies, maternal exposures were not exclusively occupational (Al-Saleh et al. 2014; Sun et al. 2014; Tang et al. 2013).

Continuous birth weight was not significantly associated with any category of maternal occupational exposure to EDCs in our analysis. Previous research regarding general population exposure to EDCs and birth weight is not consistent, with varied study designs and decreases and null associations reported (Meeker 2012). Research regarding occupational exposure to EDCs during pregnancy and birth weight is very scarce. A recent study in the Generation R cohort using the same JEM found that occupational exposure to PAHs and phthalates during pregnancy was significantly associated with reduced fetal weight estimated from ultrasounds (Snijder et al.

2012). Analyses of fetal growth measures could be a more sensitive evaluation of environmental influences during pregnancy instead of birth weight (Slama et al. 2014), but for our analysis, fetal measurements were not available for all cohorts.

Estimated exposure to BPA or BFRs was significantly associated with extended length of gestation. Workers were classified with possible or likely exposure to BPA if they held a job title as any kind of plastics operative, while job titles classified as exposed to BFRs were typically textile machine operators, fire service officers, or working as plastic or rubber operatives. In a smaller study (n=219) embedded in the Generation R cohort, BPA in maternal urine was associated with significantly shorter gestational times or reduced fetal growth (Snijder et al. 2013), contradicting our results. However, a biomarker-based birth cohort study (n=488) embedded in the INMA cohort found a small but not significant increase in length of gestation, for mothers with higher levels of BPA in urine during pregnancy (Casas et al. 2015b), supporting our findings. The number of pregnant women with job titles estimated as occupationally exposed to BPA or BFR (n=59 and n=149, respectively) among our sample was small, so these results should be interpreted with caution.

Preterm delivery was not significantly associated with estimated exposure to any EDC group in our study. Previous research regarding EDC exposure and preterm delivery is rare and has yielded conflicting results, with reports of positive, negative, and null associations with length of gestation, not necessarily preterm delivery (Meeker 2012). More research regarding this potential association, specifically among occupationally exposed mothers is needed.

Our study has some important strengths: the harmonized and detailed information about individual maternal characteristics (e.g., parity, country of origin, marital status, education, smoking during pregnancy, and pre-pregnancy height and weight), enabling adjustment for potential confounders across the cohorts; the prospective data collection in most cohorts avoiding recall bias (except BAMSE, Generation XXI, and INMA Granada: Table 1); and the large population spread throughout Europe, including data from the North, East, South and West. Previous studies of maternal occupational exposure to EDCs and associated birth weight and length of gestation have been few and relatively small and are also embedded in the Generation R study (Snijder et al. 2012, 2011). Since many cohorts participated in our study and estimates from all participating cohorts are reported, our design also reduces the potential for publication bias, at least within the European setting. Finally, in our complete case analyses, we believe missing covariates did not influence associations. In minimally adjusted models, associations were consistent among full and complete case populations (see Supplemental Material, Table S7).

In assessing robustness of our findings, we stratified models for maternal education and maternal smoking during pregnancy, common confounders in fetal growth (Abel 1980; Kramer 1987). Associations were stronger among those with no university education and smokers (Table 7), suggesting that potential residual confounding by amount of smoking or other related factors may be present or that such factors aggravate a potential EDC effect, but this was not formally evaluated. Also, the group of exposed mothers with higher education and term LBW was

relatively small (n=39), so this difference may be not be meaningful. This also may have been influenced by missing data, as education was missing for 28% of DNBC cohort. Further, we cannot exclude residual confounding by other factors such as other maternal occupational exposures (long shifts, heavy lifting), living near sources of ambient pollution (highways, landfills), or maternal diet and physical activity during pregnancy (Brauer et al. 2008; Escribaga-Aguir et al. 2001; Hegaard et al. 2007; Rodriguez-Bernal et al. 2010). We would expect these factors to act as confounders if they were also associated with the job titles grouped through the JEM. Most importantly, physically demanding occupations probably overlap with some of the occupations classified as exposed to EDCs, such as hairdressing, agricultural work, and waitressing. However, most of the evidence for heavy lifting relates to significant risk of pre-term birth and not to term LBW (Beukering et al. 2014). Finally, we suspect that almost all pregnant women, employed and non-employed, are exposed to EDCs through diet and consumer products. However, this background level is believed to be much lower than occupational exposure (Nieuwenhuijsen 2003) and hence should not confound the observed associations.

While the JEM is useful for estimating exposure for large populations when it cannot be captured via questionnaires or measurements, it is a tool meant to be used on a similar population during a similar time as that for which it was originally designed. Brouwers et al (Brouwers et al. 2009) created this particular JEM by adapting Van Tongeren's 2002 JEM (Van Tongeren et al. 2002). The Van Tongeren JEM was created for a UK study on workers from 1996-2006 (Van Tongeren et al. 2002). Brouwers and associates adapted this tool to apply to a population of workers in The Netherlands between 2005 and 2007 (Brouwers et al. 2009). Some of our study's population was from The Netherlands and the majority from Northern Europe. For all cohorts in our study, most



occupational data was collected between 1994 and 2013, so the windows of time for which each JEM was developed mostly align with our study population. Therefore, even though it has not been validated across countries, this JEM is the best available option for estimating occupational EDC exposure in this large sample size.

For our study, this JEM was translated from SOC2000 codes to the most relevant ISCO88 codes and this translation was not created with EDC exposure in mind. For example, the SOC2000 job title “Paramedic” was translated to the ISCO88 job title “Medical assistant.” Within the JEM, Paramedics were classified as exposed to PAHs because they spend much of the workday driving. This means that medical assistants in our study were classified as exposed to PAHs, which may not be accurate. With this potential for error, this could be quite magnified over a large study population resulting in broad exposure misclassification. However, we assume that such misclassification is likely to be random (non-differential) with respect to our outcomes, and thus most likely led to attenuation of associations (Blair et al. 2007). Some studies have concluded that, in general, JEM estimates can be improved by integrating actual exposure measurements in the workplace (Teschke et al. 2002). However, it would be a large effort to measure occupational exposure to EDCs in many occupations and many European countries. We must also admit the possibility that not all women worked the same time during pregnancy, therefore duration of exposure and trimesters of exposure likely differed among pregnant women. Further, because translation of Brouwers’ JEM from SOC2000 to ISCO88 codes was only directly applicable to some ISCO88 codes, we had to consult experts to estimate exposure for almost one-third (n=35,999) of the women in our dataset.

## **CONCLUSIONS**

This large-scale prospective study suggests that maternal employment during pregnancy in occupations classified as possibly or probably exposed to EDCs was associated with a significant increased risk of term LBW newborns in cohorts throughout Europe. This finding should be followed-up by studying health outcomes throughout childhood and by focusing more specifically on occupations classified as exposed to multiple EDCs.

## REFERENCES

- Abel EL. 1980. Smoking during pregnancy: a review of effects on growth and development of offspring. *Hum. Biol.* 593–625.
- Al-Saleh I, Shinwari N, Mashhour A, Rabah A. 2014. Birth outcome measures and maternal exposure to heavy metals (lead, cadmium and mercury) in Saudi Arabian population. *Int. J. Hyg. Environ. Health* 217: 205–218.
- Baker WL, Michael White C, Cappelleri JC, Kluger J, Coleman CI, From the Health Outcomes P, and Economics (HOPE) Collaborative Group. 2009. Understanding heterogeneity in meta-analysis: the role of meta-regression. *Int. J. Clin. Pract.* 63:1426–1434; doi:10.1111/j.1742-1241.2009.02168.x.
- Beukering MDM van, Melick MJGJ van, Mol BW, Frings-Dresen MHW, Hulshof CTJ. 2014. Physically demanding work and preterm delivery: a systematic review and meta-analysis. *Int. Arch. Occup. Environ. Health* 87:809–834; doi:10.1007/s00420-013-0924-3.
- Blair A, Stewart P, Lubin JH, Forastiere F. 2007. Methodological issues regarding confounding and exposure misclassification in epidemiological studies of occupational exposures. *Am. J. Ind. Med.* 50:199–207; doi:10.1002/ajim.20281.
- Brauer M, Lencar C, Tamburic L, Koehoorn M, Demers P, Karr C. 2008. A cohort study of traffic-related air pollution impacts on birth outcomes. *Environ. Health Perspect.* 116: 680–686.
- Brouwers MM, Van Tongeren M, Hirst AA, Bretveld RW, Roeleveld N. 2009. Occupational exposure to potential endocrine disruptors: further development of a job exposure matrix. *Occup. Environ. Med.* 66: 607–614.
- Burdorf A, Brand T, Jaddoe VW, Hofman A, Mackenbach JP, Steegers EA. 2011. The effects of work-related maternal risk factors on time to pregnancy, preterm birth and birth weight: the Generation R Study. *Occup. Environ. Med.* 68: 197–204.
- CAMSIS. 2005. UK 2000 SOC to ISCO-88(COM) Social Interaction and Stratification Scale. Available: <http://www.camsis.stir.ac.uk/occunits/uksoc2000toisco88v3.sps>.
- Casas M, Cordier S, Martínez D, Barros H, Bonde JP, Burdorf A, et al. 2015a. Maternal occupation during pregnancy, birth weight, and length of gestation: combined analysis of 13 European birth cohorts. *Scand. J. Work. Environ. Health* 41:384–396; doi:10.5271/sjweh.3500.

- Casas M, Valvi D, Ballesteros-Gomez A, Gascon M, Fernández MF, Garcia-Esteban R, et al. 2015b. Exposure to Bisphenol A and Phthalates during Pregnancy and Ultrasound Measures of Fetal Growth in the INMA-Sabadell Cohort. *Environ. Health Perspect.*; doi:10.1289/ehp.1409190.
- Chevrier C, Limon G, Monfort C, Rouget F, Garlantezec R, Petit C, et al. 2011. Urinary biomarkers of prenatal atrazine exposure and adverse birth outcomes in the PELAGIE birth cohort. *Environ. Health Perspect.* 119: 1034–1041.
- Choi H, Jedrychowski W, Spengler J, Camann DE, Whyatt RM, Rauh V, et al. 2006. International studies of prenatal exposure to polycyclic aromatic hydrocarbons and fetal growth. *Environ. Health Perspect.* 114: 1744–1750.
- Cochran W. 1954. The Combination of Estimates from Different Experiments. *Biometrics* 10:101–129; doi:10.2307/3001666.
- Dadvand P, Parker J, Bell ML, Bonzini M, Brauer M, Darrow LA, et al. 2013. Maternal Exposure to Particulate Air Pollution and Term Birth Weight: A Multi-Country Evaluation of Effect and Heterogeneity. *Environ. Health Perspect.* 121:267–373; doi:10.1289/ehp.1205575.
- De Coster S, van Larebeke N. 2012. Endocrine-Disrupting Chemicals: Associated Disorders and Mechanisms of Action. *J. Environ. Public Health* 2012:e713696; doi:10.1155/2012/713696.
- Dejmek J, Solansky IF, Benes IF, Lenicek J FAU - Sram RJ, Sram RJ. 2000. The impact of polycyclic aromatic hydrocarbons and fine particles on pregnancy outcome. *Environ. Health Perspect.* JID - 0330411.
- Escriba-Aguir V, Perez-Hoyos S, Saurel-Cubizolles MJ. 2001. Physical load and psychological demand at work during pregnancy and preterm birth. *Int. Arch. Occup. Environ. Health* 74: 583–588.
- European Agency for Safety and Health at Work. 2013. Women and Health at Work. Available: [https://osha.europa.eu/en/priority\\_groups/gender/index\\_html](https://osha.europa.eu/en/priority_groups/gender/index_html). [accessed 4 April 2016].
- Gemmill A, FAU GR, Bradman AF, Eskenazi B FAU - Harley G Kim, Harley KG. 2013. Residential proximity to methyl bromide use and birth outcomes in an agricultural population in California. *Environ. Health Perspect.* JID - 0330411.
- Govarts E, Nieuwenhuijsen M, Schoeters G, Ballester F, Bloemen K, de Boer M, et al. 2012. Birth weight and prenatal exposure to polychlorinated biphenyls (PCBs) and

dichlorodiphenyldichloroethylene (DDE): a meta-analysis within 12 European Birth Cohorts. *Environ. Health Perspect.* 120: 162–170.

Grandjean P, Bellinger D, Bergman A, Cordier S, Davey-Smith G, Eskenazi B, et al. 2008. The faroes statement: human health effects of developmental exposure to chemicals in our environment. *Basic Clin. Pharmacol. Toxicol.* 102: 73–75.

Harris R, Bradburn M, Deeks J, et al. 2008. metan: fixed- and random-effects meta-analysis. *The Stata Journal.*

Hegaard HK, Pedersen BK, Bruun Nielsen B, Damm P. 2007. Leisure time physical activity during pregnancy and impact on gestational diabetes mellitus, pre-eclampsia, preterm delivery and birth weight: a review. *Acta Obstet. Gynecol. Scand.* 86:1290–1296; doi:10.1080/00016340701647341.

Higgins JPT, Thompson SG, Deeks JJ, Altman DG. 2003. Measuring inconsistency in meta-analyses. *BMJ* 327:557–560; doi:10.1136/bmj.327.7414.557.

Huang Y, Li J, Garcia JM, Lin H, Wang Y, Yan P, et al. 2014. Phthalate Levels in Cord Blood Are Associated with Preterm Delivery and Fetal Growth Parameters in Chinese Women. *PLoS ONE* 9:e87430; doi:10.1371/journal.pone.0087430.

Kramer MS. 1987. Determinants of low birth weight: methodological assessment and meta-analysis. *Bull. World Health Organ.* 65: 663–737.

Larsen PS, Kamper-Jorgensen M, Adamson A, Barros H, Bonde JP, Brescianini S, et al. 2013. Pregnancy and birth cohort resources in europe: a large opportunity for aetiological child health research. *Paediatr. Perinat. Epidemiol.* 27: 393–414.

Legler J. 2008. New insights into the endocrine disrupting effects of brominated flame retardants. *Chemosphere* 73: 216–222.

Lopez-Espinosa MJ, Murcia M, Iniguez C, Vizcaino E, Llop S, Vioque J, et al. 2011. Prenatal exposure to organochlorine compounds and birth size. *Pediatrics* 128: e127–34.

McLachlan JA, Simpson E, Martin M. 2006. Endocrine disrupters and female reproductive health. *Best Pract. Res. Endocrinol. Metab.* 20: 63–75.

Meeker JD. 2012. Exposure to environmental endocrine disruptors and child development. *Arch. Pediatr. Adolesc. Med.* 166: 952–958.

Nieuwenhuijsen MJ, ed. 2003. *Exposure Assessment in Occupational and Environmental Epidemiology*. Oxford University Press.

- Pedersen M, Giorgis-Allemand L, Bernard C, Aguilera I, Andersen A-MN, Ballester F, et al. 2013. Ambient air pollution and low birthweight: a European cohort study (ESCAPE). *Lancet Respir. Med.* 1:695–704; doi:10.1016/S2213-2600(13)70192-9.
- Philippat C, Mortamais M, Chevrier C, Petit C, Calafat AM, Ye X, et al. 2012. Exposure to phthalates and phenols during pregnancy and offspring size at birth. *Environ. Health Perspect.* 120: 464–470.
- Popendorf W, Donham KJ. 1991. Agricultural Hygiene. In (J.W. & Sonsed. ), *Patty's Industrial Hygiene and Toxicology*, pp. 721–761, Volume 1, Part A, New York.
- Rauch SA, Braun JM, Barr DB, Calafat AM, Khoury J, Montesano AM, et al. 2012. Associations of prenatal exposure to organophosphate pesticide metabolites with gestational age and birth weight. *Environ. Health Perspect.* 120: 1055–1060.
- Rodriguez-Bernal CL, Rebagliato M, Iniguez C, Vioque J, Navarrete-Munoz EM, Murcia M, et al. 2010. Diet quality in early pregnancy and its effects on fetal growth outcomes: the Infancia y Medio Ambiente (Childhood and Environment) Mother and Child Cohort Study in Spain. *Am. J. Clin. Nutr.* 91: 1659–1666.
- Shah D. 2009. Healthy worker effect phenomenon. *Indian J. Occup. Environ. Med.* 13:77–79; doi:10.4103/0019-5278.55123.
- Slama R, Ballester F, Casas M, Cordier S, Eggesbo M, Iniguez C, et al. 2014. Epidemiologic tools to study the influence of environmental factors on fecundity and pregnancy-related outcomes. *Epidemiol. Rev.* 36: 148–164.
- Snijder CA, Brouwers MM, Jaddoe VW, Hofman A, Roeleveld N, Burdorf A. 2011. Occupational exposure to endocrine disruptors and time to pregnancy among couples in a large birth cohort study: the Generation R Study. *Fertil. Steril.* 95: 2067–2072.
- Snijder CA, Heederik D, Pierik FH, Hofman A, Jaddoe VW, Koch HM, et al. 2013. Fetal growth and prenatal exposure to bisphenol A: the generation R study. *Environ. Health Perspect.* 121: 393–398.
- Snijder CA, Roeleveld N, Velde ET, Steegers EA, Raat H, Hofman A, et al. 2012. Occupational exposure to chemicals and fetal growth: the Generation R Study. *Hum. Reprod. Oxf. Engl.* 27: 910–920.
- Sun H, Chen W, Wang D, Jin Y, Chen X, Xu Y. 2014. The effects of prenatal exposure to low-level cadmium, lead and selenium on birth outcomes. *Chemosphere* 108: 33–39.

- Suzuki Y, Niwa M, Yoshinaga J, Mizumoto Y, Serizawa S, Shiraishi H. 2010. Prenatal exposure to phthalate esters and PAHs and birth outcomes. *Environ. Int.* 36: 699–704.
- Tang R, Chen M, Ding G, Chen X, Han X, Zhou K, et al. 2013. Associations of prenatal exposure to phenols with birth outcomes. *Environ. Pollut.* 178: 115–120.
- Teschke K, Olshan AF, Daniels JL, Roos AJD, Parks CG, Schulz M, et al. 2002. Occupational exposure assessment in case-control studies: opportunities for improvement. *Occup. Environ. Med.* 59: 575–93; discussion 594.
- Thompson SG, Sharp SJ. 1999. Explaining heterogeneity in meta-analysis: a comparison of methods. *Stat. Med.* 18:2693–2708; doi:10.1002/(SICI)1097-0258(19991030)18:20<2693::AID-SIM235>3.0.CO;2-V.
- Van Tongeren M, Nieuwenhuijsen MJ, Gardiner K, Armstrong B, Vrijheid M, Dolk H, et al. 2002. A job-exposure matrix for potential endocrine-disrupting chemicals developed for a study into the association between maternal occupational exposure and hypospadias. *Ann. Occup. Hyg.* 46: 465–477.
- Vrijheid M, Casas M, Bergstrom A, Carmichael A, Cordier S, Eggesbo M, et al. 2012. European birth cohorts for environmental health research. *Environ. Health Perspect.* 120: 29–37.
- Wickerham EL, Lozoff B, Shao J, Kaciroti N, Xia Y, Meeker JD. 2012. Reduced birth weight in relation to pesticide mixtures detected in cord blood of full-term infants. *Environ. Int.* 47: 80–85.
- Wohlfahrt-Veje C, Main KM, Schmidt IM, Boas M, Jensen TK, Grandjean P, et al. 2011. Lower birth weight and increased body fat at school age in children prenatally exposed to modern pesticides: a prospective study. *Environ. Health Glob. Access Sci. Source* 10: 79–069X–10–79.
- Wolff MS, Engel SM, Berkowitz GS, Ye X, Silva MJ, Zhu C, et al. 2008. Prenatal phenol and phthalate exposures and birth outcomes. *Environ. Health Perspect.* 116: 1092–1097.
- World Health Organization. WHO | State of the science of endocrine disrupting chemicals - 2012. WHO. Available: <http://www.who.int/ceh/publications/endocrine/en/> [accessed 4 April 2016].
- Zee EC, Cornet P, Lazimi G, Rondet C, Lochard M, Magnier AM, et al. 2013. Impact of endocrine disrupting chemicals on birth outcomes. *Gynecol. Obstet. Fertil.* 41: 601–610.

Zhang Y, Lin L, Cao Y, Chen B, Zheng L, Ge R-S. 2009. Phthalate Levels and Low Birth Weight: A Nested Case-Control Study of Chinese Newborns. *J. Pediatr.* 155:500–504; doi:10.1016/j.jpeds.2009.04.007.

Zhao Y, Shi H, Xie C, Chen J, Laue H, Zhang Y. 2015. Prenatal phthalate exposure, infant growth, and global DNA methylation of human placenta. *Environ. Mol. Mutagen.* 56:286–292; doi:10.1002/em.21916.



Table 1: Description of birth cohorts

Cohort	Location	Time period of enrollment <sup>a</sup>	Maternal occupational history information		N available for analysis	N with history of work and ISCO88 code	N with unclassifiable exposure	N included in analysis <sup>c</sup>
			Time of collection	Period of pregnancy covered				
ABCD	The Netherlands	2003-2004	1st trimester of pregnancy	1st trimester	7,792	5,365	149	5,216
BAMSE	Sweden	1994-1996	Birth	Birth	3,883	3,536	11	3,525
DNBC	Denmark	1996-2002	12th week	1 month before conception and 1st trimester	86,736	70,015	858	69,157
Generation R	The Netherlands	2001-2006	30th pregnancy week	All trimesters until 30th week	6,444	5,207	57	5,150
Generation XXI	Portugal	2005-2006	Birth	All trimesters	7,859	5,994	338	5,656
INMA Granada	Spain	2000-2002	Birth	Birth	497	220	34	186
INMA New <sup>b</sup>	Spain	2004-2008	12th and 32nd weeks	1 month before conception and all trimesters until 32nd week	2,008	1,767	217	1,550
KANC	Lithuania	2007-2009	3rd trimester of pregnancy	1 month before conception and 1st and third trimesters	4,253	3,538	61	3,477
MoBa	Norway	1999-2008	17th pregnancy week	17th pregnancy week	93,891	31,019	827	30,192
NINFEA	Italy	2005-2011	Before maternity leave began	Variable during pregnancy	2,865	2,504	49	2,455
PELAGIE	France	2002-2006	1st trimester of pregnancy	1 month before conception and 1st trimester	3,322	2,918	43	2,875
REPRO PL	Poland	2007-2011	8-12th, 20-24th, and 30-34th weeks	1 month before conception and all trimesters until 30-34th weeks	1,176	996	26	970
RHEA	Greece	2007-2008	1st and 3rd trimesters of pregnancy	1 month before conception and all trimesters	1,111	878	8	870
	Total				221,837	133,957	2,678	131,279

<sup>a</sup>All cohorts enrolled at pregnancy except for BAMSE, Generation XXI, and INMA New, which enrolled at birth.

<sup>b</sup>INMA New cohorts included the regions of Gipuzkoa, Sabadell, and Valencia.

<sup>c</sup>N's represent mothers with exposure and outcome data.

Table 2: Chemical groups and subgroups of substances with endocrine disrupting potential that were used in the Brouwers 2009 job exposure matrix

Chemical group	Subgroups
Polycyclic aromatic hydrocarbons	None
Polychlorinated organic compounds	Polychlorinated biphenyls Dioxins, furans, polychlorinated naphthalene Hexachlorobenzene Octachlorostyrene
Pesticides	Organochlorines Carbamates Organophosphates Tributyltin Pyrethroids Other pesticides
Phthalates	Di-2-ethylhexyl phthalate, di-isononyl phthalate, di-n-hexyl phthalate Benzyl butyl phthalate Dibutyl phthalate Diethyl phthalate
Organic solvents	Ethylene glycol ethers Styrene Toluene Xylene Trichloroethylene Perchloroethylene
Bisphenol A	None
Alkylphenolic compounds	Alkylphenolic ethoxylates Alkylphenols
Brominated flame retardants	Tetrabromobisphenol A Hexabromocyclodecane Polybrominated bisphenyl ethers
Metals	Arsenic Cadmium Copper Lead Mercury
Miscellaneous	Benzophenones Parabens Siloxanes

Table 3: Application of a job exposure matrix and input of experts' proxy codes<sup>a</sup>

JEM Score	Direct CAMSIS SOC2000 to ISCO88 translation available	Experts assigned proxy ISCO88 code	Total
0, 1, or 2	95,280	35,999	131,279
88	2,585	93	2,678
Total	97,865	36,092	133,957

Score key: 0 Exposure is unlikely to occur; 1 Exposure is possible for some workers but probability is low; 2 Exposure is likely to occur; 88 Job title provides too little information to classify exposure.

<sup>a</sup>N's represent mothers with exposure and outcome data

Table 4: Distribution [mean  $\pm$  SD or percent] of birth outcomes by cohorts<sup>a,b</sup>

Outcomes	ABCD	BAMSE	DNBC	Generation R	Generation XXI	INMA Granada	INMA New	KANC	MoBa	NINFEA	PELAGIE	REPRO PL	RHEA	Total
Birth weight (g)	3,451	3,557	3,592	3,454	3,194	3,298	3,244	3,489	3,604	3,214	3,390	3,368	3,156	3,541
mean $\pm$ SD	$\pm$ 562	$\pm$ 537	$\pm$ 561	$\pm$ 545	$\pm$ 480	$\pm$ 443	$\pm$ 486	$\pm$ 540	$\pm$ 553	$\pm$ 522	$\pm$ 486	$\pm$ 461	$\pm$ 488	$\pm$ 561
missing (n)	24	0	369	10	97	1	10	0	14	0	1	0	14	540
Gestational length (weeks)	39.8	39.9	40	39.9	38.8	39.3	39.6	39.3	39.6	39.4	39.9	39.5	38.5	39.8
mean $\pm$ SD	$\pm$ 1.8	$\pm$ 1.9	$\pm$ 1.7	$\pm$ 1.7	$\pm$ 1.7	$\pm$ 1.5	$\pm$ 1.7	$\pm$ 1.7	$\pm$ 1.8	$\pm$ 2.1	$\pm$ 1.6	$\pm$ 1.5	$\pm$ 1.6	$\pm$ 1.8
missing (n)	0	0	0	1	28	2	4	0	0	2	0	1	196	234
Term low birth weight <sup>c</sup> , n (%)	84 (1.7)	27 (0.8)	624 (0.9)	89 (1.8)	194 (3.7)	4 (2.2)	42 (2.8)	47 (1.4)	201 (0.7)	77 (3.4)	32 (1.2)	18 (1.9)	44 (5.6)	1,483 (1.2)
Preterm birth, n (%)	271 (5.2)	170 (4.8)	3,036 (4.4)	238 (4.6)	407 (7.2)	8 (4.4)	68 (4.4)	190 (5.5)	1,358 (4.5)	166 (6.8)	99 (3.4)	43 (4.4)	87 (12.9)	6,141(4.7)
missing (n)	0	0	0	1	28	2	4	0	0	2	0	1	196	234
Total (n)	5,216	3,525	69,157	5,150	5,656	186	1,550	3,477	30,192	2,455	2,857	970	870	131,279

Abbreviations: g, grams; SD, standard deviation.

<sup>a</sup>Frequencies and percentages were calculated for categorical variables whereas mean and SD were calculated for continuous variables.

<sup>b</sup>N's represent mothers with exposure and outcome data.

<sup>c</sup>For term LBW, preterm births (n=6,141) are excluded from analysis

Table 5. Maternal occupational exposure to endocrine-disrupting chemical groups during pregnancy by cohorts as classified by application of a job exposure matrix to job titles [n (%)]<sup>a</sup>

Cohort	ABCD	BAMSE	DNBC	Generation R	Generation XXI	INMA Granada	INMA New	KANC	MoBa	NINFEA	PELAGIE	REPRO PL	RHEA	Total
Total	5,216	3,525	69,157	5,150	5,656	186	1,550	3,477	30,192	2,455	2,875	970	870	131,279
No occupational EDC exposure	4715 (90.4)	3116 (88.4)	61124 (88.4)	4573 (88.8)	4731 (83.7)	140 (75.3)	1126 (72.7)	3092 (88.9)	27579 (91.4)	2300 (93.7)	2402 (83.6)	851 (87.7)	609 (70.0)	116,358 (88.6)
Exposed to ≥ 1 EDC group	501 (9.6)	409 (11.6)	8,033 (11.6)	577 (11.2)	925 (16.4)	46 (24.7)	424 (27.4)	385 (11.1)	2,613 (8.7)	155 (6.3)	473 (16.5)	119 (12.3)	261 (30.0)	14,921 (11.4)
1-3 EDC groups	435 (8.3)	336 (9.5)	6470 (9.4)	492 (9.6)	907 (16.0)	25 (13.4)	360 (23.2)	332 (9.6)	1990 (6.6)	139 (5.7)	362 (12.6)	85 (8.8)	117 (13.5)	12,050 (9.2)
4 or + EDC groups	66 (1.3)	73 (2.1)	1563 (2.3)	85 (1.7)	18 (0.3)	21 (11.3)	64 (4.1)	53 (1.5)	623 (2.1)	16 (0.7)	111 (3.9)	34 (3.5)	144 (16.6)	2,871 (2.2)
PAH	159 (3.3)	52 (1.5)	1074 (1.7)	291 (6.0)	43 (0.9)	9 (6.0)	70 (5.9)	125 (3.9)	404 (1.4)	25 (1.1)	41 (1.7)	15 (1.7)	39 (6.0)	2,347 (2.0)
Polychlorinated organic compounds	1 (0.0)	4 (0.1)	137 (0.2)	0	11 (0.2)	0	7 (0.6)	3 (0.1)	14 (0.1)	1 (0.0)	3 (0.1)	1 (0.1)	1 (0.2)	183 (0.2)
Pesticides	18 (0.5)	2 (0.5)	440 (1.8)	31 (1.5)	18 (0.7)	18 (11.4)	12 (1.6)	24 (0.9)	551 (2.7)	39 (1.8)	68 (4.5)	7 (1.7)	18 (16.6)	2,409 (2.0)
Phthalates	13 (1.5)	15 (2.3)	750 (2.6)	42 (1.9)	14 (0.8)	22 (13.6)	8 (5.6)	9 (1.9)	213 (2.2)	2 (0.7)	51 (4.6)	9 (3.8)	104 (19.3)	3,004 (2.5)
Organic solvents	260 (5.2)	245 (7.3)	4581 (7.0)	197 (4.1)	486 (9.3)	26 (15.7)	303 (21.2)	151 (4.7)	1240 (4.3)	59 (2.5)	297 (11.0)	63 (6.9)	192 (24.0)	8100 (6.5)
BPA	0	1 (0.0)	35 (0.1)	0	0	0	10 (0.9)	3 (0.1)	0	1 (0.0)	7 (0.3)	2 (0.2)	0	59 (0.1)
APC	187 (3.8)	148 (4.5)	3006 (4.7)	130 (2.8)	760 (13.8)	30 (17.7)	251 (18.2)	123 (3.8)	1047 (3.7)	29 (1.2)	271 (10.1)	43 (4.8)	187 (23.5)	6212 (5.1)
BFR	1 (0.0)	1 (0.0)	41 (0.1)	0	59 (1.2)	2 (1.4)	13 (1.1)	3 (0.1)	14 (0.1)	1 (0.0)	9 (0.4)	4 (0.5)	1 (0.2)	149 (0.1)
Metals	78 (1.6)	126 (3.9)	2756 (4.3)	99 (2.1)	457 (8.8)	17 (10.8)	72 (6.0)	101 (3.2)	641 (2.3)	37 (1.6)	131 (5.2)	54 (6.0)	116 (16.0)	4685 (3.9)
Miscellaneous chemicals	58 (1.2)	58 (1.8)	826 (1.3)	46 (1.0)	0	9 (6.0)	55 (4.7)	47 (1.5)	410 (1.5)	14 (0.6)	61 (2.5)	23 (2.6)	40 (6.2)	1647 (1.4)

Abbreviations: APCs: alkylphenolic compounds; BFRs: brominated flame retardants; BPA: bisphenol A; EDC: Endocrine disrupting chemicals; PAHs: Polycyclic aromatic hydrocarbons.

<sup>a</sup>N's represent mothers with exposure and outcome data.

Table 6. Maternal occupational exposures to EDC groups during pregnancy as classified by a job exposure matrix and meta-analyzed associations (95%CI) with birth weight and length of gestation<sup>a</sup>

Exposure <sup>c</sup>	Birth weight (g) β (95% CI)	Term LBW <sup>b</sup>		Length of gestation (days) β (95% CI)	Preterm delivery	
		Cases	OR (95% CI)		Cases	OR (95% CI)
No occupational EDC exposure	reference	1,252	reference	reference	5,407	reference
Exposed to ≥ 1 EDC group						
1-3 EDC groups	-6.16 (-14.84, 2.51)	231	1.25 (1.04, 1.49)*	0.11 (-0.13, 0.35)	734	0.97 (0.88, 1.07)
4 or + EDC groups	-8.03 (-17.47, 1.41)	189	1.25 (1.03, 1.52)*	0.15 (-0.11, 0.42)	577	0.96 (0.86, 1.06)
PAHs	0.32 (-18.68, 19.32)	42	2.11 (1.10, 4.06) <sup>d*</sup>	-0.05 (-0.58, 0.47)	157	1.10 (0.90, 1.35)
PCBs	-14.49 (-35.08, 6.09)	57	1.62 (1.12, 2.34)*	0.42 (-0.15, 0.99)	105	0.92 (0.73, 1.17)
Pesticides	54.95 (-18.09, 128.00)	0	-	-0.04 (-3.51, 3.43) <sup>d</sup>	9	1.10 (0.48, 2.54)
Phthalates	1.23 (-18.98, 21.44)	33	1.85 (1.15, 2.98)*	0.01 (-1.05, 1.03) <sup>d</sup>	119	0.99 (0.78, 1.24)
Organic solvents	-9.86 (-38.40, 18.69) <sup>d</sup>	45	2.35 (1.16, 4.75) <sup>d*</sup>	-0.02 (-0.53, 0.50)	165	1.10 (0.90, 1.34)
BPA	-9.90 (-21.45, 1.66)	118	1.24 (0.97, 1.60)	0.05 (-0.27, 0.37)	420	1.05 (0.92, 1.18)
APCs	-66.62 (-184.16, 50.92)	3	-	3.89 (0.71, 7.07)*	1	-
BFRs	-8.03 (-21.45, 5.38)	112	1.33 (1.02, 1.74)*	-0.09 (-0.62, 0.44) <sup>d</sup>	357	1.12 (0.98, 1.29)
Metals	-43.48 (-117.70, 30.75)	5	3.88 (1.37, 11.02)*	2.77 (0.65, 4.89)*	6	0.92 (0.28, 3.03)
Miscellaneous	-6.39 (-20.99, 8.21)	72	1.53 (1.13, 2.07)*	0.24 (-0.17, 0.64)	236	0.96 (0.81, 1.13)
	2.59 (-21.92, 27.10)	21	1.78 (0.61, 5.26) <sup>d</sup>	-0.31 (-0.99, 0.37)	88	1.17 (0.90, 1.51)

Abbreviations: APCs: alkylphenolic compounds; BFRs: brominated flame retardants; BPA: bisphenol A; EDC: Endocrine disrupting chemicals; LBW: low birth weight; PAHs: Polycyclic aromatic hydrocarbons; PCBs, polychlorinated organic compounds.

\* $p < 0.05$

<sup>a</sup>For all models 116,358 unexposed mothers are used as reference group. All complete case models are adjusted for maternal age, parity, maternal education, maternal smoking, maternal BMI, marital status, sex of newborn, and race and gestational age, where applicable.

<sup>b</sup>For term LBW, preterm births (n=6,141) are excluded from analysis.

<sup>c</sup>N's represent mothers with exposure and outcome data.

<sup>d</sup>Heterogeneity existed among cohorts (Cochran's  $Q$  test  $p < 0.05$  and/or  $I^2 \geq 25\%$ ), weights are from random effects analysis.

-Blank cells indicate there were less than 5 exposed cases overall and meta-analysis was not completed

Table 7. Stratified meta-analyses of maternal occupational exposure to one or more EDC group as classified by a job exposure matrix and odds ratios for term LBW<sup>a,b</sup>

Stratification	Total unexposed (n <sup>c</sup> )	Exposed to one or more EDC group (n <sup>c</sup> )	Term LBW cases exposed (n <sup>c</sup> )	OR for Term LBW
Overall	110,951	14,187	231	1.25 (1.04, 1.49)*
Sex of newborn				
Male	56,590	7,240	95	1.36 (1.02, 1.81)*
Female	54,355	6,946	136	1.24 (0.97, 1.58) <sup>d</sup>
missing	6	1	0	
Maternal education				
Low (primary or secondary only)	34,602	7,190	146	1.32 (1.06, 1.64)*
High (university or higher)	59,450	4,572	39	1.24 (0.87, 1.77)
missing	16,899	2,425	46	
Maternal smoking during pregnancy <sup>e</sup>				
Yes	19,964	3,453	97	1.38 (1.01, 1.87)*
No	85,342	10,218	126	1.18 (0.93, 1.50)
missing	5,645	516	8	

Abbreviations: CI, confidence interval; EDC, endocrine-disrupting chemical; LBW, low birth weight; OR, odds ratio.

\*p<0.05

<sup>a</sup>For all complete case models, 110,951 unexposed mothers are used as reference group. All models are adjusted for maternal age, parity, maternal education, maternal smoking, maternal BMI, marital status, sex of newborn, and race and gestational age.

<sup>b</sup>For term LBW, preterm births (n=6,141) are excluded from analysis.

<sup>c</sup>N's represent subjects with exposure and outcome data.

<sup>d</sup>Heterogeneity existed among cohorts (Cochran's *Q* test p<0.05 and/or *I*<sup>2</sup>≥25%).

<sup>e</sup>Yes category of smoking included any maternal smoking during pregnancy.

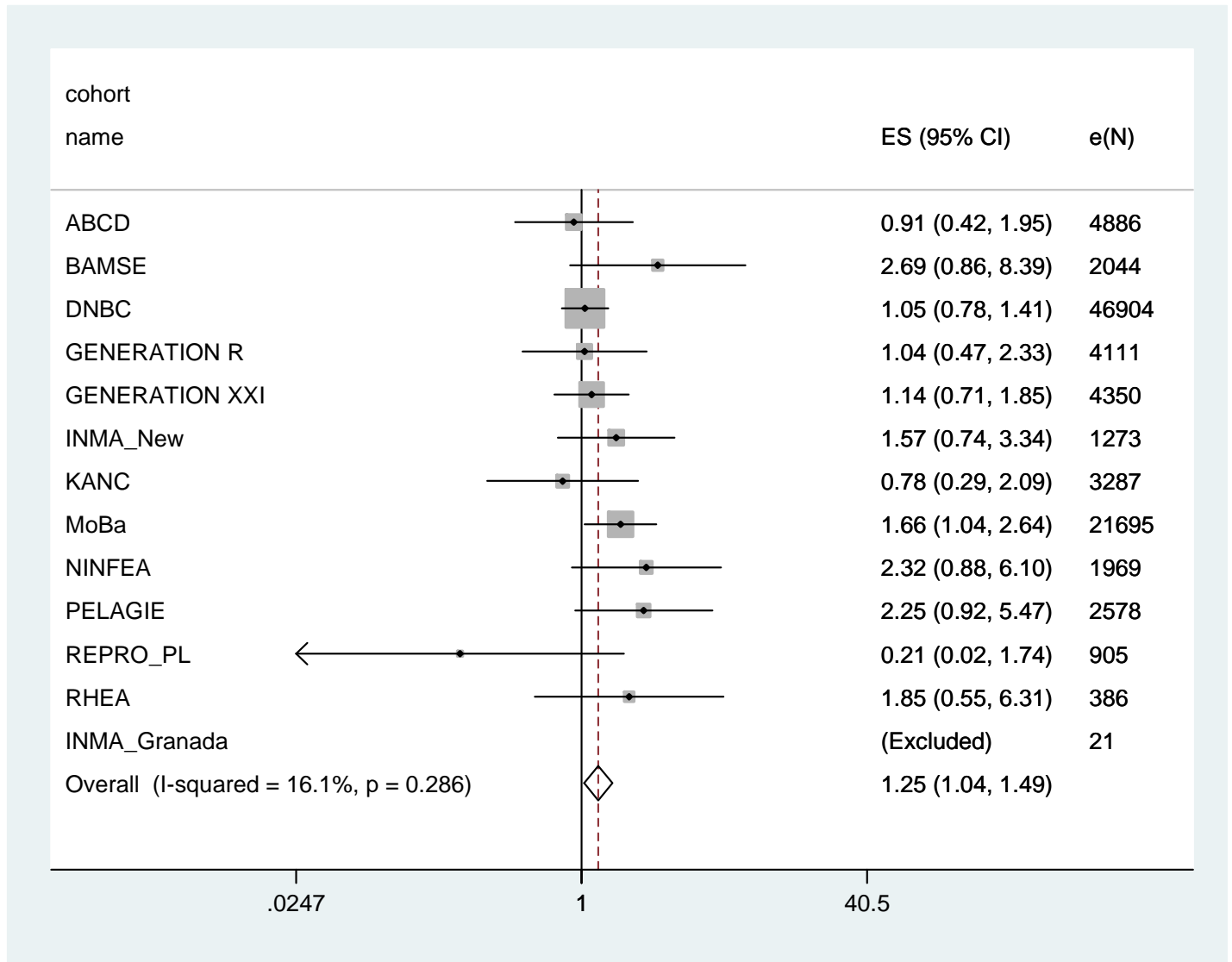


Figure 1. Meta-analysis of odds ratios for term low birth weight for pregnant women occupationally exposed to one or more endocrine-disrupting chemical group as classified by a job exposure matrix.

N's represent subjects included in complete case analysis.

INMA Granada was excluded from analysis as there were no cases of term low birth weight for exposed mothers.

All models are adjusted for maternal age, parity, maternal education, maternal smoking, maternal BMI, marital status, sex of newborn, and race and gestational age, where applicable.

Unexposed mothers are used as reference group.

Shaded boxes around the point estimates indicate the weight of the study-specific estimate.