

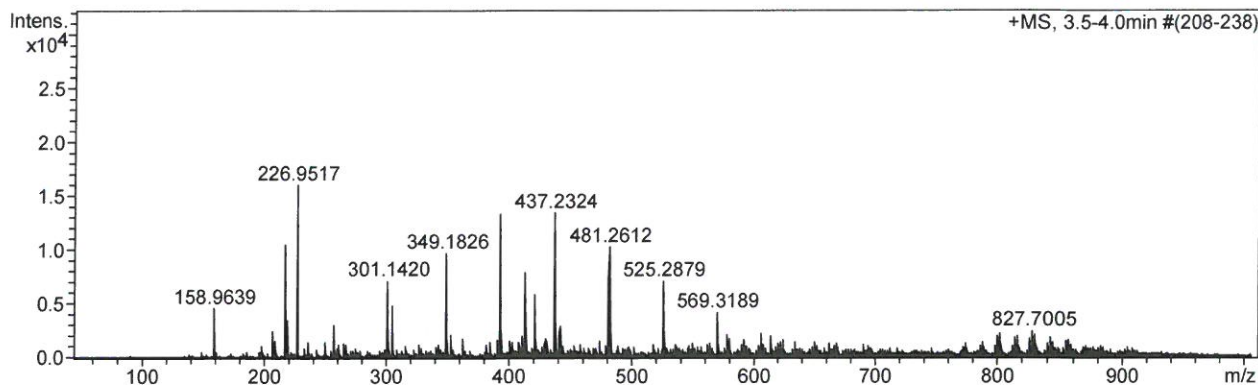
# Mass Spectrum SmartFormula Report

## Analysis Info

Analysis Name C:\Users\amlab\Desktop\Kilian\KC-5-PhSBnCy-mgcl2000001.d  
Method Tune\_low\_pos.m  
Sample Name PhSBnCy-mgcl2  
Comment  
Acquisition Date 2017-03-02 14:34:36  
Operator Carin Larsson  
Instrument / Ser# microTOF 125

## Acquisition Parameter

Source Type ESI Ion Polarity Positive Set Nebulizer 0.3 Bar  
Focus Not active Set Dry Heater 180 °C  
Scan Begin 50 m/z Set Capillary 4500 V Set Dry Gas 4.0 l/min  
Scan End 1000 m/z Set End Plate Offset -500 V Set Divert Valve Source



Meas. m/z	#	Formula	Score	m/z	err [mDa]	err [ppm]	mSigma	rdb	e <sup>-</sup> Conf	N-Rule
283.1490	1	C 19 H 23 S	100.00	283.1515	2.5	8.8	492.8	8.5	even	ok

