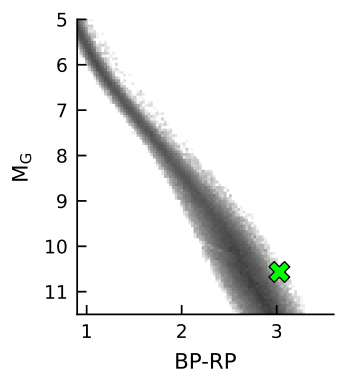
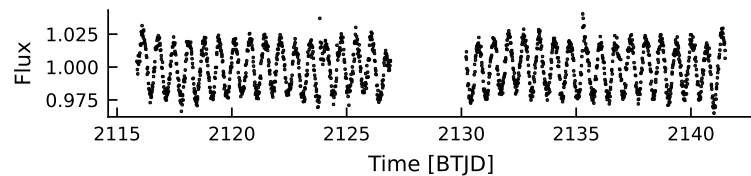
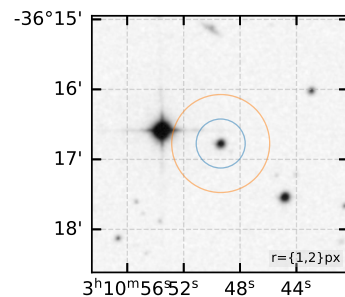
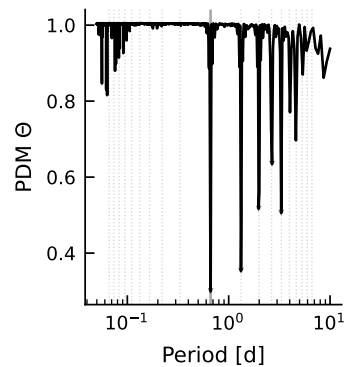
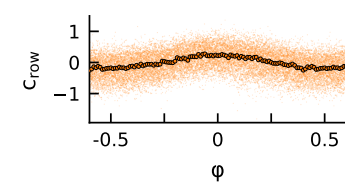
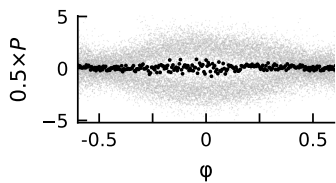
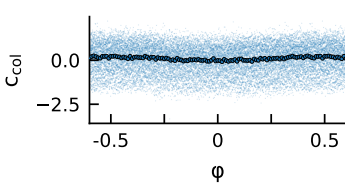


2xP

ϕ



TIC 165184400
 GDR2 5046815924054174848
 SEC30, CAM2, CCD2

—
 $\alpha=47.71$, $\delta=-36.28$ (deg)
 $\mu_{\alpha}=93.8$, $\mu_{\delta}=-20.9$ (mas/yr)
 $T=12.4$
 $TIC8$ Teff=3170 K
 $G=13.7$, $RP=12.5$, $BP=15.5$
 $BP-RP=3.03$
 $RUWE=1.14$
 $plx=23.16 \pm 0.05$ mas
 $d=43.2$ pc

—
 $N_{dip}=0$
 $P2P=0.0\%$
 $\delta_{thresh}=0.1\%$
 $\phi=[]$

—
 $N_{nbhr}=0$

prob
 THA 0.9868
 COL 0.0068
 CAR 0.0056
 FIELD 0.0007