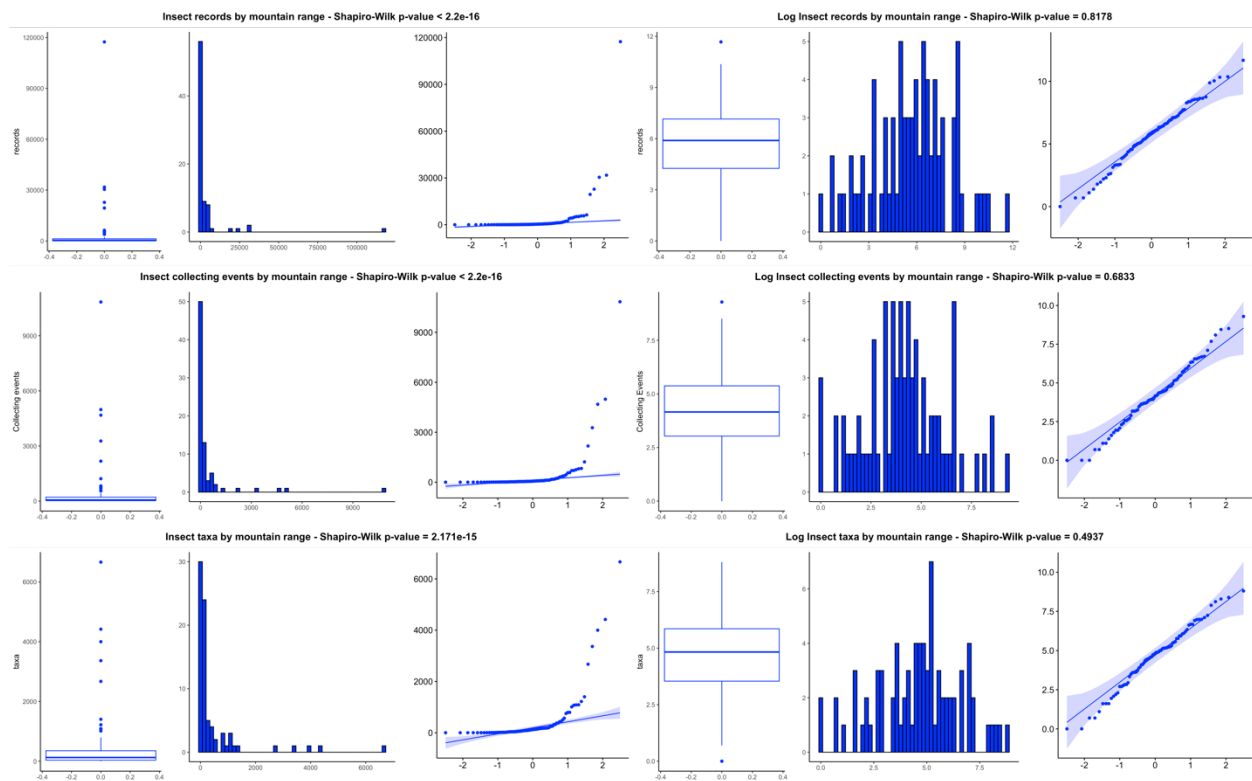


Additional analyses for normality and log-transformed data

Normality was assessed for each dataset for mountain ranges and ecoregions. A Shapiro-Wilk test was performed (significant p-value meaning the dataset differs from a normal distribution) along with a box plot, histogram, and plotting of residuals. These are represented in the graphs below:



Additional plots of log transformed data by ecoregion and mountain range area:

