

# The "Digital Landscape in Greece" Web Survey

This poster aims to highlight some of the results of a (still in progress) research on current trends in digital work practices in the Humanities and Social Sciences in Greece, conducted by the project "Digital Landscape" in collaboration with APOLLONIS Infrastructure[1] and its two components, CLARIN:EL[2] and DARIAH-GR/DYAS[3]. Here we present some preliminary findings, focusing mostly on the impact of the pandemic on said practices and the participants' expectations from RIs.

## AUTHORS

Maria Ilvanidou,<sup>1,2</sup> Vicky Dritsou,<sup>1,2</sup>  
Maria Gavrilidou,<sup>3</sup> Kanella Pouli,<sup>3</sup>  
Yorgos Tzedopoulos,<sup>4</sup> Irakleitos Souyioultzoglou<sup>4</sup>

## AFFILIATIONS

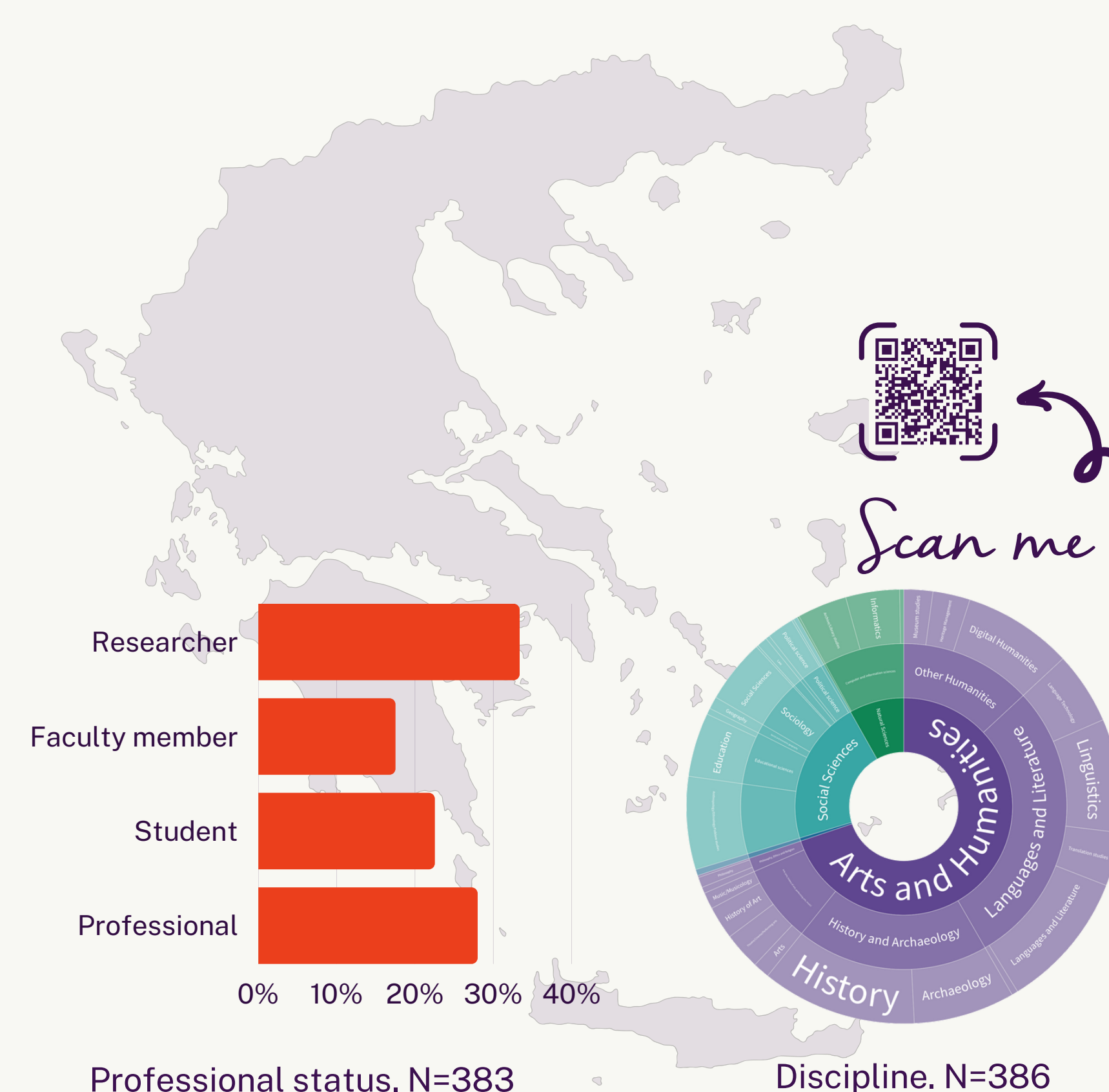
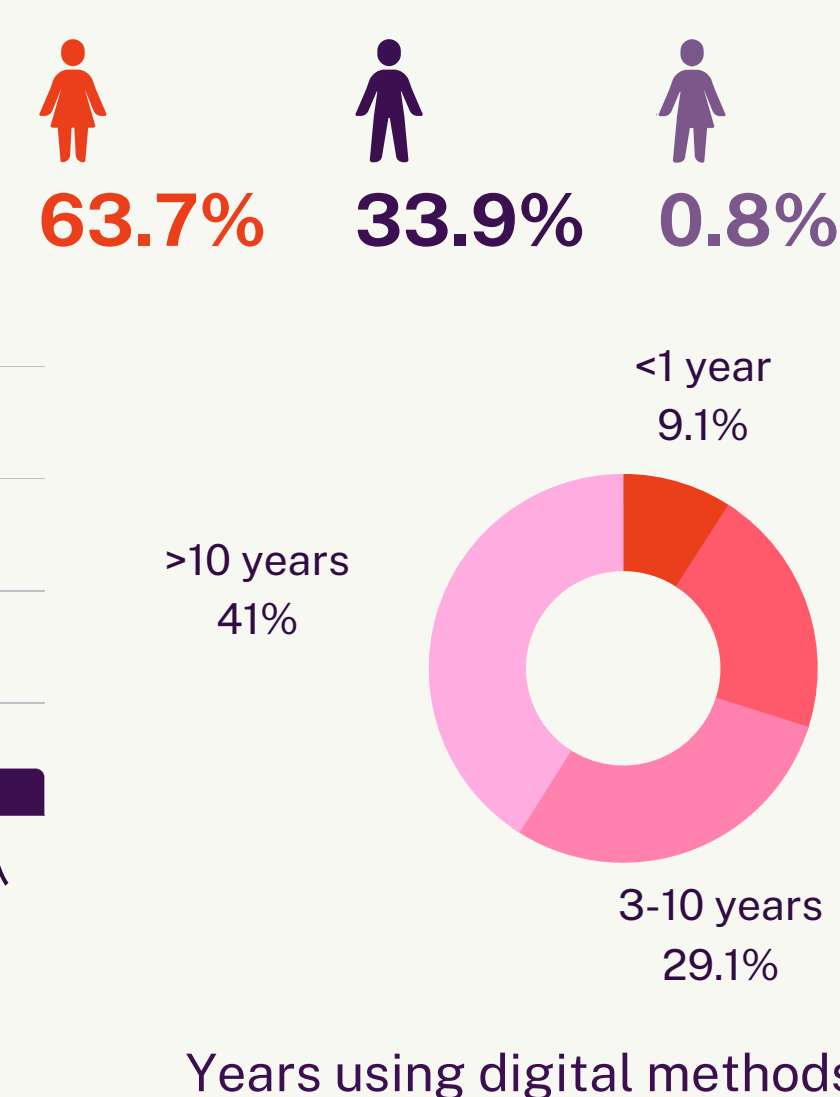
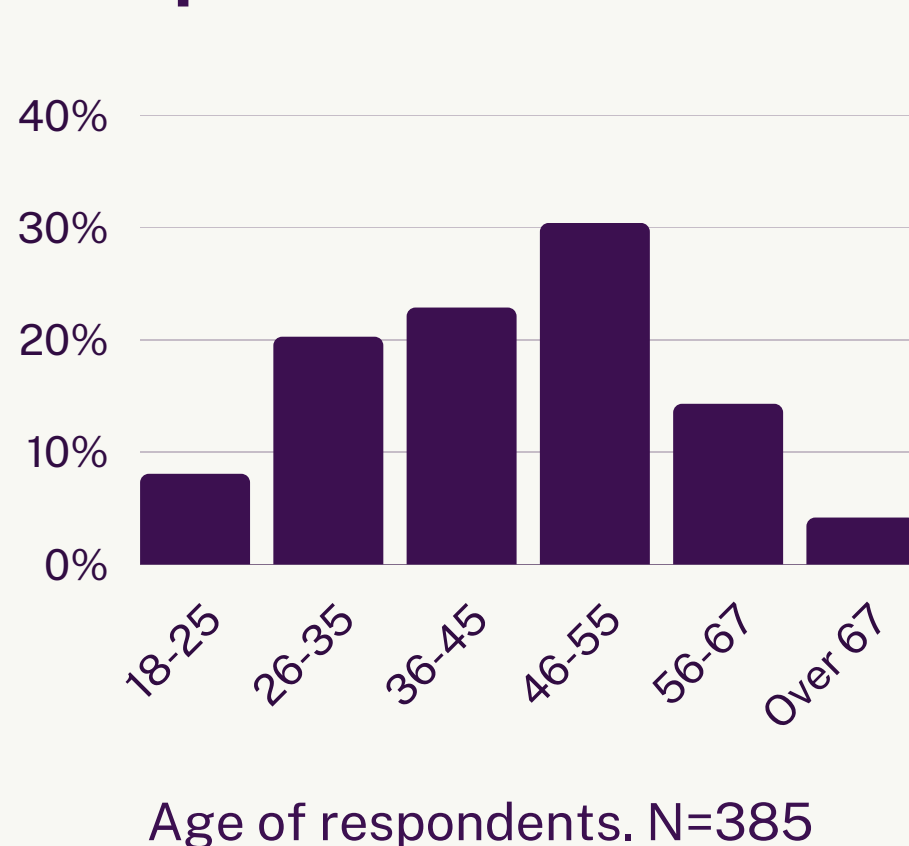
<sup>1</sup> Digital Curation Unit, Information Management Systems Institute, Athena RC, Greece  
<sup>2</sup> Department of Informatics, Athens University of Economics and Business, Greece  
<sup>3</sup> Institute for Language and Speech Processing, Athena RC, Greece  
<sup>4</sup> Academy of Athens, Greece

## INTRODUCTION

Funded by the Hellenic Foundation for Research and Innovation (HFRI), the project "Digital Landscape"[4] is surveying the ways of working in the Humanities and Social Sciences in Greece, including the impact of the pandemic, to better understand current trends and needs, and plan effectively for the future. To this end we carried out a web survey and six focus groups targeted to the Humanities and Social Sciences research communities of Greece. Here we present some of the findings of the survey conducted between Oct. 2022 and Feb. 2023, in which we gathered data on digital research practices, tools and scholarly activities, paying special attention to the impact of COVID-19 on DH research and practice.

## SAMPLE DEMOGRAPHICS

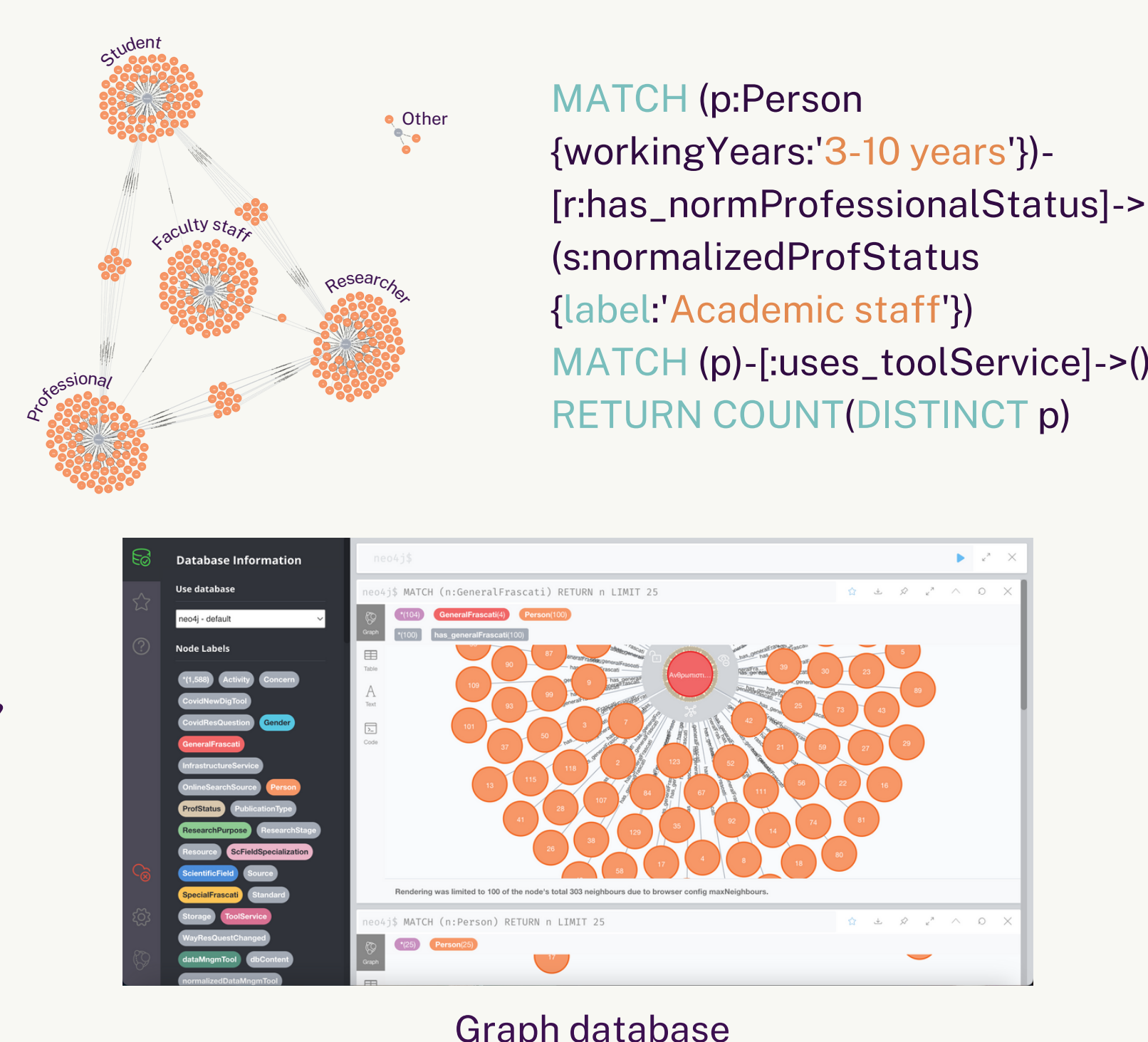
**387**  
Respondents



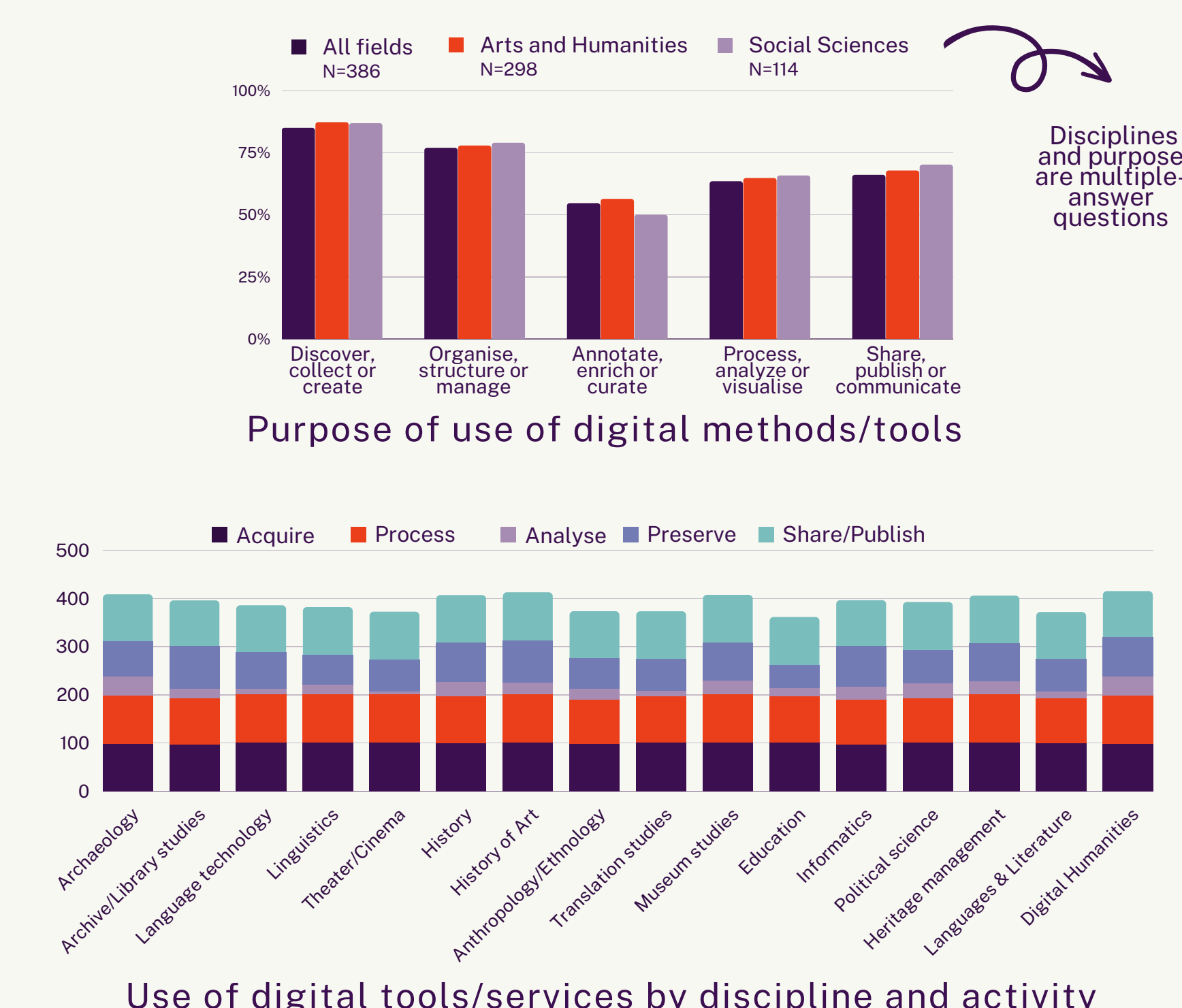
## METHODOLOGY

- Questionnaire design taking into consideration previous related work[5]
- Web survey implementation (Google Forms)
- Data collection
- Data processing:
  - Filtering, cleaning and normalisation of free-form text responses (Google sheets, OpenRefine, Voyant Tools, ILSP Lemmatizer)
  - Questions grouped into the research data lifecycle[6]
  - Design and implementation of a graph database (Neo4j)
  - Data retrieval from the graph (Cypher, CSV)
- Data analysis (Google Sheets, MS Excel)
- Visualization (Canva, Flourish, Looker Studio, Voyant Tools)
- Publication of both the report and the data

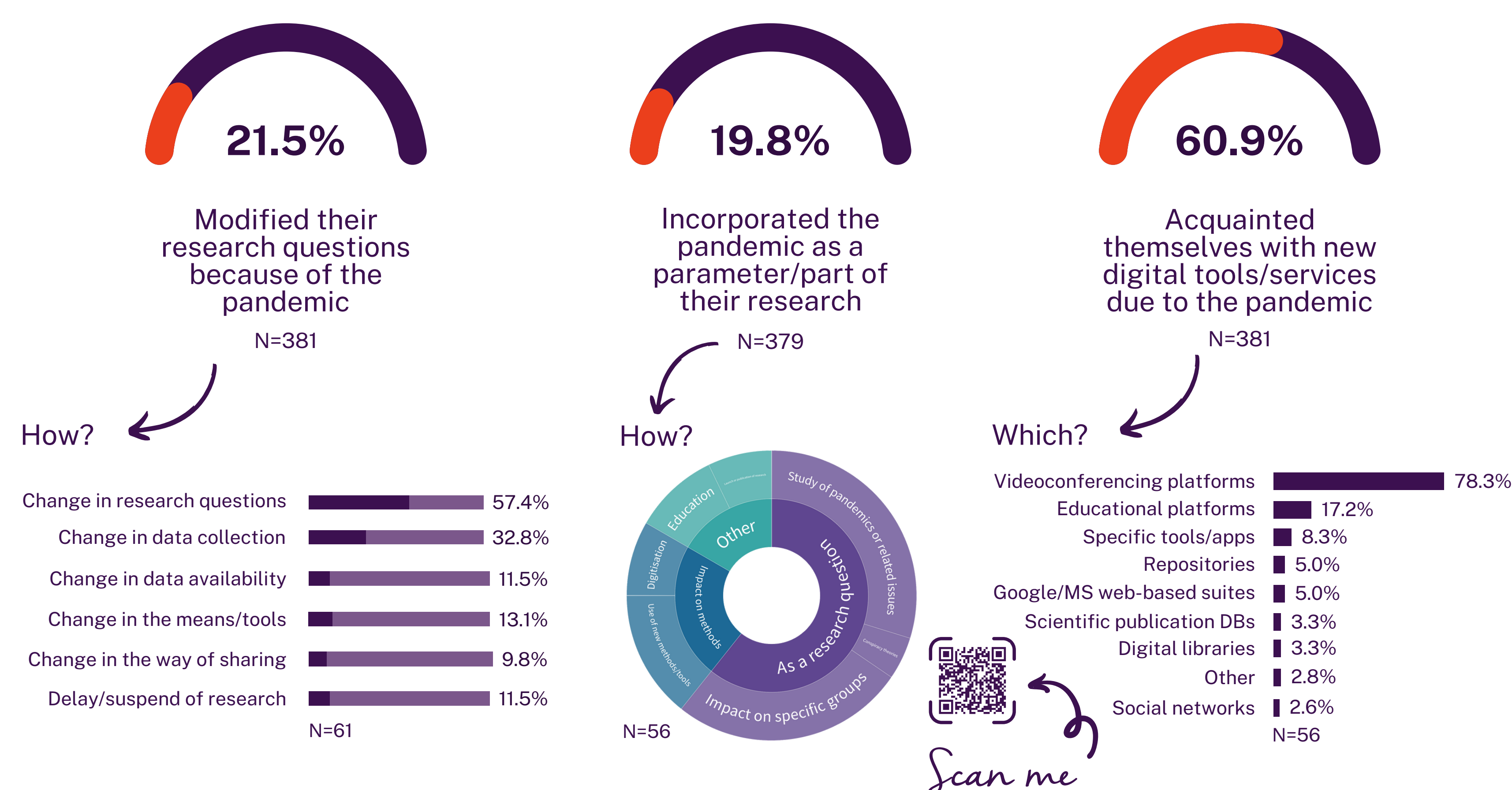
## KNOWLEDGE GRAPH



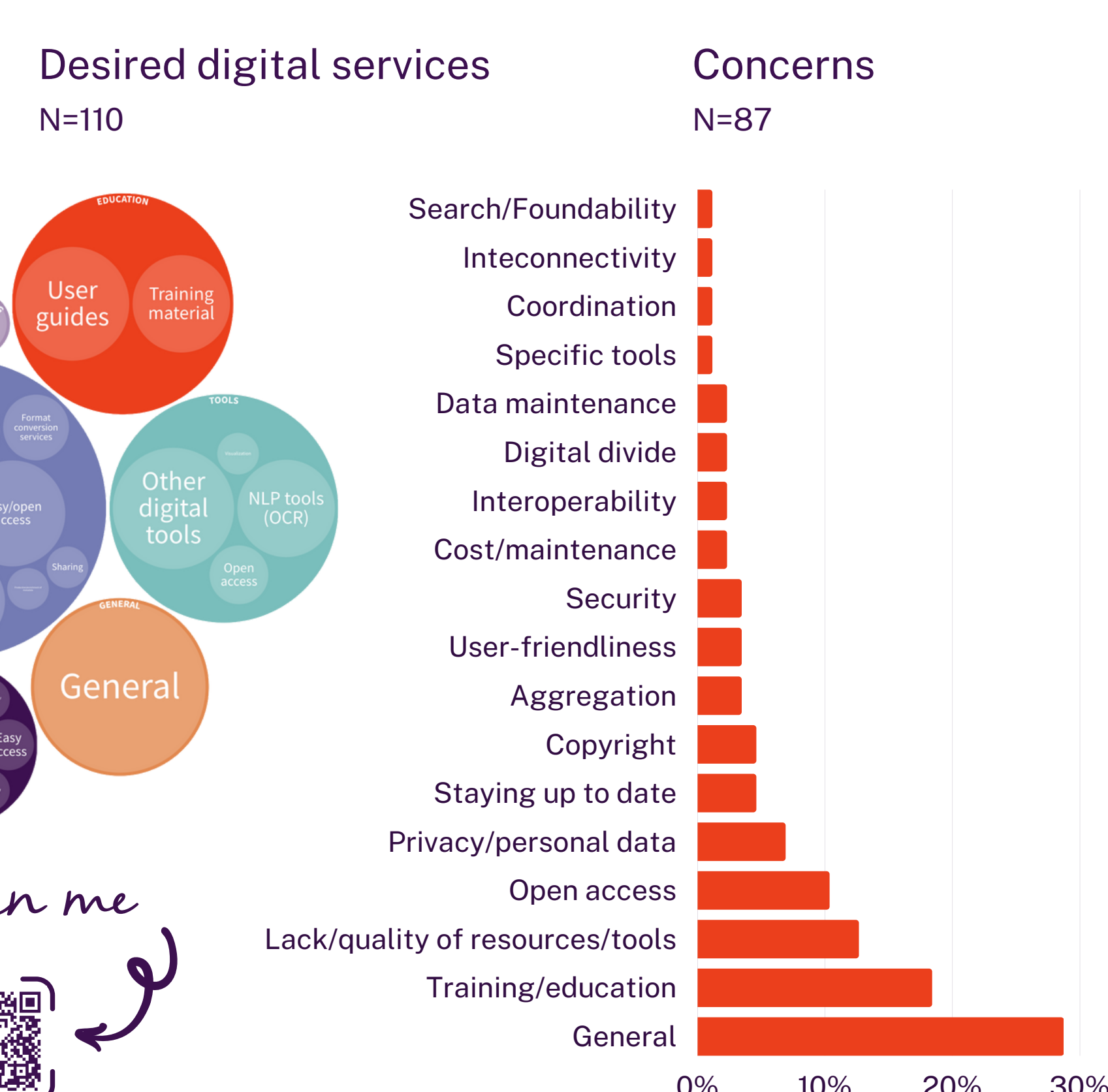
## RESEARCH DATA LIFECYCLE



## IMPACT OF THE PANDEMIC



## EXPECTATIONS & CONCERNS



## COMPARISON & RECOMMENDATIONS

Comparisons to data from previous relevant surveys will be carried out and will be taken in consideration in identifying current trends, while the report resulting from the analysis will be used to support the strategic vision and inform the future planning of the APOLLONIS research infrastructure.

## REFERENCES

- [\[1\] https://apollonis-infrastructure.gr/](https://apollonis-infrastructure.gr/)
- [\[2\] https://www.clarin.gr/en](https://www.clarin.gr/en)
- [\[3\] https://dyas-net.gr/](https://dyas-net.gr/)
- [\[4\] https://digital-landscape.gr/](https://digital-landscape.gr/)
- DARIAH-GR/DYAS Feasibility study (2011); Report on CLARIN:EL users questionnaire (2018) (Internal report); Dallas, C. and Chatzidiakou, N. (Eds) (2022). *European survey on scholarly practices and digital needs in the human sciences*. Zenodo. <https://doi.org/10.5281/zenodo.6583037>
- The Research Data Lifecycle, University of Reading, Research Services. <https://www.reading.ac.uk/research-services/research-data-management/about-research-data-management/the-research-data-lifecycle>