



## Road Traffic Accidents and Emergency Health Services of Rescue 1122: A Case Study of Bahawalpur City

Muhammad Zafarullah<sup>1</sup>, Rana Muhammad Shahid Yaqub<sup>2</sup>, Jahanzaib Safdar Butt<sup>3</sup>, Hassan Mujtaba Nawaz Saleem<sup>4</sup>

### Abstract

The nineteenth reason on the list of leading causes of death worldwide is road traffic accidents (RTA). Every year, road traffic accidents cost the global economy \$518 billion in lost revenue, with developing countries footing the bill for 65 billion dollars. As per World Health Organization (WHO), RTAs kill 1.25 million people and injure 20 to 40 million people worldwide. The present study aims to gain a comprehensive picture of the city of Bahawalpur's traffic accident statistics from 2017-21. Data were collected for this study from Rescue-1122. Each accident site was geocoded, and the data were enhanced, filtered, and organized. Hotspot analysis could help us better understand the causes of road traffic accidents in Bahawalpur. There were 41744 RTAs throughout five years. There were 42313 victims, 82% of whom were men and 18% of whom were women. The motorbike was the most frequently involved vehicle type," accounting for 21% of all collisions involving people between 21 to 30. A high number of accidents occurred in the eastern part of the city at all times due to the dense road network, congested infrastructure, and increased population. More accidents occur between 08:00 am to 04:00 pm on Sunday to Wednesday during the week and in March and October than in any other period due to good visibility. Due to this, the number of road traffic accidents has increased slightly over the years. The accessibility analysis shows that Rescue 1122 key centers offer services to 326,750 people living within 5 to 15 minutes of travel time and 252,000 people living between 15 to 30 minutes of journey time. Due to many populations relying on their services, Rescue 1122 must boost its emergency health services to help those injured in traffic accidents.

**Keywords:** RTAs, Hotspot Analysis, Emergency Health Services, Bahawalpur, Rescue-1122

### 1. Introduction

Road traffic accidents (RTAs) are becoming a bigger problem and are one of the top causes of death and illness around the world (Nazeer, Mohsin, & Rehman, 2021). Road Accidents happen when people don't follow traffic laws and hit other vehicles, pedestrians, or roadside signs and billboards. Road accidents have become a major social and economic problem because they cause deaths, injuries, and huge health problems (Heydari, 2014; Pan, 2014; Perrot, 2014). Road traffic accidents (RTAs) are a major cause of regional and global disease burden and are getting worse. Nearly 1.3 million people die every year in road accidents around the world. Also, 20 to 25 million people are hurt in accidents with injuries. According to data from the World Health Organization and the World Bank, the number of these injuries is likely to rise sharply by 2020 (Bank, 2010). According to the descriptive analysis, the average number of fatal and non-fatal accidents each year is 43.3% and 56.7%, respectively (Imran, 2015; Labana, 2015).

Pre-hospital care is provided by Emergency Medical Services (EMS). Ambulatory services, transportation of patients to and from treatment locations, and acute medical care, sometimes known as first aid, are all examples of pre-hospital medical services. Previously, emergency services were only accessible by road travel, but today air ambulance services are offered across the nation. The Punjab government formed a separate agency called "Punjab Emergency Service: Rescue 1122" to deal with emergencies. Emergency services are provided via the emergency services contact system with a specific phone number, 1122.

The area selected for this research is Bahawalpur city, which is situated in the south of Punjab and is the 11th largest city of Pakistan. The nature of the study design is descriptive in general and exploratory in specific, is the main cause to choose this area. moreover, like most of the other cities of Punjab, Bahawalpur city is facing urban sprawl, population increase, road infrastructure, and traffic congestion. Hence, this research is a step toward the improvement of emergency health services of this geographic unit.

This research attempts to assess the frequency and geographic distribution of traffic accidents in Pakistan's Bahawalpur. In this research, GIS is used to construct maps that show the number of accidents by location (Hotspot), gender, age group, and time (day/month/year that has the highest accidents). Governments may adopt in-time rescue services to assist minimize road traffic accidents by using the study's results.

This research aims to draw an analysis on RTAs managed by Rescue 1122 and its Research Questions

1. To investigate the pattern and distribution of road traffic accidents managed by Rescue 1122 in Bahawalpur City for the last five years (2017-2021).

<sup>1</sup> Research Scholar/ Rescue office 1122, Bahawalpur, Institute of Business Management and Administrative Sciences, The Islamia University of Bahawalpur, Pakistan

<sup>2</sup> Corresponding Author, Assistant Professor, Department of Marketing & International Business, Institute of Business Management and Administrative Sciences, The Islamia University of Bahawalpur, Pakistan

<sup>3</sup> Assistant professor, Department of Commerce, The Islamia University of Bahawalpur, Pakistan

<sup>4</sup> Associate Professor, Department of Business Finance, Institute of Business Management and Administrative Sciences, The Islamia University of Bahawalpur, Pakistan

2. To investigate the demographic characteristics of the victims in the road traffic accidents managed by Rescue 1122 in Bahawalpur City for the last five years (2017-2021).
3. To investigate the major causes of road traffic accidents managed by Rescue 1122 in Bahawalpur City for the last five years (2017-21).
4. To investigate the accessibility of emergency health care and services in Bahawalpur City.

The results of this research might be used as a foundation by municipal planners and administration to build more roads to reduce traffic congestion in the city's major areas. Maps and datasets from this research may be useful to anyone working on transportation planning and other related concerns.



**Figure 1: Map of Bahawalpur City showing the Rescue 1122 and BVH (Bahawal-Victoria-Hospital) Emergency Medical Services**

## 2. Literature Review

RTA is the 11th leading cause of death in Pakistan (WHO, 2021) with a mortality rate of 17.12 per 100,000 people. This city has the highest number of road traffic accidents in Pakistan and the most RTA deaths in the country. Bahawalpur is a dangerous city because of the 36,000 road accidents that take place there each year. In addition to harming the economy, this issue is also putting families in a precarious position because the death of the family's breadwinner or a serious injury that results in a lifelong limp or expensive long-term treatment puts them in this precarious position (Kazmi&Zubair, 2014).

Vehicle, road infrastructure, and road user defects, as well as their interactions, have been the cause of several traffic accidents (Vlkovský, Šmerek, &Michálek, 2017). No matter how many researches show that human error is the primary cause of all accidents (Allahyari et al., 2008; Different categories of drivers, such as young drivers, senior drivers, and risky drivers, are the most common causes of traffic accidents. Accident investigation begins as soon as the scene of an accident is cleared, and all relevant data on the traffic environment, automobiles, and human factors are gathered. A major goal of the comprehensive accident study is to eliminate the factors that contribute to road accidents and the harm they cause. Young drivers are more likely to be involved in traffic accidents because of two long-term reasons. The following are some examples: As a result of their lack of driving expertise, teenage drivers are more prone to speeding or driving recklessly. Drivers under the age of 25 are more likely to make mistakes in their assessment of a route's difficulty or road surface.

### 2.1. Literature Gap

Nazeer et al. (2021) conducted a study on the risk factors of RTAs in Bahawalpur City. Whereas this study focuses on the dynamics of RTAs as well as the demographic structures of the victims of the last five years. In the study conducted by Nazeer et al. There is hardly any study found on the temporal and spatial dynamics of RTAs as well as no investigations are found on the accessibility of Rescue 1122. This study will use primary data from Rescue

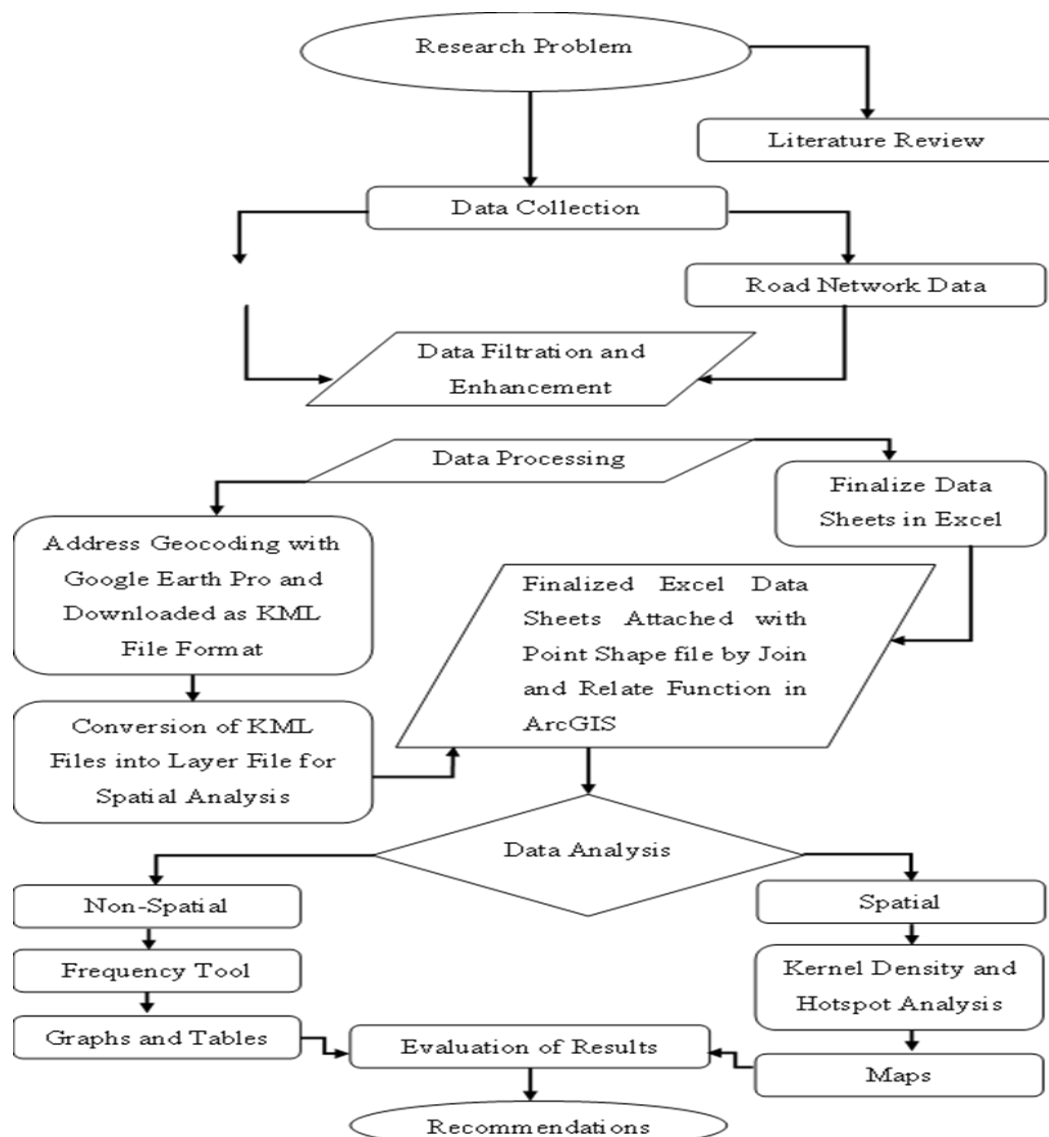
1122 to explore the dynamics of road traffic accidents (RTAs) and the accessibility of Punjab Emergency Services (PES) Rescue 1122 to the city and emergency health services (EHS).

### 3. Methodology

Accidents data was acquired from Rescue 1122 office to draw hotspot maps, and demographic characteristics, whereas, accessibility analysis will be conducted by using land use dataset and road network of the study area. Data required for this research is based on the road traffic accidents reported and managed by Punjab Emergency Services (PES) Rescue 1122, located within the premises of city, types of road accidents, time (year, month, day).

**Table 1: Data Sources, Types, Purpose**

Dataset	Variables	Type	Data Source	Purpose
Road Traffic Accidents	Demographic, Locality, Time, Emergency Service, Impact, No. of Injuries, No. of Deaths, Type of Vehicle, Causes	Qualitative and Quantitative	Office of Rescue 1122, Bahawalpur	Statistical and Spatial Analysis (Hotspot maps)
Road Network of Bahawalpur City	Types of Roads, Types of Land use, Barriers,	Spatial, Vector/Raster	ESRI, OpenStreetMap	Spatial Analysis (Accessibility of EMS and EHS)



**Figure 2: Methodological Framework**

### 4. Road Traffic Accidents (RTAs)

Table 2 shows the total number of accidents, the annual variation of accidents in percentages (%), fatal accidents, killed and injured persons from the year 2017-21. During 2017, a total of 6720 accidents were reported by in the

premises of Rescue 1122 of Bahawalpur city. The proportion of fatal accidents to the total road accidents has consistently fluctuates since 2017 from 1% to 0.7% in 2020. The severity of road accidents measured in terms of persons killed per 100 accidents has decreased from 1.1% to 0.8% in 2020.

**Table 2: Details of road traffic accidents from 2017-21**

Sr. No.	Year	Number of Accidents				Number of Victims		Accidents Severity <sup>2</sup>
		Total number of Accidents	Annual variation of Accidents (%) <sup>1</sup>	Fatal	Percentage of Fatal accidents	Killed	Injured	
1	2017	6720	--	65	1.0%	71	6966	1.1%
2	2018	8083	20%	39	0.5%	47	8216	0.6%
3	2019	8452	5%	37	0.4%	47	8399	0.6%
4	2020	8567	1%	65	0.8%	77	8559	0.9%
5	2021	9922	16%	67	0.7%	78	9853	0.8%

Source: Bahawalpur City Traffic Police Department, 2021

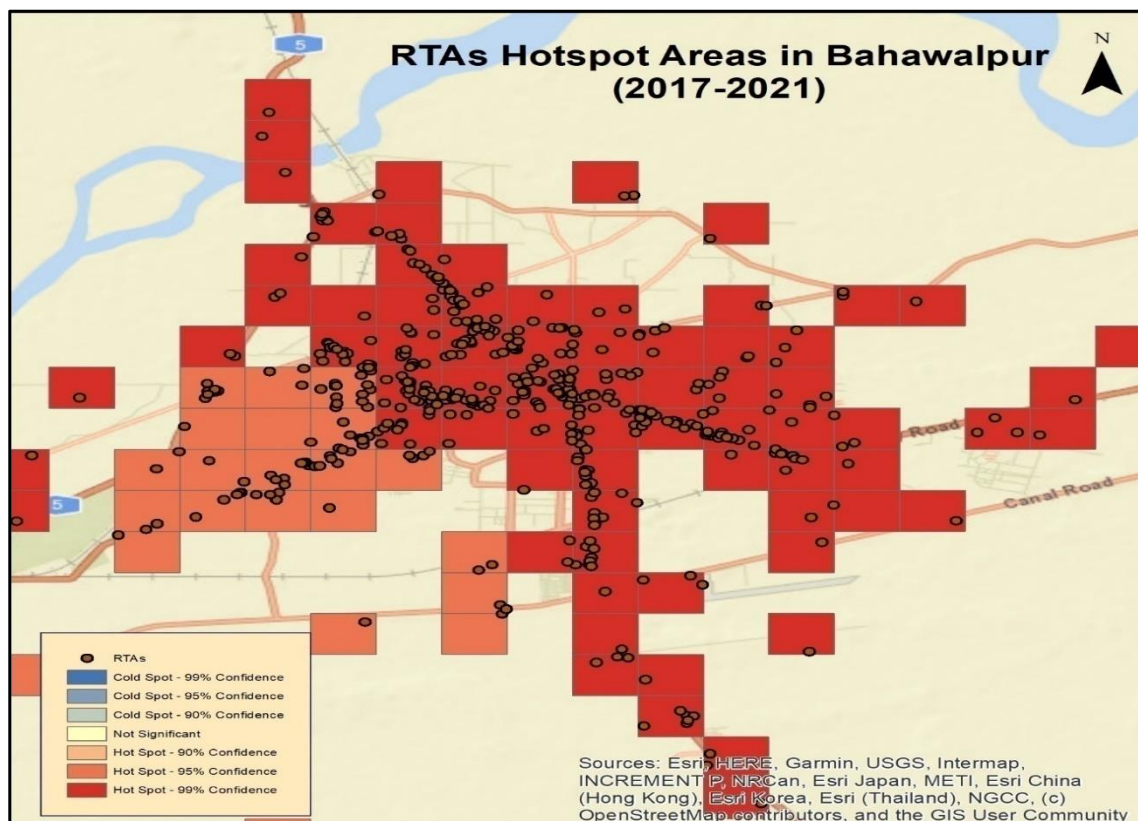
$$1. \text{Annual variation of accidents} = \left( \frac{\text{Current Year} - \text{Previous Year}}{\text{Previous Year}} \right) \cdot 100.$$

$$2. \text{Accidents Severity} = \left( \frac{\text{Total Number of Accidents}}{\text{Number of People Killed}} \right) \cdot 100.$$

The highest number of fatal accidents is 1% in 2017 and comparing to the annual accident's variation in percentages, the fatality is also high as 1%. In the year 2020, the percentage of fatal accidents (0.8%) records the second highest. The lowest percentages of 0.4% and 0.5% fatal accidents occurred in the years 2019 and 2018, respectively. The year 2021 showed 0.7% of fatal accidents.

#### 4.1. Road Traffic Accidents Analysis

Bahawalpur City has adequate road connection both inside its boundaries and to surrounding cities and towns. Bahawalpur City's Road network comprises multiple state highways, major roads, and streets. Analysing the locations of accidents can aid in determining the cause of the incidents. The map below depicts the locations (points) and hotspot areas of accidents involving all types of vehicles from 2017-21.

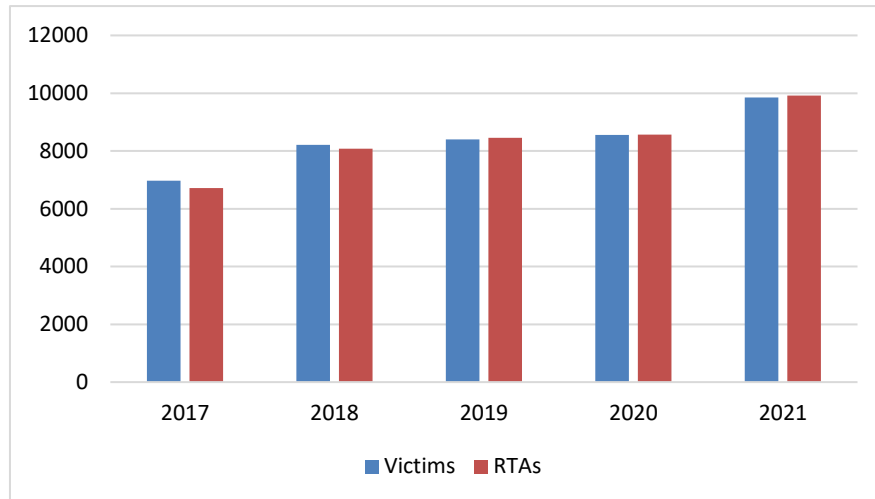


**Figure 3: Hot Spots of Accidents in Bahawalpur (2017-21)**

The Figure 3 shows that most of the accident events took place in the eastern part of the city, where road network and population is dense and also exhibits high traffic. The map shows hotspots and cold spots of the accident data. The data is processed in a GIS Platform to draw these analyses. None of the cold spots can be seen in any part of the city. The cold spots are those spots where accidents are in smaller number.

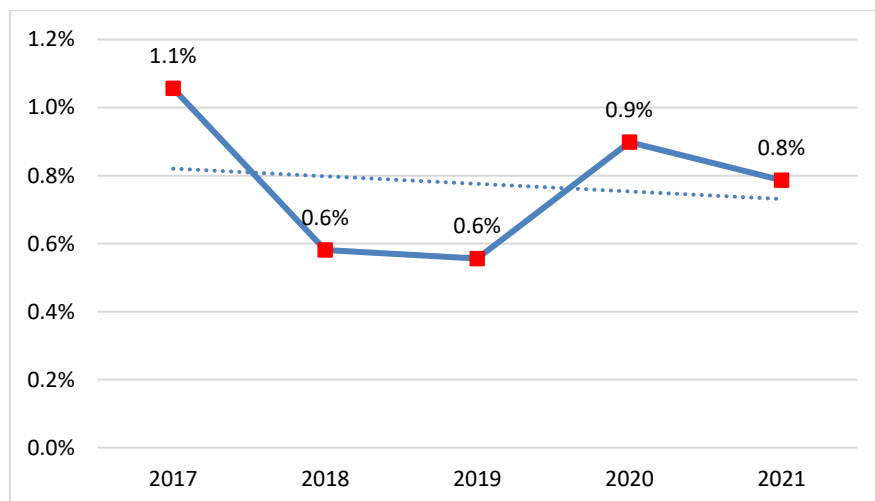
#### 4.2. Demographic Variations

The demographic variations is one of the major objective of this study. The following graphs are drawn from the temporal data on the demographic variables, such as number of victims, gender-wise number of victims, and age groups.



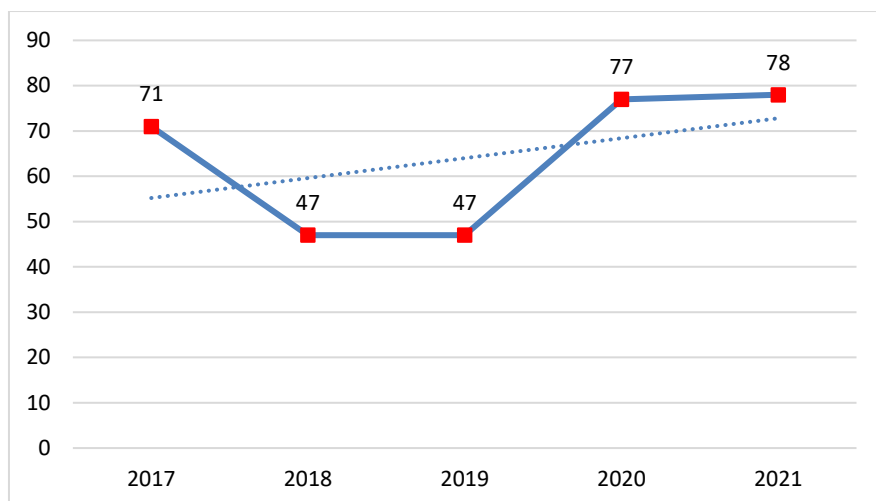
**Figure 4: Accidents and Victims**

The Figure 4 shows the comparison bar graph of average number of accidents and the victims. The number of accidents has increased in the last five years. In the year 2017 the number of accidents were 6720 and victims were 6966, which increased gradually to 9853 (victims) and 9922 (accidents).



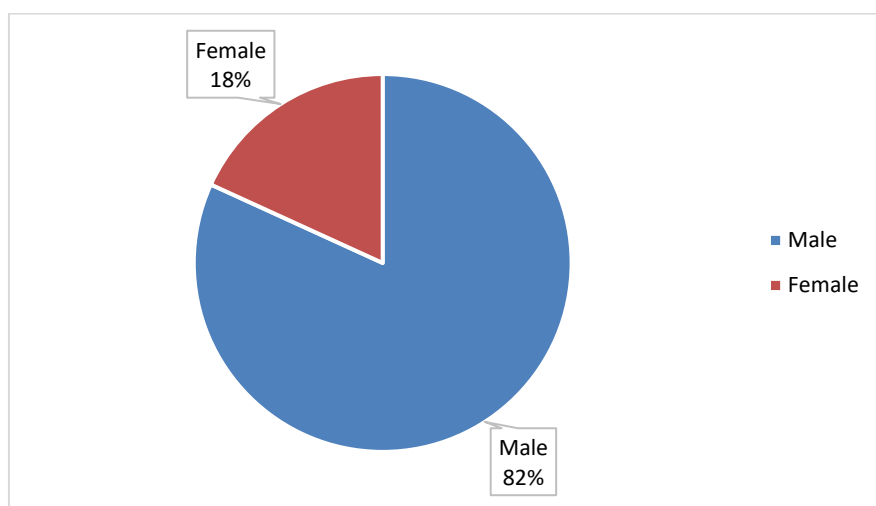
**Figure 5: Accident's severity in Bahawalpur city from 2017-21**

The above graph shows that from year 2017-2119 the number of fatal accidents has decreased from 1.1% to 0.8%. The fatal accidents are those which have a death in an accident case. The mean percentage of these years is 1 accident is fatal per 100 accidents. The injured persons in accidents are not included.



**Figure 6: Number of persons killed in road accidents in Bahawalpur city from 2017-21**

The above graph shows that the number of people killed in accidents, which have increased from 2017-2021. The year 2018 and 2019 shows the least number of killed people as 47 whereas year 2021 shows highest as 78.



**Figure 7: Chart showing the percentage of accidents based on gender**

The above figure shows that the 82% male and 18% female were victims in the road accidents. The numbers have very high differences majorly due to the professional activities of the genders role in the city societies.

**Table 3: Age-wise accidents**

Age	Year					Total	Percentage
	2017	2018	2019	2020	2021		
01-10	419	571	537	569	650	2746	7%
11-20	1538	2061	2089	2034	2329	10051	25%
21-30	2001	2418	2410	2308	2673	11810	29%
31-40	1403	1505	1544	1651	1834	7937	20%
41-50	907	971	958	1042	1193	5071	13%
51-60	494	445	526	598	700	2763	7%
Total	6762	7971	8064	8202	9379	40378	100%



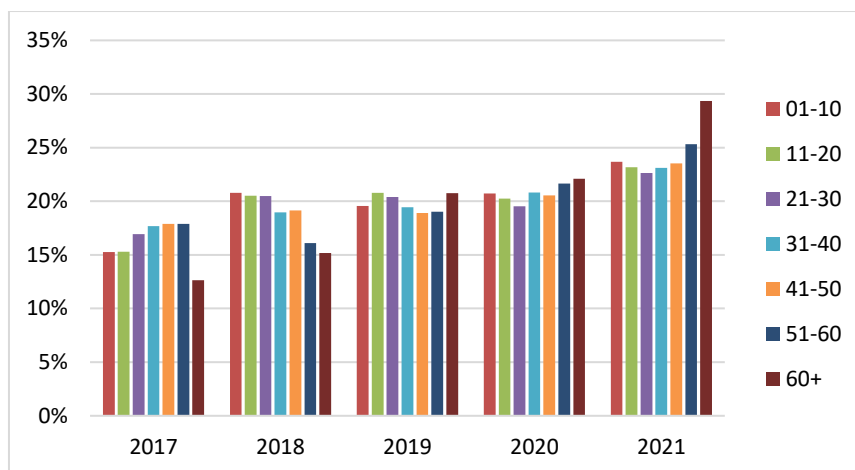


Figure 8: Age-wise Victims (2017-21)

Above table and graph shows total number of victims with their age groups.

#### 4.3. Temporal Variations

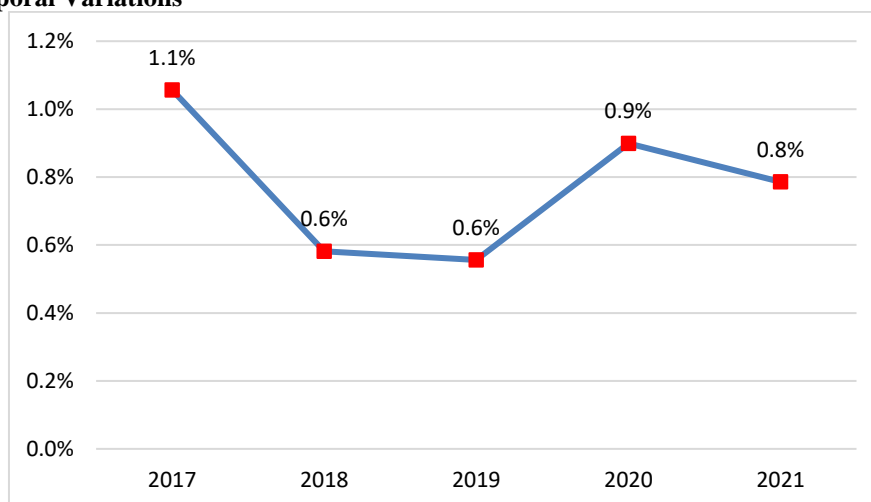


Figure 9: Annual variation of accidents in percentage from 2017-21

The above graph shows the annual variation in the accidents. The green bars show that the accidents have decreased from the previous years, and red bars show the increasing numbers of accidents than the previous year, as given in the Table 2. The number of accidents has decreased dramatically.

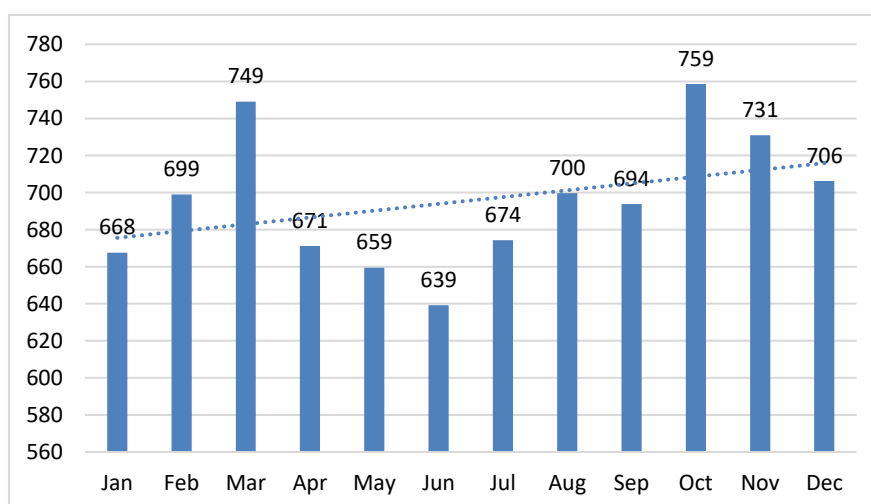
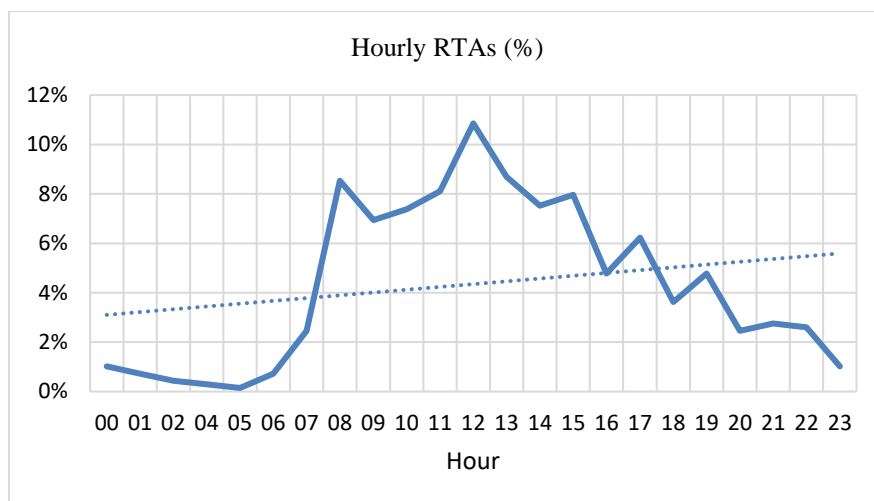


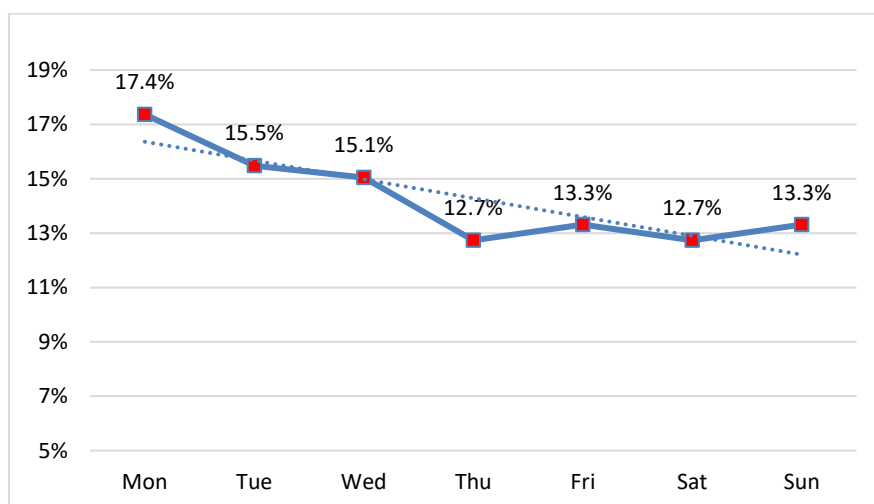
Figure 10: Month-wise Accidents in Bahawalpur City (2017-21)

The monthly graph shows the average number of accidents, and is quite interesting, as it shows October and March with the highest number of accidents as 759 which is higher than other months. It might be due to the clear weather, which results higher congestion and therefore higher number of accidents. Other months shows 639-749 accidents. Average number of monthly accidents per year is 696. Accidents tend to follow a pattern based on the time of day. Daytime accidents outnumber night-time accidents.



**Figure 11: Timely Distribution of RTAs (2017-21)**

The above graph shows the average number of accidents in terms of daytime. It is seen that highest number of accidents occur between 12:00 pm to 03:00 pm, and lowest during 01:00 am to 06:00 am.



**Figure 12: Weekdays Accidents Numbers (2017-21)**

The above graph shows the average number of accidents. It can be seen that working days show highest number of accidents. Sunday shows rise of accidents which gradually decreased till Thursday. Other days show lower number of accidents compared to the other days. Highest accidents are found in Monday (17.4%), and lowest in Thursday (12.7%) and Saturday (12.7%).

#### 4.4. Vehicles

Accidents occur for many causes, but the severity varies depending on the vehicle involved. Vehicles involved in accidents in Bahawalpur fall into eight categories: Motorbike, Car, Truck, Rickshaw, Bus, Van, Tractor Trolley and Other Vehicles. The graphs indicate the percentages of vehicles involved in RTAs from year 2017-21.

Figure 3 shows the percentages of vehicles involved in the RTAs. It is found each year have showed the variation. In the year 2017 Truck and Bus have shown highest accidents as 29%, and motorbikes as the lowest as 14%. The year 2018 RTAs are highest in Bus, 2019 have highest in Vans, 2020 have highest in Tractor Trolley and 2021 have shown highest in Tractor Trolley as 38%, Other Vehicles as 29%, and Motorbikes as 24%.



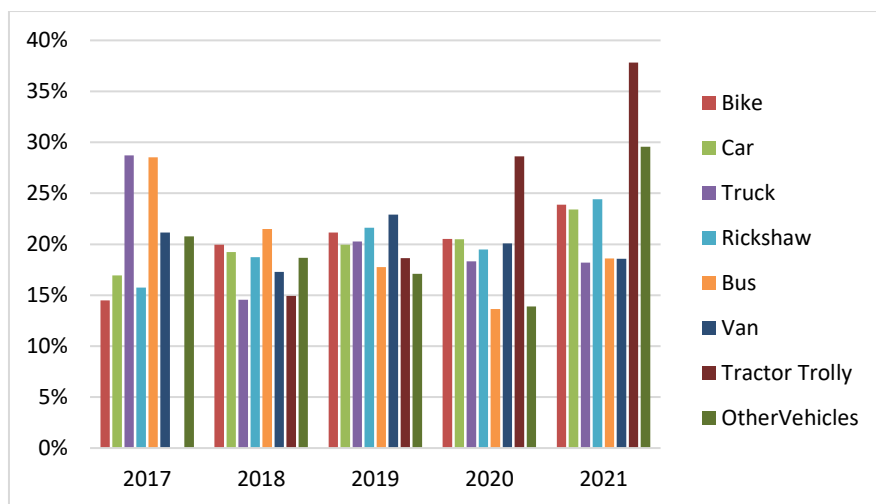


Figure 13: Vehicles in RTAs

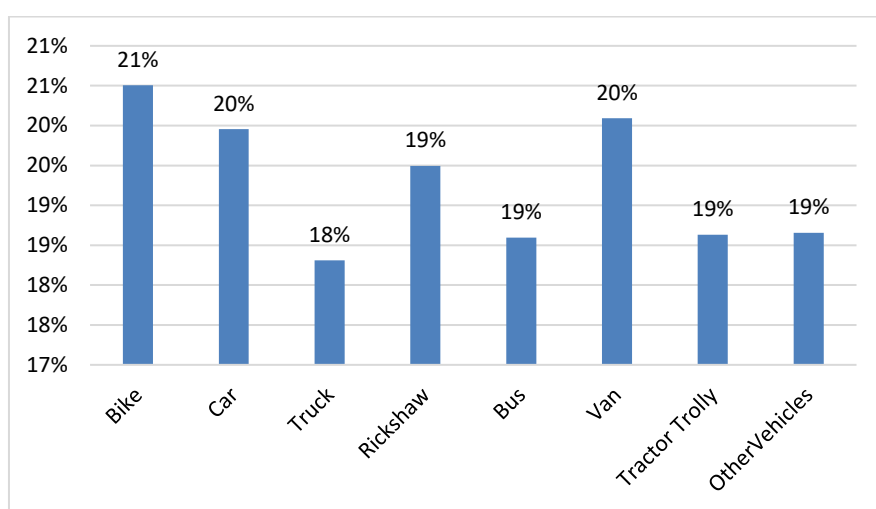


Figure 14: Averages of Vehicles in RTAs

Figure 4 shows the averages of vehicles involved in RTAs. It is found that motorbikes hold the highest as 21%, 2<sup>nd</sup> highest is the Cars, and Vans as 20%. Whereas the remaining are the 19%.

#### 4.5. Road Traffic Injuries (RTIs)

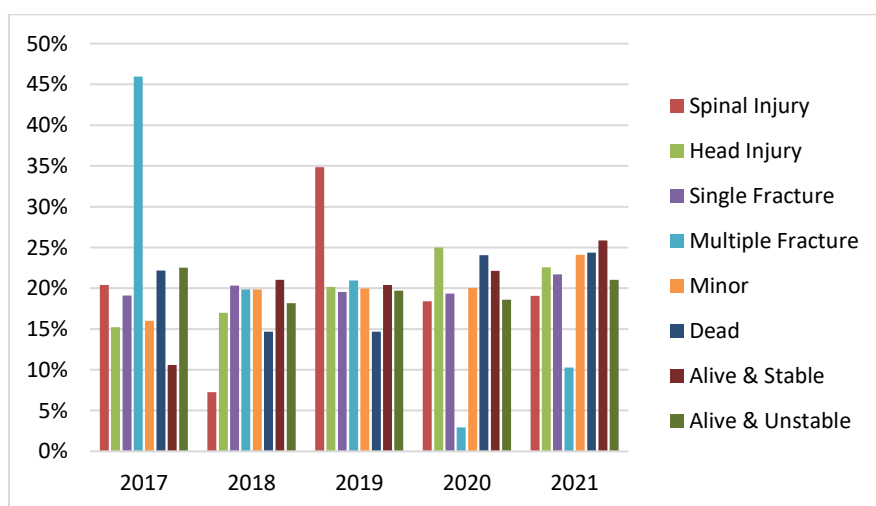
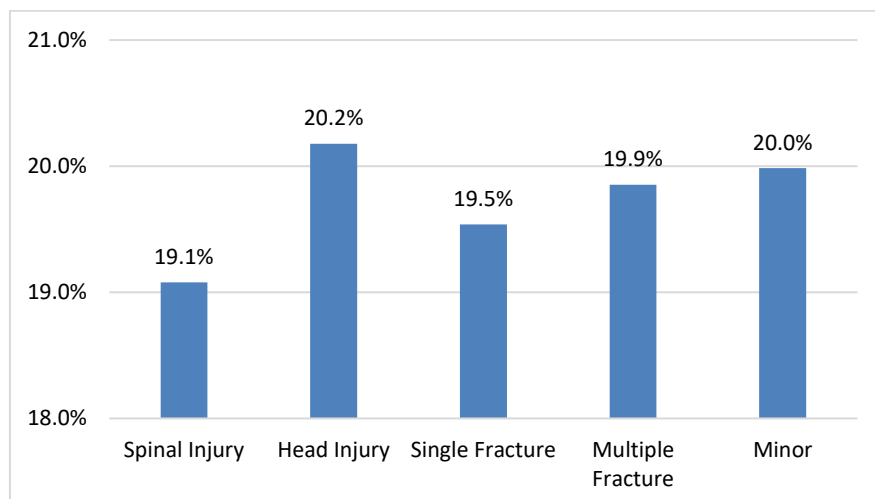


Figure 15: Injuries Types

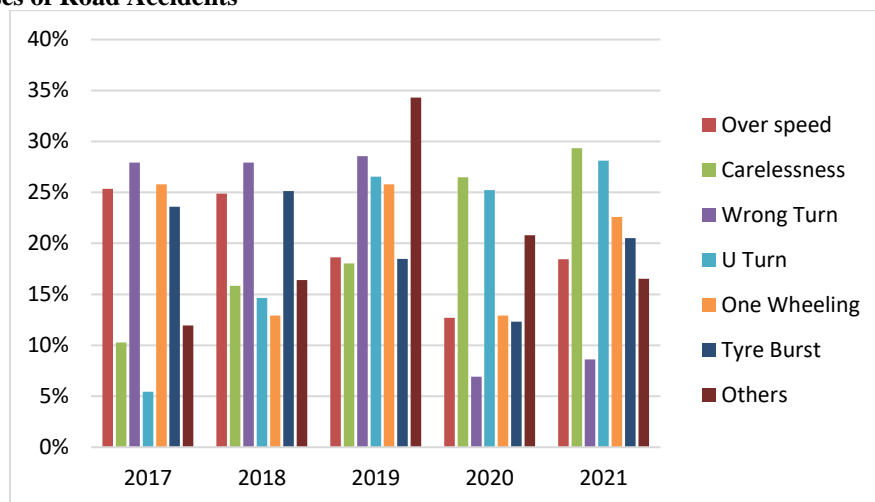
Figure 5 shows that in the year 2017 the most common injury was multiple fractures, in 2018 was the multiple fractures, single fracture, and minor injuries, the most common in 2019 was spinal injury, in 2020 the most common injury was head injury, and in the year 2021 the most common injury was minor injuries, and head injuries.



**Figure 16: Averages of Injuries of Road Accidents**

The Figure 6 shows the overall injuries in the previous five years. It is found that the most common injury is the head injury.

#### 4.6. Causes of Road Accidents



**Figure 17: Causes of Road Traffic Accidents (2017-2120)**

#### 4.7. Overspeed

One of the most common causes of a car accident is someone who isn't paying attention. The number of accidents caused by distracted driving has risen over the last few decades. Drivers should pay full attention to the road at all times, and they should learn to do the same. Drivers can die if they look at texts and reply to texts while driving. They can also make phone calls and read while driving. The Figure 17 shows that the number of accidents due to distraction are high in numbers in each year. 22%, 25%, 26%, 17% and 9% in the year of 2017, 2018, 2019, 2020 and 2021, respectively.

#### 4.8. Careless Driving

A lot of people die when they get into accidents because they speed up. Even when someone is running late, but it's best to drive according to traffic rules. Most of the time, reckless driving leads to terrible accidents. The results show that the number of accidents due to reckless driving are 15%, 14%, 16%, 16%, 21% and 26% in the year of 2017, 2018, 2019, 2020 and 2021, respectively.

#### 4.9. Wrong Turn

It is very important to wear a seat belt while driving. Because it keeps the posture correct, it also lessens the chances of getting hurt in a head-on crash. It also makes it more likely that the drivers will be able to get away from the accident without a lot of damage. The Figure 17 shows that the number of accidents due to reckless driving are 17%, 13%, 12%, 18%, and 15% in the year of 2017, 2018, 2019, 2020 and 2021, respectively.

#### 4.10. U Turn

Wet roads are slippery, so they can be dangerous for cars because the wheels lose their grip on wet roads. Even though it is difficult that a person can't always avoid driving in the rain, it's best to avoid the slippery streets whenever possible. It's also important to pull over and wait until the rain stops. The Figure 17 shows that the number of accidents due to reckless driving are 5%, 8%, 9%, 8%, and 12% in the year of 2017, 2018, 2019, 2020 and 2021, respectively.

#### 4.11. One Wheeling

Poor road conditions can't be avoided and can be very upsetting for people who drive. Avoid potholes at all costs if to avoid damaging the vehicle. The Figure 17 shows that the number of accidents due to reckless driving are 5%, 8%, 9%, 8%, and 12% in the year of 2017, 2018, 2019, 2020 and 2021, respectively.

#### 4.12. Tyre Burst

Tailgating is when a driver drives behind another vehicle and doesn't leave enough space to stop without causing a collision if the vehicle in front suddenly stops. The Figure 17 shows that the number of accidents due to reckless driving are 12%, 10%, 8%, 4%, and 2% in the year of 2017, 2018, 2019, 2020 and 2021, respectively.

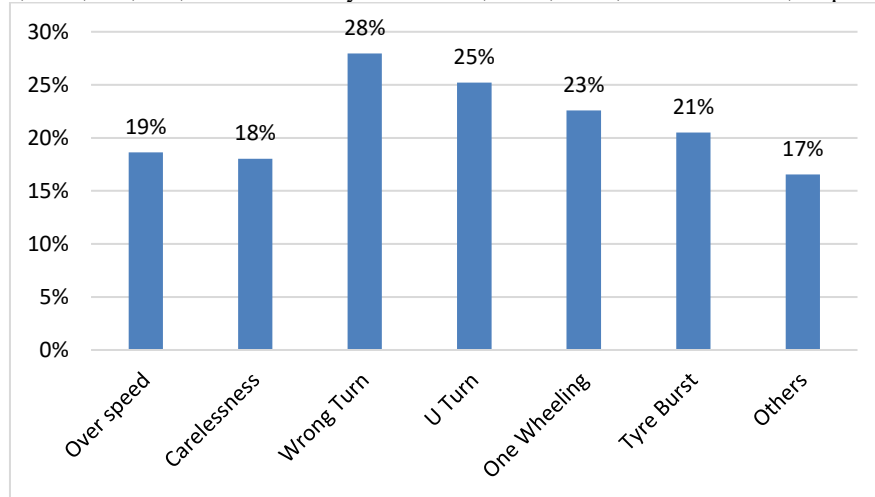


Figure 18

The above figure shows the averages of all the causes of RTAs in Bahawalpur from 2017-2021. It is found that wrong turn, U-turn, and one-wheeling are the first three major causes of 55% accidents, whereas last five causes such as overspeed, carelessness, tyer burst, and others accounts the 45% of traffic road accidents in the study area.

### 5. Accessibility Analysis of Emergency Health Services

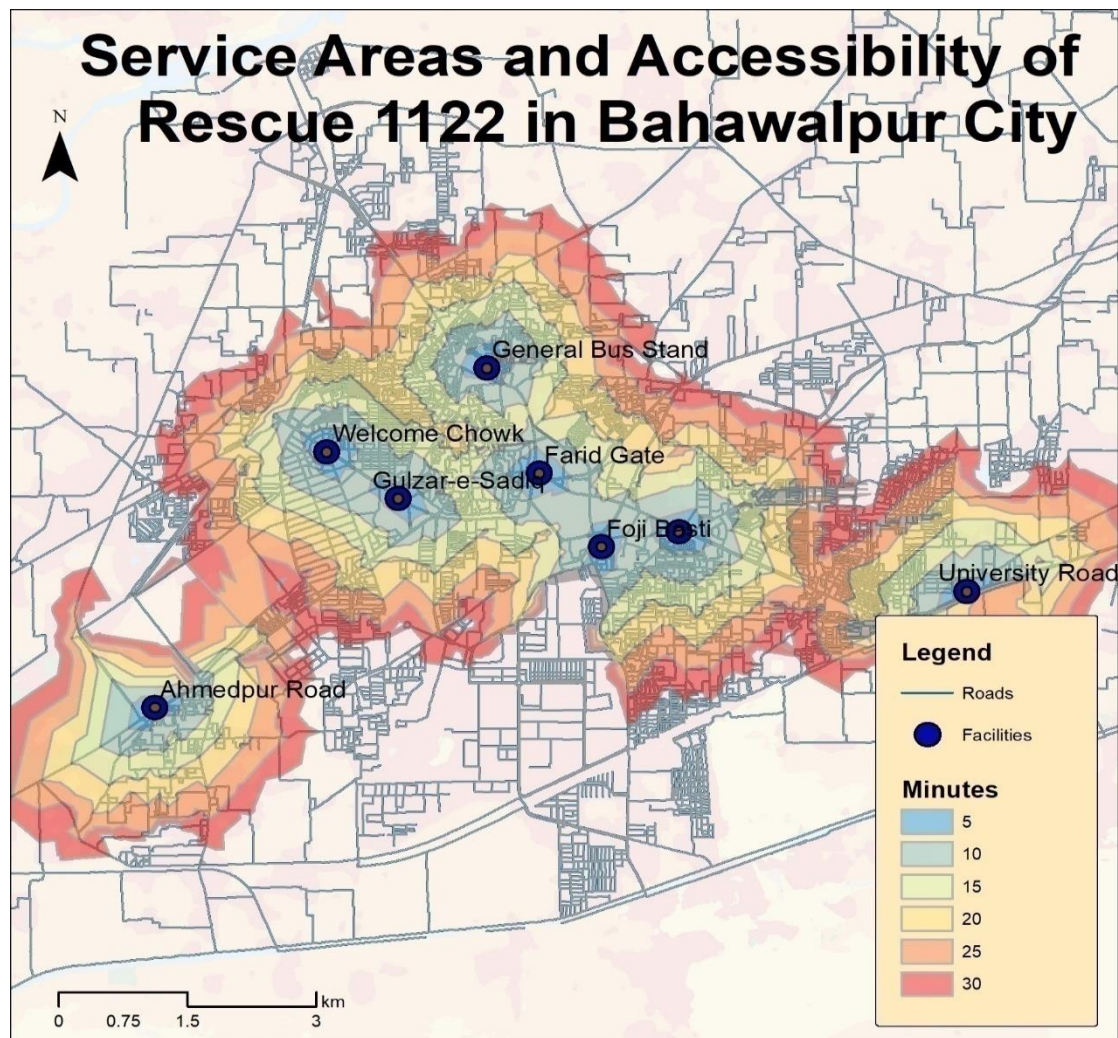
Service areas are drawn on emergency health services (Rescue 1122) main centre and key centres on the road network using a GIS platform. The service area of Bahawalpur city network includes all accessible locations with defined impedance. The 25-minute service area is used as an average for all types of road networks in this study, and it covers all streets that can be accessed within 5, 10, 15, 20, 25 and 30 minutes from that location. Service regions can aid in determining facility accessibility. Concentric service zones demonstrate how access varies with impedance.

The above map shows the time travel map of Rescue 1122 services. The time intervals of 5, 10, 15, 20, 25 and 30 minutes are drawn. There are eight centers, which provide emergency health services to citizens. These hospitals are majorly located in the densely populated area. These emergency services are located at

1. Foji Basti (Central Stations Kali Pulli);
2. One Unit Chok (Key Points);
3. Farid Gate (Key Points);
4. Larri Adda (Key Points);
5. Gulzar e Sadiq (Key Points);
6. Welcome Chok (Key Points);
7. PSO Pump University Road (Key Points); and
8. New Sabzi Mandi (Key Points).

These centers provide services to 326,750 number of populations by 5-15 minutes of travel time, 252,000 number of populations from 15-30 minutes of travel time.

The city needs more emergency health services to accommodate the occupants in the road accidents, as large number of populations depend on these services. Whereas, the travel time is also quite high to reach by the facility.



**Figure 19: Service Areas and Accessibility of Rescue 1122 in Bahawalpur City**

## 6. Conclusion

Bahawalpur road traffic accidents are the subject of this study. In addition to hotspot location, temporal trends; hourly time, day, month, and year, more demographical aspects such as the number of victims, gender victim, and age category were analysed. For the period of 2017 to 2021, we also looked at the more involved vehicle category. According to research, the number of traffic fatalities in Bahawalpur is steadily rising. As the number of two-wheeled vehicles (Motorbikes) on the road grows in cities and suburbs, we see an increase in traffic accidents. As a result of this study, the eastern part of the city has been a constant location for dangerous road traffic accidents during the study period. Clustering and intensity of road traffic accidents can be seen on the hot spot map, while the cold spots show clustering of low values, such as major intersections, link roads or parking along the roadways. It is clear from the temporal trends map that the study area's spatial pattern is highly variable. This is due to a variety of factors, including city mega-construction, driving habits, demographics, and, perhaps most importantly, weather. The frequency of traffic accidents is higher on dry days than on days when it has rained. Road traffic accidents occur more frequently during the day than at night, according to a statistical analysis. Between 08:00 am to 04:00 pm accidents claim the most lives. The month of March and October also has a high rate of RTAs, with many occurring on weekends, especially on Fridays, from 2017 to 2021. The demography of a city is severely impacted by road traffic accidents, according to a comprehensive study. Teenagers are a high-risk generation. Regardless of whether they were driving or riding a bicycle, they were harmed. In Bahawalpur city, the "two-wheeler" category contains a large portion of RTA between the ages of 10-19 and 20-29 over the course of four years. The "Light Vehicle" category of public transportation is responsible for a significant number of accidents. It is hoped that this study will serve as a foundation for future research into RTAs. Using GIS (geographic information system) in the field of transportation and RTAs in Bahawalpur City, this study makes a small contribution.

The Rescue 1122 key centres offer services to a total of 326,750 people living within 5 to 15 minutes of travel time, and 252,000 people living between 15 to 30 minutes of journey time. As a result of the huge number of people who rely on these services, the city has to increase the number of its emergency medical services so that it

can better assist those who are injured in traffic accidents. On the other hand, the amount of time necessary for travel is substantial in order to access the facility.

### 6.1. Recommendations

Here are a few suggestions based on the findings of this study that can be implemented in order to reduce the frequency of road traffic accidents as well as their severity in terms of damage. It's possible that putting these suggestions into action will take some time, but some are so general that relevant authorities can act right away to help prevent this catastrophe.

- At vulnerable times, Traffic Police should deploy more traffic wardens to hotspot locations so they can safely and frequently manage traffic loads.
- Before issuing a driver's licence, a licencing agency should thoroughly evaluate each applicant's driving ability. Teenage bikers account for 46% of Bahawalpur's RTA, making this a pressing issue for that demographic.
- This death game in a mega city must be stopped by a strong enforcement of the law against one-wheeling, traffic control, and legislative authorities.
- In urban areas, public transportation is the primary mode of transportation. Traffic control authorities should organise technical workshops for drivers of Mazda vans, Suzuki pickups, and Rickshaws, which participate in RTAs, to learn how to drive safely and courteously in congested areas or during peak hours.
- The study also found that overcrowding among passengers is a problem, prompting the traffic control department to devise a policy with an immediate timetable for mitigating this issue.
- To lessen the impact of any unfortunate events on the road, speed limits in urban areas should be set at 40 km/h, especially in the city centre.
- In the case of a traffic accident, data collection is a critical but delicate issue. It is therefore recommended that traffic wardens and/or police officers receive training in the use of GPS and other location marking devices.

### References

- Ahmed, A. (2007). Road safety in Pakistan. *National Road Safety Secretariat, Islamabad, 142*.
- Ahmed, A. (2007). *Road Safety in Pakistan. National Road Safety*. Retrieved from
- Ali, A., Mehraj, J., Mahmood, S., Mirza, Z., & Tahir, M. (2010). Frequency of Risk Factors Associated with Road Traffic Accidents of Motorbike in a Big City of a Developing Country. *Journal of the Dow University of Health Sciences (JDUHS)*, 4(2), 68-72.
- Ali, M. K., & Iftikhar, I. (2020). This survey study evaluates the PR efforts and strategies of Rescue 1122 in informing. *Journal of Humanities and Social Sciences Studies (JHSSS)*, 2(2), 1-15.
- Allahyari, T., Saraji, G. N., Adi, J., Hosseini, M., Iravani, M., Younesian, M., & Kass, S. J. (2008). Cognitive failures, driving errors and driving accidents. *International journal of occupational safety and ergonomics*, 14(2), 149-158.
- Ameratunga, S. (2006). Road-traffic injuries: confronting disparities to address a global health problem. *The Lancet*, 367, 1533-1540.
- Anderson, T. K. (2009). Kernel density estimation and K-means clustering to profile road accident hotspots. *Accident Analysis & Prevention*, 41(3), 359-364.
- Bachani, A. M., Peden, M., Gururaj, G., Norton, R., & Hyder, A. A. (2017). Road Traffic Injuries. In C. N. Mock, R. Nugent, O. Kobusingye, & K. R. Smith (Eds.), *Injury Prevention and Environmental Health*. Washington (DC): The International Bank for Reconstruction and Development / The World Bank.
- Bačkalić, S. (2013). Temporal analysis of the traffic accidents occurrence in province of Vojvodina. *Transport Problems*, 8(1), 87--93.
- Bank, W. (2002). *Pakistan Poverty Assessment. Poverty in Pakistan, Vulnerabilities, Social Gaps, and Rural Dynamics*. Retrieved from
- Bank, W. (2010). *Road Safety: A Development Challenge for South Asia*. Retrieved from Washington, D.C.:
- Bela, S., Geetha, R., Gururaj, G., & Murlidhar, T. (2009). Development of a feasibility module for road traffic injuries surveillance. *ICMR Report*, 1, 43-47.
- Bennett, S. (1992). Promoting the private sector: a review of developing country trends. *Health Policy Plan*, 7, 97-110.
- Bishai, D. (2003). Rates of public investment for road safety in developing countries: case studies of Uganda and Pakistan. *Health Policy Planning*, 18, 232-235.
- Blincoe, L. J., Seay, A. G., Zaloshnja, E., Miller, T. R., Romano, E. O., Luchter, S., & Spicer, R. S. (2002). *The economic impact of motor vehicle crashes, 2000*. Retrieved from
- Brayne, C., Dufouil, C., Ahmed, A., Dening, T. R., Chi, L.-Y., McGee, M., & Huppert, F. A. (2000). Very old drivers: findings from a population cohort of people aged 84 and over. *International Journal of Epidemiology*, 29(4), 704-707.
- Bucsuházy, K., Matuchová, E., Zůvala, R., Moravcová, P., Kostíková, M., & Mikulec, R. (2020). Human factors contributing to the road traffic accident occurrence. *Transportation research procedia*, 45, 555-561.

- Cadar, R. D., Boitor, M. R., & Dumitrescu, M. (2017). Effects of traffic volumes on accidents: The case of Romania's national roads. *Geogr. Tech*, 12(2), 20-29.
- Casado-Sanz, N., Guirao, B., & Attard, M. (2020). Analysis of the risk factors affecting the severity of traffic accidents on Spanish crosstown roads: The driver's perspective. *Sustainability*, 12(6), 2237.
- Çela, L., Shiode, S., & Lipovac, K. (2013). Integrating GIS and spatial analytical techniques in an analysis of road traffic accidents in Serbia. *International Journal for Traffic and Transport Engineering*, 3(1), 1-15.
- Chandran, A., Hyder, A. A., & Peek-Asa, C. (2010). The global burden of unintentional injuries and an agenda for progress. *Epidemiologic reviews*, 32(1), 110-120.
- Cheng, W., & Washington, S. (2008). *New Criteria for Evaluating Methods of Identifying Hot Spots*. Retrieved from
- Chin, H. C., & Quddus, M. A. (2003). Applying the random effect negative binomial model to examine traffic accident occurrence at signalized intersections. *Accident Analysis & Prevention*, 35(2), 253-259.
- Choudhary, J., Ohri, A., & Kumar, B. (2015). *Spatial and statistical analysis of road accidents hot spots using GIS*. Paper presented at the 3rd Conference of Transportation Research Group of India (3rd CTRG).
- De Leon, M. R. M., Cal, P. C., & Sigua, R. G. (2005). Estimation of socio-economic cost of road accidents in Metro Manila. *Journal of the Eastern Asia Society for Transportation Studies*, 6, 3183-3198.
- de Winter, J. C., & Dodou, D. (2010). The Driver Behaviour Questionnaire as a predictor of accidents: A meta-analysis. *Journal of safety research*, 41(6), 463-470.
- Dingus, T. A., Guo, F., Lee, S., Antin, J. F., Perez, M., Buchanan-King, M., & Hankey, J. (2016). Driver crash risk factors and prevalence evaluation using naturalistic driving data. *Proceedings of the National Academy of Sciences*, 113(10), 2636-2641.
- Dvorak, Z., Leitner, B., & Novak, L. (2011). National transport information system in Slovakia as a tool for security enhancing of critical accident locations. *Kaunas, Lithuania, Kaunas University of Technology*, 145-148.
- Edward, K. (2011). *Asian Affluence: The emerging 21st Century Middle Class*. Retrieved from
- Effati, M. (2012). Determining Roads Black Spots Using Spatial Information Systems and Multicriteria Decision Making Processes. *Transportation engineering*, 4, 349-363.
- Erdogan, S., Yilmaz, I., Baybura, T., & Gullu, M. (2008). Geographical information systems aided traffic accident analysis system case study: city of Afyonkarahisar. *Accident Analysis & Prevention*, 40(1), 174-181.
- Fagnant, D. J., & Kockelman, K. (2015). Preparing a nation for autonomous vehicles: opportunities, barriers and policy recommendations. *Transportation Research Part A: Policy and Practice*, 77, 167-181.
- Ferguson, S. A. (2003). Other high-risk factors for young drivers—how graduated licensing does, doesn't, or could address them. *Journal of safety research*, 34(1), 71-77.
- GOP. (1994). *Eight Year Plan (1993-98)*. Retrieved from Islamabad:
- Gundogdu, I. B. (2010). Applying linear analysis methods to GIS-supported procedures for preventing traffic accidents: Case study of Konya. *Safety science*, 48(6), 763-769.
- Gundogdu, I. B. (2014). The Validity of Geostatistical Analyst in Determining the Risky Zones of Highways and Planning New Roads. *International Journal of Recent Development in Engineering and Technology*, 3(3), 112-117.
- Haadi, A.-R. (2014). Identification of factors that cause severity of road accidents in Ghana: a case study of the Northern Region. *International Journal of Applied Science and Technology*, 4(3).
- Heydari, S. (2014). Epidemiological characteristics of fatal traffic accidents in Fars province, Iran: A community-based survey. *Public Health*, 127, 704-709.
- Hussain, J. S., & Naz, A. A. (2015). Public Perception towards Punjab Emergency Service Rescue 1122 in Lahore. *Pakistan Vision*, 16(2), 164-181.
- Hyder, A. A. (2000). Motor vehicle crash s in Pakistan: The emerging epidemic. *Inj. Prev*, 6, 199-202.
- Imran, M. (2009). Public transport in Pakistan: a critical overview. *Journal of Public Transportation*, 12(2), 4.
- Imran, M. (2015). Road Traffic Accidents; Prediction in Pakistan. *Professional Medical Journal*, 22, 705-709.
- Jaroszweski, D., & McNamara, T. (2014). The influence of rainfall on road accidents in urban areas: A weather radar approach. *Travel behaviour and society*, 1(1), 15-21.
- Jayan, D. K., & Ganeshkumar, B. (2010). Identification of accident hot spots: a GIS based implementation for Kannur district, Kerala. *International journal of Geomatics and Geosciences*, 1(1), 51.
- Jones, A. P., Langford, I. H., & Bentham, G. (1996). The application of K-function analysis to the geographical distribution of road traffic accident outcomes in Norfolk, England. *Social Science & Medicine*, 42(6), 879-885.
- Kazmi, J. H., & Zubair, S. (2014). Estimation of Vehicle Damage Cost Involved in Road Traffic Accidents in Karachi, Pakistan: A Geospatial Perspective. *Procedia Engineering*, 77, 70-78.
- Khan, A. M., & Tehreem, A. (2012). Causes of road accidents in Pakistan. *Journal of Asian Development Studies*, 1(1), 22-29.



- Krafft, T., Castrillo-Riesgo, L. G., Edwards, S., Fischer, M., Overton, J., Robertson-Steel, I., & König, A. (2003). European emergency data project (EED Project) EMS data-based health surveillance system. *The European Journal of Public Health*, 13(3), 85-90.
- Kravchenko, P., & Oleshchenko, E. (2017). Mechanisms of functional properties formation of traffic safety systems. *Transportation research procedia*, 20, 367-372.
- Kurakina, E., Evtiukov, S., & Rajczyk, J. (2018). Forecasting of road accident in the DVRE system. *Transportation research procedia*, 36, 380-385.
- Kurakina, E., Kravchenko, P., Brylev, I., & Rajczyk, J. (2020). Systemic approach to auditing road traffic accident black spots. *Transportation research procedia*, 50, 330-336.
- Kweon, Y.-J. (2011). Development of crash prediction models with individual vehicular data. *Transportation research part C: emerging technologies*, 19(6), 1353-1363.
- Labana, A. B. (2015). A review of the effect of traffic and weather characteristics on road safety. *Accident Analysis and Prevention*, 72, 224-225.
- Lateef, M. U. (2011). Spatial patterns monitoring of road traffic injuries in Karachi metropolis. *International Journal of Injury Control and Safety Promotion*, 18(2), 97-105.
- Lavasani, M., Jin, X., & Du, Y. (2016). Market penetration model for autonomous vehicles on the basis of earlier technology adoption experience. *Transportation research record*, 2597(1), 67-74.
- Lee, C., Hellinga, B., & Saccomanno, F. (2003). Proactive freeway crash prevention using real-time traffic control. *Canadian Journal of Civil Engineering*, 30(6), 1034-1041.
- Lindenmann, W. K. (2003). *Guidelines for Measuring the Effectiveness of PR Programs and Activities*. Retrieved from
- Loo, B. P., & Yao, S. (2013). The identification of traffic crash hot zones under the link-attribute and event-based approaches in a network-constrained environment. *Computers, Environment and Urban Systems*, 41, 249-261.
- Malik, M. R. (2011). Risk Factors of Road Traffic Accidents and Emergency Health Services of Rescue 1122 at Rahim Yar Khan. *Annals*, 17(2), 130-134.
- Manepalli, U. R., Bham, G. H., & Kandada, S. (2011). *Evaluation of hotspots identification using kernel density estimation (K) and Getis-Ord (Gi\*) on I-630*. Paper presented at the 3rd International Conference on Road Safety and Simulation.
- Martin, J.-L. (2002). Relationship between crash rate and hourly traffic flow on interurban motorways. *Accident Analysis & Prevention*, 34(5), 619-629.
- Marusin, A., Marusin, A., & Ablyazov, T. (2019). *Transport infrastructure safety improvement based on digital technology implementation*. Paper presented at the International Conference on Digital Technologies in Logistics and Infrastructure (ICDTLI 2019).
- Marusin, A., Marusin, A., & Danilov, I. (2018). A method for assessing the influence of automated traffic enforcement system parameters on traffic safety. *Transportation research procedia*, 36, 500-506.
- Masood, M. T. (2011). Transportation problems in developing countries Pakistan: a case-in-point. *International Journal of Business and management*, 6(11), 256.
- Mohammad, A. A., Ambak, K., Mosa, A., & Syamsunur, D. (2018). Classification of traffic accident prediction models: a review paper. *International Journal of Advances in Science Engineering and Technology*, 6(2), 35-38.
- Mohammed, A. A., Ambak, K., Mosa, A. M., & Syamsunur, D. (2019). Expert system in engineering transportation: a review. *Journal of Engineering Science and Technology*, 14(1), 229-252.
- Mohan, D., Tiwari, G., & Khayesi, M. (2006). *Road traffic injury prevention : training manual*. Retrieved from Geneva:
- Naseer, R., Gillani, Y. R., & Durrani, M. (2020). Covid-19 Outbreak & Response of Emergency Medical Service (Rescue 1122) in Pakistan—Way Forward. *International Journal of Academic Research in Public Policy & Governance*, 7(1), 100-110.
- National Response Plan. (2004). Retrieved from US:
- Nations, U. (2010). *Global Plan for the Decade of Action for Road Safety 2011–2020*. Retrieved from [http://www.who.int/roadsafety/decade\\_of\\_action/plan/en/](http://www.who.int/roadsafety/decade_of_action/plan/en/)
- Nazeer, M. A., Mohsin, M., & Rehman, A. (2021). Identifying the Causes and Protective Measures of Road Traffic Accidents (RTAs) in Bahawalpur City, Pakistan. *International Journal of Innovations in Science & Technology*, 3(4), 208-217.
- NHA. (2006). *Road accidents in Pakistan*. Retrieved from Islamabad:
- Nishtar, S. (2021). The Health Budget 2006-the policy context. *Viewpoint: Pakistan Health Policy Forum*.
- Nishtar, S., Mohamud, K. B., Razzak, J., Ghaffar, A., Ahmed, A., Khan, S. A., & Mirza, Y. A. (2004). Injury prevention and control: National Action Plan for NCD Prevention, Control and Health Promotion in Pakistan. *JPM. The Journal of the Pakistan Medical Association*, 54(12 Suppl 3), S57-68.
- Oguchi, T. (2016). Achieving safe road traffic — the experience in Japan. *IATSS Research*, 39(2), 110-116.



- Onyachi, N., Maniple, E., & Santini, S. (2011). Preparedness For Mass Casualties Of Road Traffic Crashes In Uganda: Assessing The Surge Capacity Of Highway General Hospitals.
- Özkan, T., & Lajunen, T. (2006). What causes the differences in driving between young men and women? The effects of gender roles and sex on young drivers' driving behaviour and self-assessment of skills. *Transportation research part F: Traffic psychology and behaviour*, 9(4), 269-277.
- Pan, R. H. (2014). Epidemiology of orthopedic fractures and other injuries among inpatients admitted due to traffic accidents: A 10-year nationwide survey in Taiwan. *Sci. World J.*
- Pathak, S. (2014). An epidemiological study of road traffic accident cases admitted in a tertiary care hospital. *Medical Journal Armed Forces India*, 70, 32-35.
- Peden, M. (2004). *World Report on Road Traffic Injury Prevention*. Retrieved from
- Perrot, J. (2014). Different approaches to contracting in health systems. *Bull World Health Organ*, 84, 859-866.
- Petrović, Đ., Mijailović, R., & Pešić, D. (2020). Traffic accidents with autonomous vehicles: type of collisions, manoeuvres and errors of conventional vehicles' drivers. *Transportation research procedia*, 45, 161-168.
- Plawecki, M. H., Koskie, S., Kosobud, A., Justiss, M. D., & O'Connor, S. (2018). Alcohol intoxication progressively impairs drivers' capacity to detect important environmental stimuli. *Pharmacology Biochemistry and Behavior*, 175, 62-68.
- Plug, C., Xia, J. C., & Caulfield, C. (2011). Spatial and temporal visualisation techniques for crash analysis. *Accident Analysis & Prevention*, 43(6), 1937-1946.
- Podoprigora, N., Stepina, P., Dobromirov, V., & Kotikov, J. (2020). Determination of driver's reaction time in expert studies of road traffic accidents using software and hardware complex. *Transportation research procedia*, 50, 538-544.
- Prasad, A. (2013). Training in trauma care. *The Indian Journal of Surgery*, 75(6), 498.
- Prasannakumar, V., Vijith, H., Charutha, R., & Geetha, N. (2011). Spatio-temporal clustering of road accidents: GIS based analysis and assessment. *Procedia-social and behavioral sciences*, 21, 317-325.
- Pushkarev, A., Podoprigora, N., & Dobromirov, V. (2018). Methods of providing failure-free operation in transport infrastructure objects. *Transportation research procedia*, 36, 634-639.
- Razzak, J., Khan, U. R., & Jalal, S. (2011). Application of geographical information system (GIS) for mapping road traffic injuries using existing source of data in Karachi, Pakistan--a pilot study. *Journal of the Pakistan Medical Association*, 61(7), 640.
- Retallack, A. E., & Ostendorf, B. (2019). Current understanding of the effects of congestion on traffic accidents. *International journal of environmental research and public health*, 16(18), 3400.
- Rumar, K. (1985). The Role of Perceptual and Cognitive Filters in Observed Behavior. In L. Evans & R. C. Schwing (Eds.), *Human Behavior and Traffic Safety* (pp. 151-170). Boston, MA: Springer US.
- Sabel, C. E., Kingham, S., Nicholson, A., & Bartie, P. (2005). *Road traffic accident simulation modelling-a kernel estimation approach*. Paper presented at the The 17th annual colloquium of the spatial information research Centre University of Otago, Dunedin, New Zealand.
- Seliverstov, Y. A., Seliverstov, S. A., Komashinskiy, V., Tarantsev, A., Shatalova, N., & Grigoriev, V. (2017). *Intelligent systems preventing road traffic accidents in megalopolises in order to evaluate*. Paper presented at the 2017 XX IEEE International Conference on Soft Computing and Measurements (SCM).
- Shah, S. A. R., & Khattak, A. (2013). Road Traffic Accident Analysis of Motorways in Pakistan. *International Journal of Engineering Research & Technology (IJERT)*, 2(11), 3340-3354.
- Shefer, D. (1994). Congestion, air pollution, and road fatalities in urban areas. *Accident Analysis & Prevention*, 26(4), 501-509.
- Shiomi, Y., Watanabe, K., Nakamura, H., & Akahane, H. (2017). Assessing safety of signalized intersections: Influence of geometric attributes and regionality on traffic accident risk. *Transportation research record*, 2659(1), 71-79.
- Singh, S. K. (2012). The Neglected Epidemic: Road Traffic Crashes in India. *Metamorphosis*, 11(2), 27-49.
- Singh, S. K. (2017). *Road Traffic Accidents in India: Issues and Challenges*. Paper presented at the World Conference on Transport Research - WCTR 2016, Shanghai.
- Soltani, A., & Askari, S. (2014). Analysis of intra-urban traffic accidents using spatiotemporal visualization techniques. *Transport and Telecommunication*, 15(3), 227.
- Steenberghen, T., Dufays, T., Thomas, I., & Flahaut, B. (2004). Intra-urban location and clustering of road accidents using GIS: a Belgian example. *International Journal of Geographical Information Science*, 18(2), 169-181.
- Sun, J., Li, T., Li, F., & Chen, F. (2016). Analysis of safety factors for urban expressways considering the effect of congestion in Shanghai, China. *Accident Analysis & Prevention*, 95, 503-511.
- Sun, Z., & Yang, Z. (2003). *A GIS System for Managing and Analyzing Urban Road Traffic Accident*. Paper presented at the Proceedings of the Eastern Asia Society for Transportation Studies.

- Tahir, N., Naseer, R., Khan, S. M., Macassa, G., Hashmi, W., & Durrani, M. (2012). Road traffic crashes managed by Rescue 1122 in Lahore, Pakistan. *International Journal of Injury Control and Safety Promotion*, 19(4), 347-350.
- Taylor, J. E., Alpass, F., Stephens, C., & Towers, A. (2011). Driving anxiety and fear in young older adults in New Zealand. *Age and ageing*, 40(1), 62-66.
- Thakali, L., Kwon, T. J., & Fu, L. (2015). Identification of crash hotspots using kernel density estimation and kriging methods: a comparison. *Journal of Modern Transportation*, 23(2), 93-106.
- Thordarson, S., & Olafsson, B. (2008). Weather induced road accidents, winter maintenance and user information. *Transport Research Arena Europe*, 2008, 72.
- Toroyan, T. (2009). *Global status report on road safety: time for action*. Retrieved from
- Treat, J. R., Tumbas, N., McDonald, S., Shinar, D., Hume, R. D., Mayer, R., . . . Castellan, N. (1979). Tri-level study of the causes of traffic accidents: Final report. Volume I: Casual factor tabulations and assessments.
- Vlkovský, M., Šmerek, M., & Michálek, J. (2017). *Cargo securing during transport depending on the type of a road*. Paper presented at the IOP Conference Series: Materials Science and Engineering.
- Wang, C., Quddus, M. A., & Ison, S. G. (2013). The effect of traffic and road characteristics on road safety: A review and future research direction. *Safety science*, 57, 264-275.
- Weber, S., Tschetch, K., Ernstberger, K., Labenski, V., & Blum, K. (2018). Different types of distraction causing accidents. *Presentation at the DDI*.
- WHO. (2009). *Global Status Report on Road Safety: Time for Action; World Health Organization (WHO)*. Retrieved from Geneva:
- WHO. (2010). *Global Plan for the Decade of Action for Road Safety 2011–2020*. Retrieved from
- WHO. (2013). *Pedestrian Safety: A Road Safety Manual for Decision-Makers and Practitioners*. Retrieved from Geneva:
- WHO. (2015a). *Global Status Report on Road Safety*. Retrieved from Geneva:
- WHO. (2015b). *Global status report on road safety 2015* (9241565063). Retrieved from
- WHO. (2016). *Global status report on road safety. World Health Organization*. Retrieved from
- WHO. (2020). *European regional status report on road safety 2019*. Retrieved from
- WHO. (2021). *World Health Rankings live longer live better*. Retrieved from
- Williams, A. F. (2003). Teenage drivers: patterns of risk. *Journal of safety research*, 34(1), 5-15.
- Xie, Z., & Yan, J. (2008). Kernel Density Estimation of traffic accidents in a network space. *Computers, Environment and Urban Systems*, 32(5), 396-406.
- Yalcin, G., & Duzgun, H. S. (2015). Spatial analysis of two-wheeled vehicles traffic crashes: Osmaniye in Turkey. *KSCE journal of civil engineering*, 19(7), 2225-2232.
- Yamada, I., & Thill, J. C. (2004). Comparison of Planar and Network K-functions in Traffic Accident Analysis. *Journal of Transport Geography*, 149-158.
- Yamamoto, T., Hashiji, J., & Shankar, V. N. (2008). Underreporting in traffic accident data, bias in parameters and the structure of injury severity models. *Accident Analysis & Prevention*, 40(4), 1320-1329.
- Yu, Q., Jiang, J., & Yu, H. (2012). Research on the emergency response system of major dangerous chemical accident on highway based on the GIS. *Procedia Engineering*, 45, 716-721.
- Zhou, M., & Sisiopiku, V. P. (1997). Relationship between volume-to-capacity ratios and accident rates. *Transportation research record*, 1581(1), 47-52.