

TITLE capacitation_Teatre_Amigues



IMG Teatre.jpg

■ I've been to the theatre to see a play about mental health. Seeing people like me, talking about a situation like mine, makes me want to join a theatre group. I go along and talk to one of the actresses. She introduces me to the team and helps me to find associations in my neighbourhood.

■ **What about you?** Have you had the same experience?

A) Yes, it's happened to you too.

B) Not exactly... but you've experienced something similar.

C) Nothing like this has ever happened to you.

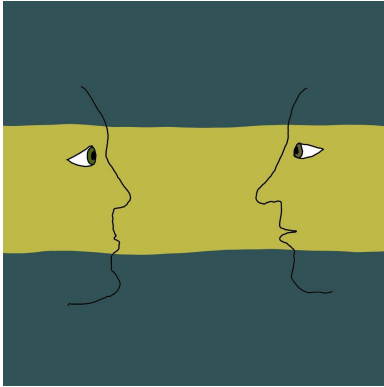
■ **And those around you...** Has anybody had the same experience?

A) Yes, it's happened to someone around you.

B) Not exactly... but someone around you has experienced something similar.

C) As far as you know, it hasn't happened to anyone around you.

TITLE Obrir_camí



IMG Obrir_camí.jpg

■ When seeing and hearing are on the same level, this can arouse trust and loving commitment. Then a path opens up.

■ **What about you?** Have you had the same experience?

A) Yes, it's happened to you too.

B) Not exactly... but you've experienced something similar.

C) Nothing like this has ever happened to you.

■ **And those around you...** Has anybody had the same experience?

A) Yes, it's happened to someone around you.

B) Not exactly... but someone around you has experienced something similar.

C) As far as you know, it hasn't happened to anyone around you.