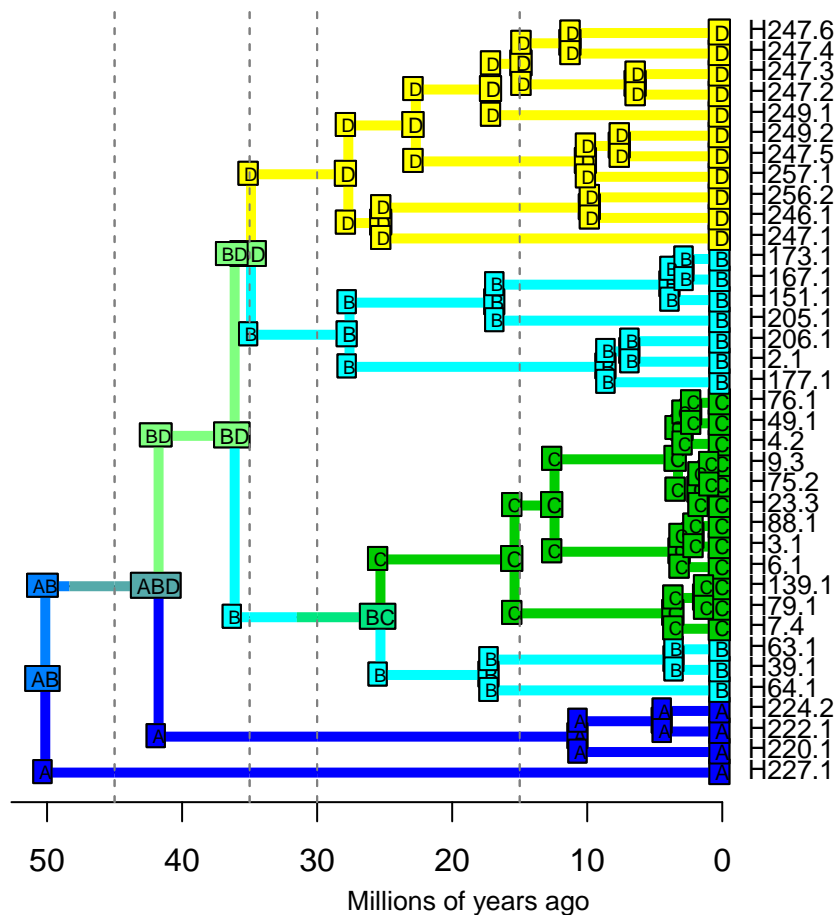
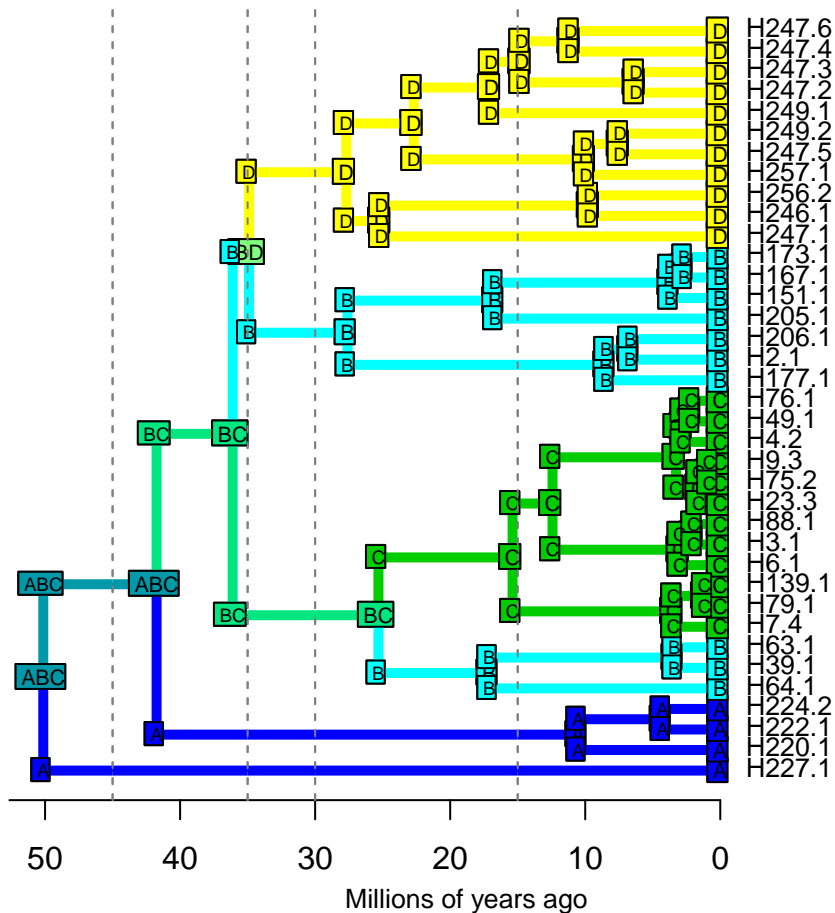


DEC – Stochastic Map #1/100

ancstates: global optim, 3 areas max. d=0.0119; e=0; x=-0.5308; j=0; LnL=-16.34

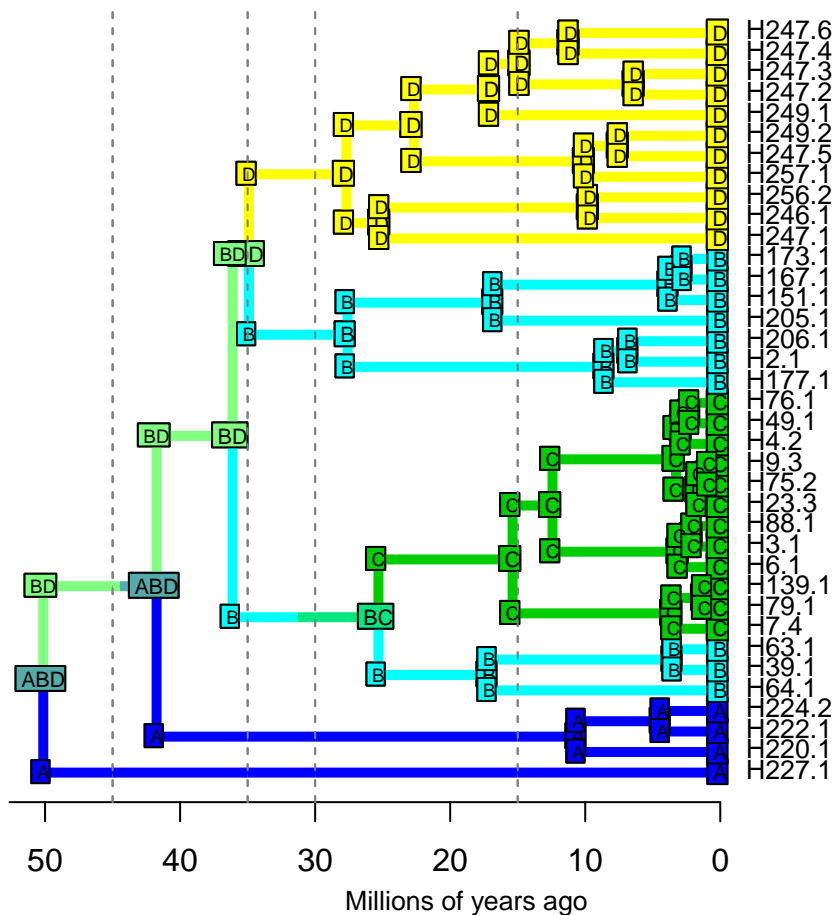


DEC – Stochastic Map #2/100
ancstates: global optim, 3 areas max. d=0.0119; e=0; x=-0.5308; j=0; LnL=-16.34



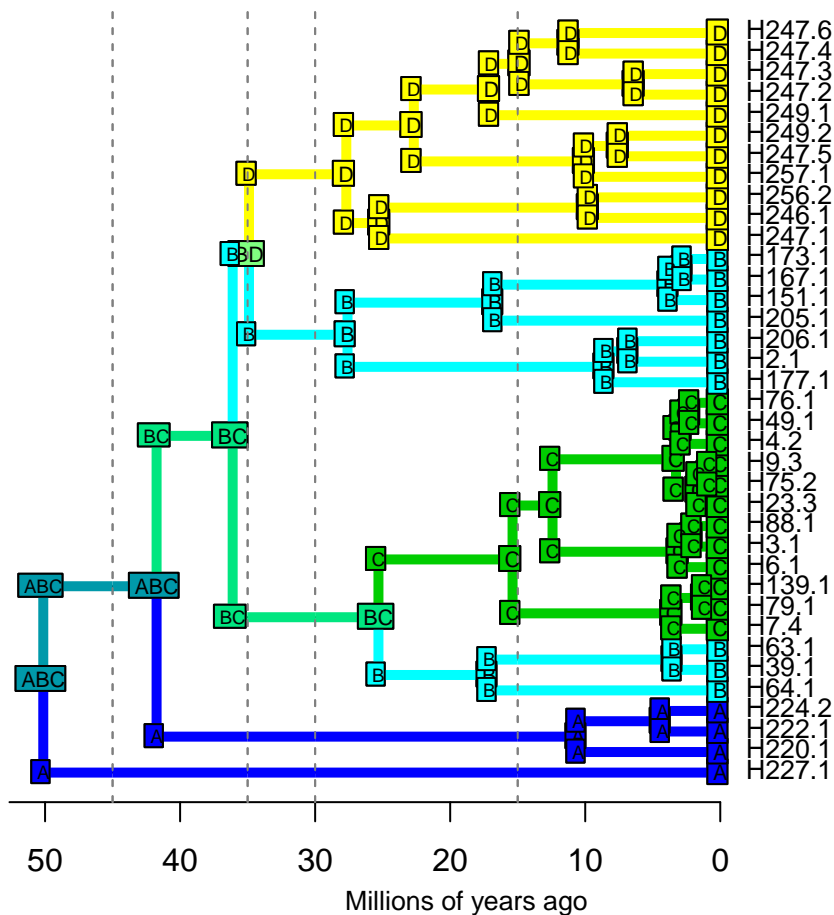
DEC – Stochastic Map #4/100

ancstates: global optim, 3 areas max. d=0.0119; e=0; x=-0.5308; j=0; LnL=-16.34



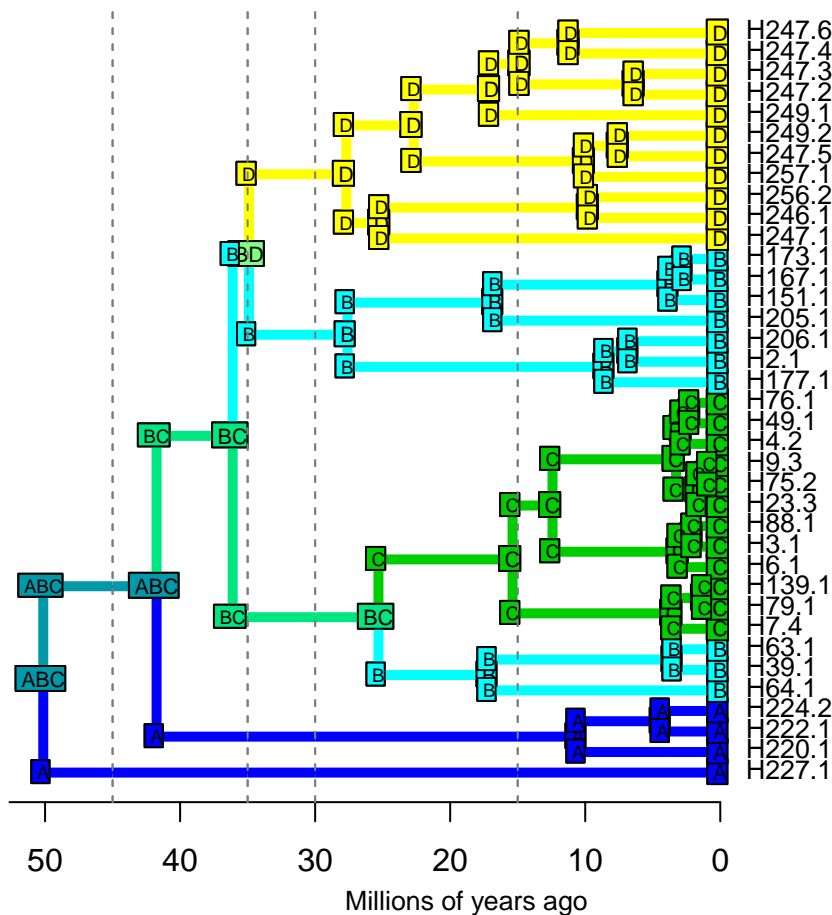
DEC – Stochastic Map #5/100

ancstates: global optim, 3 areas max. d=0.0119; e=0; x=-0.5308; j=0; LnL=-16.34

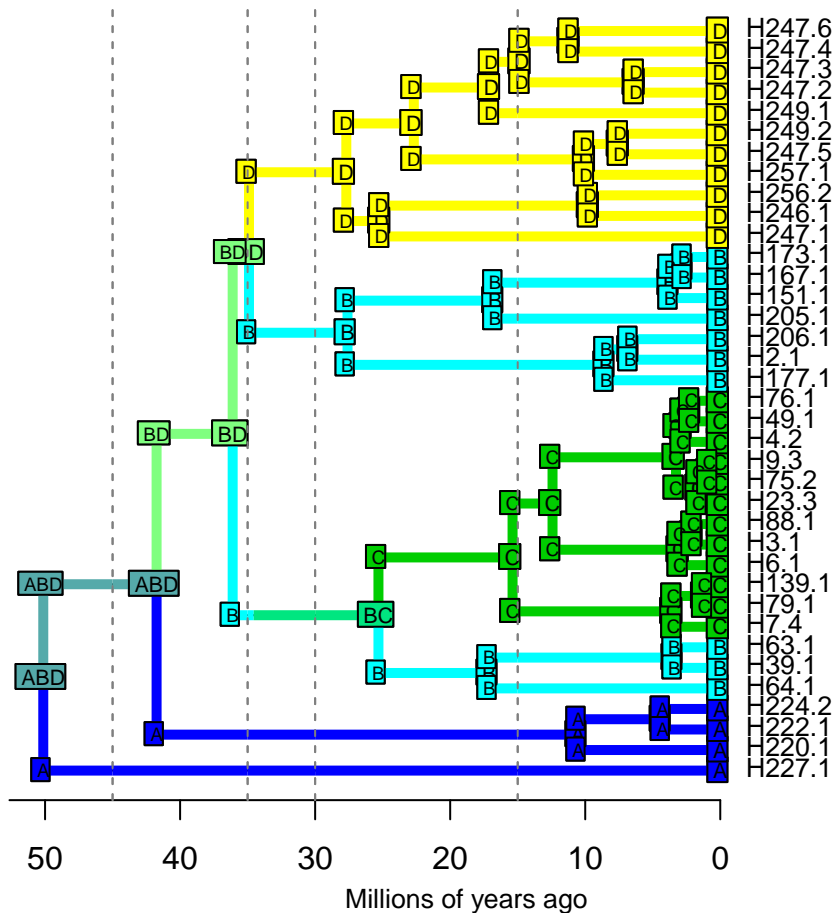


DEC – Stochastic Map #6/100

ancstates: global optim, 3 areas max. d=0.0119; e=0; x=-0.5308; j=0; LnL=-16.34

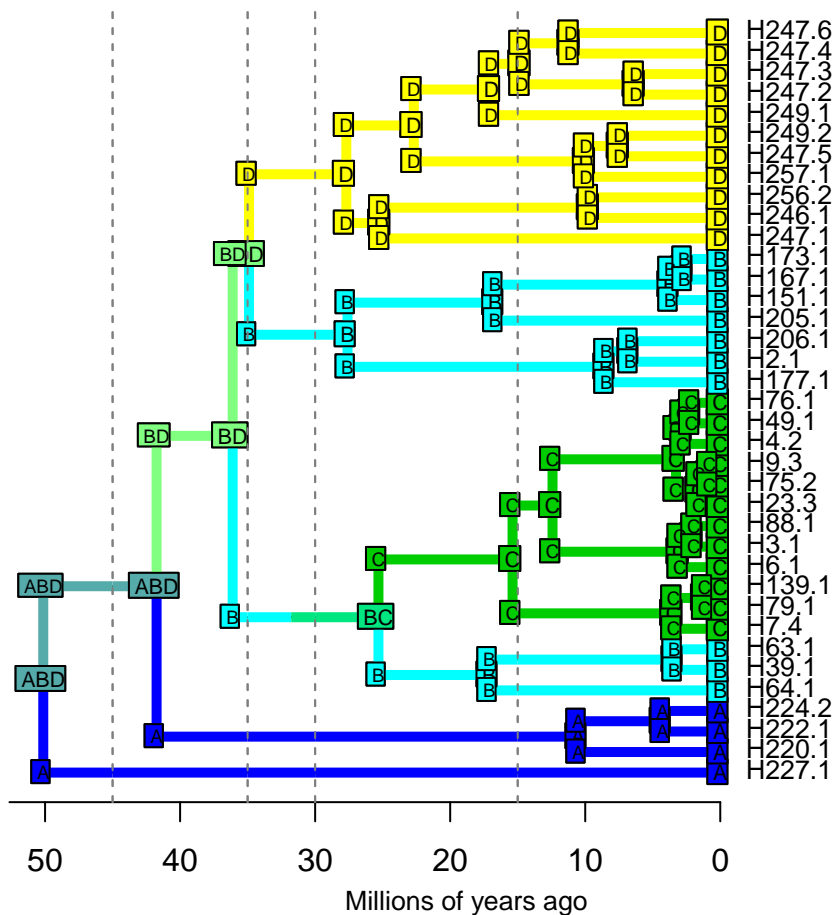


ancstates: global optim, 3 areas max. d=0.0119; e=0; x=-0.5308; j=0; LnL=-16.34



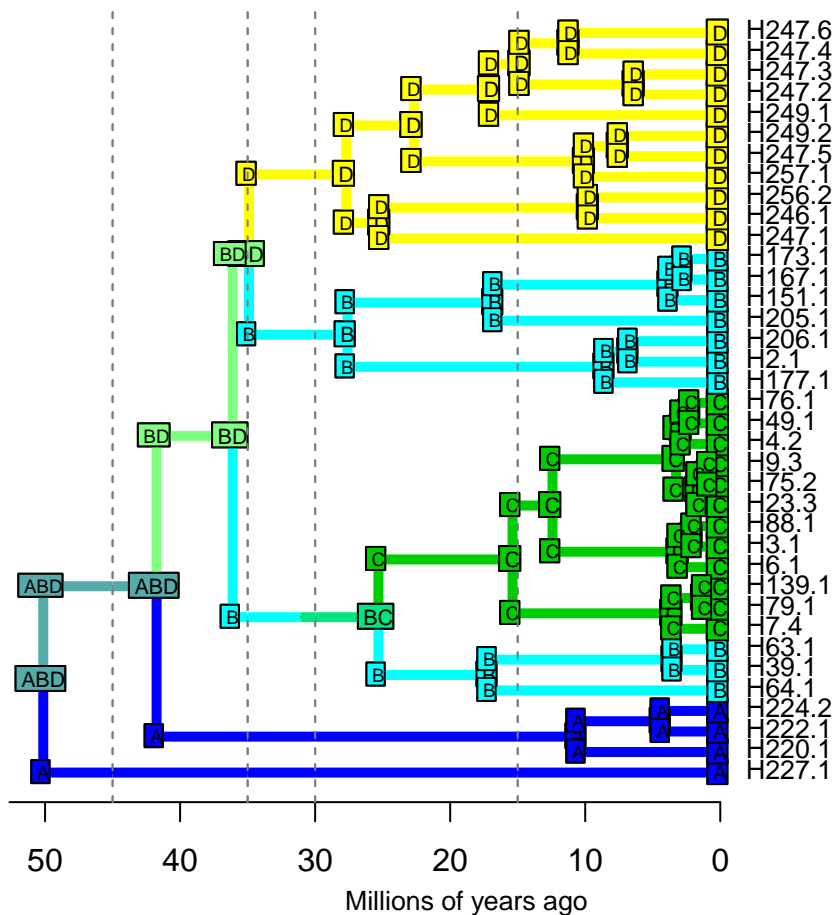
DEC – Stochastic Map #10/100

ancstates: global optim, 3 areas max. d=0.0119; e=0; x=-0.5308; j=0; LnL=-16.34



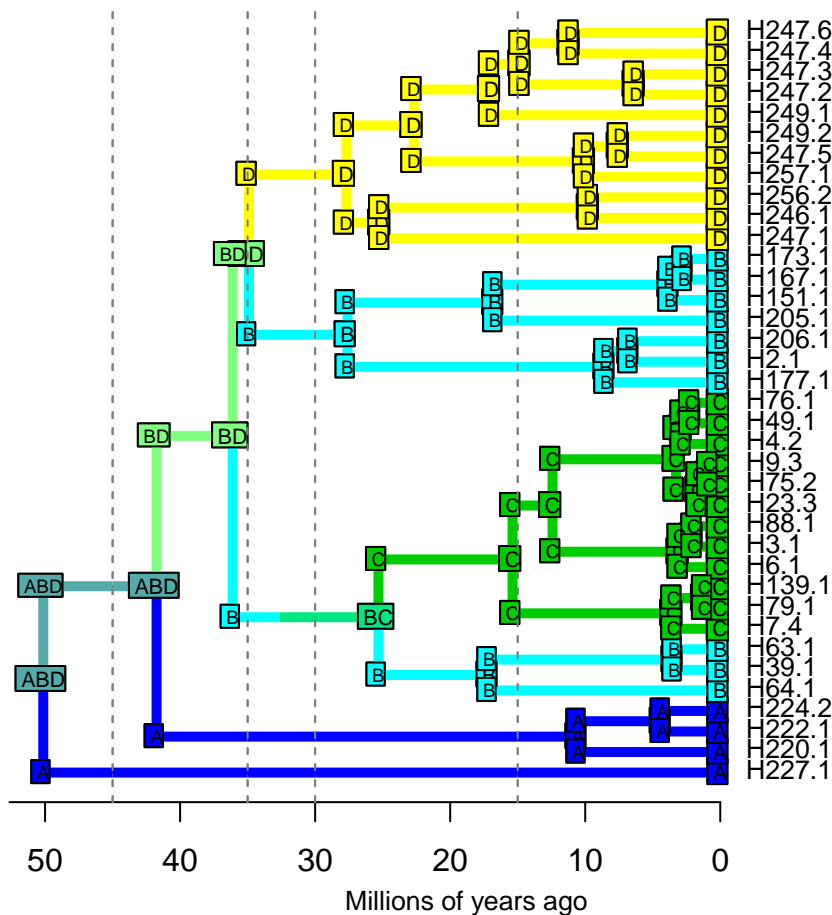
DEC – Stochastic Map #11/100

ancstates: global optim, 3 areas max. d=0.0119; e=0; x=-0.5308; j=0; LnL=-16.34



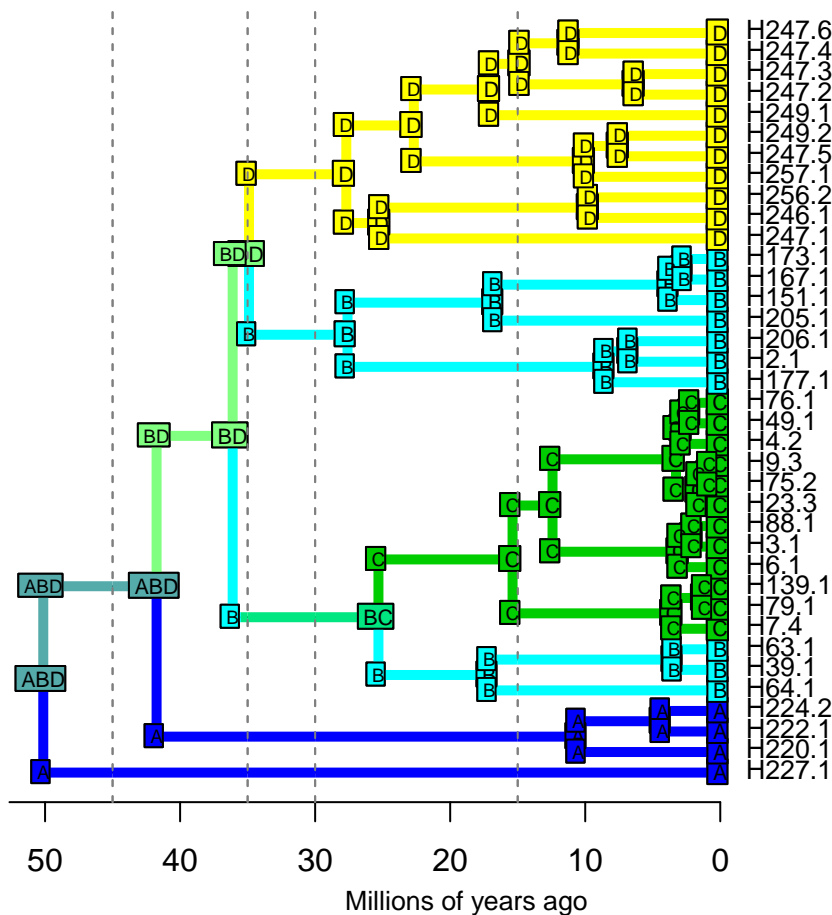
DEC – Stochastic Map #12/100

ancstates: global optim, 3 areas max. d=0.0119; e=0; x=-0.5308; j=0; LnL=-16.34



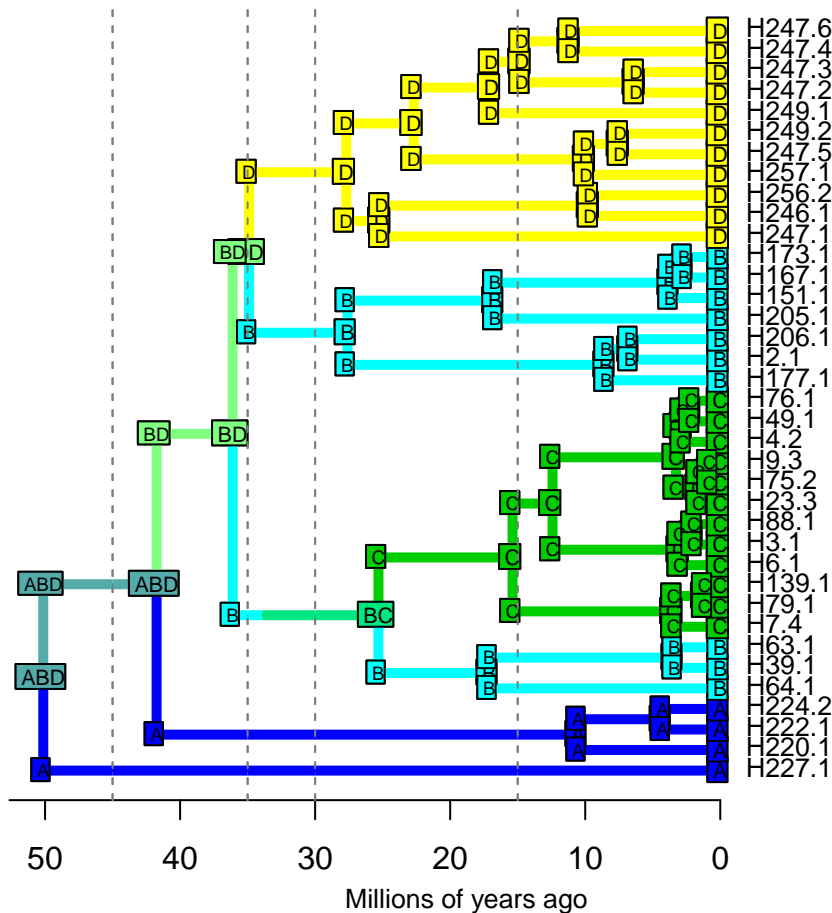
DEC – Stochastic Map #13/100

ancstates: global optim, 3 areas max. d=0.0119; e=0; x=-0.5308; j=0; LnL=-16.34



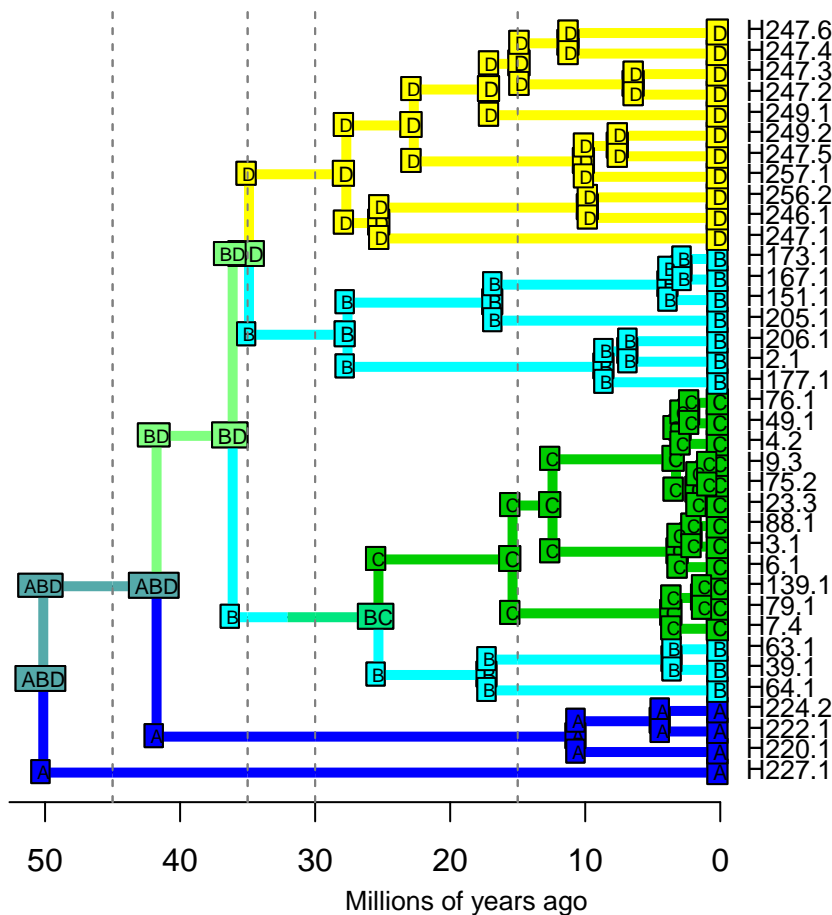
DEC – Stochastic Map #14/100

ancstates: global optim, 3 areas max. d=0.0119; e=0; x=-0.5308; j=0; LnL=-16.34



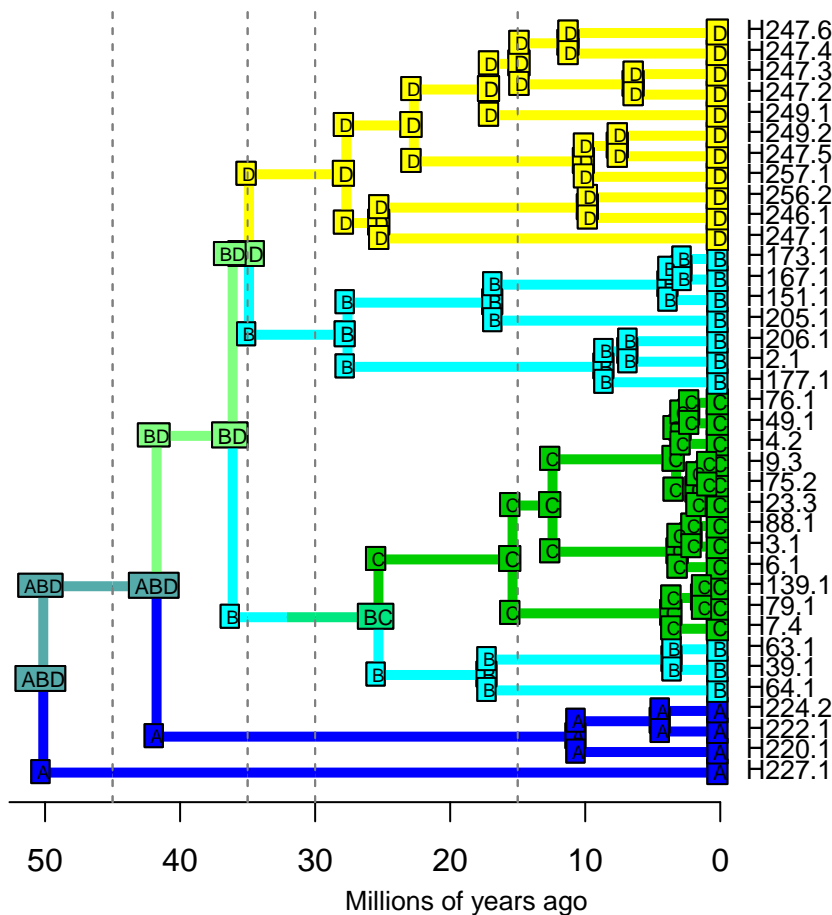
DEC – Stochastic Map #15/100

ancstates: global optim, 3 areas max. d=0.0119; e=0; x=-0.5308; j=0; LnL=-16.34



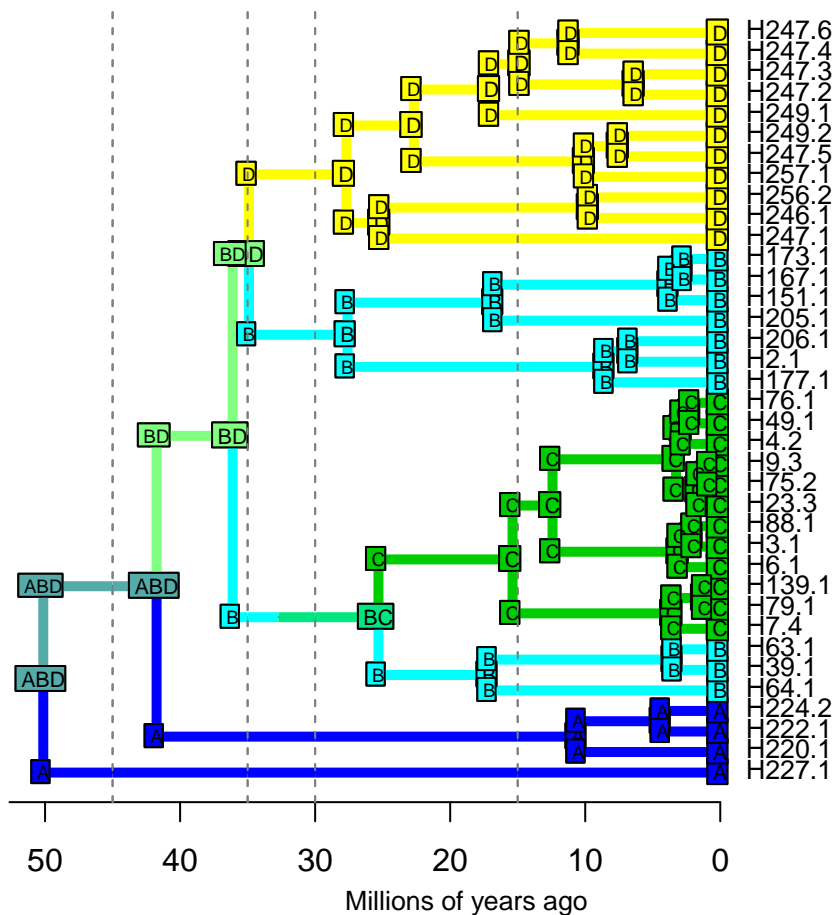
DEC – Stochastic Map #17/100

ancstates: global optim, 3 areas max. d=0.0119; e=0; x=-0.5308; j=0; LnL=-16.34



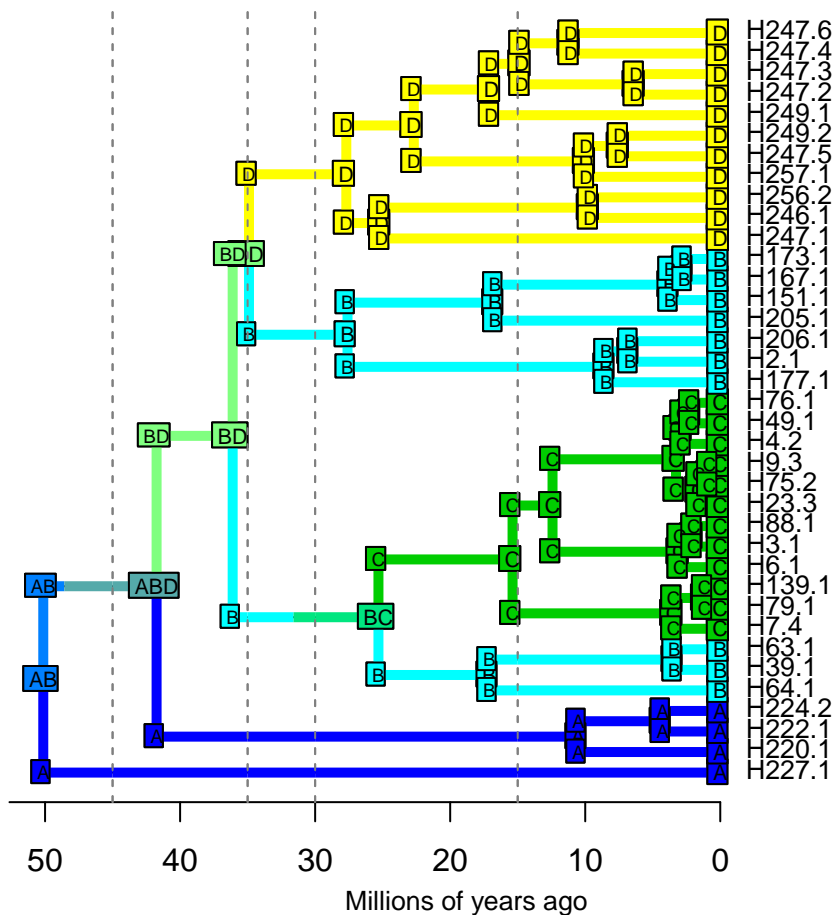
DEC – Stochastic Map #18/100

ancstates: global optim, 3 areas max. d=0.0119; e=0; x=-0.5308; j=0; LnL=-16.34



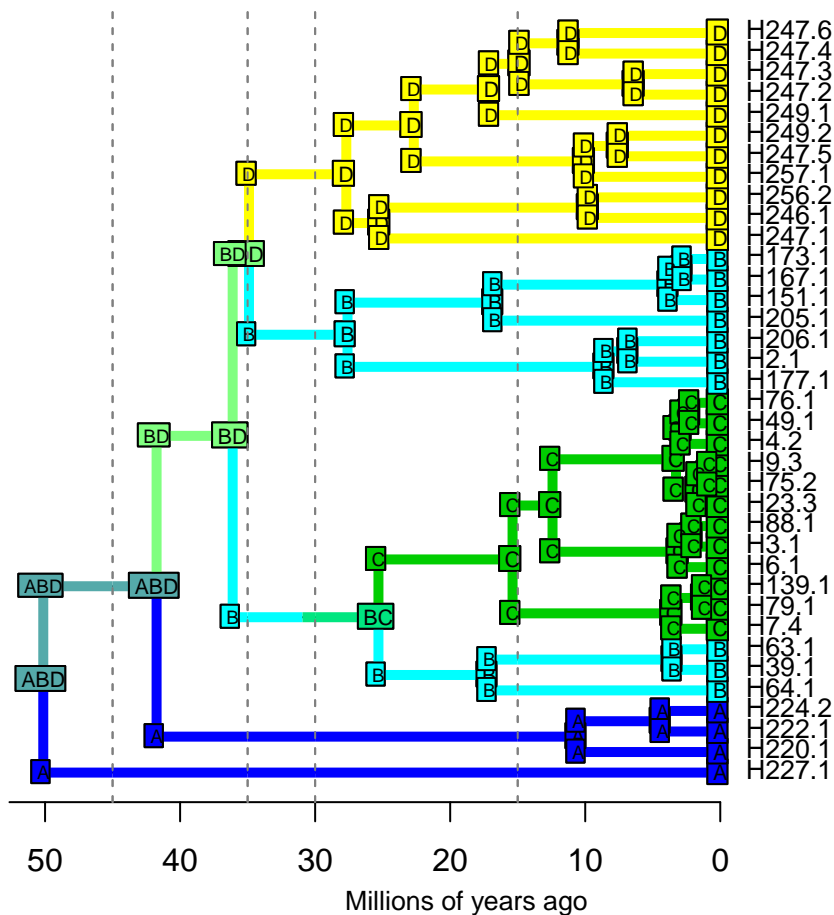
DEC – Stochastic Map #19/100

ancstates: global optim, 3 areas max. d=0.0119; e=0; x=-0.5308; j=0; LnL=-16.34



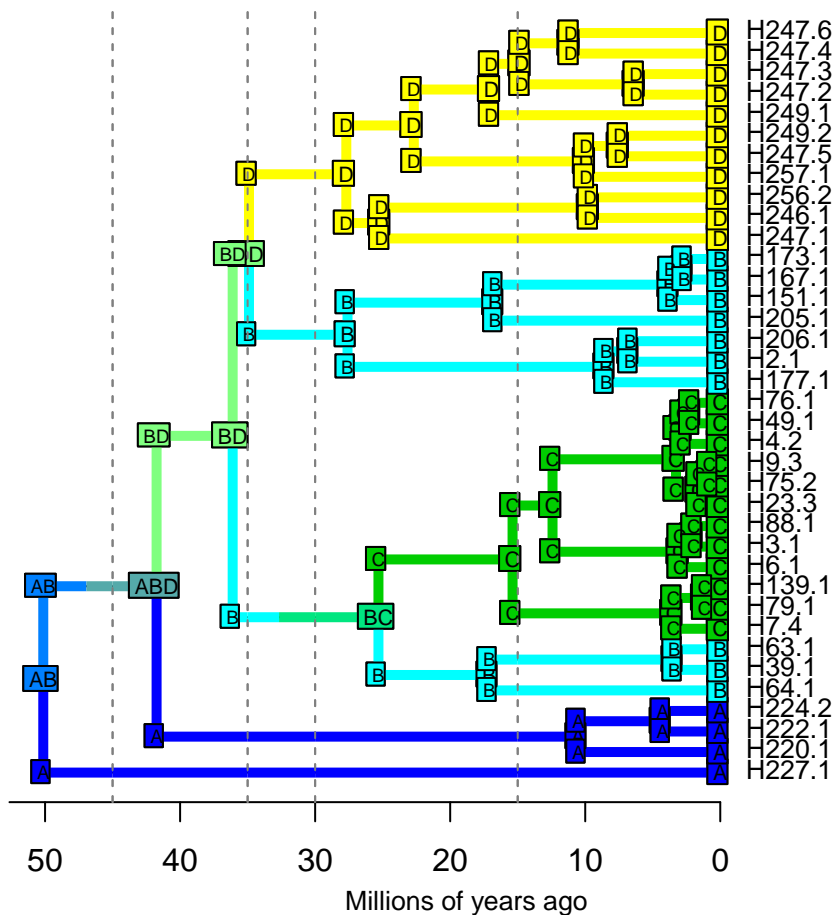
DEC – Stochastic Map #21/100

ancstates: global optim, 3 areas max. d=0.0119; e=0; x=-0.5308; j=0; LnL=-16.34



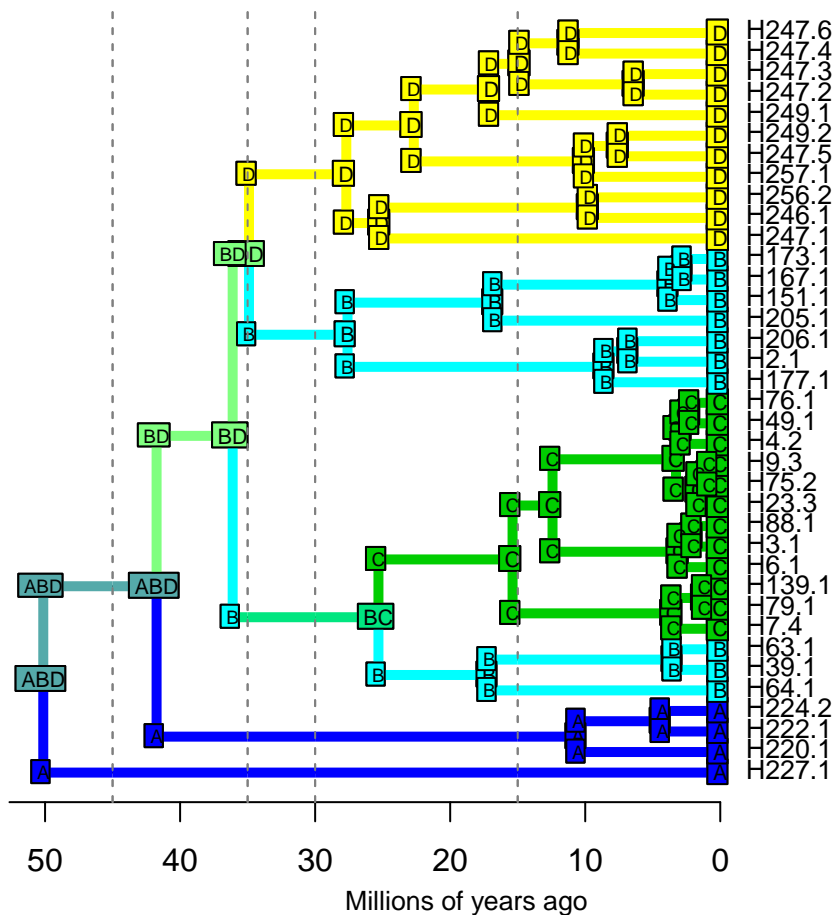
DEC – Stochastic Map #22/100

ancstates: global optim, 3 areas max. d=0.0119; e=0; x=-0.5308; j=0; LnL=-16.34



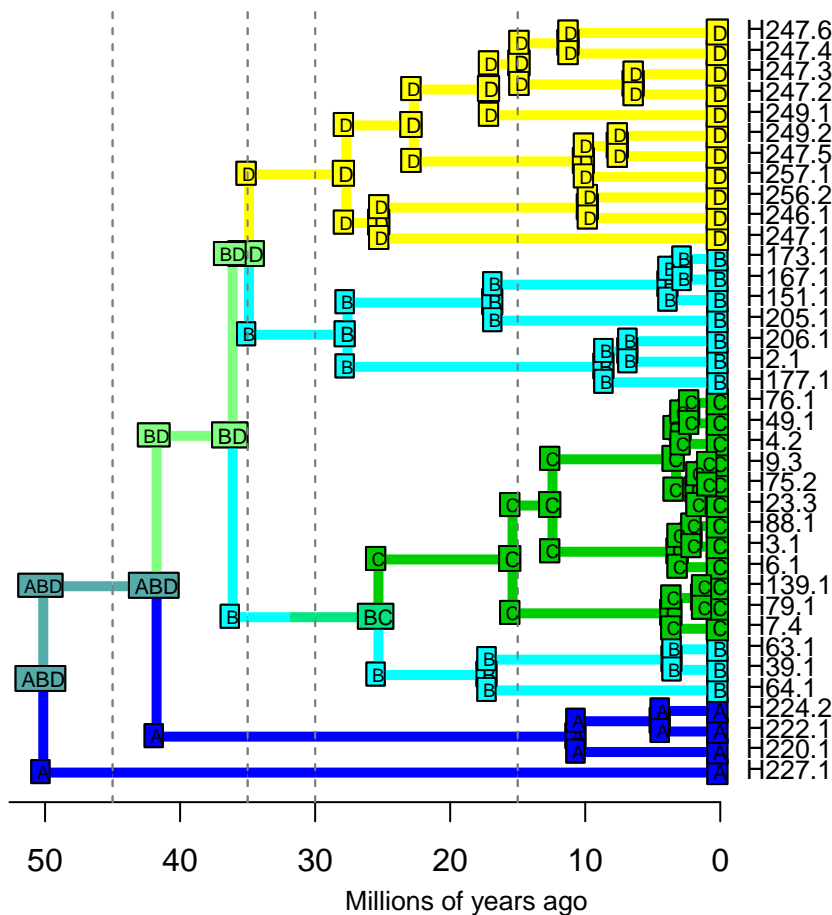
DEC – Stochastic Map #23/100

ancstates: global optim, 3 areas max. d=0.0119; e=0; x=-0.5308; j=0; LnL=-16.34



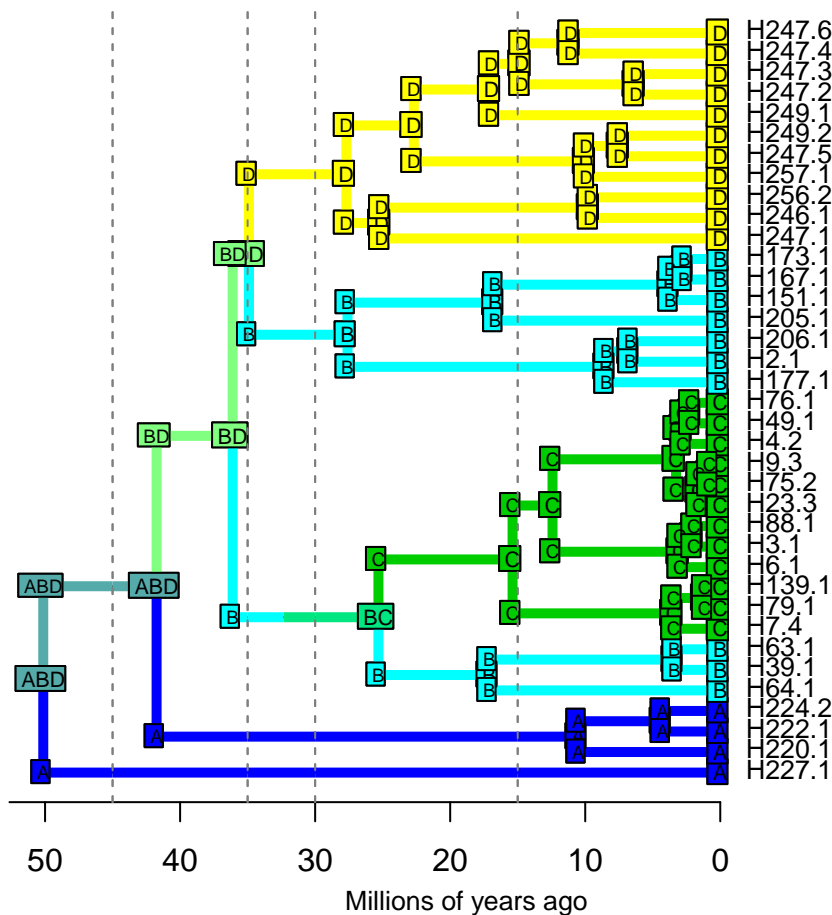
DEC – Stochastic Map #24/100

ancstates: global optim, 3 areas max. d=0.0119; e=0; x=-0.5308; j=0; LnL=-16.34



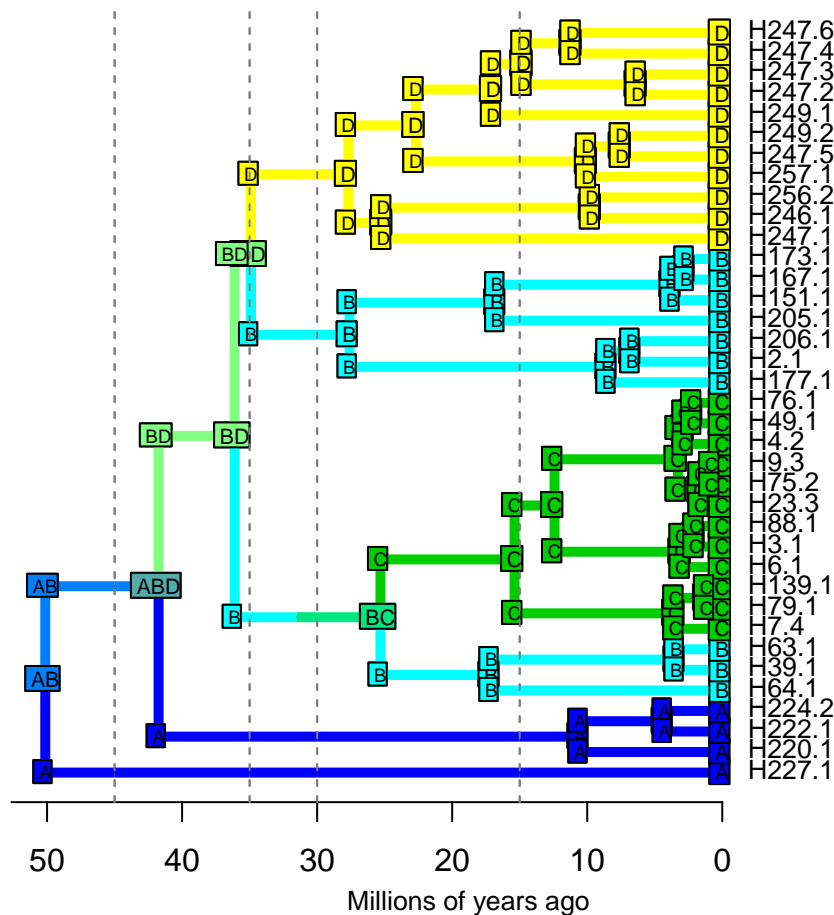
DEC – Stochastic Map #25/100

ancstates: global optim, 3 areas max. d=0.0119; e=0; x=-0.5308; j=0; LnL=-16.34



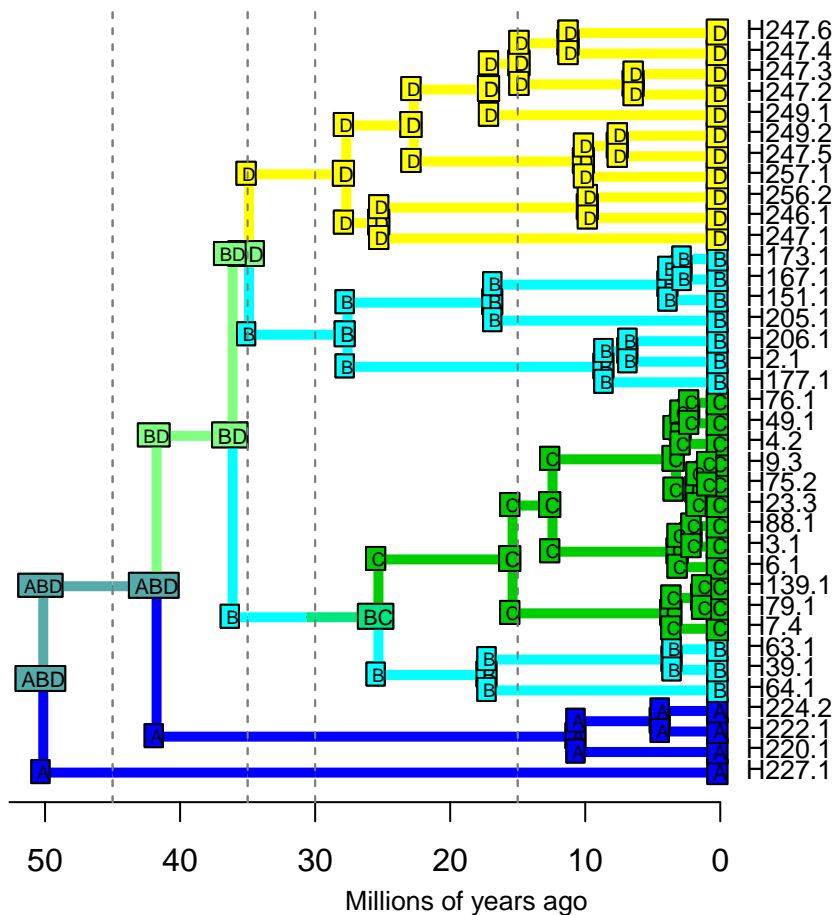
DEC – Stochastic Map #26/100

ancstates: global optim, 3 areas max. d=0.0119; e=0; x=-0.5308; j=0; LnL=-16.34



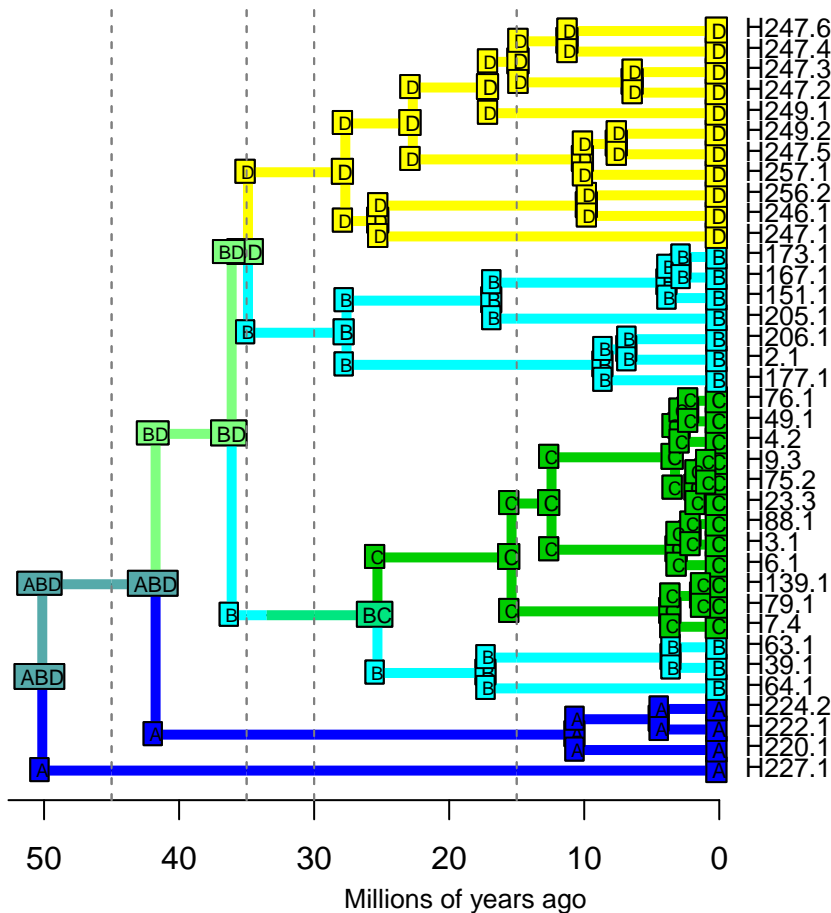
DEC – Stochastic Map #27/100

ancstates: global optim, 3 areas max. d=0.0119; e=0; x=-0.5308; j=0; LnL=-16.34



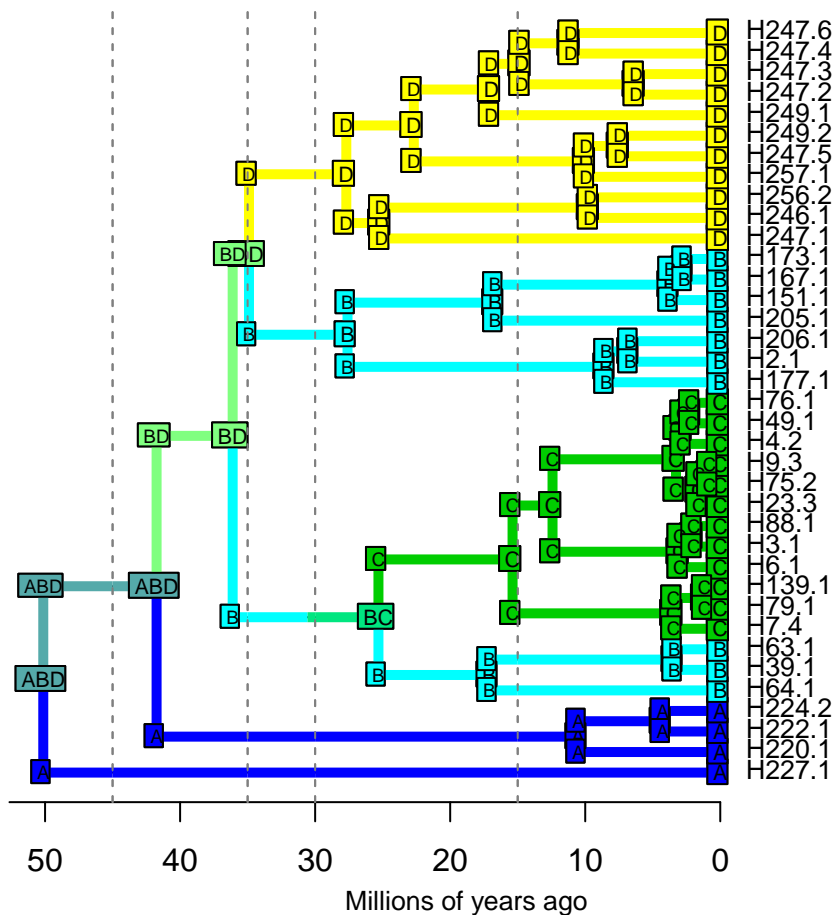
DEC – Stochastic Map #28/100

ancstates: global optim, 3 areas max. d=0.0119; e=0; x=-0.5308; j=0; LnL=-16.34



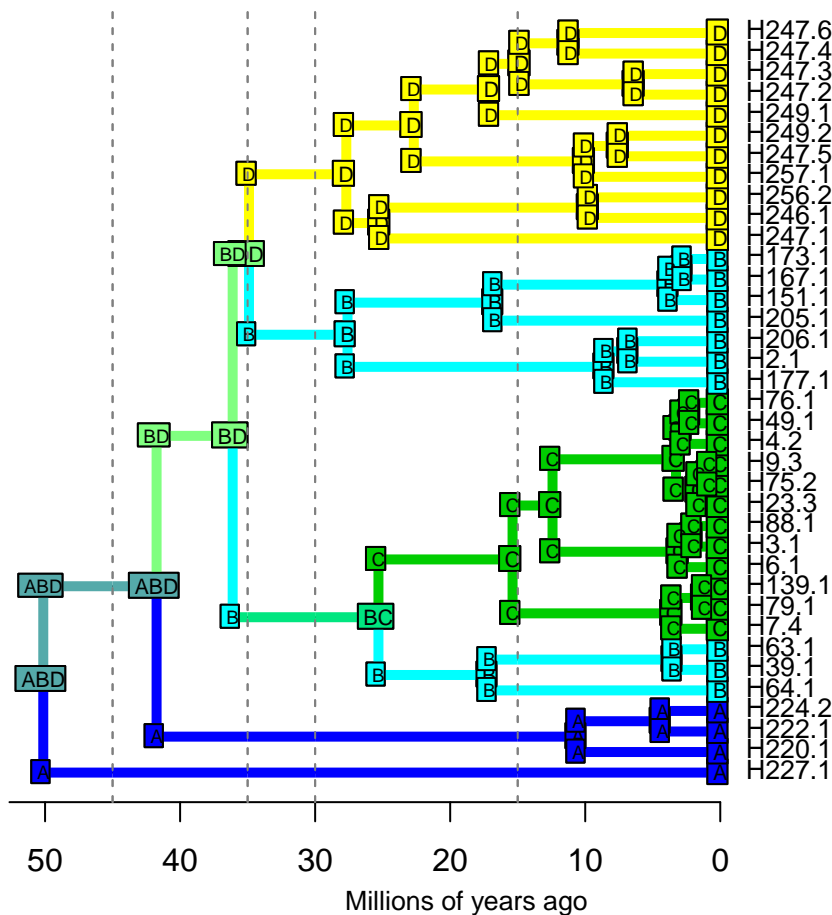
DEC – Stochastic Map #29/100

ancstates: global optim, 3 areas max. d=0.0119; e=0; x=-0.5308; j=0; LnL=-16.34



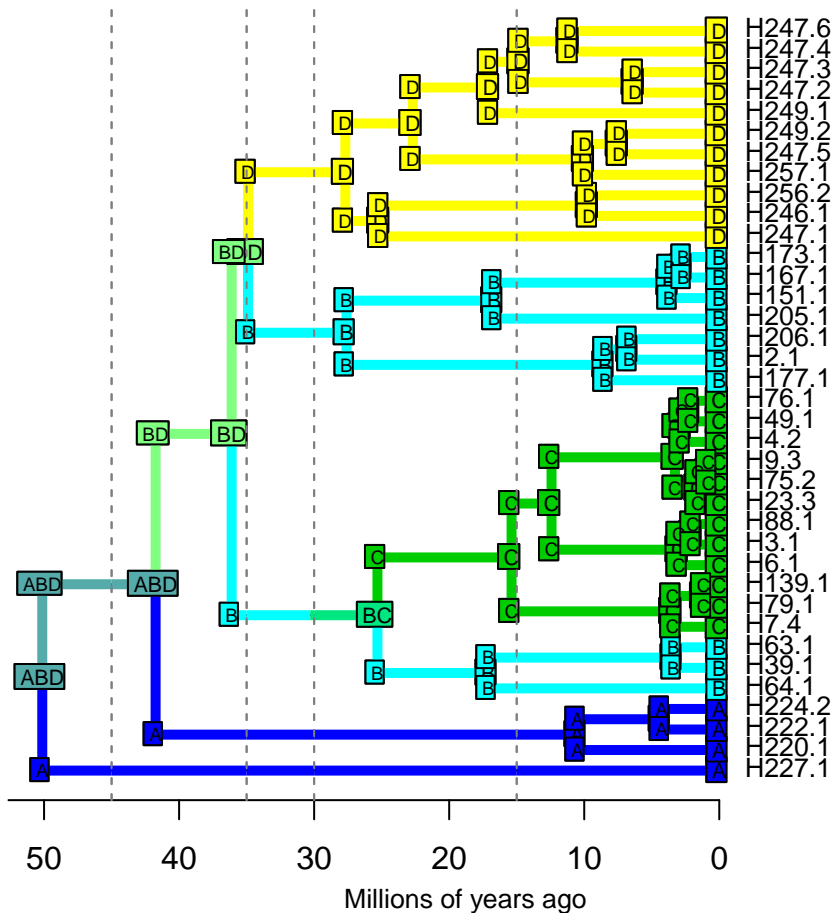
DEC – Stochastic Map #30/100

ancstates: global optim, 3 areas max. d=0.0119; e=0; x=-0.5308; j=0; LnL=-16.34



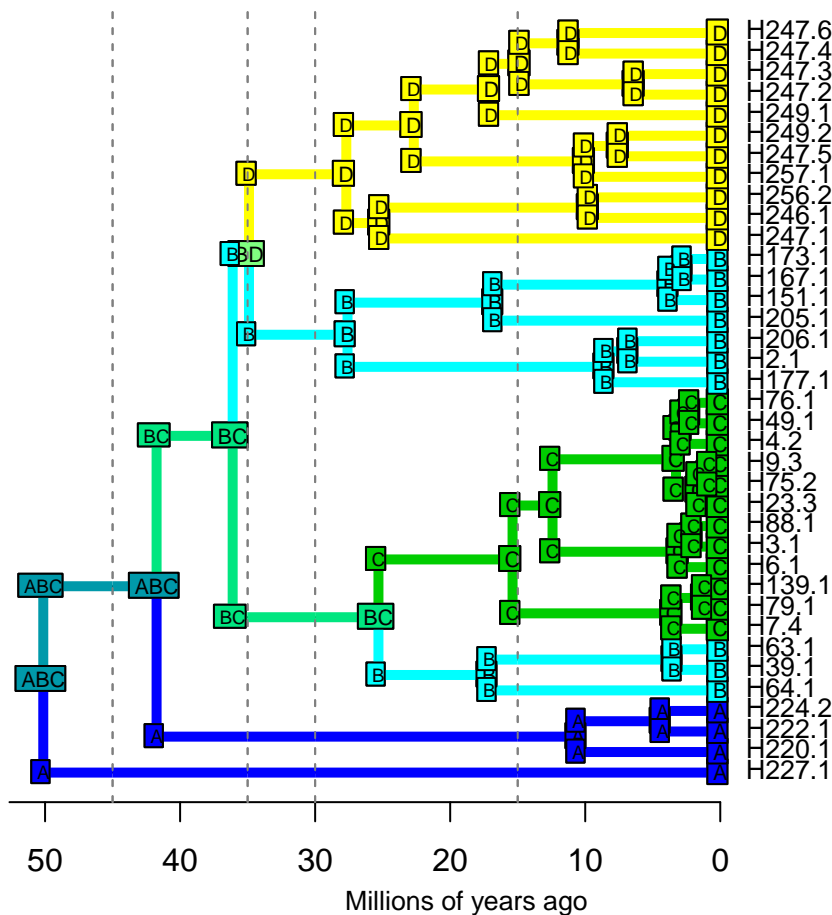
DEC – Stochastic Map #31/100

ancstates: global optim, 3 areas max. d=0.0119; e=0; x=-0.5308; j=0; LnL=-16.34

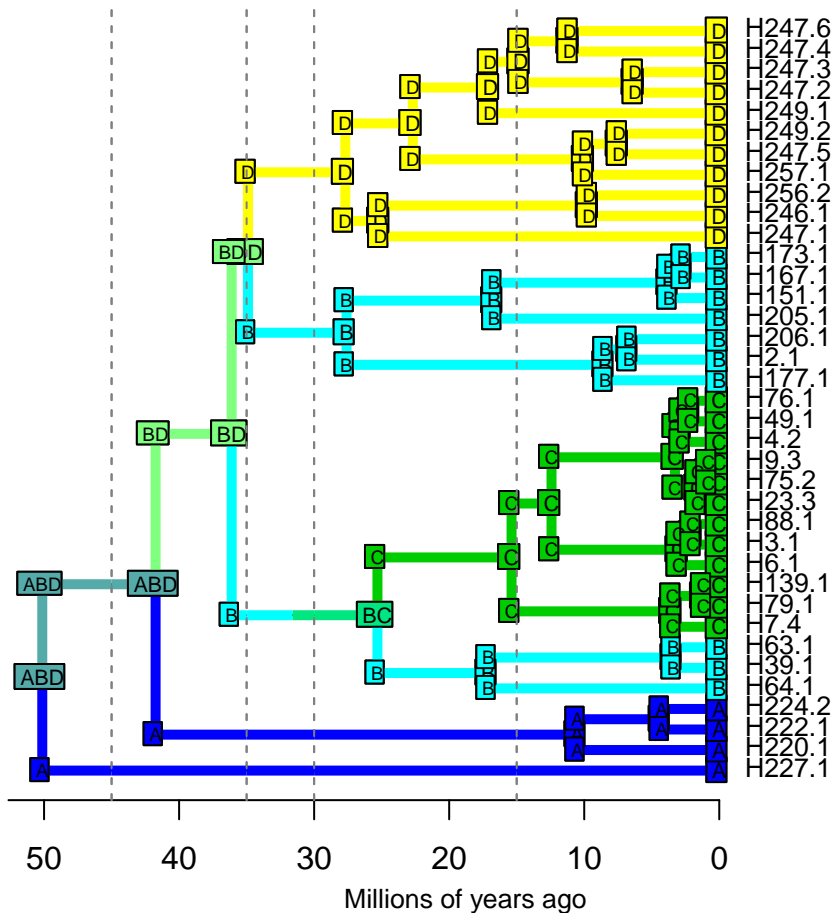


DEC – Stochastic Map #32/100

ancstates: global optim, 3 areas max. d=0.0119; e=0; x=-0.5308; j=0; LnL=-16.34

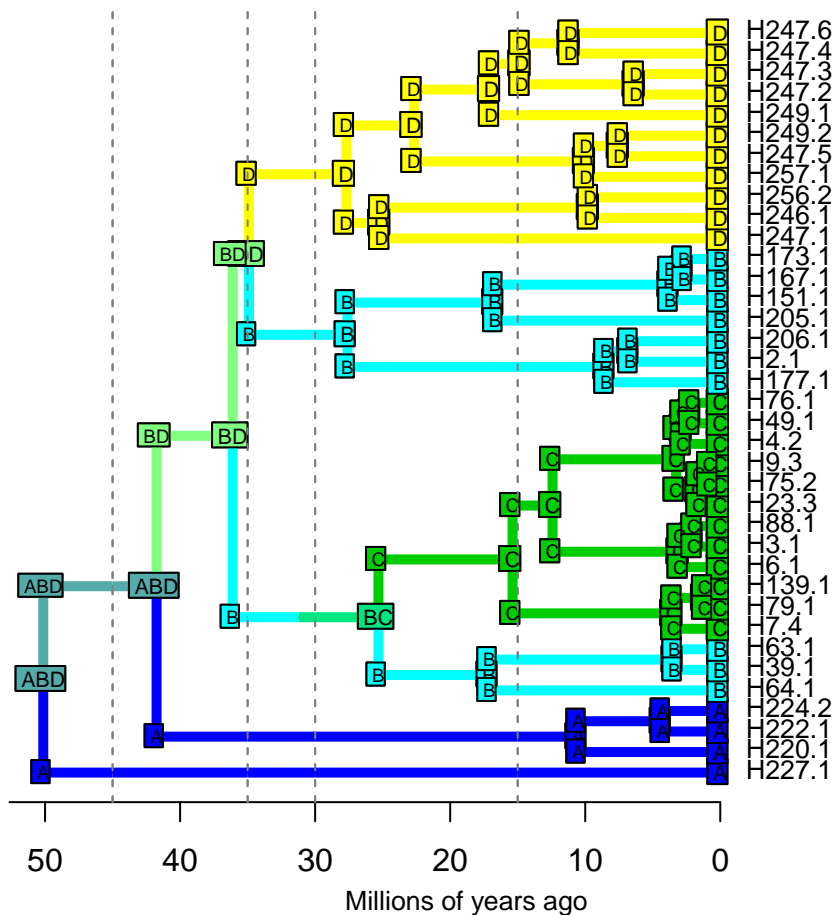


DEC – Stochastic Map #35/100



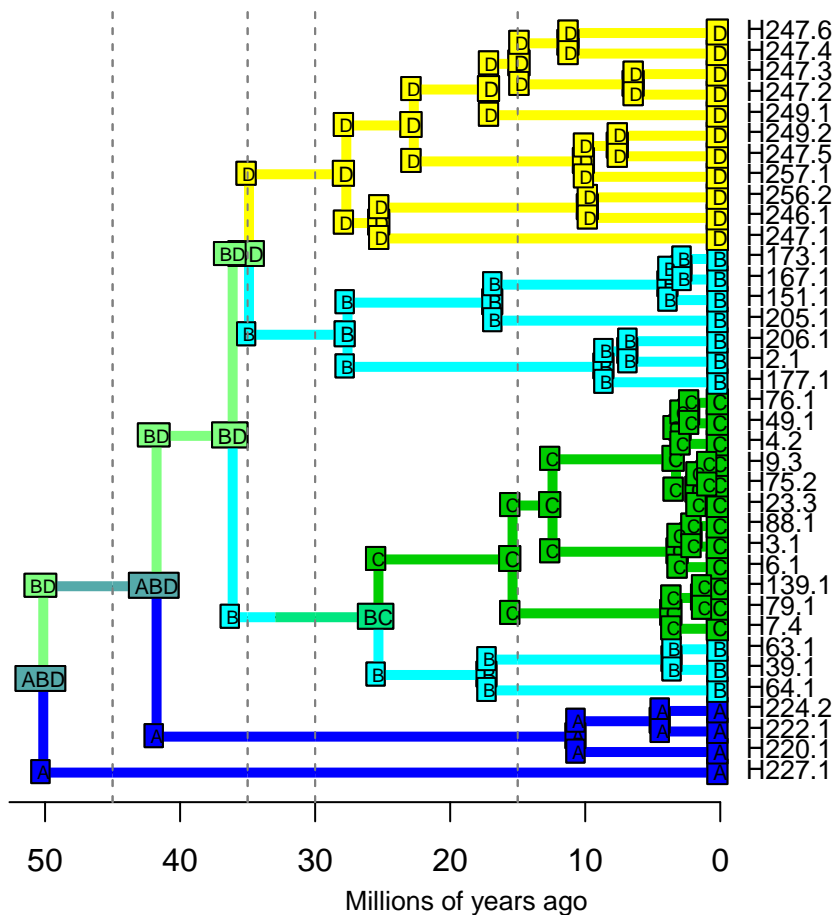
DEC – Stochastic Map #36/100

ancstates: global optim, 3 areas max. d=0.0119; e=0; x=-0.5308; j=0; LnL=-16.34



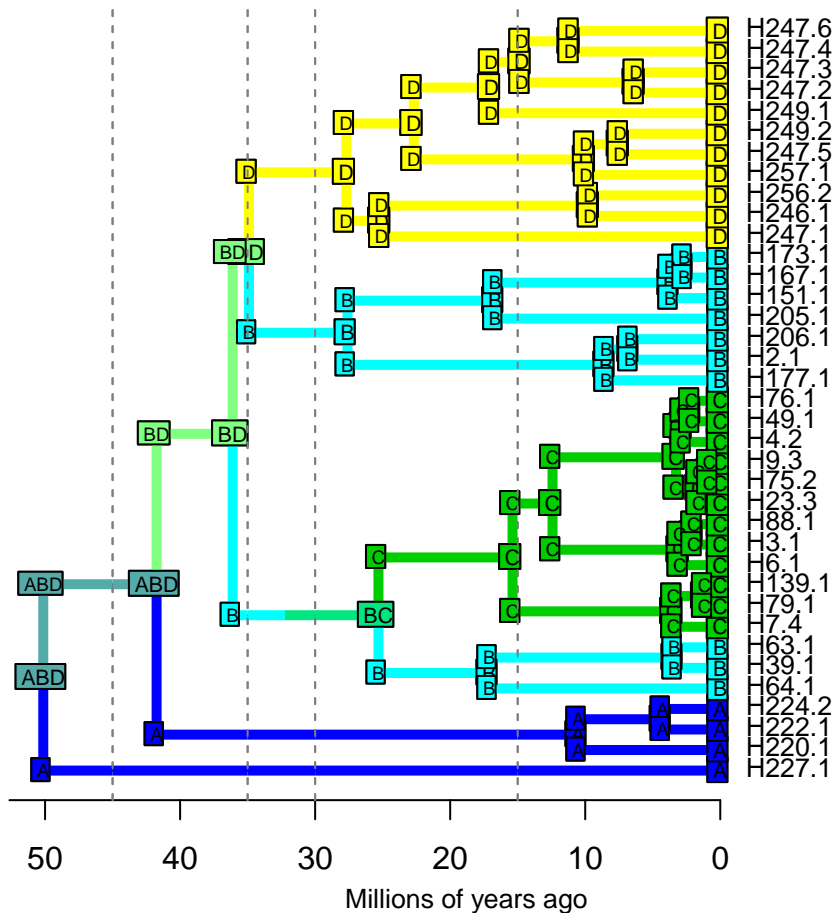
DEC – Stochastic Map #37/100

ancstates: global optim, 3 areas max. d=0.0119; e=0; x=-0.5308; j=0; LnL=-16.34



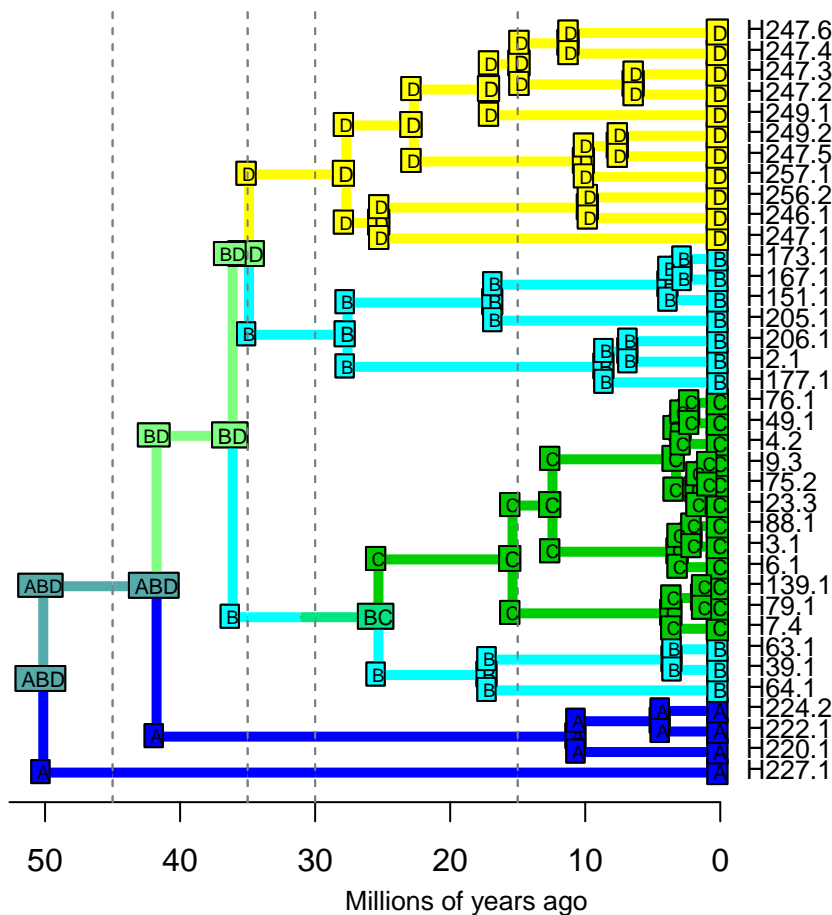
DEC – Stochastic Map #38/100

ancstates: global optim, 3 areas max. d=0.0119; e=0; x=-0.5308; j=0; LnL=-16.34



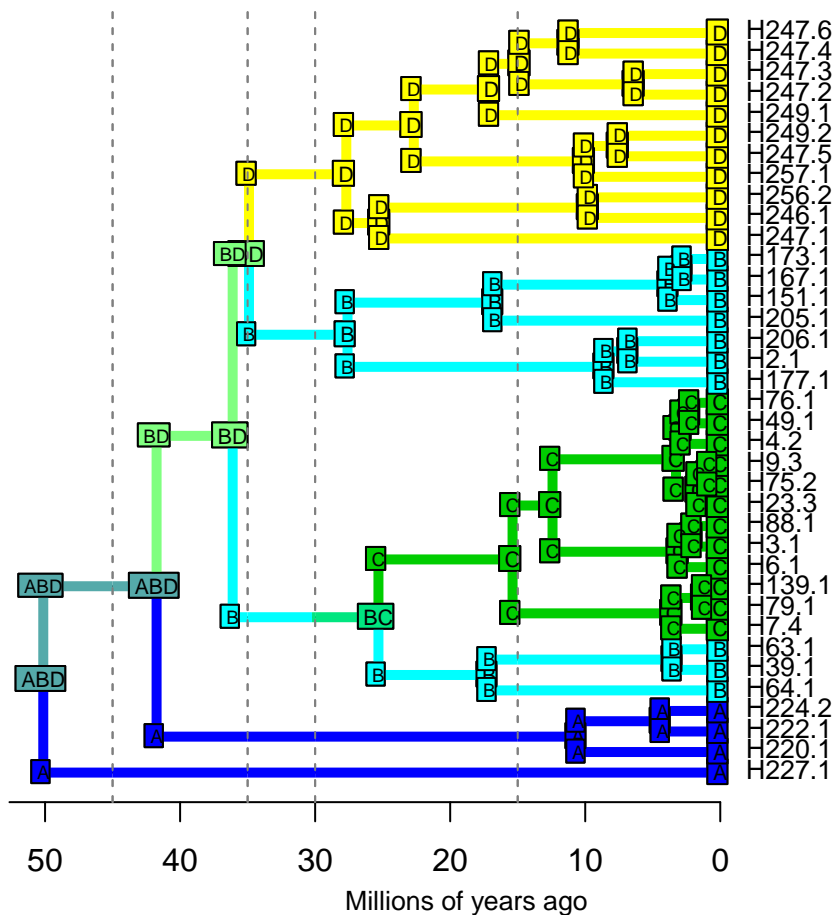
DEC – Stochastic Map #39/100

ancstates: global optim, 3 areas max. d=0.0119; e=0; x=-0.5308; j=0; LnL=-16.34

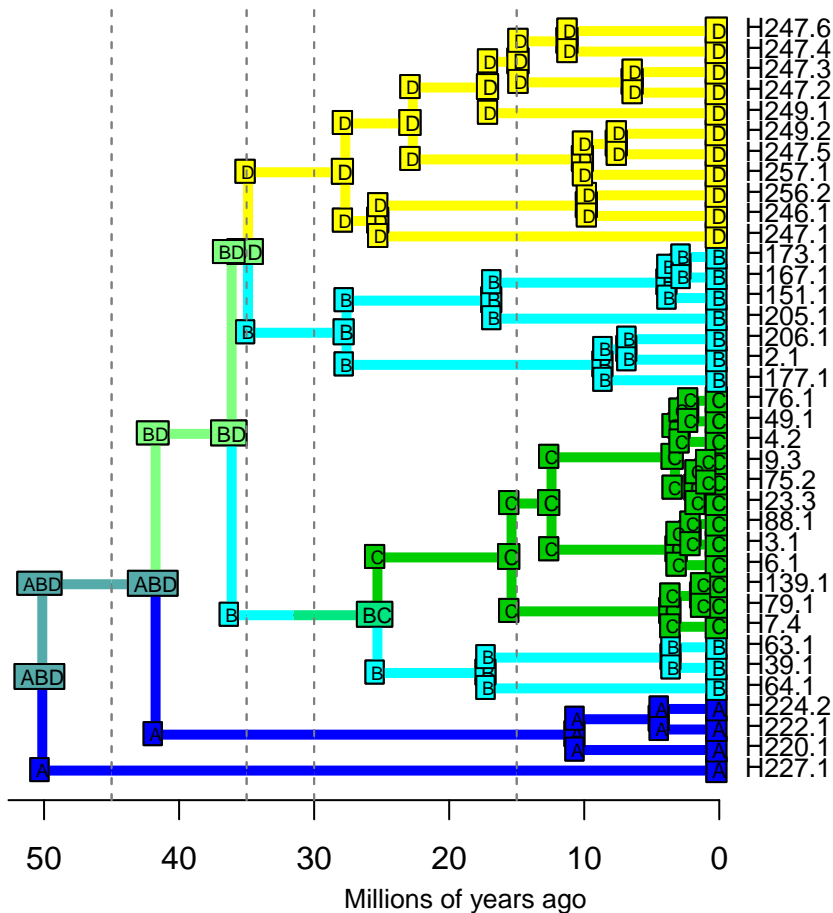


DEC – Stochastic Map #40/100

ancstates: global optim, 3 areas max. d=0.0119; e=0; x=-0.5308; j=0; LnL=-16.34

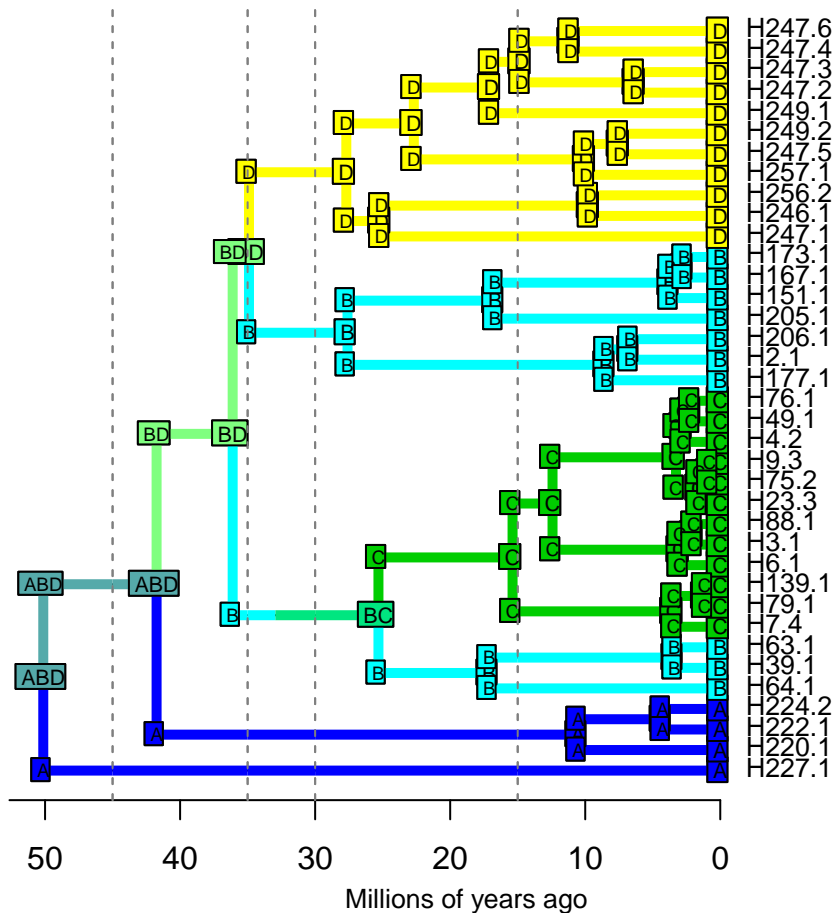


DEC – Stochastic Map #41/100



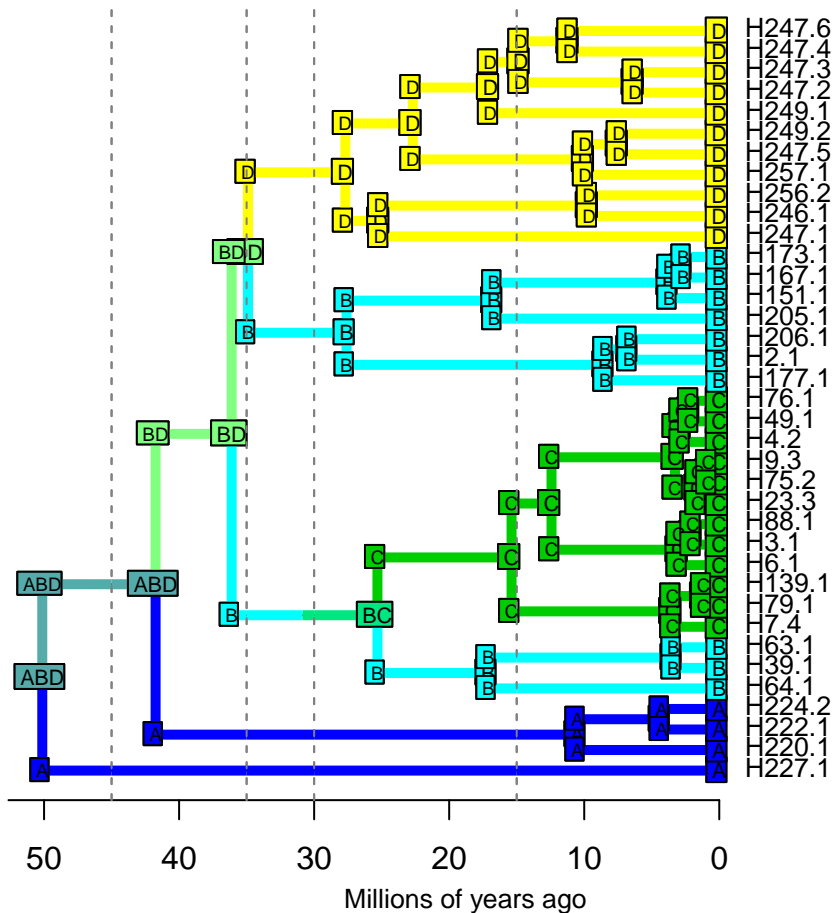
DEC – Stochastic Map #42/100

ancstates: global optim, 3 areas max. d=0.0119; e=0; x=-0.5308; j=0; LnL=-16.34



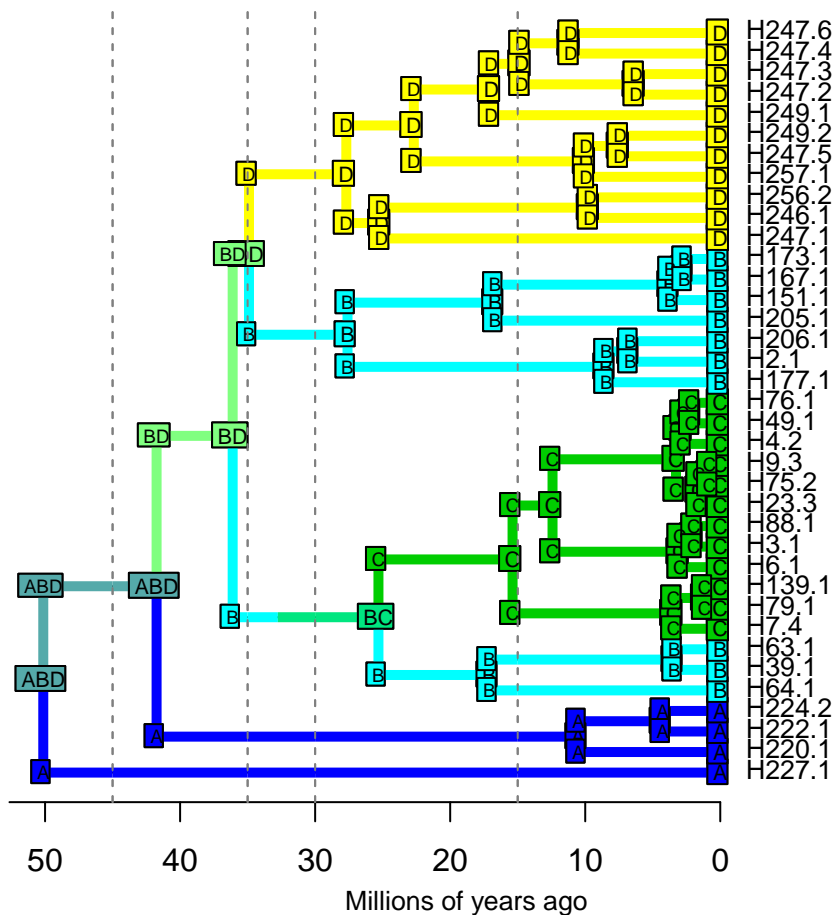
DEC – Stochastic Map #43/100

ancstates: global optim, 3 areas max. d=0.0119; e=0; x=-0.5308; j=0; LnL=-16.34



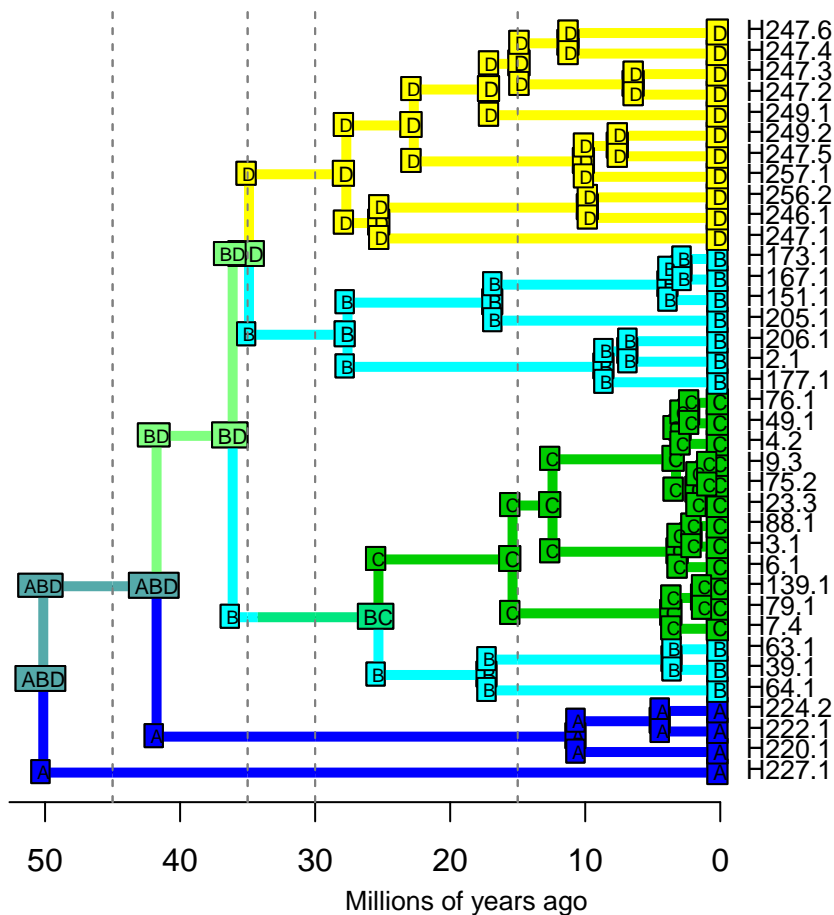
DEC – Stochastic Map #44/100

ancstates: global optim, 3 areas max. d=0.0119; e=0; x=-0.5308; j=0; LnL=-16.34

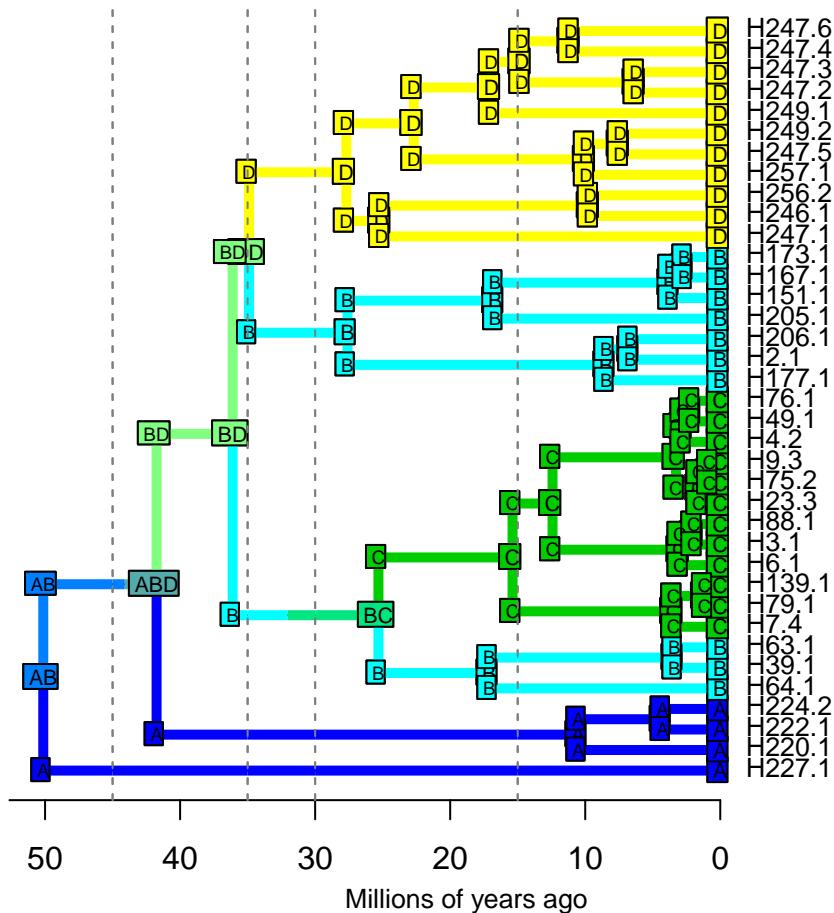


DEC – Stochastic Map #45/100

ancstates: global optim, 3 areas max. d=0.0119; e=0; x=-0.5308; j=0; LnL=-16.34

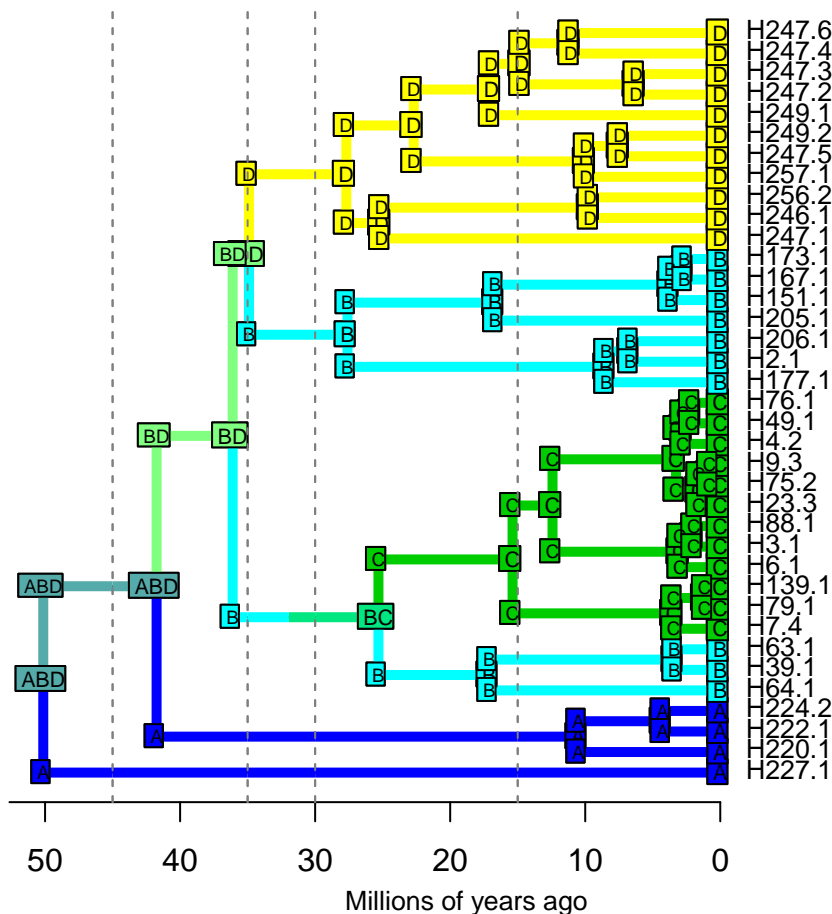


DEC – Stochastic Map #47/100
ancstates: global optim, 3 areas max. d=0.0119; e=0; x=-0.5308; j=0; LnL=-16.34



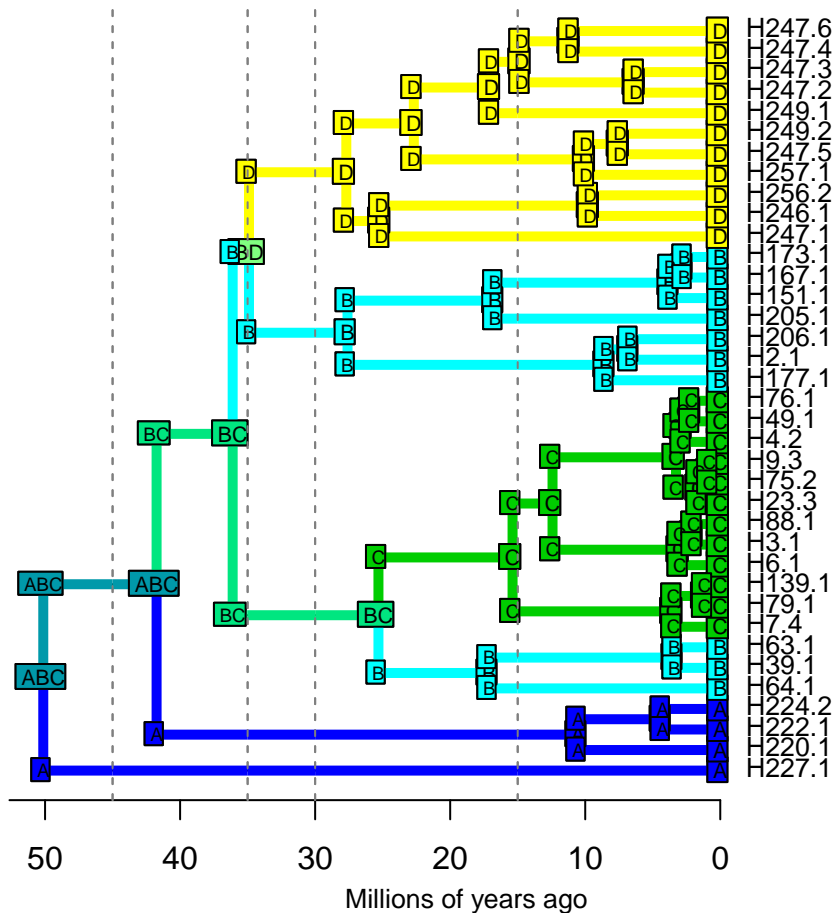
DEC – Stochastic Map #48/100

ancstates: global optim, 3 areas max. d=0.0119; e=0; x=-0.5308; j=0; LnL=-16.34



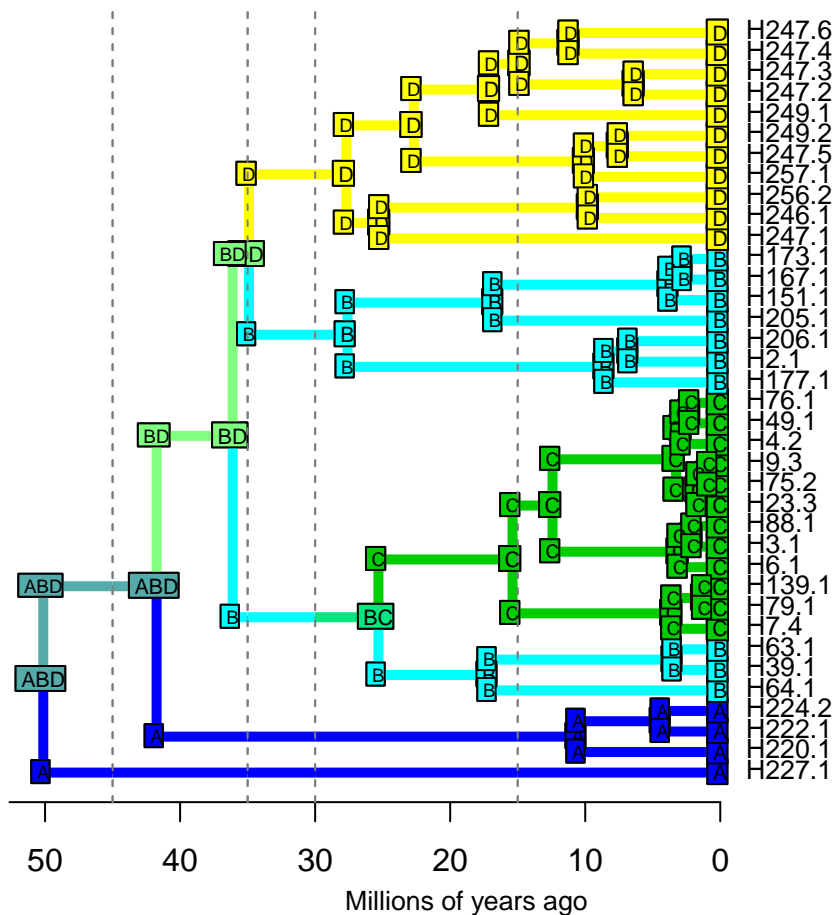
DEC – Stochastic Map #49/100

ancstates: global optim, 3 areas max. d=0.0119; e=0; x=-0.5308; j=0; LnL=-16.34



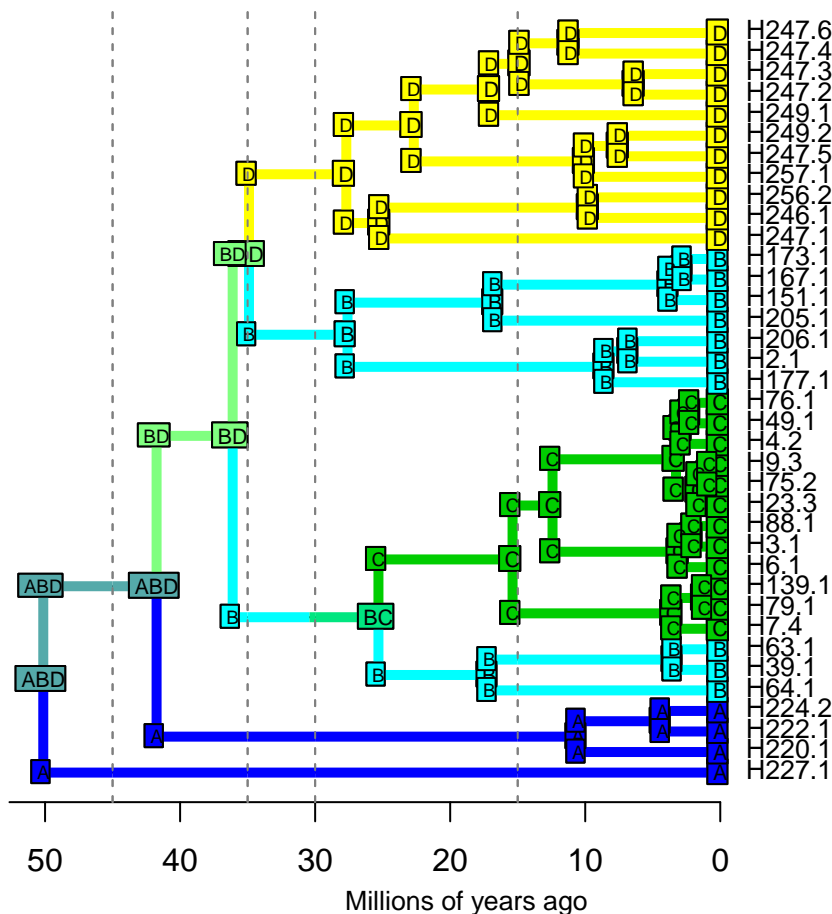
DEC – Stochastic Map #50/100

ancstates: global optim, 3 areas max. d=0.0119; e=0; x=-0.5308; j=0; LnL=-16.34



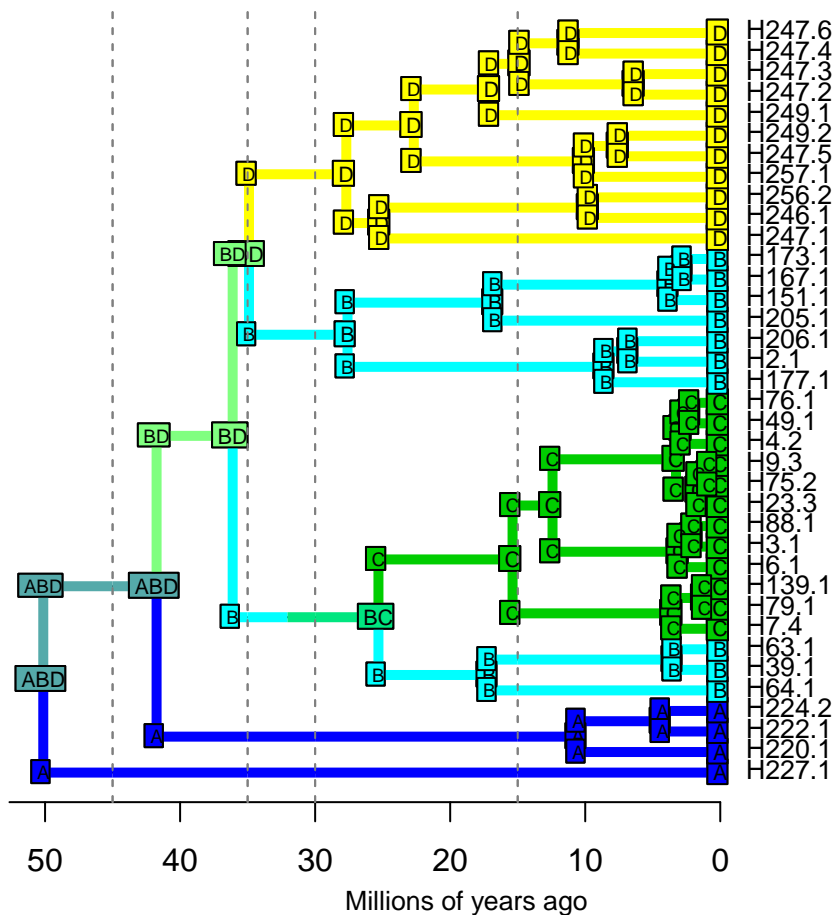
DEC – Stochastic Map #51/100

ancstates: global optim, 3 areas max. d=0.0119; e=0; x=-0.5308; j=0; LnL=-16.34



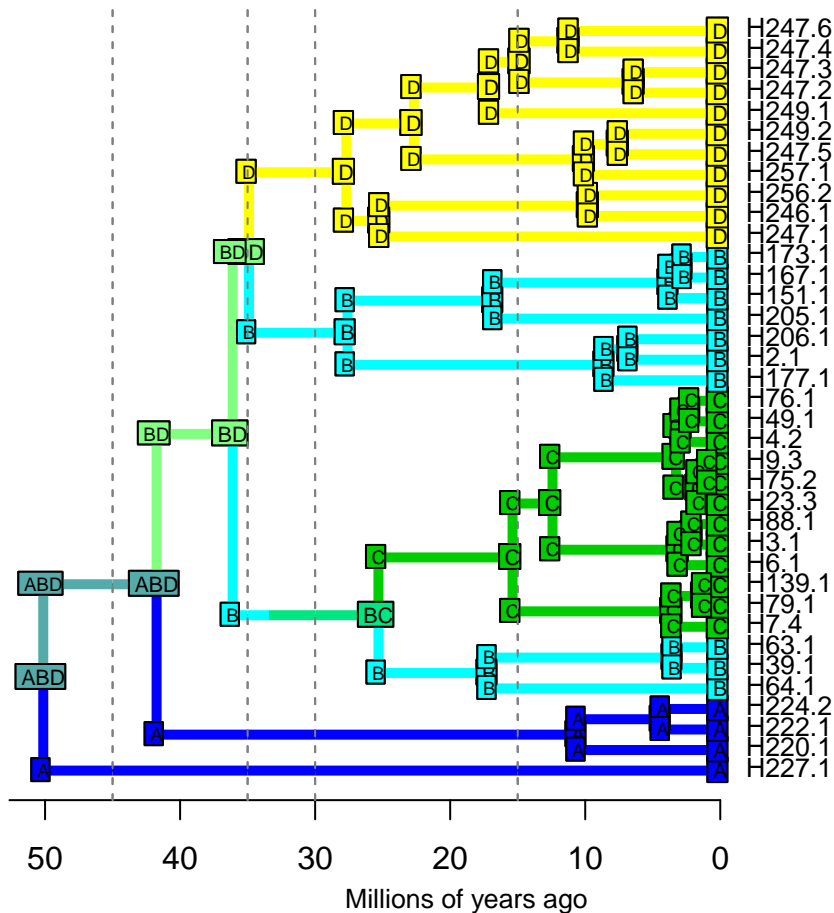
DEC – Stochastic Map #53/100

ancstates: global optim, 3 areas max. d=0.0119; e=0; x=-0.5308; j=0; LnL=-16.34



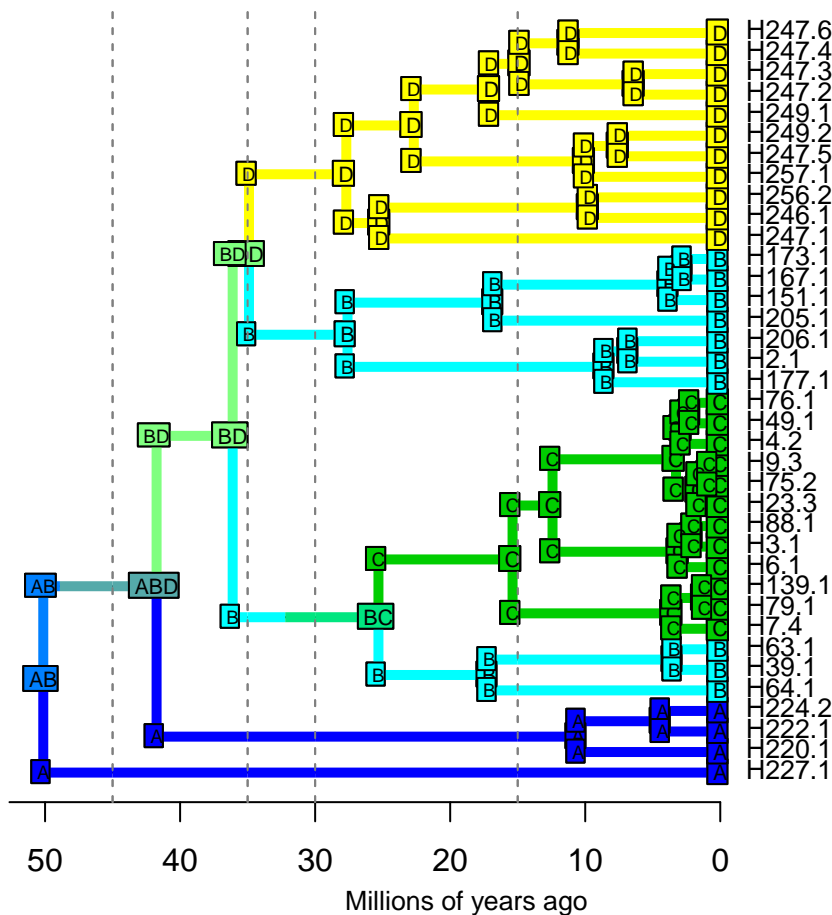
DEC – Stochastic Map #54/100

ancstates: global optim, 3 areas max. d=0.0119; e=0; x=-0.5308; j=0; LnL=-16.34



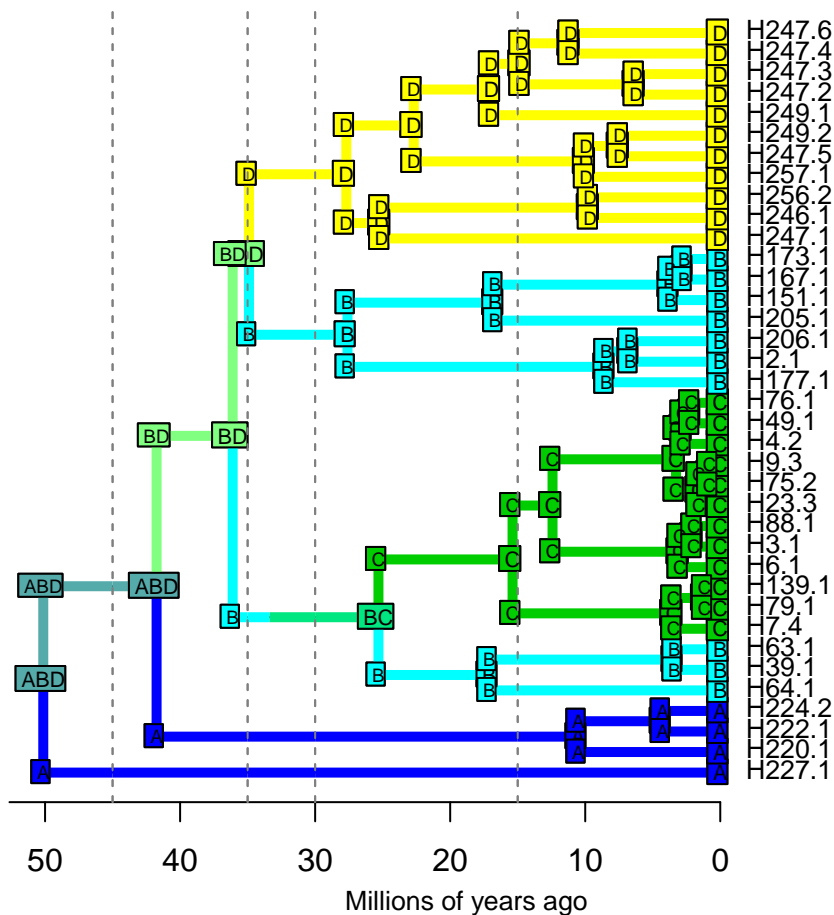
DEC – Stochastic Map #55/100

ancstates: global optim, 3 areas max. d=0.0119; e=0; x=-0.5308; j=0; LnL=-16.34



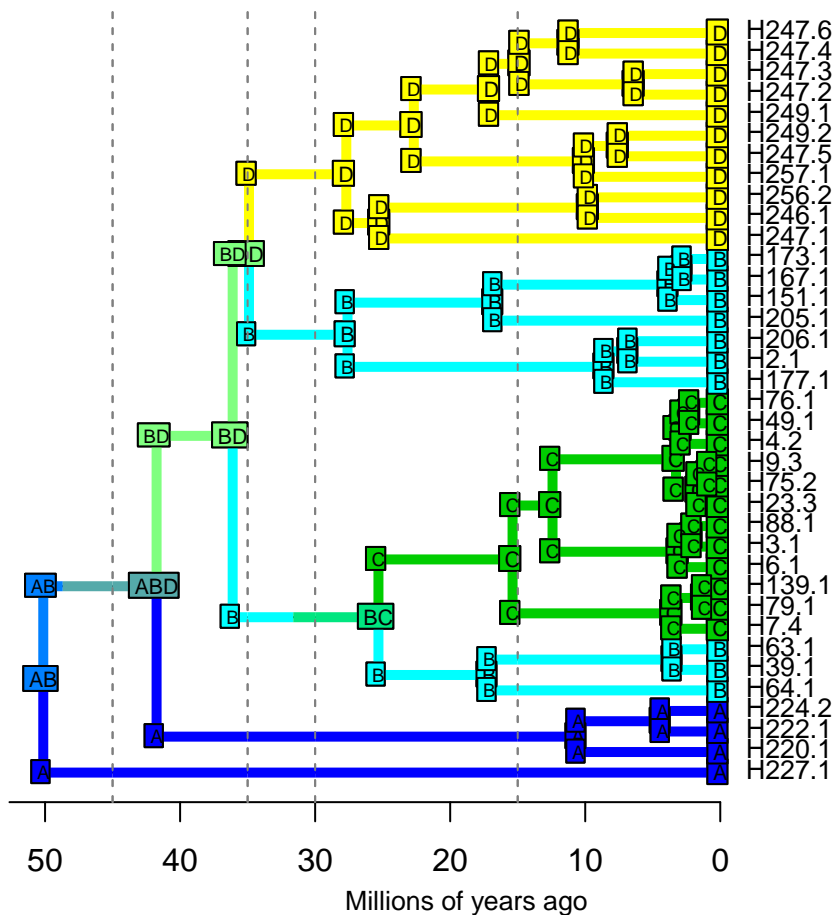
DEC – Stochastic Map #56/100

ancstates: global optim, 3 areas max. d=0.0119; e=0; x=-0.5308; j=0; LnL=-16.34



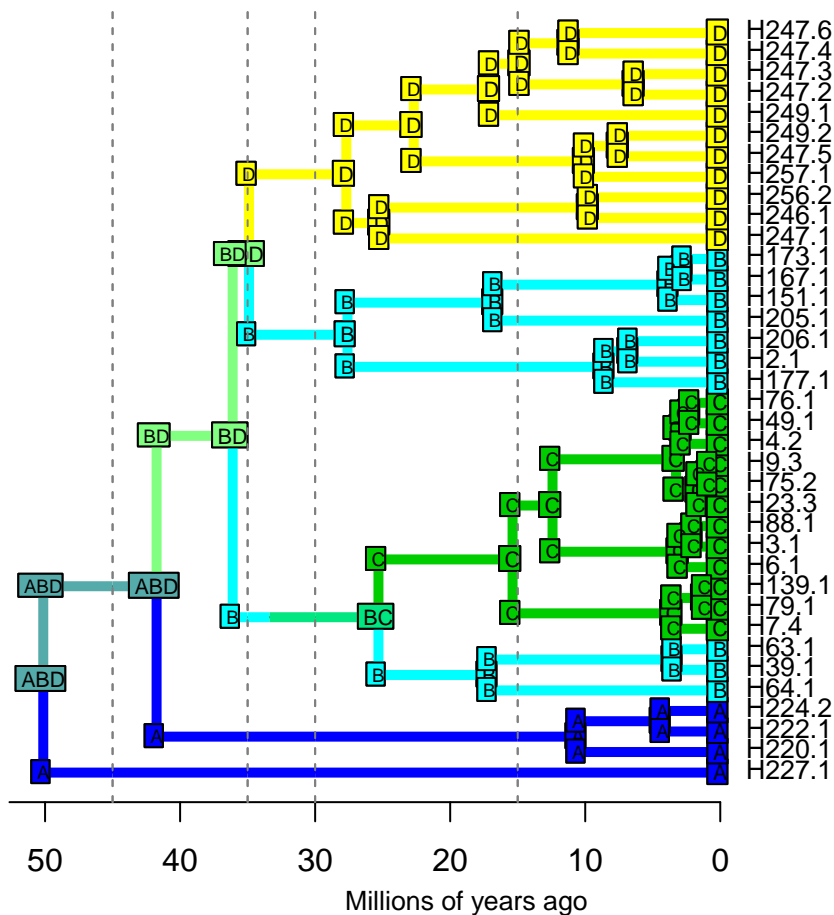
DEC – Stochastic Map #57/100

ancstates: global optim, 3 areas max. d=0.0119; e=0; x=-0.5308; j=0; LnL=-16.34



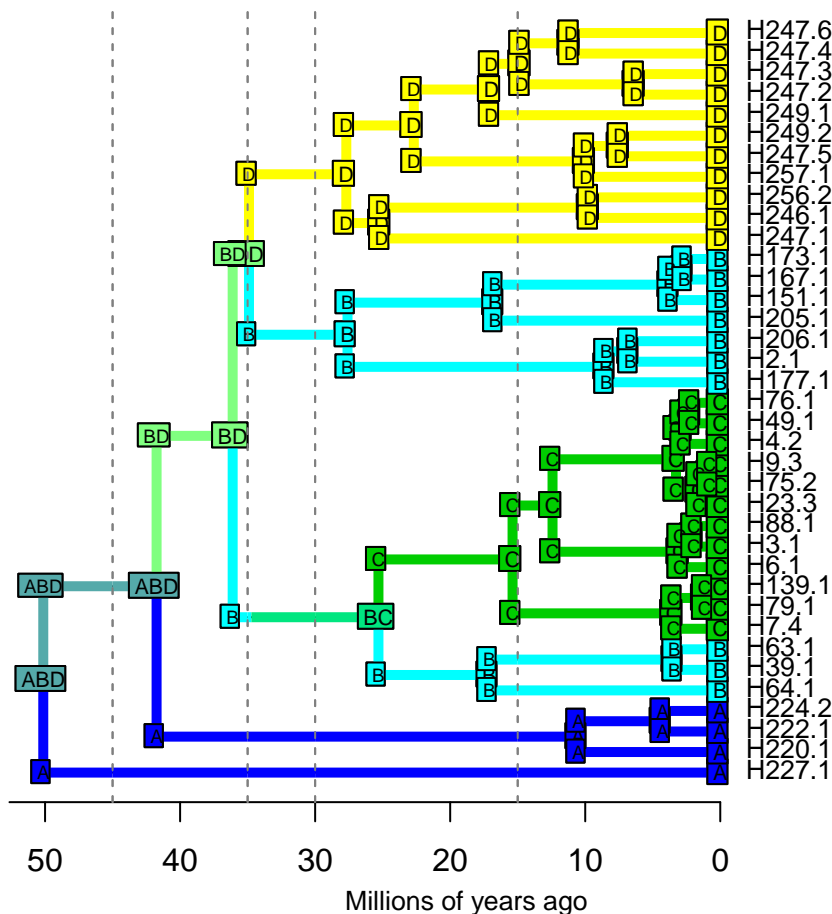
DEC – Stochastic Map #58/100

ancstates: global optim, 3 areas max. d=0.0119; e=0; x=-0.5308; j=0; LnL=-16.34



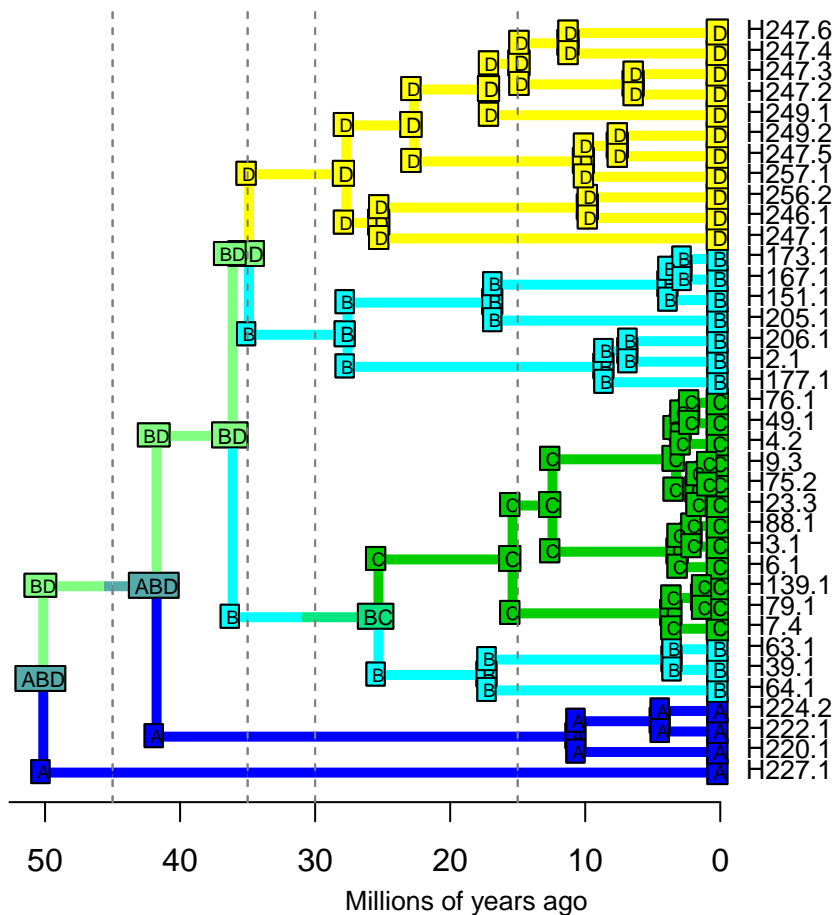
DEC – Stochastic Map #59/100

ancstates: global optim, 3 areas max. d=0.0119; e=0; x=-0.5308; j=0; LnL=-16.34



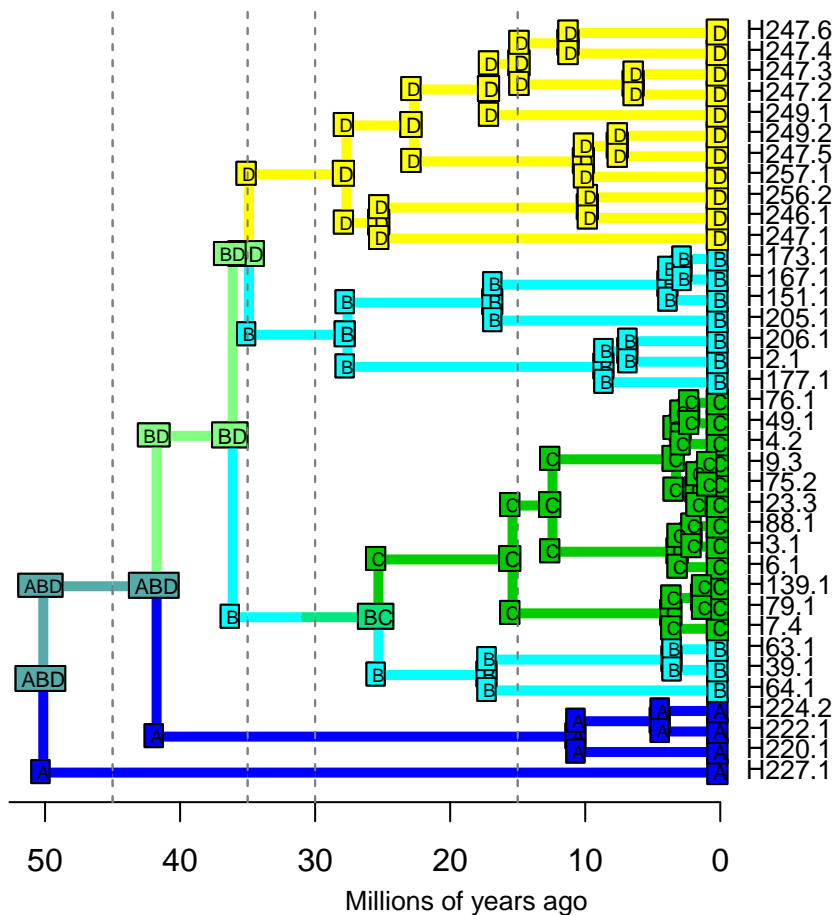
DEC – Stochastic Map #60/100

ancstates: global optim, 3 areas max. d=0.0119; e=0; x=-0.5308; j=0; LnL=-16.34



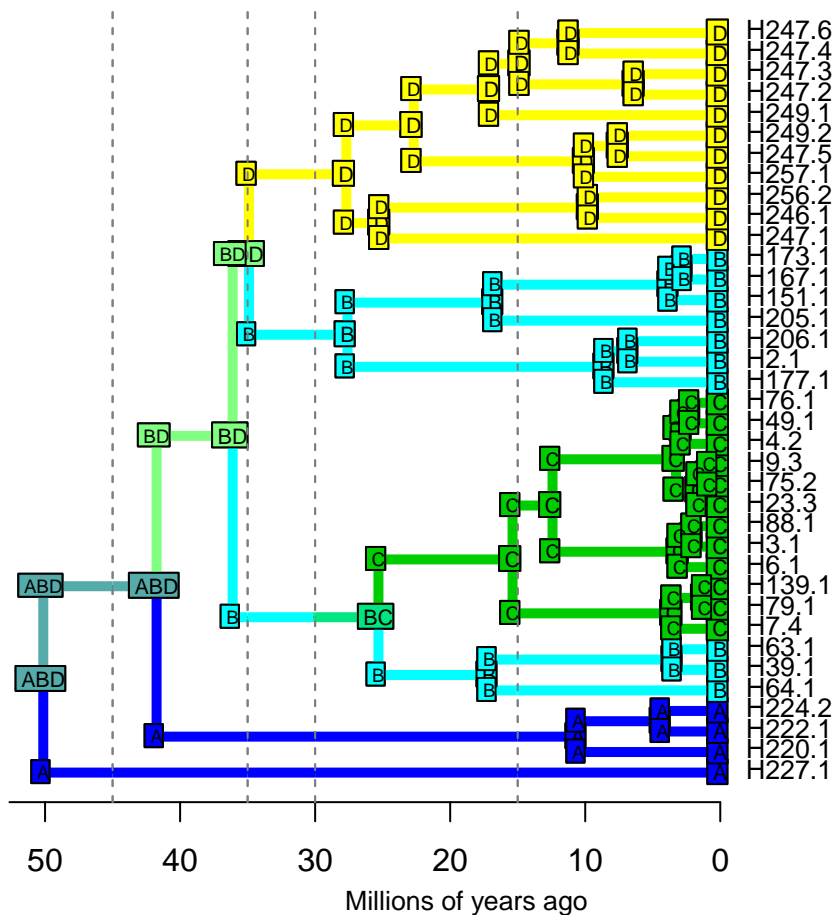
DEC – Stochastic Map #61/100

ancstates: global optim, 3 areas max. d=0.0119; e=0; x=-0.5308; j=0; LnL=-16.34



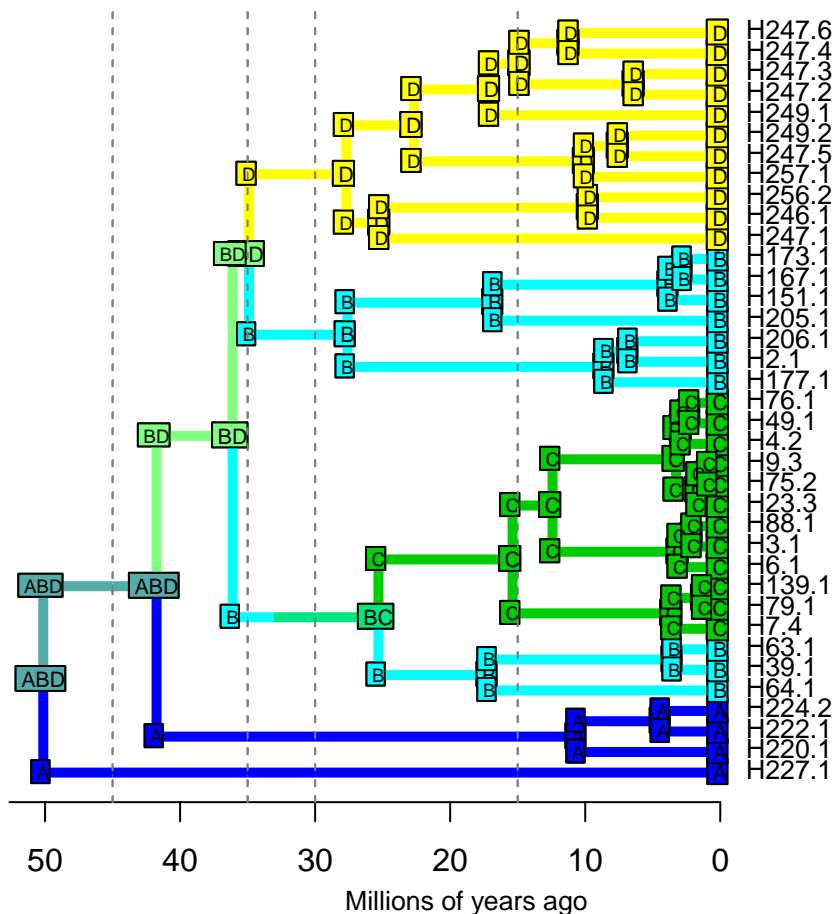
DEC – Stochastic Map #62/100

ancstates: global optim, 3 areas max. d=0.0119; e=0; x=-0.5308; j=0; LnL=-16.34

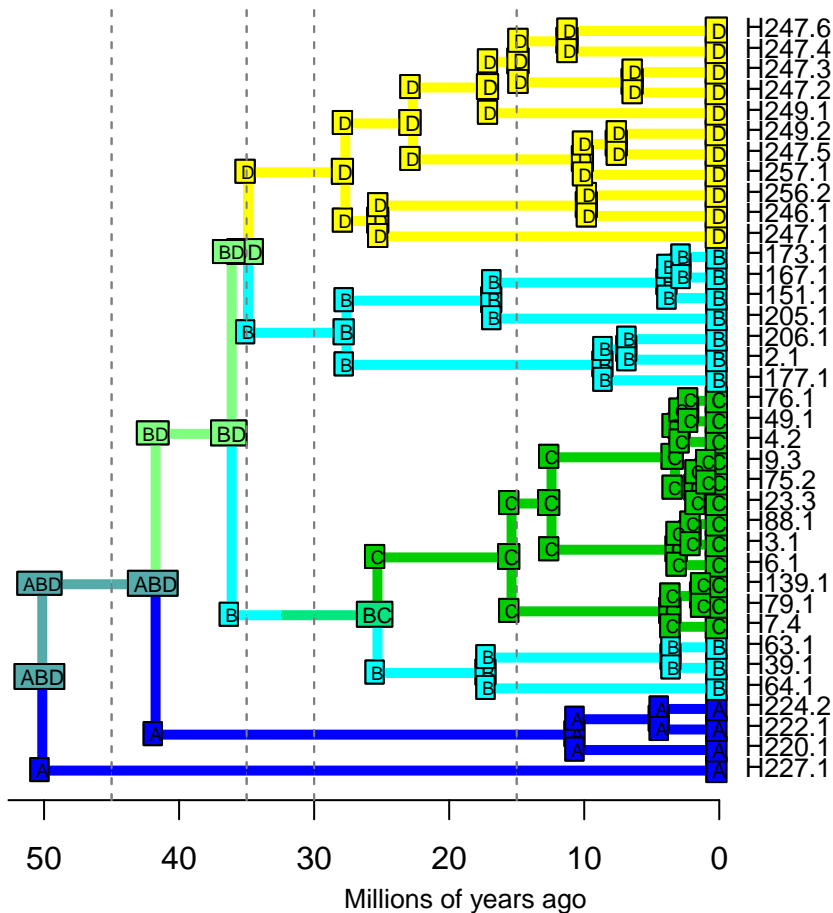


DEC – Stochastic Map #63/100

ancstates: global optim, 3 areas max. d=0.0119; e=0; x=-0.5308; j=0; LnL=-16.34

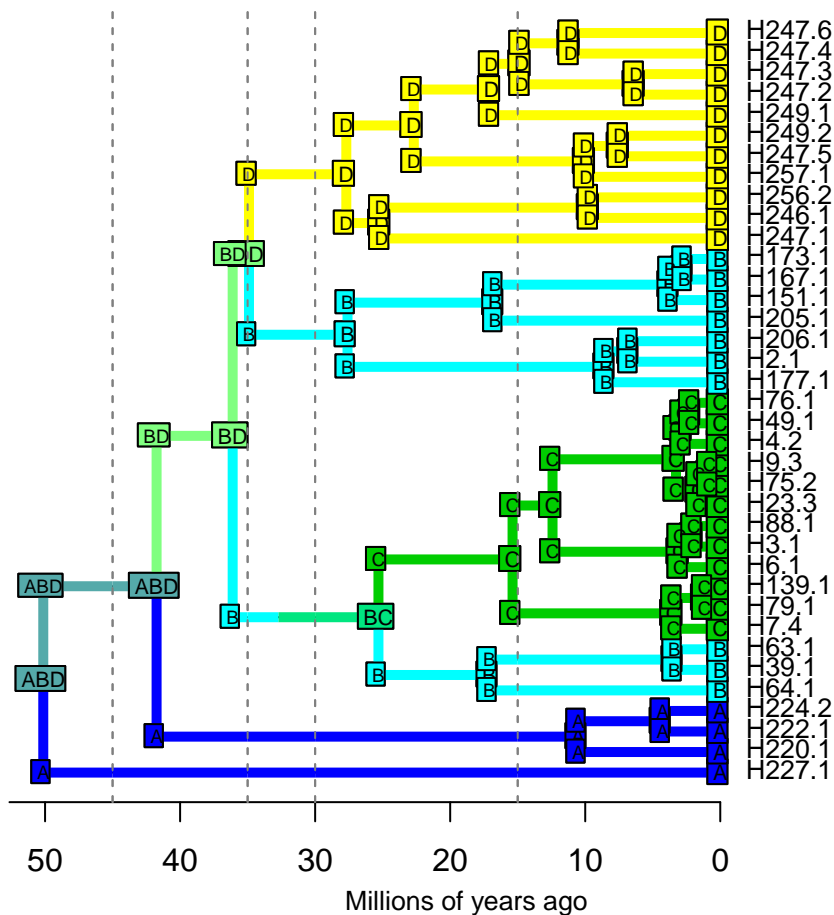


DEC – Stochastic Map #64/100



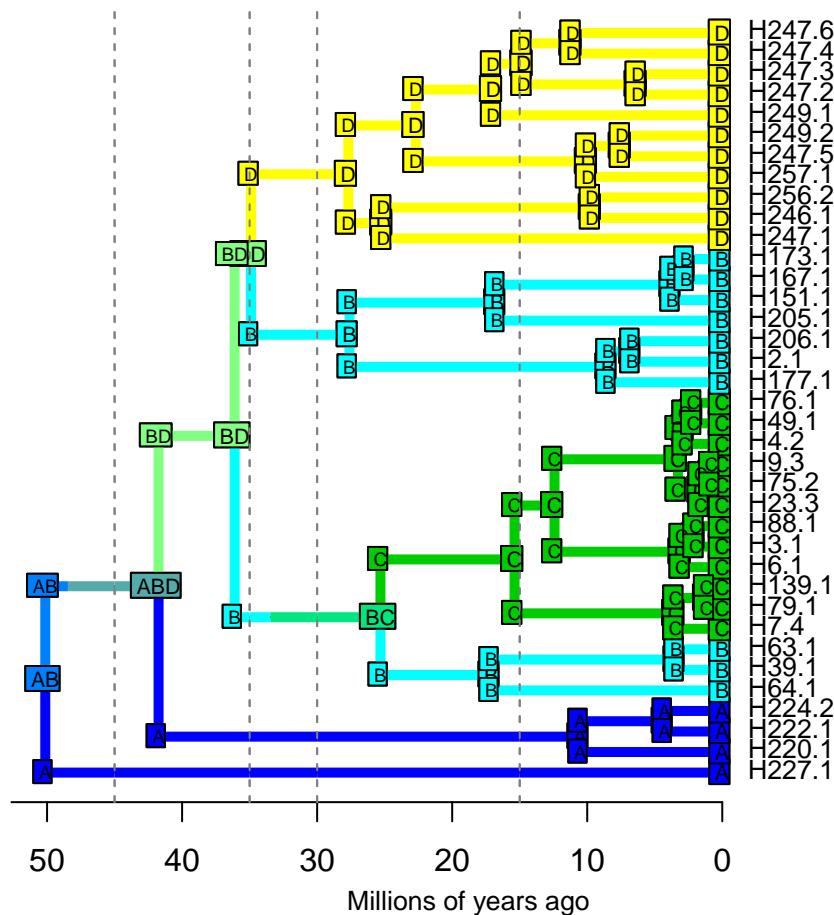
DEC – Stochastic Map #65/100

ancstates: global optim, 3 areas max. d=0.0119; e=0; x=-0.5308; j=0; LnL=-16.34



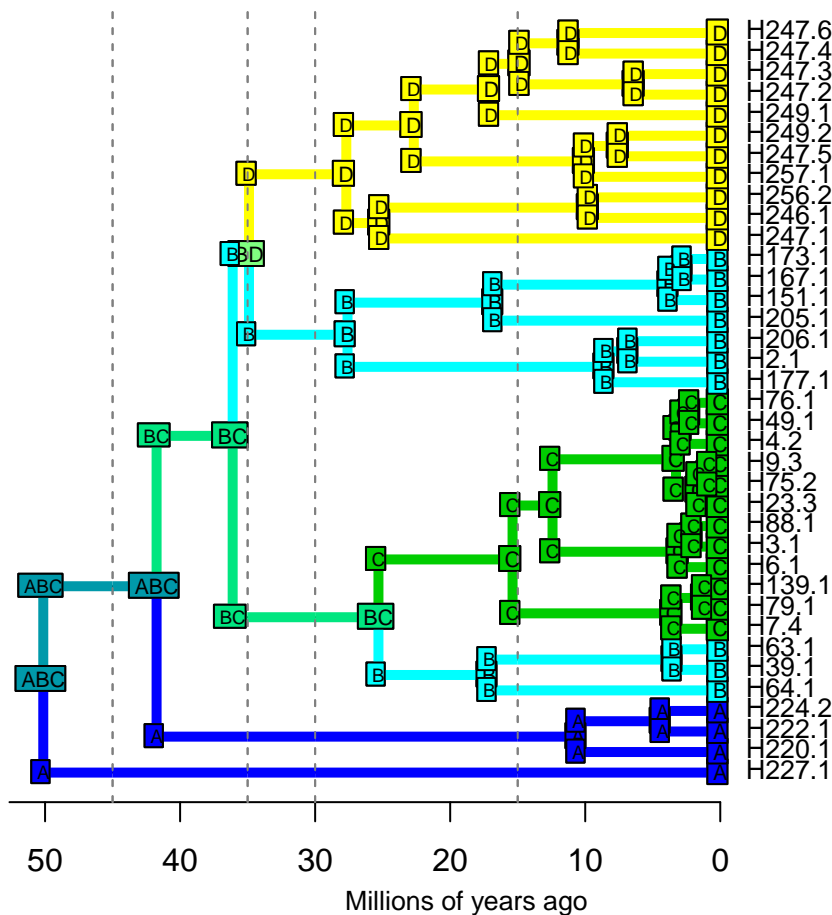
DEC – Stochastic Map #66/100

ancstates: global optim, 3 areas max. d=0.0119; e=0; x=-0.5308; j=0; LnL=-16.34

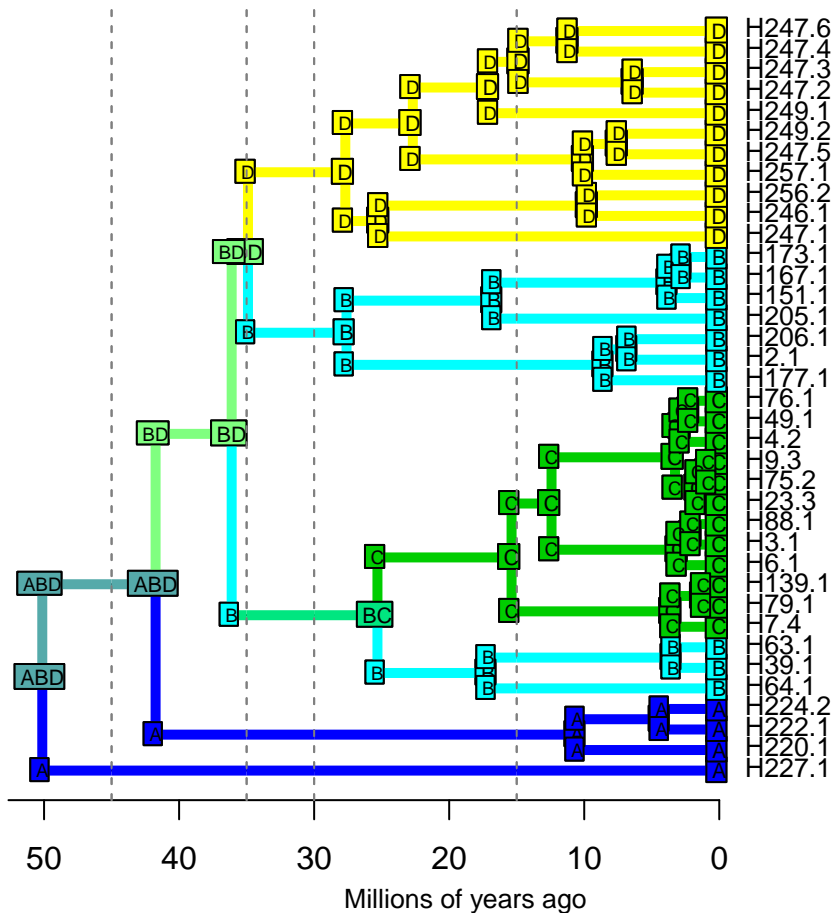


DEC – Stochastic Map #68/100

ancstates: global optim, 3 areas max. d=0.0119; e=0; x=-0.5308; j=0; LnL=-16.34

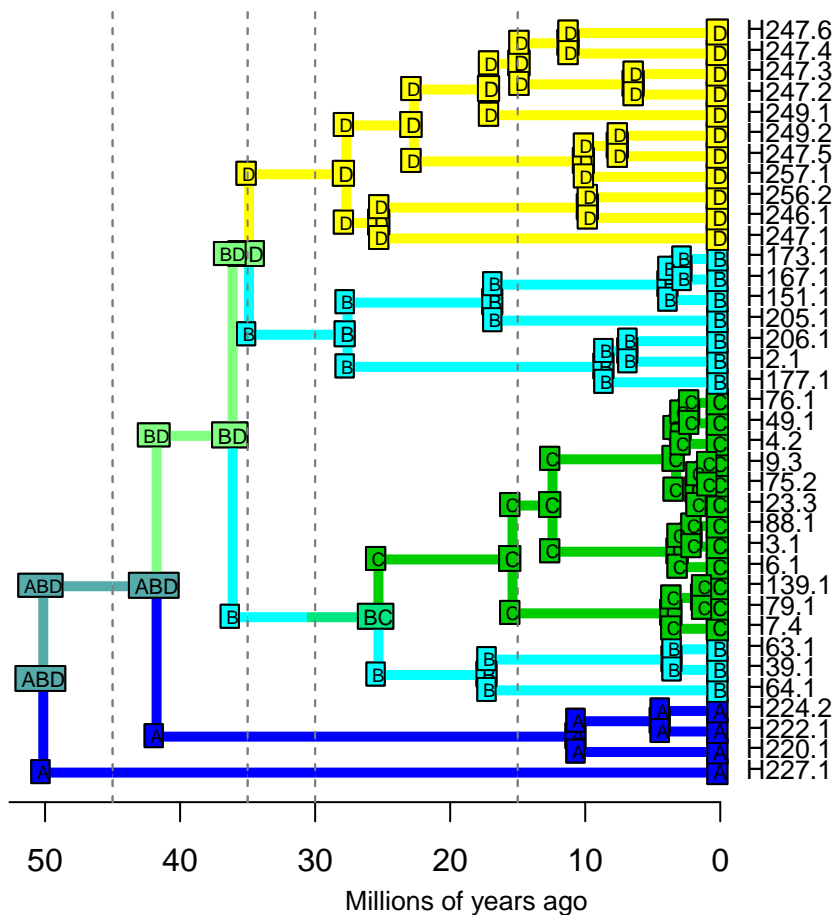


DEC – Stochastic Map #69/100
ancstates: global optim, 3 areas max. d=0.0119; e=0; x=-0.5308; j=0; LnL=-16.34



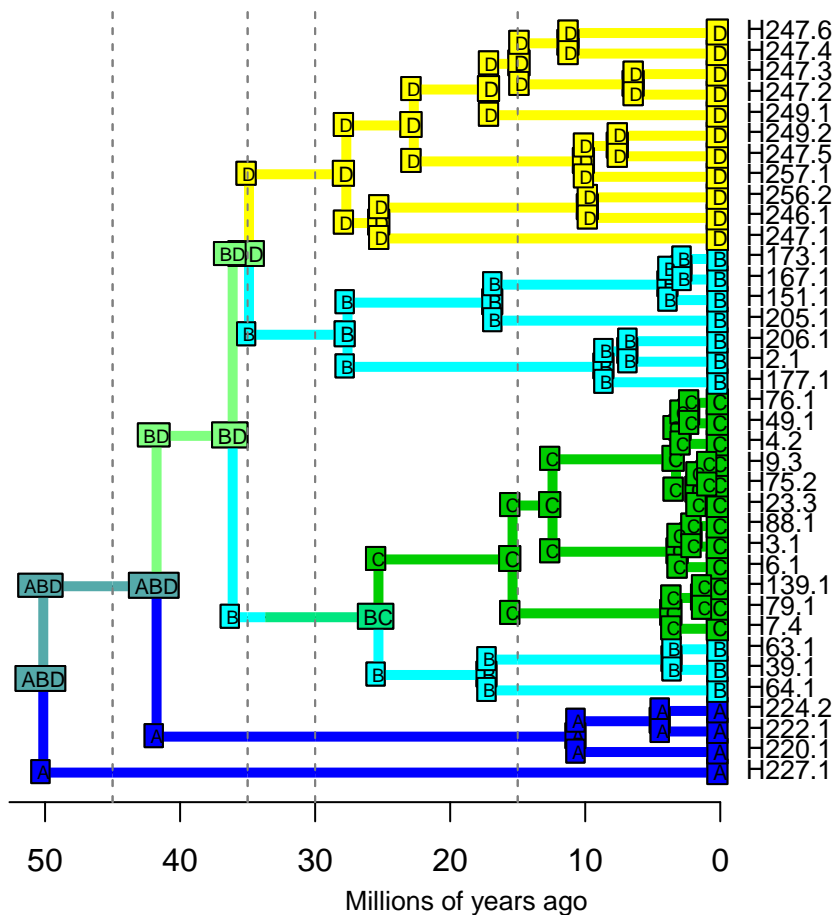
DEC – Stochastic Map #70/100

ancstates: global optim, 3 areas max. d=0.0119; e=0; x=-0.5308; j=0; LnL=-16.34



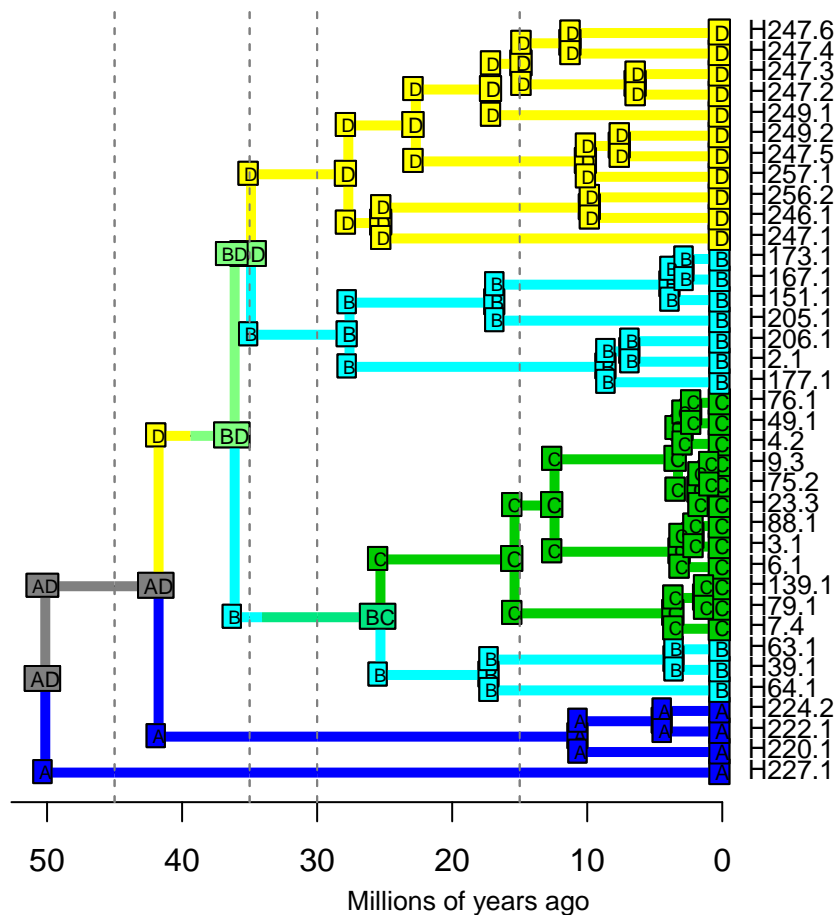
DEC – Stochastic Map #71/100

ancstates: global optim, 3 areas max. d=0.0119; e=0; x=-0.5308; j=0; LnL=-16.34



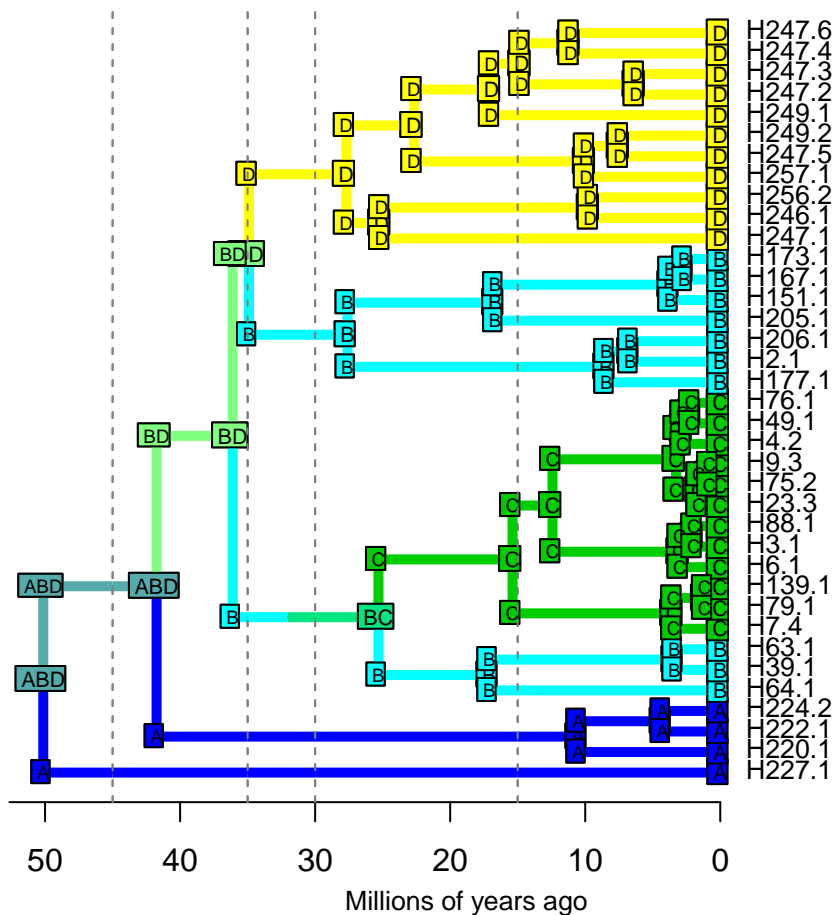
DEC – Stochastic Map #72/100

ancstates: global optim, 3 areas max. d=0.0119; e=0; x=-0.5308; j=0; LnL=-16.34



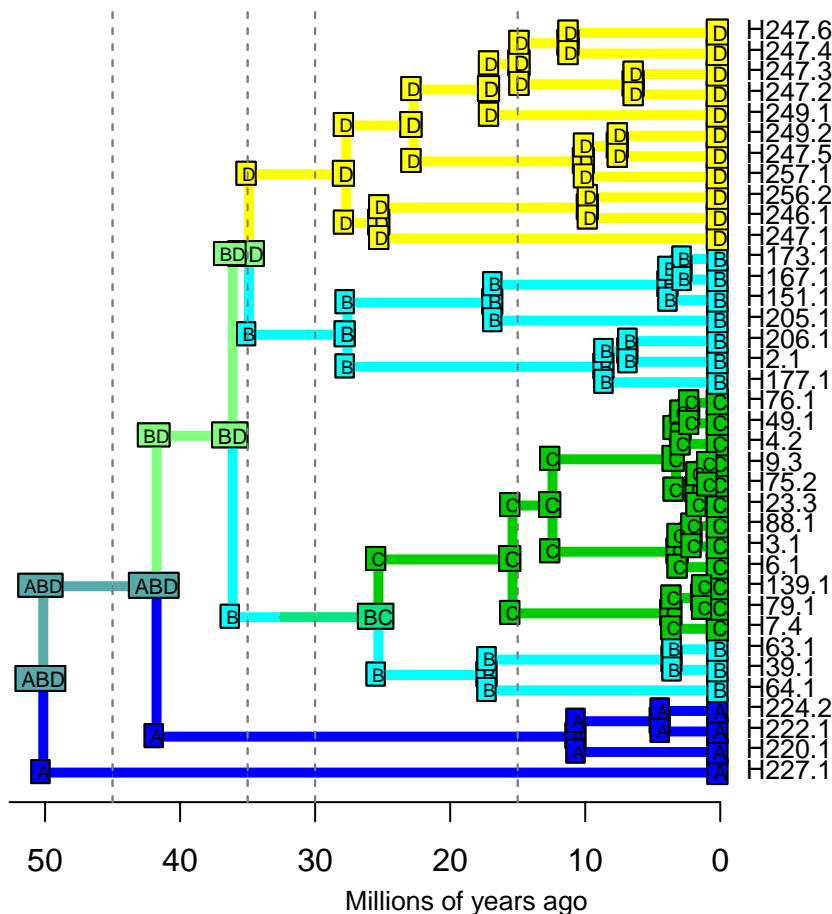
DEC – Stochastic Map #73/100

ancstates: global optim, 3 areas max. d=0.0119; e=0; x=-0.5308; j=0; LnL=-16.34



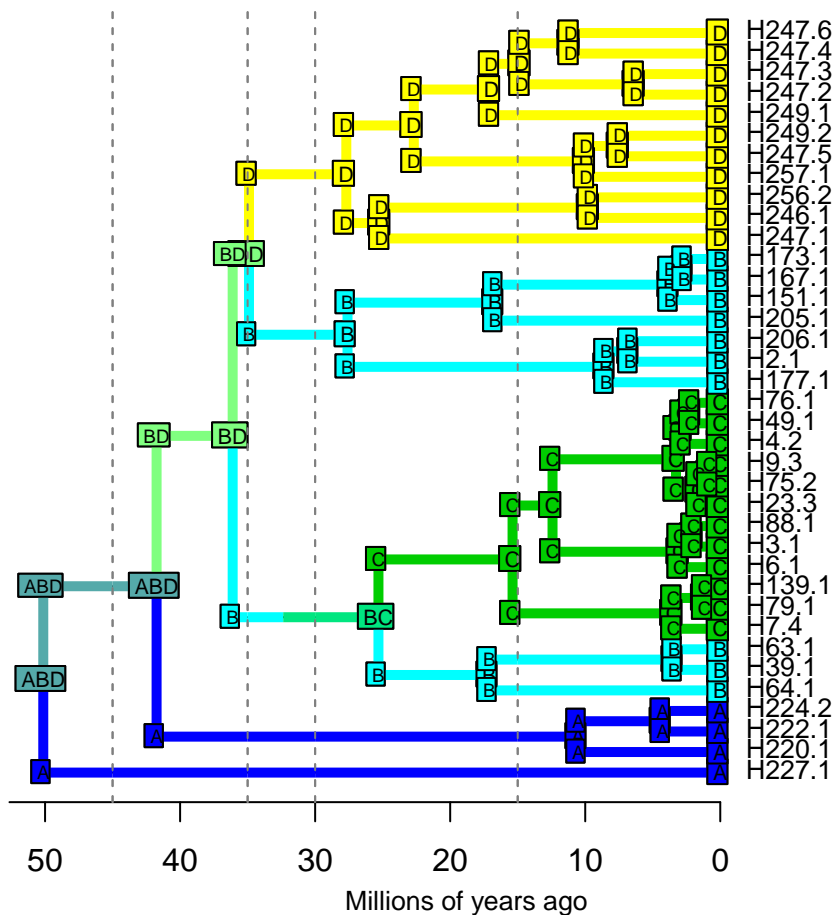
DEC – Stochastic Map #74/100

ancstates: global optim, 3 areas max. d=0.0119; e=0; x=-0.5308; j=0; LnL=-16.34



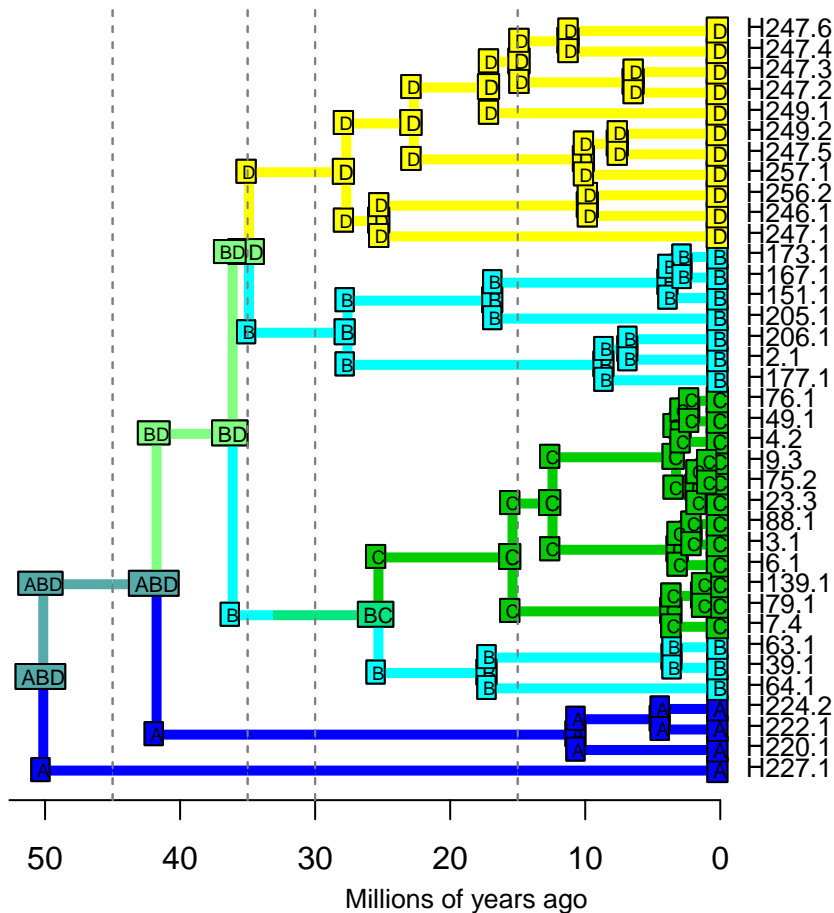
DEC – Stochastic Map #75/100

ancstates: global optim, 3 areas max. d=0.0119; e=0; x=-0.5308; j=0; LnL=-16.34



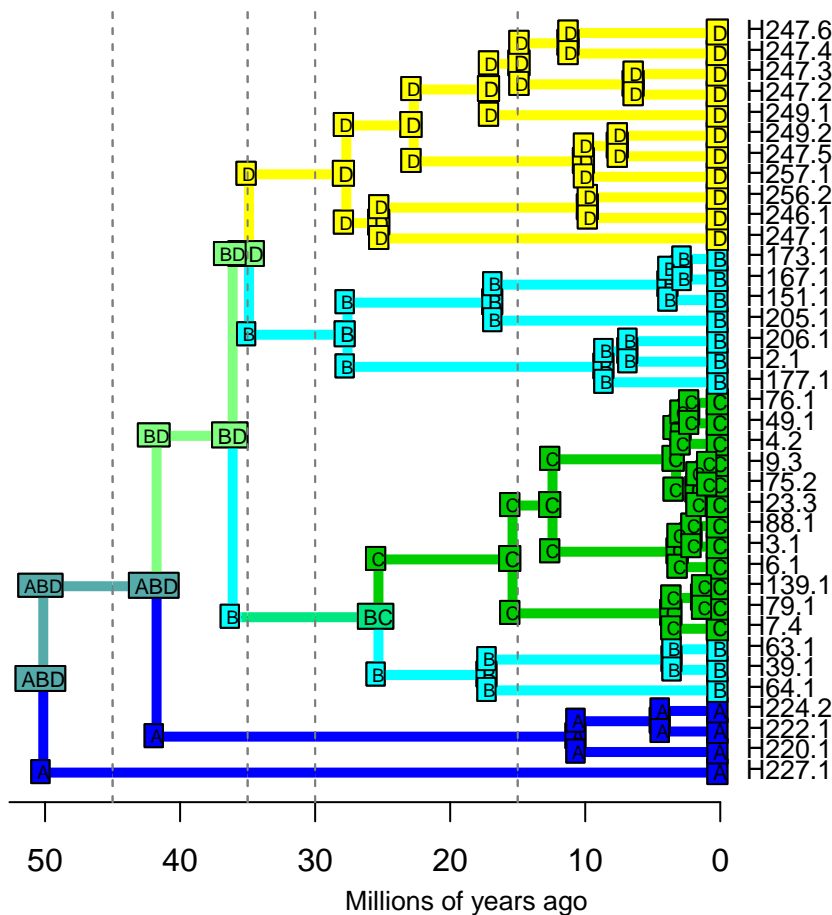
DEC – Stochastic Map #76/100

ancstates: global optim, 3 areas max. d=0.0119; e=0; x=-0.5308; j=0; LnL=-16.34



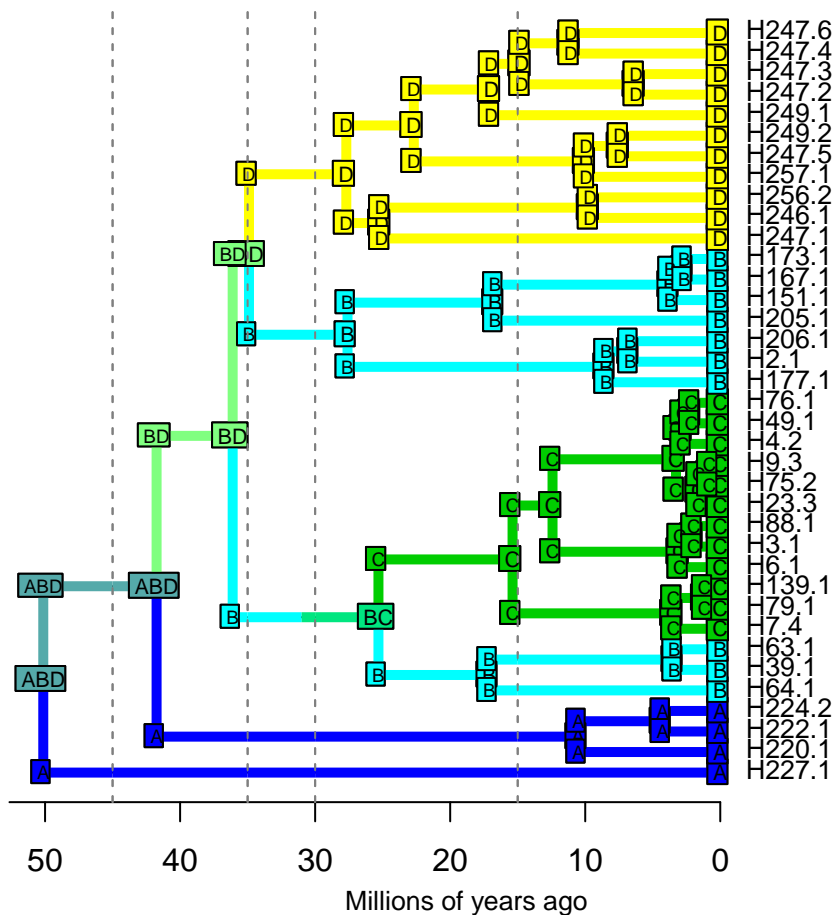
DEC – Stochastic Map #78/100

ancstates: global optim, 3 areas max. d=0.0119; e=0; x=-0.5308; j=0; LnL=-16.34



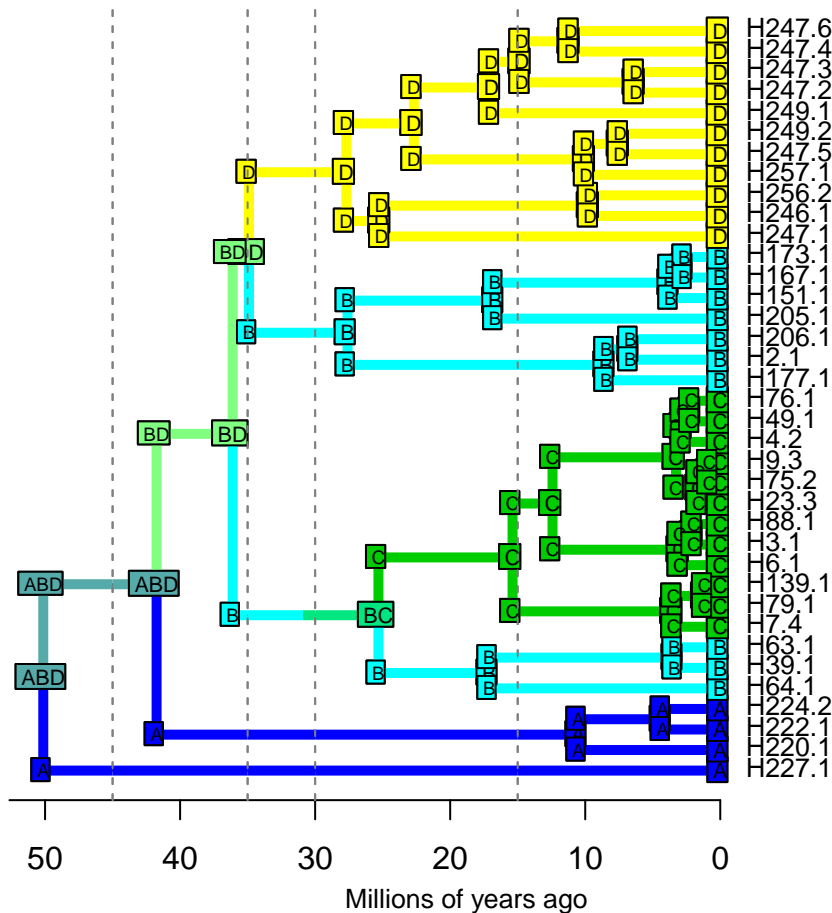
DEC – Stochastic Map #79/100

ancstates: global optim, 3 areas max. d=0.0119; e=0; x=-0.5308; j=0; LnL=-16.34



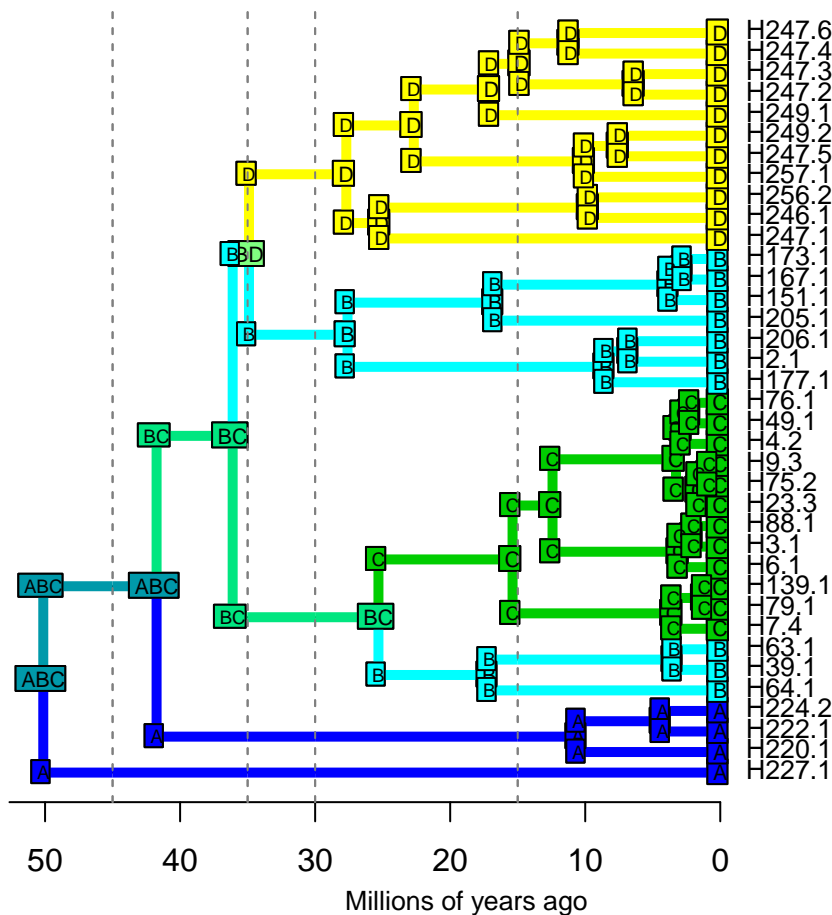
DEC – Stochastic Map #80/100

ancstates: global optim, 3 areas max. d=0.0119; e=0; x=-0.5308; j=0; LnL=-16.34



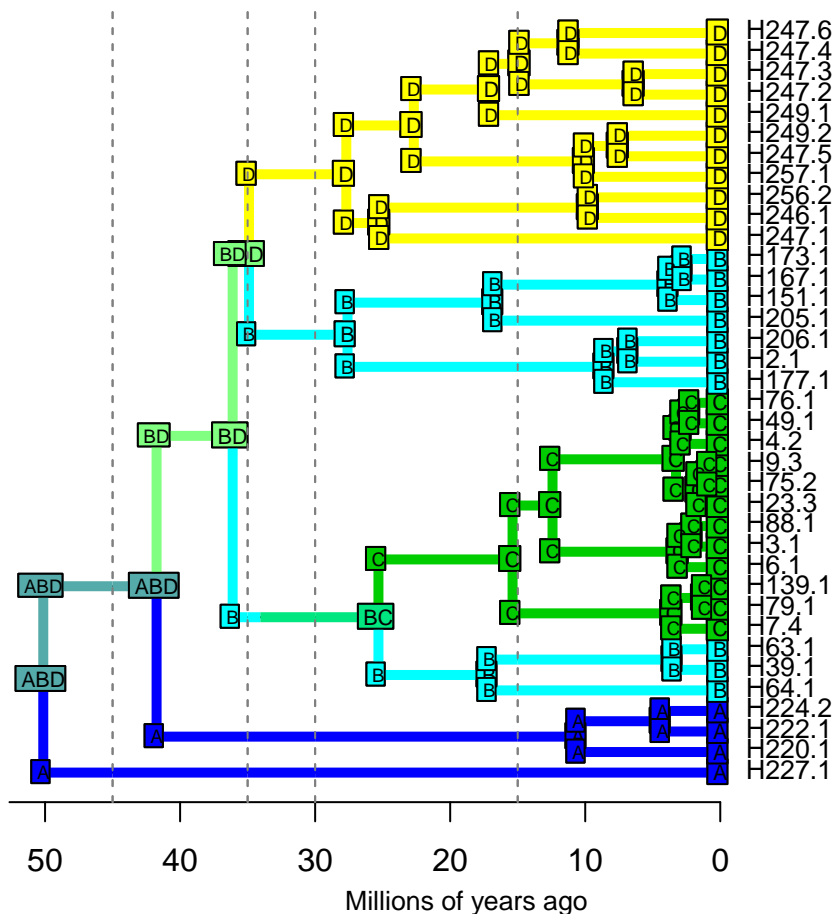
DEC – Stochastic Map #81/100

ancstates: global optim, 3 areas max. d=0.0119; e=0; x=-0.5308; j=0; LnL=-16.34



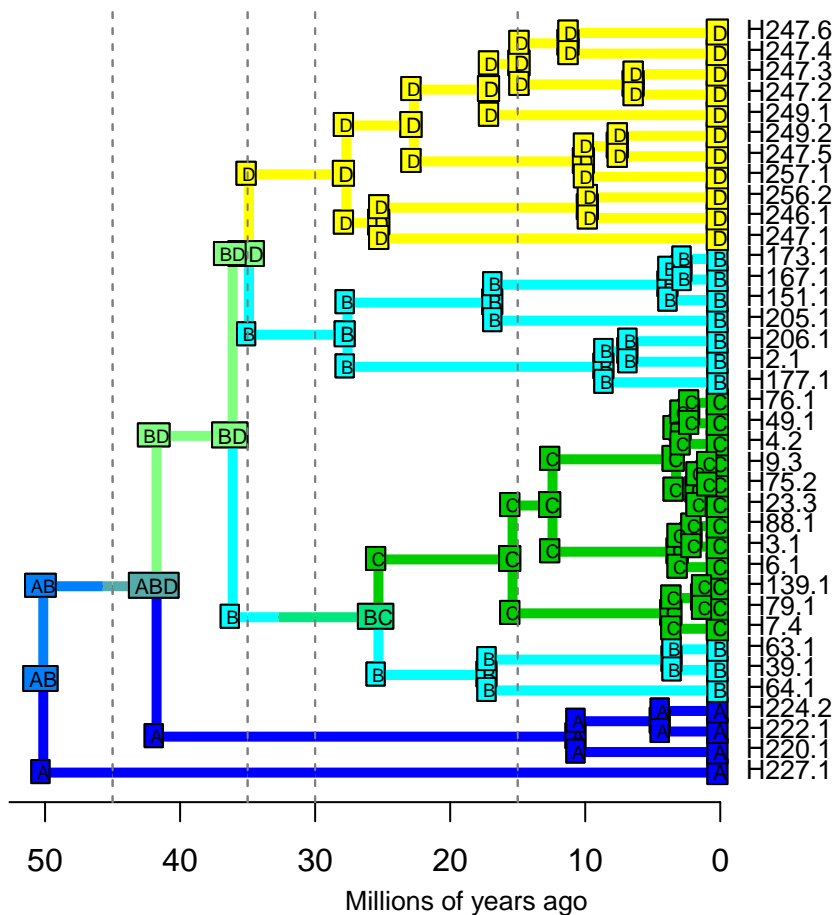
DEC – Stochastic Map #82/100

ancstates: global optim, 3 areas max. d=0.0119; e=0; x=-0.5308; j=0; LnL=-16.34



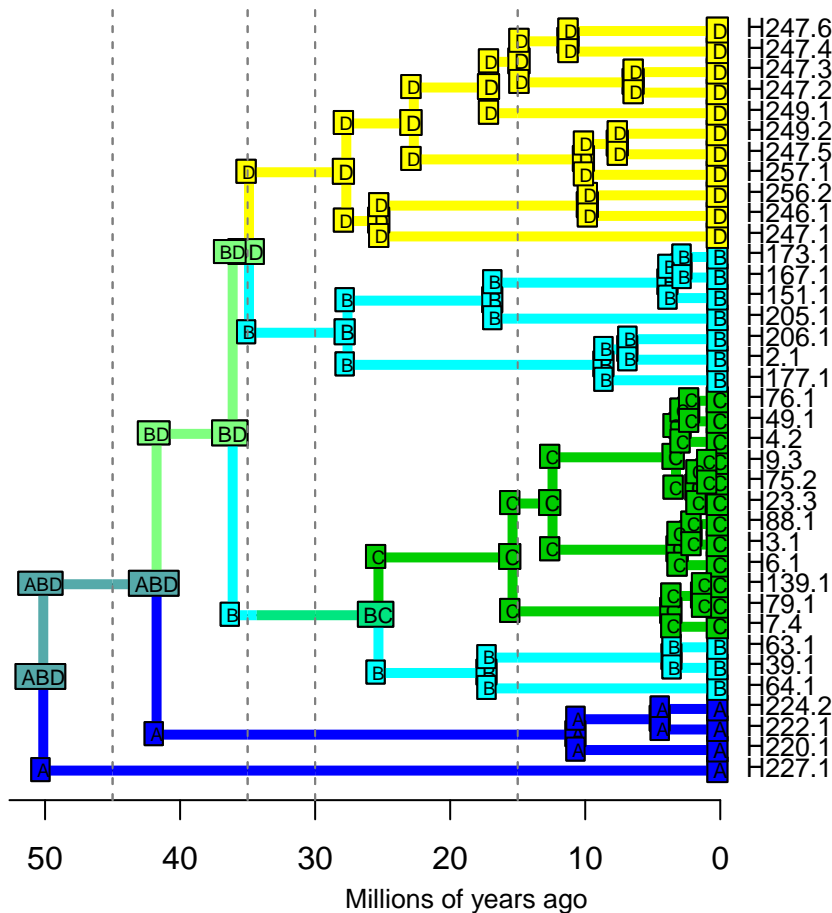
DEC – Stochastic Map #83/100

ancstates: global optim, 3 areas max. d=0.0119; e=0; x=-0.5308; j=0; LnL=-16.34



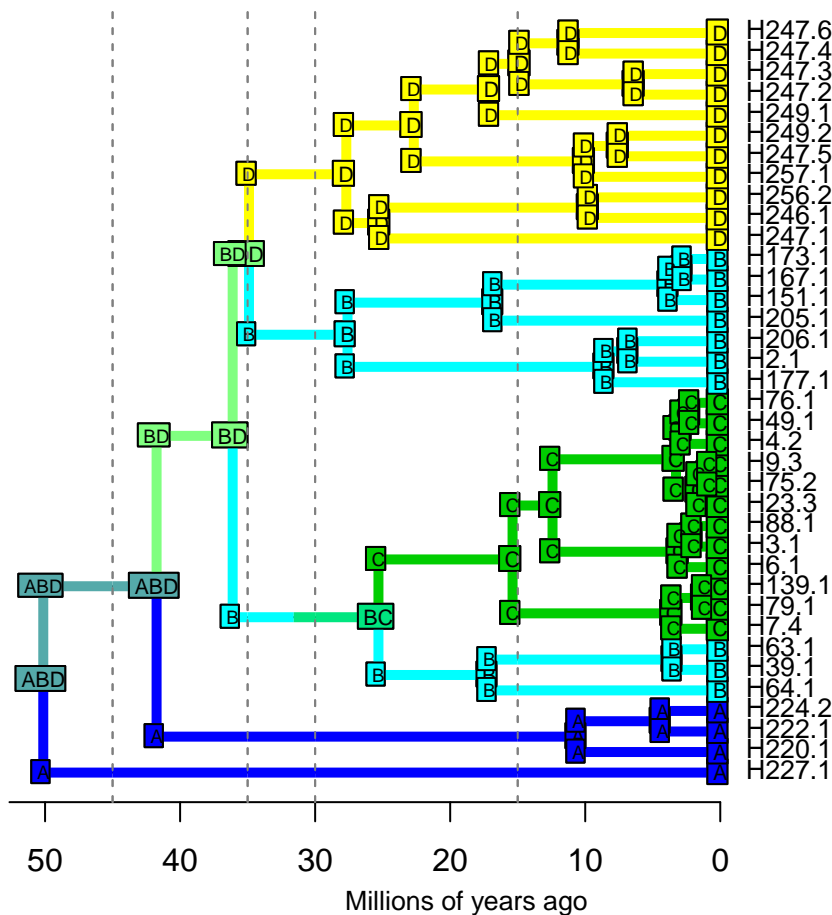
DEC – Stochastic Map #84/100

ancstates: global optim, 3 areas max. d=0.0119; e=0; x=-0.5308; j=0; LnL=-16.34



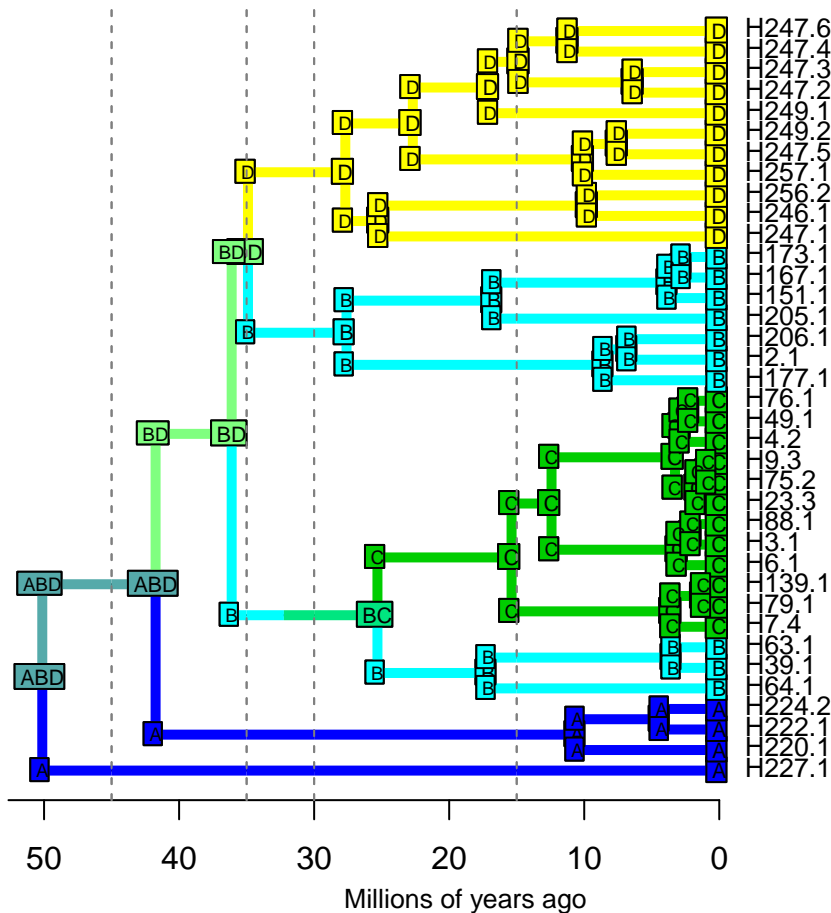
DEC – Stochastic Map #85/100

ancstates: global optim, 3 areas max. d=0.0119; e=0; x=-0.5308; j=0; LnL=-16.34



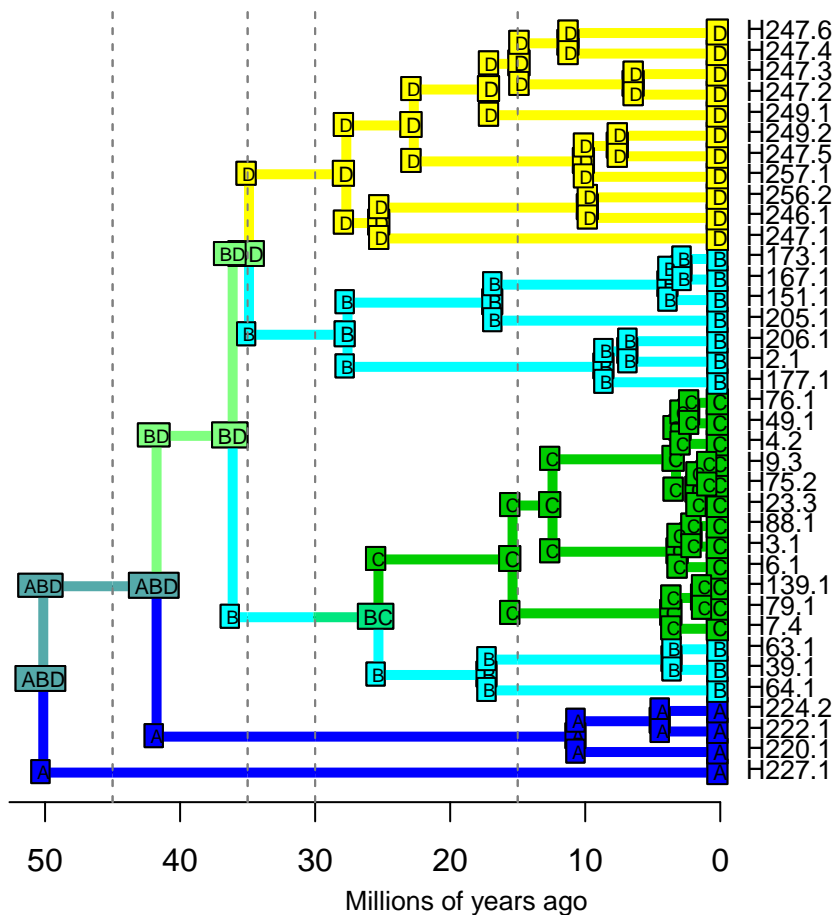
DEC – Stochastic Map #86/100

ancstates: global optim, 3 areas max. d=0.0119; e=0; x=-0.5308; j=0; LnL=-16.34



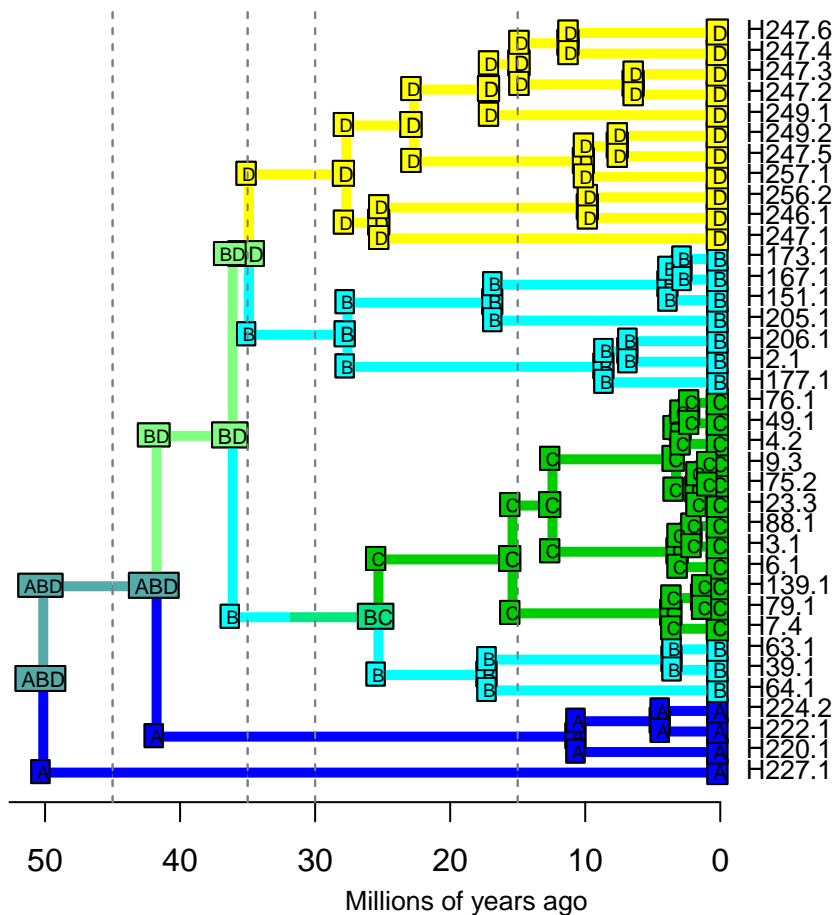
DEC – Stochastic Map #87/100

ancstates: global optim, 3 areas max. d=0.0119; e=0; x=-0.5308; j=0; LnL=-16.34



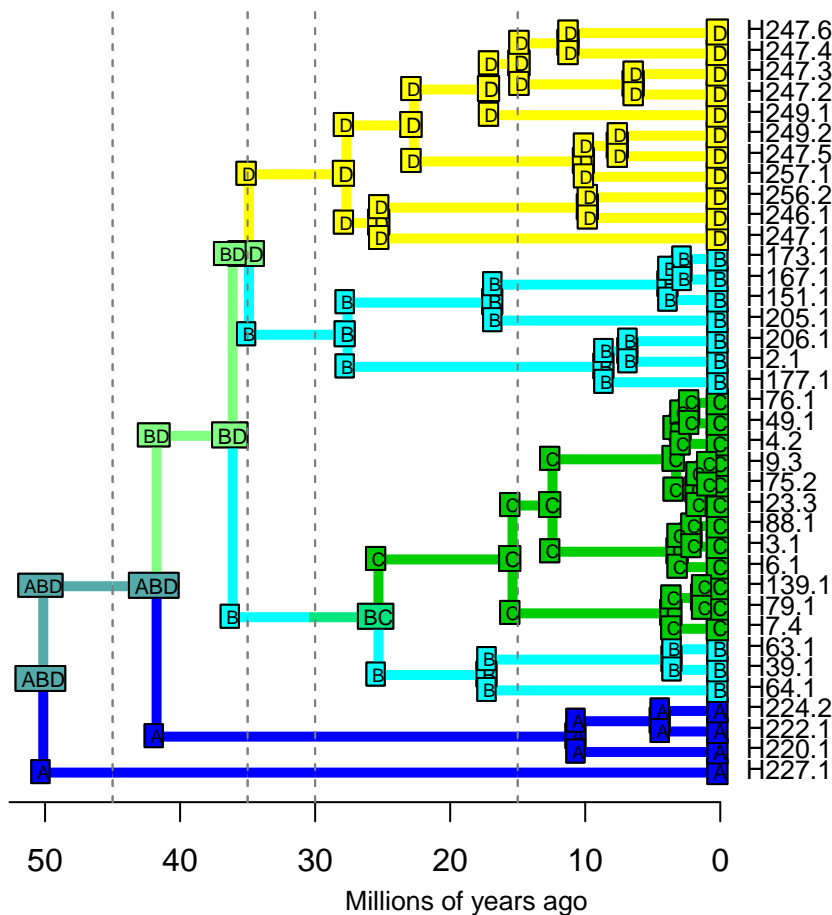
DEC – Stochastic Map #88/100

ancstates: global optim, 3 areas max. d=0.0119; e=0; x=-0.5308; j=0; LnL=-16.34



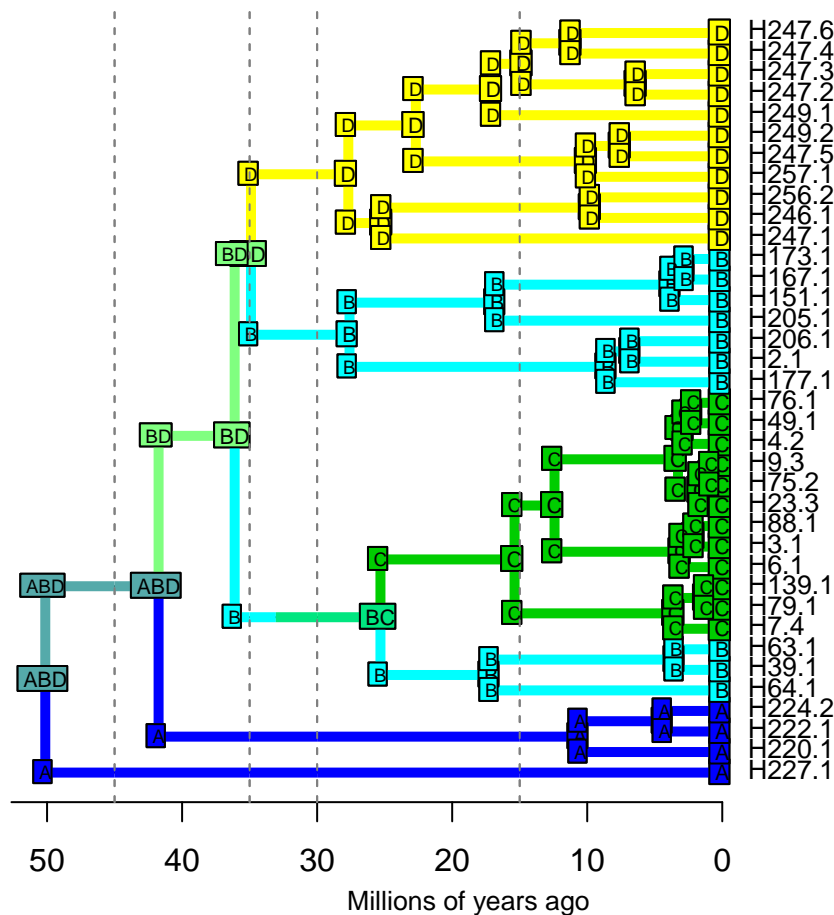
DEC – Stochastic Map #89/100

ancstates: global optim, 3 areas max. d=0.0119; e=0; x=-0.5308; j=0; LnL=-16.34



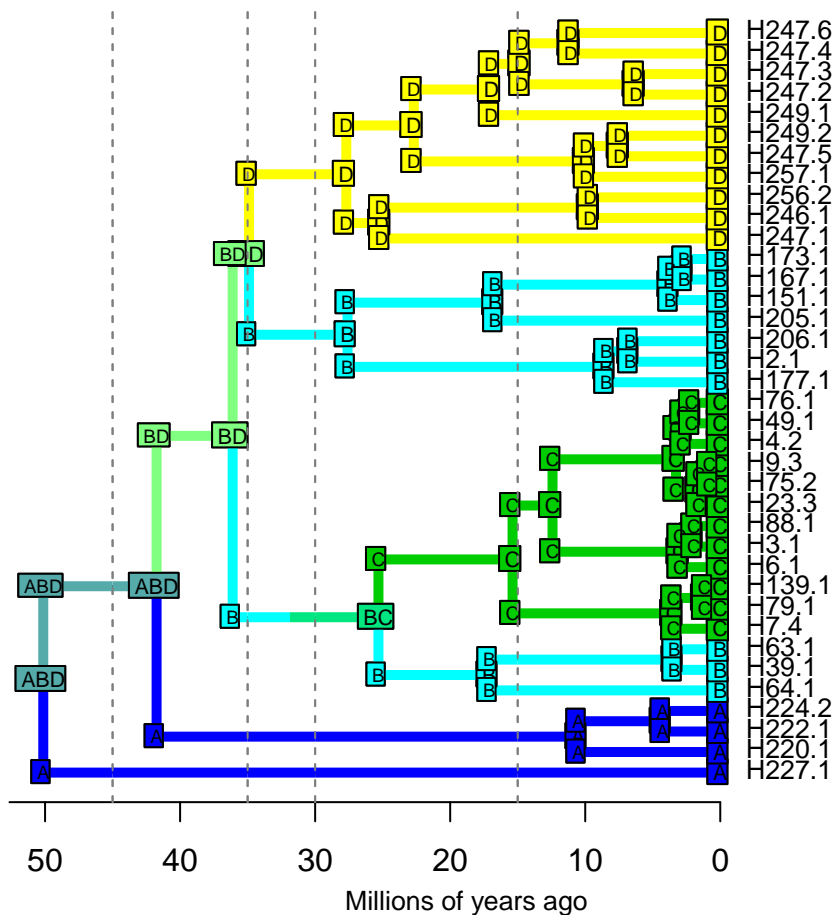
DEC – Stochastic Map #90/100

ancstates: global optim, 3 areas max. d=0.0119; e=0; x=-0.5308; j=0; LnL=-16.34



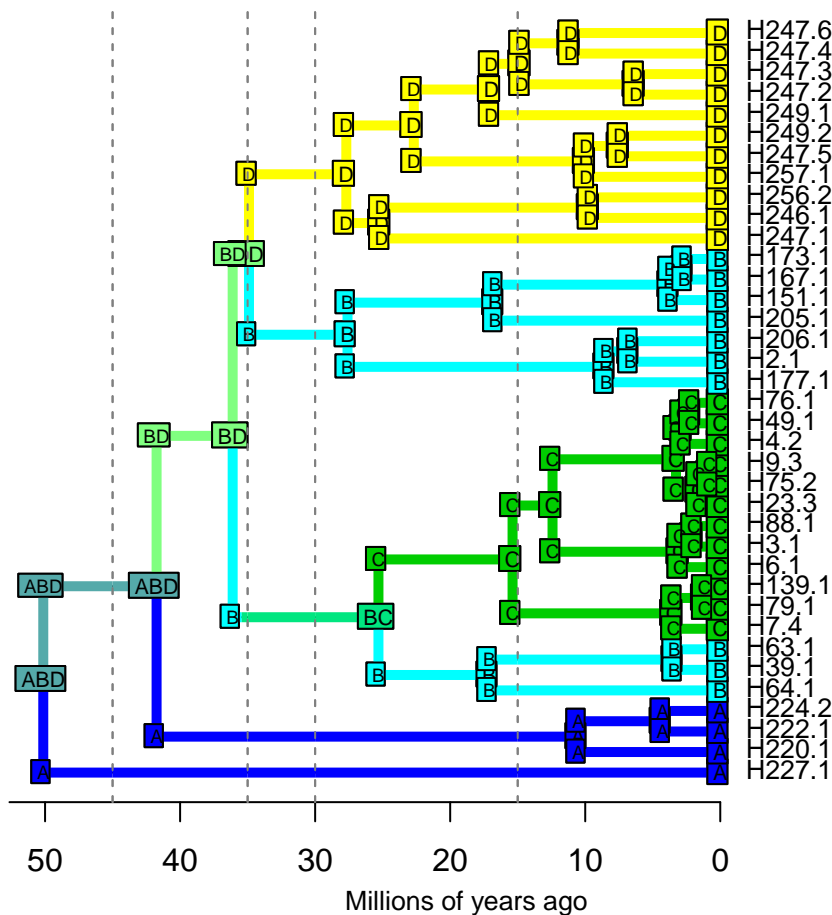
DEC – Stochastic Map #91/100

ancstates: global optim, 3 areas max. d=0.0119; e=0; x=-0.5308; j=0; LnL=-16.34



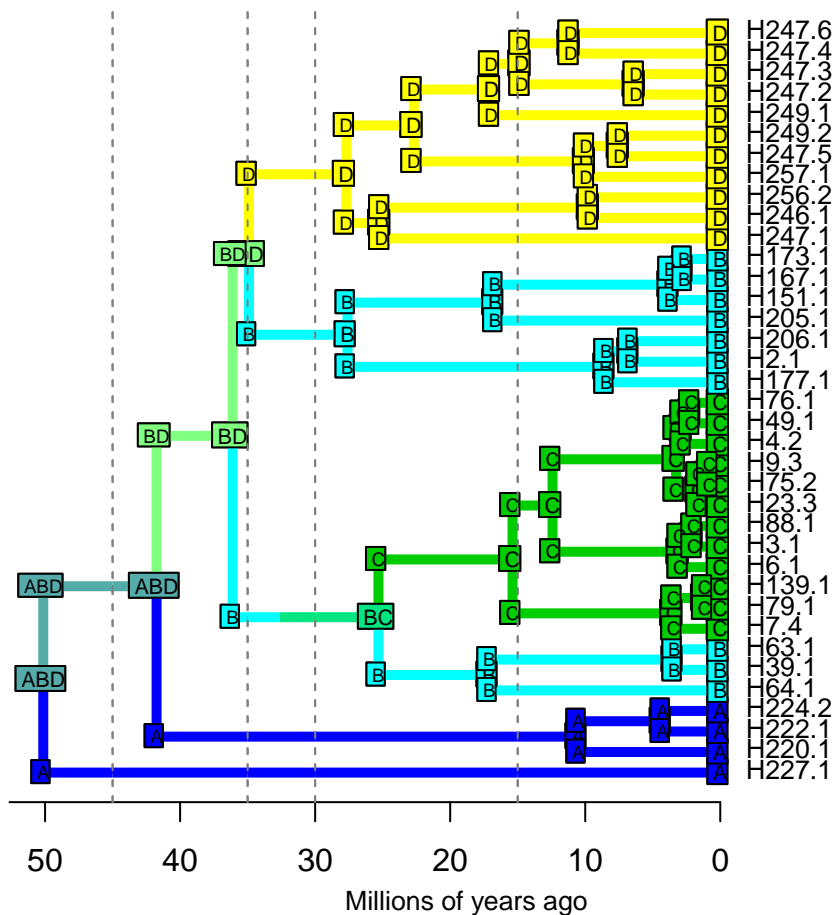
DEC – Stochastic Map #92/100

ancstates: global optim, 3 areas max. d=0.0119; e=0; x=-0.5308; j=0; LnL=-16.34



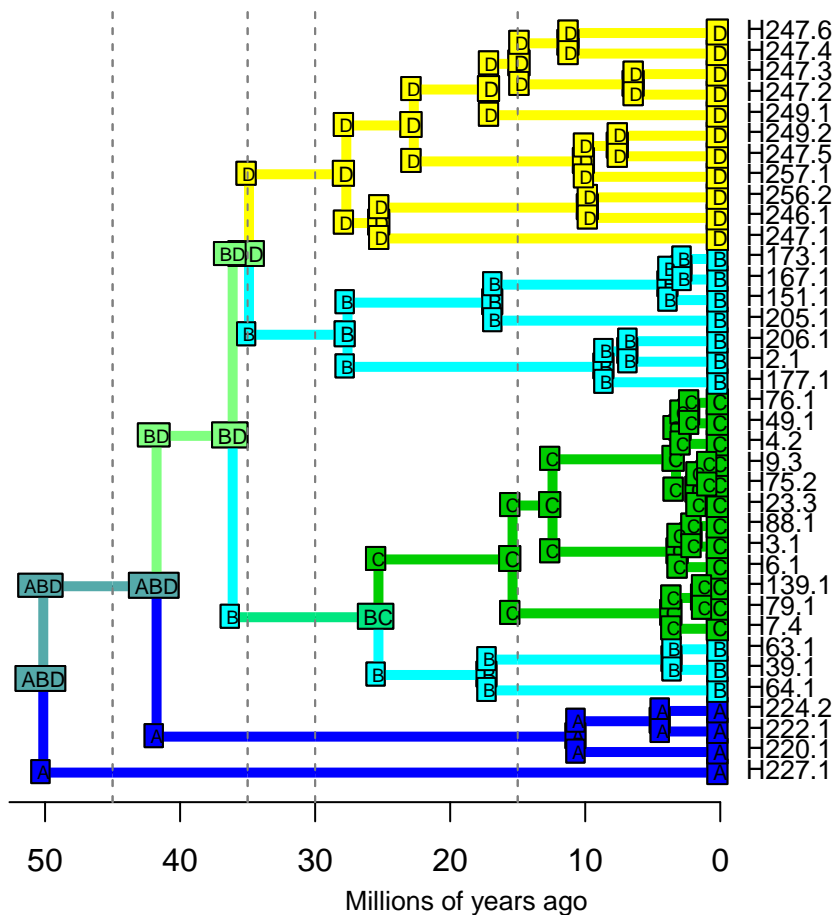
DEC – Stochastic Map #93/100

ancstates: global optim, 3 areas max. d=0.0119; e=0; x=-0.5308; j=0; LnL=-16.34



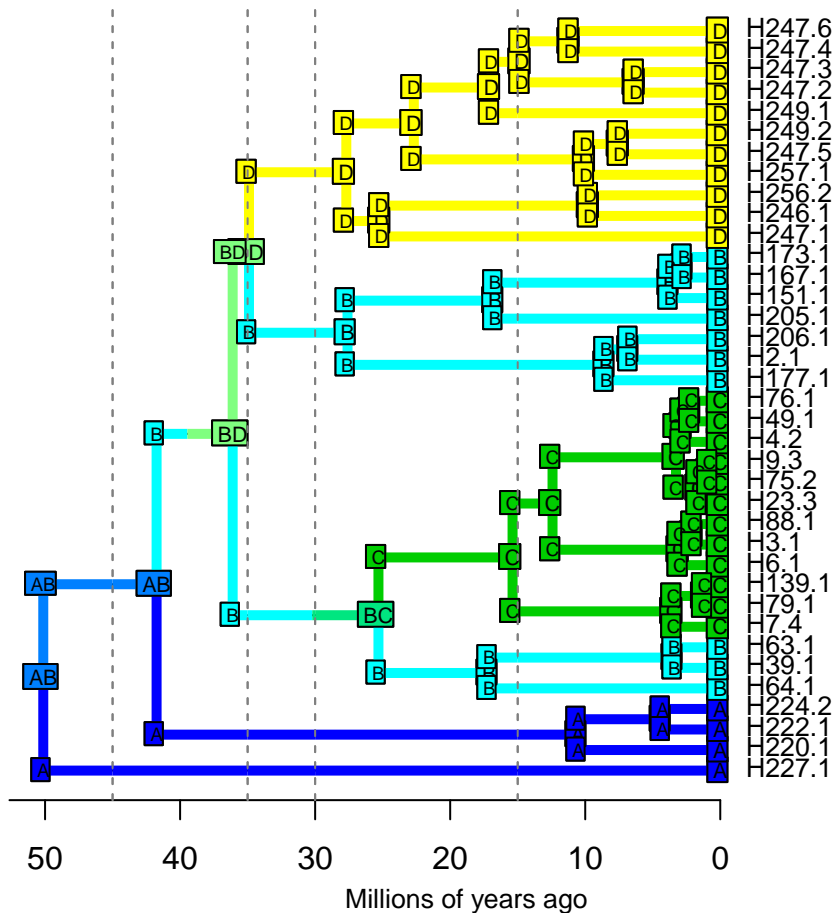
DEC – Stochastic Map #94/100

ancstates: global optim, 3 areas max. d=0.0119; e=0; x=-0.5308; j=0; LnL=-16.34



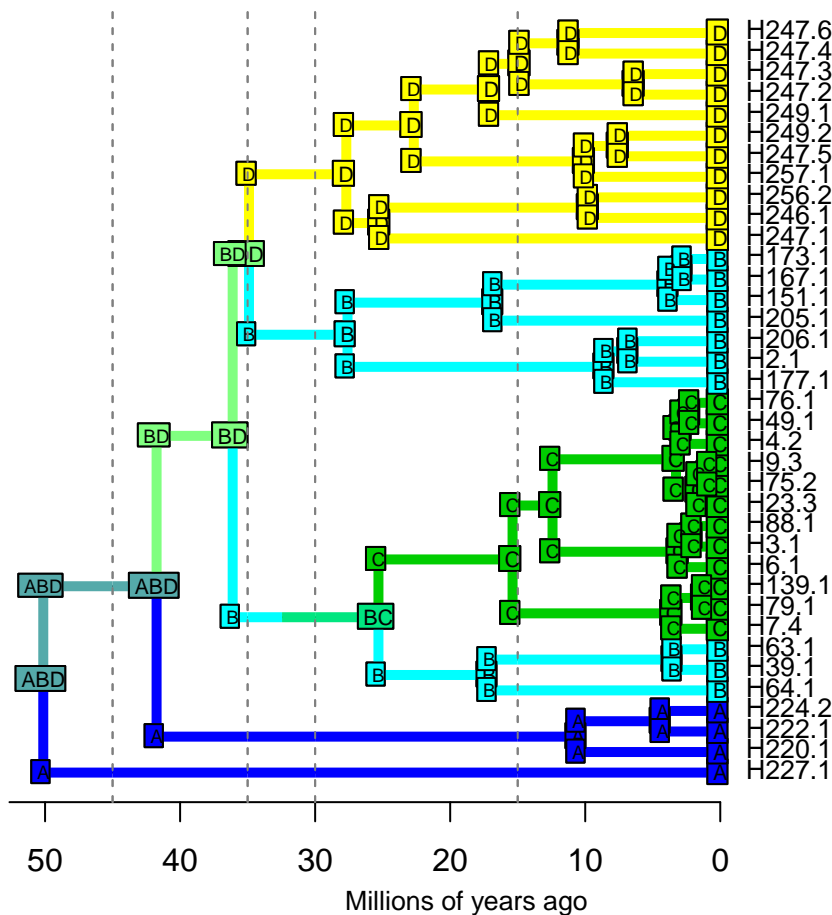
DEC – Stochastic Map #95/100

ancstates: global optim, 3 areas max. d=0.0119; e=0; x=-0.5308; j=0; LnL=-16.34



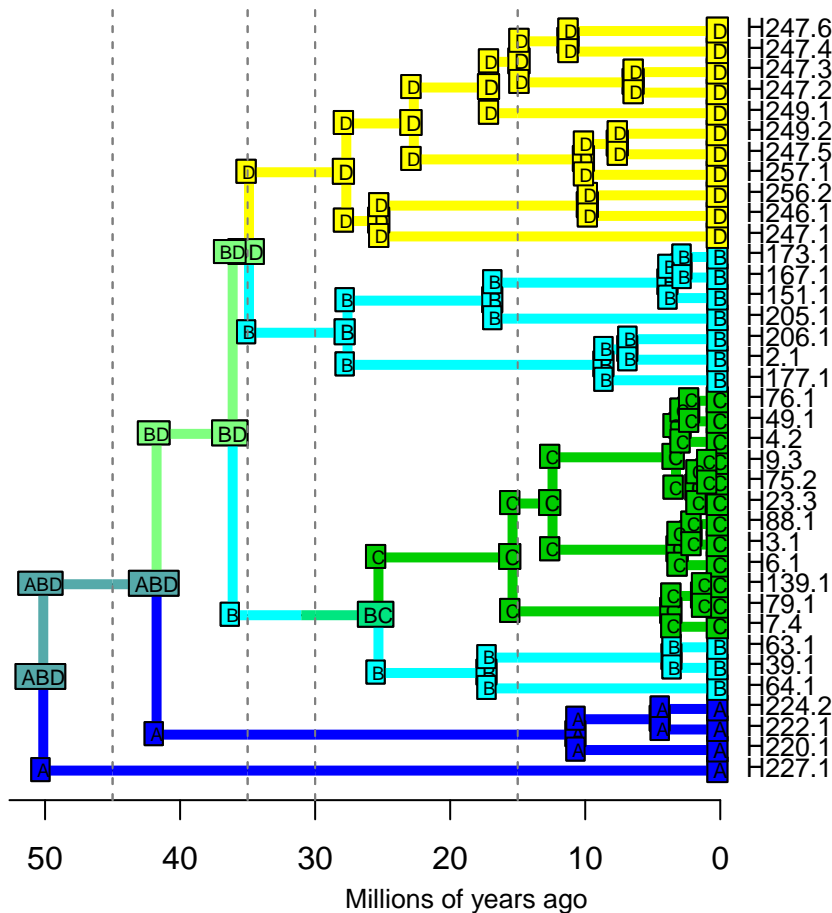
DEC – Stochastic Map #97/100

ancstates: global optim, 3 areas max. d=0.0119; e=0; x=-0.5308; j=0; LnL=-16.34



DEC – Stochastic Map #98/100

ancstates: global optim, 3 areas max. d=0.0119; e=0; x=-0.5308; j=0; LnL=-16.34



DEC – Stochastic Map #99/100

ancstates: global optim, 3 areas max. d=0.0119; e=0; x=-0.5308; j=0; LnL=-16.34

