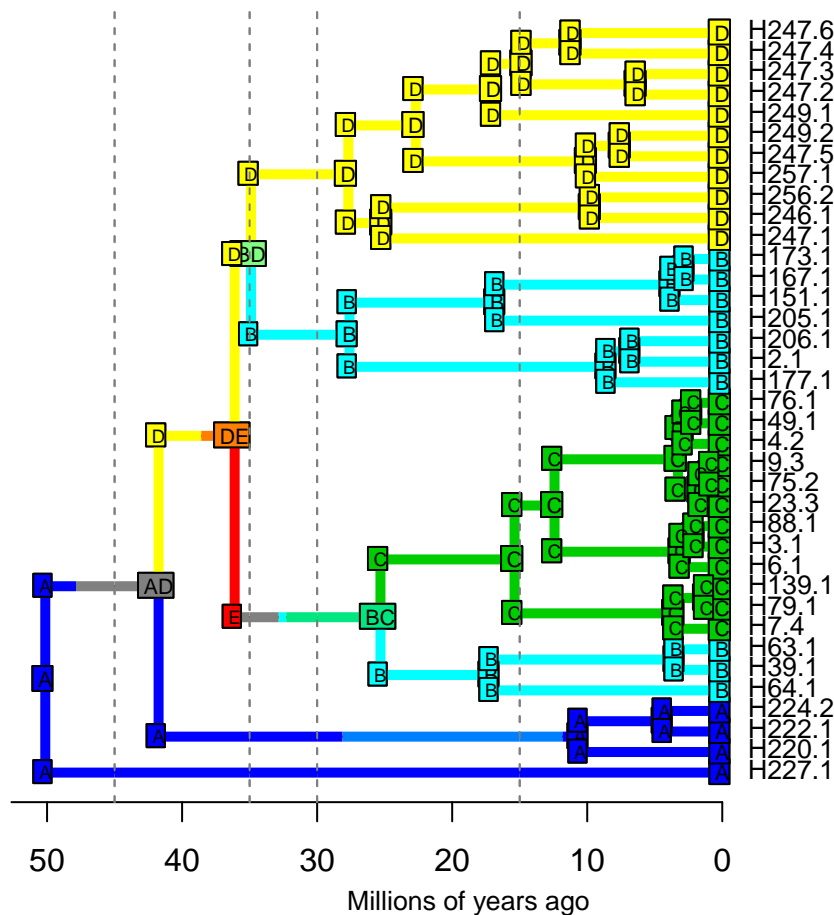


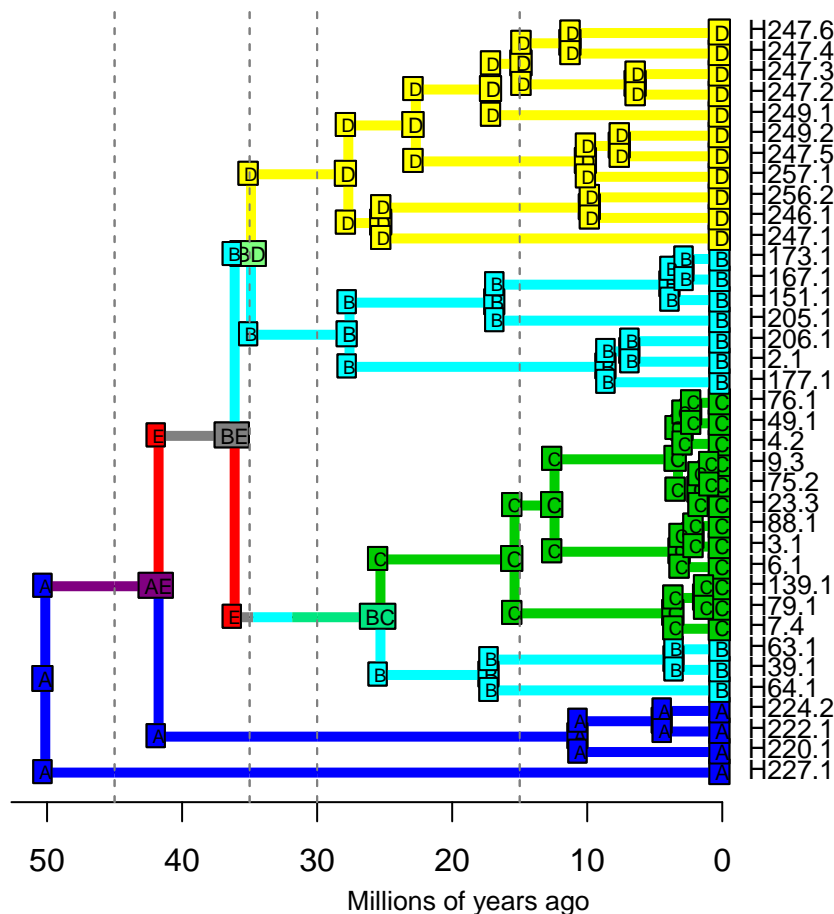
DIVALIKE – Stochastic Map #1/50

ancstates: global optim, 2 areas max. d=1.0875; e=0.0024; j=0; LnL=-23.43



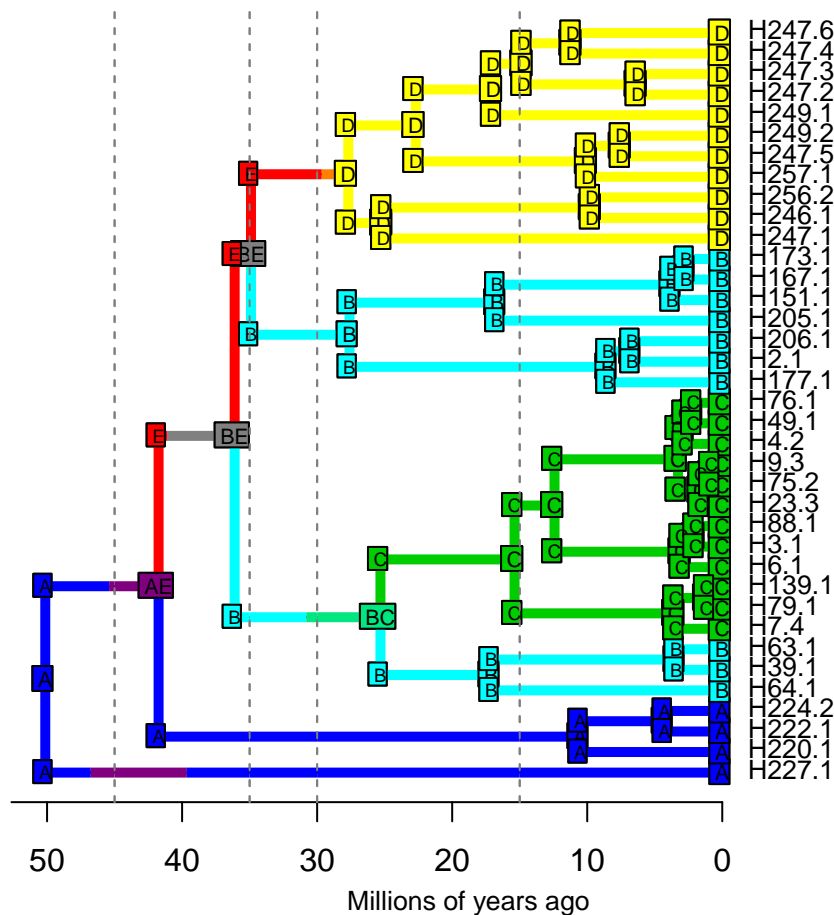
DIVALIKE – Stochastic Map #2/50

ancstates: global optim, 2 areas max. d=1.0875; e=0.0024; j=0; LnL=-23.43



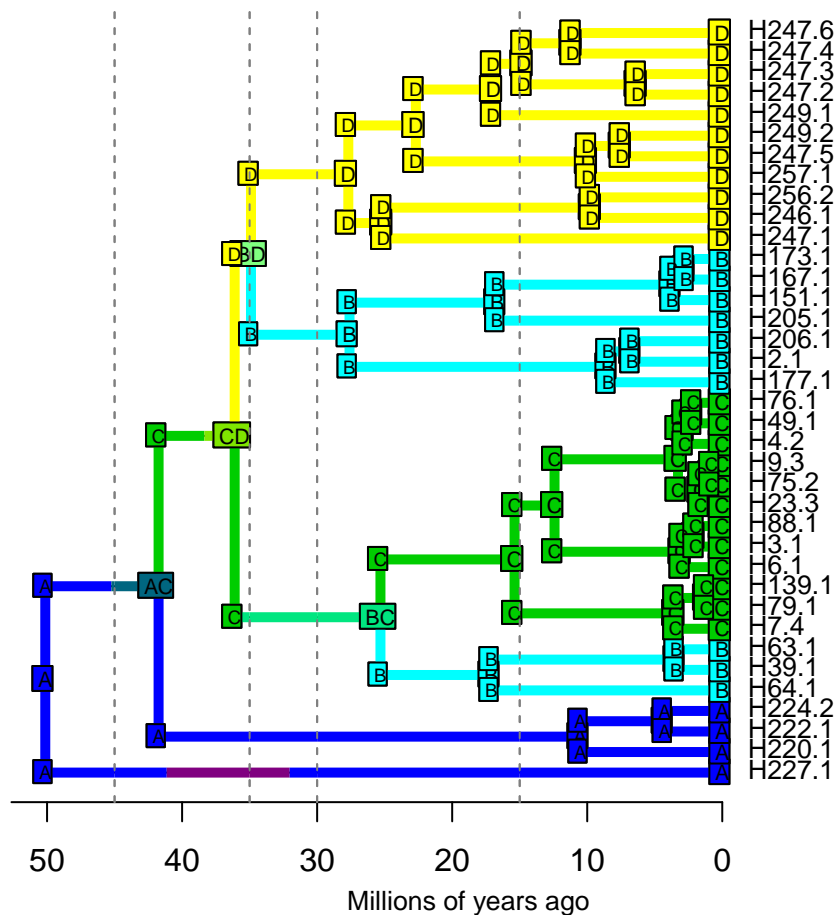
DIVALIKE – Stochastic Map #3/50

ancstates: global optim, 2 areas max. d=1.0875; e=0.0024; j=0; LnL=-23.43



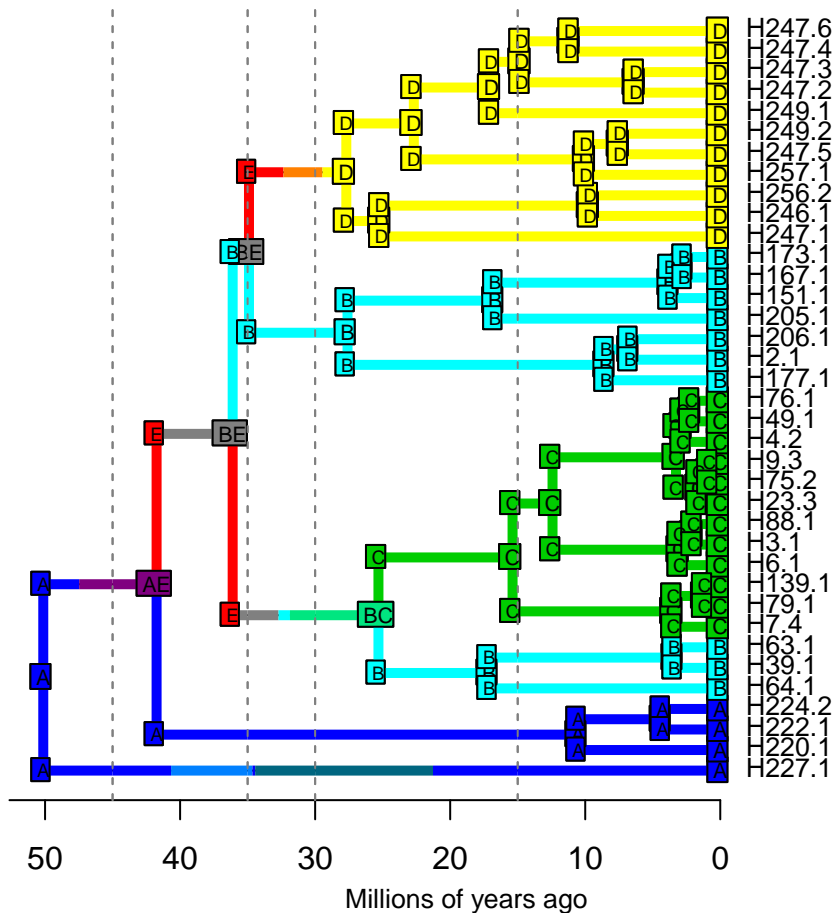
DIVALIKE – Stochastic Map #4/50

ancstates: global optim, 2 areas max. d=1.0875; e=0.0024; j=0; LnL=-23.43



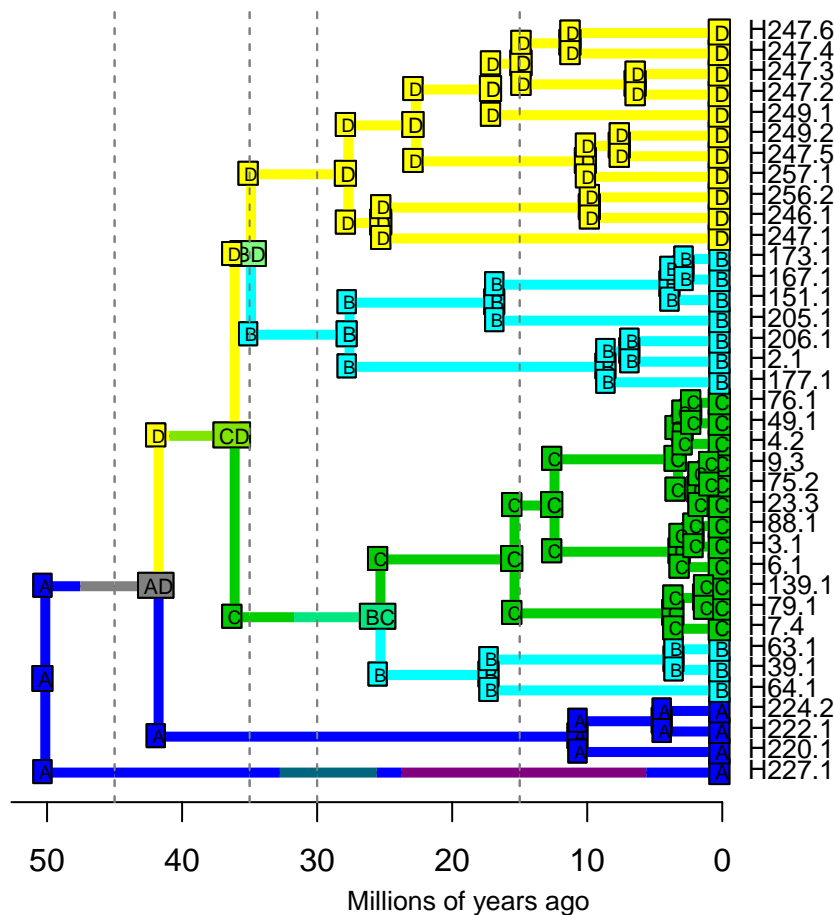
DIVALIKE – Stochastic Map #5/50

ancstates: global optim, 2 areas max. d=1.0875; e=0.0024; j=0; LnL=-23.43



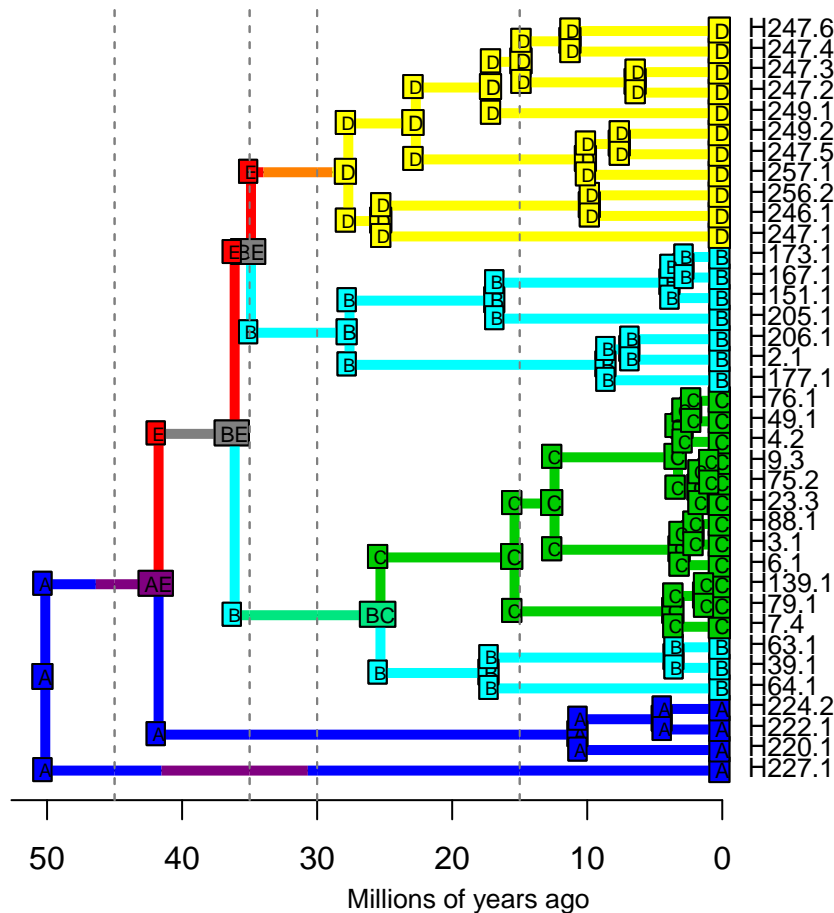
DIVALIKE – Stochastic Map #6/50

ancstates: global optim, 2 areas max. d=1.0875; e=0.0024; j=0; LnL=-23.43



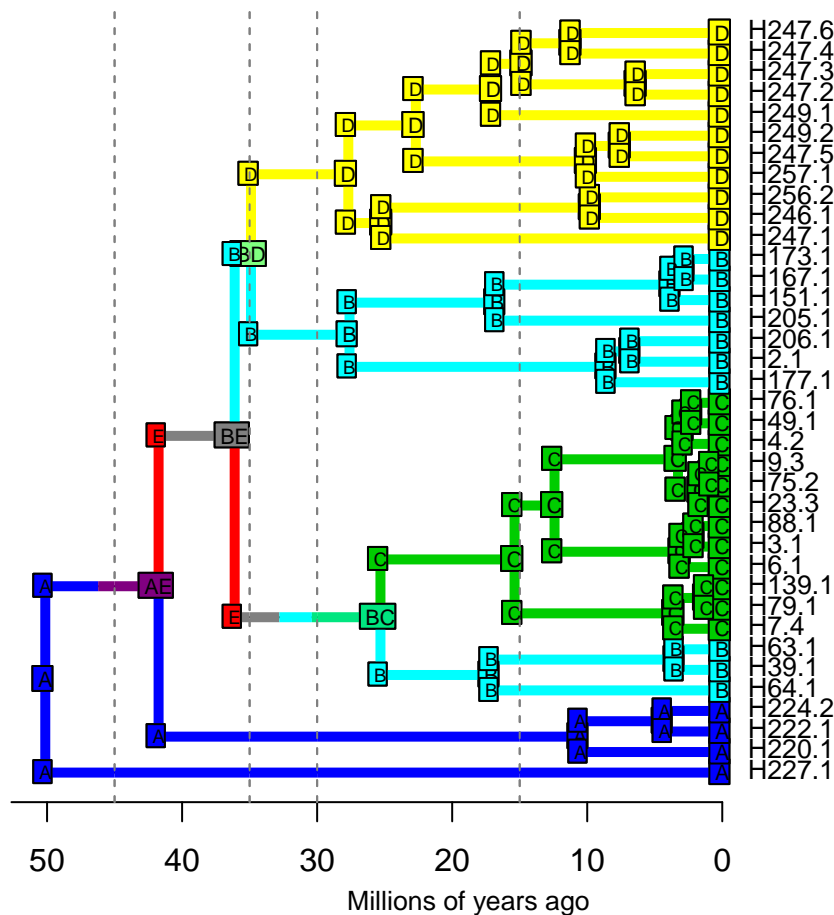
DIVALIKE – Stochastic Map #7/50

ancstates: global optim, 2 areas max. d=1.0875; e=0.0024; j=0; LnL=-23.43



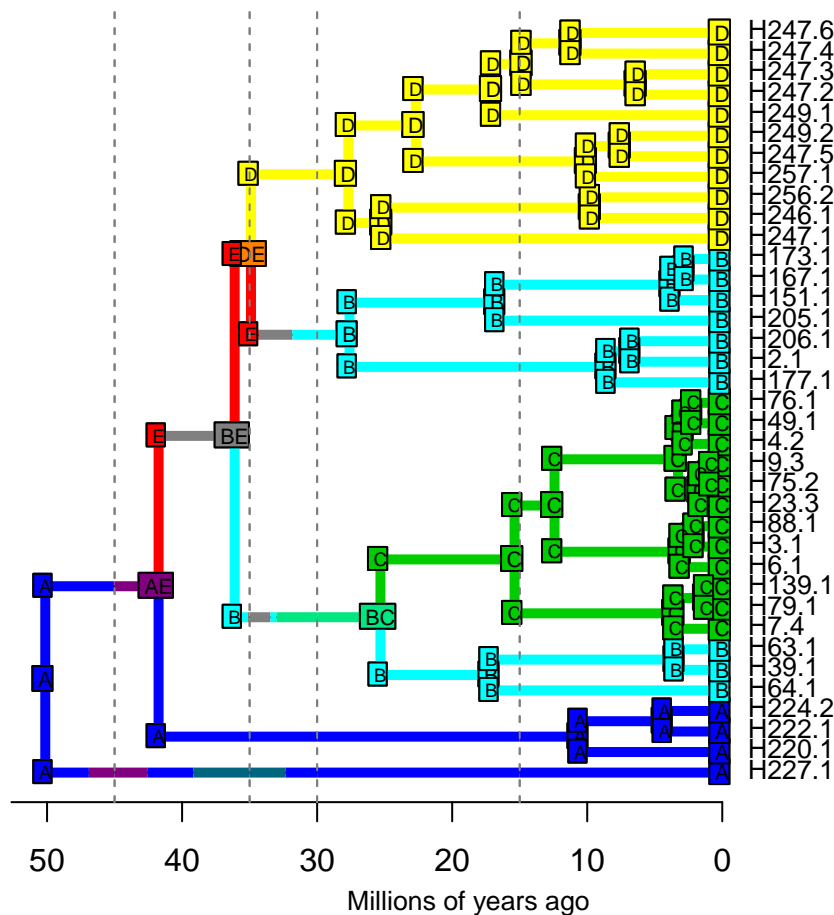
DIVALIKE – Stochastic Map #8/50

ancstates: global optim, 2 areas max. d=1.0875; e=0.0024; j=0; LnL=-23.43



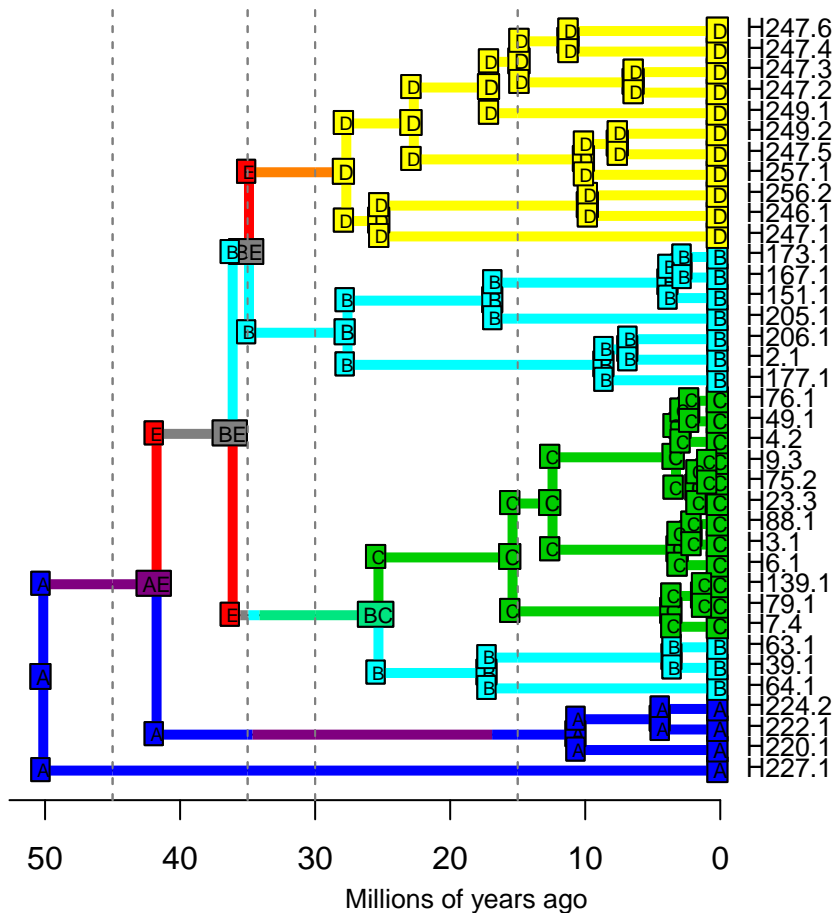
DIVALIKE – Stochastic Map #9/50

ancstates: global optim, 2 areas max. d=1.0875; e=0.0024; j=0; LnL=-23.43



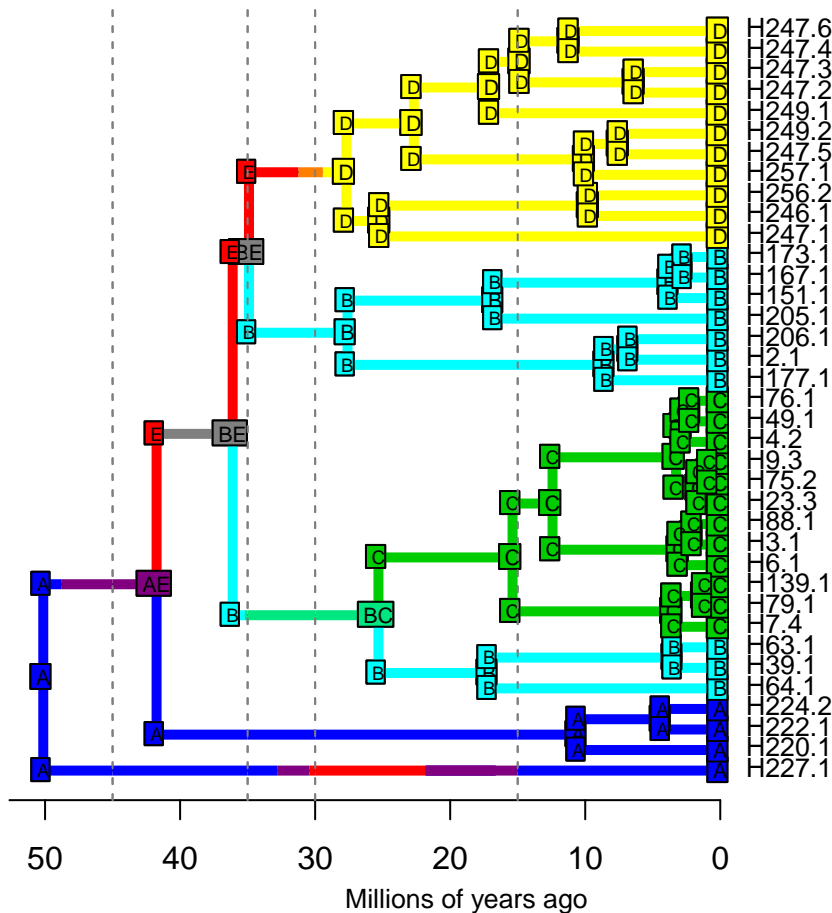
DIVALIKE – Stochastic Map #11/50

ancstates: global optim, 2 areas max. d=1.0875; e=0.0024; j=0; LnL=-23.43



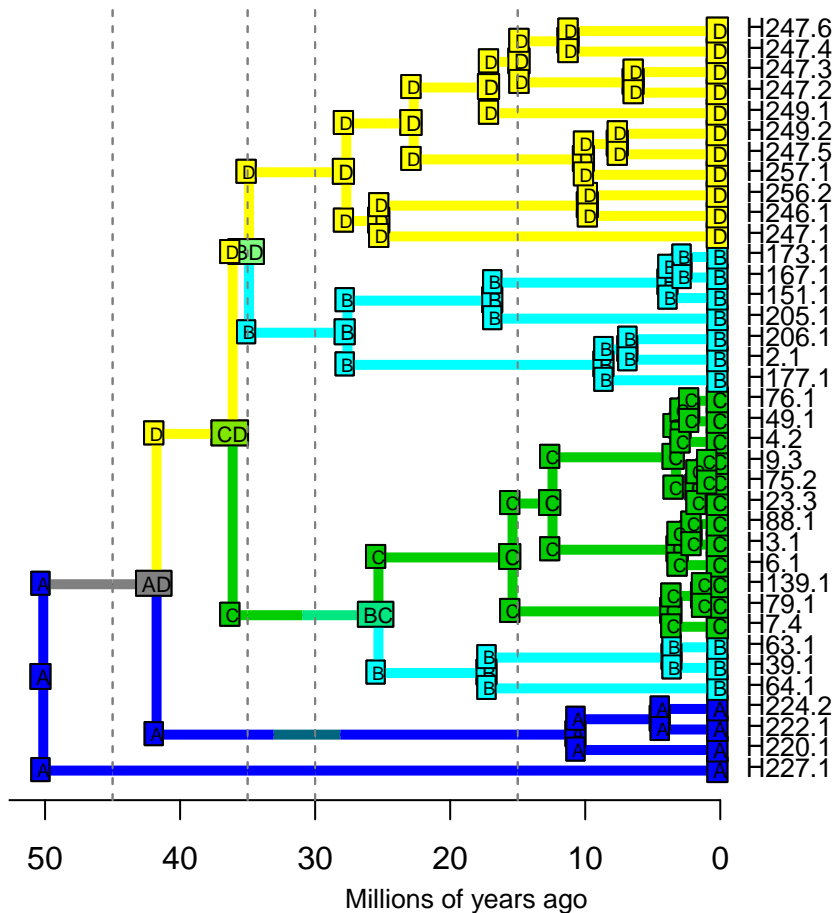
DIVALIKE – Stochastic Map #12/50

ancstates: global optim, 2 areas max. d=1.0875; e=0.0024; j=0; LnL=-23.43



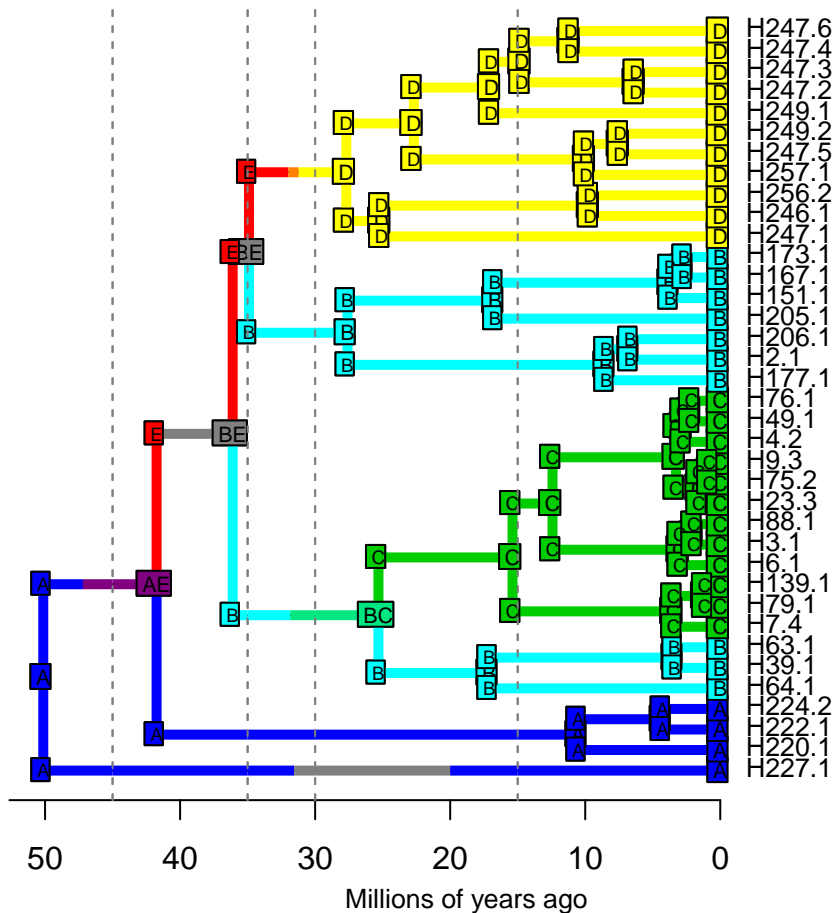
DIVALIKE – Stochastic Map #13/50

ancstates: global optim, 2 areas max. d=1.0875; e=0.0024; j=0; LnL=-23.43



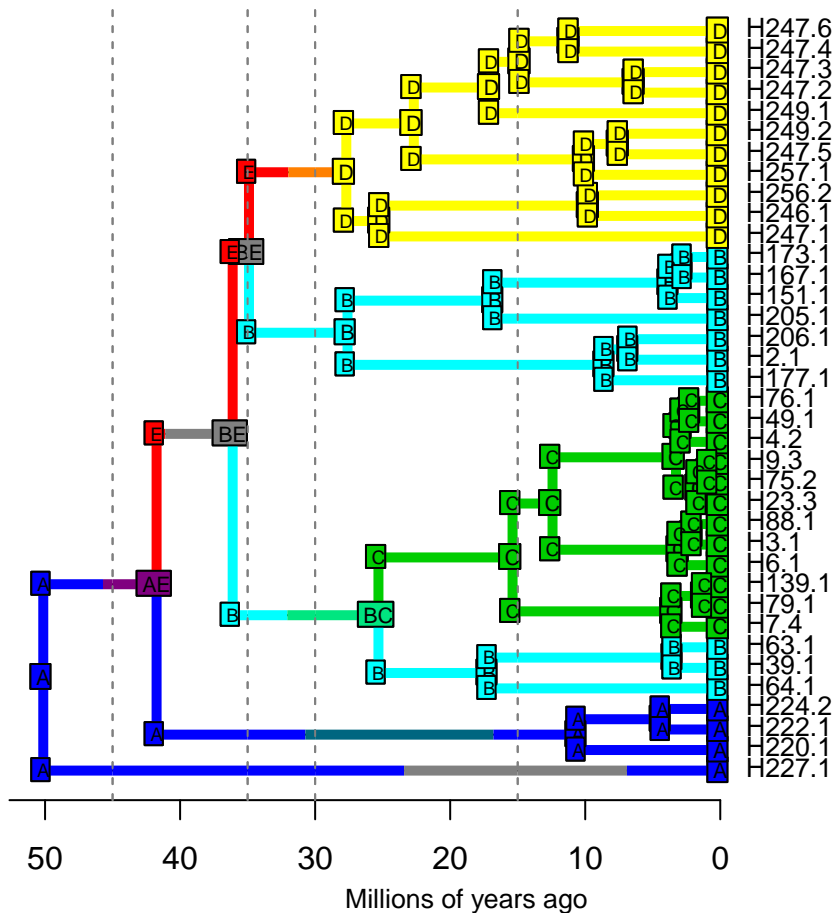
DIVALIKE – Stochastic Map #14/50

ancstates: global optim, 2 areas max. d=1.0875; e=0.0024; j=0; LnL=-23.43



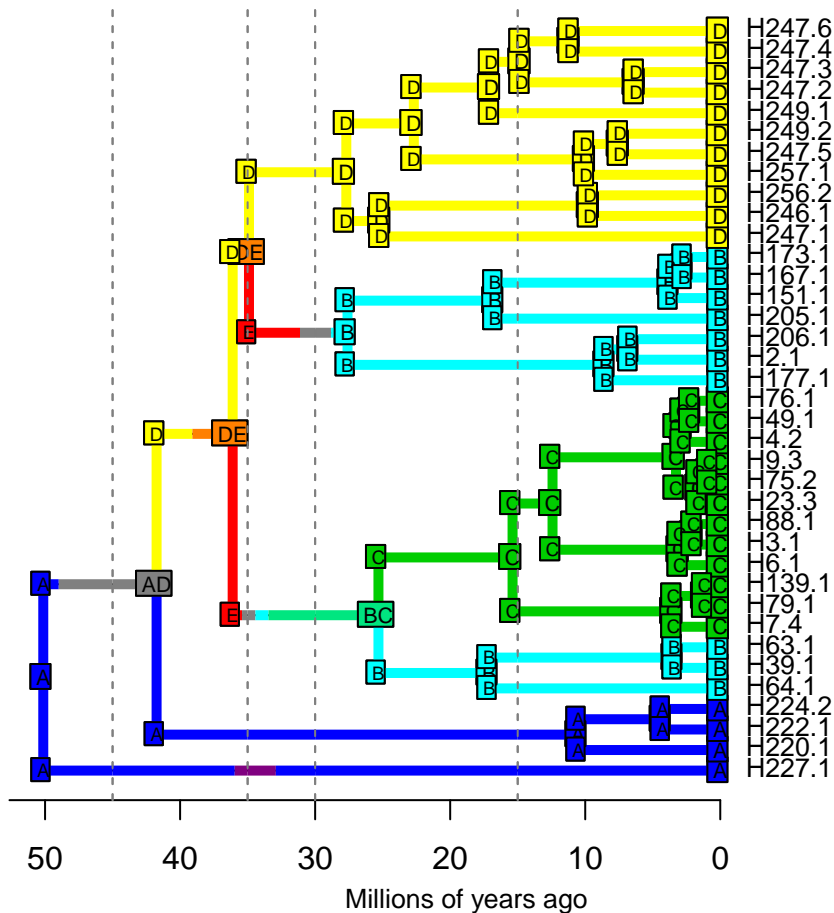
DIVALIKE – Stochastic Map #15/50

ancstates: global optim, 2 areas max. d=1.0875; e=0.0024; j=0; LnL=-23.43



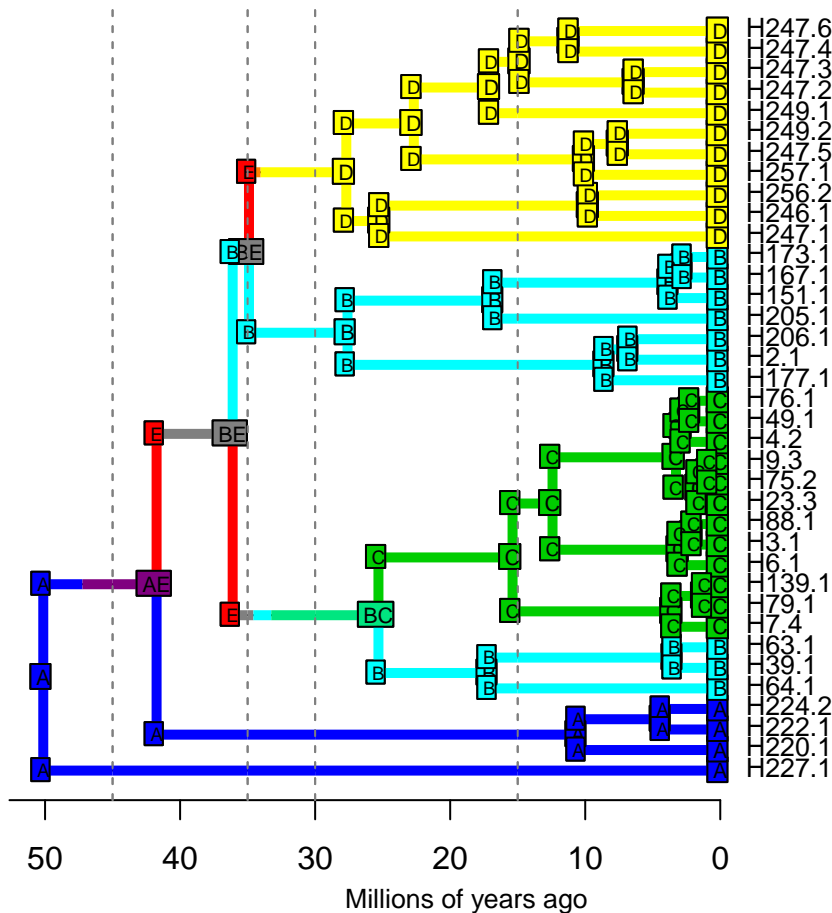
DIVALIKE – Stochastic Map #16/50

ancstates: global optim, 2 areas max. d=1.0875; e=0.0024; j=0; LnL=-23.43



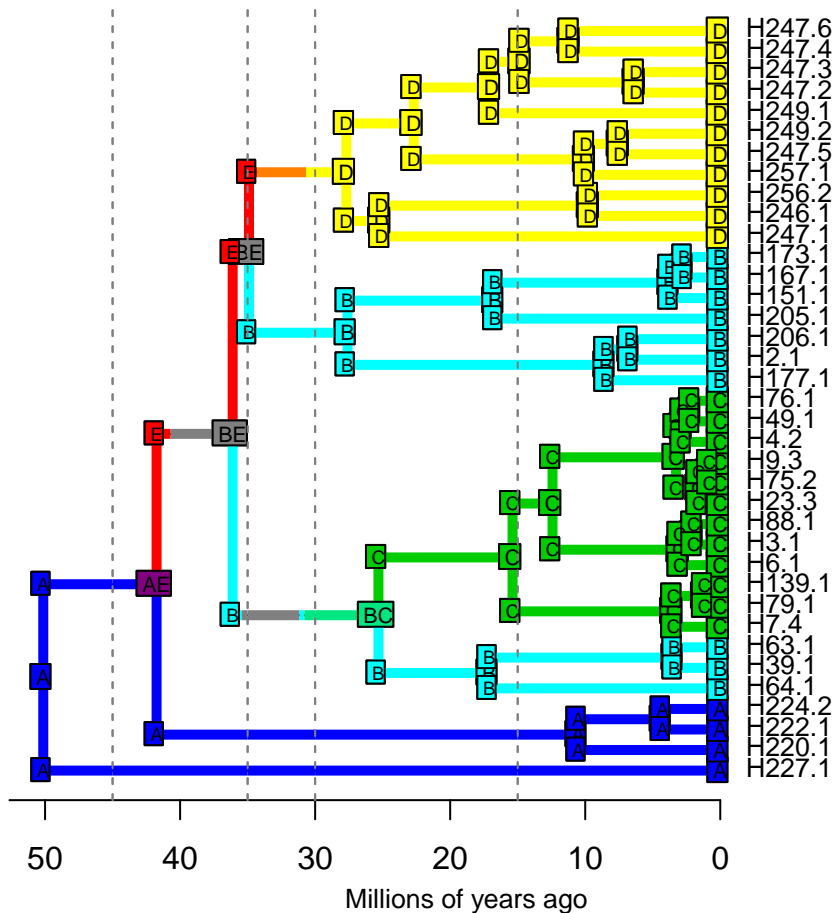
DIVALIKE – Stochastic Map #17/50

ancstates: global optim, 2 areas max. d=1.0875; e=0.0024; j=0; LnL=-23.43



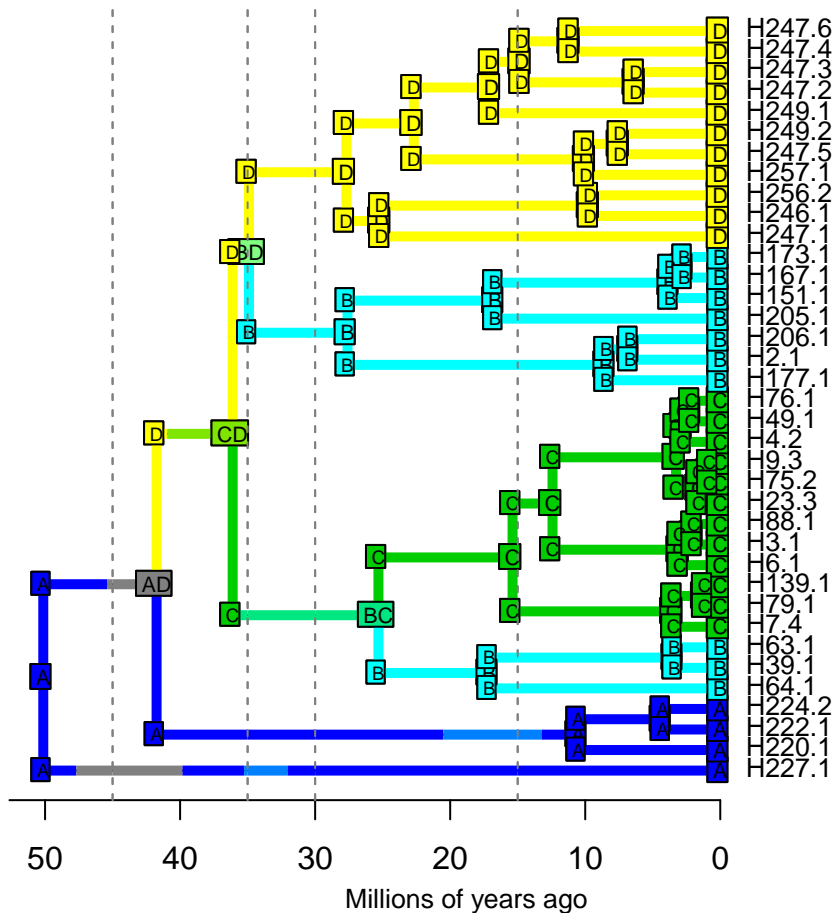
DIVALIKE – Stochastic Map #18/50

ancstates: global optim, 2 areas max. d=1.0875; e=0.0024; j=0; LnL=-23.43



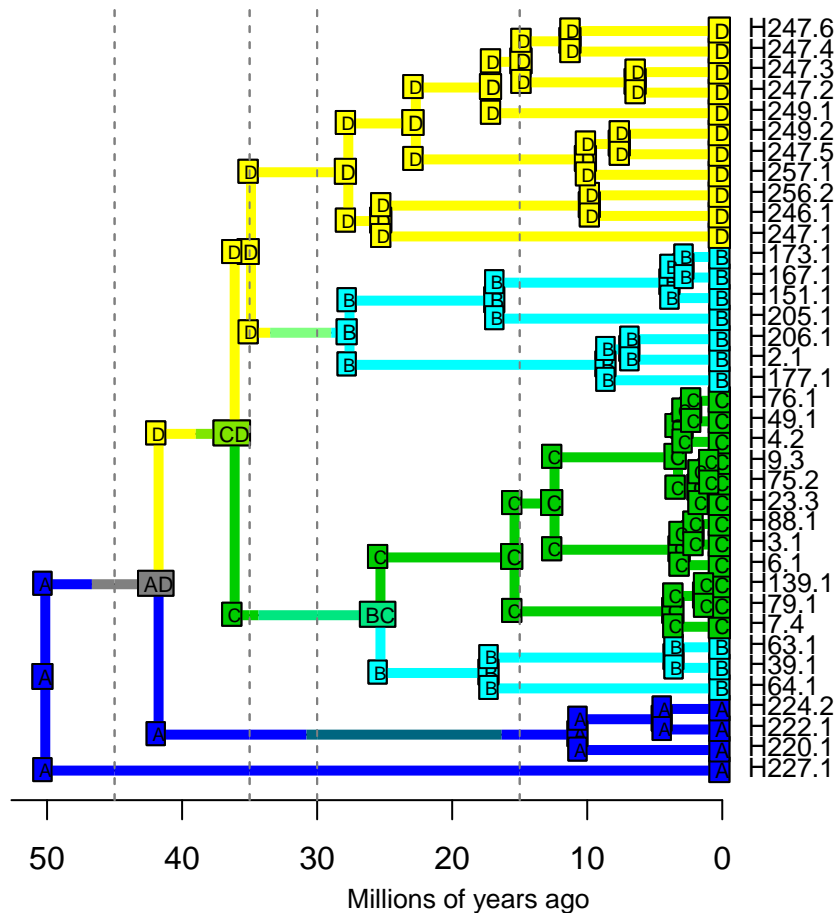
DIVALIKE – Stochastic Map #19/50

ancstates: global optim, 2 areas max. d=1.0875; e=0.0024; j=0; LnL=-23.43



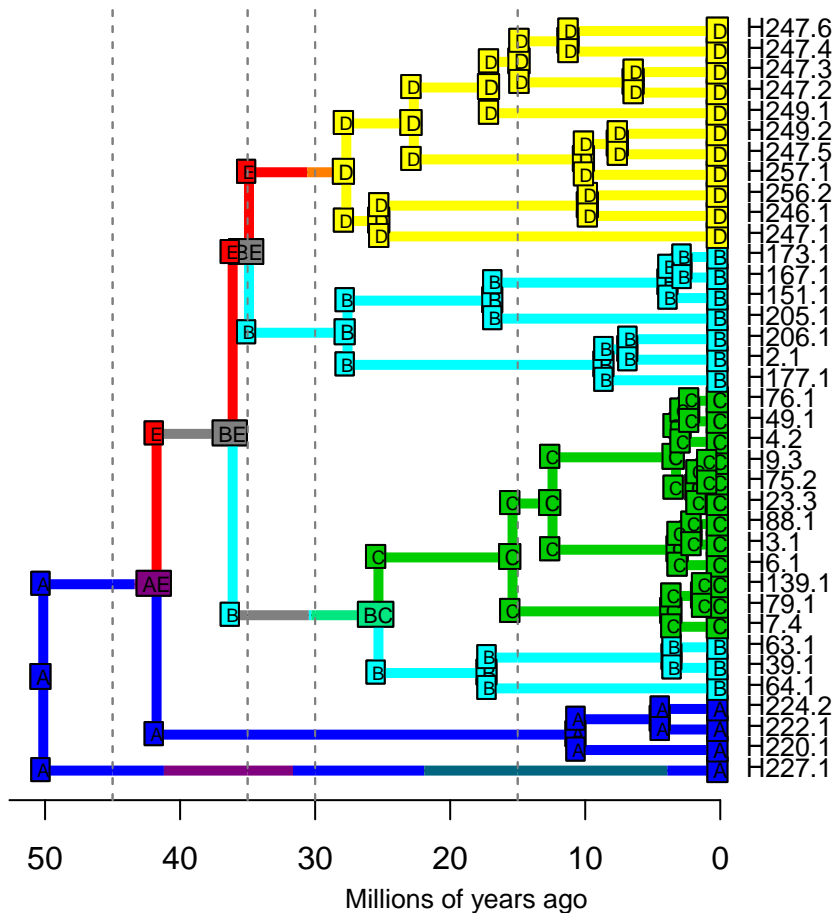
DIVALIKE – Stochastic Map #20/50

ancstates: global optim, 2 areas max. d=1.0875; e=0.0024; j=0; LnL=-23.43



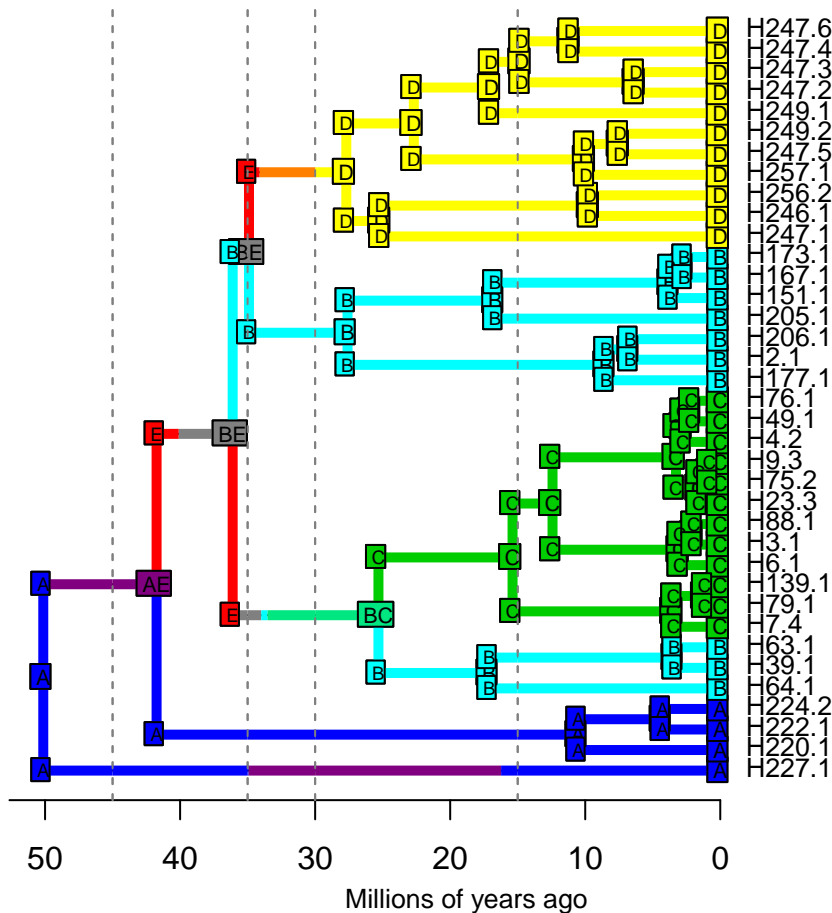
DIVALIKE – Stochastic Map #21/50

ancstates: global optim, 2 areas max. d=1.0875; e=0.0024; j=0; LnL=-23.43



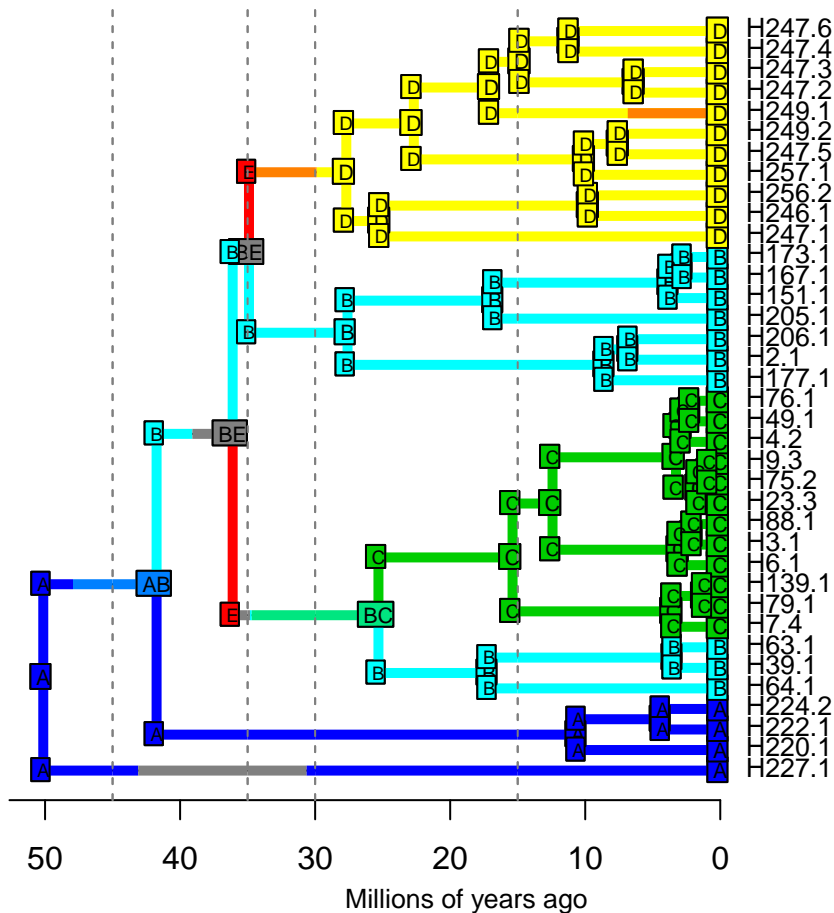
DIVALIKE – Stochastic Map #22/50

ancstates: global optim, 2 areas max. d=1.0875; e=0.0024; j=0; LnL=-23.43



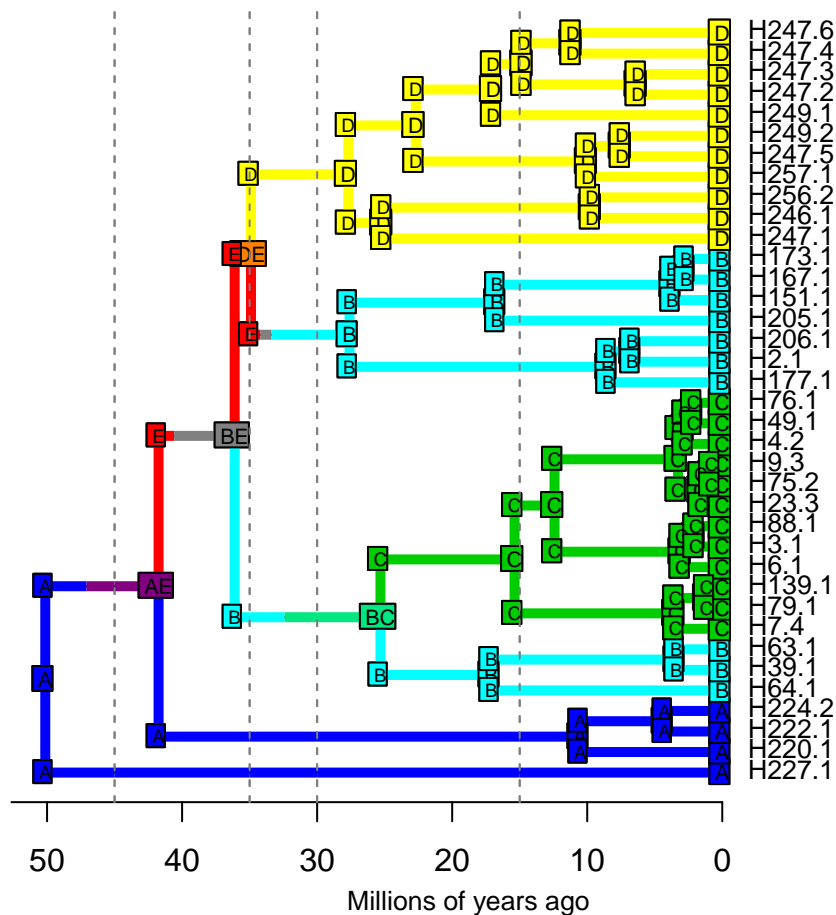
DIVALIKE – Stochastic Map #23/50

ancstates: global optim, 2 areas max. d=1.0875; e=0.0024; j=0; LnL=-23.43

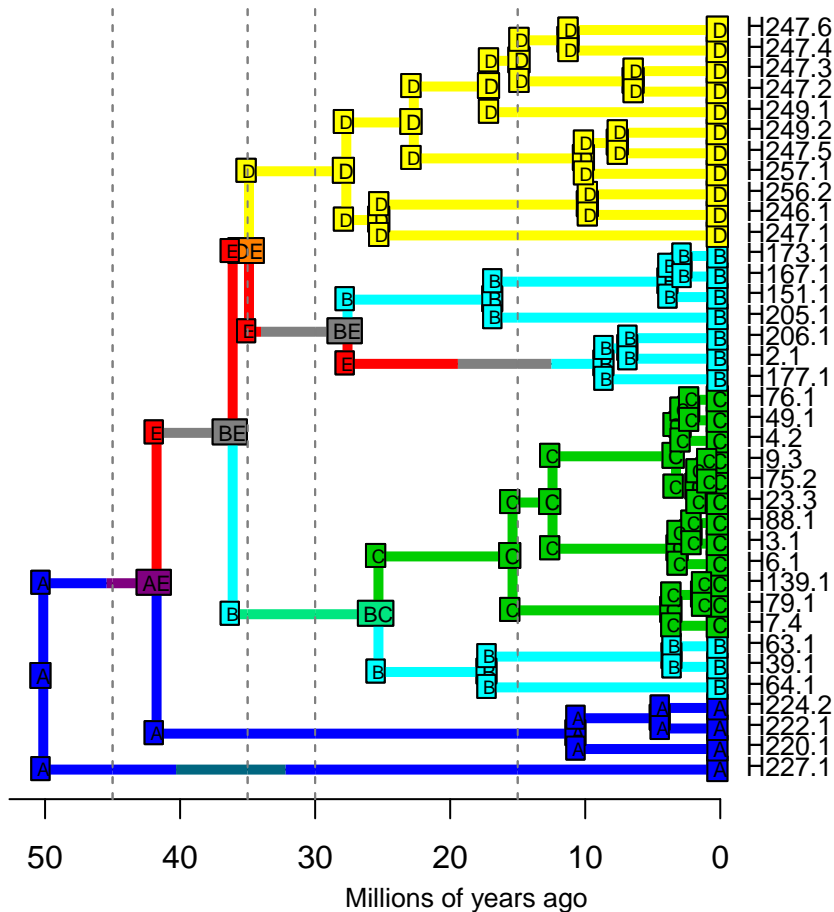


DIVALIKE – Stochastic Map #24/50

ancstates: global optim, 2 areas max. d=1.0875; e=0.0024; j=0; LnL=-23.43

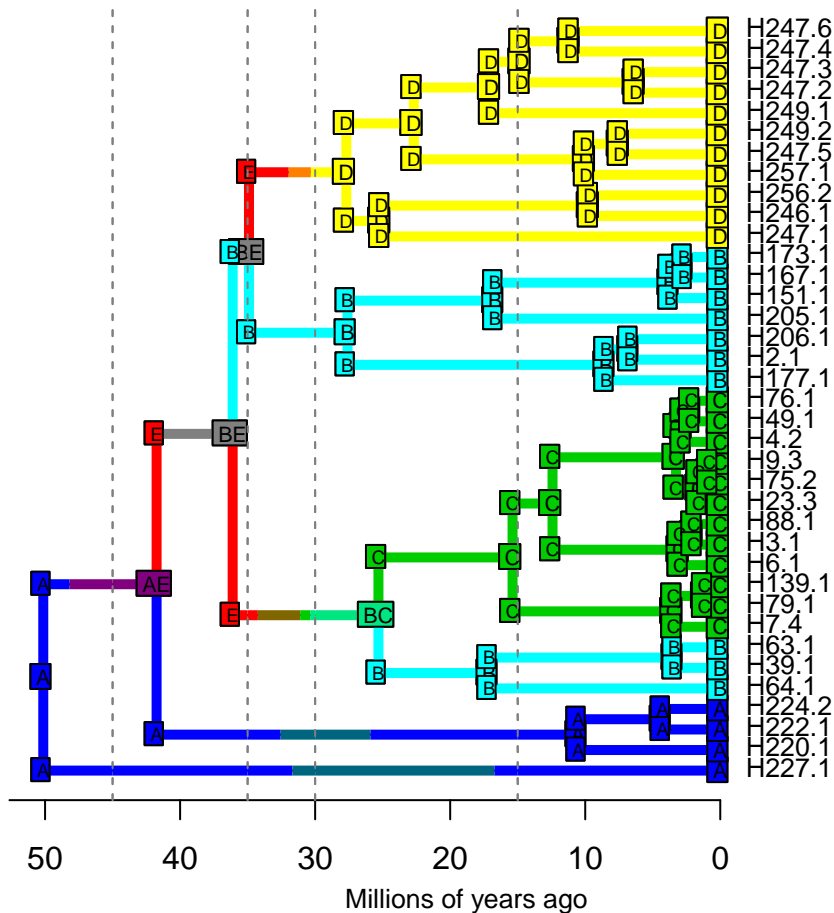


ancstates: global optim, 2 areas max. d=1.0875; e=0.0024; j=0; LnL=-23.43



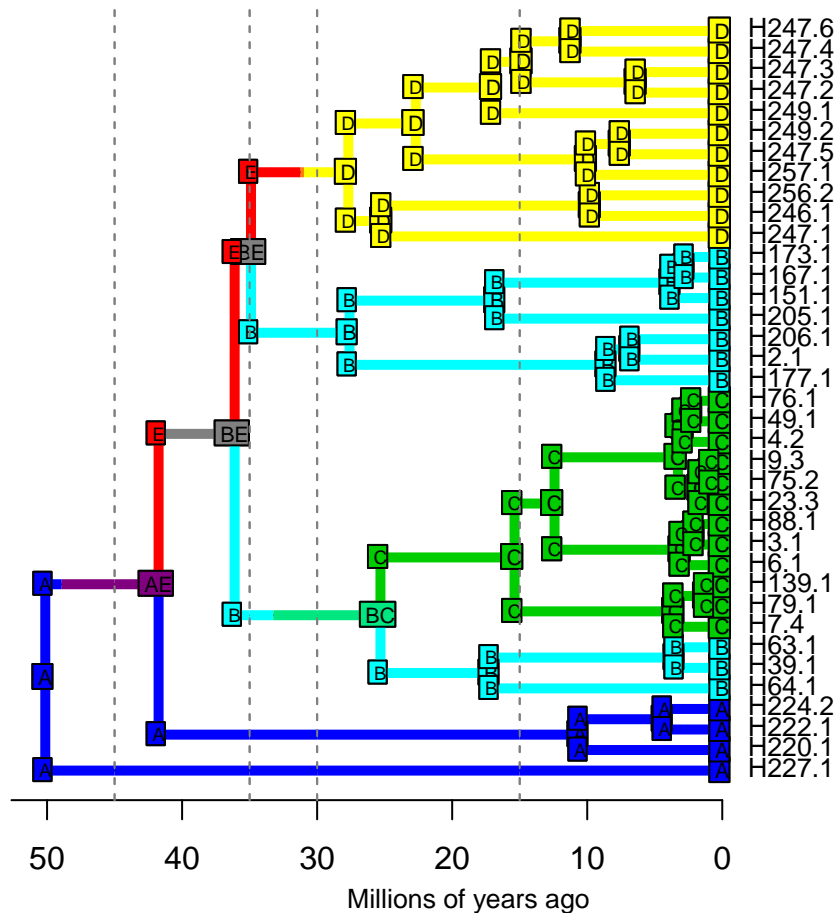
DIVALIKE – Stochastic Map #26/50

ancstates: global optim, 2 areas max. d=1.0875; e=0.0024; j=0; LnL=-23.43



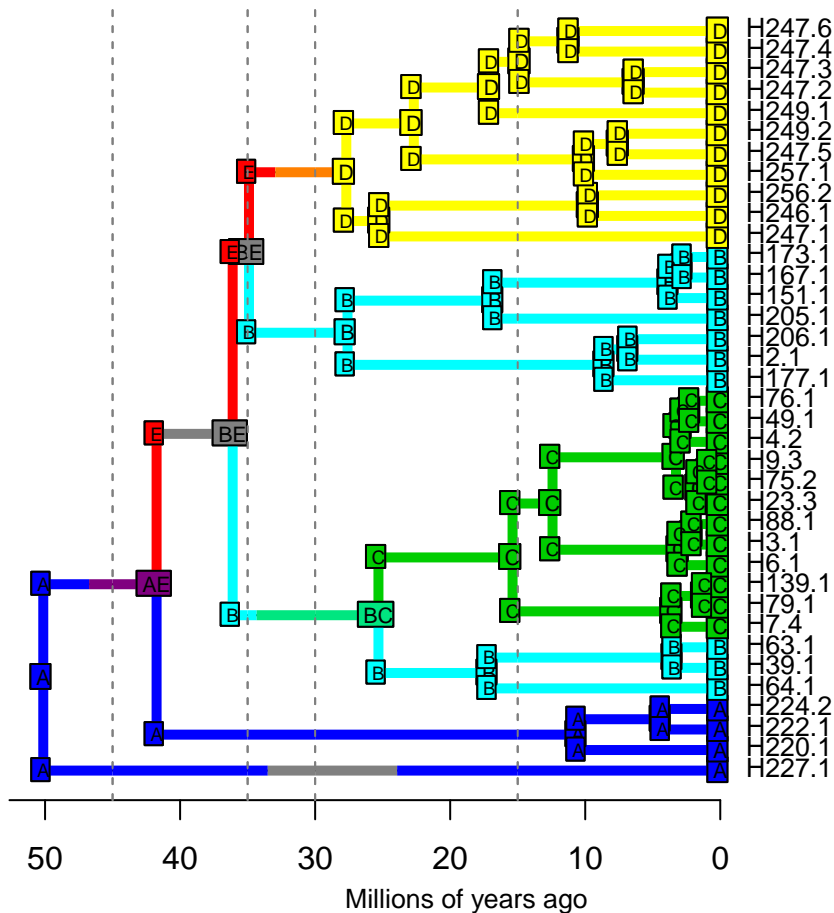
DIVALIKE – Stochastic Map #27/50

ancstates: global optim, 2 areas max. d=1.0875; e=0.0024; j=0; LnL=-23.43



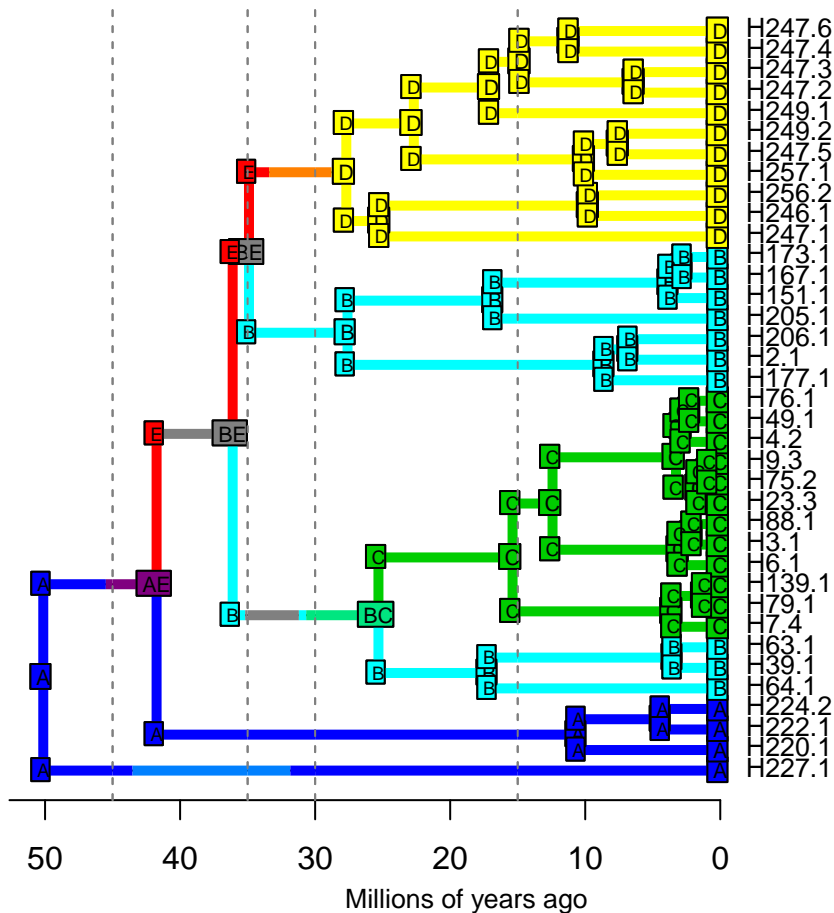
DIVALIKE – Stochastic Map #28/50

ancstates: global optim, 2 areas max. d=1.0875; e=0.0024; j=0; LnL=-23.43



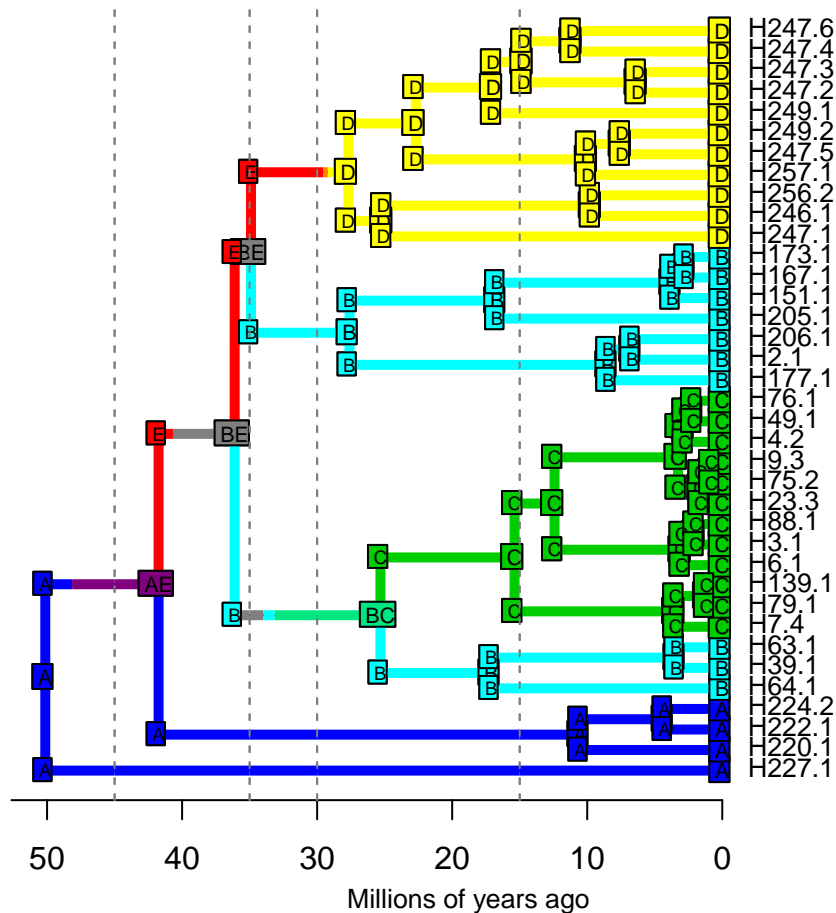
DIVALIKE – Stochastic Map #29/50

ancstates: global optim, 2 areas max. d=1.0875; e=0.0024; j=0; LnL=-23.43



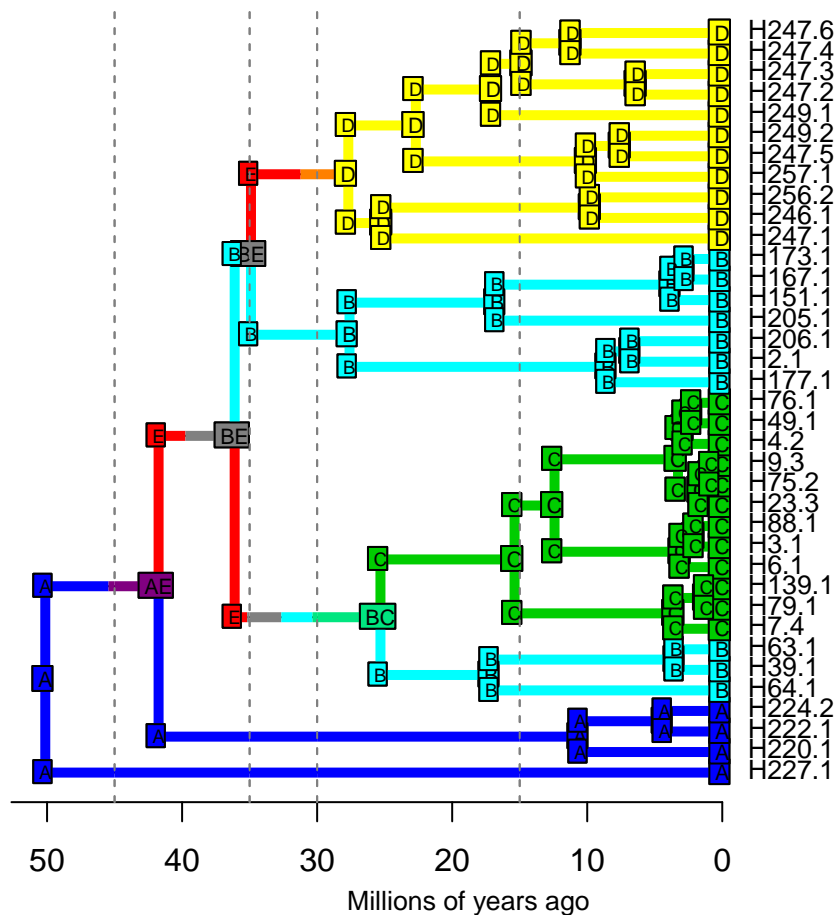
DIVALIKE – Stochastic Map #30/50

ancstates: global optim, 2 areas max. d=1.0875; e=0.0024; j=0; LnL=-23.43



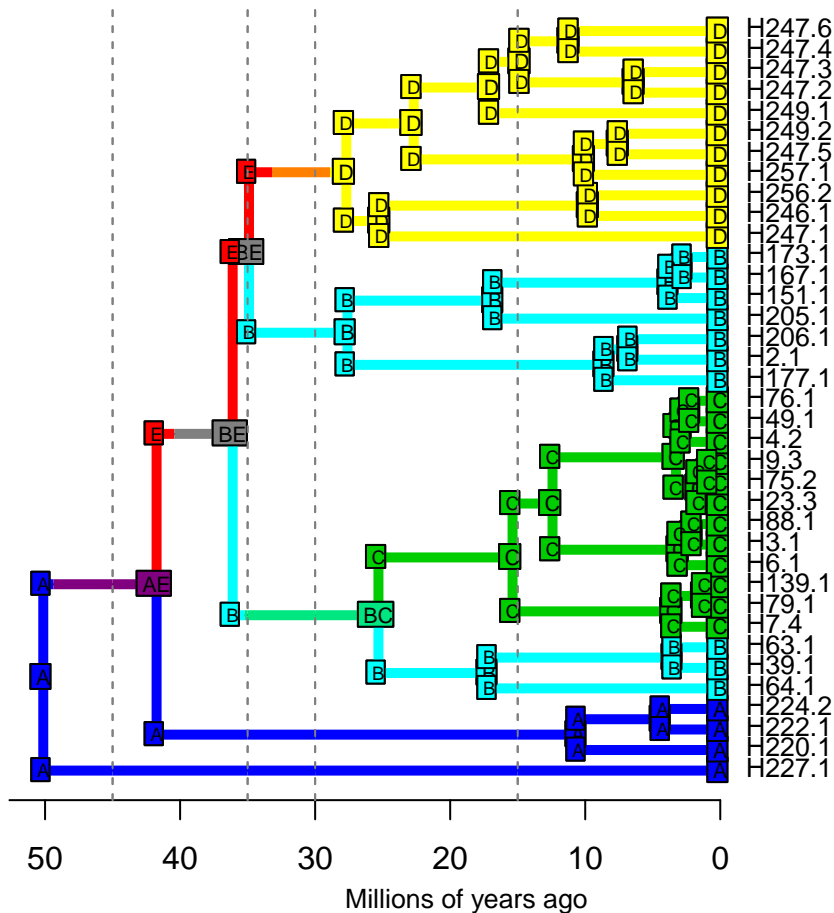
DIVALIKE – Stochastic Map #31/50

ancstates: global optim, 2 areas max. d=1.0875; e=0.0024; j=0; LnL=-23.43



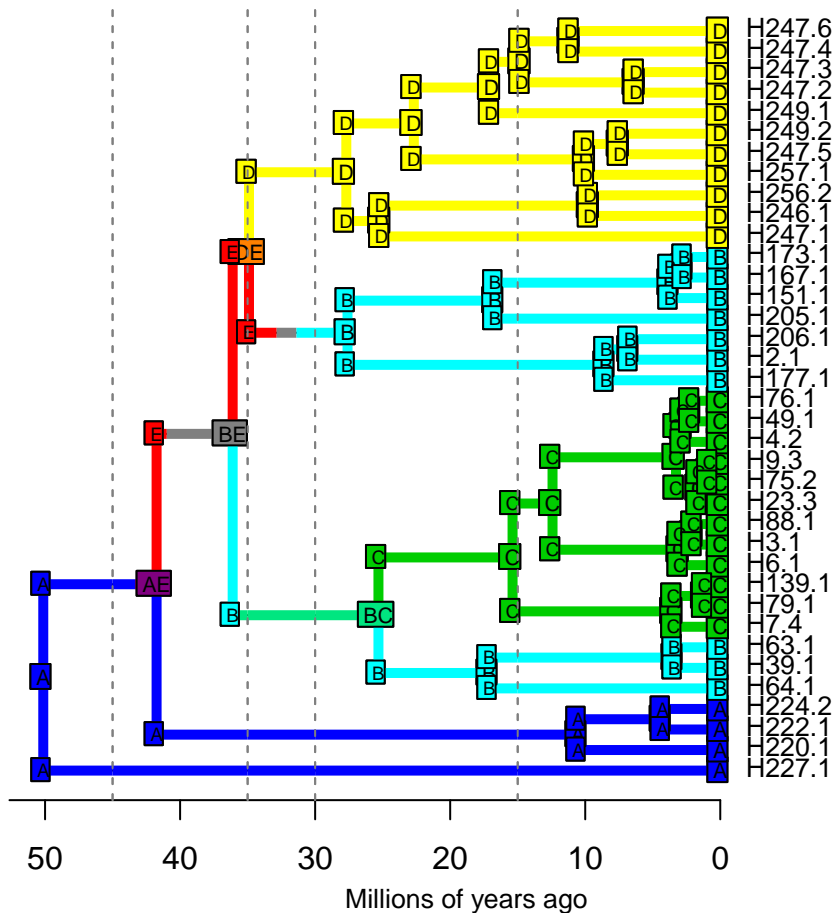
DIVALIKE – Stochastic Map #32/50

ancstates: global optim, 2 areas max. d=1.0875; e=0.0024; j=0; LnL=-23.43



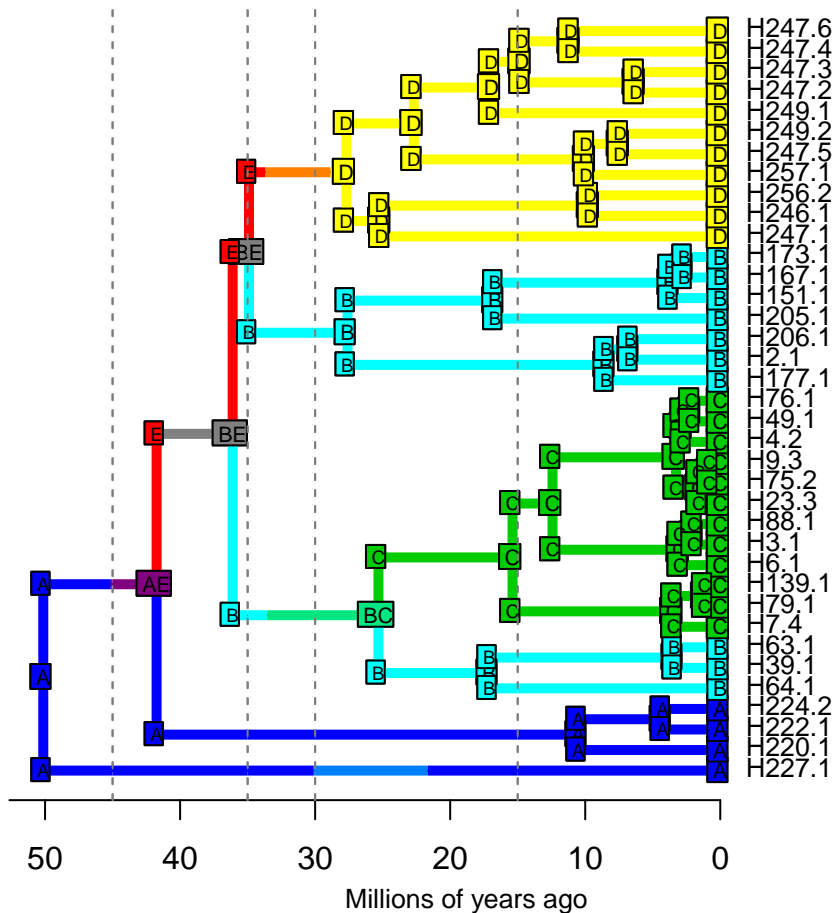
DIVALIKE – Stochastic Map #33/50

ancstates: global optim, 2 areas max. d=1.0875; e=0.0024; j=0; LnL=-23.43



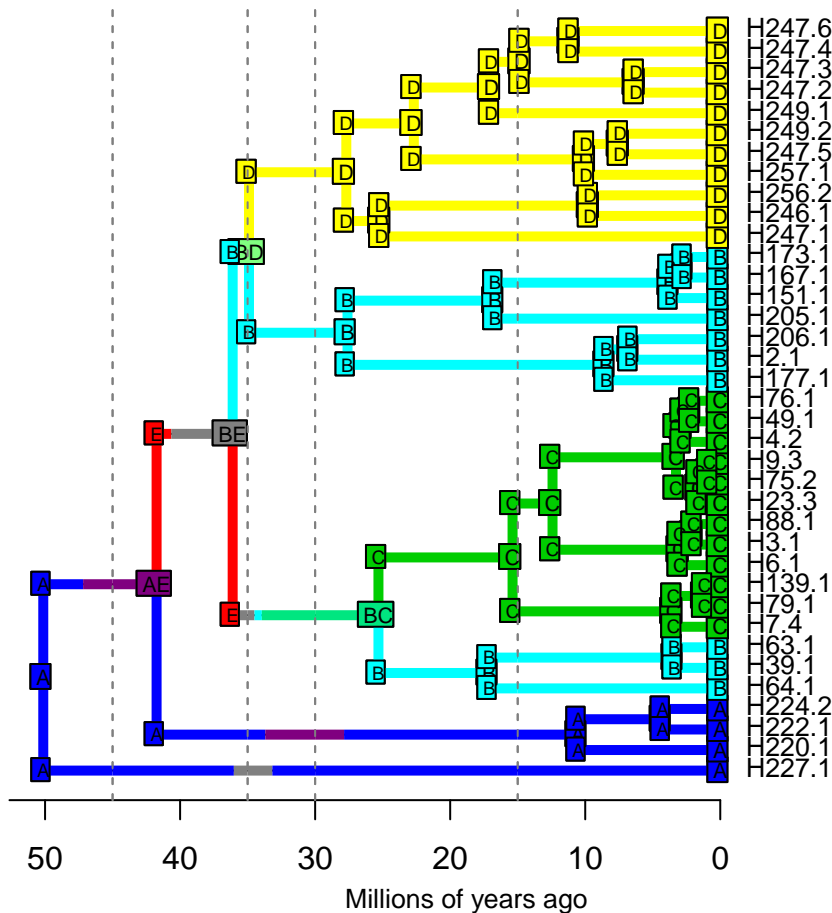
DIVALIKE – Stochastic Map #34/50

ancstates: global optim, 2 areas max. d=1.0875; e=0.0024; j=0; LnL=-23.43



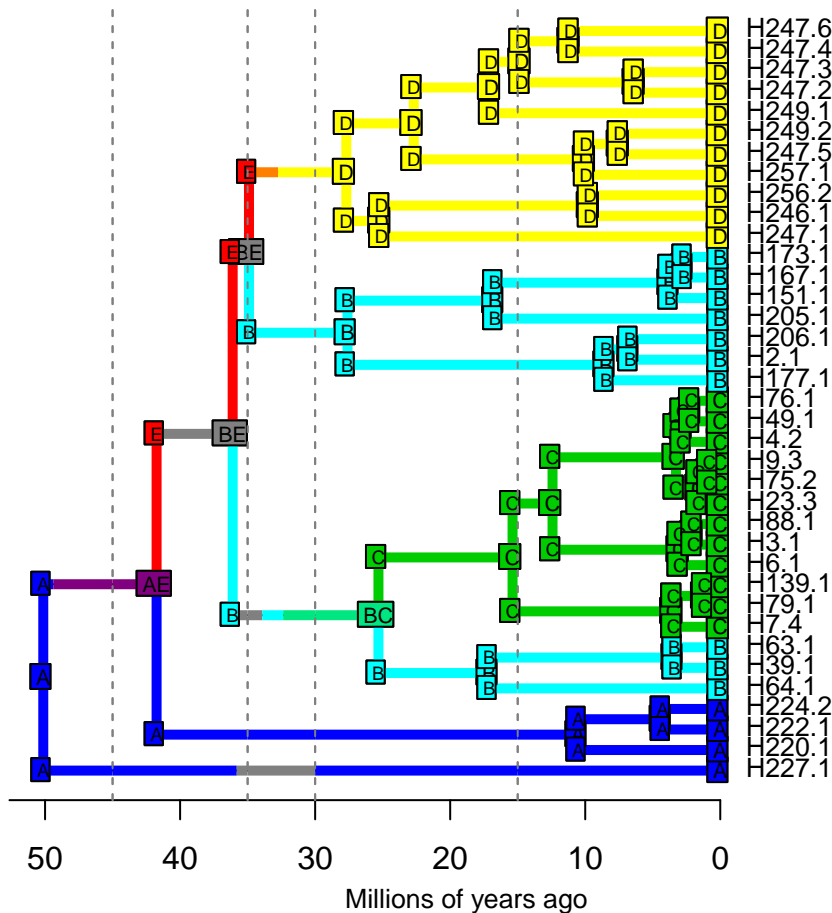
DIVALIKE – Stochastic Map #35/50

ancstates: global optim, 2 areas max. d=1.0875; e=0.0024; j=0; LnL=-23.43



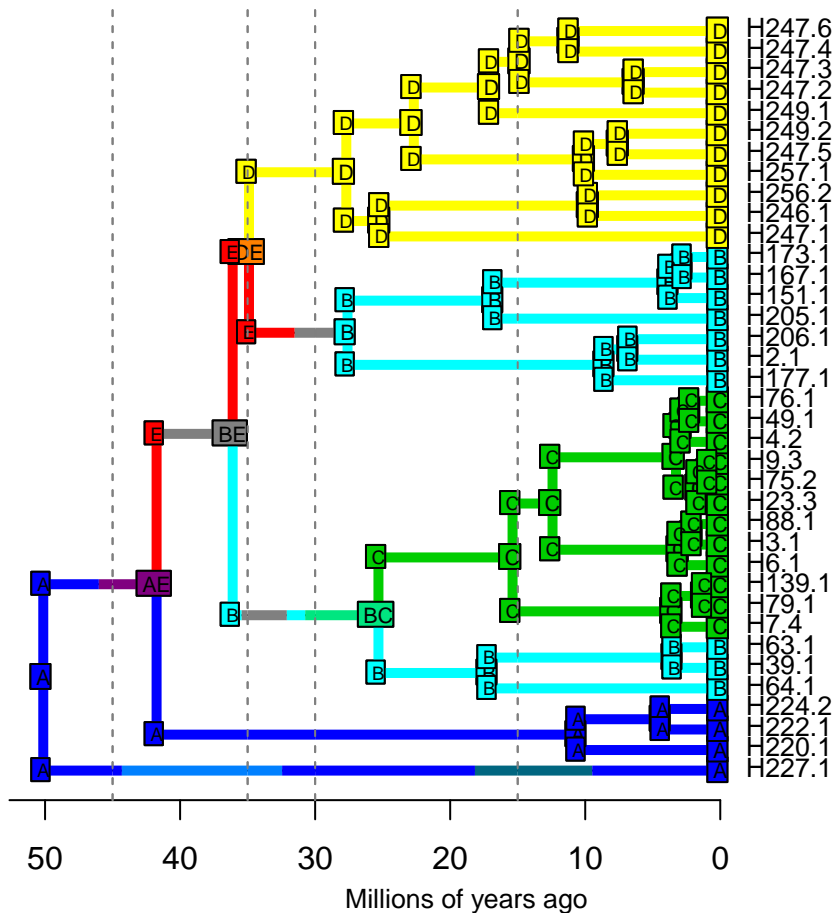
DIVALIKE – Stochastic Map #36/50

ancstates: global optim, 2 areas max. d=1.0875; e=0.0024; j=0; LnL=-23.43

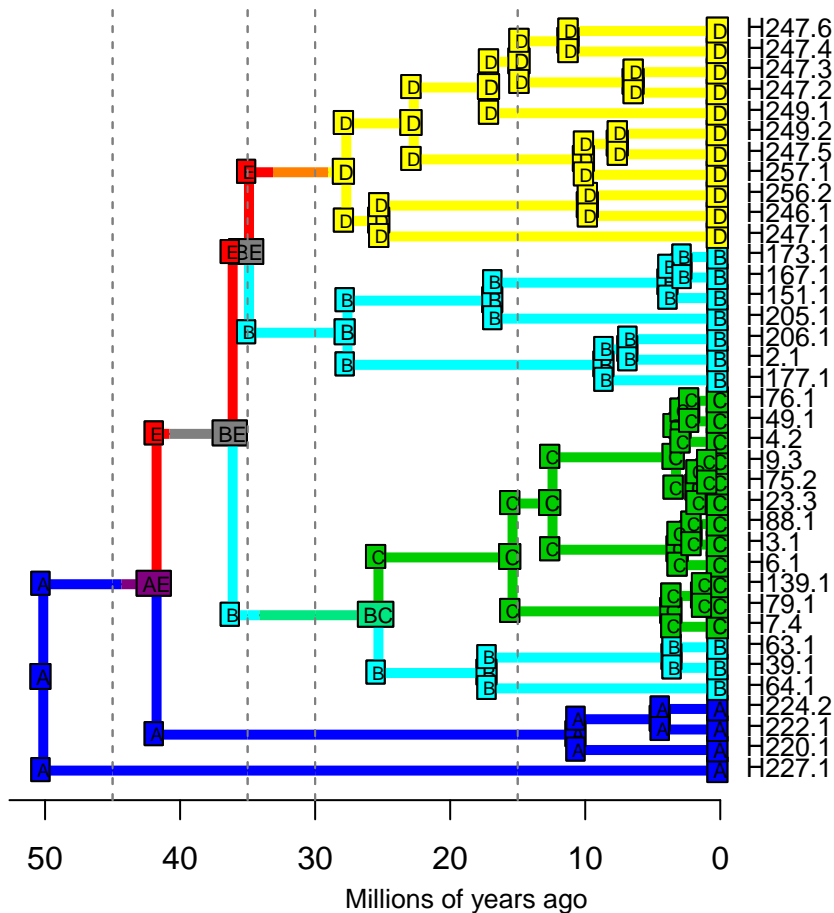


DIVALIKE – Stochastic Map #37/50

ancstates: global optim, 2 areas max. d=1.0875; e=0.0024; j=0; LnL=-23.43

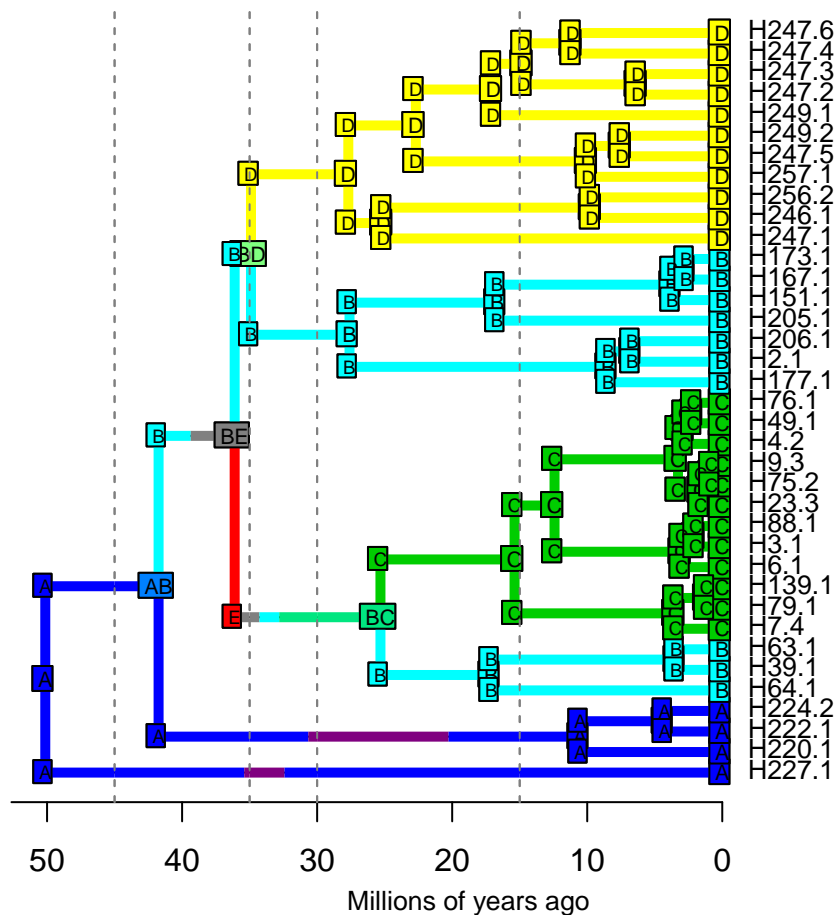


ancstates: global optim, 2 areas max. d=1.0875; e=0.0024; j=0; LnL=-23.43



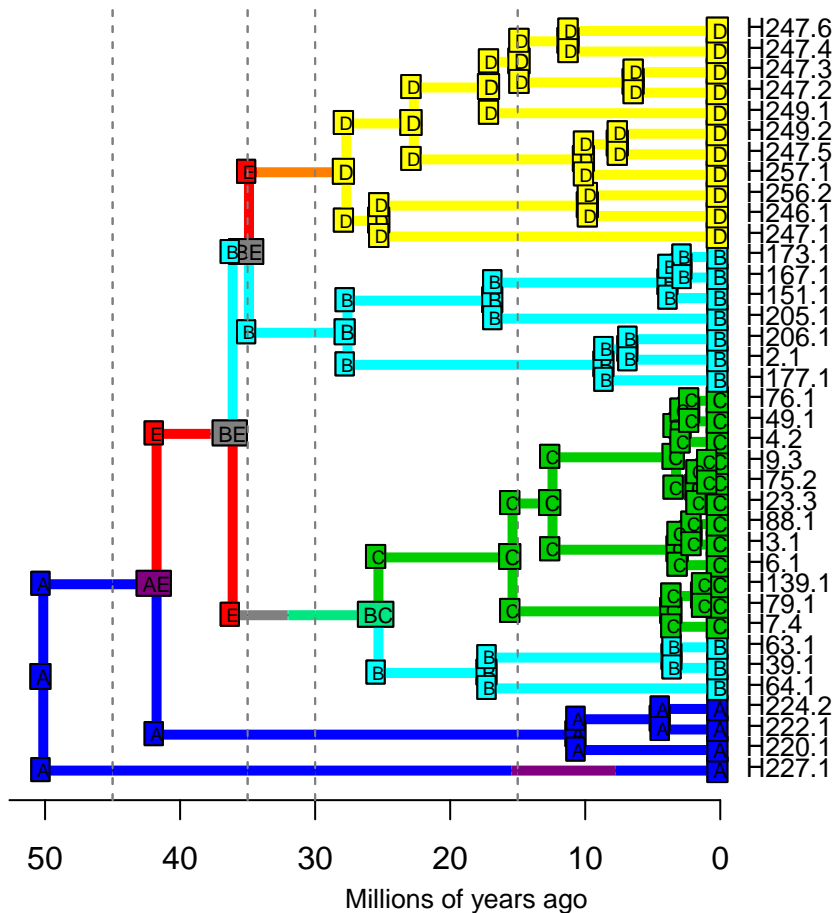
DIVALIKE – Stochastic Map #39/50

ancstates: global optim, 2 areas max. d=1.0875; e=0.0024; j=0; LnL=-23.43



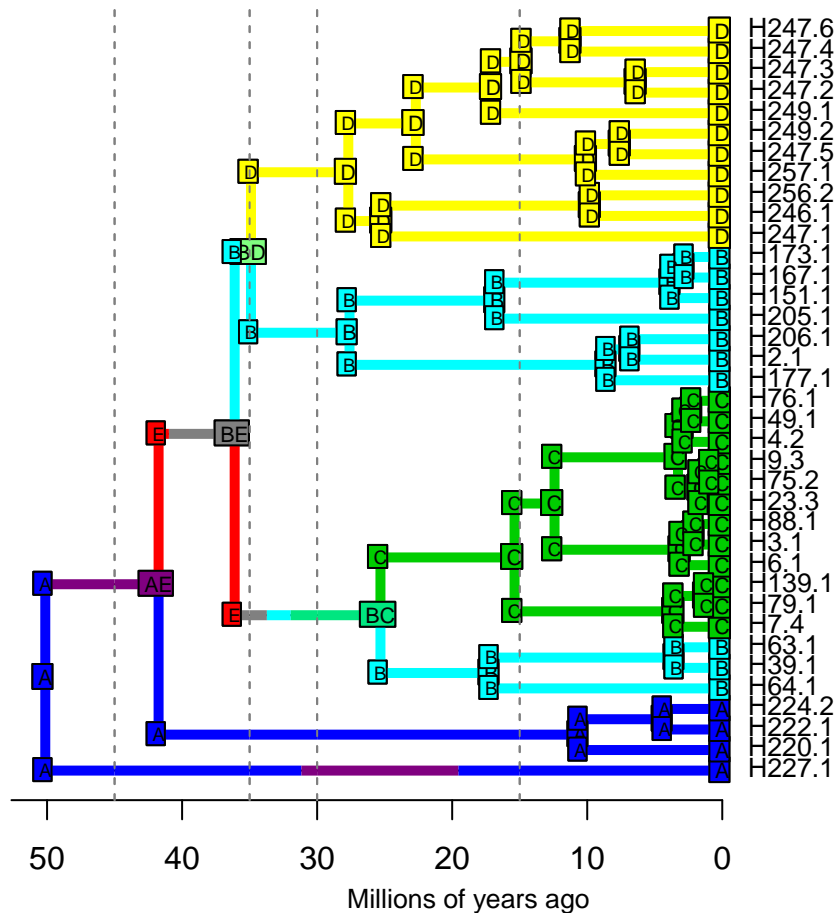
DIVALIKE – Stochastic Map #40/50

ancstates: global optim, 2 areas max. d=1.0875; e=0.0024; j=0; LnL=-23.43



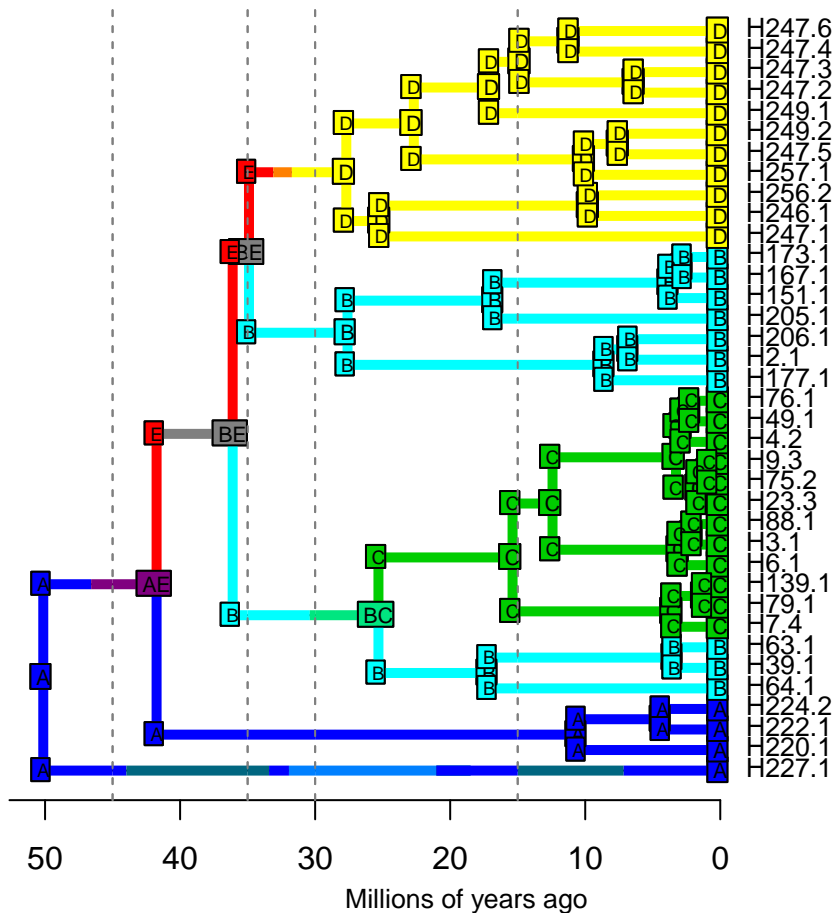
DIVALIKE – Stochastic Map #41/50

ancstates: global optim, 2 areas max. d=1.0875; e=0.0024; j=0; LnL=-23.43

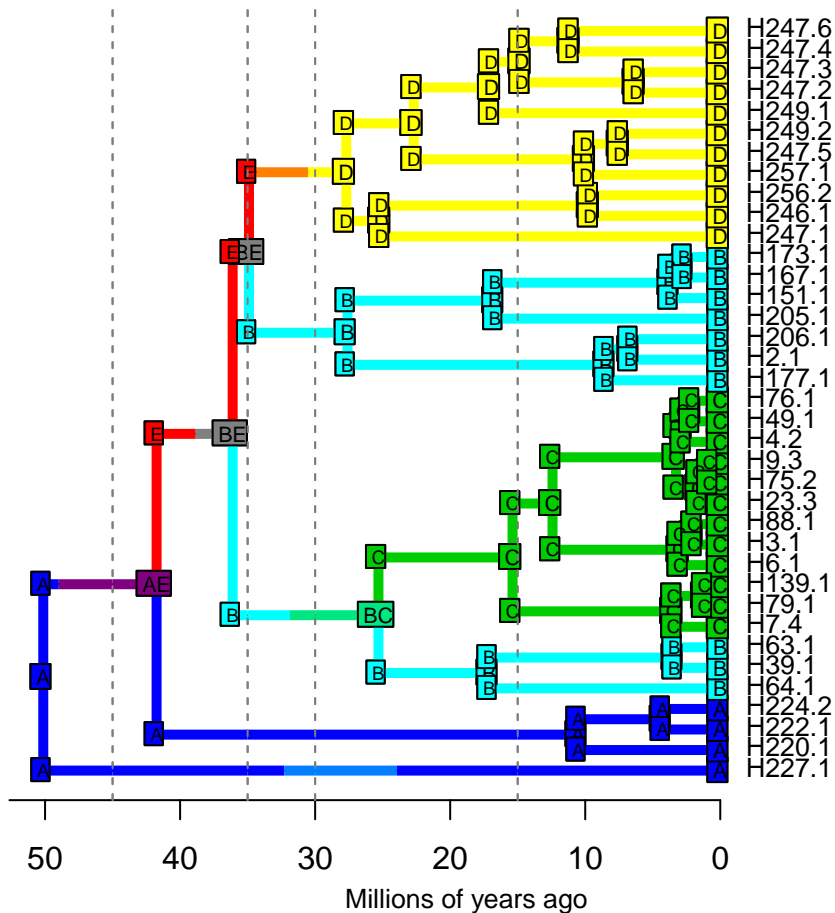


DIVALIKE – Stochastic Map #42/50

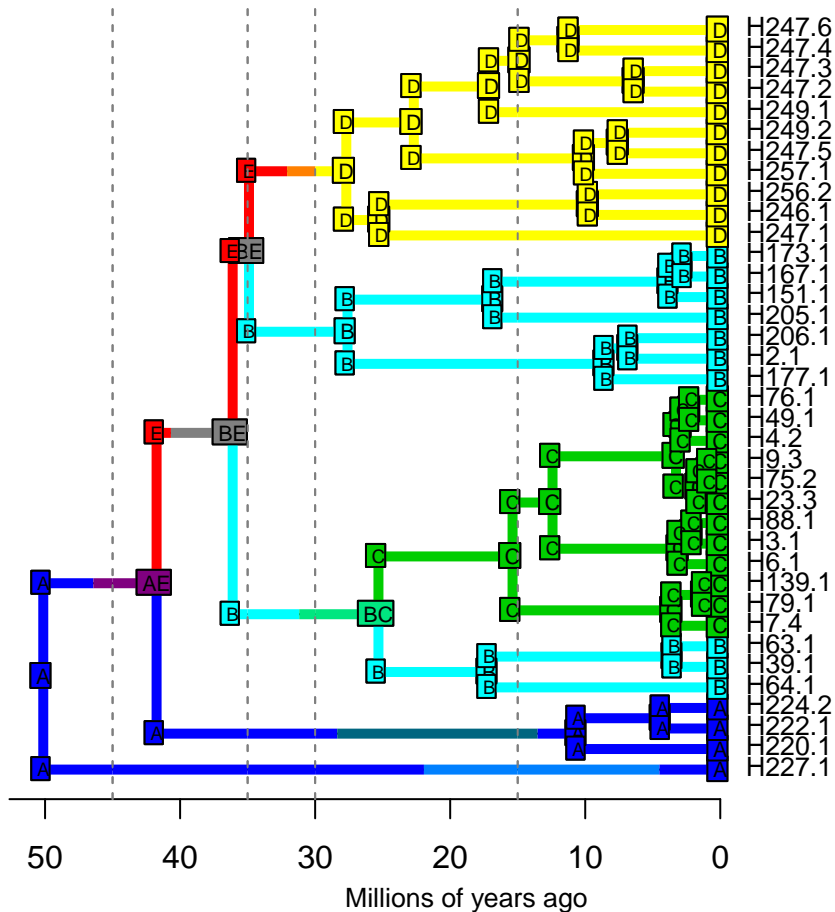
ancstates: global optim, 2 areas max. d=1.0875; e=0.0024; j=0; LnL=-23.43



ancstates: global optim, 2 areas max. d=1.0875; e=0.0024; j=0; LnL=-23.43

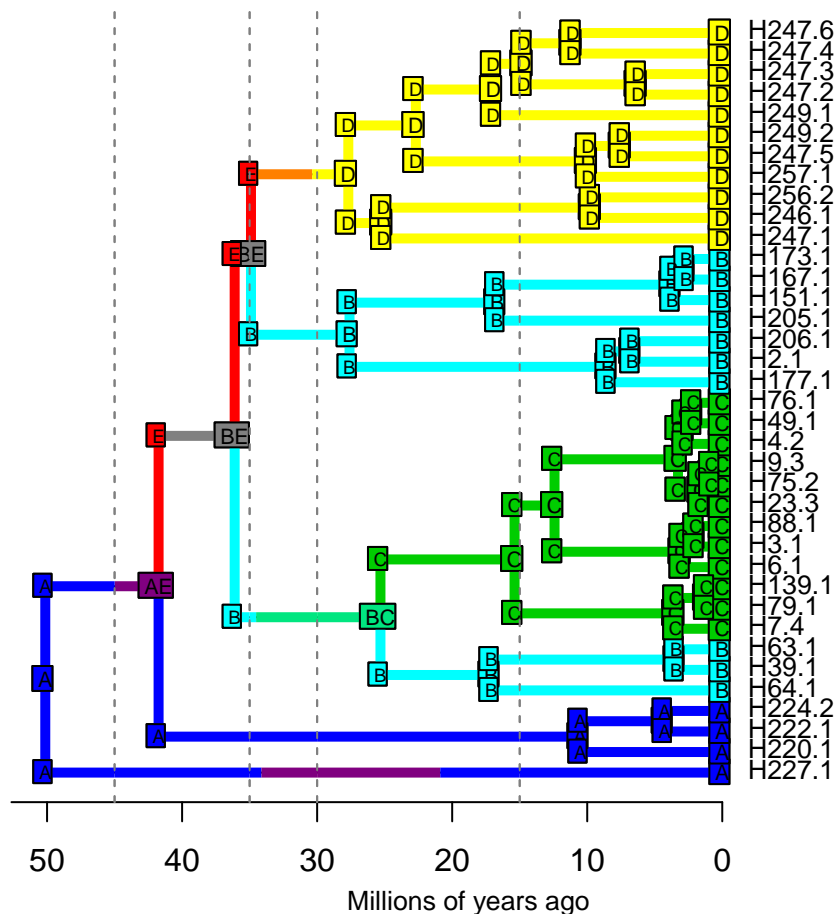


ancstates: global optim, 2 areas max. d=1.0875; e=0.0024; j=0; LnL=-23.43



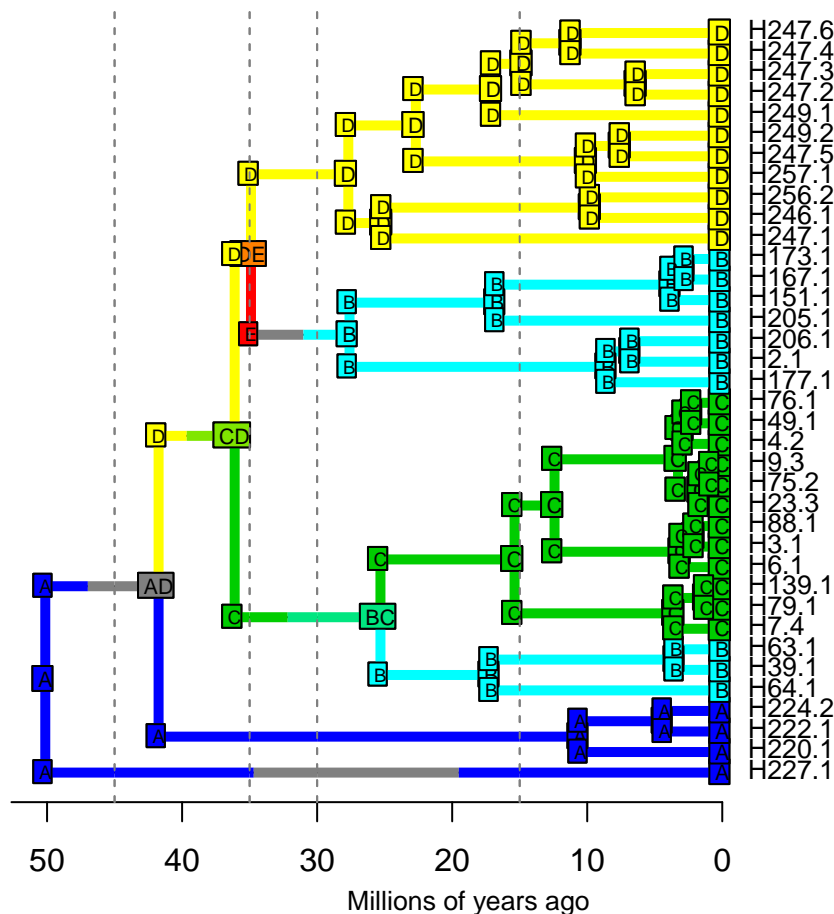
DIVALIKE – Stochastic Map #45/50

ancstates: global optim, 2 areas max. d=1.0875; e=0.0024; j=0; LnL=-23.43



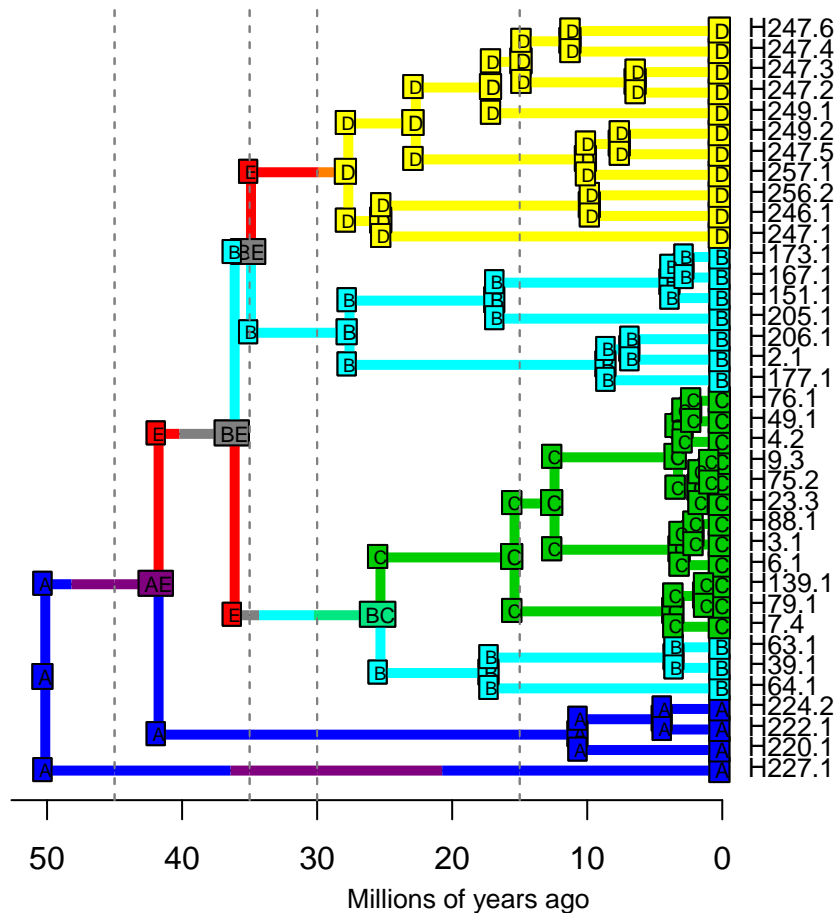
DIVALIKE – Stochastic Map #46/50

ancstates: global optim, 2 areas max. d=1.0875; e=0.0024; j=0; LnL=-23.43



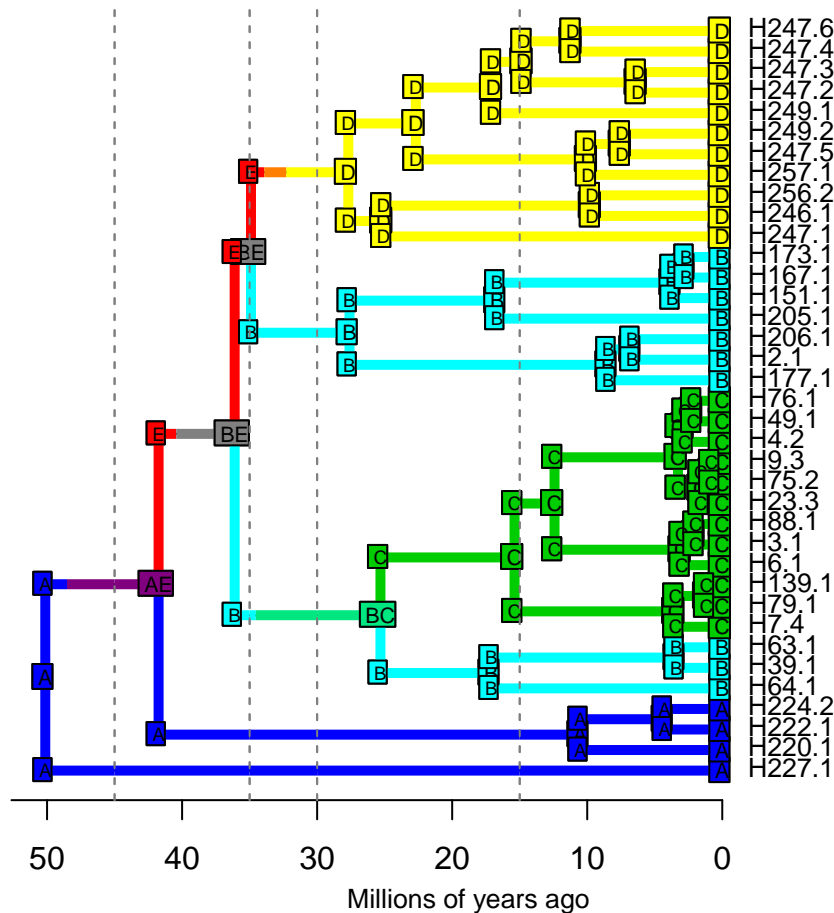
DIVALIKE – Stochastic Map #47/50

ancstates: global optim, 2 areas max. d=1.0875; e=0.0024; j=0; LnL=-23.43



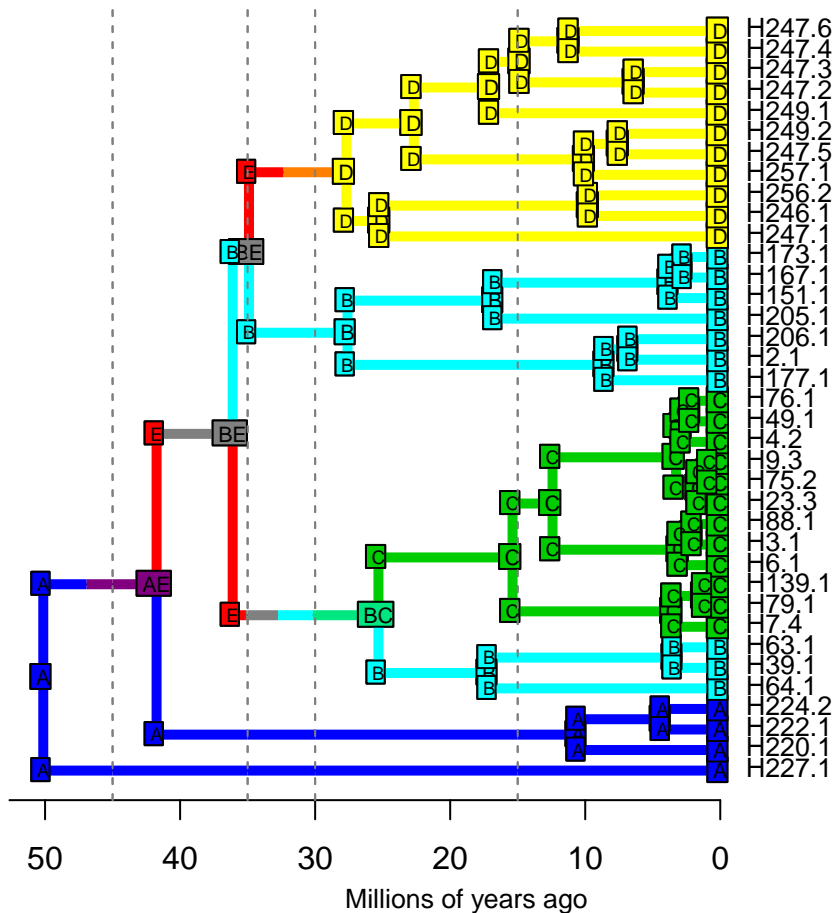
DIVALIKE – Stochastic Map #48/50

ancstates: global optim, 2 areas max. d=1.0875; e=0.0024; j=0; LnL=-23.43



DIVALIKE – Stochastic Map #49/50

ancstates: global optim, 2 areas max. d=1.0875; e=0.0024; j=0; LnL=-23.43



DIVALIKE – Stochastic Map #50/50

ancstates: global optim, 2 areas max. d=1.0875; e=0.0024; j=0; LnL=-23.43

