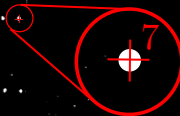
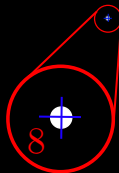


3

1



2

instructions

Click on a calibration point, enter its lab coordinates in the textboxes, and click Mark point. Repeat this for all the relevant points, and click Save once finished to generate a text file with points.

Zoom in/out with +/-

Shift-arrowkeys move the cursors in small increments.

x image: 991

4

y image: 335

x lab: 0.0

y lab: 0.0

z lab: 0.0

5

(1234, 72)

Mark point

Forget last point

Save points

Quit

6