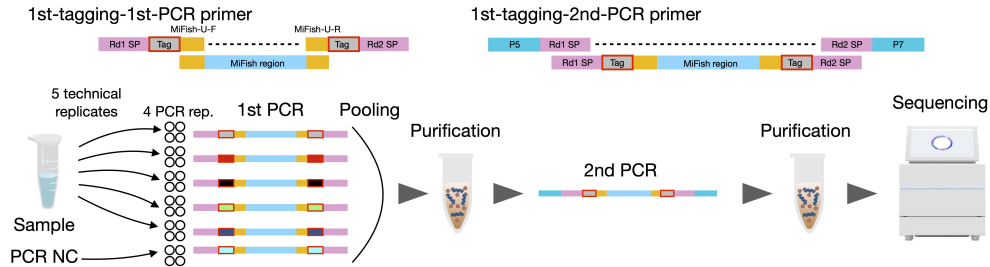
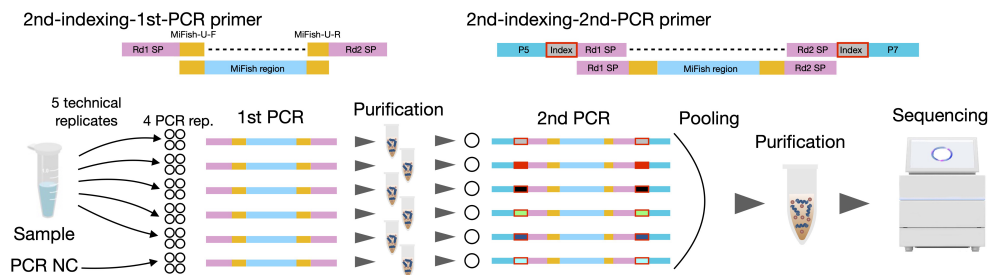


## a Experiment I: Tagging/indexing method test

### 1st PCR tagging protocol

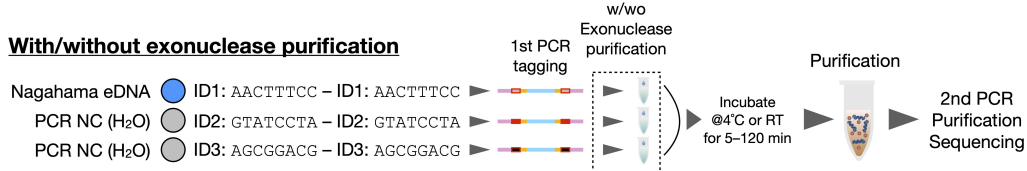


### 2nd PCR indexing protocol



## b Experiment II: Tag-jumping test

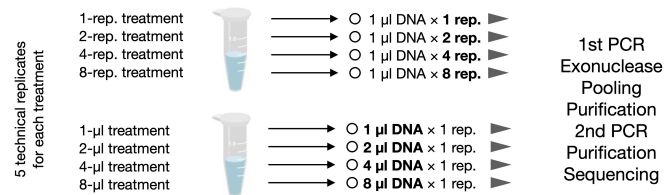
### With/without exonuclease purification



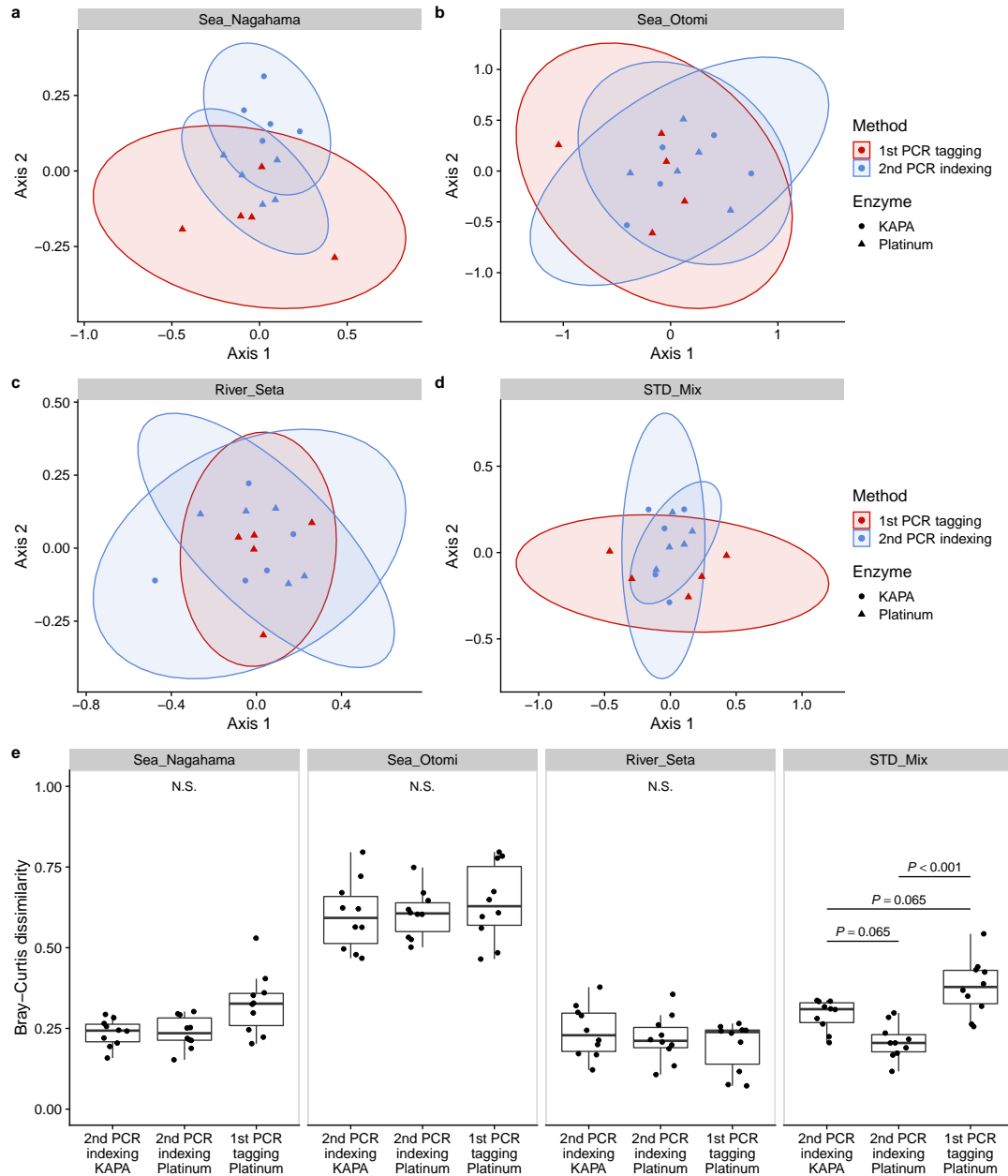
## c Experiment III: The number of replicates and template volume test

### Replicate test

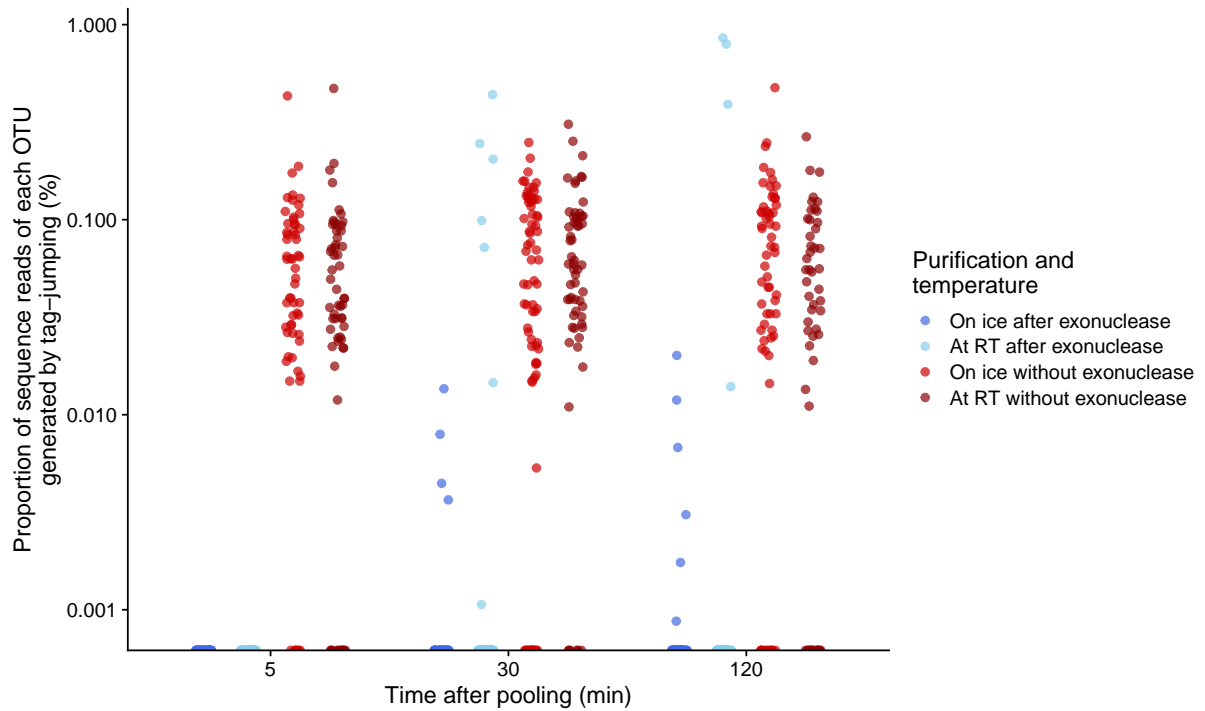
### Volume test



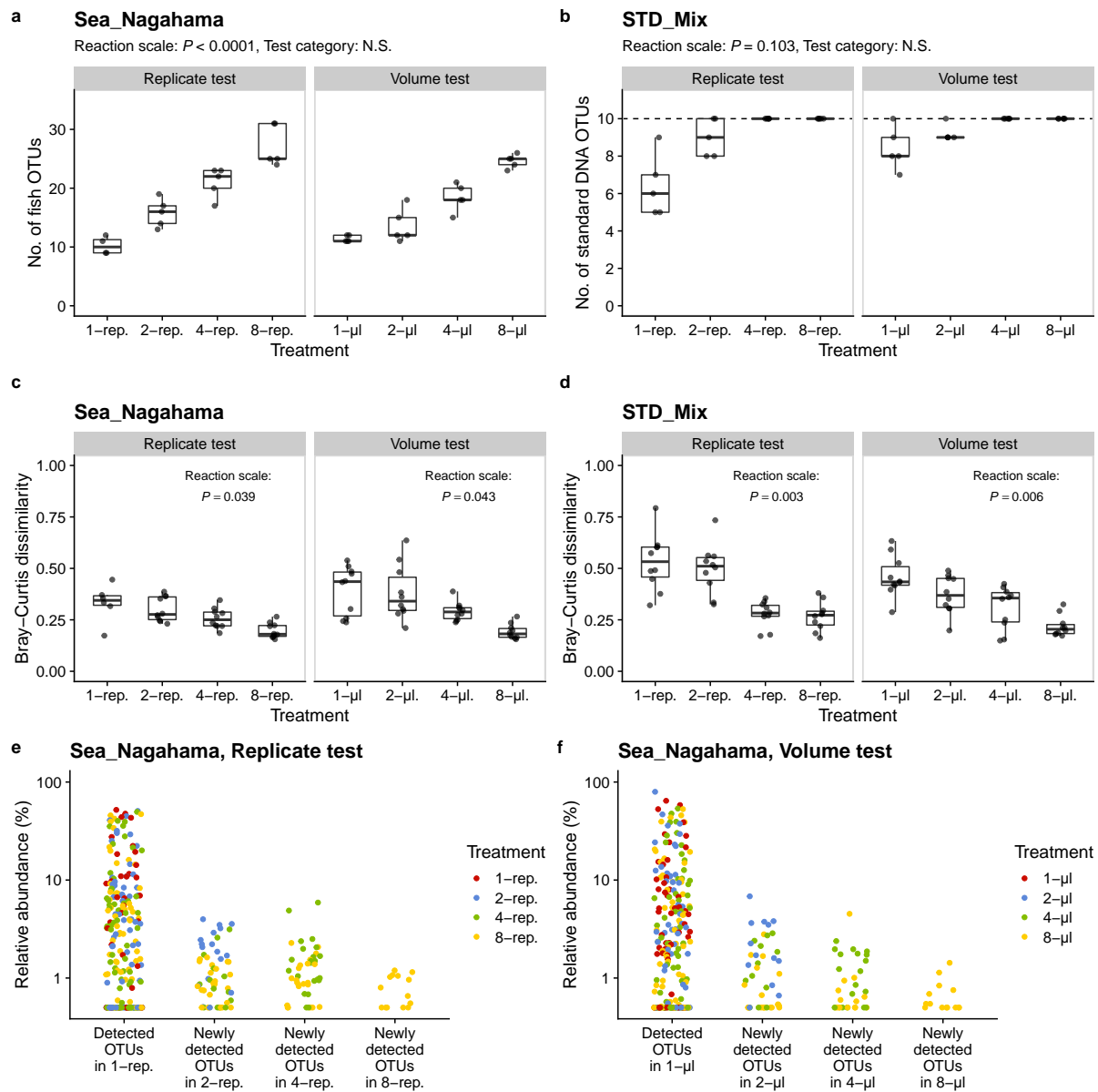
**Figure 1. Experimental designs of this study.** (a) Experiment I. The effects of the tagging/indexing method were examined. The 1st PCR-tagging protocol appends sample-specific sequences in the 1st PCR using “1st tagging-1st PCR primers”, while the 2nd PCR-indexing protocol appends index sequences in the 2nd PCR using “2nd indexing-2nd PCR primers.” “Purification” indicates magnetic bead purification in Experiment I. (b) Experiment II. The effects of exonuclease purification on tag-jumping events were examined. Exonuclease purification was performed for each sample. Then samples were combined and incubated to test the effects of incubation time and temperature. (c) Experiment III. The effects of the 1st PCR replicates and template DNA volume were tested. Other processes were identical with that of Experiment II with exonuclease purification.



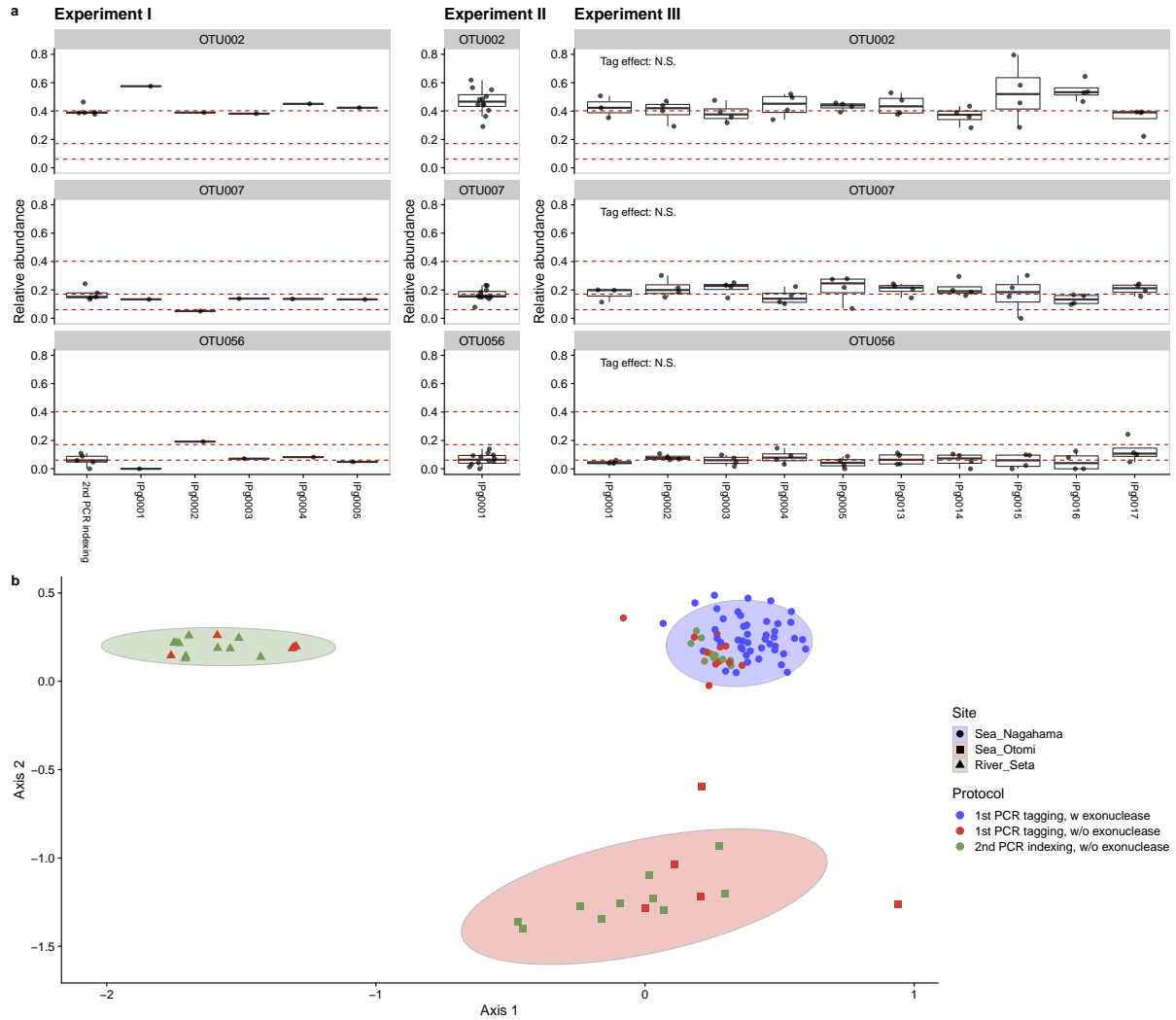
**Figure 2. Nonmetric dimensional scaling (NMDS) and Bray-Curtis dissimilarities of fish eDNA composition detected in Experiment I.** Fish eDNA compositions of (a; Sea\_Nagahama) seawater samples collected in Nagahama, Kyoto, Japan, (b; Sea\_Otomi) seawater samples collected in Otoumi, Fukui, Japan, (c; River\_Seta) freshwater samples collected in Seta River, Otsu, Japan, and (d; STD\_Mix) a mixture of 10 standard fish DNAs. Filled circles and triangles indicate that KAPA HiFi HotStart ReadyMix and Platinum SuperFi II PCR Master Mix was used for PCR, respectively. Red and blue circles indicate that sample-specific sequences were appended by the 1st PCR-tagging method and the 2nd PCR-indexing method, respectively. (e) Each panel represents eDNA samples collected in one study site. Points in each panel represent Bray-Curtis dissimilarities of fish eDNA compositions between two eDNA samples. The thick bar indicates the median value of the Bray-Curtis dissimilarities in each treatment. Statistical clarity was tested by bootstrap test (see Methods).



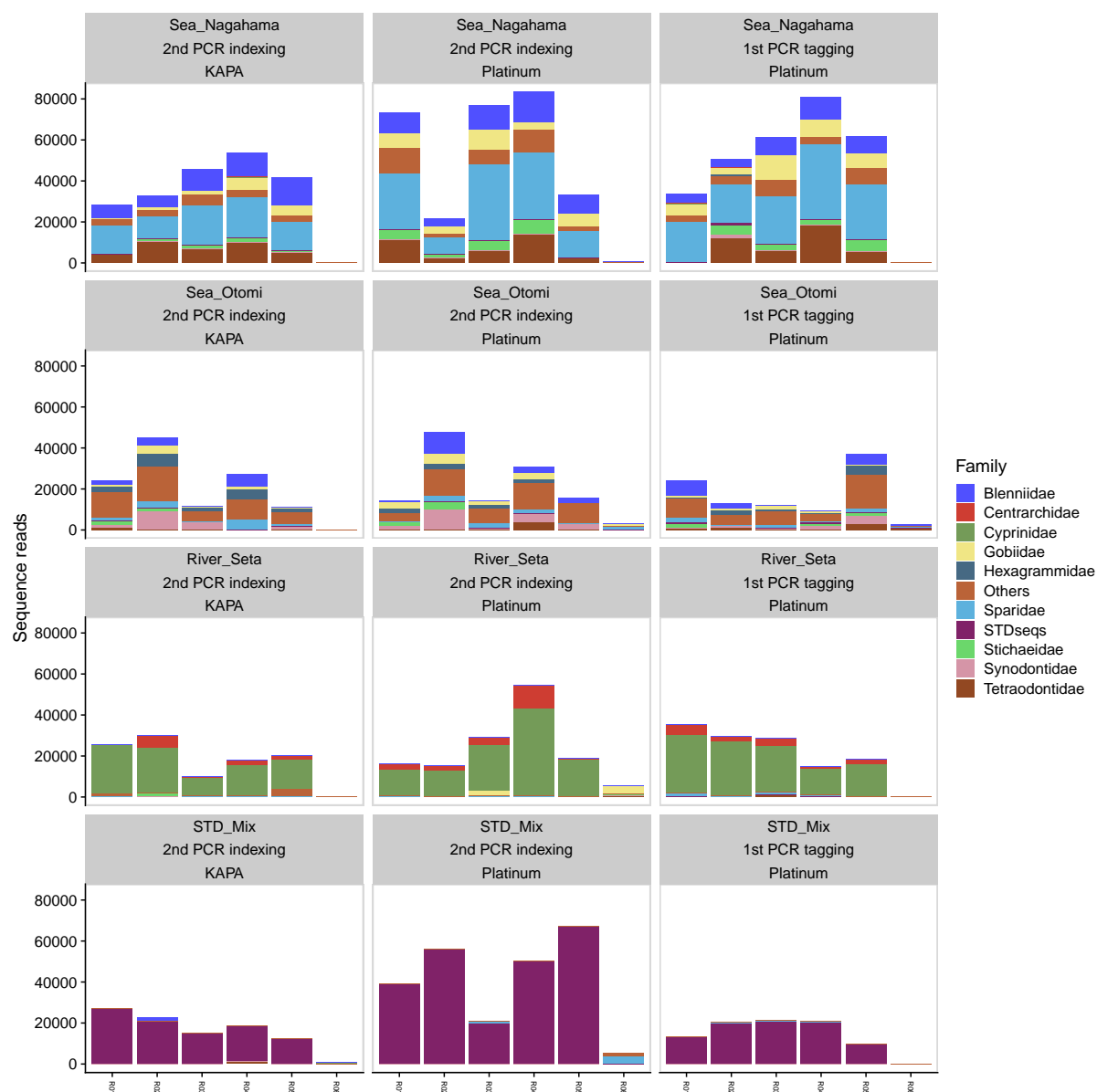
**Figure 3. Estimation of the tag-jumping probability of each library preparation method.** The *y*-axis indicates the proportion of sequence reads for each OTU generated by tag jumping. We used three tag combinations in Experiment II, i.e., ID1\_F (AACTTTCC)-ID1\_R (AACTTTCC) (positive sample), ID2\_F (GTATCCTA)-ID2\_R (GTATCCTA) (H<sub>2</sub>O), and ID3\_F (AGCGGACG)-ID3\_R (AGCGGACG) (H<sub>2</sub>O). Tag jumping is defined as the occurrence of any of the four “unused” tag combinations in this study: ID1\_F-ID2\_R, ID1\_F-ID3\_R, ID2\_F-ID1\_R, and ID3\_F-ID1\_R. We ignored the other possible combinations as described in the main text. Each point represents the tag-jumped sequence reads for each OTU divided by the sequence reads of the corresponding OTU detected in the positive sample. Blue and light blue points indicate that exonuclease-purified 1st PCR products were pooled and incubated on ice and at room temperature (22°C), respectively. Red and dark red points indicate not-purified 1st PCR products were pooled and incubated on ice and at room temperature (22°C), respectively.



**Figure 4. Effects of the number of replicates and the volume of template DNA in the 1st PCR reaction on community compositions and OTU richness.** (a, b) Effects of the number of replicates and the template DNA volume on the number of fish OTUs in the Nagahama samples (a; Sea\_Nagahama) and standard DNA samples (b; STD\_Mix). In b, Dashed horizontal line indicates the number of standard DNAs included in the reactions. Statistical clarity was tested by GLM. (c, d) Effects of the number of replicates and the template DNA volume on Bray-Curtis dissimilarities in the Nagahama samples (c) and standard DNA samples (d). Statistical clarity was tested by the bootstrap analysis. (e, f) The relationship between the relative abundance of OTUs and detected treatments. In e, each point indicates that each OTU is newly detected in the replication treatment described on x-axis. Points at “Detected OTUs in 1-rep.” indicate all OTUs detected in the 1-rep. treatment. Colors indicate the treatment in which OTUs are detected. (f) Results for the volume test of the Nagahama samples.

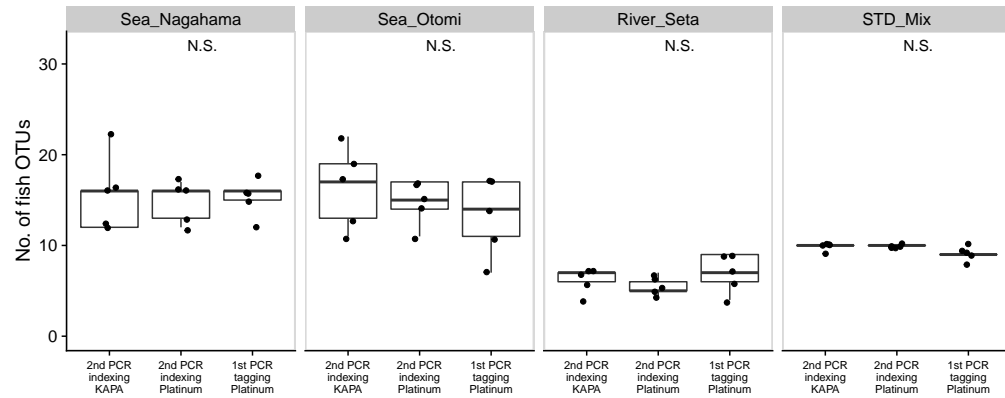


**Figure 5. Effects of tag sequences and protocols on the relative abundance and community compositions of fish detected in the Nagahama samples.** (a) The *y*-axis shows the relative abundance of the three most dominant OTUs. The *x*-axis shows the library preparation method (= “2nd PCR indexing”) or the names of the tag sequences used in the 1st PCR. Red dashed horizontal lines indicate the mean relative abundance of each OTU detected by the 2nd PCR indexing method. In Experiment I, only one library was sequenced using each tag. In Experiments II and III, multiple libraries were sequenced using the same tag. Note that different experimental treatments (e.g., incubation time and temperature in Experiment II) are grouped in this figure. In Experiment III, statistical clarity was tested by GLM. (b) The effects of library preparation protocols on the fish community compositions of three study sites visualized by Nonmetric dimensional scaling (NMDS). All Nagahama samples are clearly distinguished from natural eDNA samples from the other study sites. Symbols and colors indicate the library preparation protocols and study sites, respectively. Ellipses indicate 95% confidential intervals for each study site. An NMDS plot with more detailed sample information is shown in Figure S5b.

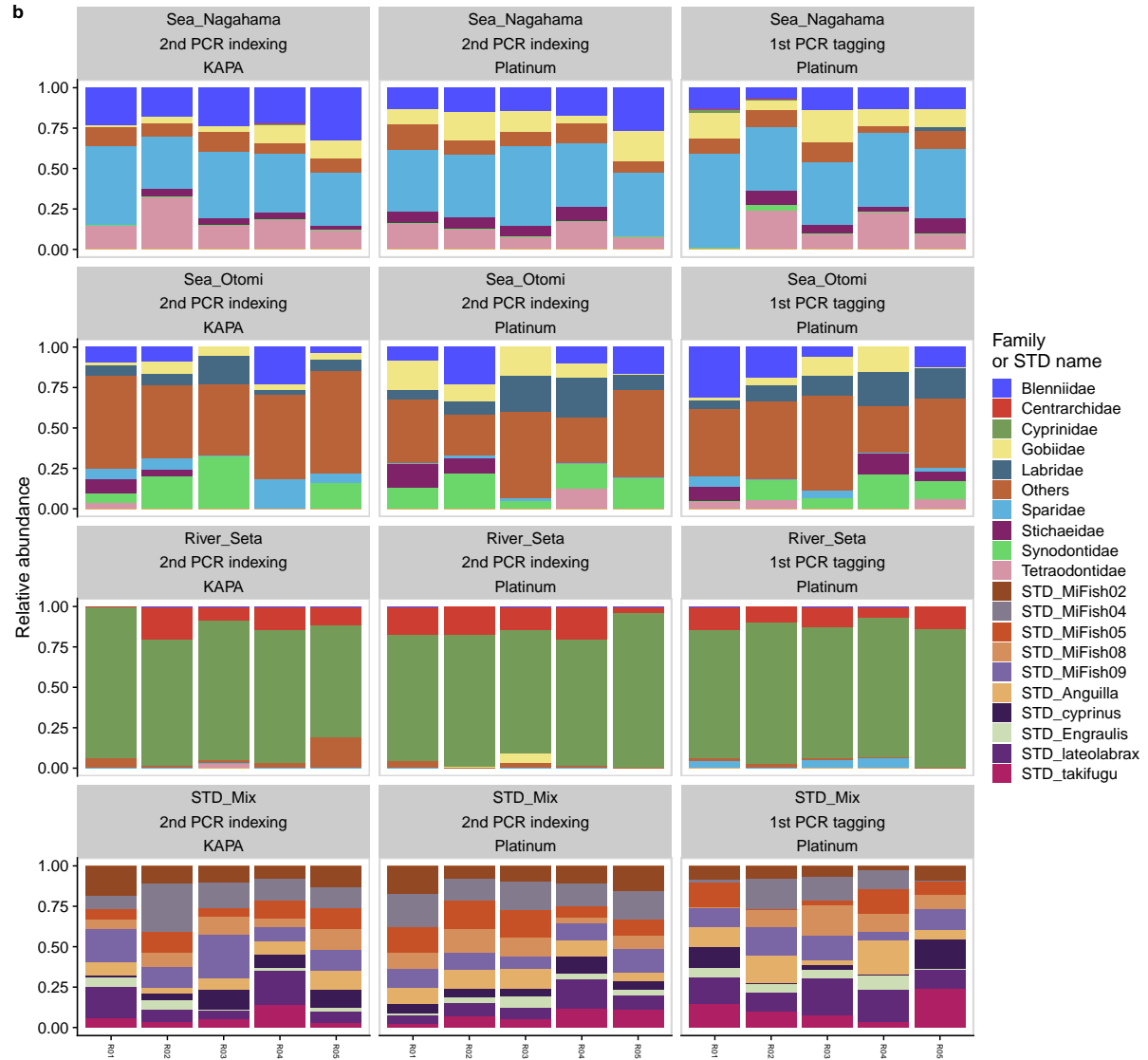


**Figure S1. Sequence reads generated in Experiment I (not normalized).** Each panel shows sequence reads for 5 positive samples (R01-R05) and 1 negative sample (R06; H<sub>2</sub>O). Colors indicate fish family assigned by Claident, or the standard fish DNAs.

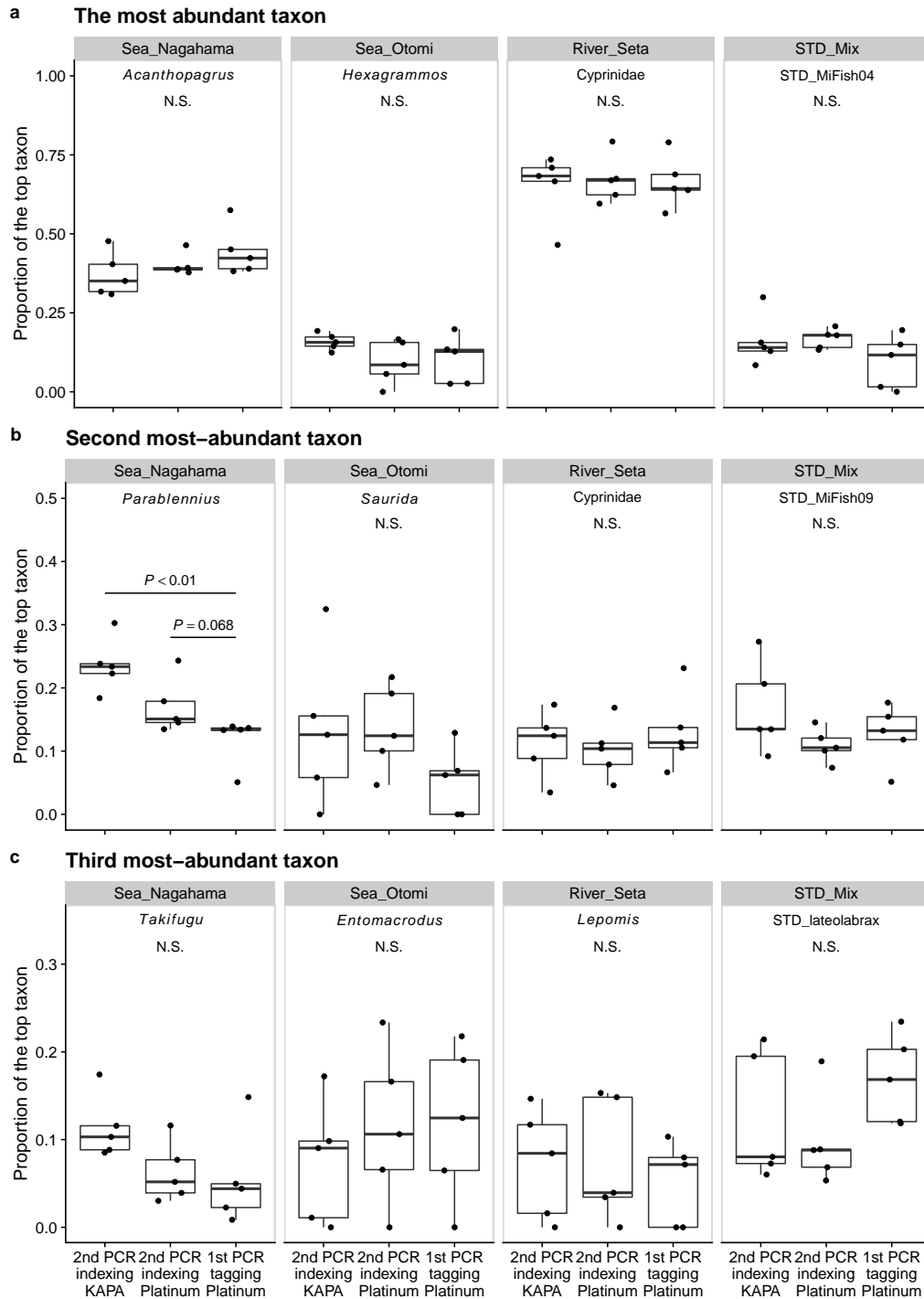
**a**



**b**

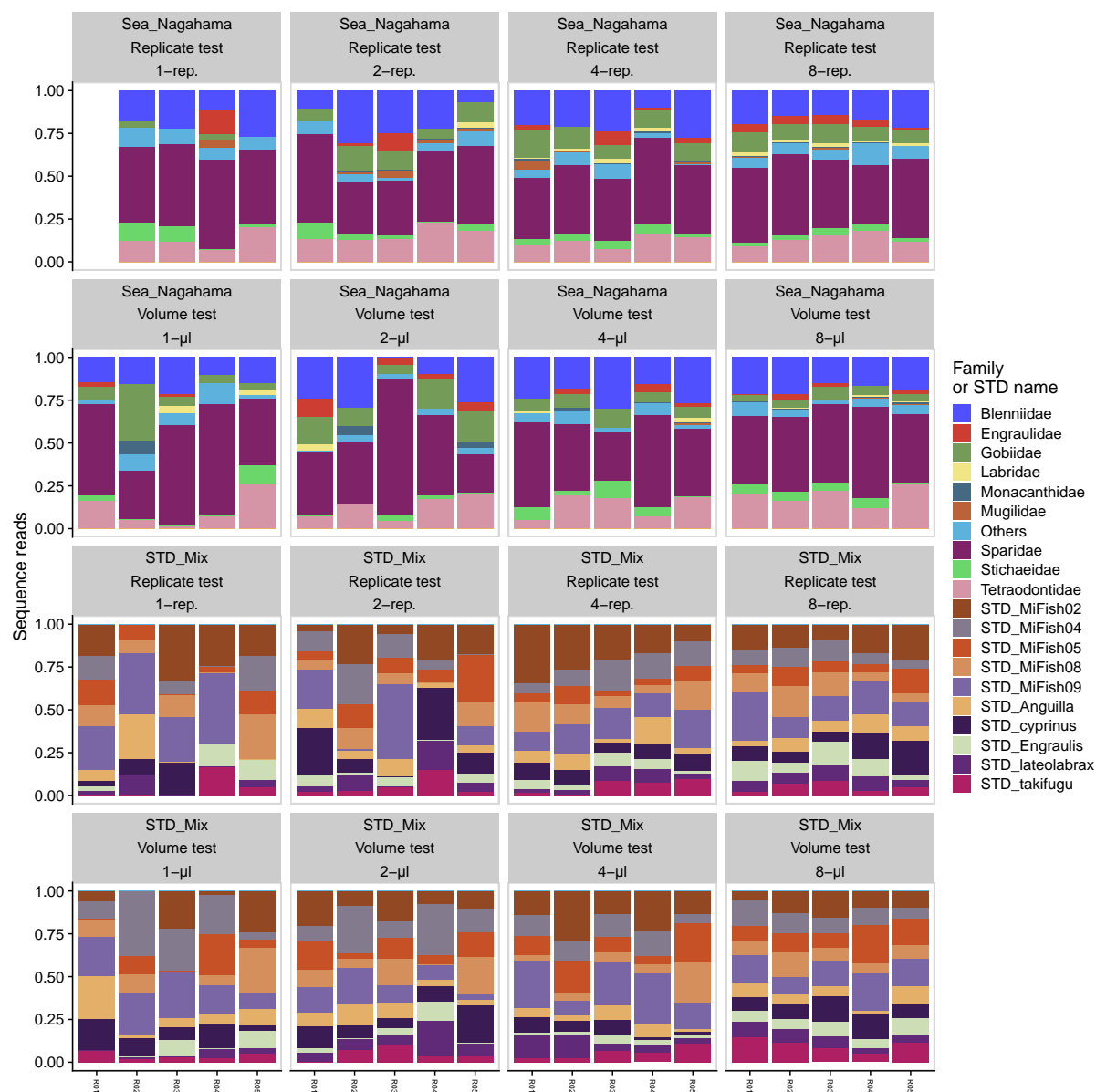


**Figure S2. Relative abundance and the number of OTUs detected in Experiment I.** (a) The number of OTUs detected in each treatment. *x*-axis indicates experimental protocols (i.e., the 1st or 2nd PCR indexing protocol and KAPA HiFi HostStart ReadyMix or Platinum SuperFi II PCR Master Mix). (b) Relative abundance of OTUs detected in each treatment. *x*-axis indicates replicates in the treatment. Colors indicate fish family assigned by C1aident, or the standard fish DNAs.

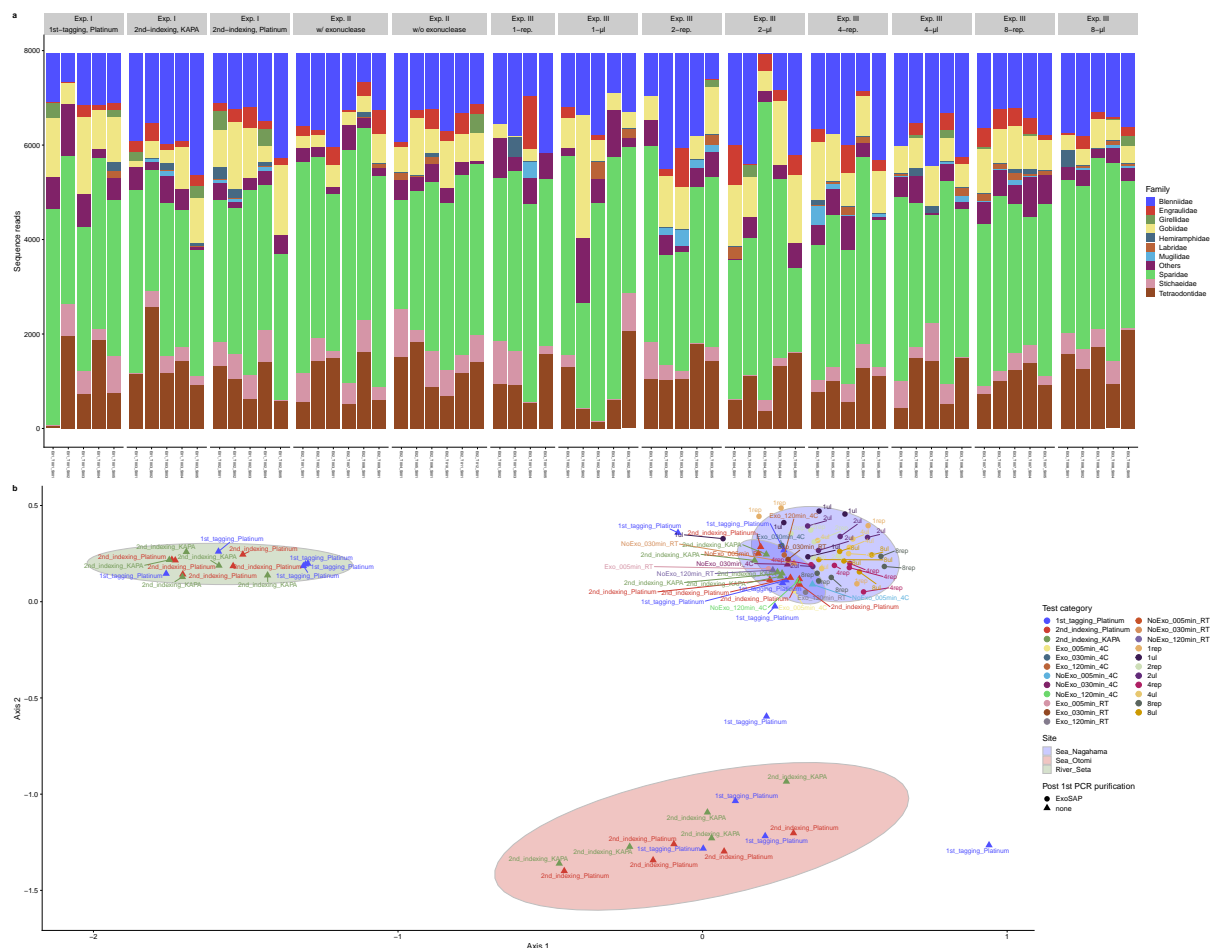


**Figure S3. Effects of the library preparation methods on the detected relative abundance of the three most-dominant OTUs.** Results for (a) the most-dominant OTUs, (b) the second-most-dominant OTUs, and (c) the third-most-dominant OTUs. Note that the taxon that each OTU represents is different depending on the study site. Taxon name assigned to each OTU is shown at the top of each panel. Statistical clarity was tested by GLM that assumed normal distributions of the sequence reads (see Methods).





**Figure S4. Relative abundance of sequence reads detected in Experiment III.** Each panel indicates 5 replicates for each treatment. Note that R01 in 1-rep. treatment in the replication test was removed because only 304 reads were assigned to the sample. Colors indicate fish family assigned by Claident, or the standard fish DNAs.



**Figure S5. Effects of library preparation protocols on the community composition of fish eDNA detected in the Nagahama samples.** (a) Relative abundance of sequence reads detected in the Nagahama samples. Each panel shows the indicated experimental treatment, and colors indicate fish family. (b) Nonmetric dimensional scaling (NMDS) of all natural eDNA samples analyzed in the present study. Various library preparation methods were tested for the Nagahama samples, and all Nagahama samples were clearly distinguished from natural eDNA samples from the other study sites. Symbols and colors indicate the purification protocol after the 1st PCR and experimental treatments, respectively. Ellipses indicate 95% confidential intervals for each study site and purification protocol.