

Pholcidae eggs, supplementary data

Contents

Aetana Huber, 2005	3
Anansus Huber, 2007	10
Anopsicus Chamberlin & Ivie, 1938	10
Apokayana Huber, 2018	15
Arenita Huber & Carvalho, 2019	17
Arnapa Huber, 2019	17
Artema Walckenaer, 1837	18
Aymaria Huber, 2000	22
Belisana Thorell, 1898	23
Blancoa Huber, 2000	52
Buitinga Huber, 2003	53
Calapnita Simon, 1892	55
Canaima Huber, 2000	60
Cantikus Huber, 2018	63
Carapoia González-Sponga, 1998	68
Cenemus Saaristo, 2001	92
Chibchea Huber, 2000	92
Chisosa Huber, 2000	98
Ciboneya Pérez, 2001	99
Coryssocnemis Simon, 1893	101
Crossopriza Simon, 1893	102
Galapa Huber, 2000	107
Gen.n.B	108
Gen.n.C	110
Gertschiola Brignoli, 1981	111
Guaranita Huber, 2000	114
Holocneminus Berland, 1942	119
Holocnemus Simon, 1873	124
Hoplopholcus Kulczyński, 1908	125
Ibotyporanga Mello-Leitão, 1944	129
Kairona Huber & Carvalho, 2019	130
Kambiwa Huber, 2000	131
Kelabita Huber, 2018	131
Kintaga Huber, 2018	132
Leptopholcus Simon, 1893	134
Litoporus Simon, 1893	138
Mecolaesthus Simon, 1893	146
Meraha Huber, 2018	153
Mesabolivar González-Sponga, 1998	155
Metagonia Simon, 1893	180
Micromerys Bradley, 1877	219
Micropholcus Deeleman-Reinhold & Prinsen, 1987	220
Modisimus Simon, 1893	226
Muruta Huber, 2018	258
Nerudia Huber, 2000	260
Ninetis Simon, 1890	267
Nipisa Huber, 2018	269
Nyikoa Huber, 2007	274
Otavaloa Huber, 2000	275
Paiwana Huber, 2018	275
Panjange Deeleman-Reinhold & Deeleman, 1983	276
Pholcophora Banks, 1896	280
Pholcus Walckenaer, 1805	283
Physocyclus Simon, 1893	304
Pinocchio Huber & Carvalho, 2019	307
Pisaboa Huber, 2000	308
Pribumia Huber, 2018	310

Priscula Simon, 1893	312
Psilochorus Simon, 1893.....	318
Saciperere Huber & Carvalho, 2019	327
Savarna Huber, 2005.....	329
Smeringopina Kraus, 1957.....	332
Smeringopus Simon, 1890	341
Spermophora Hentz, 1841.....	347
Stenosfemuraia González-Sponga, 1998.....	355
Stygopholcus Kratochvil, 1932	356
Systemita Simon, 1893.....	356
Teranga Huber, 2018.....	357
Tissahamia Huber, 2018.....	359
Tolteca Huber, 2000.....	363
Tupigea Huber, 2000.....	366
Uthina Simon, 1893	370
Wanniyala Huber & Benjamin, 2005.....	373

***Aetana* Huber, 2005**



Aetana abadae Huber, 2015. IMG_2479 Twin Lakes NP
PHILIPPINES: Negros Isl., Negros Oriental Prov., Twin Lakes N.P. (9.368-9.365°N, 123.181-123.182°E),
850-950 m a.s.l., forest above Balianasayao Crater Lake



Aetana indah Huber, 2015. IMG_3544 Crocker
MALAYSIA-BORNEO: *Sabah*: Crocker Range between Kota Kinabalu and Tambuan, S-slope, forest
along river (5.783°N, 116.338-116.340°E), 1430-1480 m a.s.l.



Aetana kinabalu Huber, 2005. IMG_3281 Mulu
MALAYSIA-BORNEO: Sarawak: Gunung Mulu N.P., forest near Deer Cave (4.027°N, 114.818°E), 60 m a.s.l.



Aetana kinabalu Huber, 2005. IMG_3606 Crocker
MALAYSIA-BORNEO: Sabah: Crocker Range between Kota Kinabalu and Tambunan, S-slope, forest along river (5.783°N, 116.338-116.340°E), 1430-1480 m a.s.l.



Aetana kiukoki Huber, 2015. IMG_1248 Sto Domingo
PHILIPPINES: Mindanao, Bukidnon Prov., Santo Domingo (7.782°N, 125.397°E), 560 m a.s.l.



Aetana kiukoki Huber, 2015. IMG_1365 Sto Domingo
PHILIPPINES: Mindanao, Bukidnon Prov., Santo Domingo (7.782°N, 125.397°E), 560 m a.s.l.



Aetana kiukoki Huber, 2015. IMG_1591 Marilog
PHILIPPINES: Mindanao, Davao del Sur Prov., Marilog Distr., Epol Spring Resort (7.456°N, 125.237°E), ~1100 m a.s.l.



Aetana lambir Huber, 2015. IMG_3153 Lambir
MALAYSIA-BORNEO: Sarawak: Lambir Hills N.P. (4.198-4.207°N, 114.034-114.045°E), 60-150 m a.s.l.



Aetana loboc Huber, 2015. IMG_2385 Loboc River
PHILIPPINES: Bohol Isl., near Loboc, above Loboc River (~9.655°N, 124.015°E), ~250 m a.s.l.



Aetana lozadae Huber, 2015. IMG_2007 Mt Isarog
PHILIPPINES: Luzon, Camarines Sur Prov., Mt. Isarog, W slope (13.664°N, 123.34-123.35°E), ~600-900 m a.s.l.



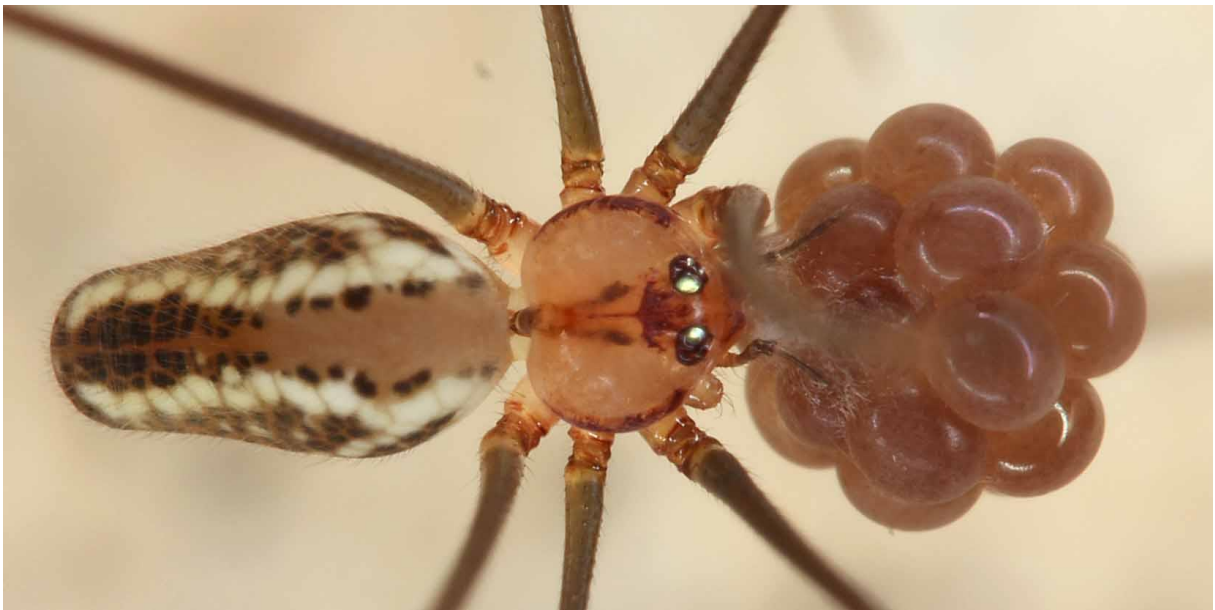
Aetana lozadae Huber, 2015. IMG_2046 Mt Isarog
 PHILIPPINES: Luzon, Camarines Sur Prov., Mt. Isarog, W slope (13.664°N, 123.34-123.35°E), ~600-900 m a.s.l.



Aetana manansalai Huber, 2015. IMG_2199 Banahaw or Lucban-Tayabas
 PHILIPPINES: Luzon, Quezon Prov., between Lucban and Tayabas (14.063°N, 121.567°E), 330 m a.s.l.



Aetana omayan Huber, 2005. IMG_2318 Crystal Cave
PHILIPPINES: Luzon, Benguet Prov., Baguio, Crystal Cave (16.396°N, 120.572°E), 1360 m a.s.l.



Aetana ondawamei Huber, 2019. IMG_9512 Manokwari
INDONESIA: West Papua, Manokwari, Gunung Meja (0.860°S, 134.084°E), 190 m a.s.l.

***Anansus* Huber, 2007**

Anansus atewa Huber & Kwapong, 2013. DSCF1157-Kakum
GHANA: *Central Region*: Kakum National Park (5.3484°N, -1.3835°W), 160 m a.s.l.

***Anopsicus* Chamberlin & Ivie, 1938**

Anopsicus ana Huber, 2020. IMG_6419 Cueva del Guano
VENEZUELA: *Falcón*: Península de Paraguaná, Cueva del Guano (11.9000°N, 69.9479°W), 140 m a.s.l.



Anopsicus ana Huber, 2020. IMG_6579 Cerro Santa Ana
VENEZUELA: *Falcón*: Península de Paraguaná, Cerro Santa Ana (11.8141°N, 69.9478°W), 380 m a.s.l.



Anopsicus boneti Gertsch, 1982(?). IMG_0152 6km S Coquimatlán
MEXICO: *Colima*, ~6 km S Coquimatlán (19.1521°N, 103.8350°W), 280 m a.s.l., low forest near 'Cueva sin Nombre'



Anopsicus malkini Gertsch, 1982(?). IMG_0342 8km NE San Blas
MEXICO: Nayarit, ~8 km NE San Blas (21.5855°N, 105.2193°W), 110 m a.s.l.



Anopsicus sp.n. Mex19. IMG_9913 Coyuca de Benitez
MEXICO: Guerrero, ~1.5 km N Coyuca de Benitez (17.0230°N, 100.0795°W), 40 m a.s.l.



Anopsicus sp.n. Mex19. IMG_9918 Coyuca de Benitez
MEXICO: Guerrero, ~1.5 km N Coyuca de Benitez (17.0230°N, 100.0795°W), 40 m a.s.l.



Anopsicus sp.n. Mex24. IMG_9955 5km S Papanoa
MEXICO: Guerrero, ~5 km S Papanoa (17.2711°N, 101.0328°W), 75 m a.s.l.



Anopsicus sp.n. Mex129. IMG_1295 Cueva de los Sabinos
MEXICO: *San Luis Potosí*, ~12 km NE Ciudad Valles, outside of Cueva de los Sabinos (22.0920°N, 98.9571°W), 240 m a.s.l.



Anopsicus tehuanus Gertsch, 1982 (?). IMG_1941 17km NW Tehuantepec
MEXICO: *Oaxaca*, ~17 km NW Tehuantepec (16.3919°N, 95.3865°W), 165 m a.s.l.

***Apokayana* Huber, 2018**

Apokayana niah (Huber, 2016). IMG_3436 Niah
MALAYSIA-BORNEO: Sarawak: Niah Cave N.P., forest near headquarters (3.820°N, 113.763°E), 40 m a.s.l.



Apokayana kubah (Huber, 2016). IMG_2837 Kubah
MALAYSIA-BORNEO: Sarawak: Kubah N.P., along Waterfall Trail (1.596-1.606°N, 110.180-110.187°E), 200-300 m a.s.l.



Apokayana kapit (Huber, 2016). IMG_3110 Kapit
MALAYSIA-BORNEO: Sarawak: near Kapit, forest along river (1.937-1.944°N, 112.904-112.910°E), 80-120 m a.s.l.



Apokayana iban (Huber, 2011). IMG_3019 Semengoh
MALAYSIA-BORNEO: *Sarawak*: Semengoh Arboretum, Masing Trail (1.397-1.399°N, 110.317-110.322°E), 60-80 m a.s.l.



Apokayana seowi (Huber, 2016). IMG_2898 Penrissen
MALAYSIA-BORNEO: *Sarawak*: Mt. Penrissen near Borneo Highland Resort, Ma Gaseng Trail (1.124-1.127°N, 110.217°E), 870-930 m a.s.l.

***Arenita* Huber & Carvalho, 2019**



Arenita fazendinha Huber & Carvalho, 2019. IMG_0679 Macapá Fazendinha
BRAZIL: Amapá, forest SW Macapá, Área de Proteção Ambiental da Fazendinha, 'site 2' (0.051°S,
51.123°W), 20 m a.s.l.

***Arnapa* Huber, 2019**



Arnapa tinoor Huber, 2019. IMG_9332 Tinoor
INDONESIA: Sulawesi, North Sulawesi, Tinoor Fall near Tomohon (1.3820°N, 124.8363°E), 500 m a.s.l.



Arnapa tolire Huber, 2019. IMG_9627 Danau Tolire
INDONESIA: Ternate, Danau Tolire (Lake) (0.830°N, 127.311°E), 180-220 m a.s.l., degraded forest in ravine

***Artema* Walckenaer, 1837**



Artema atlanta Walckenaer, 1837. IMG_7103 Ratchaburi
THAILAND: *Ratchaburi*: Wat Huai Takaeng (13°35.23'N, 99°45.52'E), 30 m a.s.l.



Artema atlanta Walckenaer, 1837. DSCF0682 Mbutali
KENYA: Western Prov.: Mbutali, in building (0°29.3'N, 34°50.3'E), 1550 m a.s.l.



Artema bahla Huber, 2019. IMG_3258 W Bahla
OMAN: Ad Dakhiliya: W of Bahla (22.934°N, 57.084°E), 550 m a.s.l.



Artema bahla Huber, 2019. IMG_3297 Kittan
OMAN: Ad Dhahira: Ibri, Al Kittan Cave (23.298°N, 56.511°E), 410 m a.s.l.



Artema bahla Huber, 2019. IMG_3386 nr Fasah
OMAN: Al Batinah South: wadi near Fasah (23.303°N, 57.328°E), 660 m a.s.l.



Artema dhofar Huber, 2019. IMG_4315 Ain Hamran
OMAN: *Dhofar*: Ain Hamran cave (17.0964°N, 54.2765°E), 85 m a.s.l.



Artema ghubrat Huber, 2019. IMG_4067 Al Ghubrat
OMAN: *Ad Dakhiliyah*: between Tanuf and Al Hamra, Al Ghubrat cave (23.0718°N, 57.3680°E), lower entrance, in cave, 665 m a.s.l.

***Aymaria* Huber, 2000**

Aymaria calilegua Huber, 2000. IMG_8305 S San Pedro
ARGENTINA: Jujuy Province, S San Pedro (24.2637°S, 64.8959°W), 635 m a.s.l.



Aymaria calilegua Huber, 2000. IMG_8339 Calilegua
ARGENTINA: Jujuy Province, Calilegua National Park, near camping area (23.7612°S, 64.8517°W), 620 m a.s.l.

***Belisana* Thorell, 1898**



Belisana aninaj Huber, 2005. IMG_6775 Tham Hong
THAILAND: *Nakhon Si Thammarat*: Khao Nan N.P., Tham Hong (8°44.0'N, 98°38.1'E), 120 m a.s.l.



Belisana australis Huber, 2001. IMG_1393 Sto Domingo
PHILIPPINES: Mindanao, Bukidnon Prov., Santo Domingo (7.782°N, 125.397°E), 560 m a.s.l.



Belisana bohorok Huber, 2005. IMG_3433 Niah
MALAYSIA-BORNEO: Sarawak: Niah Cave N.P., forest near headquarters (3.820°N, 113.763°E), 40 m a.s.l.



Belisana sp.n. Bor7. IMG_3187 Lambir
MALAYSIA-BORNEO: Sarawak: Lambir Hills N.P. (4.198-4.207°N, 114.034-114.045°E), 60-150 m a.s.l.



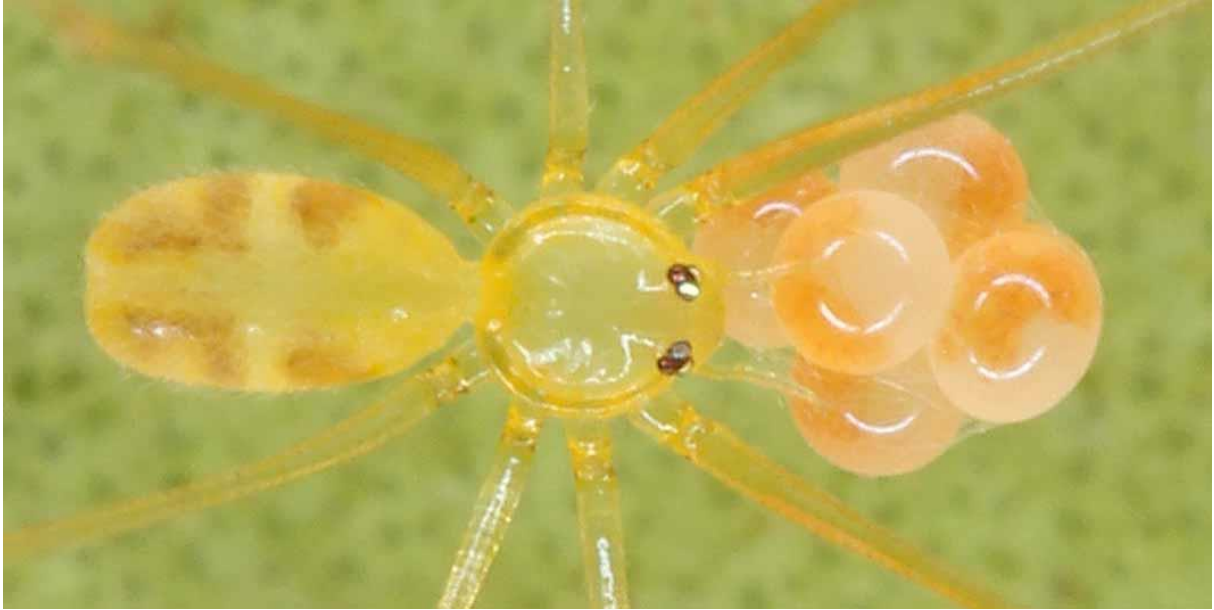
Belisana sp.n. Bor85. IMG_3116 Kapit

MALAYSIA-BORNEO: *Sarawak*: near Kapit, forest along river (1.937-1.944°N, 112.904-112.910°E), 80-120 m a.s.l.



Belisana sp.n. Bor93. IMG_3017 Semengoh

MALAYSIA-BORNEO: *Sarawak*: Semengoh Arboretum, Masing Trail (1.397-1.399°N, 110.317-110.322°E), 60-80 m a.s.l.



Belisana sp.n. Bor121. IMG_2784 Bako
MALAYSIA-BORNEO: Sarawak: Bako N.P., along Lintang Trail (1.713-1.722°N, 110.447-110.457°E), 10-130 m a.s.l.



Belisana sp.n. Bor121. IMG_2807 Bako
MALAYSIA-BORNEO: Sarawak: Bako N.P., along Lintang Trail (1.713-1.722°N, 110.447-110.457°E), 10-130 m a.s.l.



Belisana sp.n. Bor127. IMG_3897 Sepilok
MALAYSIA-BORNEO: *Sabah*: Sepilok, Rainforest Discovery Centre, forest along Pitta Trail (5.875-5.878°N, 117.937-117.942°E), 30 m a.s.l.



Belisana sp.n. Bor127. IMG_3901 Sepilok
MALAYSIA-BORNEO: *Sabah*: Sepilok, Rainforest Discovery Centre, forest along Pitta Trail (5.875-5.878°N, 117.937-117.942°E), 30 m a.s.l.



Belisana sp.n. Bor137. IMG_3858 Poring
MALAYSIA-BORNEO: Sabah: Mt. Kinabalu, Poring Hot Springs, forest near beginning of Kipungit Trail (6.048°N, 116.706°E), 450 m a.s.l.



Belisana sp.n. Bor160. IMG_3645 Crocker
MALAYSIA-BORNEO: Sabah: Crocker Range between Kota Kinabalu and Tambuan, N-slope, forest along river (5.834°N, 116.336°E), 1600 m a.s.l.



Belisana doloduo Huber, 2005. IMG_9345 Tinoor
INDONESIA: Sulawesi, North Sulawesi, Tinoor Fall near Tomohon (1.3820°N, 124.8363°E), 500 m a.s.l.



Belisana fraser Huber, 2005. IMG_6012 Frasers Hill
MALAYSIA: *Selangor*: Fraser's Hill (3°39.58'N, 101°44.59'E), 730 m a.s.l.



Belisana gowindahela Huber, 2019. IMG_2475 Kandy
SRI LANKA: *Central Prov.*: Kandy, Dunumadallawa Forest (7.282°N, 80.643°E), 600-680 m a.s.l.



Belisana gowindahela Huber, 2019. IMG_2520 Ethagala
SRI LANKA: *North Western Prov.*: Kurunegala, at base of Ethagala (Athugala) Mtn (7.490°N, 80.369°E), 170 m a.s.l.



Belisana gowindahela Huber, 2019. IMG_2731 Gowindahela
SRI LANKA: Uva Prov.: near Gowindahela (7.041°N, 81.538°E), 130-180 m a.s.l.



Belisana gowindahela Huber, 2019. IMG_2926 Dematagala
SRI LANKA: Sabaragamuwa Prov.: above Dematagala (6.451°N, 80.751°E), 160 m a.s.l.



Belisana junkoae (Irie, 1997). DSCF1857 Xueshan
TAIWAN: Taichung: Xueshan Road at ~1500 m a.s.l. (24.2476°N, 120.9351°E)



Belisana kaharian Huber, 2005. IMG_2879 Penrissen
MALAYSIA-BORNEO: Sarawak: Mt. Penrissen near Borneo Highland Resort, Ma Gaseng Trail (1.124-1.127°N, 110.217°E), 870-930 m a.s.l.



Belisana ketambe Huber, 2005. IMG_6212 Gunung Jerai
MALAYSIA: Kedah: Gunung Jerai, forest near Sri Perigi Waterfall (5°48.5'N, 100°24.5'E), 30 m a.s.l.



Belisana ketambe Huber, 2005. IMG_6368 Hala Bala
THAILAND: Narathiwat: Hala Bala Wildlife Sanctuary, 'site 1', forest at river near headquarters (5°47.8'N, 101°49.9'E), 90 m a.s.l.



Belisana keyti Huber, 2005. IMG_2862 Hakgala
SRI LANKA: *Central Prov.*: Hakgala Forest (6.930°N, 80.814°E), 1790 m a.s.l.



Belisana leuser Huber, 2005. IMG_6093 Cameron Highlands
MALAYSIA: *Pahang*: Cameron Highlands, near Tanah Rata (4°27.7'N, 101°23.4'E), 1300-1400 m a.s.l.



Belisana leuser Huber, 2005. IMG_6372 Hala Bala
THAILAND: Narathiwat: Hala Bala Wildlife Sanctuary, 'site 1', forest at river near headquarters
(5°47.8'N, 101°49.9'E), 90 m a.s.l.



Belisana leuser Huber, 2005. IMG_8739 Berastegi
INDONESIA: Sumatra, North Sumatra, N Berastagi, forest near Sikulikap Fall (3.242°N, 98.538°E), 1150
m a.s.l.



Belisana leuser Huber, 2005. IMG_8789 Anai

INDONESIA: Sumatra, West Sumatra, Lembah Anai Forest Reserve, forest along stream (0.472°S, 100.363°E), 600 m a.s.l.



Belisana leuser Huber, 2005. IMG_8944 Harau

INDONESIA: Sumatra, West Sumatra, forest at Gua Limpa (Cave) above Harau Valley (0.104°S, 100.680°E), 770 m a.s.l.



Belisana sp.n. Mal3. IMG_5453 MacRitchie Reservoir
SINGAPORE: MacRitchie Reservoir Park (1°21.3'N, 103°48.8'E), 50 m a.s.l.



Belisana sp.n. Mal3. IMG_5586 Rifle Range
SINGAPORE: Rifle Range (1°21.3'N, 103°47.8'E), 50 m a.s.l.



Belisana sp.n. Mal30. IMG_5776 Gunung Ledang
MALAYSIA: *Johor*: Gunung Ledang, forest near Puteri Falls (2°21.2'-2°21.6'N, 102°37.8'-102°38.1'E), 100-300 m a.s.l.



Belisana sp.n. Mal55. IMG_5938 Ulu Dong
MALAYSIA: *Pahang*: Ulu Dong (3°56.5'N, 102°01.6'E), 190 m a.s.l.



Belisana sp.n. Mal72. IMG_6050 Gunung Liang
MALAYSIA: *Perak*: Gunung Liang (3°47.7'N, 101°32.0'E), 250 m a.s.l.



Belisana sp.n. Mal77. IMG_6058 Cameron Highlands
MALAYSIA: *Pahang*: Cameron Highlands, near Tanah Rata (4°27.7'N, 101°23.4'E), 1300-1400 m a.s.l.



Belisana sp.n. Mal91. IMG_6225 Gunung Jerai

MALAYSIA: *Kedah*: Gunung Jerai, forest near Sri Perigi Waterfall (5°48.5'N, 100°24.5'E), 30 m a.s.l.



Belisana minneriya Huber, 2019. IMG_2582 Minneriya

SRI LANKA: *North Central Prov.*: Minneriya Forest (8.047°N, 80.832°E)



Belisana nahtanoj Huber, 2005. IMG_9372 Mahawu
INDONESIA: Sulawesi, North Sulawesi, Mt. Mahawu near Tomohon (1.344°N, 124.867°E), ~1000 m
a.s.l.



Belisana nahtanoj Huber, 2005. IMG_9375 Mahawu
INDONESIA: Sulawesi, North Sulawesi, Mt. Mahawu near Tomohon (1.344°N, 124.867°E), ~1000 m
a.s.l.



Belisana sp.n. Phi46. IMG_2270 Pamulaklakin
 PHILIPPINES: Luzon, Bataan Prov., near Olangapo, along river near Pamulaklakin Forest Trail
 (14.798°N, 121.338°E), 80 m a.s.l.



Belisana sp.n. Phi94. IMG_1818 Mt Hibok Hibok
 PHILIPPINES: Camiguin Isl., Mt. Hibok Hibok (9.196°N, 124.692°E), 600 m a.s.l.



Belisana sp.n. Phi148. IMG_1261 Sto Domingo
PHILIPPINES: Mindanao, Bukidnon Prov., Santo Domingo (7.782°N, 125.397°E), 560 m a.s.l.



Belisana pranburi Huber, 2005. IMG_6877 Khao Sok
THAILAND: Surat Thani: Khao Sok N.P., forest along nature trail (8°54.8'N, 98°29.3'-98°30.5'E), leaf litter, 110-160 m a.s.l.



Belisana ranong Huber, 2005. IMG_2758 Bako
MALAYSIA-BORNEO: Sarawak: Bako N.P., along Lintang Trail (1.713-1.722°N, 110.447-110.457°E), 10-130 m a.s.l.



Belisana ranong Huber, 2005. IMG_2798 Bako
MALAYSIA-BORNEO: Sarawak: Bako N.P., along Lintang Trail (1.713-1.722°N, 110.447-110.457°E), 10-130 m a.s.l.



Belisana ranong Huber, 2005. IMG_6295 Penang
MALAYSIA: *Pulau Pinang*: Penang N.P. near Teluk Bahang (5°27.7'N, 100°12.1'E), 10-50 m a.s.l.



Belisana ranong Huber, 2005. IMG_6940 Klong Nakha
THAILAND: *Ranong*: Klong Nakha Wildlife Sanctuary (9°27.6'N, 98°30.7'E), 40 m a.s.l.



Belisana ratnapura Huber, 2005. IMG_2328 Mitirigala
SRI LANKA: Western Prov.: Mitirigala Forest (6.997°N, 80.175°E), 70 m a.s.l.



Belisana ratnapura Huber, 2005. IMG_2411 Kitulgala
SRI LANKA: Sabaragamuwa Prov.: near Kitulgala (6.985°N, 80.430°E), 170 m a.s.l.



Belisana ratnapura Huber, 2005. IMG_2960 Viharekele
SRI LANKA: Southern Prov.: Viharekele Forest (6.099°N, 80.594°E), 120 m a.s.l.



Belisana ratnapura Huber, 2005. IMG_3043 Mapalena Ella
SRI LANKA: Sabaragamuwa Prov.: Mapalena Ella (6.774°N, 80.460°E), 270 m a.s.l.



Belisana ratnapura Huber, 2005. IMG_3090 Labugama
SRI LANKA: Western Prov.: Labugama Forest (6.846°N, 80.175°E), 150 m a.s.l.



Belisana sabah Huber, 2005. IMG_3722 Kinabalu nr lodge
MALAYSIA-BORNEO: Sabah: Mt. Kinabalu, forest above Kinabalu Mountain Lodge (6.012-6.014°N, 116.534°E), 1570-1650 m a.s.l.



Belisana sabah Huber, 2005. IMG_3729 Kinabalu nr lodge
MALAYSIA-BORNEO: *Sabah*: Mt. Kinabalu, forest above Kinabalu Mountain Lodge (6.012-6.014°N, 116.534°E), 1570-1650 m a.s.l.



Belisana sabah Huber, 2005. IMG_3907 Sepilok
MALAYSIA-BORNEO: *Sabah*: Sepilok, Rainforest Discovery Centre, forest along Pitta Trail (5.875-5.878°N, 117.937-117.942°E), 30 m a.s.l.



Belisana sandakan Huber, 2005. IMG_8869 Baso
INDONESIA: Sumatra, West Sumatra, near Baso Cave (0.249°S, 100.483°E), 700 m a.s.l.



Belisana sandakan Huber, 2005. IMG_8991 Bukittinggi
INDONESIA: Sumatra, West Sumatra, Bukittinggi, degraded forest in canyon, 'site 2' (0.3116°S, 100.3416°E), 840 m a.s.l.



Belisana sandakan Huber, 2005. IMG_8996 Bukittinggi
INDONESIA: Sumatra, West Sumatra, Bukittinggi, degraded forest in canyon, 'site 2' (0.3116°S, 100.3416°E), 840 m a.s.l.



Belisana sp.n. Tai4. DSCF1812 Tunghai Univ
TAIWAN: Taichung: Tunghai University campus (24.176°N, 120.60°E), 120-180 m a.s.l.



Belisana tambligan Huber, 2005. IMG_9699 Tambligan
INDONESIA: Bali, Lake Tambligan, forest along SE side of lake (8.265°S, 115.098°E), ~1420 m a.s.l.

***Blancoa* Huber, 2000**



Blancoa piacoa Huber, 2000. IMG_6276 El Triunfo-Piacoa
VENEZUELA: Delta Amacuro: between El Triunfo and Piacoa (8.5285°N, 62.2958°W), 75 m a.s.l.



Blanca piacoa Huber, 2000. IMG_6385 La Llovizna
 VENEZUELA: *Bolívar*: Ciudad Guayana, Parque La Llovizna (8.3130°N, 62.6724°W), 50 m a.s.l.

***Buitinga* Huber, 2003**



Buitinga batwa Huber & Warui, 2012. DSCF0089 Mgahinga
 UGANDA: Kisoro District, Mgahinga Gorilla N.P., Gorge (1°22.9'S, 29°35.8-36.0'E), 2900-3000 m a.s.l.



Buitinga griswoldi Huber, 2003. DSCF0149 Bwindi
UGANDA: Kanungu District, Bwindi Impenetrable N.P., waterfall trail near Buhoma (0°59.8'-1°00.2'S,
29°36.9-37.2'E), ~1500-1600 m a.s.l.



Buitinga ruhiza Huber, 2003. DSCF0177 Bwindi
UGANDA: Kanungu District, Bwindi Impenetrable N.P., waterfall trail near Buhoma (0°59.8'-1°00.2'S,
29°36.9-37.2'E), ~1500-1600 m a.s.l.



Buitinga ruwenzori Huber, 2003. DSCF0324 Nyabitaba
UGANDA: Kasese District, Ruwenzori Mts., near Nyabitaba Hut ($\sim 0^{\circ}21.5'N$, $29^{\circ}58.7'E$), ~ 2600 m a.s.l.

***Calapnita* Simon, 1892**



Calapnita bario Huber, 2017. IMG_3451 Bario
MALAYSIA-BORNEO: Sarawak: Bario, forest along river N of town (3.765 - $3.771^{\circ}N$, 115.444 - $115.448^{\circ}E$), 1170 - 1250 m a.s.l.



Calapnita bohol Huber, 2017. IMG_2379 Loboc River
PHILIPPINES: Bohol Isl., near Loboc, above Loboc River ($\sim 9.655^{\circ}N$, $124.015^{\circ}E$), ~ 250 m a.s.l.



Calapnita bohoh Huber, 2017. IMG_2440 Rajah Sikatuna

PHILIPPINES: Bohol Isl., Rajah Sikatuna (Magsaysay Park) (9.705°N, 124.123°E), 430 m a.s.l.



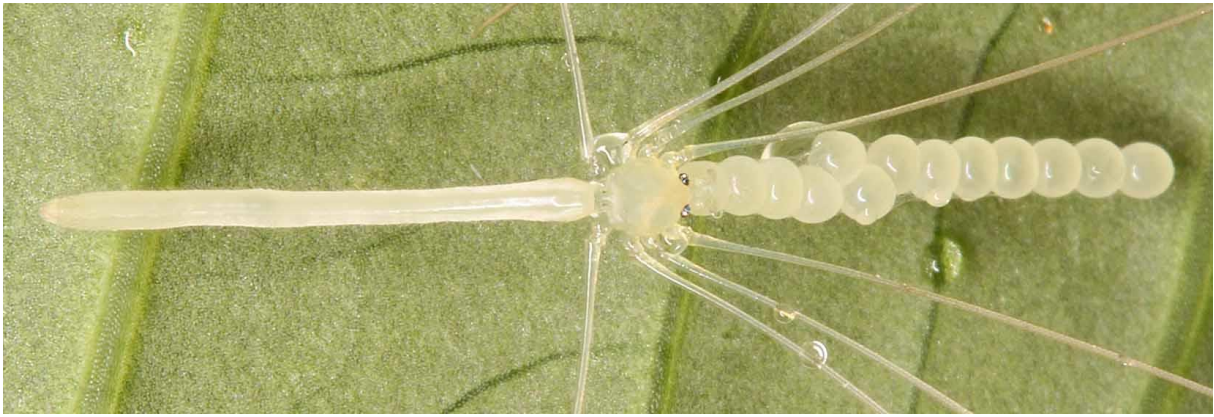
Calapnita magaseng Huber, 2017. IMG_2910 Penrissen

MALAYSIA-BORNEO: Sarawak: Mt. Penrissen near Borneo Highland Resort, Ma Gaseng Trail (1.124-1.127°N, 110.217°E), 870-930 m a.s.l.



Calapnita magaseng Huber, 2017. IMG_2994 Semengoh

MALAYSIA-BORNEO: Sarawak: Semengoh Arboretum, Masing Trail (1.397-1.399°N, 110.317-110.322°E), 60-80 m a.s.l.



Calapnita nunezae Huber, 2017. IMG_1482 Mt Matutum
PHILIPPINES: Mindanao, Mt. Matutum, Kawit Forest, 'site 1' (6.338°N, 125.104°E), 950 m a.s.l.



Calapnita nunezae Huber, 2017. IMG_1826 Katibawasan Falls
PHILIPPINES: Camiguin Isl., Katibawasan Falls (9.215°N, 124.720°E), 300 m a.s.l.



Calapnita nunezae Huber, 2017. IMG_1862 Katibawasan Falls
PHILIPPINES: Camiguin Isl., Katibawasan Falls (9.215°N, 124.720°E), 300 m a.s.l.



Calapnita saluang Huber, 2011. IMG_6689 Phanombencha
THAILAND: Krabi: Khao Phanom Bencha N.P., trails near headquarters (8°14.1'N, 98°55.1'E), 150-300 m a.s.l.



Calapnita saluang Huber, 2011. IMG_8730 Berastegi
INDONESIA: Sumatra, North Sumatra, N Berastagi, forest near Sikulikap Fall (3.242°N, 98.538°E), 1150 m a.s.l.



Calapnita saluang Huber, 2011. IMG_8836 Anai
INDONESIA: Sumatra, West Sumatra, Lembah Anai Forest Reserve, forest along stream (0.472°S, 100.363°E), 600 m a.s.l.



Calapnita saluang Huber, 2011. IMG_8978 Harau
INDONESIA: Sumatra, West Sumatra, forest at Gua Limpa (Cave) above Harau Valley (0.104°S, 100.680°E), 770 m a.s.l.



Calapnita vermiformis Simon, 1892. IMG_2077 Mt. Isarog
PHILIPPINES: Luzon, Camarines Sur Prov., Mt. Isarog, W slope (13.664°N, 123.34-123.35°E), ~600-900 m a.s.l.



Calapnita vermiformis Simon, 1892. IMG_2468 Twin Lakes
PHILIPPINES: Negros Isl., Negros Oriental Prov., Twin Lakes N.P. (9.368-9.365°N, 123.181-123.182°E), 850-950 m a.s.l., forest above Balianasayao Crater Lake

***Canaima* Huber, 2000**



Canaima arima (Gertsch, 1982). IMG_7675 Simla
TRINIDAD AND TOBAGO: Trinidad, Arima Valley, Simla (10.6926°N, 61.2890°W), 250 m a.s.l.



Canaima arima (Gertsch, 1982). IMG_7681 Simla
TRINIDAD AND TOBAGO: Trinidad, Arima Valley, Simla (10.6926°N, 61.2890°W), 250 m a.s.l.



Canaima avila Huber, 2020. IMG_3776 El Ávila NP
 VENEZUELA: *Miranda*: El Ávila National Park, near La Julia, 'site 2' (10.5037°N, 66.8107°W), 1060 m
 a.s.l.



Canaima avila Huber, 2020. IMG_3781 El Ávila NP
 VENEZUELA: *Miranda*: El Ávila National Park, near La Julia, 'site 2' (10.5037°N, 66.8107°W), 1060 m
 a.s.l.



Canaima guaquiri Huber, 2020. IMG_3205 Guaquiri
 VENEZUELA: Yaracuy: Guaquiri, 'site 1' (10.2951°N, 68.6535°W), 120 m a.s.l.



Canaima loca Huber, 2020. IMG_7092 Laguna Negra
 VENEZUELA: Trujillo: near Boconó, Laguna Negra (9.3054°N, 70.1752°W), 1870 m a.s.l.

***Cantikus* Huber, 2018**

Cantikus erawan (Huber, 2011). IMG_6174 Gunung Jerai
MALAYSIA: *Kedah*: Gunung Jerai, forest near Sri Perigi Waterfall (5°48.5'N, 100°24.5'E), 30 m a.s.l.



Cantikus erawan (Huber, 2011). IMG_6654 Phanombencha
THAILAND: *Krabi*: Khao Phanom Bencha N.P., trails near headquarters (8°14.1'N, 98°55.1'E), 150-300 m a.s.l.



Cantikus erawan (Huber, 2011). IMG_6788 Khao Nan
THAILAND: *Nakhon Si Thammarat*: Khao Nan N.P. (8°46.2'N, 98°48.1'E), 250-300 m a.s.l.



Cantikus halabala (Huber, 2011). IMG_5755 Gunung Ledang
MALAYSIA: *Johor*: Gunung Ledang, forest near Puteri Falls (2°21.3'N, 102°38.1'E), 110 m a.s.l.



Cantikus halabala (Huber, 2011). IMG_5909 Ulu Dong
MALAYSIA: Pahang: Ulu Dong (3°56.5'N, 102°01.6'E), 190 m a.s.l.



Cantikus halabala (Huber, 2011). IMG_6042 Gunung Liang
MALAYSIA: Perak: Gunung Liang (3°47.7'N, 101°32.0'E), 250 m a.s.l.



Cantikus halabala (Huber, 2011). IMG_8712 Tangkahan
INDONESIA: Sumatra, North Sumatra, Tangkahan, forest S of village (3.677°N, 98.071°E), ~150 m a.s.l.



Cantikus halabala (Huber, 2011). IMG_6441 Hala Bala
THAILAND: Narathiwat: Hala Bala Wildlife Sanctuary, 'site 1', forest at river near headquarters (5°47.8'N, 101°49.9'E), 90 m a.s.l.



Cantikus kuhapimuk (Huber, 2016). IMG_6522 Wat Kuhapimuk
THAILAND: Yala: Wat Kuhapimuk, Tham Meud (6°31.7'N, 101°13.5'E), 40 m a.s.l.



Cantikus lintang (Huber, 2016). IMG_3440 Niah
MALAYSIA-BORNEO: Sarawak: Niah Cave N.P., forest near headquarters (3.820°N, 113.763°E), 40 m a.s.l.



Cantikus sepaku (Huber, 2011). IMG_9127 Bangkirai
INDONESIA-BORNEO: East Kalimantan, Bukit Bankirai (1.029°S, 116.867°E), 100 m a.s.l.

***Carapoia* González-Sponga, 1998**



Carapoia agilis Huber, 2018. IMG_7854 near Cachoeira da Gruta
BRAZIL: Pernambuco, near Bonito, forest near Cachoeira da Gruta (8°32.8'S, 35°42.7'W), 380 m a.s.l.



Carapoia agilis Huber, 2018. IMG_7982 Saltinho
BRAZIL: Pernambuco, Reserva Biológica de Saltinho (8°43.6'S, 35°10.7'W), 50 m a.s.l.



Carapoia agilis Huber, 2018. IMG_7998 Saltinho
BRAZIL: Pernambuco, Reserva Biológica de Saltinho (8°43.6'S, 35°10.7'W), 50 m a.s.l.



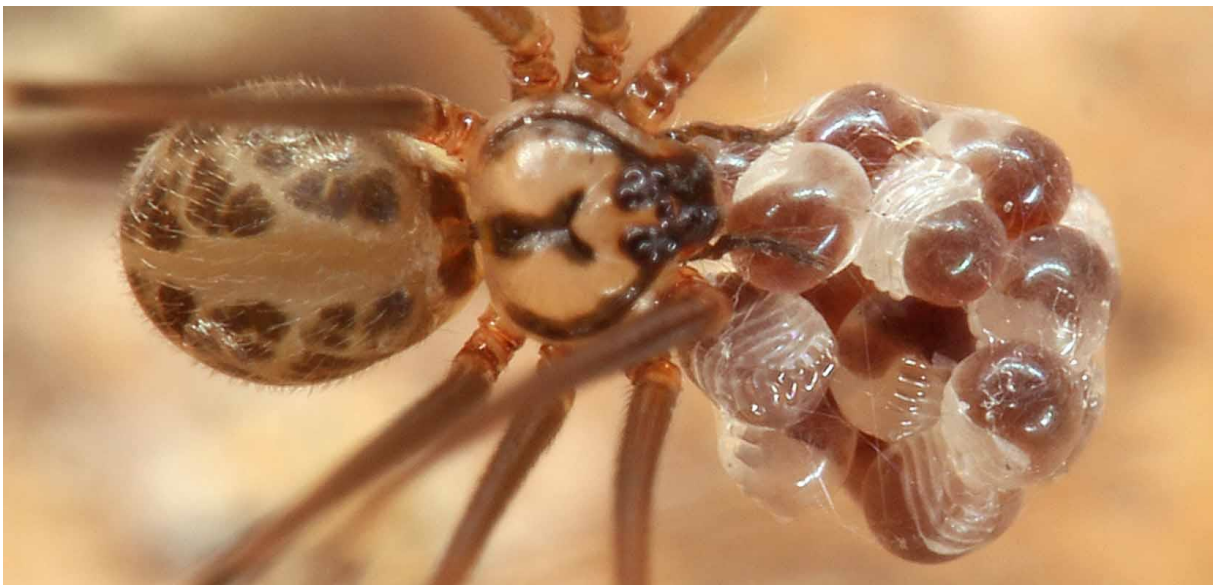
Carapoia alagoas Huber, 2016. IMG_7546 Est Ecol Murici
BRAZIL: Alagoas, near Murici, Estação Ecológica de Murici (9°14.8'S, 35°50.3'W), 350-400 m a.s.l.



Carapoia alagoas Huber, 2016. IMG_7722 Pedra Talhada
BRAZIL: Alagoas, Reserva Biológica de Pedra Talhada (9°14.5'-14.0'S, 36°26.5'-27.2'W), 650-700 m a.s.l.



Carapoia alagoas Huber, 2016. IMG_7773 Usina Serra Grande
BRAZIL: Alagoas, Usina Serra Grande, forest above sugercane plantations (8°58.3'S, 36°05.7'W), 450-550 m a.s.l.



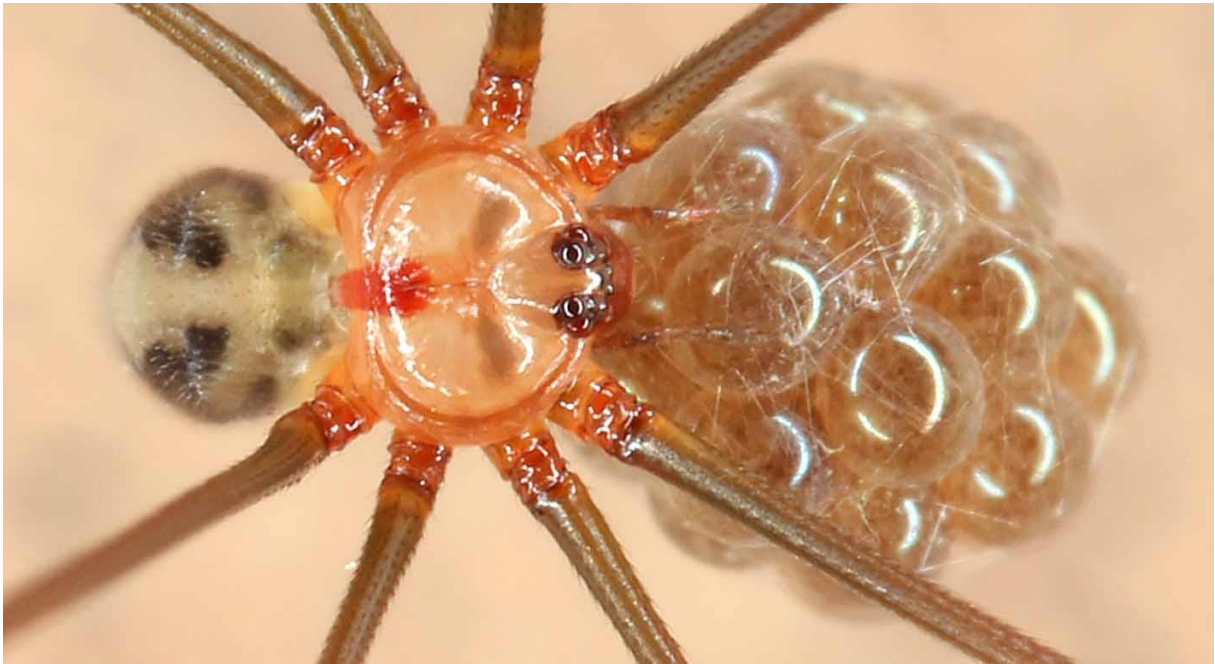
Carapoia alagoas Huber, 2016. IMG_7803 Usina Serra Grande
BRAZIL: Alagoas, Usina Serra Grande, forest above sugercane plantations (8°58.3'S, 36°05.7'W), 450-550 m a.s.l.



Carapoia bispina Huber, 2018. IMG_7933 nr Cachoeira da Gruta
BRAZIL: Pernambuco, near Bonito, forest near Cachoeira da Gruta (8°32.8'S, 35°42.7'W), 380 m a.s.l.



Carapoia bispina Huber, 2018. IMG_7938 nr Cachoeira da Gruta
BRAZIL: Pernambuco, near Bonito, forest near Cachoeira da Gruta (8°32.8'S, 35°42.7'W), 380 m a.s.l.



Carapoia cambridgei (Mello-Leitão, 1947). IMG_0570 near Marabá
BRAZIL: Pará, Marabá, forest near road, 'site 1' (5.414°S, 49.074°W), 140 m a.s.l.



Carapoia capixaba Huber, 2016. DSCF0025 Sooretama
BRAZIL: ES: Reserva Biológica de Sooretama, site 2 (19°00.7'S, 40°06.5'W), ~80 m a.s.l.



Carapoia carvalhoi Huber, 2016. IMG_7231 Santa Teresinha
BRAZIL: Bahia, near Santa Teresinha, Serra da Jibóia, near hilltop (12°51.33'S, 39°28.59'W), 800 m a.s.l.



Carapoia crasto Huber, 2005. IMG_7400 Mata de Crasto
BRAZIL: Sergipe, near Santa Luzia do Itanhy, Mata do Crasto (11°22.70'S, 37°25.10'W), 20 m a.s.l.



Carapoia djavani Huber, 2018. IMG_7551 Est Ecol Murici
BRAZIL: Alagoas, near Murici, Estação Serra do Ouro (9°14.49'S, 35°50.25'W), 500 m a.s.l.



Carapoia djavani Huber, 2018. IMG_7635 Est Ecol Murici
BRAZIL: Alagoas, near Murici, Estação Serra do Ouro (9°14.49'S, 35°50.25'W), 500 m a.s.l.



Carapoia djavani Huber, 2018. IMG_7677 Pedra Talhada
BRAZIL: Alagoas, Reserva Biológica de Pedra Talhada (9°14.5′-14.0′S, 36°26.5′-27.2′W), 650-700 m
a.s.l.



Carapoia djavani Huber, 2018. IMG_7685 Pedra Talhada
BRAZIL: Alagoas, Reserva Biológica de Pedra Talhada (9°14.5′-14.0′S, 36°26.5′-27.2′W), 650-700 m
a.s.l.



Carapoia djavani Huber, 2018. IMG_7787 Usina Serra Grande
BRAZIL: Alagoas, Usina Serra Grande, forest above sugarcane plantations (8°58.3'S, 36°05.7'W), 450-550 m a.s.l.



Carapoia fowleri Huber, 2000. IMG_2230 near Caverna do Maroaga
BRAZIL: Amazonas, Presidente Figueiredo, Maroaga Cave and surrounding forest (2.050°S, 59.972°W), 110-150 m a.s.l.



Carapoia gracilis Huber, 2016. DSCF0164 Pau Brasil
BRAZIL: BA: Parque Nacional do Pau Brasil, site 1 (16°28.2'S, 39°16.8'W), ~65 m a.s.l.



Carapoia jiboia Huber, 2016. IMG_7262 Santa Teresinha
BRAZIL: Bahia, near Santa Teresinha, Serra da Jibóia, near hilltop (12°51.33'S, 39°28.59'W), 800 m a.s.l.



Carapoia jiboia Huber, 2016. IMG_7316 Santa Terezinha
BRAZIL: Bahia, near Santa Teresinha, Serra da Jibóia, near hilltop (12°51.33'S, 39°28.59'W), 800 m a.s.l.



Carapoia kaxinawa Huber, 2018. IMG_1662 Fazenda Colorado
BRAZIL: Amazonas, Guajará, forest at Fazenda Colorado, 'site 2' (7.528°S, 72.655°W), 210-240 m a.s.l.



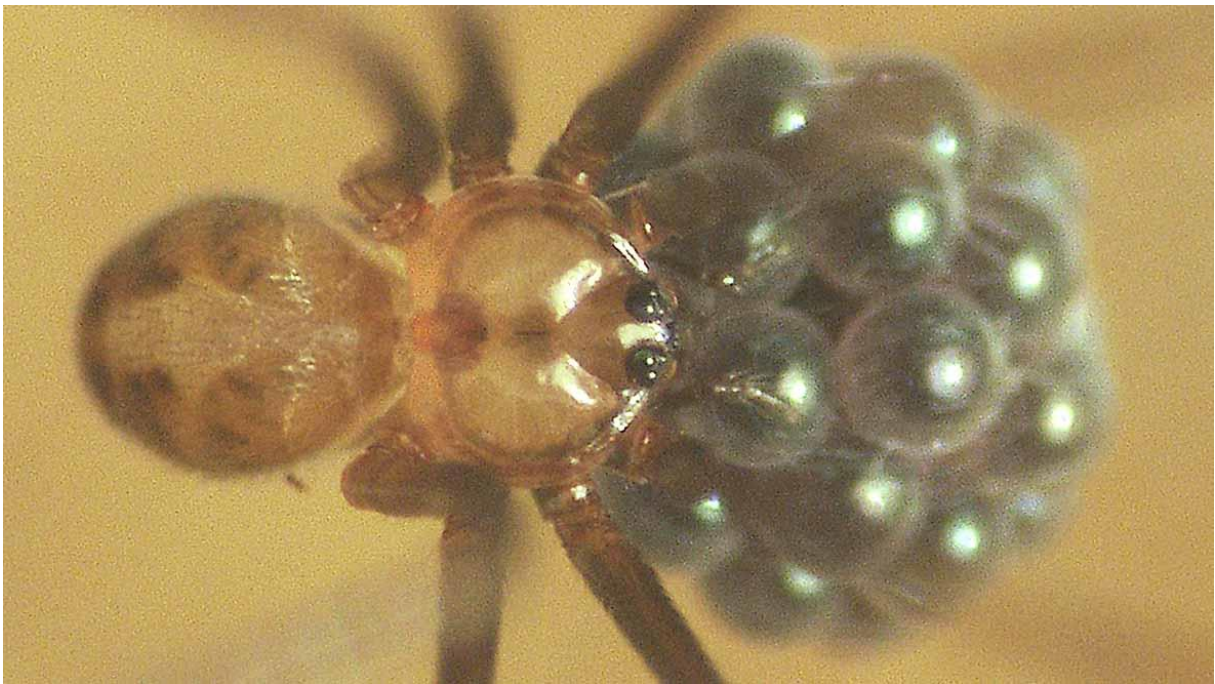
Carapoia lutea (Keyserling, 1891). IMG_4954 Turvo NP
BRAZIL: Rio Grande do Sul, Turvo National Park, near Salto do Yucumã (27.136°S, 53.882°W), 175 m a.s.l.



Carapoia macacu Huber, 2016. DSCF0156 Guapiacu
BRAZIL: RJ: Cachoeiras de Macacu, Reserva Ecol. Guapiaçú (22°24.4'-25.3'S, 42°44.2'-44.3'W), 140-280 m a.s.l.



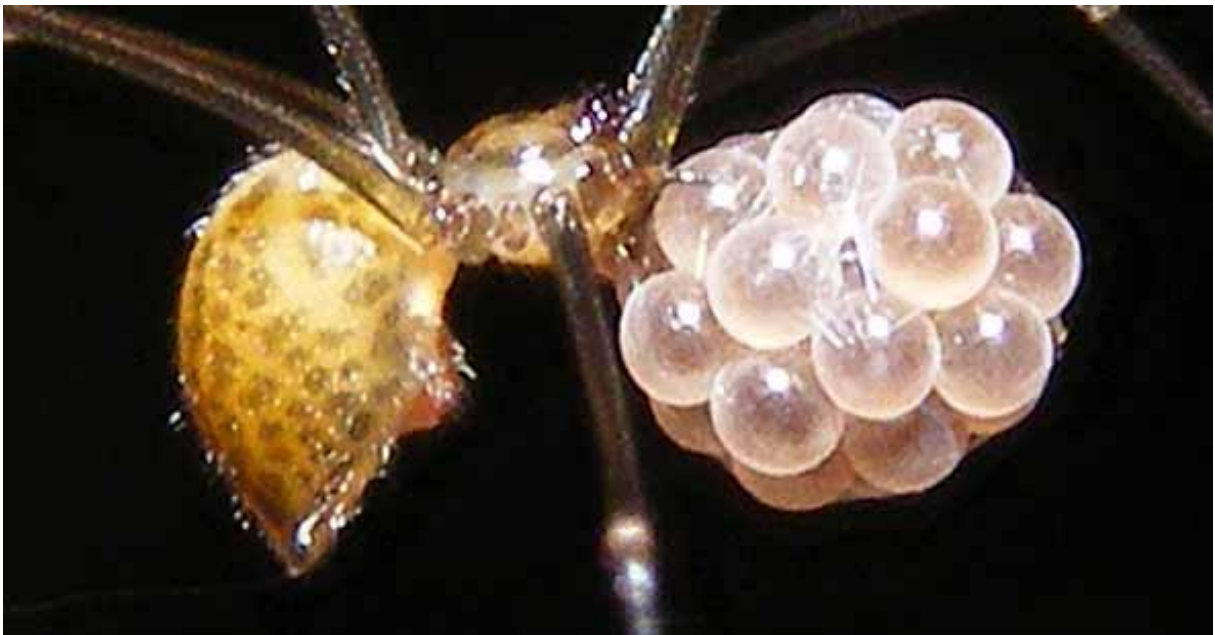
Carapoia maculata Huber, 2018. IMG_7350 Morro de Pedra
BRAZIL: Bahia, Fazenda Morro de Pedra (12°31.6'-31.8'S, 40°36.1-36.4'W), 490 m a.s.l.



Carapoia mirim Huber, 2016. DSC08767 Sooretama
BRAZIL: ES: Reserva Biológica de Sooretama, site 2 (19°00.7'S, 40°06.5'W), ~80 m a.s.l.



Carapoia munduruku Huber, 2018. IMG_0979 Tapajos km 221
BRAZIL: Pará, Floresta Nacional de Tapajós, km 221 (4.046°S, 54.938°W), 80 m a.s.l.



Carapoia patafina Huber, 2016. DSCF0107 Corrego do Veados
BRAZIL: ES: Reserva Biológica Córrego do Veados, site 1 (18°22.1'S, 40°08.3'W), ~80 m a.s.l.



Carapoia pulchra Huber, 2018. IMG_7698 Pedra Talhada
BRAZIL: Alagoas, Reserva Biológica de Pedra Talhada (9°14.5′-14.0′S, 36°26.5′-27.2′W), 650-700 m
a.s.l.



Carapoia pulchra Huber, 2018. IMG_7704 Pedra Talhada
BRAZIL: Alagoas, Reserva Biológica de Pedra Talhada (9°14.5′-14.0′S, 36°26.5′-27.2′W), 650-700 m
a.s.l.



Carapoia pulchra Huber, 2018. IMG_8276 Cabedelo
BRAZIL: Paraíba, Floresta Nacional da Restinga de Cabedelo, "Mata do Amém" (7°03.9'S, 34°51.2'W), 30 m a.s.l.



Carapoia saltinho Huber, 2016. IMG_7961 Saltinho
BRAZIL: Pernambuco, Reserva Biológica de Saltinho (8°43.6'S, 35°10.7'W), 50 m a.s.l.



Carapoia septentrionalis Huber, 2016. IMG_8018 São Vicente Ferrer
 BRAZIL: Pernambuco, near São Vicente Ferrer, 'site 2', forest and banana plantation (7°35.6'S,
 35°24.3'W), 360 m a.s.l.



Carapoia septentrionalis Huber, 2016. IMG_8208 Cafundo
 BRAZIL: Paraíba, Mata do Cafundó, 'site 2' (7°09.52'S, 35°03.63'W), 80 m a.s.l.



Carapoia septentrionalis Huber, 2016. IMG_8210 Cafundo
BRAZIL: Paraíba, Mata do Cafundó, 'site 2' (7°09.52'S, 35°03.63'W), 80 m a.s.l.



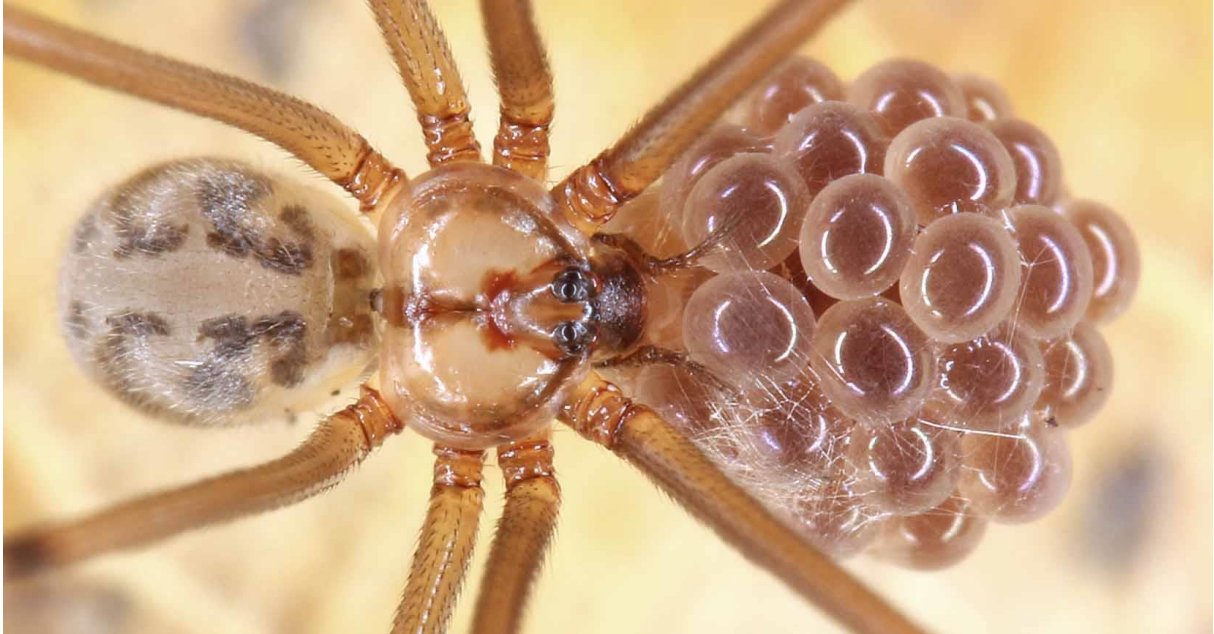
Carapoia septentrionalis Huber, 2016. IMG_8221 Buraquinho
BRAZIL: Paraíba, Jardim Botânico Benjamin Maranhão, "Mata do Buraquinho" (7°08.31'S, 34°51.46'W), 30 m a.s.l.



Carapoia suassunai Huber, 2018. IMG_8143 Pau Ferro
BRAZIL: Paraíba, Parque Estadual da Mata do Pau Ferro (6°57.9'S, 35°44.9'W), 600 m a.s.l.



Carapoia suassunai Huber, 2018. IMG_8153 Pau Ferro
BRAZIL: Paraíba, Parque Estadual da Mata do Pau Ferro (6°57.9'S, 35°44.9'W), 600 m a.s.l.



Carapoia suassunai Huber, 2018. IMG_8330 Mata da Pipa
BRAZIL: Rio Grande do Norte, Parque Estadual Mata de Pipa, outside park boundaries (6°13.70'S,
35°04.01'W), 50 m a.s.l.



Carapoia tapajos Huber, 2018. IMG_0899 Tapajos km 67
BRAZIL: Pará, Floresta Nacional de Tapajós, km 67, 'site 2' (2.875°S, 54.941°W), 190 m a.s.l.



Carapoia tenuis Huber, 2018. IMG_0869 Tapajos km 83
BRAZIL: Pará, Floresta Nacional de Tapajós, km 83 (3.049°S, 54.928°W), 95 m a.s.l.



Carapoia una Huber, 2005. DSCF0298 Res Biol Una
BRAZIL: BA: Reserva Biológica de Una, site 1 (15°11.0'S, 39°04.7'W), ~70-100 m a.s.l.



Carapoia utinga Huber, 2018. IMG_0427 Utinga
BRAZIL: Pará, Belém, Parque Estadual do Utinga, 'site 2' (1.433°S, 48.410°W), 25 m a.s.l.



Carapoia voltavelha Huber, 2016. IMG_4304 Itajai NP
BRAZIL: Santa Catarina, Serra do Itajaí National Park (27.058°S, 49.084°W), Chuva Trail, 300 m a.s.l.



Carapoia voltavelha Huber, 2016. IMG_4322 Itajai NP
BRAZIL: Santa Catarina, Serra do Itajai National Park (27.058°S, 49.084°W), Chuva Trail, 300 m a.s.l.



Carapoia voltavelha Huber, 2016. IMG_4351 Itajai NP
BRAZIL: Santa Catarina, Serra do Itajai National Park (27.058°S, 49.084°W), Chuva Trail, 300 m a.s.l.

***Cenemus* Saaristo, 2001**

Cenemus culiculus (Simon, 1898). IMG_4529 Morne Blanc
SEYCHELLES: Mahé: Port Glaud, Morne Blanc (4.6559°S, 55.4388°E), 430 m a.s.l.

***Chibchea* Huber, 2000**

Chibchea amapa Huber & Carvalho, 2019. IMG_0755 near Macapá
BRAZIL: Amapá, forest SW Macapá, 'site 3' (0.138°S, 51.367°W), 25 m a.s.l.



Chibchea araona Huber, 2000. IMG_8250 La Merced
 ARGENTINA: Catamarca Province, near La Merced (28.1390°S, 65.6322°W), 1060 m a.s.l.



Chibchea araona Huber, 2000. IMG_8370 Purmamarca
 ARGENTINA: Jujuy Province, between San Salvador and Purmamarca, 'site 1' (23.8866°S, 65.4588°W), 2100 m a.s.l.



Chibchea araona Huber, 2000. IMG_8474 La Caldera-El Carmen
ARGENTINA: Salta Province, between La Caldera and El Carmen, 'site 2' (24.5192°S, 65.3504°W),
1550 m a.s.l.



Chibchea araona Huber, 2000. IMG_8511 La Caldera-El Carmen
ARGENTINA: Salta Province, between La Caldera and El Carmen, 'site 2' (24.5192°S, 65.3504°W),
1550 m a.s.l.



Chibchea hamadae Huber & Carvalho, 2019. IMG_2166 Res Ducke
BRAZIL: Amazonas, Manaus, Reserva Ducke (2.932°S, 59.970°W), 80 m a.s.l.



Chibchea salta Huber, 2000. IMG_8470 La Caldera-El Carmen
ARGENTINA: Salta Province, between La Caldera and El Carmen, 'site 2' (24.5189°S, 65.3502°W),
1540 m a.s.l.



Chibchea santosi Huber & Carvalho, 2019. IMG_1625 Cruzeiro do Sul
BRAZIL: Acre, Cruzeiro do Sul, forest near airport (7.596°S, 72.767°W), 200 m a.s.l.



Chibchea santosi Huber & Carvalho, 2019. IMG_1668 Fazenda Colorado
BRAZIL: Amazonas, Guajará, forest at Fazenda Colorado, 'site 1' (7.525°S, 72.650°W), 225 m a.s.l.



Chibchea thunbergae Huber, 2020. IMG_2956 Santa Cruz de la Alegría
 VENEZUELA: Falcón: forest near Santa Cruz de La Alegría (10.8795°N, 68.4949°W), 100 m a.s.l.



Chibchea thunbergae Huber, 2020. IMG IMG_6850 Coro-Barquisimeto
 VENEZUELA: Lara: between Coro and Barquisimeto, El Rodeo (10.7240°N, 69.3008°W), 400 m a.s.l.



Chibchea tunebo Huber, 2000. IMG_2232 Las Piedras
 VENEZUELA: Mérida: Las Piedras, 'site 2' (8.9002°N, 70.6279°W), 1700 m a.s.l.

***Chisosa* Huber, 2000**



Chisosa caquetio Huber, 2019. IMG_6454 Cueva del Guano
 VENEZUELA: Falcón: Península de Paraguaná, Cueva del Guano (11.9000°N, 69.9479°W), 140 m a.s.l.



Chisosa diluta (Gertsch & Mulaik, 1941). DSCN8737-43 Big Bend
USA: Texas: Big Bend N.P., Tuff Canyon (29.150°N, 103.488°W, 710 m a.s.l.)

***Ciboneya* Pérez, 2001**



Ciboneya nuriae Huber & Pérez, 2001. DSCF0748 Vinales
CUBA: Pinar del Río: Viñales, forest at Las Maravillas de Viñales (22.562°N, 83.833°W), under rocks, 170m a.s.l.

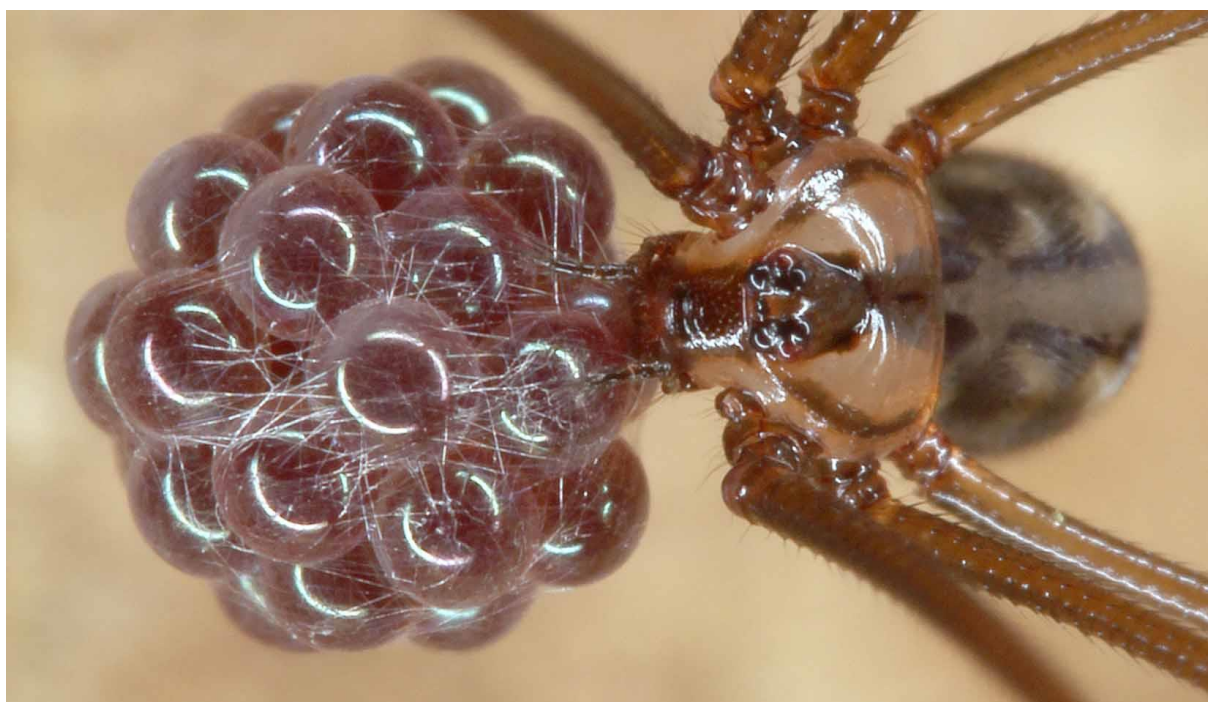


Ciboneya nuriae Huber & Pérez, 2001. DSCF0758 Vinales
CUBA: Pinar del Río: Viñales, forest at Las Maravillas de Viñales (22.562°N, 83.833°W), under rocks, 170m a.s.l.



Ciboneya nuriae Huber & Pérez, 2001. DSCF0786 Vinales
CUBA: Pinar del Río: Viñales, forest at Las Maravillas de Viñales (22.562°N, 83.833°W), under rocks, 170m a.s.l.

***Coryssocnemis* Simon, 1893**



Coryssocnemis simla Huber, 2000. IMG_7683 Simla
TRINIDAD AND TOBAGO: Trinidad, Arima Valley, Simla (10.6926°N, 61.2890°W), 250 m a.s.l.



Coryssocnemis simla Huber, 2000. IMG_7699 Simla
TRINIDAD AND TOBAGO: Trinidad, Arima Valley, Simla (10.6926°N, 61.2890°W), 250 m a.s.l.

***Crossopriza* Simon, 1893**

Crossopriza sp.n. Mor2. IMG_5264_Setti Fatma

MOROCCO: Setti-Fatma (=Sti Fadma) (31.221°N, 7.671°W - 31.219°N, 7.669°W), 1600-1690 m a.s.l.



Crossopriza sp.n. Mor2. IMG_5280_Setti Fatma

MOROCCO: Setti-Fatma (=Sti Fadma) (31.221°N, 7.671°W - 31.219°N, 7.669°W), 1600-1690 m a.s.l.



Crossopriza sp.n. Mor6. IMG_5345_NE Tizi N test
MOROCCO: NE Tizi n'Test (30.897°N, 8.339°W), 2075 m a.s.l.



Crossopriza sp.n. Mor6. IMG_5415 Aglou
MOROCCO: Aglou (29.806°N, 9.828°W), 10 m a.s.l.



Crossopriza sp.n. Mor6. IMG_5481 Ida Ougdinif
MOROCCO: SW Ida Ougnidif (29.8348°N, 9.0247°W), 1380 m a.s.l.



Crossopriza sp.n. Mor31. IMG_5587 N Errachidia
MOROCCO: N Errachidia (32.0396°N, 4.4214°W), 1180 m a.s.l.



Crossopriza sp.n. Om1. IMG_3156 Wadi Tiwi

OMAN: *Ash Sharqiyah South*: Wadi Tiwi (22.801°N, 59.240°E), 60 m a.s.l.



Crossopriza sp.n. Om1. IMG_4191 Sur-Kamil

OMAN: *Ash Sharqiyah South*: between Sur and Al Kamil (22.463°N, 59.387°E), 90 m a.s.l.



Crossopriza sp.n. Om20. IMG_3324 Ibri Rusdaq

OMAN: *Ad Dhahira*: near Miskin (between Ibri and Rusdaq) (23.496°N, 56.838°E), 660 m a.s.l.



Crossopriza sp.n. Om23. IMG_4077 Wadi Ghul

OMAN: *Ad Dakhiliyah*: Wadi Ghul, 'site 2' (23.233°N, 57.150°E), 1430 m a.s.l.



Crossopriza sp.n. Om62. IMG_4346 Wadi Darbat
OMAN: *Dhofar*: Wadi Darbat (17.09°N, 54.45°E), 200 m a.s.l.

***Galapa* Huber, 2000**



Galapa spiniphila Huber, 2020. IMG_6446 Cueva del Guano
VENEZUELA: *Falcón*: Península de Paraguaná, near Cueva del Guano (11.9026°N, 69.9456°W), 140 m a.s.l.



Galapa spiniphila Huber, 2020. IMG_6493 Cueva del Guano
 VENEZUELA: *Falcón*: Península de Paraguaná, near Cueva del Guano (11.9026°N, 69.9456°W), 140 m a.s.l.

Gen.n.B



Gen.n.B sp.n. Arg1. IMG_7874 Pampa de Achala
 ARGENTINA: Córdoba Province, Reserva Hídrica Provincial Pampa de Achala (31.5984°S, 64.7124°W), 1800 m a.s.l.



Gen.n.B sp.n. Arg4. IMG_7902 Nono

ARGENTINA: Córdoba Province, ~1.5 km E Nono (31.7980°S, 64.9877°W), 895 m a.s.l.



Gen.n.B sp.n. Arg118. IMG_9008 Alta Gracia

ARGENTINA: Cordoba Province, ~6 km NW Alta Gracia (31.6307°S, 64.4894°W), 710 m a.s.l.



Gen.n.B sp.n. Arg118. IMG_9013 Alta Gracia

ARGENTINA: Cordoba Province, ~6 km NW Alta Gracia (31.6307°S, 64.4894°W), 710 m a.s.l.

Gen.n.C



Gen.n.C sp.n. Arg80. IMG_8743 Cabra Corral

ARGENTINA: Salta Province, Cabra Corral, 'site 6', ~10.5 km E Coronel Moldes (25.2782°S, 65.3717°W), 1090 m a.s.l.



Gen.n.C sp.n. Arg80. IMG_8987 Chumbicha

ARGENTINA: Catamarca Province, ~5 km NW Chumbicha, near Balneario El Caolín, 'site 1' (28.8152°S, 66.2478°W), 610 m a.s.l.

***Gertschiola* Brignoli, 1981**



Gertschiola macrostyla (Mello-Leitão, 1941). IMG_7944 Villa Dolores-Chancani

ARGENTINA: Córdoba Province, between Villa Dolores and Chancani (31.8328°S, 65.2647°W), 500 m a.s.l.



Gertschiola macrostyla (Mello-Leitão, 1941). IMG_7948 Villa Dolores-Chancani
ARGENTINA: Córdoba Province, between Villa Dolores and Chancani (31.8328°S, 65.2647°W), 500 m a.s.l.



Gertschiola macrostyla (Mello-Leitão, 1941). IMG_7968 Cuesta Mayares
ARGENTINA: San Juan Province, Cuesta de Marayes (31.4949°S, 67.3358°W), 595 m a.s.l.



Gertschiola macrostyla (Mello-Leitão, 1941). IMG_8008 Valle Fertil
ARGENTINA: San Juan Province, San Agustín de Valle Fertil (30.6366°S, 67.4863°W), 880 m a.s.l.



Gertschiola macrostyla (Mello-Leitão, 1941). IMG_8014 Valle Fertil
ARGENTINA: San Juan Province, San Agustín de Valle Fertil (30.6366°S, 67.4863°W), 880 m a.s.l.

***Guaranita* Huber, 2000**

Guaranita sp.n. Arg54. IMG_8403 Purmamarca

ARGENTINA: Jujuy Province, between San Salvador and Purmamarca, 'site 2' (23.8849°S, 65.4613°W), 2150 m a.s.l.



Guaranita sp.n. Arg54. IMG_8442 Purmamarca

ARGENTINA: Jujuy Province, between San Salvador and Purmamarca, 'site 2' (23.8849°S, 65.4613°W), 2150 m a.s.l.



Guaranita sp.n. Arg54. IMG_8444 Purmamarca

ARGENTINA: Jujuy Province, between San Salvador and Purmamarca, 'site 2' (23.8849°S, 65.4613°W), 2150 m a.s.l.



Guaranita dooby Torres et al. 2016. IMG_8548 NW Campo Quijano

ARGENTINA: Salta Province, ~55 km NW Campo Quijano (24.4716°S, 65.9272°W), 3040 m a.s.l.



Guaranita dooby Torres et al. 2016. IMG_8559 NW Campo Quijano
ARGENTINA: Salta Province, ~55 km NW Campo Quijano (24.4716°S, 65.9272°W), 3040 m a.s.l.



Guaranita dooby Torres et al. 2016. IMG_8561 NW Campo Quijano
ARGENTINA: Salta Province, ~55 km NW Campo Quijano (24.4716°S, 65.9272°W), 3040 m a.s.l.



Guaranita goloboffi Huber, 2000. IMG_8676 Cabra Corral
ARGENTINA: Salta Province, Cabra Corral, 'site 1', ~5 km E Coronel Moldes (25.2870°S, 65.4238°W), 1080 m a.s.l.



Guaranita goloboffi Huber, 2000. IMG_8953 Chumbicha
ARGENTINA: Catamarca Province, ~5 km NW Chumbicha, near Balneario El Caolín, 'site 1' (28.8152°S, 66.2478°W), 610 m a.s.l.



Guaranita munda (Gertsch, 1982). IMG_7932 Nono
ARGENTINA: Córdoba Province, ~2.5 km E Nono (31.8025°S, 64.9762°W), 915 m a.s.l.



Guaranita yaculica Huber, 2000. IMG_8337 Calilegua
ARGENTINA: Jujuy Province, Calilegua National Park, near camping area (23.7612°S, 64.8517°W), 620 m a.s.l.

***Holocneminus* Berland, 1942**



Holocneminus huangdi Tong & Li, 2009. IMG_8896 Ngalau Indah
INDONESIA: Sumatra, West Sumatra, Ngalau Indah Cave near Payakumbuh (0.255°S, 100.603°E), 640
m a.s.l.



Holocneminus huangdi Tong & Li, 2009. IMG_8899 Ngalau Indah
INDONESIA: Sumatra, West Sumatra, Ngalau Indah Cave near Payakumbuh (0.255°S, 100.603°E), 640
m a.s.l.



Holocneminus multiguttatus (Simon, 1905). IMG_5601 Upper Selatar
SINGAPORE: Upper Selatar Reservoir Park (1°24.0'N, 103°48.4'E), 20 m a.s.l.



Holocneminus multiguttatus (Simon, 1905). IMG_5661 Pulau Ubin
SINGAPORE: Pulau Ubin, degraded forest near park headquarters (1°24.2'N, 103°58.2'E), 20 m a.s.l.



Holocneminus multiguttatus (Simon, 1905). IMG_6275 Penang
MALAYSIA: *Pulau Pinang*: Penang N.P. near Teluk Bahang (5°27.7'N, 100°12.1'E), 10-50 m a.s.l.



Holocneminus sp.n. Phi9. IMG_1920 Paragua



Holocneminus sp.n. Phi9. IMG_1945 Paragua

PHILIPPINES: Dinagat Isl., near Libjo, Paragua Forest, 'site 1' (10.222°N, 125.553°E), 130 m a.s.l.



Holocneminus sp.n. Phi9. IMG_2447 Twin Lakes

PHILIPPINES: Negros Isl., Negros Oriental Prov., Twin Lakes N.P. (9.368-9.365°N, 123.181-123.182°E), 850-950 m a.s.l., forest above Balianasayao Crater Lake



Holocneminus sp.n. Phi105. IMG_1729 Cristina Falls
PHILIPPINES: Mindanao, Misamis Occidental Prov., Iligan, NPC Nature's Park near Cristina Falls
(8.186°N, 124.192°E), 90 m a.s.l.



Holocneminus sp.n. Phi105. IMG_1734 Cristina Falls
PHILIPPINES: Mindanao, Misamis Occidental Prov., Iligan, NPC Nature's Park near Cristina Falls
(8.186°N, 124.192°E), 90 m a.s.l.

***Holocnemus* Simon, 1873**

Holocnemus caudatus (Dufour, 1820). IMG_5317_Tilamizene
MOROCCO: near Tilamizene (31.3500°N, 7.7645°W), 950 m a.s.l.



Holocnemus pluchei (Scopoli, 1763). IMG_2607_Dubrovnik_Vrbica
CROATIA: near Dubrovnik, Vrbica (42.679°N, 18.056°E), 15 m a.s.l.

***Hoplopholcus* Kulczyński, 1908**



Hoplopholcus asiaeminoris Brignoli, 1978. IMG_0094 Ermenek
TURKEY: Karaman Prov., Ermenek District, Ermenek (36.642°N, 32.893°E, 1380 m a.s.l.)



Hoplopholcus dim Huber, 2020. IMG_0032 last cave
TURKEY: Konya Prov., Derebucak District, unnamed small cave near road (37.362°N, 31.586°E), 1395 m a.s.l.



Hoplopholcus forskali (Thorell, 1871). IMG_0091 Taskent
TURKEY: Konya Prov., Taşkent District, Taşkent (36.922°N, 32.493°E, 1450 m a.s.l.)



Hoplopholcus forskali (Thorell, 1871). IMG_9988 Zindan
TURKEY: Isparta Prov., Aksu District, Zindan Mağarası (37.812°N, 31.085°E, 1300 m a.s.l.)



Hoplopholcus labyrinthi (Kulczyński, 1903). IMG_8565_Kronion Cave
GREECE: Crete: Kronion Cave (35°11.87'N, 25°29.63'E). 880 m a.s.l.



Hoplopholcus minotaurinus Senglet, 1971. IMG_8586 Milatos Cave
GREECE: Crete: Milatos Cave (35°18.49'N, 25°34.68'E). 140 m a.s.l.



Hoplopholcus minous Senglet 1971. IMG_8530 Exo Moulana
GREECE: Crete: Exo Moulana, along path to Richtis Waterfall (betw. 35°10.6'N, 25°59.3'E and 35°11.1'N, 25°59.2'E). 150-270 m a.s.l.



Hoplopholcus minous Senglet 1971. IMG_9125 Ampelos
GREECE: Samos, near Ampelos (37.7989°N, 26.7941°E), under rocks in forest, 320 m a.s.l.



Hoplopholcus minous Senglet 1971. IMG_9144 Marathokampos
GREECE: Samos, Marathokampos (37.7248°N, 26.6877°E), among rocks in forest, 220 m a.s.l.

***Ibotyporanga* Mello-Leitão, 1944**



Ibotyporanga sp.n. Br16-149. IMG_1434 Jamari Gran Piedra
BRAZIL: Rondônia, Floresta Nacional de Jamari, Gran Piedra (9.198°S, 63.082°W), 160 m a.s.l.



Ibotyporanga sp.n. Ven18-182. IMG_6499 Cueva del Guano
 VENEZUELA: *Falcón*: Península de Paraguaná, near Cueva del Guano (11.9026°N, 69.9456°W), 140 m a.s.l.

***Kairona* Huber & Carvalho, 2019**



Kairona selva Huber & Carvalho, 2019. IMG_1905 Tabatinga
 BRAZIL: Amazonas, forest near Tabatinga (4.244°S, 69.92-69.93°W), 90 m a.s.l.

***Kambiwa* Huber, 2000**

Kambiwa neotropica (Kraus, 1957). IMG_8440 near Macacos
 BRAZIL: Rio Grande do Norte, near Baraúna, along trail near Caverna dos Macacos (5°02.3'S,
 37°33.7'W), 100 m a.s.l.

***Kelabita* Huber, 2018**

Kelabita andulau (Huber, 2011). IMG_3242 Mulu
 MALAYSIA-BORNEO: Sarawak: Gunung Mulu N.P., Paku Waterfall Trail (4.037°N, 114.823°E), 60 m
 a.s.l.



Kelabita lambir (Huber, 2016). IMG_3196 Lambir
MALAYSIA-BORNEO: Sarawak: Lambir Hills N.P. (4.198-4.207°N, 114.034-114.045°E), 60-150 m a.s.l.

***Kintaqa* Huber, 2018**



Kintaqa buatong (Huber, 2016). IMG_6594 nr Krabi
THAILAND: Krabi: ~10 km N Krabi town, Tham Buatong (8°10.83'N, 98°53.06'E), 50 m a.s.l.



Kintaqa buatong (Huber, 2016). IMG_6666 Phanombench
THAILAND: Krabi: Khao Phanom Bench N.P., trails near headquarters (8°14.1'N, 98°55.1'E), 150-300 m a.s.l.



Kintaqa buatong (Huber, 2016). IMG_6672 Phanombencha
THAILAND: Krabi: Khao Phanom Bencha N.P., trails near headquarters (8°14.1'N, 98°55.1'E), 150-300 m a.s.l.



Kintaqa satun (Huber, 2011). IMG_6549 Thaleban
THAILAND: Satun: Thaleban N.P. (6°42.6'N, 100°10.2'E), forest near headquarters, 110 m a.s.l.



Kintaqa schwendingeri (Huber, 2011). IMG_6637 Phanombencha
THAILAND: Krabi: Khao Phanom Bencha N.P., trails near headquarters (8°14.1'N, 98°55.1'E), 150-300 m a.s.l.



Kintaqa schwendingeri (Huber, 2011). IMG_6795 Khao Sok
THAILAND: *Surat Thani*: Khao Sok N.P., forest along nature trail (8°54.8'N, 98°29.3'-98°30.5'E), leaf litter, 110-160 m a.s.l.



Kintaqa schwendingeri (Huber, 2011). IMG_6924 Klong Nakha
THAILAND: *Ranong*: Klong Nakha Wildlife Sanctuary (9°27.6'N, 98°30.7'E), 40 m a.s.l.

***Leptopholcus* Simon, 1893**



Leptopholcus borneensis Deeleman-Reinhold, 1986. IMG_6675 Phanombencha
THAILAND: *Krabi*: Khao Phanom Bencha N.P., trails near headquarters (8°14.1'N, 98°55.1'E), 150-300 m a.s.l.



Leptopholcus dschang Huber, 2011. cameroon0322

CAMEROON: Southwest Region: near Dschang, Attuleh, site 2 (5°27.9'N, 9°56.5'E), 1800 m a.s.l.



Leptopholcus gabonicus Huber, 2014. DSCF0071 nr Kinguele

GABON: Estuaire: Monts de Cristal, near Kingué (0°27.8'N, 10°16.7'E), 100 m a.s.l.



Leptopholcus gabonicus Huber, 2014. DSCF0205 Mayebout

GABON: Ogooué-Ivindo: Monts de Belinga, forest near Mayebout (1°06.7'N, 13°06.6'E), 500 m a.s.l.



Leptopholcus gracilis Berland, 1920. DSCF0200 Arabuko-Sokoke
KENYA: Coast Prov.: Arabuko-Sokoke Forest near road (3°18.3'S, 39°59.2'E), 20 m a.s.l.



Leptopholcus gracilis Berland, 1920. DSCF0222 Arabuko-Sokoke
KENYA: Coast Prov.: Arabuko-Sokoke Forest near road (3°18.3'S, 39°59.2'E), 20 m a.s.l.



Leptopholcus guineensis Millot, 1941. DSCF0452 NW Mamou
GUINEA: Moyenne-Guinée: NW Mamou (10°30.5'N, 12°11.6'W), 890 m a.s.l.



Leptopholcus guineensis Millot, 1941. DSCF1501-Wli

GHANA: Volta Region: Agumatsa Wildlife Sanctuary, Wli waterfall (7.1036°N, 0.6006°E), ~300 m a.s.l.



Leptopholcus tipula (Simon, 1907). DSCF0250 Kyambura

UGANDA: Bushenyi District, Kyambura River Gorge, (~0°10.7'S, 30°05.8'E), 900 m a.s.l.



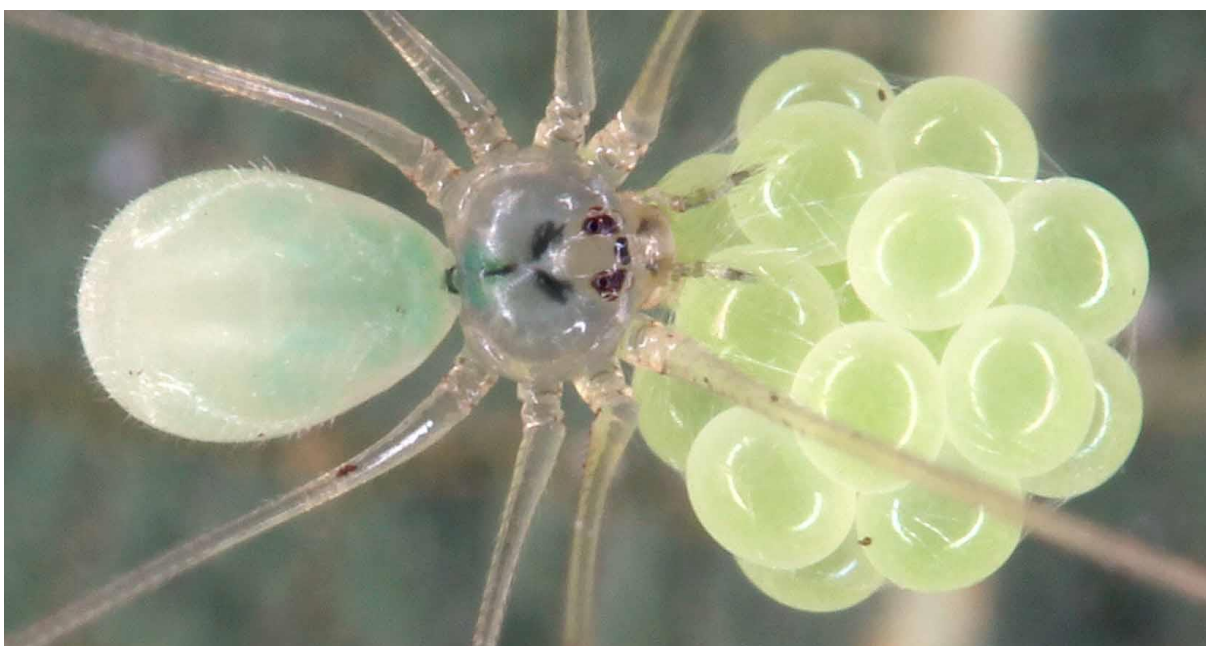
Leptopholcus tipula (Simon, 1907). DSCF0585 Dieke

GUINEA: Guinée Forestière: Forêt Classée de Diéké (7°32.0'N, 8°49.9'W), 430 m a.s.l.



Leptopholcus tipula (Simon, 1907). DSCF0679 Ziama
GUINEA: Guinée Forestière: Forêt Classée de Ziama (8°24.2'N, 9°19.3'W), 640 m a.s.l.

***Litoporus* Simon, 1893**



Litoporus aerius Simon, 1893. IMG_5775 El Avila
VENEZUELA: *Capital*: Parque Nacional El Avila, Sabas Nieves (10.5165°N, 66.8558°W), 1080 m a.s.l.



Litoporus sp.n. Br15-107. IMG_8077 near Joao Alfredo
 BRAZIL: Pernambuco, rocky outcrop near João Alfredo (7°50.05'S, 35°37.65'W), 360 m a.s.l.



Litoporus sp.n. Br15-107. IMG_8185 near Pocinhos
 BRAZIL: Paraíba, near Pocinhos, Caatinga near road (7°04.1'S, 36°00.4'W), 700 m a.s.l.



Litoporus sp.n. Br16-62. IMG_0847 Tapajos km 83
BRAZIL: Pará, Floresta Nacional de Tapajós, km 83 (3.049°S, 54.928°W), 95 m a.s.l.



Litoporus sp.n. Br16-62. IMG_1013 Tapajos km 72
BRAZIL: Pará, Floresta Nacional de Tapajós, km 72, 'site 2' (2.940°S, 54.933°W), 140 m a.s.l.



Litoporus sp.n. Br16-100. IMG_1029 Tapajos km 72

BRAZIL: Pará, Floresta Nacional de Tapajós, km 72, 'site 2' (2.940°S, 54.933°W), 140 m a.s.l.



Litoporus sp.n. Br16-106. IMG_1161 Humaita

BRAZIL: Acre, Rio Branco, Reserva Florestal Humaitá (9.749°S, 67.666°W), 180 m a.s.l.



Litoporus sp.n. Br16-106. IMG_1163 Humaita
BRAZIL: Acre, Rio Branco, Reserva Florestal Humaitá (9.749°S, 67.666°W), 180 m a.s.l.



Litoporus sp.n. Br16-129. IMG_1322 Jamari
BRAZIL: Rondônia, Floresta Nacional de Jamari, 'site 1' (9.193°S, 63.107°W), 130 m a.s.l.



Litoporus sp.n. Br16-153. IMG_1520 Catuaba

BRAZIL: Acre, Rio Branco, Fazenda Experimental Catuaba (10.08°S, 67.625°W), 225 m a.s.l.



Litoporus curimagua Huber, 2020. IMG_3086 Yurubi NP

VENEZUELA: Yaracuy: Yurubi National Park (10.4913°N, 68.6564°W), 140 m a.s.l.



Litoporus dimona Huber, 2000. IMG_2064 Res Ducke
BRAZIL: Amazonas, Manaus, Reserva Ducke (2.932°S, 59.970°W), 80 m a.s.l.



Litoporus dimona Huber, 2000. IMG_2192 near Caverna do Moroaga
BRAZIL: Amazonas, Presidente Figueiredo, Maroaga Cave and surrounding forest (2.050°S, 59.972°W), 110-150 m a.s.l.



Litoporus iguassuensis Mello-Leitão, 1918. DSCF0140 Guapiacu
BRAZIL: RJ: Cachoeiras de Macacu, Reserva Ecol. Guapiaçú (22°24.4'-25.3'S, 42°44.2'-44.3'W), 140-280 m a.s.l.



Litoporus uncatus (Simon, 1893). IMG_1998 Tabatinga
BRAZIL: Amazonas, forest near Tabatinga (4.244°S, 69.92-69.93°W), 90 m a.s.l.

***Mecolaesthus* Simon, 1893**

Mecolaesthus cornutus Huber, 2000. IMG_7244 near Escagüey
VENEZUELA: Mérida: near Escagüey, NE Mérida (8.6918°N, 70.9950°W), 2220 m a.s.l.



Mecolaesthus cornutus Huber, 2000. IMG_7481 Monte Zerpa
VENEZUELA: Mérida: Monte Zerpa, forest above La Hechicera (8.634°N, 71.163°W – 8.639°N, 71.167°W), 2050-2180 m a.s.l.



Mecolaesthus fallax Huber, 2020. IMG_7049 Laguna Negra
VENEZUELA: Trujillo: near Boconó, Laguna Negra (9.3054°N, 70.1752°W), 1870 m a.s.l.



Mecolaesthus fallax Huber, 2020. IMG_7065 Laguna Negra
VENEZUELA: Trujillo: near Boconó, Laguna Negra (9.3054°N, 70.1752°W), 1870 m a.s.l.



Mecolaesthus grandis (González-Sponga, 2009). IMG_6028 El Limon
 VENEZUELA: Vargas: El Limón, above road Colonia Tovar-Puerto Cruz (10.4566°N, 67.2548°W), 1535
 m a.s.l.



Mecolaesthus limon Huber, 2020. IMG_3572 El Limón
 VENEZUELA: Vargas: El Limón, 'site 2' (10.4774°N, 67.2819°W), 1235 m a.s.l.



Mecolaesthus longissimus Simon, 1893. IMG_3423 Henri Pittier La Cumbre
VENEZUELA: Aragua: Henri Pittier National Park, forest near La Cumbre (10.3575°N, 67.5771°W),
1450 m a.s.l.



Mecolaesthus longissimus Simon, 1893. IMG_6105 Tovar
VENEZUELA: Aragua: between Colonia Tovar and El Junquito (10.4230°N, 67.2381°W), 1960 m a.s.l.



Mecolaesthus multidenticulatus (González-Sponga, 2003). IMG_6729 E Curimagua
VENEZUELA: Falcón: Sierra de San Luis, E Curimagua (11.1748°N, 69.6273°W), 960 m a.s.l.



Mecolaesthus multidenticulatus (González-Sponga, 2003). IMG_6734 E Curimagua
VENEZUELA: Falcón: Sierra de San Luis, E Curimagua (11.1748°N, 69.6273°W), 960 m a.s.l.



Mecolaesthus niquitanus (González-Sponga, 2011). IMG_7067 Laguna Negra
VENEZUELA: Trujillo: near Boconó, Laguna Negra (9.3054°N, 70.1752°W), 1870 m a.s.l.



Mecolaesthus piedras Huber, 2020. IMG_2210 Las Piedras
VENEZUELA: Mérida: Las Piedras, 'site 1' (8.8939°N, 70.6448°W), 1710 m a.s.l.



Mecolaesthus pusillus Huber, 2020. IMG_7548 Puerto Colombia
VENEZUELA: Aragua: Puerto Colombia (10.5025°N, 67.6057°W), 25 m a.s.l.



Mecolaesthus pusillus Huber, 2020. IMG_7589 Maracay-Puerto Colombia
VENEZUELA: Aragua: between Maracay and Puerto Colombia (10.4304°N, 67.5998°W), 380 m a.s.l.



Mecolaesthus trampa Huber, 2020. IMG_2452 Pregonero La Trampa
 VENEZUELA: Táchira: SE Pregonero, forest near La Trampa (7.9236°N, 71.7152°W), 1300 m a.s.l.



Mecolaesthus yawaperi Huber, 2000. IMG_2158 Res Ducke
 BRAZIL: Amazonas, Manaus, Reserva Ducke (2.932°S, 59.970°W), 80 m a.s.l.

***Meraha* Huber, 2018**



Meraha kipungit (Huber, 2016). IMG_3777 Poring
MALAYSIA-BORNEO: *Sabah*: Mt. Kinabalu, Poring Hot Springs, forest near beginning of Kipungit Trail
(6.048°N, 116.706°E), 450 m a.s.l.



Meraha krabi (Huber, 2016). IMG_6686 Phanombencha
THAILAND: *Krabi*: Khao Phanom Bencha N.P., trails near headquarters (8°14.1'N, 98°55.1'E), 150-300
m a.s.l.



Meraha krabi (Huber, 2016). IMG_6687 Phanombencha
THAILAND: *Krabi*: Khao Phanom Bencha N.P., trails near headquarters (8°14.1'N, 98°55.1'E), 150-300
m a.s.l.



Meraha narathiwat (Huber, 2016). IMG_9044 Barisan
INDONESIA: Sumatra, Lampung, Bukit Barisan (5.528°S, 104.424°E), 550-600 m a.s.l.

***Mesabolivar* González-Sponga, 1998**



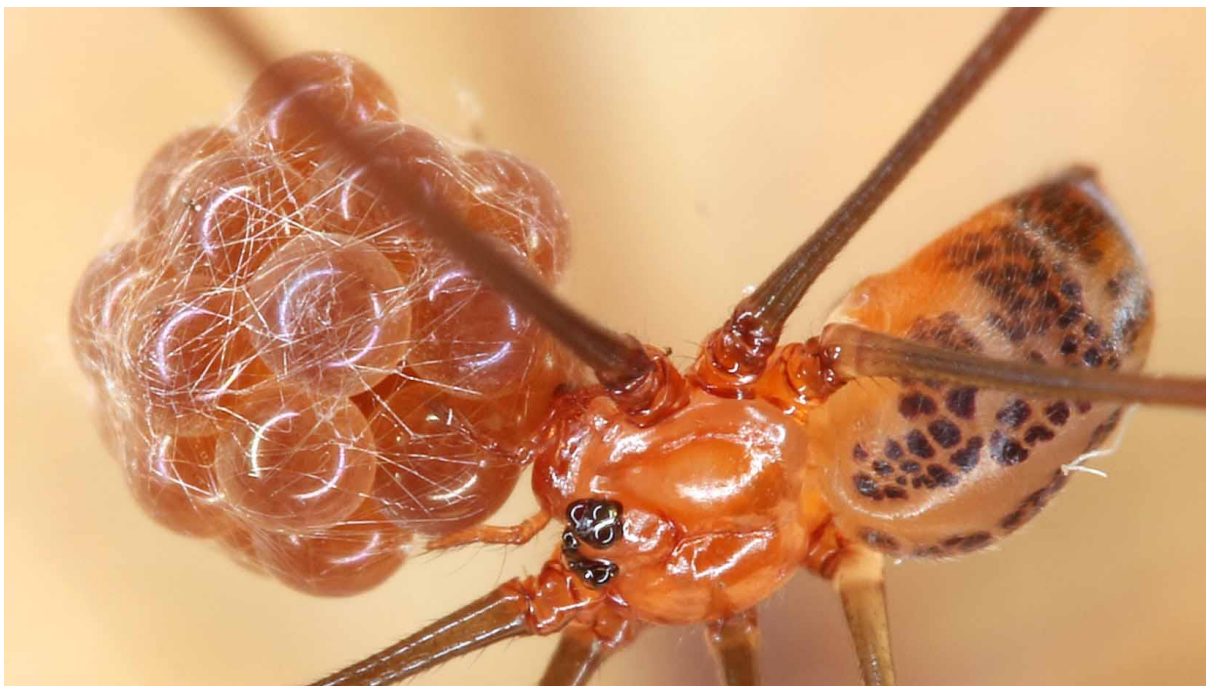
Mesabolivar acrensis Huber, 2018. IMG_1573 Catuaba
BRAZIL: Acre, Rio Branco, Fazenda Experimental Catuaba (10.08°S, 67.625°W), 225 m a.s.l.



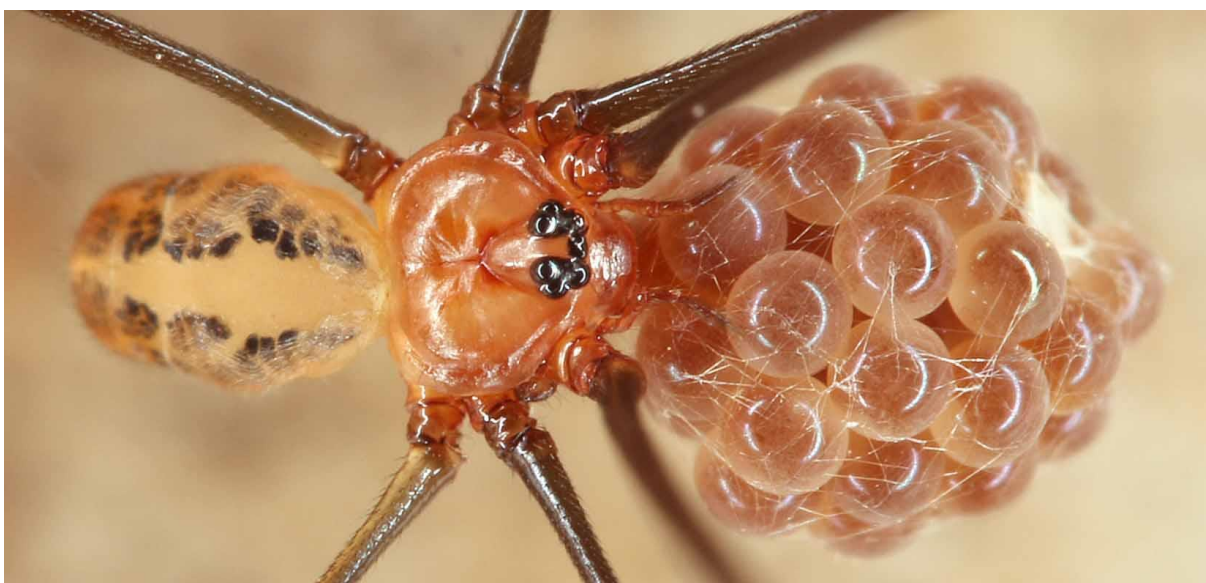
Mesabolivar amazonicus Huber, 2018. IMG_1179 Humaitá
BRAZIL: Acre, Rio Branco, Reserva Florestal Humaitá (9.749°S, 67.666°W), 180 m a.s.l.



Mesabolivar argentinensis (Mello-Leitão, 1938). IMG_7895 Nono
ARGENTINA: Córdoba Province, ~5 km E Nono (31.7982°S, 64.9515°W), 995 m a.s.l.



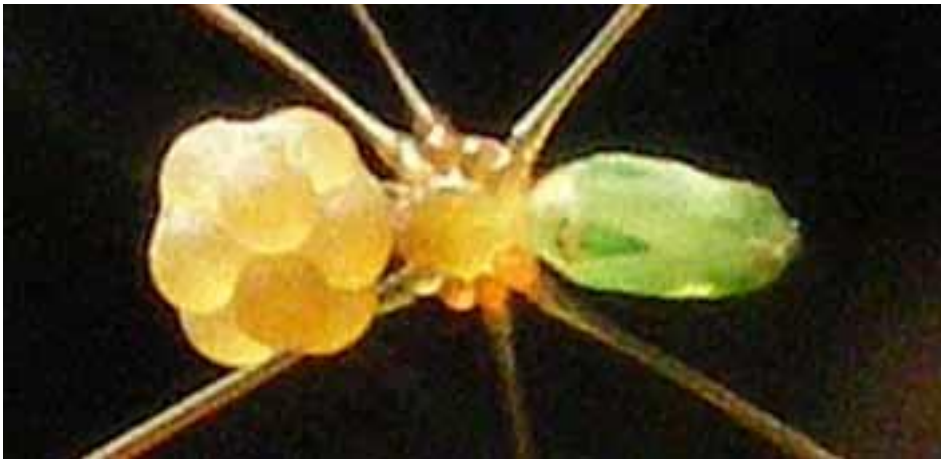
Mesabolivar aurantiacus (Mello-Leitão, 1930). IMG_0729 Macapá
BRAZIL: Amapá, forest SW Macapá, 'site 4' (0.057°S, 51.234°W), 25 m a.s.l.



Mesabolivar aurantiacus (Mello-Leitão, 1930). IMG_1154 Humaitá
BRAZIL: Acre, Rio Branco, Reserva Florestal Humaitá (9.749°S, 67.666°W), 180 m a.s.l.



Mesabolivar aurantiacus (Mello-Leitão, 1930). IMG_2124 Res Ducke
BRAZIL: Amazonas, Manaus, Reserva Ducke (2.932°S, 59.970°W), 80 m a.s.l.



Mesabolivar azureus (Badcock & Oxon, 1932). DSCF0150 Guapiacu
BRAZIL: RJ: Cachoeiras de Macacu, Reserva Ecol. Guapiaçú (22°24.3'S, 42°44.1'W), ~300-400 m a.s.l.



Mesabolivar baianus Huber, 2018. DSCF0163 Pau Brasil
 BRAZIL: BA: Parque Nacional do Pau Brasil, site 1 (16°28.2'S, 39°16.8'W), ~65 m a.s.l.



Mesabolivar sp.n. Br14-59. IMG_4671 Serra Geral 1000m
 BRAZIL: Santa Catarina, Serra Geral National Park, forest along road at ~1000 m a.s.l. (29.179°S, 50.024°W)



Mesabolivar sp.n. Br14-67. IMG_4736 Serra Geral headquarters
 BRAZIL: Santa Catarina, Aparados da Serra National Park, forest above Itaimbezinho Canyon, near headquarters (29.159°S, 50.079°W), 940 m a.s.l.



Mesabolivar sp.n. Br16-227. IMG_2243 near Caverna do Moroaga
 BRAZIL: Amazonas, Presidente Figueiredo, Maroaga Cave and surrounding forest (2.050°S, 59.972°W), 110-150 m a.s.l.



Mesabolivar buraquinho Huber, 2018. IMG_7521 near Murici
BRAZIL: Alagoas, near Murici, Estação Ecológica de Murici (9°14.8'S, 35°50.3'W), 350-400 m a.s.l.



Mesabolivar buraquinho Huber, 2018. IMG_8228 Buraquinho
BRAZIL: Paraíba, Jardim Botânico Benjamin Maranhão, "Mata do Buraquinho" (7°08.31'S, 34°51.46'W), 30 m a.s.l.



Mesabolivar caipora Huber, 2015. IMG_7464 Serra da Itabaiana
BRAZIL: Sergipe, Parque Nacional de Itabaiana (10°45.8'-46.0'S, 37°20.4'W), 170-220 m a.s.l.



Mesabolivar cavicelatus Machado et al., 2007. IMG_5170 Penedo
BRAZIL: Rio de Janeiro Prov., ~4 km NW Penedo (22°24,5'S, 44°33,0'-33,4'W), forest along river, 700-770 m a.s.l.



Mesabolivar chapeco Huber, 2018. IMG_4860 Chapeco NF
BRAZIL: Santa Catarina, Chapecó National Forest (27.103°S, 52.779°W), 620 m a.s.l.



Mesabolivar chapeco Huber, 2018. IMG_4872 Chapeco NF
BRAZIL: Santa Catarina, Chapecó National Forest (27.103°S, 52.779°W), 620 m a.s.l.



Mesabolivar charrua Machado et al. 2013. IMG_4820 Canela FR
BRAZIL: Rio Grande do Sul, Canela National Forest (29.321°S, 50.818°W), 790 m a.s.l.



Mesabolivar constrictus Huber, 2018. IMG_4279 Tres Barras NF
BRAZIL: Santa Catarina, Três Barras National Forest (26.242°S, 50.301°W), 800 m a.s.l.



Mesabolivar cyaneotaeniatus (Keyserling, 1891). DSCF0278 Guapiacu
BRAZIL: RJ: Cachoeiras de Macacu, Reserva Ecol. Guapiaçú (22°24.3'S, 42°44.1'W), ~300-400 m a.s.l.



Mesabolivar cyaneotaeniatus (Keyserling, 1891). IMG_4124 St Hilaire-L-NP-Mata-Atl
BRAZIL: Parana, Saint-Hilaire/Lange National Park, forest above Hotel Mata Atlântica (25.670°S, 48.600°W), ~200-300 m a.s.l.



Mesabolivar difficilis (Mello-Leitão, 1918). DSCF0244 Rio das Pedras
BRAZIL: RJ: Reserva Ecológica Rio das Pedras (22°59.5'S, 44°06.0'W), 50 m a.s.l.



Mesabolivar eberhardi Huber, 2000. IMG_6234 La Llovizna
VENEZUELA: Bolívar: Ciudad Guayana, Parque La Llovizna (8.3130°N, 62.6724°W), 50 m a.s.l.



Mesabolivar eberhardi Huber, 2000. IMG_7184 Bocono-Burbusay
VENEZUELA: Trujillo: between Boconó and Burbusay (9.3945°N, 70.2674°W), 1820 m a.s.l.



Mesabolivar giupponii Huber, 2015. DSCF0183 Guapiacu
BRAZIL: RJ: Cachoeiras de Macacu, Reserva Ecol. Guapiaçu (22°24.3'S, 42°44.1'W), ~300-400 m a.s.l.



Mesabolivar goitaca Huber, 2015. IMG_5047 Penedo
 BRAZIL: Rio de Janeiro Prov., ~4 km NW Penedo (22°24,5'S, 44°33,0'-33,4'W), forest along river, 700-770 m a.s.l.



Mesabolivar itajai Huber, 2018. IMG_4284 Itajai NP
 BRAZIL: Santa Catarina, Itajaí National Park (27.065°S, 49.098°W), 3a Vargem Trail, ~450 m a.s.l.



Mesabolivar jamari Huber, 2018. IMG_1363 Jamari
BRAZIL: Rondônia, Floresta Nacional de Jamari, 'sites 2 & 3' (9.22°S, 63.93°W - 9.26°S, 63.92°W), 110 m a.s.l.



Mesabolivar kaingang Huber, 2018. IMG_4228 St Hilaire-L-NP-Mata-Atl
BRAZIL: Parana, Saint-Hilaire/Lange National Park, forest above Hotel Mata Atlântica (25.670°S, 48.600°W), ~200-300 m a.s.l.



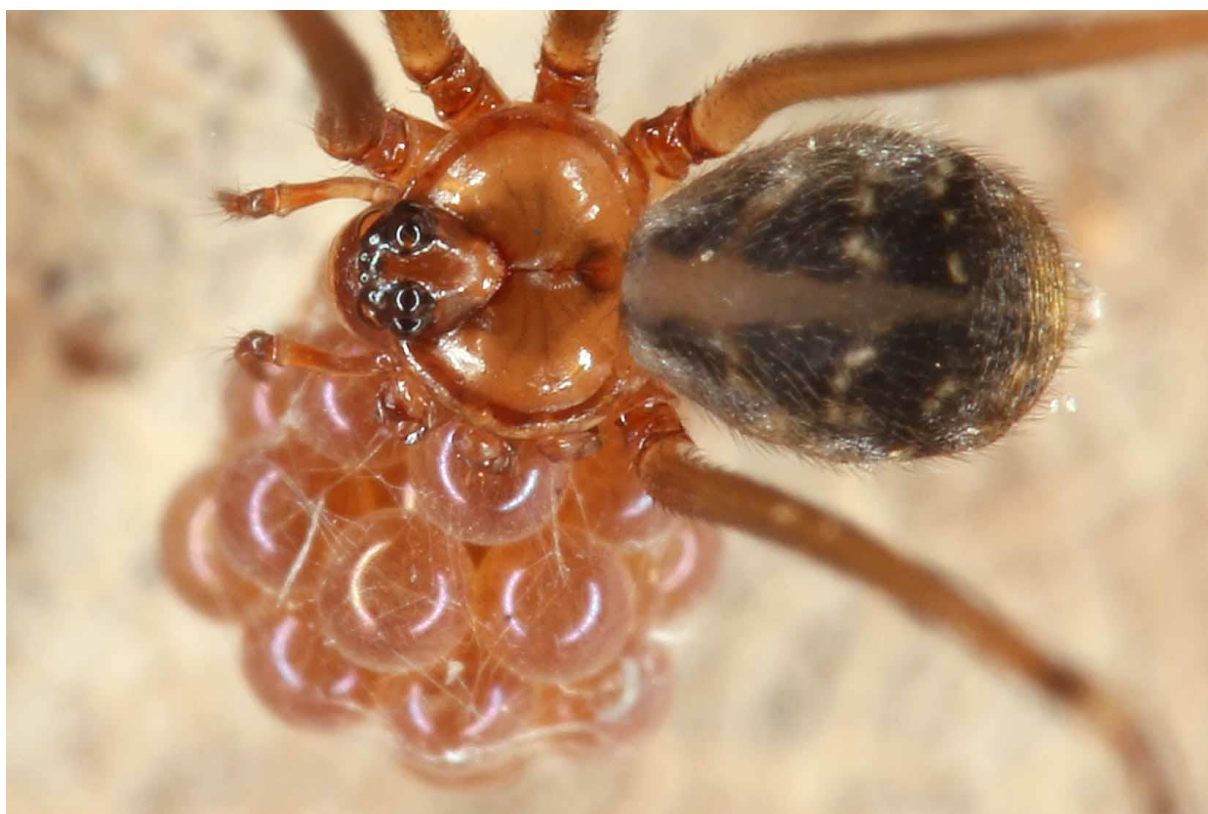
Mesabolivar kathrinae Huber, 2015. IMG_7587 Est Ecol Murici
BRAZIL: Alagoas, near Murici, Estação Ecológica de Murici (9°14.8'S, 35°50.3'W), 350-400 m a.s.l.



Mesabolivar kathrinae Huber, 2015. IMG_8249 Buraquinho
BRAZIL: Paraíba, Jardim Botânico Benjamin Maranhão, "Mata do Buraquinho" (7°08.31'S, 34°51.46'W), 30 m a.s.l.



Mesabolivar maraba Huber, 2018. IMG_0480 near Marabá
BRAZIL: Pará, Marabá, forest near road, 'site 1' (5.414°S, 49.074°W), 140 m a.s.l.



Mesabolivar maraba Huber, 2018. IMG_0584 near Marabá
BRAZIL: Pará, Marabá, forest near road, 'site 1' (5.414°S, 49.074°W), 140 m a.s.l.



Mesabolivar niteroi Huber, 2018. IMG_4130 St Hilaire-L-NP-Mata-Atl
BRAZIL: Parana, Saint-Hilaire/Lange National Park, forest above Hotel Mata Atlântica (25.670°S, 48.600°W), ~200-300 m a.s.l.



Mesabolivar niteroi Huber, 2018. IMG_4213 St Hilaire-L-NP-Mata-Atl
BRAZIL: Parana, Saint-Hilaire/Lange National Park, forest above Hotel Mata Atlântica (25.670°S, 48.600°W), ~200-300 m a.s.l.



Mesabolivar rudilapsi Machado et al., 2007. IMG_4059 St Hilaire-L-NP-Niteroi
BRAZIL: Parana, Saint-Hilaire/Lange National Park, forest along river above Fazenda Niteroi (25.657°S, 48.601°W), ~100 m a.s.l.



Mesabolivar saci Huber, 2018. IMG_4487 Sao Joaquim
BRAZIL: Santa Catarina, São Joaquim National Park (28.034°S, 49.611°W), fern forest along small stream, ~1100-1200 m a.s.l.



Mesabolivar saci Huber, 2018. IMG_4496 Sao Joaquim
BRAZIL: Santa Catarina, São Joaquim National Park (28.034°S, 49.611°W), fern forest along small stream, ~1100-1200 m a.s.l.



Mesabolivar sepitus Huber, 2018. IMG_4522 Serra Geral NP Churriado
BRAZIL: Santa Catarina, Serra Geral National Park, Churriado Canyon (29.137°S, 49.953°W to 29.130°S, 49.965°W), forest near river, 150-250 m a.s.l.



Mesabolivar sepitus Huber, 2018. IMG_4533 Serra Geral NP Churriado
BRAZIL: Santa Catarina, Serra Geral National Park, Churriado Canyon (29.137°S, 49.953°W to 29.130°S, 49.965°W), forest near river, 150-250 m a.s.l.



Mesabolivar sepitus Huber, 2018. IMG_4551 Serra Geral NP Churriado
BRAZIL: Santa Catarina, Serra Geral National Park, Churriado Canyon (29.137°S, 49.953°W to 29.130°S, 49.965°W), forest near river, 150-250 m a.s.l.



Mesabolivar sepitus Huber, 2018. IMG_4617 Serra Geral 700m
BRAZIL: Santa Catarina, Serra Geral National Park, forest along road at ~700 m a.s.l. (29.182°S, 50.008°W)



Mesabolivar serrapelada Huber, 2018. IMG_0640 Serra Pelada
BRAZIL: Pará, Serra Pelada, (5.931°S, 49.674°W), 140 m a.s.l.



Mesabolivar spinulosus (Mello-Leitão, 1939). IMG_8349 Maxaranguape
BRAZIL: Rio Grande do Norte, degraded forest along Maxaranguape River (5°29.61'S, 35°17.09'W), 20 m a.s.l.



Mesabolivar tapajos Huber, 2018. IMG_0933 Tapajos km 67
BRAZIL: Pará, Floresta Nacional de Tapajós, km 67, 'site 2' (2.875°S, 54.941°W), 190 m a.s.l.



Mesabolivar turvo Huber, 2018. IMG_4233 Irati FR
BRAZIL: Parana, Irati Forest Reserve (25.362°S, 50.584°W), 850 m a.s.l.



Mesabolivar turvo Huber, 2018. IMG_4938 Turvo NP
BRAZIL: Rio Grande do Sul, Turvo National Park, Lagoas Trail near headquarters (27.231°S, 53.849°W), 400 m a.s.l.



Mesabolivar turvo Huber, 2018. IMG_4940 Turvo NP
 BRAZIL: Rio Grande do Sul, Turvo National Park, Lagoas Trail near headquarters (27.231°S, 53.849°W), 400 m a.s.l.



Mesabolivar yucuma Huber, 2018. IMG_4897 Turvo NP
 BRAZIL: Rio Grande do Sul, Turvo National Park, near Salto do Yucumã (27.136°S, 53.882°W), 175 m a.s.l.

***Metagonia* Simon, 1893**

Metagonia amica Gertsch, 1971. IMG_1414 Cueva El Jobo
MEXICO: San Luis Potosí, ~5 km NE Xilitla, Cueva El Jobo (21.4230°N, 98.9519°W), 435 m a.s.l.



Metagonia argentinensis Mello-Leitão, 1945. IMG_4815 Canela
BRAZIL: Rio Grande do Sul, Canela, parking lot of Pousada Canela (29.3593°S, 50.8135°W), 845 m a.s.l.



Metagonia argentinensis Mello-Leitão, 1945. IMG_4855 Passo Fundo
BRAZIL: Rio Grande do Sul, Passo Fundo National Forest (28.289°S, 52.187°W), 700 m a.s.l.



Metagonia bellavista Gertsch & Peck, 1992. IMG_9393 Cueva Finca Kastdalen
GALÁPAGOS: Santa Cruz: Bellavista, cave at Finca Kastdalen (0.6850°S, 90.3164°W), 230 m a.s.l.



Metagonia beni Huber, 2000. IMG_0902 Tapajos km 67
BRAZIL: Pará, Floresta Nacional de Tapajós, km 67, 'site 2' (2.875°S, 54.941°W), 190 m a.s.l.



Metagonia beni Huber, 2000. IMG_1115 Humaitá
BRAZIL: Acre, Rio Branco, Reserva Florestal Humaitá (9.749°S, 67.666°W), 180 m a.s.l.



Metagonia beni Huber, 2000. IMG_1645 Cruzeiro do Sul
BRAZIL: Acre, Cruzeiro do Sul, forest near airport (7.596°S, 72.767°W), 200 m a.s.l.



Metagonia beni Huber, 2000. IMG_2063 Res Ducke
BRAZIL: Amazonas, Manaus, Reserva Ducke (2.932°S, 59.970°W), 80 m a.s.l.



Metagonia beni Huber, 2000. IMG_2287 near Caverna do Moroaga
BRAZIL: Amazonas, Presidente Figueiredo, Maroaga Cave and surrounding forest (2.050°S, 59.972°W), 110-150 m a.s.l.



Metagonia beni Huber, 2000. IMG_6302 La Neverita
VENEZUELA: Bolívar: La Neverita (8.0970°N, 62.6727°W), 225 m a.s.l.



Metagonia beni Huber, 2000(?). DSCF0018 Guapiacu

BRAZIL: RJ: Cachoeiras de Macacu, Reserva Ecol. Guapiaçú (22°24.3'S, 42°44.1'W), ~300-400 m a.s.l.



Metagonia beni Huber, 2000(?). IMG_4435 Itajai

BRAZIL: Santa Catarina, Itajaí National Park (27.049-27.058°S, 49.083-49.088°W), near station and Chuva Trail, night collecting, 300 m a.s.l.



Metagonia beni Huber, 2000(?). IMG_4907 Turvo NP
BRAZIL: Rio Grande do Sul, Turvo National Park, forest near Pousadas das Fontes (27.256°S,
53.877°W), 470 m a.s.l.



Metagonia beni Huber, 2000(?). IMG_4910 Turvo NP
BRAZIL: Rio Grande do Sul, Turvo National Park, forest near Pousadas das Fontes (27.256°S,
53.877°W), 470 m a.s.l.



Metagonia beni Huber, 2000(?). IMG_4994 Iguacu NP
BRAZIL: Parana, Foz do Iguaçu National Park (25.63-25.69°S, 54.43-54.44°W), 200-230 m a.s.l.



Metagonia beni Huber, 2000(?). IMG_4995 Iguacu NP
BRAZIL: Parana, Foz do Iguaçu National Park (25.63-25.69°S, 54.43-54.44°W), 200-230 m a.s.l.



Metagonia beni Huber, 2000(?). IMG_5139 Penedo

BRAZIL: Rio de Janeiro Prov., ~4 km NW Penedo (22°24,5'S, 44°33,0'-33,4'W), forest along river, 700-770 m a.s.l.



Metagonia beni Huber, 2000(?). IMG_7288 Santa Teresinha

BRAZIL: Bahia, near Santa Teresinha, Serra da Jibóia, near road (12°51.05'S, 39°28.73'W), 700 m a.s.l.



Metagonia bifida Simon, 1893. IMG_5065 Penedo

BRAZIL: Rio de Janeiro Prov., ~4 km NW Penedo (22°24,5'S, 44°33,0'-33,4'W), forest along river, 700-770 m a.s.l.



Metagonia sp.n. Br07-1. DSCN1914 Penedo

BRAZIL: Rio de Janeiro Prov., ~4 km NW Penedo (22°24,5'S, 44°33,0'-33,4'W), forest along river, 700-770 m a.s.l.



Metagonia sp.n. Br07-1. IMG_5118 Penedo

BRAZIL: Rio de Janeiro Prov., ~4 km NW Penedo (22°24,5'S, 44°33,0'-33,4'W), forest along river, 700-770 m a.s.l.



Metagonia sp.n. Br07-1. IMG_5236 Penedo

BRAZIL: Rio de Janeiro Prov., ~4 km NW Penedo (22°24,5'S, 44°33,0'-33,4'W), forest along river, 700-770 m a.s.l.



Metagonia sp.n. Br11-48. IMG_0591 near Marabá
BRAZIL: Pará, Marabá, forest near road, 'site 1' (5.414°S, 49.074°W), 140 m a.s.l.



Metagonia sp.n. Br11-48. IMG_0604 near Marabá
BRAZIL: Pará, Marabá, forest near road, 'site 1' (5.414°S, 49.074°W), 140 m a.s.l.



Metagonia sp.n. Br11-48. IMG_0820 Macapá Fazendinha
BRAZIL: Amapá, forest SW Macapá, Área de Proteção Ambiental da Fazendinha, 'site 2' (0.051°S, 51.123°W), 20 m a.s.l.



Metagonia sp.n. Br11-107. IMG_7473 Serra da Itabaiana
BRAZIL: Sergipe, Parque Nacional de Itabaiana (10°45.8'-46.0'S, 37°20.4'W), 170-220 m a.s.l.



Metagonia sp.n. Br11-107. IMG_7601 Est Ecol Murici
BRAZIL: Alagoas, near Murici, Estação Ecológica de Murici (9°14.8'S, 35°50.3'W), 350-400 m a.s.l.



Metagonia sp.n. Br11-107. IMG_7907 nr Cachoeira da Gruta
BRAZIL: Pernambuco, near Bonito, forest near Cachoeira da Gruta (8°32.8'S, 35°42.7'W), 380 m a.s.l.



Metagonia sp.n. Br11-107. IMG_8047 Sao Vicente Ferrer
BRAZIL: Pernambuco, near São Vicente Ferrer, 'site 1', forest near road (7°37.3'S, 35°27.8'-28.0'W), 400-450 m a.s.l.



Metagonia sp.n. Br15-101. IMG_8009 Sao Vicente Ferrer
BRAZIL: Pernambuco, near São Vicente Ferrer, 'site 1', forest edge with banana near road (7°37.3'S, 35°27.8'-28.0'W), 400-450 m a.s.l.



Metagonia sp.n. Br16-180. IMG_1590 Cruzeiro do Sul
BRAZIL: Acre, Cruzeiro do Sul, forest near airport (7.596°S, 72.767°W), 200 m a.s.l.



Metagonia sp.n. Br16-180. IMG_1768 Tabatinga
BRAZIL: Amazonas, forest near Tabatinga (4.244°S, 69.92-69.93°W), 90 m a.s.l.



Metagonia sp.n. Br16-184. IMG_1690 Fazenda Colorado
BRAZIL: Amazonas, Guajará, forest at Fazenda Colorado, 'site 2' (7.528°S, 72.655°W), 210-240 m a.s.l.



Metagonia sp.n. Br16-205. IMG_1756 Tabatinga

BRAZIL: Amazonas, forest near Tabatinga (4.244°S, 69.92-69.93°W), 90 m a.s.l.



Metagonia sp.n. Br16-205. IMG_1760 Tabatinga

BRAZIL: Amazonas, forest near Tabatinga (4.244°S, 69.92-69.93°W), 90 m a.s.l.



Metagonia sp.n. Br16-216. IMG_2029 Res Ducke

BRAZIL: Amazonas, Manaus, Reserva Ducke (2.932°S, 59.970°W), 80 m a.s.l.



Metagonia sp.n. Br16-216. IMG_2211 near Caverna do Moroaga
BRAZIL: Amazonas, Presidente Figueiredo, Maroaga Cave and surrounding forest (2.050°S,
59.972°W), 110-150 m a.s.l.



Metagonia caudata O. Pickard-Cambridge, 1895. IMG_1365 near Cueva Linda
MEXICO: San Luis Potosí, ~2 km NE Tamapatz, forest near Cueva Linda (21.5836°N, 99.0654°W), 585
m a.s.l.



Metagonia caudata O. Pickard-Cambridge, 1895. IMG_1367 near Cueva Linda
MEXICO: *San Luis Potosí*, ~2 km NE Tamapatz, forest near Cueva Linda (21.5836°N, 99.0654°W), 585 m a.s.l.



Metagonia caudata O. Pickard-Cambridge, 1895. IMG_2004 N Matias Romero
MEXICO: *Oaxaca*, ~7 km N Matías Romero (16.9390°N, 95.0065°W), 190 m a.s.l.



Metagonia conica (Simon, 1893). IMG_5864 El Avila
VENEZUELA: *Capital*: Parque Nacional El Avila, between Sabas Nieves and La Silla (10.5288°N, 66.8546°W), 1850 m a.s.l.



Metagonia conica (Simon, 1893). IMG_6011 El Limon
VENEZUELA: Vargas: El Limón, above road Colonia Tovar-Puerto Cruz (10.4566°N, 67.2548°W), 1535 m a.s.l.



Metagonia conica (Simon, 1893). IMG_6888 Barquisimeto-Bocono
 VENEZUELA: Lara: between Barquisimeto and Boconó (9.5906°N, 69.8343°W), 1370 m a.s.l.



Metagonia delicata (O. Pickard-Cambridge, 1895). IMG_1377 near Cueva Linda
 MEXICO: San Luis Potosí, ~2 km NE Tamapatz, forest near Cueva Linda (21.5836°N, 99.0654°W), 585 m a.s.l.



Metagonia delicata (O. Pickard-Cambridge, 1895). IMG_2053 S Maria Lombardo
MEXICO: Oaxaca, ~4 km S María Lombardo (17.4112°N, 95.4236°W), 150 m a.s.l.



Metagonia delicata (O. Pickard-Cambridge, 1895)(?). IMG_0837 Macapá Fazendinha
BRAZIL: Amapá, forest SW Macapá, Área de Proteção Ambiental da Fazendinha, 'site 2' (0.051°S,
51.123°W), 20 m a.s.l.



Metagonia sp.n. Gal3. IMG_9300 Cueva Gallardo

GALÁPAGOS: Santa Cruz: Bellavista, Cueva Gallardo (0.6947°S, 90.3168°W), 220 m a.s.l.



Metagonia sp.n. Gal33. IMG_9611 cave 2 S Muro Lagrimas

GALÁPAGOS: Isabela: unnamed cave 1.3 km SW Tunel del Estero (0.9676°S, 90.9993°W), 20 m a.s.l.



Metagonia globulosa Huber, 2000(?). IMG_0523 near Marabá
BRAZIL: Pará, Marabá, forest near road, 'site 2' (5.360°S, 49.058°W), 120 m a.s.l.



Metagonia globulosa Huber, 2000(?).IMG_0643 near Marabá
BRAZIL: Pará, Marabá, forest near road, 'site 2' (5.360°S, 49.058°W), 120 m a.s.l.



Metagonia guttata Huber, 2020. IMG_3487 El Limón
VENEZUELA: Vargas: El Limón, 'site 1' (10.4788°N, 67.3010°W), 600 m a.s.l.



Metagonia guttata Huber, 2020. IMG_3513 El Limón
VENEZUELA: Vargas: El Limón, 'site 1' (10.4788°N, 67.3010°W), 600 m a.s.l.



Metagonia guttata Huber, 2020. IMG_6679 E Curimagua
VENEZUELA: Falcón: Sierra de San Luis, E Curimagua (11.1748°N, 69.6273°W), 960 m a.s.l.



Metagonia guttata Huber, 2020. IMG_6817 Coro Barquisimeto
VENEZUELA: Lara: between Coro and Barquisimeto, El Rodeo (10.7240°N, 69.3008°W), 400 m a.s.l.



Metagonia latigo Huber, 2020. IMG_2987 Santa Cruz de la Alegria
VENEZUELA: Falcón: forest near Santa Cruz de La Alegría (10.8795°N, 68.4949°W), 100 m a.s.l.



Metagonia latigo Huber, 2020. IMG_3078 Yurubi
VENEZUELA: Yaracuy: Yurubi National Park (10.4913°N, 68.6564°W), 140 m a.s.l.



Metagonia latigo Huber, 2020. IMG_3512 El Limón
VENEZUELA: Vargas: El Limón, 'site 1' (10.4788°N, 67.3010°W), 600 m a.s.l.



Metagonia latigo Huber, 2020. IMG_6529 Cerro Santa Ana
VENEZUELA: Falcón: Península de Paraguaná, Cerro Santa Ana (11.8177°N, 69.9468°W), 480 m a.s.l.



Metagonia latigo Huber, 2020. IMG_6531 Cerro Santa Ana
 VENEZUELA: Falcón: Península de Paraguaná, Cerro Santa Ana (11.8177°N, 69.9468°W), 480 m a.s.l.



Metagonia latigo Huber, 2020. IMG_6696 E Curimagua
 VENEZUELA: Falcón: Sierra de San Luis, E Curimagua (11.1748°N, 69.6273°W), 960 m a.s.l.



Metagonia latigo Huber, 2020. IMG_6700 E Curimagua
 VENEZUELA: Falcón: Sierra de San Luis, E Curimagua (11.1748°N, 69.6273°W), 960 m a.s.l.



Metagonia latigo Huber, 2020. IMG_7623 Maracay-Puerto Colombia
 VENEZUELA: Aragua: between Maracay and Puerto Colombia (10.4304°N, 67.5998°W), 380 m a.s.l.



Metagonia sp.n. MACN79. IMG_8309 S San Pedro
 ARGENTINA: Jujuy Province, S San Pedro (24.2637°S, 64.8959°W), 635 m a.s.l.



Metagonia sp.n. MACN79. IMG_8317 S San Pedro
ARGENTINA: Jujuy Province, S San Pedro (24.2637°S, 64.8959°W), 635 m a.s.l.



Metagonia sp.n. MACN79. IMG_8604 Cabra Corral
ARGENTINA: Salta Province, Cabra Corral, 'site 4', W end of bridge (25.2837°S, 65.3939°W), 1050 m a.s.l.



Metagonia sp.n. MACN79. IMG_8715 Cabra Corral

ARGENTINA: Salta Province, Cabra Corral, 'site 4', W end of bridge (25.2837°S, 65.3939°W), 1050 m a.s.l.



Metagonia sp.n. MACN79. IMG_8766 S Alemania

ARGENTINA: Salta Province, ~1 km SW Alemania (25.6300°S, 65.6180°W), 1210 m a.s.l.



Metagonia sp.n. MACN79. IMG_8944 Chumbicha

ARGENTINA: Catamarca Province, ~5 km NW Chumbicha, near Balneario El Caolín, 'site 2' (28.8109°S, 66.2500°W), 640 m a.s.l.



Metagonia sp.n. MACN79. IMG_9028 Alta Gracia

ARGENTINA: Cordoba Province, ~6 km NW Alta Gracia (31.6307°S, 64.4894°W), 710 m a.s.l.



Metagonia mariguitarensis (González-Sponga, 1998). IMG_2981 Santa Cruz de la Alegria
VENEZUELA: Falcón: forest near Santa Cruz de La Alegría (10.8795°N, 68.4949°W), 100 m a.s.l.



Metagonia mariguitarensis (González-Sponga, 1998). IMG_6149 La Llovizna
VENEZUELA: Bolívar: Ciudad Guayana, Parque La Llovizna (8.3130°N, 62.6724°W), 50 m a.s.l.



Metagonia mariguitarens (González-Sponga, 1998). IMG_6155 La Llovizna
VENEZUELA: Bolívar: Ciudad Guayana, Parque La Llovizna (8.3130°N, 62.6724°W), 50 m a.s.l.



Metagonia mariguitarens (González-Sponga, 1998). IMG_6400 La Llovizna
VENEZUELA: Bolívar: Ciudad Guayana, Parque La Llovizna (8.3130°N, 62.6724°W), 50 m a.s.l.



Metagonia mariguitarensis (González-Sponga, 1998). IMG_6403 La Llovizna
 VENEZUELA: Bolívar: Ciudad Guayana, Parque La Llovizna (8.3130°N, 62.6724°W), 50 m a.s.l.



Metagonia sp.n. Mex103. IMG_0941 5km S Gomez Farias
 MEXICO: Tamaulipas, ~5 km S Gómez Farias, Nacimiento del Rio Frio (22.9898°N, 99.1499°W), 110 m
 a.s.l.



Metagonia sp.n. Mex103. IMG_1049 Cueva de los Alvarez
MEXICO: Tamaulipas, Gómez Farias, outside Cueva de los Alvarez (23.0445°N, 99.1622°W), 300 m a.s.l.



Metagonia pachona Gertsch, 1971. IMG_1173 Cueva El Pachon
MEXICO: Tamaulipas, Praxedis G. Guerrero, Cueva de El Pachon (22.6074°N, 99.0494°W), 220 m a.s.l.



Metagonia placida Gertsch, 1971. IMG_0816 Cueva de la Boca
MEXICO: Nuevo León, ~4 km E Santiago, Cueva de la Boca (25.4319°N, 100.1138°W), 530 m a.s.l.



Metagonia reederi Gertsch & Peck, 1992. IMG_9508 Cueva de Sucre
GALÁPAGOS: *Isabela*: Cueva de Sucre (0.8433°S, 91.0290°W), 355 m a.s.l.



Metagonia taruma Huber, 2000. DSC09570 Mata Sao Joao
BRAZIL: BA: Mata de São João, site 1 (12°28.3'S, 38°14.7'W), ~110 m a.s.l.



Metagonia taruma Huber, 2000. IMG_2283 near Caverna do Moroaga
BRAZIL: Amazonas, Presidente Figueiredo, Maroaga Cave and surrounding forest (2.050°S, 59.972°W), 110-150 m a.s.l.



Metagonia taruma Huber, 2000. IMG_7391 Mata de Crasto
BRAZIL: Sergipe, near Santa Luzia do Itanhy, Mata do Crasto (11°22.70'S, 37°25.10'W), 20 m a.s.l.



Metagonia taruma Huber, 2000. IMG_7455 Serra da Itabaiana
BRAZIL: Sergipe, Parque Nacional de Itabaiana (10°45.8'-46.0'S, 37°20.4'W), 170-220 m a.s.l.



Metagonia taruma Huber, 2000. IMG_8296 Guaribas
BRAZIL: Paraíba, near Rio Tinto, Reserva Biológica de Guaribas, 'site 1' (6°48.55'S, 35°05.21'W), 30 m a.s.l.



Metagonia taruma Huber, 2000. IMG_8320 Mata de Pipa
BRAZIL: Rio Grande do Norte, Parque Estadual Mata de Pipa, outside park boundaries (6°13.70'S, 35°04.01'W), 50 m a.s.l.



Metagonia tinaja Gertsch, 1971. IMG_1250 Cueva de los Sabinos
MEXICO: San Luis Potosí, ~12 km NE Ciudad Valles, Cueva de los Sabinos (22.0920°N, 98.9571°W),
240 m a.s.l.



Metagonia sp.n. Tri18-12. IMG_7763 Cerro Aripo
TRINIDAD AND TOBAGO: Trinidad, Cerro Aripo (10.709°N, 61.235°W – 10.715°N, 61.236°W), 560-630
m a.s.l.



Metagonia triocular (González-Sponga, 2011). IMG_3443 NE El Castano
 VENEZUELA: Aragua: Henri Pittier National Park, NE El Castaño (10.3475°N, 67.5850°W), 990 m a.s.l.

***Micromerys* Bradley, 1877**



Micromerys baiteta Huber, 2011. IMG_9429 Mokwam
 INDONESIA: West Papua, Arfak Mountains, forest above Mokwam (1.112°S, 133.911°E), 1600 m a.s.l.



Micromerys baiteta Huber, 2011. IMG_9488 Manokwari
 INDONESIA: West Papua, Manokwari, Gunung Meja (0.860°S, 134.084°E), 190 m a.s.l.

***Micropholcus* Deeleman-Reinhold & Prinsen, 1987**



Micropholcus agadir (Huber, 2011). IMG_5371 Paradise Valley
MOROCCO: Paradise Valley (30.588°N, 9.528°W), 305 m a.s.l.



Micropholcus sp.n. Br15-152. IMG_8383 Furna Feia
BRAZIL: Rio Grande do Norte, near Baraúna, Furna Feia cave (5°02.19'S, 37°33.62'W), 100 m a.s.l.



Micropholcus sp.n. Br16-23. IMG_0622 Serra Pelada
BRAZIL: Pará, Serra Pelada, (5.931°S, 49.674°W), 140 m a.s.l.



Micropholcus evaluna (Huber, Pérez & Baptista, 2005). IMG_3640 El Ávila NP
VENEZUELA: Miranda: El Ávila National Park, near La Julia, 'site 1' (10.5012°N, 66.8111°W), 960 m a.s.l.



Micropholcus fauroti (Simon, 1887). DSCF0011 Conakry
GUINEA: Conakry, on banana leaf (9°31-34'N, 13°39-41'W), ~50 m a.s.l.



Micropholcus fauroti (Simon, 1887). IMG_1755 Iligan
PHILIPPINES: Mindanao, Misamis Occidental Prov., Iligan (8.187°N, 124.166°E), 5 m a.s.l.



Micropholcus fauroti (Simon, 1887). IMG_2101 Naga
PHILIPPINES: Luzon, Camarines Sur Prov., Naga (13.624°N, 123.188°E), 10 m a.s.l.



Micropholcus sp.n. Om74. IMG_4354 Wadi Darbat
OMAN: Dhofar: Wadi Darbat (17.09°N, 54.45°E), 200 m a.s.l.



Micropholcus sp.n. Om74. IMG_4441 Qairoon Hairitti
OMAN: Dhofar: near Qairoon Hairitti (17.2600°N, 54.0808°E), 845 m a.s.l.



Micropholcus sp.n. Phi114. IMG_1435 CMU Faculty Hill
 PHILIPPINES: Mindanao, Bukidnon Prov., Central Mindanao Univ., Faculty Hill (7.853°N, 125.049°E),
 330 m a.s.l.



Micropholcus sp.n. Phi114. IMG_1698 San José
 PHILIPPINES: Mindanao, Bukidnon Prov., Barangay San Jose, Blue Water Cave (7.706°N, 125.032°E),
 200 m a.s.l.



Micropholcus delicatulus (Franganillo, 1930)(?). DSCF0311 Turquino
CUBA: Santiago de Cuba: Estación Biológica La Platica, forest near brook (20.009°N, 76.894°W), 830m a.s.l.



Micropholcus delicatulus (Franganillo, 1930)(?). DSCF0313 Turquino
CUBA: Santiago de Cuba: Estación Biológica La Platica, forest near station (20.012°N, 76.890°W), 920m a.s.l.



Micropholcus delicatulus (Franganillo, 1930)(?). DSCF0869 Vinales
CUBA: Pinar del Río: Viñales, forest at base of mogote, site 1 (22.622°N, 83.737°W), 150m a.s.l.



Micropholcus delicatulus (Franganillo, 1930)(?). DSCF9805 Turquino
CUBA: Santiago de Cuba: Estación Biológica La Platica, forest above station (20.010°N, 76.889°W),
920-960m a.s.l.

***Modisimus* Simon, 1893**



Modisimus boneti Gertsch, 1971. IMG_1206 Cueva El Pachon
MEXICO: Tamaulipas, Praxedis G. Guerrero, outside of Cueva de El Pachon (22.6074°N, 99.0494°W),
220 m a.s.l.



Modisimus boneti Gertsch, 1971. IMG_1212 Cueva La Florida
MEXICO: Tamaulipas, 1 km NW Praxedis G. Guerrero, Cueva La Florida (22.6184°N, 99.0596°W), 220 m a.s.l.



Modisimus chiapa Gertsch, 1977(?). IMG_1810 E Tlacolula
MEXICO: Oaxaca, ~2 km E Tlacolula (16.9464°N, 96.4505°W), 1660 m a.s.l.



Modisimus chiapa Gertsch, 1977(?).IMG_9773 10 km S Mezcala
MEXICO: Guerrero, ~10 km S Mezcala, Plan de Liebres (17.8461°N, 99.5762°W), 610 m a.s.l.



Modisimus sp.n. Cub12-2. DSCF0185 Turquino
CUBA: Santiago de Cuba: Estación Biológica La Platica, forest near brook (20.009°N, 76.894°W), 830m a.s.l.



Modisimus sp.n. Cub12-2. DSCN9786 Turquino

CUBA: Santiago de Cuba: Estación Biológica La Platica, forest near brook (20.009°N, 76.894°W), 830m a.s.l.



Modisimus sp.n. Cub12-2. DSCN0065 Baracoa

CUBA: Guantanamo: Baracoa, forest along Duaba river (20.332°N, 74.569°W), 60m a.s.l.



Modisimus sp.n. Cub12-17. DSCF0824 Vinales

CUBA: Pinar del Río: Viñales, Cueva del Cable (22.667°N, 83.707°W), 220m a.s.l.



Modisimus sp.n. Cub12-21. DSCF0794 Vinales

CUBA: Pinar del Río: Viñales, Cueva del Cable (22.667°N, 83.707°W), 220m a.s.l.



Modisimus sp.n. Cub12-34. DSCF0736 Vinales

CUBA: Pinar del Río: Viñales, forest at Las Maravillas de Viñales (22.562°N, 83.833°W), under rocks, 170m a.s.l.



Modisimus sp.n. Cub12-58. DSCF0513 Cubitas Savannah

CUBA: Camagüey: savanna S of Estación Limones-Tuabaquey (21.548°N, 77.778°W), 60m a.s.l.



Modisimus sp.n. Cub12-60. DSCF0454 Cubitas Hoyo de Bonet

CUBA: Camagüey: Sierra de Cubitas, Hoyo de Bonet (21.610°N, 77.784°W), bottom of doline, ~100m a.s.l.



Modisimus sp.n. Cub12-62. DSCF0465 Cubitas Hoyo de Bonet
CUBA: Camagüey: Sierra de Cubitas, Hoyo de Bonet (21.610°N, 77.784°W), bottom of doline, ~100m a.s.l.



Modisimus sp.n. Cub12-63. DSCN0397 Cubitas
CUBA: Camagüey: Sierra de Cubitas, Estación Limones-Tuabaquey (~21.60°N, 77.79°W, 130m a.s.l.)

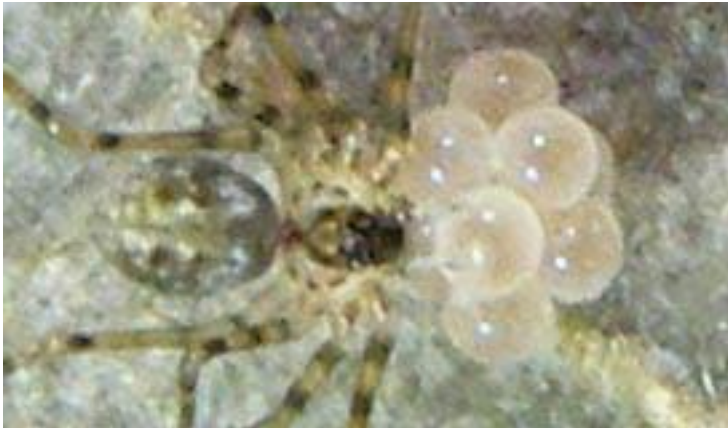


Modisimus sp.n. Cub12-133. DSCF0349 Turquino Pico Joaquín
CUBA: Santiago de Cuba: forest near Pico Joaquín (20.013°N, 76.834°W), 1600-1680m a.s.l.



Modisimus sp.n. Cub12-136. DSCF0260 Turquino

CUBA: Santiago de Cuba: Estación Biológica La Platica, forest near brook (20.009°N, 76.894°W), 830m a.s.l.



Modisimus sp.n. Cub12-140. DSCF0272 Turquino

CUBA: Santiago de Cuba: Estación Biológica La Platica, forest near brook (20.009°N, 76.894°W), 830m a.s.l.



Modisimus sp.n. Cub12-173. DSCN9722 Turquino

CUBA: Santiago de Cuba: Estación Biológica La Platica, forest above station, (20.009°N, 76.888°W), 1000 m a.s.l.



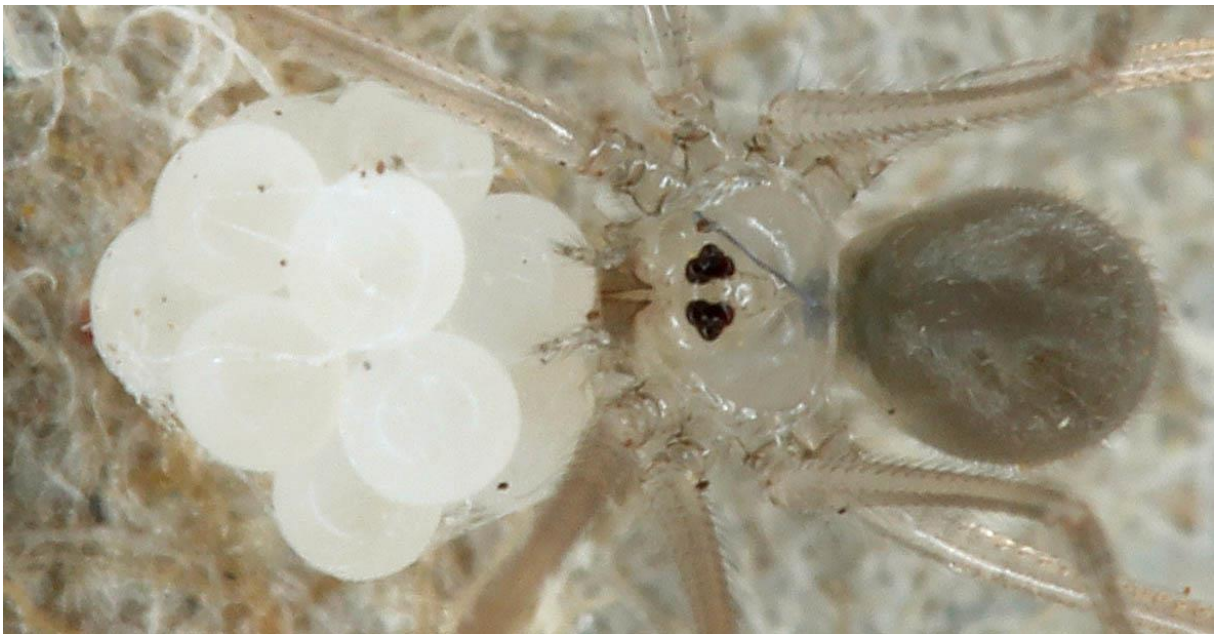
Modisimus culicinus (Simon, 1893). IMG_2382 Belilena Cave
SRI LANKA: Sabaragamuwa Prov.: Belilena Cave near Kitulgala (7.003°N, 80.436°E), 370 m a.s.l.



Modisimus culicinus (Simon, 1893). IMG_9202 Darwin Res Station
GALÁPAGOS: Santa Cruz: near Charles Darwin Research Station (0.743°S, 90.303°W – 0.744°S, 90.299°W), 5-15 m a.s.l.



Modisimus sp.n. Mex17. IMG_9896 2km N Mazatlán
MEXICO: Guerrero, ~2 km N Mazatlán (17.4567°N, 99.4740°W), 1300 m a.s.l.



Modisimus sp.n. Mex17. IMG_9899 2km N Mazatlán
MEXICO: Guerrero, ~2 km N Mazatlán (17.4567°N, 99.4740°W), 1300 m a.s.l.



Modisimus sp.n. Mex20. IMG_0031 1 km SE Los Llanos
MEXICO: Guerrero, ~1 km SE Los Llanos (17.8600°N, 101.7250°W), 50 m a.s.l.



Modisimus sp.n. Mex20. IMG_0100 4km W Huahua
MEXICO: Michoacán, ~4 km W Huahua (18.1963°N, 103.0449°W), 40 m a.s.l.



Modisimus sp.n. Mex20. IMG_0305 Aticama

MEXICO: Nayarit, Aticama (21.4935°N, 105.1953°W), 10 m a.s.l.



Modisimus sp.n. Mex20. IMG_0356 8km E San Blas

MEXICO: Nayarit, ~8 km NE San Blas (21.5855°N, 105.2193°W), 110 m a.s.l.



Modisimus sp.n. Mex20. IMG_0440 3km S Rosario
MEXICO: Sinaloa, ~3 km S Rosario (22.9584°N, 105.8490°W), 65 m a.s.l.



Modisimus sp.n. Mex20. IMG_9960 5km S Papanoa
MEXICO: Guerrero, ~5 km S Papanoa (17.2711°N, 101.0328°W), 75 m a.s.l.



Modisimus sp.n. Mex33. IMG_0076 4km W Huahua
MEXICO: Michoacán, ~4 km W Huahua (18.1963°N, 103.0449°W), 40 m a.s.l.



Modisimus sp.n. Mex48. IMG_0240 N La Quemada
MEXICO: Jalisco, N La Quemada, 'site 3' (21.0111°N, 104.0603°W), 1470 m a.s.l.



Modisimus sp.n. Mex49. IMG_0280 3km W Guayabitos
MEXICO: Nayarit, ~3 km W Guayabitos (21.5302°N, 105.0303°W), 960 m a.s.l.



Modisimus sp.n. Mex49. IMG_0316 Aticama
MEXICO: Nayarit, Aticama (21.4935°N, 105.1953°W), 10 m a.s.l.



Modisimus sp.n. Mex50. IMG_0287 3km W Guayabitos
MEXICO: Nayarit, ~3 km W Guayabitos (21.5302°N, 105.0303°W), 960 m a.s.l.



Modisimus sp.n. Mex50. IMG_0323 Aticama
MEXICO: Nayarit, Aticama (21.4935°N, 105.1953°W), 10 m a.s.l.



Modisimus sp.n. Mex57. IMG_0383 23km S Acaponeta
MEXICO: Nayarit, ~23 km S Acaponeta (22.2805°N, 105.3245°W), 110 m a.s.l.



Modisimus sp.n. Mex61. IMG_0430 3km S Rosario
MEXICO: Sinaloa, ~3 km S Rosario (22.9584°N, 105.8490°W), 65 m a.s.l.



Modisimus sp.n. Mex66. IMG_0496 2km NE Santa Lucia
MEXICO: Sinaloa, ~2 km NE Santa Lucia at Puente el Chirimollo (23.4475°N, 105.8353°W), 1280 m a.s.l.



Modisimus sp.n. Mex78. IMG_0598 30km W Saltillo
MEXICO: Coahuila, ~30 km W Saltillo (25.4655°N, 101.310-101.315°W), ~1400 m a.s.l.



Modisimus sp.n. Mex78. IMG_0744 outside Gruta San Bartolo
MEXICO: *Nuevo León*, ~10 km S Santa Catarina, forest below Gruta de San Bartolo (25.5812°N, 100.4469°W), 960 m a.s.l.



Modisimus sp.n. Mex78. IMG_0752 outside Gruta San Bartolo
MEXICO: *Nuevo León*, ~10 km S Santa Catarina, forest below Gruta de San Bartolo (25.5812°N, 100.4469°W), 960 m a.s.l.



Modisimus sp.n. Mex78. IMG_1277 Cueva de los Sabinos
MEXICO: San Luis Potosí, ~12 km NE Ciudad Valles, outside of Cueva de los Sabinos (22.0920°N, 98.9571°W), 240 m a.s.l.



Modisimus sp.n. Mex102. IMG_1031 Cueva de los Alvarez
MEXICO: Tamaulipas, Gómez Farias, outside Cueva de los Alvarez (23.0445°N, 99.1622°W), 300 m a.s.l.



Modisimus sp.n. Mex102. IMG IMG_1056 Cueva de Ojo de Agua
MEXICO: Tamaulipas, ~2 km E Gómez Farias, outside Cueva del Ojo de Agua (23.0377°N, 99.1292°W),
165 m a.s.l.



Modisimus sp.n. Mex119. IMG_1137 S Quintero
MEXICO: Tamaulipas, 1.5 km S Quintero (22.6482°N, 99.0416°W), 195 m a.s.l.



Modisimus sp.n. Mex120. IMG_1144 S Quintero
MEXICO: Tamaulipas, 1.5 km S Quintero (22.6482°N, 99.0416°W), 195 m a.s.l.



Modisimus sp.n. Mex145. IMG_1497 SW Jacala
MEXICO: Hidalgo, ~2.5 km SW Jacala (20.9948°N, 99.2138°W), 1430 m a.s.l.



Modisimus sp.n. Mex145. IMG_1498 SW Jacala
MEXICO: Hidalgo, ~2.5 km SW Jacala (20.9948°N, 99.2138°W), 1430 m a.s.l.



Modisimus sp.n. Mex151. IMG_1592 Xoxafi
MEXICO: Hidalgo, ~16 km NW Actopan, outside of Grutas de Xoxafi (20.3881°N, 99.0293°W), 1990 m a.s.l.



Modisimus sp.n. Mex180. IMG_2017 N Matias Romero
MEXICO: Oaxaca, ~7 km N Matías Romero (16.9390°N, 95.0065°W), 190 m a.s.l.



Modisimus sp.n. Mex193. IMG_2195 2km N Cosolapa
MEXICO: Veracruz, ~2 km NW Cosolapa (18.6188°N, 96.7022°W), 300 m a.s.l.



Modisimus modicus (Gertsch & Peck, 1992). IMG_9359 N Los Gemelos
GALÁPAGOS: Santa Cruz: 2 km NE Los Gemelos (0.6150°S, 90.3700°W), 570 m a.s.l.



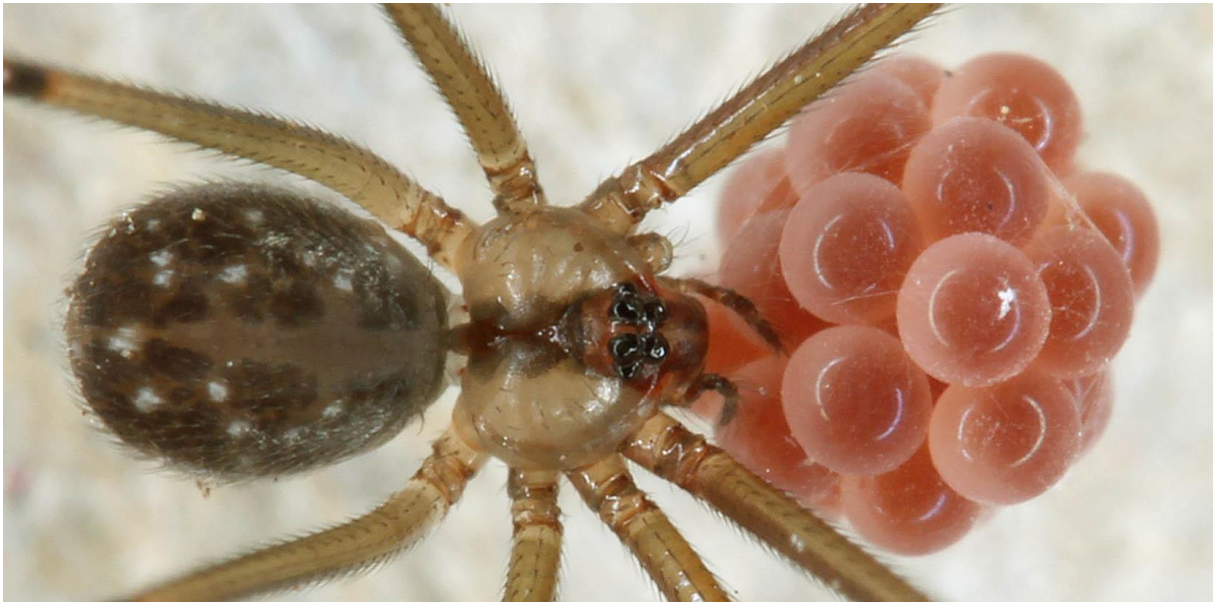
Modisimus pavidus Bryant, 1940. DSCF0190 Turquino
CUBA: Santiago de Cuba: Estación Biológica La Platica, forest near brook (20.009°N, 76.894°W), 830m a.s.l.



Modisimus pusillus Gertsch, 1971. IMG_0745 outside Gruta de San Bartolo
MEXICO: Nuevo León, ~10 km S Santa Catarina, forest below Gruta de San Bartolo (25.5812°N,
100.4469°W), 960 m a.s.l.



Modisimus rainesi Gertsch, 1971. IMG_0802 Cueva de la Boca
MEXICO: Nuevo León, ~4 km E Santiago, Cueva de la Boca (25.4319°N, 100.1138°W), 530 m a.s.l.



Modisimus rainesi Gertsch, 1971. IMG_0882 NW Villagran
MEXICO: Tamaulipas, ~9 km NW Villagran (24.5385°N, 99.5398°W), 410 m a.s.l.



Modisimus rainesi Gertsch, 1971. IMG_0889 NW Villagran
MEXICO: Tamaulipas, ~9 km NW Villagran (24.5385°N, 99.5398°W), 410 m a.s.l.



Modisimus simoni Huber, 1997. IMG_2912 El Encanto
VENEZUELA: Trujillo: near El Encanto (9.7599°N, 70.7329°W), 250 m a.s.l.



Modisimus simoni Huber, 1997. IMG_6185 La Llovizna
VENEZUELA: Bolívar: Ciudad Guayana, Parque La Llovizna (8.3130°N, 62.6724°W), 50 m a.s.l.



Modisimus simoni Huber, 1997. IMG_6374 La Llovizna
 VENEZUELA: Bolívar: Ciudad Guayana, Parque La Llovizna (8.3130°N, 62.6724°W), 50 m a.s.l.



Modisimus texanus Banks, 1905. IMG_0868 outside Cueva de la Boca
 MEXICO: Nuevo León, ~4 km E Santiago, forest below Cueva de la Boca (25.4324°N, 100.1138°W),
 470 m a.s.l.



Modisimus texanus Banks, 1905. IMG_0895 NW Villagran
MEXICO: *Tamaulipas*, ~9 km NW Villagran (24.5385°N, 99.5398°W), 410 m a.s.l.



Modisimus texanus Banks, 1905. IMG_0907 S Villagran
MEXICO: *Tamaulipas*, ~4 km S Villagran (24.4367°N, 99.5012°W), 420 m a.s.l.



Modisimus texanus Banks, 1905. IMG_0930 N Llera de Canales
MEXICO: Tamaulipas, ~9 km N Llera de Canales (23.3989°N, 98.9958°W), 370 m a.s.l.



Modisimus texanus Banks, 1905. IMG_1069 Cueva de Ojo de Agua
MEXICO: Tamaulipas, ~2 km E Gómez Farias, outside Cueva del Ojo de Agua (23.0377°N, 99.1292°W), 165 m a.s.l.



Modisimus texanus Banks, 1905. IMG_1271 Cueva de los Sabinos
 MEXICO: San Luis Potosí, ~12 km NE Ciudad Valles, outside of Cueva de los Sabinos (22.0920°N, 98.9571°W), 240 m a.s.l.



Modisimus sp.n. USA3. IMG_9812 Cat Tail Fall
 USA: Texas: Big Bend N.P., Cat Tail Fall (29.273°N, 103.336°W, 1260 m a.s.l.)

Muruta Huber, 2018

Muruta bario (Huber, 2016). IMG_3514 Bario
MALAYSIA-BORNEO: Sarawak: Bario, forest along river W of town (3.736°N, 115.437-115.443°E), 1150-1250 m a.s.l.



Muruta bario (Huber, 2016). IMG_3528 Bario
MALAYSIA-BORNEO: Sarawak: Bario, forest along river W of town (3.736°N, 115.437-115.443°E), 1150-1250 m a.s.l.



Muruta tambunan (Huber, 2016). IMG_3625 Crocker
MALAYSIA-BORNEO: Sabah: Crocker Range between Kota Kinabalu and Tambunan, S-slope, forest along river (5.783°N, 116.338-116.340°E), 1430-1480 m a.s.l.



Muruta tambunan (Huber, 2016). IMG_3749 Kinabalu Silau
MALAYSIA-BORNEO: Sabah: Mt. Kinabalu, forest along Silau Silau Trail (6.010-6.017°N, 116.537-116.543°E), 1550-1650 m a.s.l.



Muruta tambunan (Huber, 2016). IMG_3757 Kinabalu Silau
MALAYSIA-BORNEO: Sabah: Mt. Kinabalu, forest along Silau Silau Trail (6.010-6.017°N, 116.537-116.543°E), 1550-1650 m a.s.l.

***Nerudia* Huber, 2000**

Nerudia sp.n. Arg3. IMG_7891 Nono

ARGENTINA: Córdoba Province, ~5 km E Nono (31.7982°S, 64.9515°W), 995 m a.s.l.



Nerudia sp.n. Arg35. IMG_8177 Chilecito-Famatina

ARGENTINA: La Rioja Province, between Chilecito and Famatina (29.0027°S, 67.4855°W), 1300 m a.s.l.



Nerudia sp.n. Arg38. IMG_8222 El Rodeo

ARGENTINA: Catamarca Province, El Rodeo, trail to Cristo Redentor (28.2229°S, 65.8677°W), 1460 m a.s.l.



Nerudia sp.n. Arg38. IMG_8224 El Rodeo

ARGENTINA: Catamarca Province, El Rodeo, trail to Cristo Redentor (28.2229°S, 65.8677°W), 1460 m a.s.l.



Nerudia sp.n. Arg52. IMG_8384 Purmamarca

ARGENTINA: Jujuy Province, between San Salvador and Purmamarca, 'site 2' (23.8849°S, 65.4613°W), 2150 m a.s.l.



Nerudia sp.n. Arg58. IMG_8533 NW Campo Quijano

ARGENTINA: Salta Province, ~15 km NW Campo Quijano (24.7918°S, 65.7297°W), 2020 m a.s.l.



Nerudia sp.n. Arg83. IMG_8816 Alemania-Cafayate
ARGENTINA: Salta Province, between Alemania and Cafayate (25.7023°S, 65.7022°W), 1340 m a.s.l.



Nerudia sp.n. Arg83. IMG_8827 Alemania-Cafayate
ARGENTINA: Salta Province, between Alemania and Cafayate (25.7023°S, 65.7022°W), 1340 m a.s.l.



Nerudia sp.n. Mich20. IMG_7978 S Astica

ARGENTINA: San Juan Province, ~7.5 km S Astica (31.0223°S, 67.2976°W), 865 m a.s.l.



Nerudia sp.n. Mich20. IMG_8026 Valle Fertil

ARGENTINA: San Juan Province, San Agustín de Valle Fertil (30.6366°S, 67.4863°W), 880 m a.s.l.



Nerudia sp.n. Mich20. IMG_8140 Cuesta de Miranda
ARGENTINA: La Rioja Province, Cuesta de Miranda, 'site 1' (29.3511°S, 67.7924°W), 1960 m a.s.l.



Nerudia sp.n. Mich20. IMG_8205 SE Aimogasta
ARGENTINA: La Rioja Province, SE Aimogasta, 'site 2' (28.9015°S, 66.6538°W), 755 m a.s.l.



Nerudia sp.n. Mich20. IMG_8888 Nacimientos

ARGENTINA: Catamarca Province, near Nacimientos (27.1559°S, 66.6925°W), 2120 m a.s.l.



Nerudia sp.n. Mich20. IMG_8936 Chumbicha

ARGENTINA: Catamarca Province, ~5 km NW Chumbicha, near Balneario El Caolín, 'site 2' (28.8109°S, 66.2500°W), 640 m a.s.l.

***Ninetis* Simon, 1890**

Ninetis sp.n. Om84. IMG_4380 E Al Marnif
OMAN: *Dhofar*: E of Al Marnif (16.8640°N, 53.7233°E), 60 m a.s.l.



Ninetis subtilissima Simon, 1890. IMG_4104 Wadi Ghul
OMAN: *Ad Dakhiliyah*: Wadi Ghul, 'site 1' (23.234°N, 57.150°E), 1440 m a.s.l.



Ninetis subtilissima Simon, 1890. IMG_4222 Wadi Tiwi
OMAN: Ash Sharqiyah South: Wadi Tiwi (22.813°N, 59.253°E), 35 m a.s.l.



Ninetis subtilissima Simon, 1890. IMG_4228 Wadi Tiwi
OMAN: Ash Sharqiyah South: Wadi Tiwi (22.813°N, 59.253°E), 35 m a.s.l.



Ninetis subtilissima Simon, 1890. IMG_4245 Wadi Shab
OMAN: Ash Sharqiyah South: Wadi Shab (22.833°N, 59.238°E), 100 m a.s.l.

***Nipisa* Huber, 2018**



Nipisa anai (Huber, 2017). IMG_5590 Rifle Range
SINGAPORE: Rifle Range (1°21.3'N, 103°47.8'E), 50 m a.s.l.



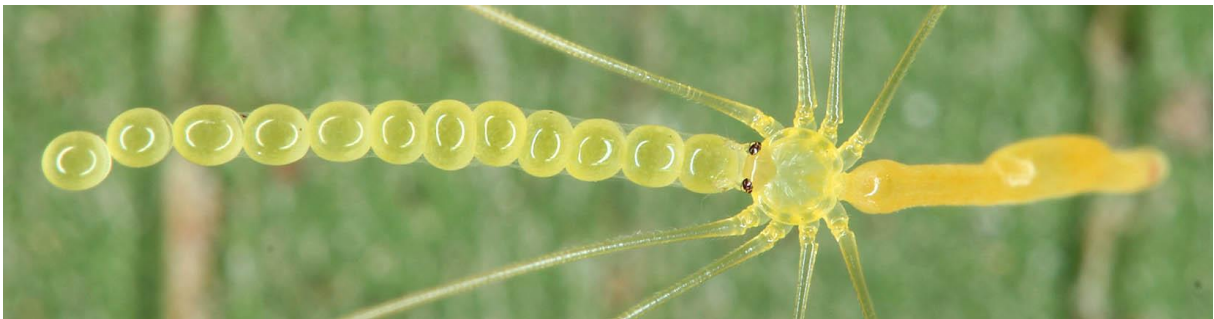
Nipisa anai (Huber, 2017). IMG_8832 Anai
INDONESIA: Sumatra, West Sumatra, Lembah Anai Forest Reserve, forest along stream (0.472°S, 100.363°E), 600 m a.s.l.



Nipisa bankirai (Huber, 2017). IMG_3420 Niah
MALAYSIA-BORNEO: Sarawak: Niah Cave N.P., forest near headquarters (3.820°N, 113.763°E), 40 m a.s.l.



Nipisa deelemanae (Huber, 2011). IMG_3788 Poring
MALAYSIA-BORNEO: Sabah: Mt. Kinabalu, Poring Hot Springs, forest near beginning of Kipungit Trail (6.048°N, 116.706°E), 450 m a.s.l.



Nipisa deelemanae (Huber, 2011). IMG_3831 Poring
MALAYSIA-BORNEO: Sabah: Mt. Kinabalu, Poring Hot Springs, forest near beginning of Kipungit Trail (6.048°N, 116.706°E), 450 m a.s.l.



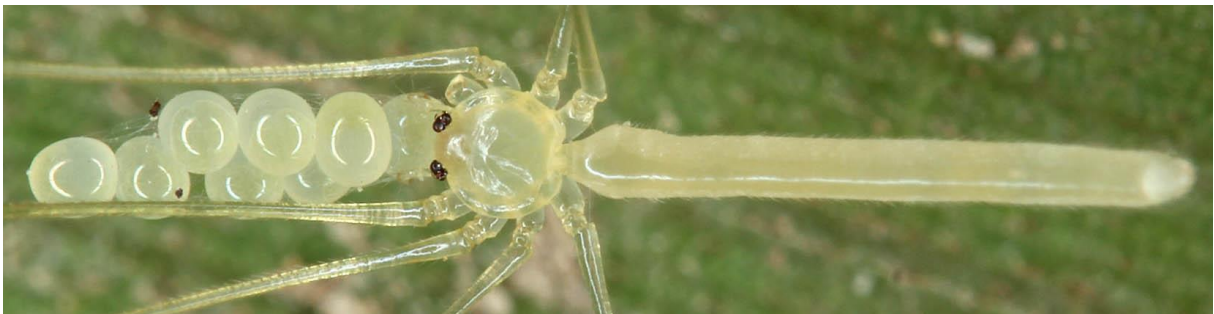
Nipisa kubah (Huber, 2011). IMG_2808 Kubah
MALAYSIA-BORNEO: Sarawak: Kubah N.P., along Waterfall Trail (1.596-1.606°N, 110.180-110.187°E), 200-300 m a.s.l.



Nipisa kubah (Huber, 2011). IMG_2839 Kubah
MALAYSIA-BORNEO: *Sarawak*: Kubah N.P., along Waterfall Trail (1.596-1.606°N, 110.180-110.187°E), 200-300 m a.s.l.



Nipisa kubah (Huber, 2011). IMG_2853 Kubah
MALAYSIA-BORNEO: *Sarawak*: Kubah N.P., along Waterfall Trail (1.596-1.606°N, 110.180-110.187°E), 200-300 m a.s.l.



Nipisa lehi (Huber, 2011). IMG_3144 Lambir
MALAYSIA-BORNEO: *Sarawak*: Lambir Hills N.P. (4.198-4.207°N, 114.034-114.045°E), 60-150 m a.s.l.



Nipisa lehi (Huber, 2011). IMG_3203 Lambir
MALAYSIA-BORNEO: *Sarawak*: Lambir Hills N.P. (4.198-4.207°N, 114.034-114.045°E), 60-150 m a.s.l.



Nipisa phyllicola (Deeleman-Reinhold, 1986). IMG_5888 Kemensah
MALAYSIA: Selangor: Kemensah (3°13.31'N, 101°47.57'E), 230 m a.s.l.



Nipisa phyllicola (Deeleman-Reinhold, 1986). IMG_5960 Ulu Dong
MALAYSIA: Pahang: Ulu Dong (3°56.5'N, 102°01.6'E), 190 m a.s.l.



Nipisa phyllicola (Deeleman-Reinhold, 1986). IMG_6034 Gunung Liang
MALAYSIA: Perak: Gunung Liang (3°47.7'N, 101°32.0'E), 250 m a.s.l.



Nipisa phyllicola (Deeleman-Reinhold, 1986). IMG_9056 Barisan
INDONESIA: Sumatra, Lampung, Bukit Barisan (5.528°S, 104.424°E), 550-600 m a.s.l.



Nipisa semengoh (Huber, 2011). IMG_2964 Semengoh
MALAYSIA-BORNEO: *Sarawak*: Semengoh Arboretum, Masing Trail (1.397-1.399°N, 110.317-110.322°E), 60-80 m a.s.l.



Nipisa subphyllicola (Deeleman-Reinhold, 1986). IMG_1213 Sto Domingo
PHILIPPINES: Mindanao, Bukidnon Prov., Santo Domingo (7.782°N, 125.397°E), 560 m a.s.l.



Nipisa subphyllicola (Deeleman-Reinhold, 1986). IMG_1321 Sto Domingo
PHILIPPINES: Mindanao, Bukidnon Prov., Santo Domingo (7.782°N, 125.397°E), 560 m a.s.l.



Nipisa subphyllicola (Deeleman-Reinhold, 1986). IMG_1327 Sto Domingo
PHILIPPINES: Mindanao, Bukidnon Prov., Santo Domingo (7.782°N, 125.397°E), 560 m a.s.l.



Nipisa subphyllicola (Deeleman-Reinhold, 1986). IMG_1362 Sto Domingo
PHILIPPINES: Mindanao, Bukidnon Prov., Santo Domingo (7.782°N, 125.397°E), 560 m a.s.l.



Nipisa subphyllicola (Deeleman-Reinhold, 1986). IMG_1555 Malagos
PHILIPPINES: Mindanao, Davao del Sur Prov., Malagos Watershed (7.184°N, 125.415°E), 390 m a.s.l.

***Nyikoa* Huber, 2007**



Nyikoa limbe Huber, 2007. DSCF0590 Dieke
GUINEA: Guinée Forestière: Forêt Classée de Diéké (7°32.0'N, 8°49.9'W), 430 m a.s.l.



Nyikoa limbe Huber, 2007. DSCF1223-Kakum
GHANA: Central Region: Kakum National Park (5.3484°N, -1.3835°W), 160 m a.s.l.

***Otavaloa* Huber, 2000**

Otavaloa lisei Huber, 2000. IMG_1884 Tabatinga
BRAZIL: Amazonas, forest near Tabatinga (4.244°S, 69.92-69.93°W), 90 m a.s.l.

***Paiwana* Huber, 2018**

Paiwana chengpoi (Huber & Dimitrov, 2014). DSCF2052 near Chouqia
TAIWAN: Pingtung: near Chouqia (22.2409°N, 120.8552°E), 440 m a.s.l.



Paiwana chengpoi (Huber & Dimitrov, 2014). DSCF2062 near Chouqia
TAIWAN: Pingtung: near Chouqia (22.2409°N, 120.8552°E), 440 m a.s.l.

***Panjange* Deeleman-Reinhold & Deeleman, 1983**



Panjange alba Deeleman-Reinhold & Deeleman, 1983. IMG_9305 Tinoor
INDONESIA: Sulawesi, North Sulawesi, Tinoor Fall near Tomohon (1.3820°N, 124.8363°E), 500 m a.s.l.



Panjange alba Deeleman-Reinhold & Deeleman, 1983. IMG_9310 Tinoor
INDONESIA: Sulawesi, North Sulawesi, Tinoor Fall near Tomohon (1.3820°N, 124.8363°E), 500 m a.s.l.



Panjange camiguin Huber, 2015. IMG_1782 Mt Hibok Hibok
PHILIPPINES: Camiguin Isl., Mt. Hibok Hibok (9.196°N, 124.692°E), 600 m a.s.l.



Panjange camiguin Huber, 2015. IMG_1807 Mt Hibok Hibok
PHILIPPINES: Camiguin Isl., Mt. Hibok Hibok (9.196°N, 124.692°E), 600 m a.s.l.



Panjange camiguin Huber, 2015. IMG_2439 Rajah Sikatuna
PHILIPPINES: Bohol Isl., Rajah Sikatuna (Magsaysay Park) (9.705°N, 124.123°E), 430 m a.s.l.



Panjange cavicola Deeleman-Reinhold & Deeleman, 1983. IMG_9191 Bantimurung
INDONESIA: Sulawesi, South Sulawesi, Bantimurung, at rocks along river (5.015°S, 119.686°E), 60 m a.s.l.



Panjange dinagat Huber, 2015. IMG_1908 Paragua
PHILIPPINES: Dinagat Isl., near Libjo, Paragua Forest, 'site 1' (10.222°N, 125.553°E), 130 m a.s.l.



Panjange lanthana Deeleman-Reinhold & Deeleman, 1983. IMG_1999 Mt Isarog
PHILIPPINES: Luzon, Camarines Sur Prov., Mt. Isarog, W slope (13.664°N, 123.34-123.35°E), ~600-900 m a.s.l.



Panjange marilog Huber, 2015. IMG_1636 Marilog
PHILIPPINES: Mindanao, Davao del Sur Prov., Marilog Distr., Baganihan (7.469°N, 125.250°E), 1210 m a.s.l.



Panjange thomi Huber, 2019. IMG_9482 Manokwari
INDONESIA: West Papua, Manokwari, Gunung Meja (0.860°S, 134.084°E), 190 m a.s.l.



Panjange togutil Huber, 2019. IMG_9534 Sofifi
INDONESIA: Halmahera, degraded forest along river near Sofifi (0.715°N, 127.586°E), 130-180 m a.s.l.



Panjange togutil Huber, 2019. IMG_9558 Sofifi
INDONESIA: Halmahera, degraded forest along river near Sofifi (0.715°N, 127.586°E), 130-180 m a.s.l.

Pholcophora Banks, 1896

Pholcophora sp.n. Mex16. IMG_9875 2km N Mazatlán
MEXICO: Guerrero, ~2 km N Mazatlán (17.4567°N, 99.4740°W), 1300 m a.s.l.



Pholcophora sp.n. Mex16. IMG_9880 2km N Mazatlán
MEXICO: Guerrero, ~2 km N Mazatlán (17.4567°N, 99.4740°W), 1300 m a.s.l.



Pholcophora sp.n. Mex157. IMG_1738 N Calapa bridge
MEXICO: Puebla, ~35 km SE Tehuacan, N of Calapa bridge (18.1652°N, 97.2605°W), 1020 m a.s.l.



Pholcophora sp.n. Mex354. IMG_1748 N Calapa bridge
MEXICO: Puebla, ~35 km SE Tehuacan, N of Calapa bridge (18.1652°N, 97.2605°W), 1020 m a.s.l.



Pholcophora texana Gertsch, 1935. IMG_1483 SW Jacala
MEXICO: Hidalgo, ~2.5 km SW Jacala (20.9948°N, 99.2138°W), 1430 m a.s.l.



Pholcophora texana Gertsch, 1935. IMG_1484 SW Jacala
MEXICO: Hidalgo, ~2.5 km SW Jacala (20.9948°N, 99.2138°W), 1430 m a.s.l.

Pholcus Walckenaer, 1805

Pholcus arayat Huber, 2011. IMG_2220 Pamulaklakin
PHILIPPINES: Luzon, Bataan Prov., near Olangapo, along river near Pamulaklakin Forest Trail
(14.798°N, 121.338°E), 80 m a.s.l.



Pholcus baguio Huber, 2016. IMG_2296 Mt Kabuyao
PHILIPPINES: Luzon, Benguet Prov., near Baguio, Mt. Kabuyao, N slope (16.374°N, 120.557°E), 1200-
1400 m a.s.l.



Pholcus baka Huber, 2011. DSCF0099 vor Ndjole
GABON: Moyen-Ogooué: near Ndjolé, site 1 (0°09.0'S, 10°40.0'E), 120 m a.s.l.



Pholcus camba Huber, 2011. IMG_9209 Bantimurung
INDONESIA: Sulawesi, South Sulawesi, Bantimurung, at rocks along river (5.015°S, 119.686°E), 60 m a.s.l.



Pholcus ceylonicus O. Pickard-Cambridge, 1869. IMG_2430 Kitulgala
SRI LANKA: Sabaragamuwa Prov.: near Kitulgala (6.985°N, 80.430°E), 170 m a.s.l.



Pholcus chappuisi Fage, 1936. DSCF0458 Mau Mau
KENYA: Central Prov.: Mt. Kenya, Mau Mau Cave (0°13.0'S, 37°08.2'E), 2230 m a.s.l.



Pholcus chappuisi Fage, 1936. DSCF0815 Molo
KENYA: Rift Valley: Molo, at plants and buildings in hotel garden (0°14.5'S, 35°43.3'E), 2510 m a.s.l.



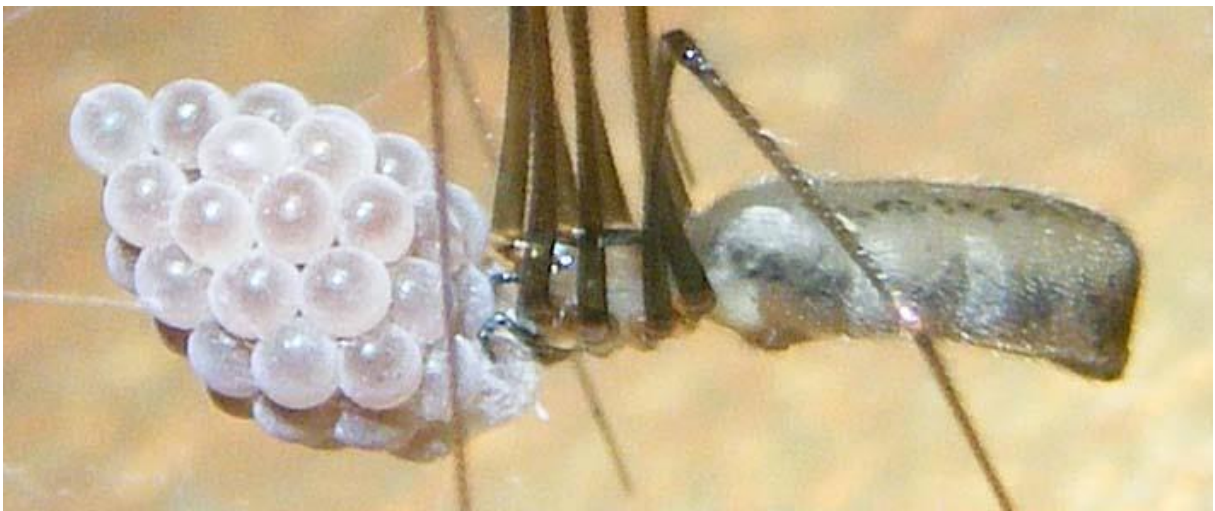
Pholcus debilis (Thorell, 1899). cameroon0389 Nyasoso
CAMEROON: Southwest Region: Mt. Koupe above Nyasoso (4°49.6'N, 9°41.1'E), ~1600 m a.s.l.



Pholcus doucki Huber, 2011. DSCF0361 Doucki
GUINEA: Moyenne-Guinée: near Doucki, canyon (10°59.6'N, 12°35.3'W), 1020 m a.s.l.



Pholcus doucki Huber, 2011. DSCF0423 Doucki
GUINEA: Moyenne-Guinée: near Doucki, canyon (10°59.6'N, 12°35.3'W), 1020 m a.s.l.



Pholcus fragillimus Strand, 1907. DSCF1835 Tunghai Univ
TAIWAN: Taichung: Tunghai University campus (24.176°N, 120.60°E), 120-180 m a.s.l.



Pholcus gracillimus Thorell, 1890 sensu Huber 2011. IMG_6067 Cameron Highlands
MALAYSIA: Pahang: Cameron Highlands, near Tanah Rata (4°27.7'N, 101°23.4'E), 1300-1400 m a.s.l.



Pholcus kakum Huber, 2009. DSCF0701 Ziama
GUINEA: Guinée Forestière: Forêt Classée de Ziama (8°24.2'N, 9°19.3'W), 640 m a.s.l.



Pholcus kindia Huber, 2011. DSCF0092 Koumbaya
GUINEA: Basse-Guinée: near Koumbaya (10°10.3'N, 12°53.3'W), forest, 220 m a.s.l.



Pholcus kindia Huber, 2011. DSCF0769 near Kindia
GUINEA: Basse-Guinée: near Kindia (10°00.8'N, 12°48.6'W), along brook in plantation forest, 540 m a.s.l.



Pholcus kohi Huber, 2011. IMG_5459 MacRitchie Reservoir
SINGAPORE: MacRitchie Reservoir Park (1°21.3'N, 103°48.8'E), 50 m a.s.l.



Pholcus kohi Huber, 2011. IMG_5485 MacRitchie Reservoir
SINGAPORE: MacRitchie Reservoir Park (1°21.3'N, 103°48.8'E), 50 m a.s.l.



Pholcus leruthi Lessert, 1935. DSCF0050 Mpanga
UGANDA: Mpigi District, Mpanga Forest Reserve (0°12.4'N, 32°18.1'E), 1200 m a.s.l.



Pholcus leruthi Lessert, 1935. DSCF0709 Kakamega
KENYA: Western Prov.: Kakamega Forest N.P., Arboretum trail (0°21.3'N, 34°51.5'E), 1620 m a.s.l.



Pholcus mentawir Huber, 2011. IMG_9165 Sungai Wain
INDONESIA-BORNEO: East Kalimantan, degraded forest near Sungai Wain (1.149°S, 116.850°E), 290 m a.s.l.



Pholcus sp.n. Mor1. IMG_5676 near Toufliht
MOROCCO: near Toufliht (31.4715°N, 7.4332°W), 1465 m a.s.l.



Pholcus negara Huber, 2011. IMG_6426 Hala Bala
THAILAND: Narathiwat: Hala Bala Wildlife Sanctuary, 'site 2' (5°48.4'N, 101°48.6'E), 330 m a.s.l.



Pholcus negara Huber, 2011. IMG_6626 Phanombench
THAILAND: Krabi: Khao Phanom Bencha N.P., trails near headquarters (8°14.1'N, 98°55.1'E), 150-300 m a.s.l.



Pholcus negara Huber, 2011. IMG_8858 Baso

INDONESIA: Sumatra, West Sumatra, near Baso Cave (0.249°S, 100.483°E), 700 m a.s.l.



Pholcus opilionoides (Schranck, 1781). IMG_3788_Bonn001

GERMANY: NRW, Bonn, Bad Godesberg (50.6871°N, 7.1448°E), 70 m a.s.l.



Pholcus opilionoides (Schranck, 1781). IMG_3795_Bonn002

GERMANY: NRW, Bonn, Bad Godesberg (50.6871°N, 7.1448°E), 70 m a.s.l.



Pholcus pagbilao Huber, 2011. IMG_1980 Mt Isarog
PHILIPPINES: Luzon, Camarines Sur Prov., Mt. Isarog, W slope (13.664°N, 123.34-123.35°E), ~600-900 m a.s.l.



Pholcus phalangioides (Fuesslin, 1775). IMG_3800_Bonn003
GERMANY: NRW, Bonn, Bad Godesberg (50.6871°N, 7.1448°E), 70 m a.s.l.



Pholcus phalangioides (Fuesslin, 1775). IMG_3804_Bonn004
GERMANY: NRW, Bonn, Bad Godesberg (50.6871°N, 7.1448°E), 70 m a.s.l.



Pholcus phalangioides (Fuesslin, 1775). IMG_3806_Bonn005
GERMANY: NRW, Bonn, Bad Godesberg (50.6871°N, 7.1448°E), 70 m a.s.l.



Pholcus phalangioides (Fuesslin, 1775). IMG_3808_Bonn006
GERMANY: NRW, Bonn, Bad Godesberg (50.6871°N, 7.1448°E), 70 m a.s.l.



Pholcus phalangioides (Fuesslin, 1775). IMG_3811_Bonn007
GERMANY: NRW, Bonn, Bad Godesberg (50.6871°N, 7.1448°E), 70 m a.s.l.



Pholcus phalangioides (Fuesslin, 1775). IMG_3814_Bonn008
GERMANY: NRW, Bonn, Bad Godesberg (50.6871°N, 7.1448°E), 70 m a.s.l.



Pholcus phalangioides (Fuesslin, 1775). IMG_3818_Bonn009
GERMANY: NRW, Bonn, Bad Godesberg (50.6871°N, 7.1448°E), 70 m a.s.l.



Pholcus phalangioides (Fuesslin, 1775). IMG_3821_Bonn010
GERMANY: NRW, Bonn, Bad Godesberg (50.6871°N, 7.1448°E), 70 m a.s.l.



Pholcus phalangioides (Fuesslin, 1775). IMG_3823_Bonn011
GERMANY: NRW, Bonn, Bad Godesberg (50.6871°N, 7.1448°E), 70 m a.s.l.



Pholcus phalangioides (Fuesslin, 1775). IMG_3827_Bonn012
GERMANY: NRW, Bonn, Bad Godesberg (50.6871°N, 7.1448°E), 70 m a.s.l.



Pholcus phalangioides (Fuesslin, 1775). IMG_3830_Bonn013
GERMANY: NRW, Bonn, Bad Godesberg (50.6871°N, 7.1448°E), 70 m a.s.l.



Pholcus phalangioides (Fuesslin, 1775). IMG_3834_Bonn014
GERMANY: NRW, Bonn, Bad Godesberg (50.6871°N, 7.1448°E), 70 m a.s.l.



Pholcus phalangioides (Fuesslin, 1775). IMG_3836_Bonn015
GERMANY: NRW, Bonn, Bad Godesberg (50.6871°N, 7.1448°E), 70 m a.s.l.



Pholcus phalangioides (Fuesslin, 1775). IMG_3844_Bonn016
GERMANY: NRW, Bonn, Bad Godesberg (50.6871°N, 7.1448°E), 70 m a.s.l.



Pholcus phalangioides (Fuesslin, 1775). IMG_3848_Bonn017
GERMANY: NRW, Bonn, Bad Godesberg (50.6871°N, 7.1448°E), 70 m a.s.l.



Pholcus phalangioides (Fuesslin, 1775). IMG_3852_Bonn018
GERMANY: NRW, Bonn, Bad Godesberg (50.6871°N, 7.1448°E), 70 m a.s.l.



Pholcus phalangioides (Fuesslin, 1775). IMG_3854_Bonn019
GERMANY: NRW, Bonn, Bad Godesberg (50.6871°N, 7.1448°E), 70 m a.s.l.



Pholcus phalangioides (Fuesslin, 1775). IMG_3856_Bonn020
GERMANY: NRW, Bonn, Bad Godesberg (50.6871°N, 7.1448°E), 70 m a.s.l.



Pholcus phalangioides (Fuesslin, 1775). IMG_3866_Bonn021
GERMANY: NRW, Bonn, Bad Godesberg (50.6871°N, 7.1448°E), 70 m a.s.l.



Pholcus phalangioides (Fuesslin, 1775). IMG_3868_Bonn022
GERMANY: NRW, Bonn, Bad Godesberg (50.6871°N, 7.1448°E), 70 m a.s.l.



Pholcus punu Huber, 2014. DSCF0461 Canyon
GABON: Haut Ogooué: forest above Canyon rose near Lékoni (1°38.6'S, 14°17.5'E), 600 m a.s.l.



Pholcus rawiriae Huber, 2014. DSCF0249 Mayebout
GABON: Ogooué-Ivindo: Monts de Belinga, forest near Mayebout (1°06.7'N, 13°06.6'E), 500 m a.s.l.



Pholcus rawiriae Huber, 2014. DSCF0386 Mohoba
GABON: Ogooué-Ivindo: near Mohoba Mozeye (0°16.8'N, 13°20.9'E), 510 m a.s.l.



Pholcus taita Huber, 2011. DSCF0061 Taita-Ngangao
KENYA: Coast Prov.: Taita Hills, Ngangao Forest (3°22.2'S, 38°20.4'E), 1810 m a.s.l.



Pholcus taita Huber, 2011. DSCF0113 Taita-Macha
KENYA: Coast Prov.: Taita Hills, Macha Forest (3°25.3'S, 38°21.5'E), 1610 m a.s.l.



Pholcus taita Huber, 2011. DSCF0115 Taita-Macha
KENYA: Coast Prov.: Taita Hills, Macha Forest (3°25.3'S, 38°21.5'E), 1610 m a.s.l.



Pholcus taita Huber, 2011. DSCF0127 Taita-Macha
KENYA: Coast Prov.: Taita Hills, Macha Forest (3°25.3'S, 38°21.5'E), 1610 m a.s.l.



Pholcus twa Huber, 2011. DSCF0078 Mgahinga
UGANDA: Kisoro District, Mgahinga Gorilla N.P., at building (~1°21.2'S, 29°37.1'E), 2350 m a.s.l.



Pholcus twa Huber, 2011. DSCF0117 Mgahinga
UGANDA: Kisoro District, Mgahinga Gorilla N.P., Garama Cave, at entrance (1°21.4'S, 29°37.9'E), 2500 m a.s.l.,

***Physocyclus* Simon, 1893**

Physocyclus enaulus Crosby, 1926. IMG_9784 Sta Elena
USA: Texas: Big Bend N.P., Santa Elena, Terlingua Creek (29.167°N, 103.611°W, 640 m a.s.l.)



Physocyclus globosus (Taczanowski, 1874). DSCF1695-Mpraeso
GHANA: Eastern Region: near Mpraeso (6.5678°N, -0.7310°W), 370 m a.s.l.



Physocyclus globosus (Taczanowski, 1874). IMG_1881 3km W Tehuantepec
MEXICO: Oaxaca, ~3 km W Tehuantepec (16.3196°N, 95.2818°W), 105 m a.s.l.



Physocyclus modestus Gertsch, 1971 (?). IMG_9714 5km SE Mezcala
MEXICO: Guerrero, ~5 km SE Mezcala (17.9116°N, 99.5585°W), 495 m a.s.l.



Physocyclus paredesi Valdez-Mondragón, 2010. IMG_1826 N San Pedro Totolapa
MEXICO: Oaxaca, ~3 km N San Pedro Totolapa (16.6976°N, 96.3180°W), 1100 m a.s.l.



Physocyclus validus Gertsch, 1971. IMG_9712 5km SE Mezcala
MEXICO: Guerrero, ~5 km SE Mezcala (17.9116°N, 99.5585°W), 495 m a.s.l.



Physocyclus validus Gertsch, 1971. IMG_0146 6km S Coquimatlán
MEXICO: Colima, ~6 km S Coquimatlán, 'Cueva sin Nombre' (19.1506°N, 103.8349°W), 320 m a.s.l.

***Pinocchio* Huber & Carvalho, 2019**



Pinocchio barauna Huber & Carvalho, 2019. DSCN5209-15
BRAZIL: Rio Grande do Norte, near Baraúna, Caverna Porco do Mato II (5°02.80'S, 37°32.39'W), 160 m a.s.l.

***Pisaboa* Huber, 2000**

Pisaboa fombonai Huber, 2010. IMG_2880 Cano Azul
VENEZUELA: Mérida: forest above Caño Azul (8.8543°N, 71.3651°W), 280 m a.s.l.



Pisaboa lionzae Huber, 2020. IMG_2736 Mesa Bolívar
VENEZUELA: Mérida: forest above Mesa Bolívar (8.467°N, 71.614°W), 1300 m a.s.l.



Pisaboa marcuzzii (Caporiacco, 1955). IMG_2950 Santa Cruz de la Alegría
 VENEZUELA: Falcón: forest near Santa Cruz de La Alegría (10.8795°N, 68.4949°W), 100 m a.s.l.



Pisaboa marcuzzii (Caporiacco, 1955). IMG_6559 Cerro Santa Ana
 VENEZUELA: Falcón: Península de Paraguaná, Cerro Santa Ana (11.8177°N, 69.9468°W), 480 m a.s.l.



Pisaboa silvae Huber, 2000. IMG_1794 Tabatinga
BRAZIL: Amazonas, forest near Tabatinga (4.244°S, 69.92-69.93°W), 90 m a.s.l.

***Pribumia* Huber, 2018**



Pribumia atrigularis (Simon, 1901). IMG_5697 Gunung Ledang
MALAYSIA: Johor: Gunung Ledang, forest near Puteri Falls (2°21.2'-2°21.6'N, 102°37.8'-102°38.1'E),
100-300 m a.s.l.



Pribumia atrigularis (Simon, 1901). IMG_5887 Kamansah
MALAYSIA: Selangor: Kemansah (3°13.31'N, 101°47.57'E), 230 m a.s.l.



Pribumia hurau (Huber, 2011). IMG_8983 Harau
INDONESIA: Sumatra, West Sumatra, Gua Limpa (Cave) above Harau Valley (0.104°S, 100.680°E), 770 m a.s.l.



Pribumia singalang (Huber, 2011). IMG_8744 Anai
INDONESIA: Sumatra, West Sumatra, Lembah Anai Forest Reserve, forest along stream (0.472°S, 100.363°E), 600 m a.s.l.



Pribumia singalang (Huber, 2011). IMG_8748 Anai
INDONESIA: Sumatra, West Sumatra, Lembah Anai Forest Reserve, forest along stream (0.472°S, 100.363°E), 600 m a.s.l.



Pribumia singalang (Huber, 2011). IMG_8808 Anai
INDONESIA: Sumatra, West Sumatra, Lembah Anai Forest Reserve, forest along stream (0.472°S, 100.363°E), 600 m a.s.l.

***Priscula* Simon, 1893**



Priscula acarite Huber, 2020. IMG_6701 E Curimagua
VENEZUELA: Falcón: Sierra de San Luis, E Curimagua, Cuevas de Acarite (11.1737°N, 69.6280°W), 960 m a.s.l.



Priscula andinensis González-Sponga, 1996. IMG_7174 Bocono-Burbusay
 VENEZUELA: Trujillo: between Boconó and Burbusay (9.3945°N, 70.2674°W), 1820 m a.s.l.



Priscula binghamae (Chamberlin, 1916). IMG_8269 Tucuman
 ARGENTINA: Tucumán Province, W Embalse El Cadillal (26.6133°S, 65.2251°W), 685 m a.s.l.



Priscula piapoco Huber, 2000. IMG_2266 La Carbonera
VENEZUELA: Mérida: forest near La Carbonera (8.6276°N, 71.3688°W), 2380 m a.s.l.



Priscula salmeronica González-Sponga, 1996. IMG_3509 El Limón
VENEZUELA: Vargas: El Limón, 'site 1' (10.4788°N, 67.3010°W), 600 m a.s.l.



Priscula salmeronica González-Sponga, 1996. IMG_7565 Maracay-Puerto Colombia
VENEZUELA: Aragua: between Maracay and Puerto Colombia (10.4304°N, 67.5998°W), 380 m a.s.l.



Priscula sp.n. Tri18-11. IMG_7776 Cerro Aripo
TRINIDAD AND TOBAGO: Trinidad, Cerro Aripo (10.709°N, 61.235°W – 10.715°N, 61.236°W), 560-630
m a.s.l.



Priscula sp.n. Tri18-11. IMG_7791 Cerro Aripo
TRINIDAD AND TOBAGO: Trinidad, Cerro Aripo (10.709°N, 61.235°W – 10.715°N, 61.236°W), 560-630 m a.s.l.



Priscula ulai González-Sponga, 1996. IMG_7386 El Valle
VENEZUELA: Mérida: El Valle, cloud forest along river (8.703°N, 71.077°W), 2650 m a.s.l.



Priscula ulai González-Sponga, 1996. IMG_7424 El Valle
VENEZUELA: Mérida: El Valle, cloud forest along river (8.703°N, 71.077°W), 2650 m a.s.l.



Priscula venezuelana (Simon, 1893). IMG_3413 Henri Pittier La Cumbre
VENEZUELA: Aragua: Henri Pittier National Park, forest near La Cumbre (10.3575°N, 67.5771°W), 1450 m a.s.l.



Priscula venezuelana (Simon, 1893). IMG_5981 El Limon
 VENEZUELA: Vargas: El Limón, above road Colonia Tovar-Puerto Cruz (10.4566°N, 67.2548°W), 1535 m a.s.l.

***Psilochorus* Simon, 1893**



Psilochorus bromelicolus Huber, 2019. DSCF0232 Serra Bonita
 BRAZIL: BA: Reserva Particular do Patrimônio Nacional Serra Bonita (15°23.3'-23.4'S, 39°33.7'-34.0'W), ~750-850 m a.s.l.



Psilochorus conjunctus Gertsch & Davis, 1942 (?). IMG_0568 3km NE El Tanque
MEXICO: Durango, ~3 km NE El Tanque (24.9289°N, 103.7574°W), 1610 m a.s.l.



Psilochorus durangoanus Gertsch & Davis, 1937 (?). IMG_0521 W Durango
MEXICO: Durango, W Durango (23.9890°N, 104.7662°W), 2070 m a.s.l.



Psilochorus fishi Gertsch, 1971. IMG_1507 Xoxafi
MEXICO: Hidalgo, ~16 km NW Actopan, Grutas de Xoxafi (20.3883°N, 99.0275°W), 2000 m a.s.l.



Psilochorus imitatus Gertsch & Mulaik, 1940. IMG_9905 near Golden
USA: Colorado: Lookout Mountain near Golden, 'site 2' (39.731°N, 105.243°W, 2220 m a.s.l.



Psilochorus imitatus Gertsch & Mulaik, 1940. IMG_9908 near Golden
USA: Colorado: Lookout Mountain near Golden, 'site 2' (39.731°N, 105.243°W, 2220 m a.s.l.)



Psilochorus sp.n. Mex1. IMG_9706 2km N Mezcala
MEXICO: Guerrero, ~2 km N Mezcala (17.9514°N, 99.5882°W), 530 m a.s.l.)



Psilochorus sp.n. Mex12. IMG_9833 Cueva de Barrego
MEXICO: Guerrero, ~15 km W Chilpancingo, Cueva de Barrego (17.5560°N, 99.6542°W), 1990 m a.s.l.



Psilochorus sp.n. Mex14. IMG_9856 2km N Mazatlán
MEXICO: Guerrero, ~2 km N Mazatlán (17.4567°N, 99.4740°W), 1300 m a.s.l.



Psilochorus sp.n. Mex14. IMG_9857 2km N Mazatlán
MEXICO: Guerrero, ~2 km N Mazatlán (17.4567°N, 99.4740°W), 1300 m a.s.l.



Psilochorus sp.n. Mex23. IMG_9976 5km S Papanoa
MEXICO: Guerrero, ~5 km S Papanoa (17.2711°N, 101.0328°W), 75 m a.s.l.



Psilochorus sp.n. Mex152. IMG_1616 Xoxafi

MEXICO: *Hidalgo*, ~16 km NW Actopan, outside of Grutas de Xoxafi (20.3881°N, 99.0293°W), 1990 m a.s.l.



Psilochorus sp.n. Mex152. IMG_1625 Xoxafi

MEXICO: *Hidalgo*, ~16 km NW Actopan, outside of Grutas de Xoxafi (20.3881°N, 99.0293°W), 1990 m a.s.l.



Psilochorus sp.n. Mex154. IMG_1642 6km S Tehuacan
MEXICO: *Puebla*, ~6 km S Tehuacan (18.4011°N, 97.3860°W), 1540 m a.s.l.



Psilochorus sp.n. Mex154. IMG_1754 N Calapa bridge
MEXICO: *Puebla*, ~35 km SE Tehuacan, N of Calapa bridge (18.1652°N, 97.2605°W), 1020 m a.s.l.



Psilochorus sp.n. Mex172. IMG_1907 3km W Tehuantepec
MEXICO: Oaxaca, ~3 km W Tehuantepec (16.3196°N, 95.2818°W), 105 m a.s.l.



Psilochorus sp.n. Mex172. IMG_1955 17km NW Tehuantepec
MEXICO: Oaxaca, ~17 km NW Tehuantepec (16.3919°N, 95.3865°W), 165 m a.s.l.



Psilochorus murphyi Gertsch, 1973. IMG_1767 Cueva de Apoala
MEXICO: Oaxaca, Santiago Apoala, Cueva de Apoala (17.6447°N, 97.1445°W), 2000 m a.s.l.

***Saciperere* Huber & Carvalho, 2019**



Saciperere catuaba Huber & Carvalho, 2019. IMG_1065 Tapajos km 83
BRAZIL: Pará, Floresta Nacional de Tapajós, km 83 (3.049°S, 54.928°W), 95 m a.s.l.



Saciperere catuaba Huber & Carvalho, 2019. IMG_1258 Jamari
BRAZIL: Rondônia, Floresta Nacional de Jamari, 'sites 2 & 3' (9.22°S, 63.93°W - 9.26°S, 63.92°W), 110 m a.s.l.



Saciperere catuaba Huber & Carvalho, 2019. IMG_7564 Est Ecol Murici
BRAZIL: Alagoas, near Murici, Estação Ecológica de Murici (9°14.8'S, 35°50.3'W), 350-400 m a.s.l.



Saciperere catuaba Huber & Carvalho, 2019. IMG_8168 Pao Ferro
BRAZIL: Paraíba, Parque Estadual da Mata do Pau Ferro (6°57.9'S, 35°44.9'W), 600 m a.s.l.

***Savarna* Huber, 2005**



Savarna kaeo Huber, Petcharad & Bumrungsri, 2015. IMG_6992 Reclining Buddha Cave
THAILAND: Prachuap Khiri Khan: Reclining Buddha Cave (11°51.84'N, 99°49.40'E), 70 m a.s.l.



Savarna kaeo Huber, Petcharad & Bumrungsri, 2015. IMG_7005 Tham Sai
THAILAND: Prachuap Khiri Khan: Khao Sam Roi Yot N.P., Tham Sai (12°10.78'N, 100°00.44'E), 80 m a.s.l.



Savarna kraburiensis Wongprom & Wiwatwitaya, 2015. IMG_6962 Tham Phra Kayang
THAILAND: Ranong: Tham Phra Kayang (10°19.54'N, 98°45.88'E), 10-50 m a.s.l.



Savarna tessellata (Simon, 1901). IMG_6495 Wat Kuhapimuk
THAILAND: Yala: Wat Kuhapimuk, Tham Meud (6°31.7'N, 101°13.5'E), 40 m a.s.l.



Savarna thaleban Huber, 2005. IMG_6558 Thaleban
THAILAND: Satun: Thaleban N.P. (6°43.58'N, 100°09.74'E), forest and cave entrance, near ground among rocks, 100 m a.s.l.

***Smeringopina* Kraus, 1957**

Smeringopina africana (Thorell, 1899). cameroon0065 Kribi-Campo
CAMEROON: South Region: between Kribi and Campo, site 1 (2°42.2'N, 9°51.8'E), 10 m a.s.l.



Smeringopina ankasa Huber, 2013. DSCF1206-Kakum
GHANA: Central Region: Kakum National Park (5.3484°N, -1.3835°W), 160 m a.s.l.



Smeringopina ankasa Huber, 2013. DSCF1351-Ankasa
GHANA: Western Region: Ankasa National Park (5.2172°N, -2.6514°W), 180 m a.s.l.



Smeringopina attuleh Huber, 2013. cameroon0332 Attuleh
CAMEROON: Southwest Region: near Dschang, Attuleh, site 1 (5°27.7'N, 9°56.5'E), 1880 m a.s.l.



Smeringopina attuleh Huber, 2013. cameroon0369 Essotah
CAMEROON: Southwest Region: near Dschang, Essotah (5°25.5'N, 9°54.7'E), 1600 m a.s.l.



Smeringopina belinga Huber, 2013. DSCF0179 Belinga rocks
GABON: Ogooué-Ivindo: Monts de Belinga (0°58.7'N, 13°11.5'E), 860 m a.s.l.



Smeringopina bineti (Millot, 1941). DSCF0068 Koumbaya
GUINEA: Basse-Guinée: near Koumbaya (10°10.3'N, 12°53.3'W), forest, 220 m a.s.l.



Smeringopina bineti (Milot, 1941). DSCF0225 Dalaba
GUINEA: Moyenne-Guinée: Dalaba (10°40.7'N, 12°15.7'W), along brook in forest, 920 m a.s.l.



Smeringopina bineti (Milot, 1941). DSCF0745 SE Mamou
GUINEA: Moyenne-Guinée: SE Mamou (10°17.6'N, 11°56.5'W), forest along brook, 460 m a.s.l.



Smeringopina bomfobiri Huber, 2013. DSCF1122-Kakum
GHANA: Central Region: Kakum National Park (5.3484°N, -1.3835°W), 160 m a.s.l.



Smeringopina bomfobiri Huber, 2013. DSCF1467-Atewa
GHANA: Eastern Region: Atewa Hills, Atewa Atwirebu Reserve (6.2308°N, -0.5580°W), 740 m a.s.l.



Smeringopina essotah Huber, 2013. cameroon0357 Essotah
CAMEROON: Southwest Region: near Dschang, Essotah (5°25.5'N, 9°54.7'E), 1600 m a.s.l.



Smeringopina fang Huber, 2013. DSCF0268 Mayebout
GABON: Ogooué-Ivindo: Monts de Belinga, forest near Mayebout (1°06.7'N, 13°06.6'E), 500 m a.s.l.



Smeringopina fang Huber, 2013. DSCF0619 Chaillu 3

GABON: Ngounié: Massif du Chaillu, site 3, between Mimongo & Yéno (1°38.1'S, 11°32.6'E), 570-650 m a.s.l.



Smeringopina guineensis (Milot, 1941). DSCF0606 Dieke

GUINEA: Guinée Forestière: Forêt Clasée de Diéké (7°32.0'N, 8°49.9'W), 430 m a.s.l.



Smeringopina lekoni Huber, 2013. DSCF0411 Lekoni River
GABON: Haut Ogooué: forest at Lékon River (1°10.7'S, 13°32.3'E), 305 m a.s.l.



Smeringopina nyasoso Huber, 2013. cameroon0433 Nyasoso
CAMEROON: Southwest Region: Mt. Koupé above Nyasoso (4°49.6'N, 9°41.1'E), ~1600 m a.s.l.



Smeringopina ogooue Huber, 2013. DSCF0533 Pahon Pira grotte
GABON: Ogooué-Lolo: Grotte de Pahon Pira near Lastoursville (0°48.8'S, 12°45.1'E), 360 m a.s.l.



Smeringopina pulchra (Milot, 1941). DSCF1294-Kakum
GHANA: Central Region: Kakum National Park (5.3484°N, -1.3835°W), 160 m a.s.l.



Smeringopina tchimbele Huber, 2013. DSCF0053 Tchimbele-Kingue
GABON: Estuaire: Monts de Cristal, between Tchimbélé and Kingué (0°33.8'N, 10°18.8'E), 520 m a.s.l.

***Smeringopus* Simon, 1890**

Smeringopus bwindi Huber, 2012. DSCF0159 Bwindi
UGANDA: Kanungu District, Bwindi Impenetrable N.P., waterfall trail near Buhoma (0°59.8'-1°00.2'S,
29°36.9-37.2'E), ~1500-1600 m a.s.l.



Smeringopus chogoria Huber, 2012. DSCF0403 Chogoria
KENYA: Eastern Prov.: Mt. Kenya N.P., Chogoria Forest, site 1 (0°12.1'S, 37°29.4'E), 2460 m a.s.l.



Smeringopus chogoria Huber, 2012. DSCF0462 Mau Mau
KENYA: Central Prov.: Mt. Kenya, Mau Mau Cave (0°13.0'S, 37°08.2'E), 2230 m a.s.l.



Smeringopus chogoria Huber, 2012. DSCF0608 Elgon-Kitum
KENYA: Rift Valley: Mt. Elgon N.P., Kitum Cave (1°01.8'N, 34°45.4'E), 2410 m a.s.l.



Smeringopus cylindrogaster (Simon, 1907). cameroon0451 Loum
CAMEROON: Littoral Region: near Loum, forest with banana plants (4°43.6'N, 9°42.5'E), 400 m a.s.l.



Smeringopus cylindrogaster (Simon, 1907). DSCF0374 Ivindo NP
GABON: Ogooué-Ivindo: Ivindo N.P. near Simintang (0°32.2'N, 12°41.3'E), 545 m a.s.l.



Smeringopus cylindrogaster (Simon, 1907). DSCF0541 Nimba
GUINEA: Guinée Forestière: Mount Nimba ($\sim 7^{\circ}41.5'N$, $8^{\circ}24.5'W$), ~ 600 m a.s.l.



Smeringopus cylindrogaster (Simon, 1907). DSCF0635 Dieke
GUINEA: Guinée Forestière: Forêt Clasée de Diéké ($7^{\circ}32.0'N$, $8^{\circ}49.9'W$), 430 m a.s.l.



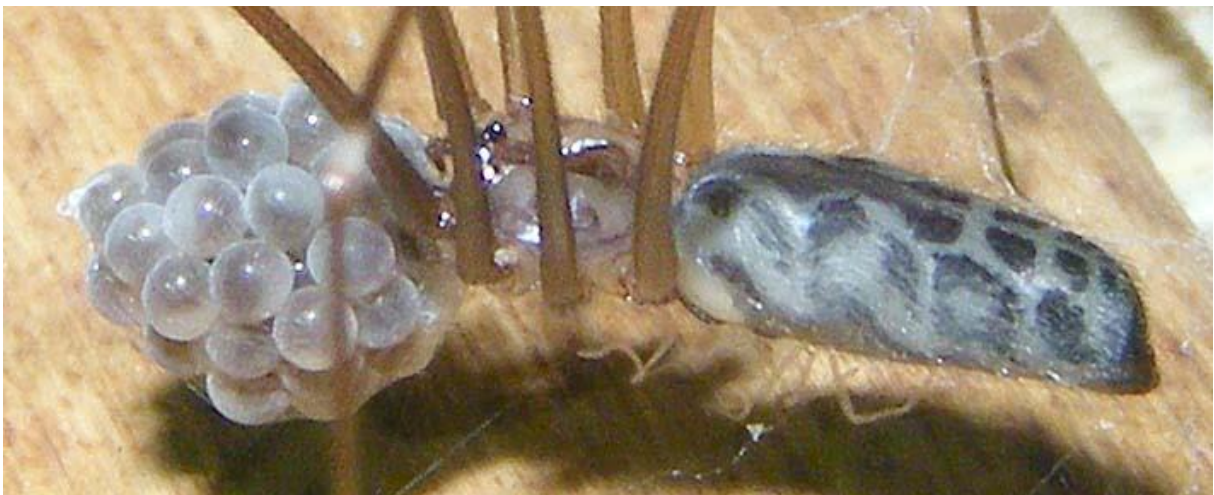
Smeringopus lesserti Kraus, 1957. DSCF0314 Mayebout
GABON: Ogooué-Ivindo: Monts de Belinga, Mayebout (1°06.9'N, 13°06.4'E), 500 m a.s.l., in building



Smeringopus lesserti Kraus, 1957. DSCF0319 Mayebout
GABON: Ogooué-Ivindo: Monts de Belinga, Mayebout (1°06.9'N, 13°06.4'E), 500 m a.s.l., in building



Smeringopus mpanga Huber, 2012. DSCF0470 Budongo
UGANDA: Masindi District, Budongo Forest Reserve (1°42.5-43.5'N, 31°31.6-32.7'E), ~1100 m a.s.l.



Smeringopus pallidus (Blackwall, 1858). DSCF0422 Bumaga
UGANDA: Bundibugyo District, Bumaga, in building (~0°49.3'N, 30°09.5'E), ~700 m a.s.l.



Smeringopus pallidus (Blackwall, 1858). IMG_1417 Sto Domingo
PHILIPPINES: Mindanao, Bukidnon Prov., Santo Domingo (7.782°N, 125.397°E), 560 m a.s.l.



Smeringopus peregrinus Strand, 1906. DSCF0309 Gonkonyi
KENYA: Eastern Prov.: Gonkonyi River, at slopes and in tunnel under road (1°56.8'S, 37°18.2'E), 1340 m a.s.l.

***Spermophora* Hentz, 1841**



Spermophora akwamu Huber & Kwapong, 2013. DSCF1315-Kakum
GHANA: Central Region: Kakum National Park (5.3484°N, -1.3835°W), 160 m a.s.l.



Spermophora awalai Huber, 2014. cameroon0271 Attuleh
CAMEROON: Southwest Region: near Dschang, Attuleh, site 1 (5°27.7'N, 9°56.5'E), 1880 m a.s.l.



Spermophora estebani Simon, 1892. IMG_2126 Mt Banahaw
PHILIPPINES: Luzon, Laguna Prov., Mt. Banahaw, forest with bamboo (14.113°N, 121.506°E), 550 m a.s.l.



Spermophora estebani Simon, 1892. IMG_2129 Mt Banahaw
PHILIPPINES: Luzon, Laguna Prov., Mt. Banahaw, forest with bamboo (14.113°N, 121.506°E), 550 m a.s.l.



Spermophora kirinyaga Huber & Warui, 2012. DSCF0433 Chogoria
KENYA: Eastern Prov.: Mt. Kenya N.P., Chogoria Forest, site 2 (0°14.2'S, 37°34.0'E), 1950 m a.s.l.



Spermophora maathaiae Huber & Warui, 2012. DSCF0379

KENYA: Eastern Prov.: Mt. Kenya N.P., Chogoria Forest, site 1 (0°12.1'S, 37°29.4'E), 2460 m a.s.l.



Spermophora sp.n. Mal2. IMG_4507 Cap Ternay

SEYCHELLES: Mahé: Port Glaud, near Cap Ternay (4.6452°S, 55.3883°E), 40 m a.s.l.



Spermophora sp.n. Mal2. IMG_5582 Dairy Farm
SINGAPORE: Dairy Farm Nature Park (1°21.6'N, 103°46.7'E), 50 m a.s.l.



Spermophora sp.n. Mal2. IMG_5583 Dairy Farm
SINGAPORE: Dairy Farm Nature Park (1°21.6'N, 103°46.7'E), 50 m a.s.l.



Spermophora mau Huber & Warui, 2012. DSCF0823 Mau Elburgon
KENYA: Rift Valley: Mau Escarpment near Elburgon (0°25.3'S, 35°47.3'E), 2930 m a.s.l.



Spermophora minotaura Berland, 1920. DSCF0587 Thompson
KENYA: Rift Valley: Thompson Falls near Nyahururu, (0°02.7'N, 36°22.1'E), 2350 m a.s.l.



Spermophora sp.n. Phi109. IMG_1661 CEDAR

PHILIPPINES: Mindanao, Bukidnon Prov., CEDAR (Center for Ecological Development and Recreation) (8.251°N, 125.034°E), 760 m a.s.l.



Spermophora senoculata (Dugès, 1836). IMG_0327 between Kalkan and Kaş

TURKEY: Antalya Prov., Kaş District, dry riverbed between Kalkan and Kaş (36.212°N, 29.513°E, 40 m a.s.l.)



Spermophora senoculata (Dugès, 1836). IMG_8606 Milonas Fall
GREECE: Crete: Milonas Waterfall (35°02.1'N, 25°50.7'E). 180 m a.s.l.



Spermophora senoculata (Dugès, 1836). IMG_8685 Presos
GREECE: Crete: Praisos (35°07.4'N, 26°05.4'E). 320 m a.s.l.

***Stenosfemuraia* González-Sponga, 1998**



Stenosfemuraia exigua Huber, 2020. IMG_6043 El Limon
VENEZUELA: Vargas: Hacienda Limon, above road Colonia Tovar-Puerto Cruz (10.4566°N,
67.2548°W), 1535 m a.s.l.



Stenosfemuraia pilosa (González-Sponga, 2005). IMG_5911 Colonia Tovar
VENEZUELA: Vargas: Colonia Tovar, forest above town (10.4144°N, 67.3005°W), 2140 m a.s.l.

***Stygopholcus* Kratochvil, 1932**



Stygopholcus sp. IMG_2566_Studenacka_pecina

MONTENEGRO: Nikšić Municipality: near Nikšić, Studenačka pecina (Studenačka cave) (42.7680°N, 18.9312°E), ~640 m a.s.l.

***Systemita* Simon, 1893**



Systemita prasina Simon, 1893. IMG_5795 El Avila

VENEZUELA: Capital: Parque Nacional El Avila, between Sabas Nieves and La Silla (10.5288°N, 66.8546°W), 1850 m a.s.l.



Systemita prasina Simon, 1893. IMG_5933 Colonia Tovar
 VENEZUELA: Vargas: Colonia Tovar, forest above town (10.4144°N, 67.3005°W), 2140 m a.s.l.

***Teranga* Huber, 2018**



Teranga domingo (Huber, 2016). IMG_1222 Sto Domingo
 PHILIPPINES: Mindanao, Bukidnon Prov., Santo Domingo (7.782°N, 125.397°E), 560 m a.s.l.



Teranga domingo (Huber, 2016). IMG_1352 Sto Domingo
PHILIPPINES: Mindanao, Bukidnon Prov., Santo Domingo (7.782°N, 125.397°E), 560 m a.s.l.



Teranga kerinci (Huber, 2011). IMG_9039 Barisan
INDONESIA: Sumatra, Lampung, Bukit Barisan (5.528°S, 104.424°E), 550-600 m a.s.l.



Teranga kerinci (Huber, 2011). IMG_9041 Barisan
INDONESIA: Sumatra, Lampung, Bukit Barisan (5.528°S, 104.424°E), 550-600 m a.s.l.



Teranga matutum (Huber, 2016). IMG_1510 Mt Matutum
PHILIPPINES: Mindanao, Mt. Matutum, Kawit Forest, 'site 1' (6.338°N, 125.104°E), 950 m a.s.l.

***Tissahamia* Huber, 2018**



Tissahamia bukittimah (Huber, 2016). IMG_5553 Dairy Farm
SINGAPORE: Dairy Farm Nature Park (1°21.6'N, 103°46.7'E), 50 m a.s.l.



Tissahamia bukittimah (Huber, 2016). IMG_5564 Dairy Farm
SINGAPORE: Dairy Farm Nature Park (1°21.6'N, 103°46.7'E), 50 m a.s.l.



Tissahamia ethagala (Huber, 2011). IMG_2484 Ethagala
SRI LANKA: North Western Prov.: Kurunegala, at base of Ethagala (Athugala) Mtn (7.490°N, 80.369°E), 170 m a.s.l.



Tissahamia ethagala (Huber, 2011). IMG_2539 Kandalama
SRI LANKA: Central Prov.: Kandalama Forest (7.859°N, 80.711°E), 220 m a.s.l.



Tissahamia karuna Huber, 2019. IMG_3076 Labugama
SRI LANKA: Western Prov.: Labugama Forest (6.846°N, 80.175°E), 150 m a.s.l.



Tissahamia kottawagamaensis (Yao & Li, 2016). IMG_2973 Viharekele
SRI LANKA: *Southern Prov.*: Viharekele Forest (6.099°N, 80.594°E), 120 m a.s.l.



Tissahamia ledang (Huber, 2011). IMG_5821 Gunung Ledang
MALAYSIA: *Johor*: Gunung Ledang, forest near Puteri Falls (2°21.2'-2°21.6'N, 102°37.8'-102°38.1'E), 100-300 m a.s.l.



Tissahamia maturata (Huber, 2011). IMG_2820 Hakgala
SRI LANKA: *Central Prov.*: Hakgala Forest (6.930°N, 80.814°E), 1790 m a.s.l.



Tissahamia phui (Huber, 2011). IMG_6413 Hala Bala
THAILAND: Narathiwat: Hala Bala Wildlife Sanctuary, 'site 3' (5°48.5'N, 101°49.4'E), 220 m a.s.l.



Tissahamia phui (Huber, 2011). IMG_6418 Hala Bala
THAILAND: Narathiwat: Hala Bala Wildlife Sanctuary, 'site 3' (5°48.5'N, 101°49.4'E), 220 m a.s.l.



Tissahamia uludong (Huber, 2016). IMG_5968 Ulu Dong
MALAYSIA: Pahang: Ulu Dong (3°56.5'N, 102°01.6'E), 190 m a.s.l.

Tolteca Huber, 2000



Tolteca hesperia (Gertsch, 1982). IMG_0111 17km E Manzanillo
MEXICO: Colima, ~17 km E Manzanillo (19.0115°N, 104.1382°W), 35 m a.s.l.



Tolteca hesperia (Gertsch, 1982). IMG_0115 17km E Manzanillo
MEXICO: Colima, ~17 km E Manzanillo (19.0115°N, 104.1382°W), 35 m a.s.l.



Tolteca hesperia (Gertsch, 1982). IMG_0442 3km S Rosario
MEXICO: Sinaloa, ~3 km S Rosario (22.9584°N, 105.8490°W), 65 m a.s.l.



Tolteca hesperia (Gertsch, 1982). IMG_1864 N San Pedro Totolapa
MEXICO: Oaxaca, ~3 km N San Pedro Totolapa (16.6976°N, 96.3180°W), 1100 m a.s.l.



Tolteca hesperia (Gertsch, 1982). IMG_1935 17km NW Tehuantepec
MEXICO: Oaxaca, ~17 km NW Tehuantepec (16.3919°N, 95.3865°W), 165 m a.s.l.



Tolteca jalisco (Gertsch, 1982). IMG_0214 N La Quemada
MEXICO: Jalisco, N La Quemada, 'site 2' (21.1922°N, 104.0975°W), 630 m a.s.l.



Tolteca jalisco (Gertsch, 1982). IMG_0226 N La Quemada
MEXICO: Jalisco, N La Quemada, 'site 2' (21.1922°N, 104.0975°W), 630 m a.s.l.

***Tupigea* Huber, 2000**



Tupigea sp.n. Br14-19. IMG_4171 St Hilaire-L-NP-Mata-Atl
BRAZIL: Parana, Saint-Hilaire/Lange National Park, forest above Hotel Mata Atlântica (25.670°S, 48.600°W), ~200-300 m a.s.l.



Tupigea sp.n. Br14-47. IMG_4555 Serra Geral NP Churriado
BRAZIL: Santa Catarina, Serra Geral National Park, Churriado Canyon (29.137°S, 49.953°W to 29.130°S, 49.965°W), forest near river, 150-250 m a.s.l.



Tupigea sp.n. Br14-47. IMG_4578 Serra Geral NP Churriado
BRAZIL: Santa Catarina, Serra Geral National Park, Churriado Canyon (29.137°S, 49.953°W to 29.130°S, 49.965°W), forest near river, 150-250 m a.s.l.



Tupigea sp.n. Br14-47. IMG_4598 Serra Geral 700 m
BRAZIL: Santa Catarina, Serra Geral National Park, forest along road at ~700 m a.s.l. (29.182°S, 50.008°W)



Tupigea sp.n. Br14-47. IMG_4684 Serra Geral 1000 m
BRAZIL: Santa Catarina, Serra Geral National Park, forest along road at ~1000 m a.s.l. (29.179°S, 50.024°W)



Tupigea sp.n. Br14-64. IMG_4726 Serra Geral S canyon
 BRAZIL: Santa Catarina, Aparados da Serra National Park, forest at southern margin of Itaimbezinho Canyon (29.161°S, 50.080°W), 940 m a.s.l.



Tupigea teresopolis Huber, 2000. IMG_5105 Penedo
 BRAZIL: Rio de Janeiro Prov., ~4 km NW Penedo (22°24,5'S, 44°33,0'-33,4'W), forest along river, 700-770 m a.s.l.

***Uthina* Simon, 1893**

Uthina huifengi Yao & Li, 2016. IMG_6605 nr Krabi
 THAILAND: *Krabi*: ~9 km N Krabi town, degraded forest between plantation and rocks (8°09.9'N, 98°51.7'E), 75 m a.s.l.



Uthina huifengi Yao & Li, 2016. IMG_6765 Tham Hong
 THAILAND: *Nakhon Si Thammarat*: Khao Nan N.P., Tham Hong (8°44.0'N, 98°38.1'E), 120 m a.s.l.



Uthina hylobatea Huber, Caspar & Eberle, 2019. IMG_9654 Tambligan
 INDONESIA: Bali, Lake Tambligan, forest along SE side of lake (8.265°S, 115.098°E), ~1420 m a.s.l.



Uthina khaosokensis Yao et al. 2014. IMG_6821 Khao Sok
THAILAND: Surat Thani: Khao Sok N.P., Tham Panthurat (8°54.03'N, 98°31.49'E), 80 m a.s.l.



Uthina khaosokensis Yao et al. 2014. IMG_6853 Khao Sok
THAILAND: Surat Thani: Khao Sok N.P., Tham Panthurat (8°54.03'N, 98°31.49'E), 80 m a.s.l.



Uthina luzonica Simon, 1893. DSCF1953 Lienhuachih
TAIWAN: Nantou: Lienhuachih (23.918°N, 120.884°E), 700 m a.s.l.



Uthina luzonica Simon, 1893. IMG_1649 San Jose
PHILIPPINES: Mindanao, Bukidnon Prov., Barangay San Jose, doline near Kabyaw Cave (7.703°N, 125.038°E), 220 m a.s.l.



Uthina luzonica Simon, 1893. IMG_6181 Gunung Jerai
MALAYSIA: Kedah: Gunung Jerai, forest near Sri Perigi Waterfall (5°48.5'N, 100°24.5'E), 30 m a.s.l.

***Wanniyala* Huber & Benjamin, 2005**

Wanniyala agrabopath Huber & Benjamin, 2005. IMG_2844 Hakgala
SRI LANKA: Central Prov.: Hakgala Forest (6.930°N, 80.814°E), 1790 m a.s.l.



Wanniyala labugama Huber, 2019. IMG_3109 Labugama
SRI LANKA: Western Prov.: Labugama Forest (6.846°N, 80.175°E), 150 m a.s.l.



Wanniyala mudita Huber, 2019. IMG_2439 Kandy
SRI LANKA: *Central Prov.*: Kandy, Dunumadallawa Forest (7.282°N, 80.643°E), 600-680 m a.s.l.



Wanniyala mudita Huber, 2019. IMG_2477 Kandy
SRI LANKA: *Central Prov.*: Kandy, Dunumadallawa Forest (7.282°N, 80.643°E), 600-680 m a.s.l.



Wanniyala orientalis Huber, 2019. IMG_2608 Minneriya
SRI LANKA: North Central Prov.: Minneriya Forest (8.047°N, 80.832°E)



Wanniyala orientalis Huber, 2019. IMG_2622 Dimbulagala
SRI LANKA: North Central Prov.: Dimbulagala (7.860°N, 81.118°E), 140 m a.s.l.



Wanniyala orientalis Huber, 2019. IMG_2687 Inginiyagala
SRI LANKA: Uva Prov.: Inginiyagala (7.225°N, 81.535°E), 110 m a.s.l.



Wanniyala mudita Huber, 2019. IMG_2758 Okkampitiya
SRI LANKA: Uva Prov.: near Okkampitiya (6.728°N, 81.336°E), 190 m a.s.l.



Wanniyala ohiya Huber, 2019. IMG_2875 Ohiya
SRI LANKA: Uva Prov.: near Ohiya (6.807°N, 80.848°E), 2000 m a.s.l.



Wanniyala upekkha Huber, 2019. IMG_2789 Ella
SRI LANKA: Uva Prov.: outside of cave near Ella (6.863°N, 81.050°E), 1030 m a.s.l.



Waniyala upekkha Huber, 2019. IMG_2913 Dematagala
SRI LANKA: Sabaragamuwa Prov.: above Dematagala (6.451°N, 80.751°E), 160 m a.s.l.