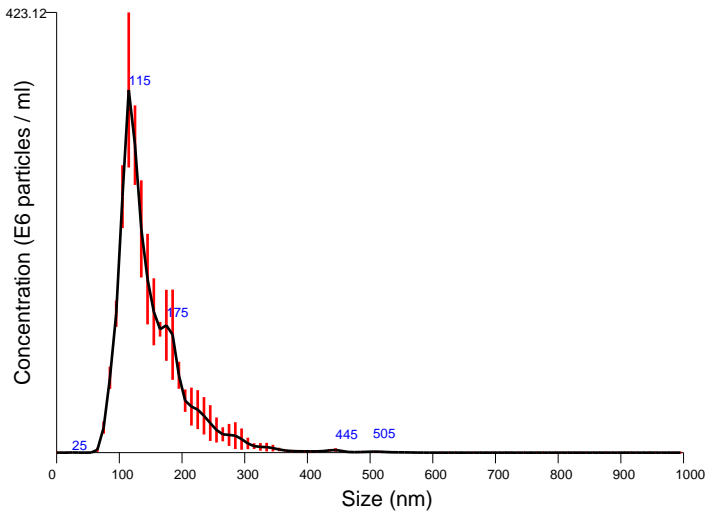


FTLA Size / Concentration graph for Experiment:  
(null) 2019-08-29 15-13-56



Averaged FTLA Size / Concentration  
Red error bars indicate +/- 1 standard error of the mean

<div>Included Files</div> <div>(null) 2019-08-29 15-14-38 (null) 2019-08-29 15-15-16 (null) 2019-08-29 15-15-55</div> <div>Details</div> <div><div>NTA Version:NTA 3.0 0060</div><div>Script Used:Priscila MV modified.txt</div><div>Time Captured:15:13:56 29/08/2019</div><div>Operator:euphemia</div><div>Pre-treatment:</div><div>Sample Name:BT474 msEV 10kG spin (1)</div><div>Diluent:PBS</div><div>Remarks:SG 1 CL 10 SG1 DT6 1:100 dilution</div></div> <div>Capture Settings</div> <div><div>Camera Type:SCMOS</div><div>Camera Level:10</div><div>Slider Shutter:600</div><div>Slider Gain:250</div><div>FPS:25.0</div><div>Number of Frames:749</div><div>Temperature:25.0 °C</div><div>Viscosity:(Water) 0.887 - 0.888 cP</div><div>Dilution factor:Dilution not recorded</div><div>Syringe Pump Speed:50</div></div> <div>Analysis Settings</div> <div><div>Detect Threshold:6</div><div>Blur Size:Auto</div><div>Max Jump Distance:Auto: 13.7 - 14.1 pix</div></div>	<div>Results</div> <div><div>Stats: Merged Data</div><div><div>Mean:145.5 nm</div><div>Mode:116.6 nm</div><div>SD:56.8 nm</div><div>D10:90.3 nm</div><div>D50:123.8 nm</div><div>D90:211.3 nm</div></div><div>Stats: Mean +/- Standard Error</div><div><div>Mean:145.5 +/- 2.3 nm</div><div>Mode:118.4 +/- 4.0 nm</div><div>SD:56.6 +/- 2.7 nm</div><div>D10:89.8 +/- 1.3 nm</div><div>D50:123.9 +/- 3.5 nm</div><div>D90:206.5 +/- 9.8 nm</div></div><div>Concentration:<div>2.41e+009 +/- 2.60e+007 particles/ml</div><div>122.3 +/- 1.3 particles/frame</div><div>128.2 +/- 1.8 centres/frame</div></div></div>
---	--