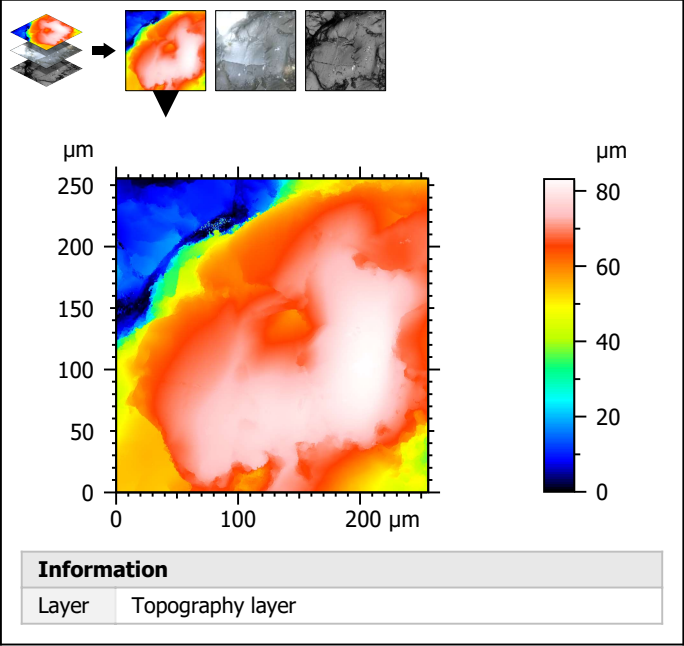


Extract 50x50 μm sub-surfaces from a surface acquired with the Olympus LEXT 4000 with 50x/0.95 objective at 1x zoom



| Identity card | | | |
|---------------|--|--------|--|
| Name: | VSH4-5-Point3-50-1x | | |
| File path: | D:\Data\Anto\ALL DAT...\VSH4-5-Point3-50-1x.lext | | |
| Axis: | X | | |
| Length: | 256 | μm | |
| Size: | 1024 | points | |
| Spacing: | 250 | nm | |
| Axis: | Y | | |
| Length: | 256 | μm | |
| Size: | 1024 | points | |
| Spacing: | 250 | nm | |
| Axis: | Z | | |
| Length: | 83.2 | μm | |
| Size: | 62882 | digits | |
| Spacing: | 1.32 | nm | |
| NMP ratio: | 0.00 % (0 Pts) | | |

