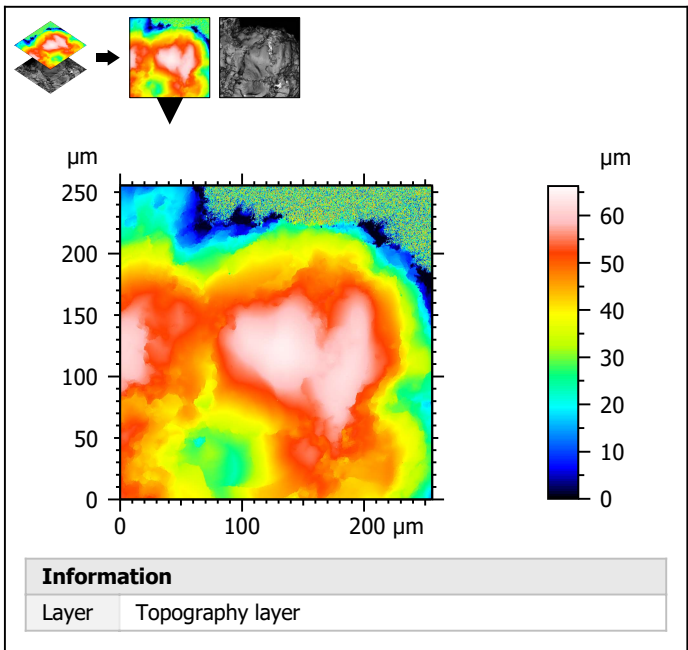


Extract 50x50  $\mu\text{m}$  sub-surfaces from a surface acquired with the Olympus LEXT 4000 with 50x/0.95 objective at 1x zoom



| Identity card |   |        |  |
|---------------|---|--------|--|
| Name:         | VSH4-1-Point2-50-1x                             |        |  |
| File path:    | D:\Data\Anto\ALL DAT...\VSH4-1-Point2-50-1x.lex |        |  |
| Axis:         | X   |        |  |
| Length:       | 256   | μm     |  |
| Size:         | 1024  | points |  |
| Spacing:      | 250   | nm     |  |
| Axis:         | Y   |        |  |
| Length:       | 256   | μm     |  |
| Size:         | 1024  | points |  |
| Spacing:      | 250   | nm     |  |
| Axis:         | Z   |        |  |
| Length:       | 66.3  | μm     |  |
| Size:         | 62394   | digits |  |
| Spacing:      | 1.06  | nm     |  |
| NMP ratio:    | 0.00 % (0 Pts)                                  |        |  |

