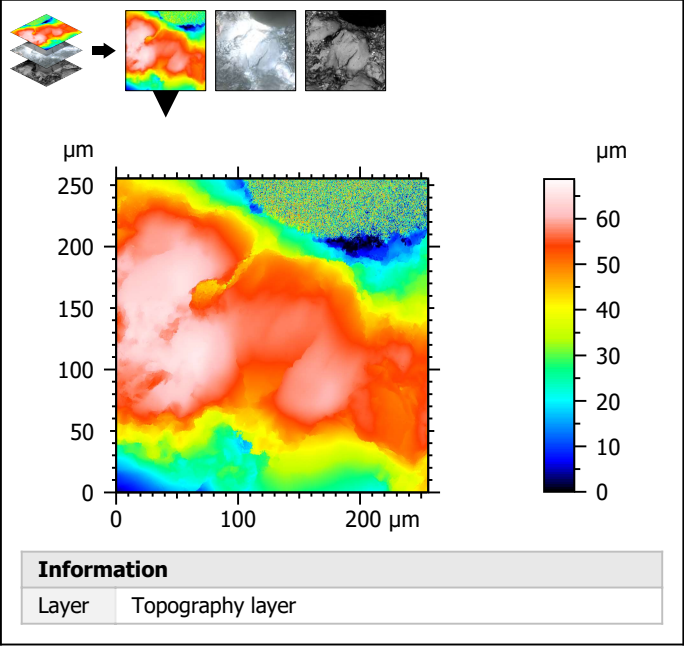


Extract 50x50 μm sub-surfaces from a surface acquired with the Olympus LEXT 4000 with 50x/0.95 objective at 1x zoom



Identity card			
Name:	VSH4-1-Point1a-50-1x		
File path:	D:\Data\Anto\ALL DAT...\VSH4-1-Point1a-50-1x.lex		
Axis:	X		
Length:	256	μm	
Size:	1024	points	
Spacing:	250	nm	
Axis:	Y		
Length:	256	μm	
Size:	1024	points	
Spacing:	250	nm	
Axis:	Z		
Length:	68.7	μm	
Size:	62544	digits	
Spacing:	1.10	nm	
NMP ratio:	0.00 % (0 Pts)		

