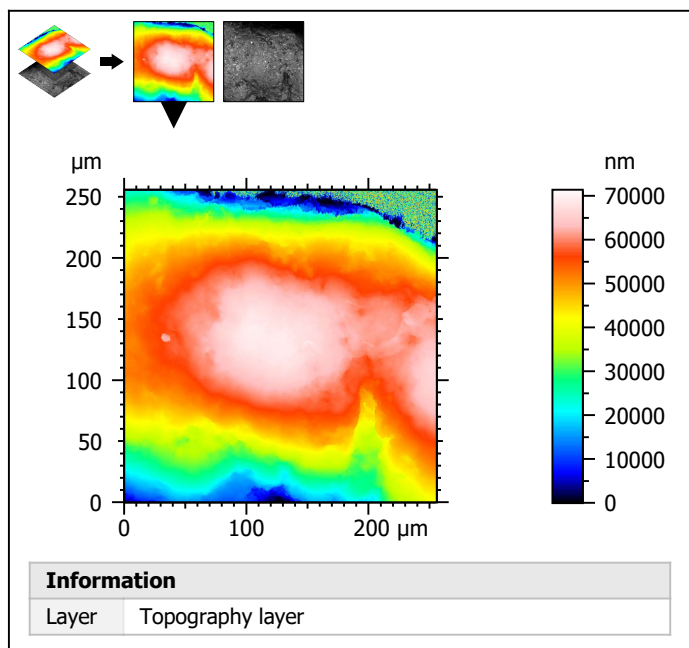


Extract 50x50 μm sub-surfaces from a surface acquired with the Olympus LEXT 4000 with 50x/0.95 objective at 1x zoom



Identity card			
Name:	A35-6-Point2-50x-1x		
File path:	D:\Data\Anto\ALL DATA...\A35-6-Point2-50x-1x.lex		
Axis:	X		
Length:	256	µm	
Size:	1024	points	
Spacing:	0.250	µm	
Axis:	Y		
Length:	256	µm	
Size:	1024	points	
Spacing:	0.250	µm	
Axis:	Z		
Length:	71449	nm	
Size:	62453	digits	
Spacing:	1.14	nm	
NMP ratio:	0.00 % (0 Pts)		

