

WTC: Praeludium I BWV 846

J. S. Bach

Piano

Measures 1-3 of the Praeludium I BWV 846. The right hand features a continuous eighth-note pattern in C major, while the left hand plays a simple harmonic accompaniment of quarter notes.

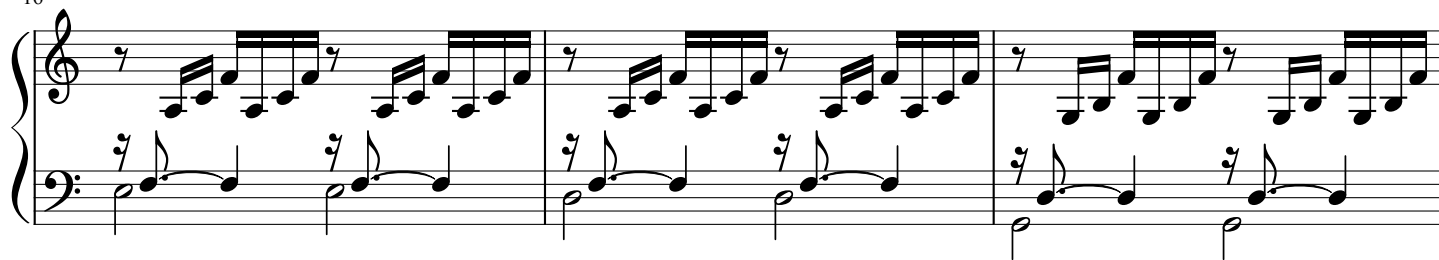
Measures 4-6 of the Praeludium I BWV 846. The right hand continues the eighth-note pattern, with a key signature change to C# major in measure 6. The left hand accompaniment remains consistent.

Measures 7-9 of the Praeludium I BWV 846. The right hand continues the eighth-note pattern in C# major. The left hand accompaniment remains consistent.

Measures 10-12 of the Praeludium I BWV 846. The right hand continues the eighth-note pattern, with a key signature change to C major in measure 12. The left hand accompaniment remains consistent.

Measures 13-15 of the Praeludium I BWV 846. The right hand continues the eighth-note pattern in C major. The left hand accompaniment remains consistent.

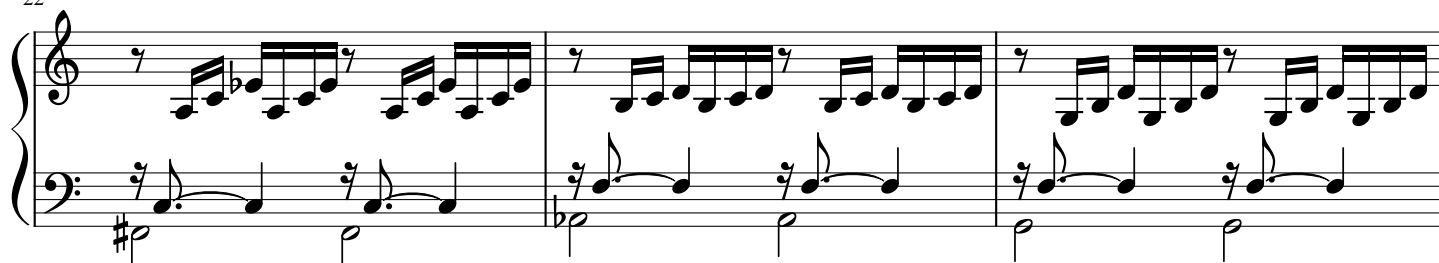
16



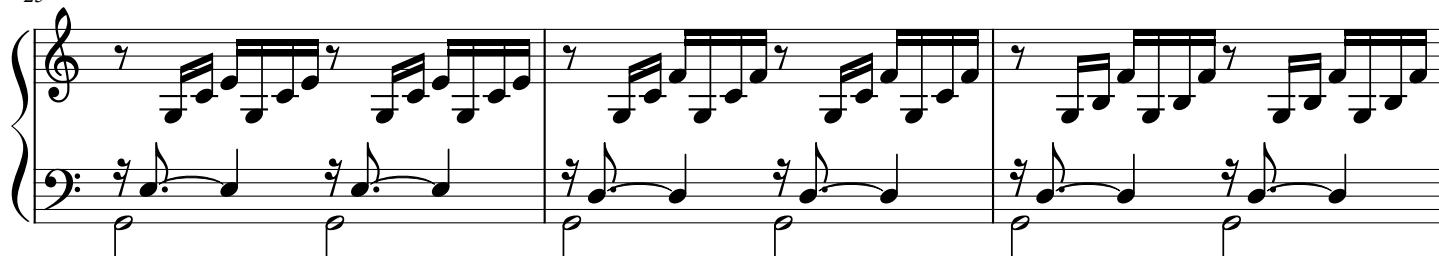
19



22



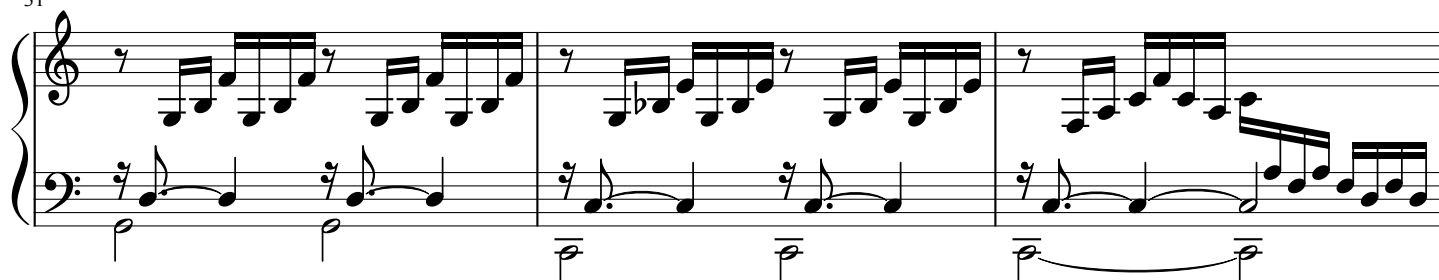
25



28



31



34

