



Manifest Data Lab

Republic of Learning
Imagining Climate
Futures
24th January 2020



This emblem began with a twisted abstract shape representing thoughts about climate change. Then an eye and question marks were added, watching, thinking and looking. Hands meeting together or separate and a heart, putting our hearts in to it, to do things with love and togetherness. Finally the world as global community rather than isolated.

Republic of Learning 4: Imagining Climate Futures	
Facilitators	Erin Dickson, Rachel Jacobs & Giles Lane
Participants	Aideen, Alice, Dorothy, Farhana, Mike, Noa & Steffi
Theme	The news is full of the fires in Australia and floods in Indonesia. How can we close the distance between our situation here in London, Kings Cross and Somers Town, and theirs? How can we share creatively explore and share ideas about how to respond to climate impacts? This workshop used felt to imagine ways to help each other respond to climate impacts on our homes, places and communities as we experience climate change in different ways around the world.
Questions	What stories do we tell, emotions do we feel, roles we take on and myths we believe when we think about the future and climate change?

This emblem began with a big red square to mean danger, and a fire. The loose ends represent feelings of being unsettled, fearful. An ear was added to represent listening to indigenous and traditional knowledge. People were added who were linked together and mushrooms and mycellium were added to the green background, the things that connect us together, that we don't see, that are all around us. Finally a sign was added that could be removed with a Cautionary tale' written on it, suggesting danger but where action is still possible.

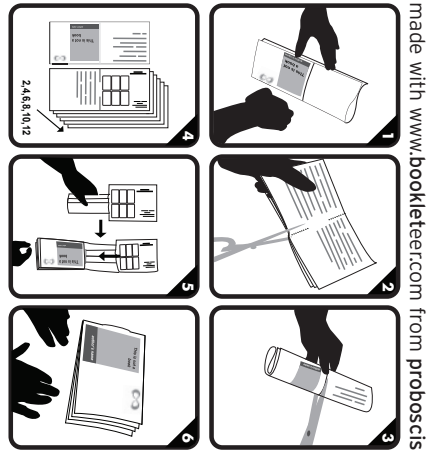
Manifest Data Lab

Republic of Learning 4 Documentation

Rachel Jacobs & Giles Lane
2020-02-12 & CC BY-NC-SA
Published by Proboscis
www.manifest-data.org



https://bkttr.it/37KMM



Activity: Making a climate change emblem together

Make a circular symbol/emblem using felt, glue, needles and thread, cardboard, paper and bits of wood.

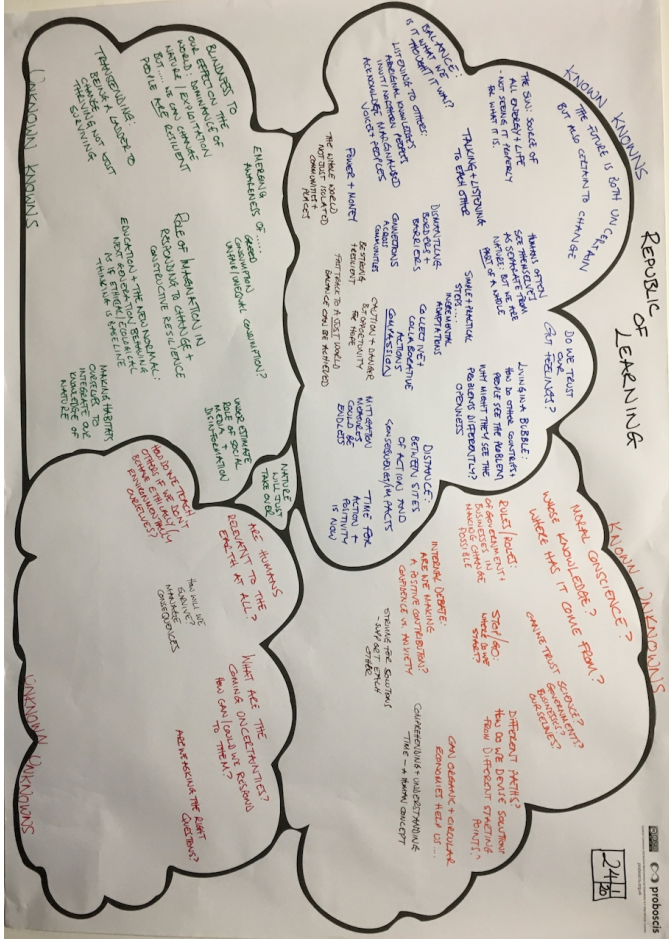
1. **Understanding** - Start by making an image that shows what climate change means to you in your home/life/work. It can be abstract - about feelings and emotions or literal - for example habits, places, people, nature, things climate change bring to mind.
2. **Not understanding** - Take the symbol made by the person on your left (and pass yours to your right) and add something to their symbol that represents a question or confusion you have about climate change.
3. **Actions** - Again take the symbol on your left and add a representation of something you think we can do to limit climate change (mitigation) or a way we can adapt to climate change (or both)
4. **Impacts and Roles** - Again take the symbol on your left and add something to show what roles communities, places, institutions or non-humans can take do the actions suggested by this new symbol
5. **Myths and Hopes** - It is then passed on again, on the next symbol add which of the climate myths you would suggest fits or responds to the narrative of this new symbol

What story and tools are represented in the symbol you started with?

Lamenting Eden a return to a pure, wild nature that humans have destroyed	Bringing on the Apocalypse The end of the world	Constructing Babel We can build a new world, a utopia and solve everything with technology	Celebrating Jubilee We can create a just, moral world if we do the right thing
Traditionalist The future should be as the past, not sure about modern world but not wanting things to change	Survivor Reacting to what life throws at you and hope the future is somehow easier, things will get better and you will somehow survive	Winner Life is a game to win, live for the moment and love the modern world and technology, optimistic the future is full of progress and things getting better	Striver There are many problems that you want to fix, seeking a spiritual, ethical and moral dimension to life. You strive for the future to be better than now



This emblem began with scales, showing imbalance, then people talking, as circular symbols with hats on and speech bubbles. A habitat was added representing how much humans get from wild spaces and nature, with threatened birds and sustainable eco-systems. The apple that Eve ate was added, representing nature, celebrating a just world based on knowledge. Finally all the non-natural symbols were removed and each element was sewed on, representing a way that balance can be achieved.





This emblem is based on the great wave by Hokusai, began with the sun rays, designed in such a way that if you turn the circle of felt around it turned into an ocean. Also representing a balance/imbalance, a reverse image. Added to this was a ladder representing transcendence and moving beyond what we think we know, intertwined and aspirational hopes and fears. Added was money as the power we have. Finally a clock was added to represent deep time and the timescales of climate change.



This emblem started with a hot overloaded brain. Added to this was a wall, then people climbing a wall, representing borders and exclusion, dismantling the wall and two women together. Added were arrows facing forward, representing no time, simplicity, forward thinking. Added to this was a tag with the words 'be strong'.



This emblem began with the sun, representing both the drought in Scotland last year and our need of the sun. Added to this was birds, representing happiness as important to celebrate (along with the sunshine) in response to fear. An ear and a heart were added, representing listening and compassion, with the forest entrapped in a broken cage. Our roles and responsibilities were signified by the symbols of social media crossed out, and a pathway back to the sun. Hope.

This emblem began with a house with some water and planted trees, with a green roof. The house is flooded, solar panels and insulation were then added. Dollars were thrown at the house to help to change our lifestyles, money and support. Once the resources were added a bridge and a ladder were also added . On the back a summary of the emblem was written 'striving for solutions'.





This emblem began with an abstract symbol representing emotions, jagged edges, representing fear and something inarticulate, a crack, growth, life. In response was a question – do we become activists or focus on being creative, making emblems like these? Next a book was added, education for young children, the future people who will be in positions of power.



This emblem began with the sun and then a fierce broken up Earth, reflecting how much we consume. Added to this was a tower block symbolising where we to build and live next, and plans to move whole cities to new places. Finally, hands were added which represent being open and taking care of things.