



Data Management Plan – Why write one and how to do it?

Seminar organized by:

Stockholm University Library

Research Support Office

January 28, 2020, 09:00 – 12:00

Program

9:00 – 9:15 Welcome and introduction – *Anders Moberg*¹

- 9:15-10:15

Funding agency requirements on Data Management Plans

Riksbankens Jubileumsfond – *Eva Stensköld*

Vetenskapsrådet – *Sanja Halling*

- 10:15-10:30 **Coffee**

- 10:30-12:00 **Data Management Plans in context and practice**

Open Data Pilot – ERC/Horizon 2020 – *Mikko Roos*²⁾

Data Management – Good research practice – *Sara Belfrage*²⁾

How to write a Data Management plan – *Joakim Philipson*³⁾

Archiving research data – *Margareta Ödmark*³⁾

Data Management services and support – *RDM team*³⁾

1) *Department of Physical Geography* 2) *Research Support Office* 3) *Research Data Management Team*

What is a Data Management Plan?

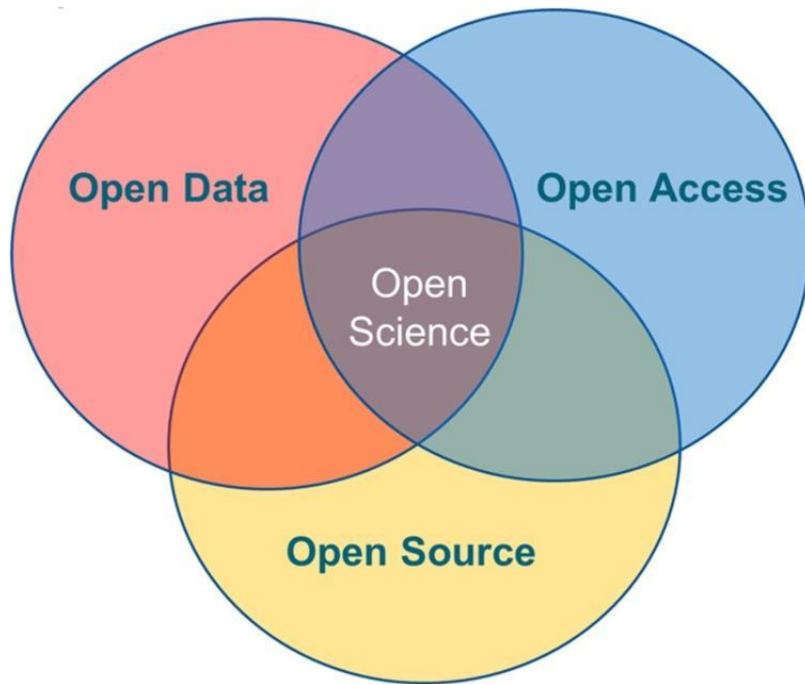
A data management plan (DMP) contains information concerning how research materials are collected, organized, saved, made accessible and preserved during the entire research process and following the completion of a project.



Why should you write one?

1. To help your future colleagues and other interested persons to find, access and understand how to use your research data.
2. Because it has been decided that you have to!

On the path to a new paradigm...



- **Open science** is the movement to make scientific research and its dissemination accessible to all levels of an inquiring society, amateur or professional.
- In 2016, Sweden and the EU member states adopted the EU Council's conclusions on the **transition towards an open science system**.

On the path to a new paradigm...

- **Member States should set and implement clear policies** for the management of **research data** resulting from publicly funded research, including **open access**.
- **data management planning** becomes a standard scientific practice early in the research process,
- **research data** that results from publicly funded research becomes and stays **findable, accessible, interoperable and re-usable ('FAIR principles')** within a secure and trusted environment, through **digital infrastructures**.



<https://ec.europa.eu/research/openscience>



Requirements from funders

- “By 2019, all who receive grants from us must have a data management plan”

Vetenskapsrådet

- “RJ har ... beslutat att begära in en DHP för projekt som söker inom stödformen Infrastruktur för forskning under år 2020”

Riksbankens Jubileumsfond

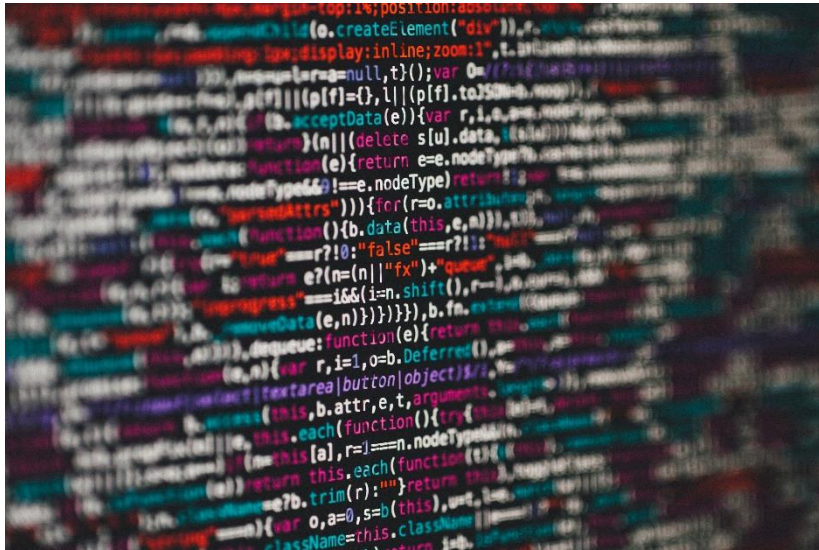


Photo by Markus Spiske on Unsplash

- **What is your data about?**
- **Will future scientists find and understand your data?**



Photo by Pablo Sánchez on Unsplash



Photo by Ryoji Iwata on Unsplash

A scientist



- Pehr Wilhelm Wargentin (1717–1783)
- Astronomer
- Secretary of the Royal Swedish Academy of Sciences
- Initiated “Tabellverket”, now known as Statistics Sweden

His office



The original document is available at the Centre for History of Science. Image from Instagram.
Photo courtesy of J. Häggblom.

- Old astronomical observatory in Stockholm
- Daily weather observations 1754 – 1783
- Argued for using standardized observation routines

some of **His** data

Januari månad. *inläst. Hög. i Hockst. år 1756.*

dag.	förr middaga.	Bar.	Th.	Wind.	efr. middagarna	Bar.	Th.	Wind.
✓ 1.	klart.	25,15	— 8	NW, 1.	klart hela natten. en skens maffa skö örning vid Nere konstenta. knägel 5 gr. hög	---	— 9	0
2	klart. Stark rimfrost.	25,32	— 9	NW, 2.	Klart öfver midnatt. utan st. sk.	---	— 9	0
3	mulet eller rattare, dimbogl.	25,38	— 10	L.	Flock dimba.	25,40	— 7	0
4	mulet, blåste foga	---	— 7	NW	Klart till natten. utan st. sk.	---	— 8	---
5	gläsa midn.	25,27	— 9	NW, 2.	mulet. Grogade snöga.	25,26	— 5	NO. 1½
6	helt mulet. har ei mycket frögnat.	25,40	— 2	OSO. 1	Snögar till Smatt. är en an åtför	---	— 1	SO. 1
7	mulet. litet regnblandad. Snö	25,20	+ 4	SO, 2	mulet. fullt to.	---	+ 1½	SO. 1
8	Liknar sig at bli klart.	25,12	+ 1	S. 1	mulet. slaskigt igen	---	+ 2	S.
9	mulet och regnar. Skof. tals.	25,30	+ 2	S. 2½	naßfar i et duggande till midn. stafeligt regn och storm in på natten.	---	+ 3	S. 3½
10	Har öfvermod. Khet klart, men ei frusit.	25,19	+ 3	SW. 3	äfven klart, men mulnade in på natten.	---	— 1	W. 2
11	har stor regnat hela natten. med snöbland.	25,05	+ 2	SW. 1	mulet, men har ei regnat.	25,26	+ 1	NW. 2½
12	har mycket regnat i natt, är an mulet.	25,16	+ 5	WSW. 1	mulet. blöfregolunda klart till natten.	25,08	+ 4	WSW. 3.
13	i dagningen var klart. Sedan mulnade.	25,10	+ 1	W. 3	mulet hela eftermiddagen och natten.	---	— 1	W. 1.
14	Öfver neder en myckenhet vät snö.	24,70	— 0	NW. 3	mulet men snögade ei mer	24,70	— 1	W. 1
15	helt klart, lunt, men mulnade flax.	24,69	— 0	W. 1	mulet. godt åtför på landet.	24,78	— 5	W. 1

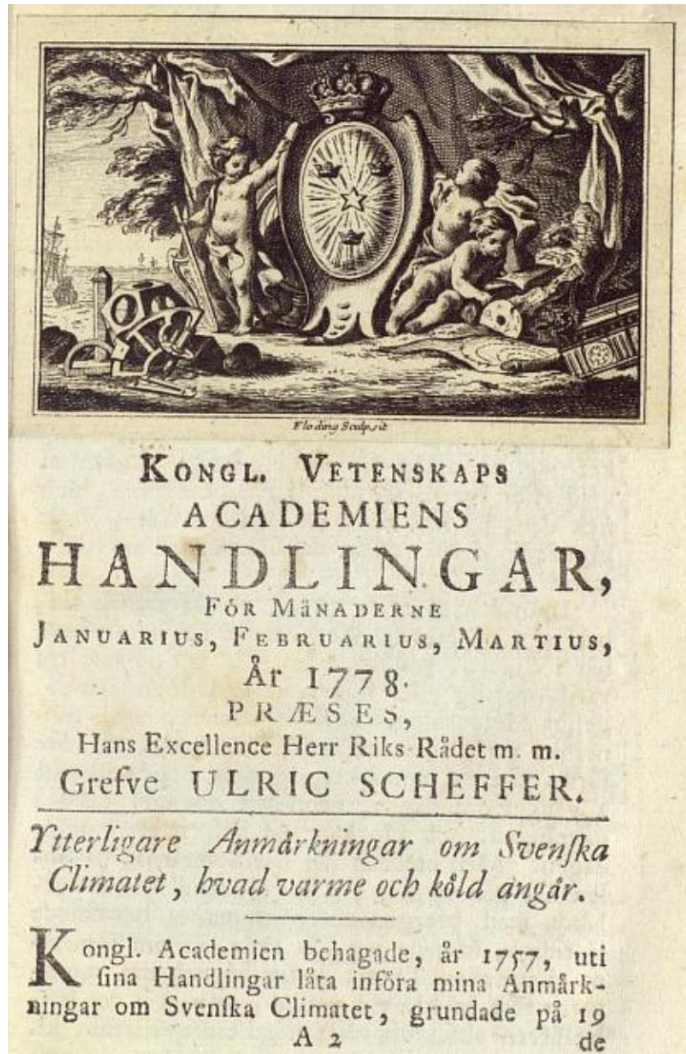
Wargentin's weather observation diary, January 1756.

Centrum för vetenskapshistoria, Manuskriptkatalogen, Meteorologiska Centralanstaltens arkiv,
Meteorologiska observationer från Stockholms observatorium.



Stockholms
universitet

His paper about those data



Front page of Wargentin's article in the transactions of the Royal Swedish Academy of Sciences, 1778, vol. 39, p. 3–19.
The original document is available at the Centre for History of Science.

Which is most important today?

Januari 1756. Meteor. aff. Stockholm år 1756.

dag	för middagen	tem	tem	tem	tem	tem	tem	tem	tem
1	klat.	25,11	-8	25,11	25,11	25,11	25,11	25,11	25,11
2	klat. stark vind.	25,32	-9	25,32	25,32	25,32	25,32	25,32	25,32
3	mulet till natt, snöböl.	25,30	-10	25,30	25,30	25,30	25,30	25,30	25,30
4	mulet, kalla föga	25,27	-9	25,27	25,27	25,27	25,27	25,27	25,27
5	klara m.	25,27	-9	25,27	25,27	25,27	25,27	25,27	25,27
6	klara mulet, till natten, snöböl.	25,27	-9	25,27	25,27	25,27	25,27	25,27	25,27
7	mulet, till natten, snöböl.	25,27	-9	25,27	25,27	25,27	25,27	25,27	25,27
8	klara m.	25,27	-9	25,27	25,27	25,27	25,27	25,27	25,27
9	mulet, till natten, snöböl.	25,27	-9	25,27	25,27	25,27	25,27	25,27	25,27
10	klara m.	25,27	-9	25,27	25,27	25,27	25,27	25,27	25,27
11	klara m.	25,27	-9	25,27	25,27	25,27	25,27	25,27	25,27
12	klara m.	25,27	-9	25,27	25,27	25,27	25,27	25,27	25,27
13	klara m.	25,27	-9	25,27	25,27	25,27	25,27	25,27	25,27
14	klara m.	25,27	-9	25,27	25,27	25,27	25,27	25,27	25,27
15	klara m.	25,27	-9	25,27	25,27	25,27	25,27	25,27	25,27
16	klara m.	25,27	-9	25,27	25,27	25,27	25,27	25,27	25,27
17	klara m.	25,27	-9	25,27	25,27	25,27	25,27	25,27	25,27
18	klara m.	25,27	-9	25,27	25,27	25,27	25,27	25,27	25,27
19	klara m.	25,27	-9	25,27	25,27	25,27	25,27	25,27	25,27
20	klara m.	25,27	-9	25,27	25,27	25,27	25,27	25,27	25,27
21	klara m.	25,27	-9	25,27	25,27	25,27	25,27	25,27	25,27
22	klara m.	25,27	-9	25,27	25,27	25,27	25,27	25,27	25,27
23	klara m.	25,27	-9	25,27	25,27	25,27	25,27	25,27	25,27
24	klara m.	25,27	-9	25,27	25,27	25,27	25,27	25,27	25,27
25	klara m.	25,27	-9	25,27	25,27	25,27	25,27	25,27	25,27
26	klara m.	25,27	-9	25,27	25,27	25,27	25,27	25,27	25,27
27	klara m.	25,27	-9	25,27	25,27	25,27	25,27	25,27	25,27
28	klara m.	25,27	-9	25,27	25,27	25,27	25,27	25,27	25,27
29	klara m.	25,27	-9	25,27	25,27	25,27	25,27	25,27	25,27
30	klara m.	25,27	-9	25,27	25,27	25,27	25,27	25,27	25,27

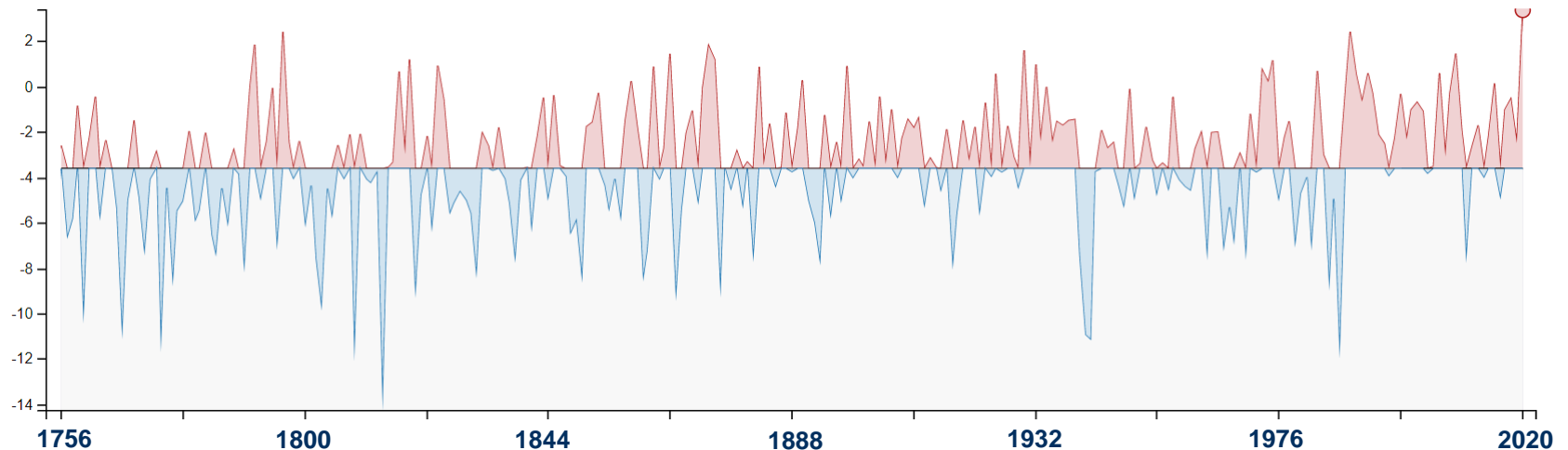
Kongl. Vetenskaps ACADEMIENS HANDLINGAR, FÖR MÅNADERNE JANUARIUS, FEBRUARIUS, MARTIUS, År 1778. PRÆSES, Hans Excellence Herr Riks Rådet m. m. Grefve ULRIC SCHEFFER.

Ytterligare Anmärkningar om Svenska Climated, hvad varme och köld angår.

Kongl. Akademien behagade, år 1757, uti sina Handlingar låta införa mina Anmärkningar om Svenska Climated, grundade på 19 de

His data or his paper?

January mean temperature in Stockholm 1756–2020



- A Data Management Plan and good metadata would have helped scientists today to better understand Wargentin's and later observers' data.
- You can help future scientists to find, access and understand how to use your data!

Research data lifecycle



A data management plan helps to do better science – now and in the future

Swedish National Data Service



Find and order data

Data Management

Describe and deposit data

News & Events

SND – a national collaboration

Swedish National Data Service (SND) has a primary function to support the accessibility, preservation, and re-use of research data and related materials. Together with a network of more than 30 universities and public research institutes, we strive to create a national infrastructure for open access to research data.

<https://snd.gu.se/>

Program

9:00 – 9:15 Welcome and introduction – *Anders Moberg*¹

- 9:15-10:15

Funding agency requirements on Data Management Plans

Riksbankens Jubileumsfond – *Eva Stensköld*

Vetenskapsrådet – *Sanja Halling*

- 10:15-10:30 **Coffee**

- 10:30-12:00 **Data Management Plans in context and practice**

Open Data Pilot – ERC/Horizon 2020 – *Mikko Roos*²⁾

Data Management – Good research practice – *Sara Belfrage*²⁾

How to write a Data Management plan – *Joakim Philipson*³⁾

Archiving research data – *Margareta Ödmark*³⁾

Data Management services and support – *RDM team*³⁾

1) *Department of Physical Geography* 2) *Research Support Office* 3) *Research Data Management Team*