

# Data Stewardship at Delft University of Technology

Dr. Heather Andrews  
[H.E.AndrewsMancilla@tudelft.nl](mailto:H.E.AndrewsMancilla@tudelft.nl)  
Data Steward  
Faculty of Aerospace Engineering



Dr. Yan Wang  
[Y.Wang-16@tudelft.nl](mailto:Y.Wang-16@tudelft.nl)  
Data Steward  
Faculty of Architecture and the Built Environment



The Data Stewardship project at Delft University of Technology (TU Delft) is a novel approach to create mature working practices and policies for research data management (RDM) across the campus. The key aspect of this approach is that solutions are discipline-specific, having Data Stewards embedded at each one of the faculties.

*Data Stewards assist researchers in terms of RDM*

*Data Stewards keep RDM alive!*

In 2017 the first Data Stewards were appointed at three faculties of the TU Delft. At the beginning of 2018, Data Stewards were appointed at the remaining five faculties.

## Who are we?

Data Stewards are RDM experts, who work as the first point of contact for RDM questions within the respective faculties.

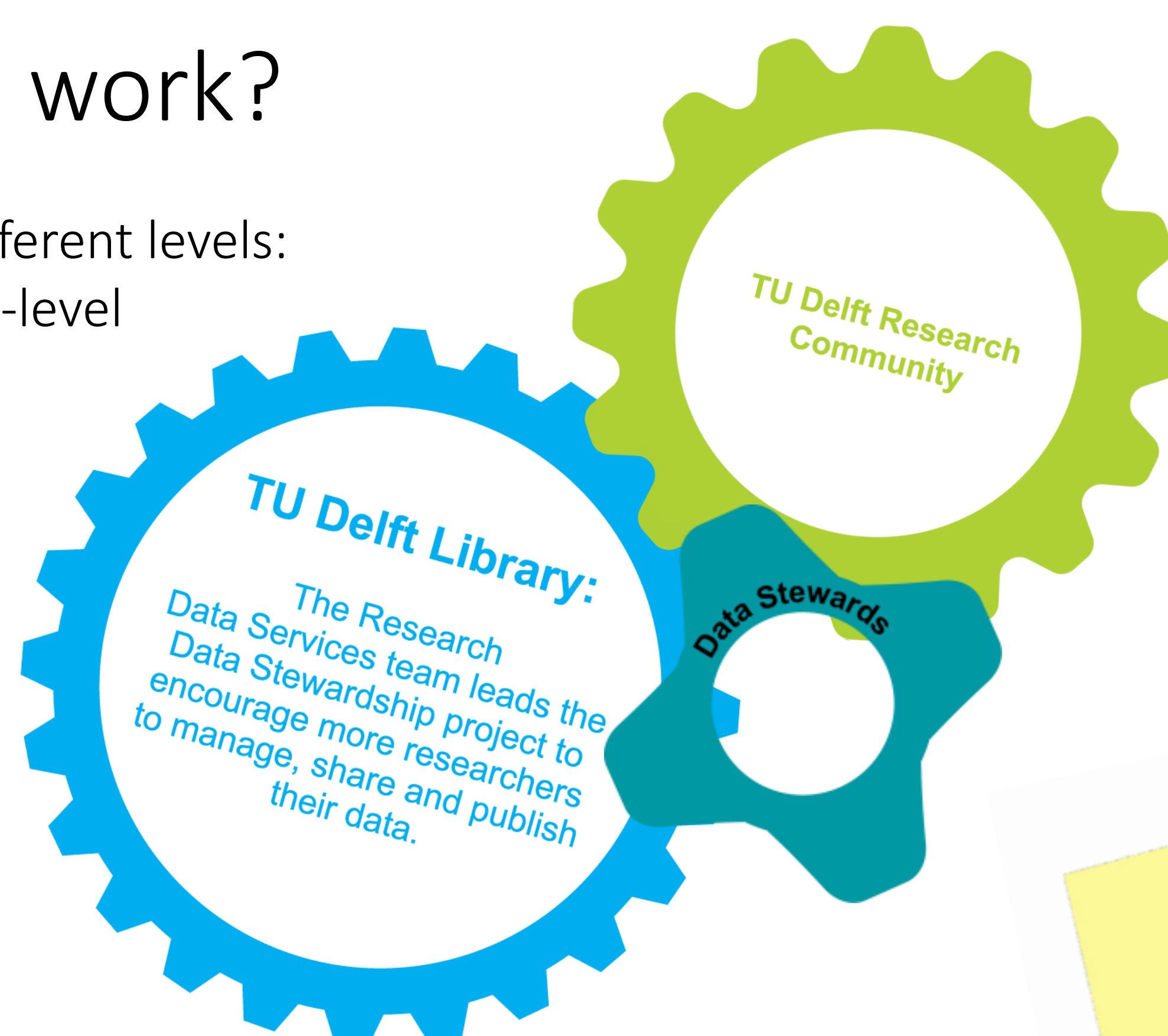
All Data Stewards have experience in research, and have a background similar to the faculty's research topics.

## How do we work?

Data Stewards work at 2 different levels: University-level & Faculty-level

*All Data Stewards are coordinated by the Library*

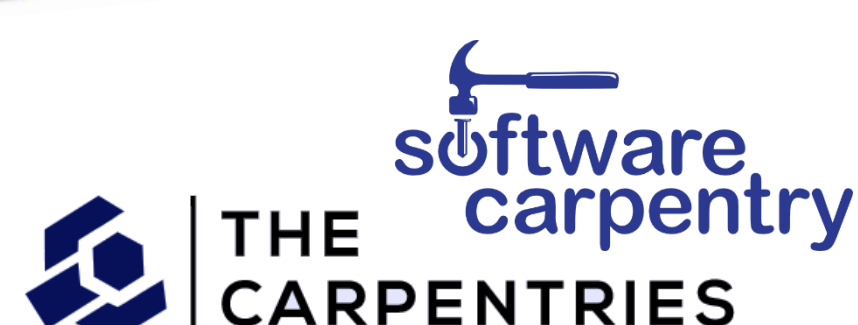
*At University level Data stewards work closely with Library Team*



## University Level

New RDM procedures (e.g., Working with personal data, Data Management Planning)

TU Delft RDM Policy Framework  
<https://zenodo.org/record/2573160#.XYCwtvkzZPY>



Run Software and Data Carpentries  
<https://software-carpentry.org/>

### RDM survey

First results of the survey run in 2017-2018 are published in Andrews et al. (2019) <http://doi.org/10.18352/lq.10287>  
Results of survey 2019 coming soon!

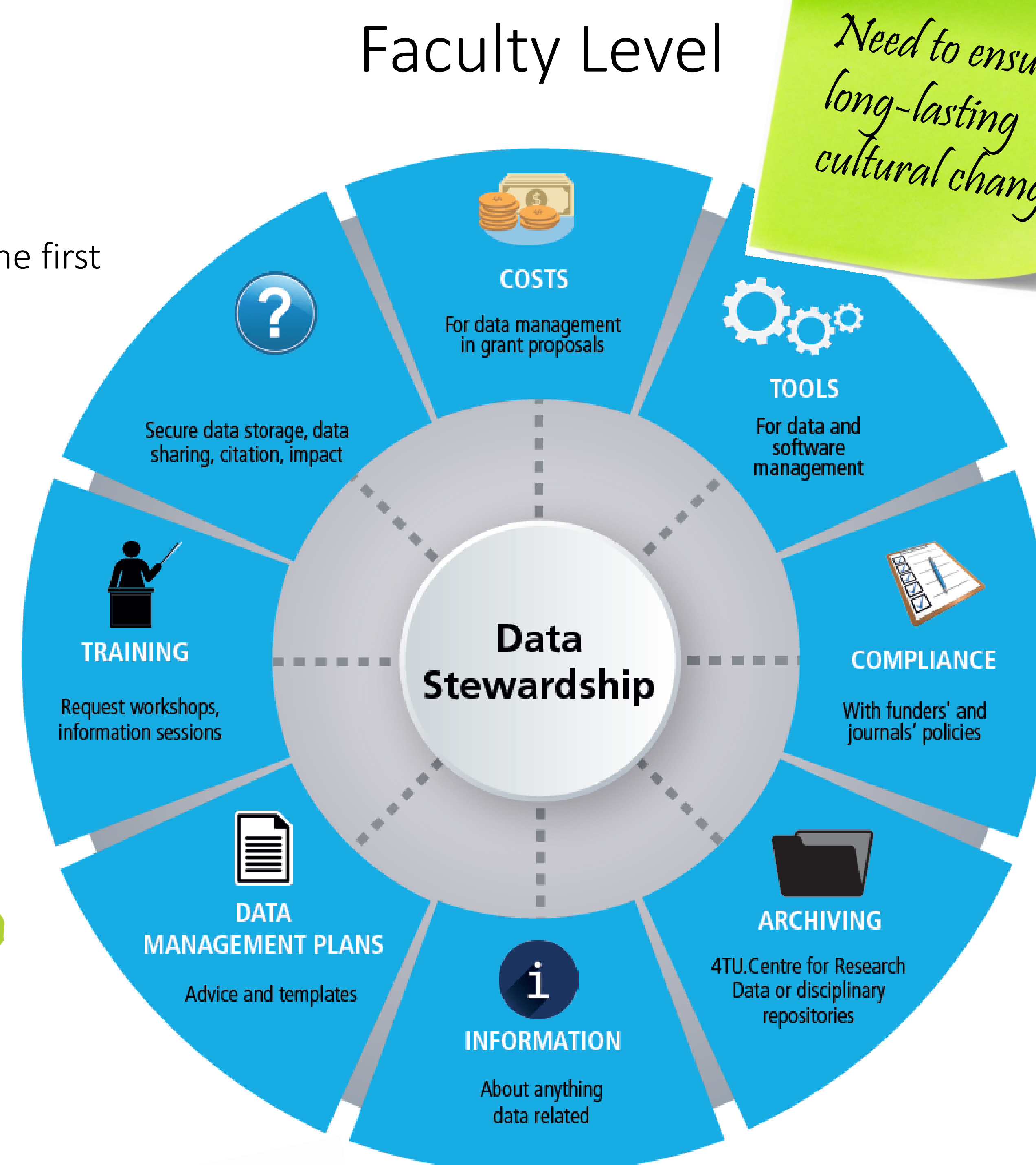
Coding Lunch & Data Crunch  
Walk-in coding and data sessions

Data Champions  
Community of researchers RDM aware!

## Why the need for Data Stewards?

In order to improve RDM practices, long-lasting cultural change must be ensured. Researchers need to see RDM as part of their research, and not as an administrative task. Thus, it is important researchers work closely with local RDM experts to adopt tailored disciplinary solutions, and embrace the cultural change.

*Need to ensure long-lasting cultural change*



*Mixed top-down and bottom-up approaches to spread awareness and information*

*Each faculty has its own culture*

*At faculty level Data stewards work closely to Legal and ICT services*



## Want to know more?

Read more about our activities at  
<https://openworking.wordpress.com/>

Interested in knowing more about Data Champions?



Want to get to know us?