

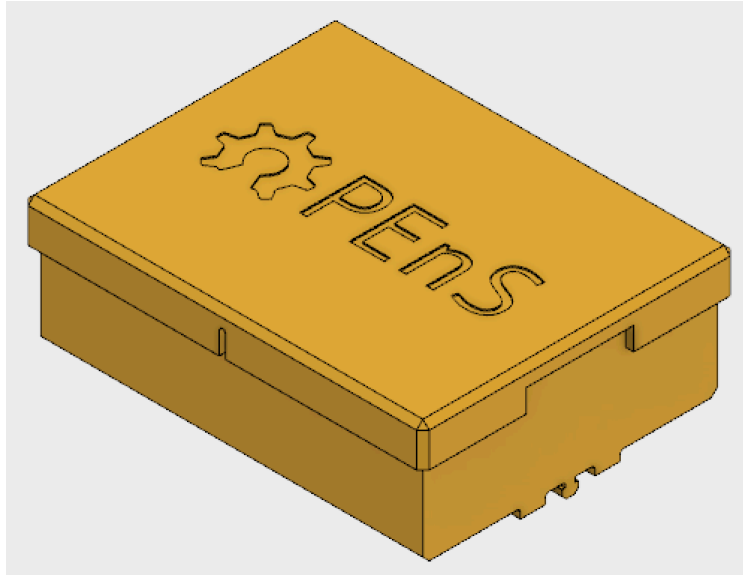
3D Printed Component Info Sheet – MCB Case 14

Part Name: MCB Case

Project: OPEnSampler

Current Version: 14

Date: November 14, 2017



Summary Description:

Houses the Main Control Board PCB and the Arduino Uno microcontroller. Slides into Misumi 15mm Aluminum Extrusion. Attaches to the top of the electronics “spine” in the center of the board. Includes openings for the USB cable connecting to the Arduino as well as on either side for ribbon cables, switch wires, and power wires.

Description and reason for most recent changes:

Added channels in the top cover to allow some flexing when removing and attaching it to the main body.

Comments:

This part has not been printed successfully. Due to excessive warping and difficulty attaching the lid, the design will need to be adjusted.

Related Parts:

Arduino Uno microcontroller

USB Type A to Type B

MCB PCB

Recommended Print Settings:

Printer: Fusion3 F400-S

Print Head, Extruder Type: 0.4mm E3D v6, Bowden

Slicer: Simplify3D

Layer Height:

Layer Width:

Speed:

Support Type:

Support Fill:

Fans: Low

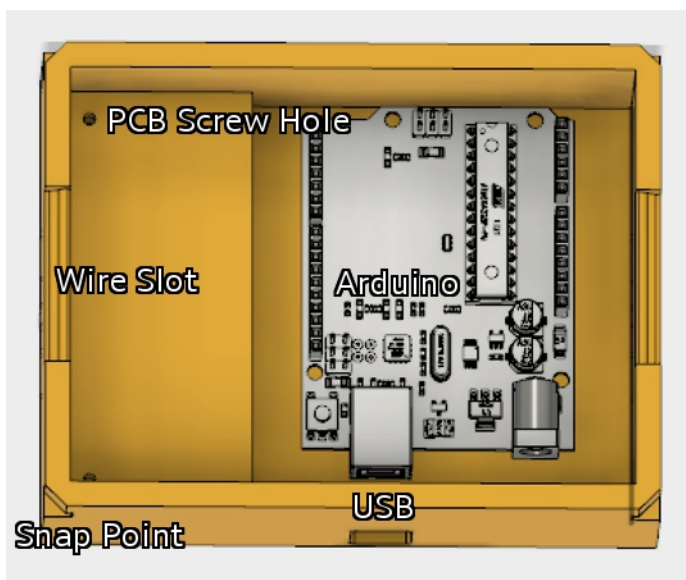
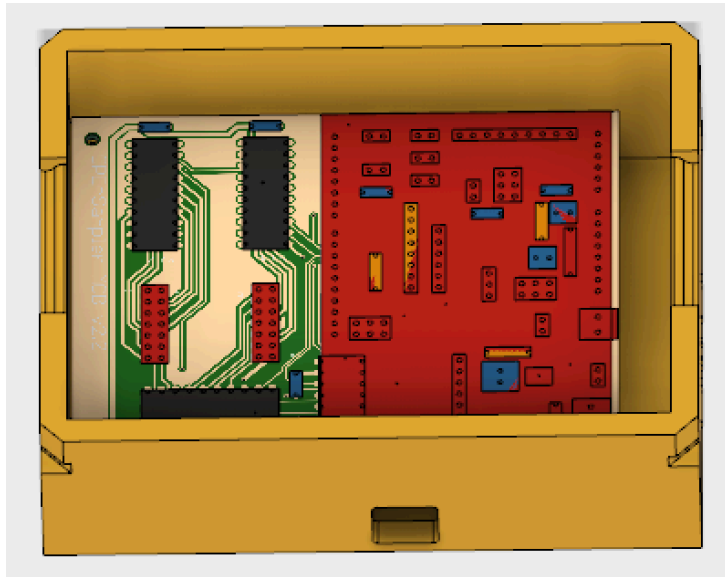
Top/Bottom Layers:

Comments: No recommended print settings this far.

Post Processing:

Recommended vapor-finish, but not required.

Pictures:



Version Changes:

14:

- Added channels in sides of top cover