

5 Adaptation of calibration method to Banja reservoir model

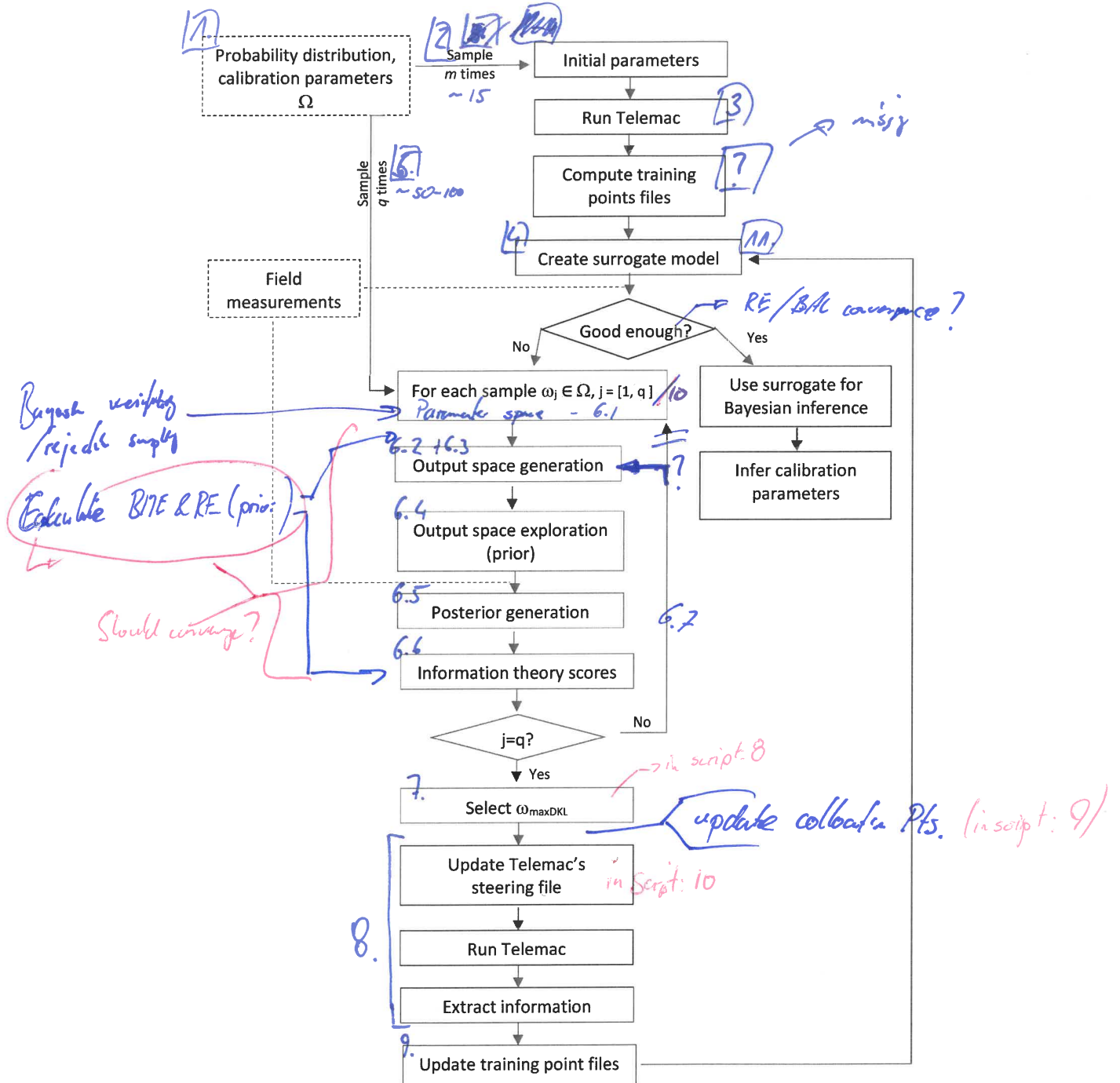


Figure 5.5: Flowchart of code logic used for surrogate update of morphodynamic model

where the surrogate error can be calculated by a leave-one-out cross-validation (LOO-CV). It should be noted that the LOO-CV procedure is computationally expensive, and therefore the value was not updated in every BAL iteration, but every 15 runs approximately.